



Issue Date: August 23, 2023

ATTN: Vendors

RE: Project Name: Ketchikan Bathroom Remodel
Project Number: 02B6522018
Project Location: Ketchikan, Alaska

Addendum # Five (5)

This addendum forms a part of the contract documents and modifies the original drawings and/or specifications for the subject work. In case of conflicts between this addendum and previously issued documents, this addendum shall take precedence.

The following additions are required:

1. The current closing date for bids for this project is August 28, 2023 at 1:00 PM. This date will be amended to Wednesday, September 6, 2023 at 1:00 PM.
2. A list of questions has been sent by prospective bidders and will be addressed in this addendum.
 - Please define the wall tile scope. **What areas get floor to ceiling tile, what areas get a wainscot and what areas get no tile? The shower areas will get wall to ceiling tile. The bathroom and sink areas as well as locker room areas will all be in sheetrock.**
 - Existing Ceilings are acoustical drop ceilings, should these be replaced with acoustical drop ceilings or hard lids? **These will be replaced with acoustical drop ceilings as they are now.**
 - Please provide a hazard material assessment for the work area. **An asbestos report is included with this addendum.**

This addendum is considered part of the Invitation to Bid (ITB) and is to be acknowledge on your bid proposal.

Please contact me if you have any questions.

Sincerely

Jay Friesen

Building Management Specialist

907-428-7198

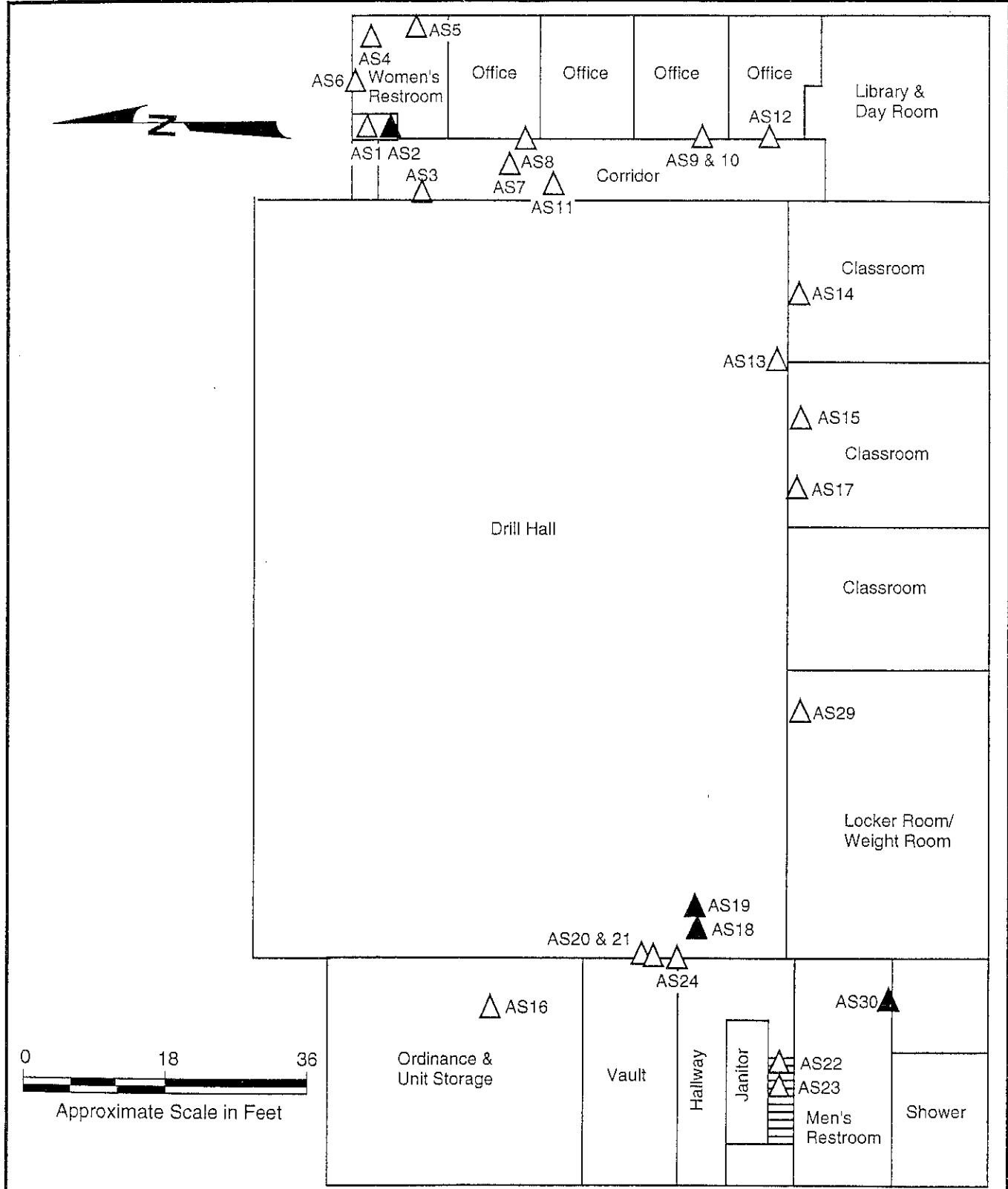
TABLE 1 - SAMPLE LOCATIONS AND DESCRIPTIONS

ASBESTOS SAMPLES

Sample Number	Date	Sample Location (See Figures 2, 3, and Table 2)	Sample Classification	Area s.f./l.f.
AS1	1/17/95	Asbestos Sample No. 1, Floor tile, Janitors closet	Brown, with brown and white streaks, 9" square tiles	30 s.f.
AS2	1/17/95	Asbestos Sample No. 2, Floor tile mastic, Janitors closet	Black mastic	30 s.f.
AS3	1/17/95	Asbestos Sample No. 3, Cove base mastic, Hallway	Tan, brittle mastic	NM
AS4	1/17/95	Asbestos Sample No. 4, Ceiling tiles, Women's bathroom	White with brown, 4' x 4' suspended tiles	150 s.f.
AS5	1/17/95	Asbestos Sample No. 5, Sheetrock, Interior walls, Women's bathroom	White gypsum with paper covering	NM
AS6	1/17/95	Asbestos Sample No. 6, Roofing Tar, Women's bathroom	Black, brittle roofing tar	NM
AS7	1/17/95	Asbestos Sample No. 7, Suspended ceiling tiles, Hallway	White and grey, 2' x 4' tiles with raised square pattern	6820 s.f.
AS8	1/17/95	Asbestos Sample No. 8, Paneling, lower 4' of Hallway and lower 8' of Drill Hall	White, brown paneling	3580 s.f.
AS9	1/17/95	Asbestos Sample No. 9, Leveling spackle beneath carpet, on top of floor tile	White spackle	NM
AS10	1/17/95	Asbestos Sample No. 10, Mastic between leveling spackle and floor tile	Tan mastic	NM
AS11	1/17/95	Asbestos Sample No. 11, Linoleum beneath brown carpet, Hallway	White linoleum with gray backing	240 s.f.
AS12	1/17/95	Asbestos Sample No. 12, Carpet mastic, Hallway	Tan sticky mastic between carpet and linoleum	240 s.f.
AS13	1/17/95	Asbestos Sample No. 13, Interior sheetrock wallboard, Drill Hall	White gypsum board	NM
AS14	1/17/95	Asbestos Sample No. 14, Roofing paper, top of wood ceiling, Classroom	Black Tar paper	13600 s.f.
AS15	1/17/95	Asbestos Sample No. 15, Linoleum beneath brown carpet, Classroom	White linoleum	740 s.f.
AS16	1/17/95	Asbestos Sample No. 16, Covebase mastic, Ordinance	Brown, brittle mastic	NM
AS17	1/17/95	Asbestos Sample No. 17, Blackboard mastic, Classroom	Brown, brittle mastic	150 s.f.
AS18	1/17/95	Asbestos Sample No. 18, Tar paper beneath cork subfloor in Drill Hall	Black tar paper between concrete slab and cork subfloor	8680 s.f.
AS19	1/17/95	Asbestos Sample No. 19, Tar paper beneath wood floor in Drill Hall	Black tar paper between wood floor and cork subfloor	8680 s.f.
AS20	1/17/95	Asbestos Sample No. 20, Sheetrock spackle, Interior walls, Drill Hall	White spackle	NM
AS21	1/17/95	Asbestos Sample No. 21, Sheetrock Tape, Interior walls, Drill Hall	White tape	NM
AS22	1/17/95	Asbestos Sample No. 22, Step tiles and kick plate, Stairway	Brown with white streaks	100 s.f.
AS23	1/17/95	Asbestos Sample No. 23, Mastic for Stairway tiles	Tan, hard brittle mastic	100 s.f.
AS24	1/17/95	Asbestos Sample No. 24, Paneling mastic, Drill Hall	Green/gray brittle mastic	2950 s.f.
AS25	1/17/95	Asbestos Sample No. 25, Flexible duct connectors, Boiler Room	White fabric duct connectors	3 units
AS26	1/17/95	Asbestos Sample No. 26, Pump and valve gaskets, Boiler Room	Green gaskets	4 units
AS27	1/17/95	Asbestos Sample No. 27, Pipe insulation, Storage room under stairs	White/tan fibrous material on elbows, exposed	10 fittings
AS28	1/17/95	Asbestos Sample No. 28, Gray board, covering decorative block, former kitchen	Gray and brown amosite board	400 s.f.
AS29	1/17/95	Asbestos Sample No. 29, Tar Paper roofing material, Roof	Black tar paper beneath rubber membrane build up roof	13600 s.f.
AS30	1/17/95	Asbestos Sample No. 30, Pipe insulation, elbows, shower room	White, hard material covered with hard white cloth	10 fittings
AS31	1/17/95	Asbestos Sample No. 31, Acoustical ceiling tiles, Rifle Range	White and brown 12" square tiles	880 s.f.
AS32	1/17/95	Asbestos Sample No. 32, Acoustical ceiling tile mastic, Rifle Range	Brown, brittle mastic	880 s.f.

Material identified as Asbestos Containing Material

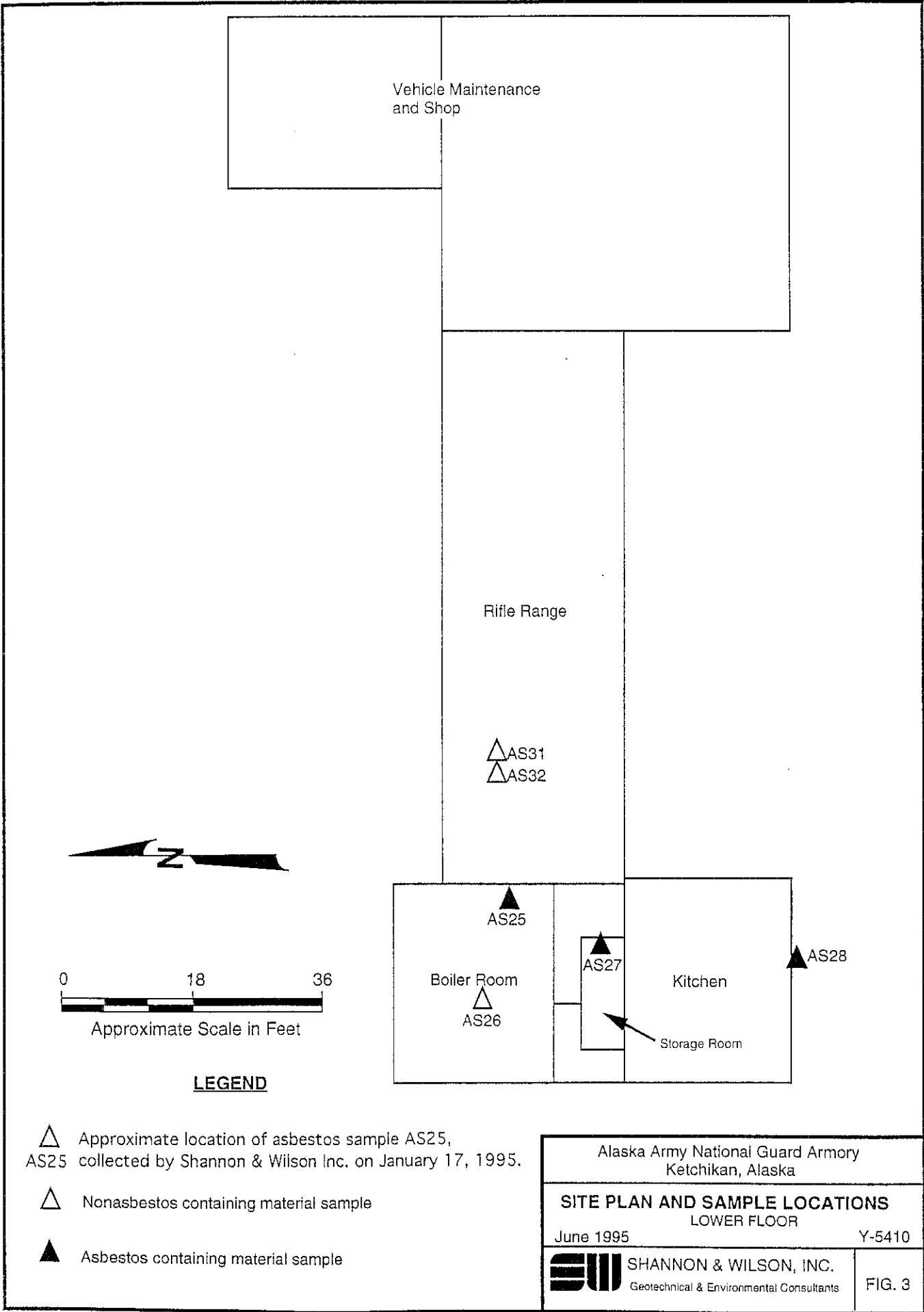
NM Quantities for this item not measured



LEGEND

- △ AS1 Approximate location of asbestos sample AS1, collected by Shannon & Wilson Inc. on January 17, 1995.
- △ Nonasbestos containing material sample
- ▲ Asbestos containing material sample

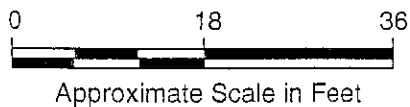
Alaska Army National Guard Armory Ketchikan, Alaska	
SITE PLAN AND SAMPLE LOCATIONS	
MAIN FLOOR	
June 1995	Y-5410
SHANNON & WILSON, INC. Geotechnical & Environmental Consultants	FIG. 2



Vehicle Maintenance
and Shop

Rifle Range

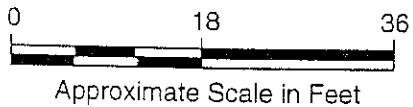
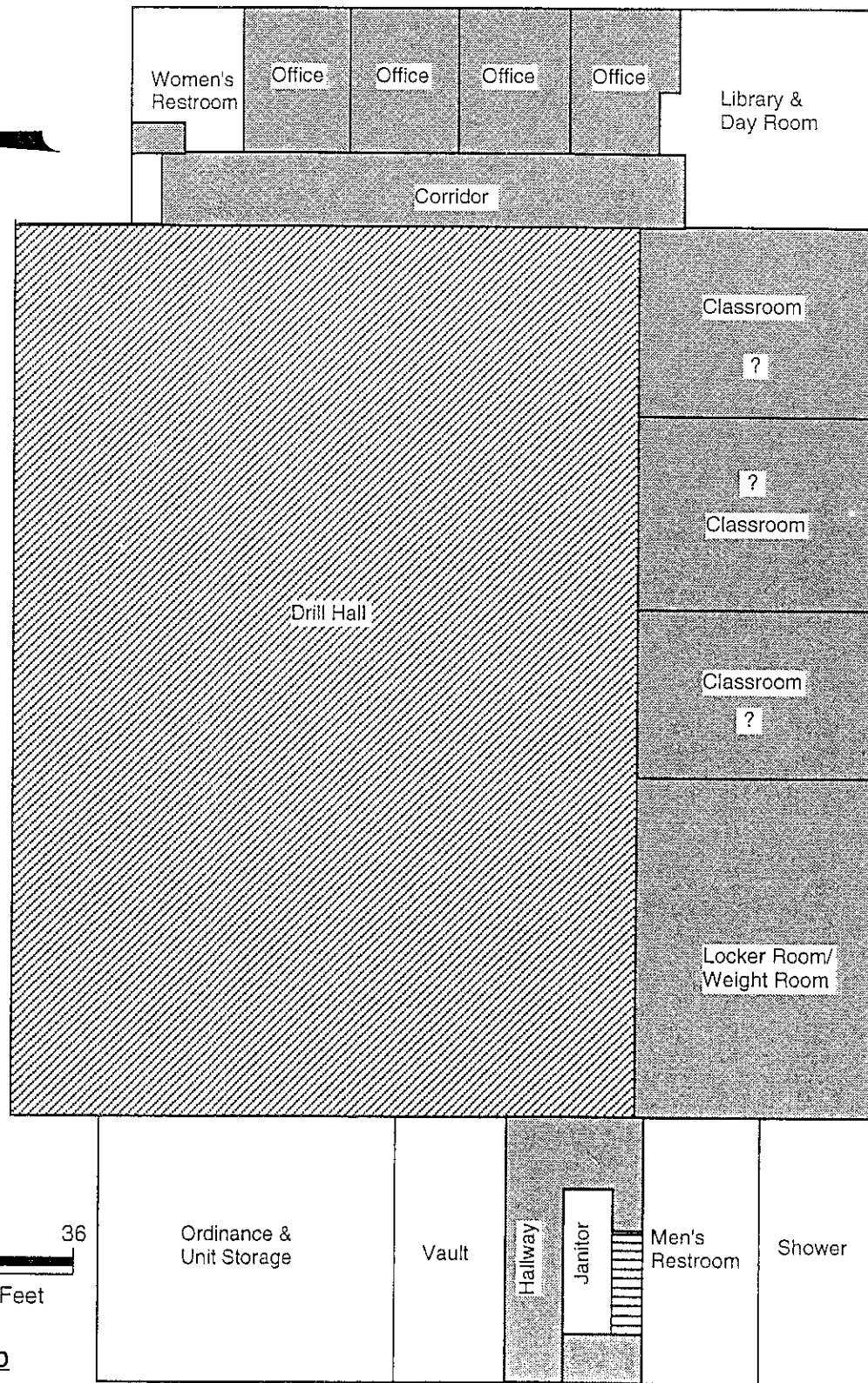
△ AS31
△ AS32



LEGEND

- △ Approximate location of asbestos sample AS25, AS25 collected by Shannon & Wilson Inc. on January 17, 1995.
- △ Nonasbestos containing material sample
- ▲ Asbestos containing material sample

Alaska Army National Guard Armory Ketchikan, Alaska	
SITE PLAN AND SAMPLE LOCATIONS LOWER FLOOR	
June 1995	Y-5410
SHANNON & WILSON, INC. Geotechnical & Environmental Consultants	
FIG. 3	



LEGEND



Asbestos containing, black, floor tile mastic, tile beneath white linoleum and brown carpeting



Asbestos containing, black tar paper, beneath gym floor, and cork subfloor

Note: Asbestos containing pipe insulation found above ceiling in bathrooms and shower rooms

Alaska Army National Guard Armory
Ketchikan, Alaska

**DETAILED SITE PLAN-ASBESTOS
CONTAINING MATERIALS**

June 1995

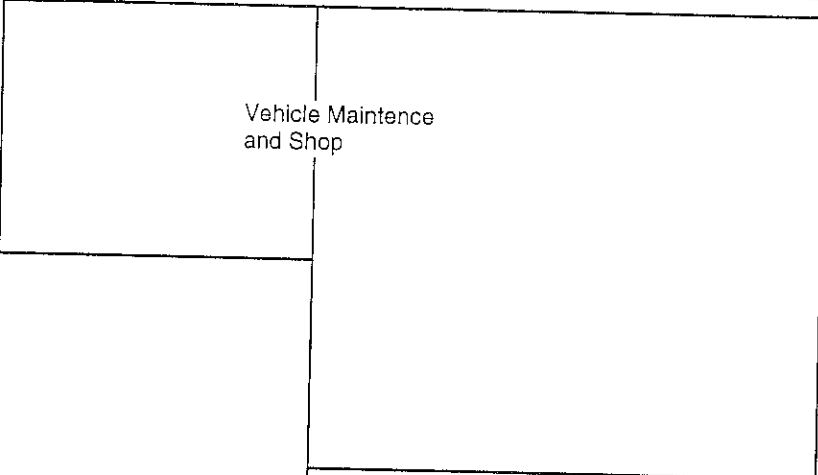
MAIN FLOOR

Y-5410

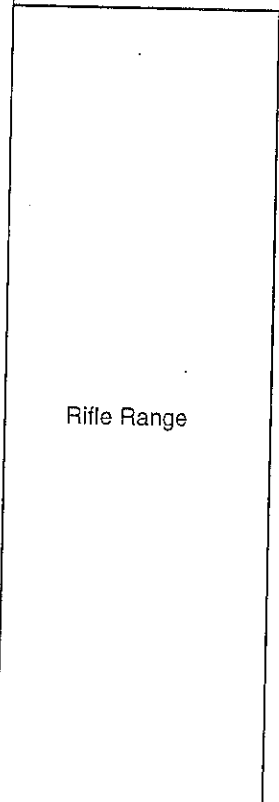


SHANNON & WILSON, INC.
Geotechnical & Environmental Consultants

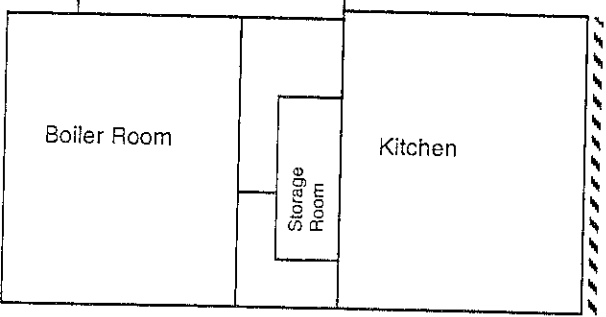
FIG. 4



Vehicle Maintenance
and Shop



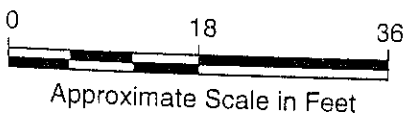
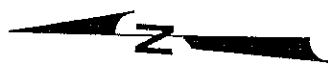
Rifle Range



Boiler Room

Storage
Room


Kitchen



LEGEND

Asbestos containing, gray, amosite board on exterior wall of decorative block wall

Note: Asbestos containing pipe insulation found throughout building

Alaska Army National Guard Armory Ketchikan, Alaska		
DETAILED SITE PLAN-ASBESTOS CONTAINING MATERIALS		
June 1995	LOWER FLOOR	Y-5410
	SHANNON & WILSON, INC. Geotechnical & Environmental Consultants	FIG. 5

