

EXHIBIT B

OCS Organizational Charts

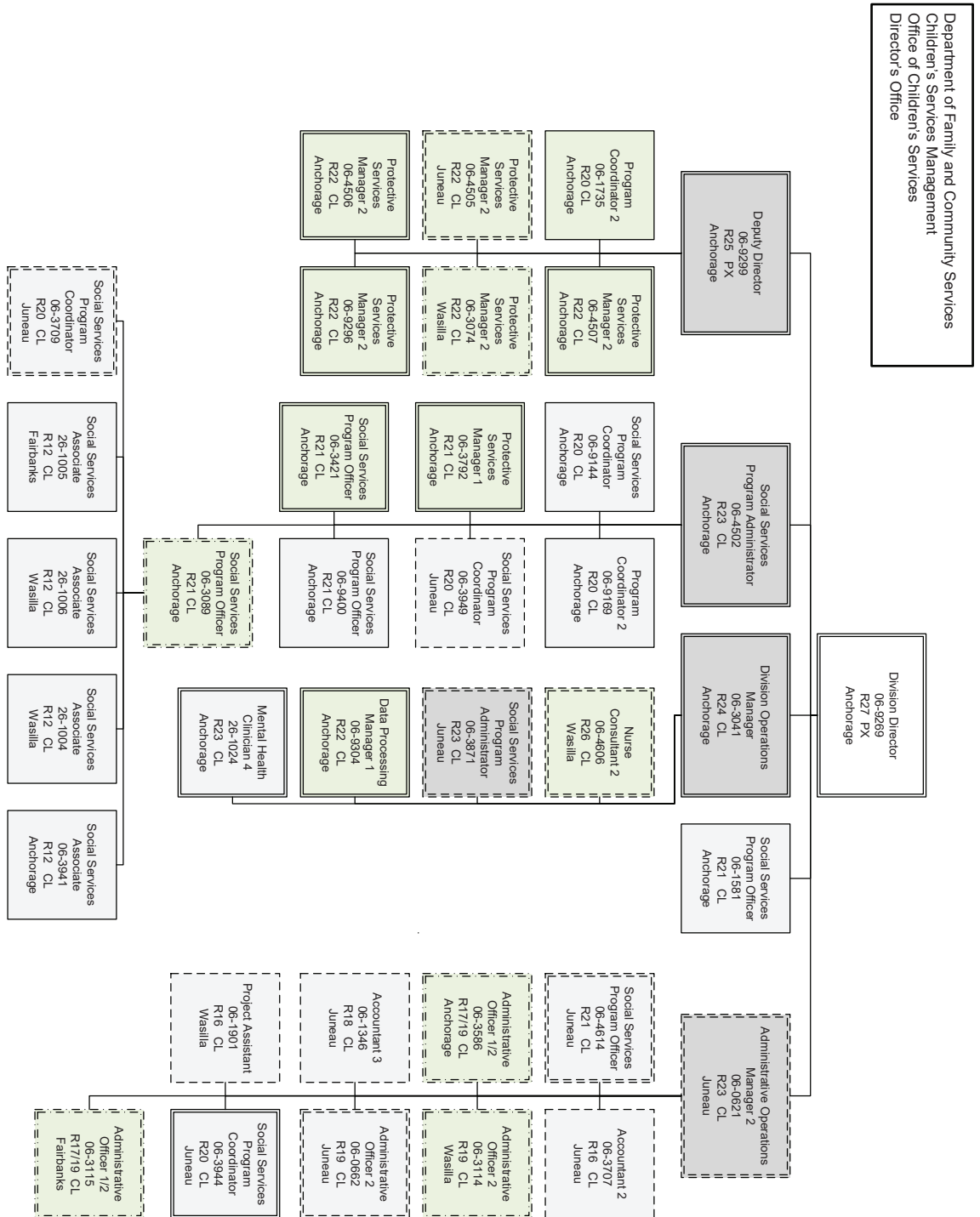


EXHIBIT B

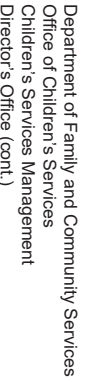


EXHIBIT B

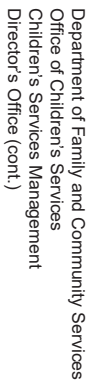
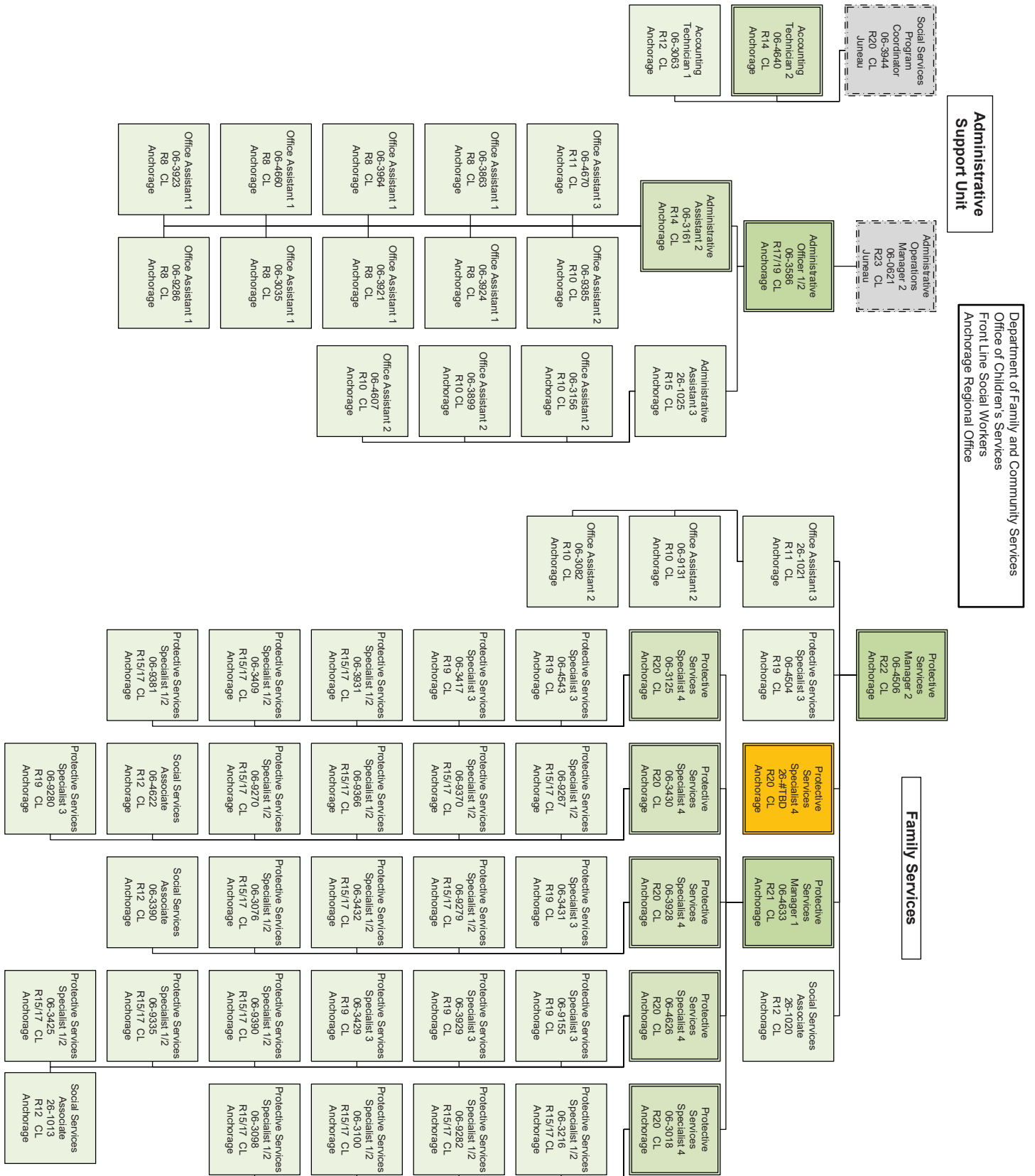


EXHIBIT B

OCS Organizational Charts



Department of Family and Community Services
Office of Children's Services
Front Line Social Workers
Anchorage Regional Office (cont.)



EXHIBIT B

OCS Organizational Charts



EXHIBIT B

OCS Organizational Charts

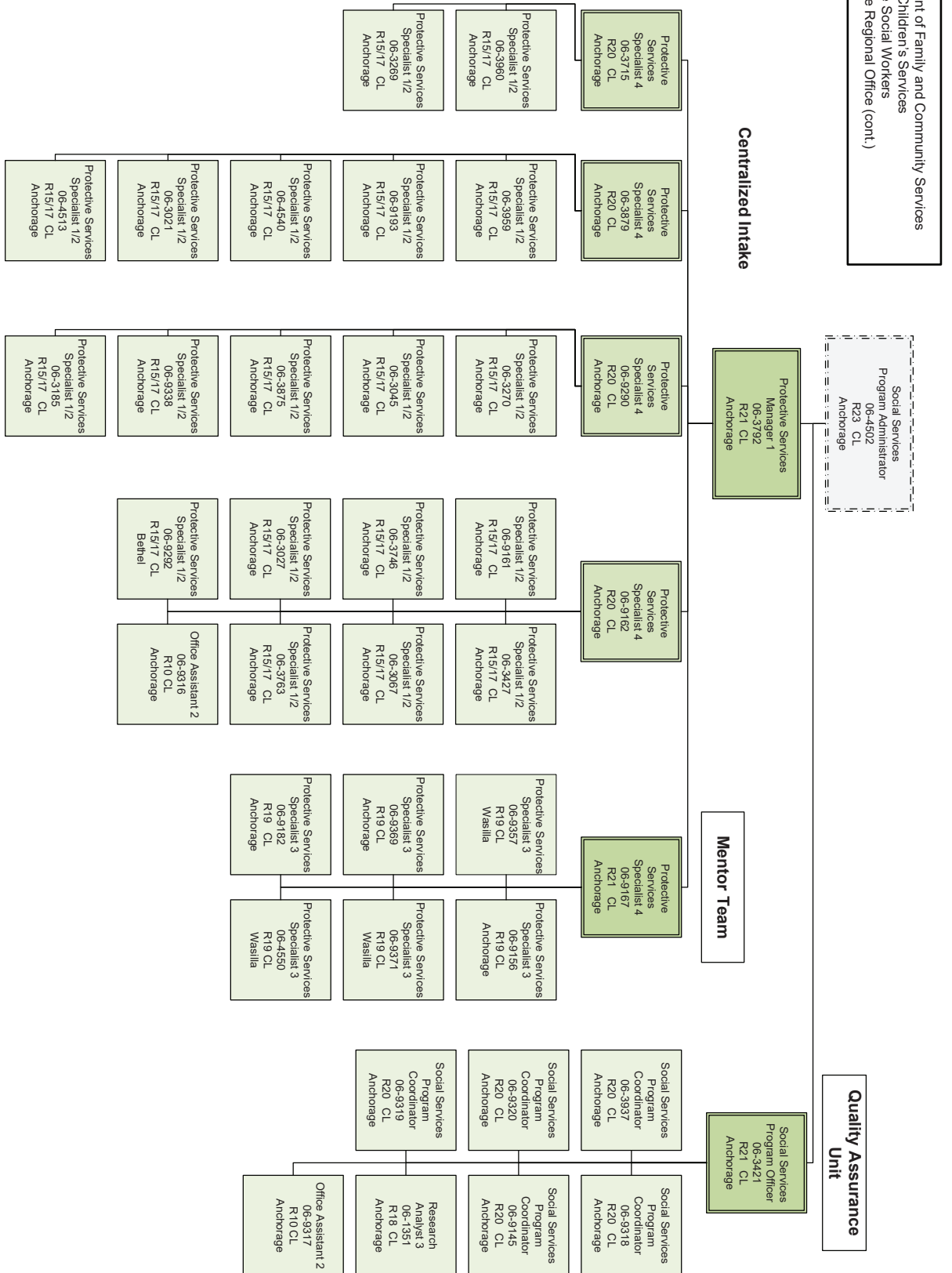


EXHIBIT B

OCS Organizational Charts

Department of Family and Community Services
Office of Children's Services
Front Line Social Workers
Northern Regional Office

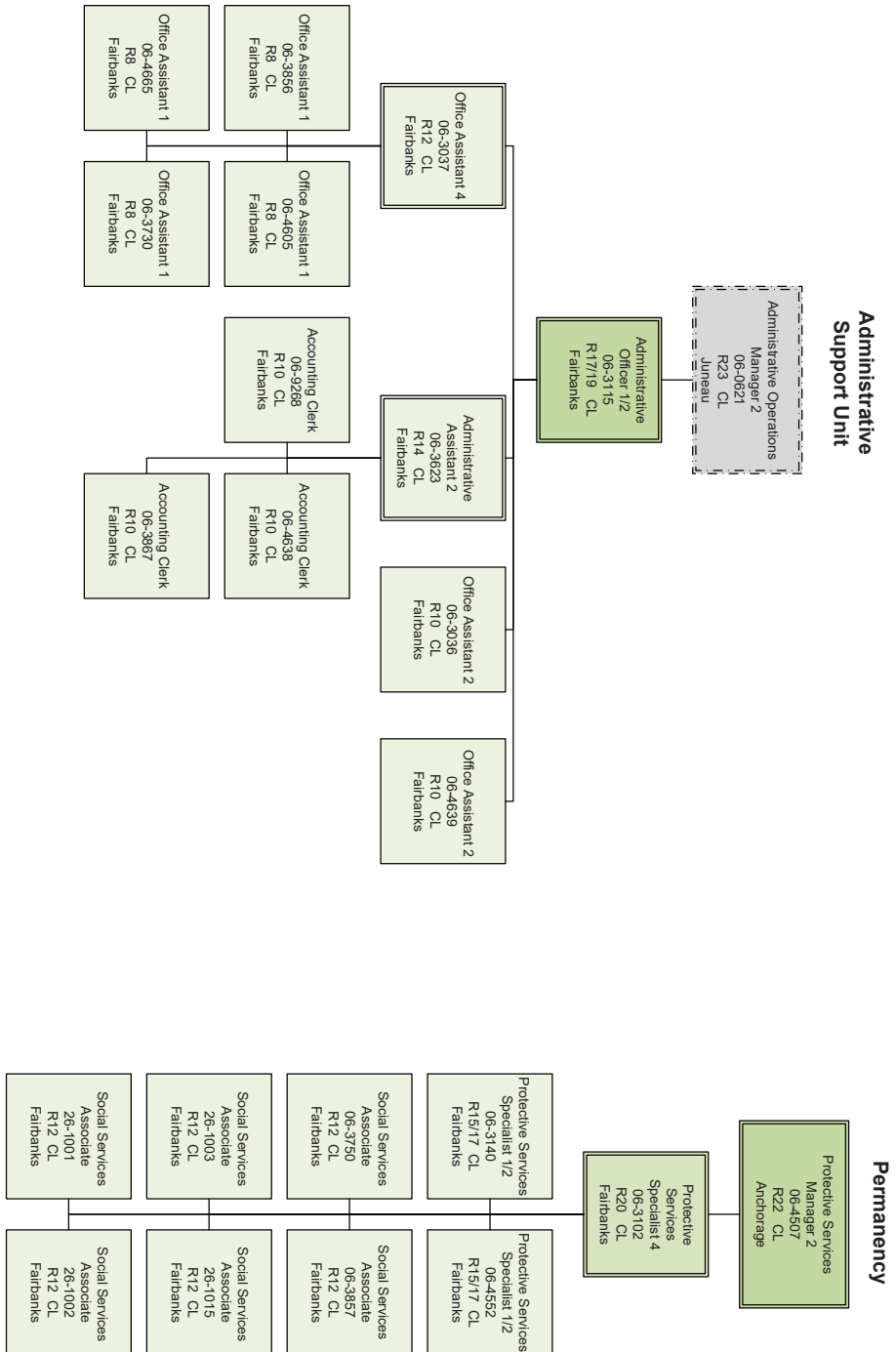


EXHIBIT B

OCS Organizational Charts

Department of Family and Community Services
Office of Children's Services
Front Line Social Workers
Northern Regional Office (cont.)

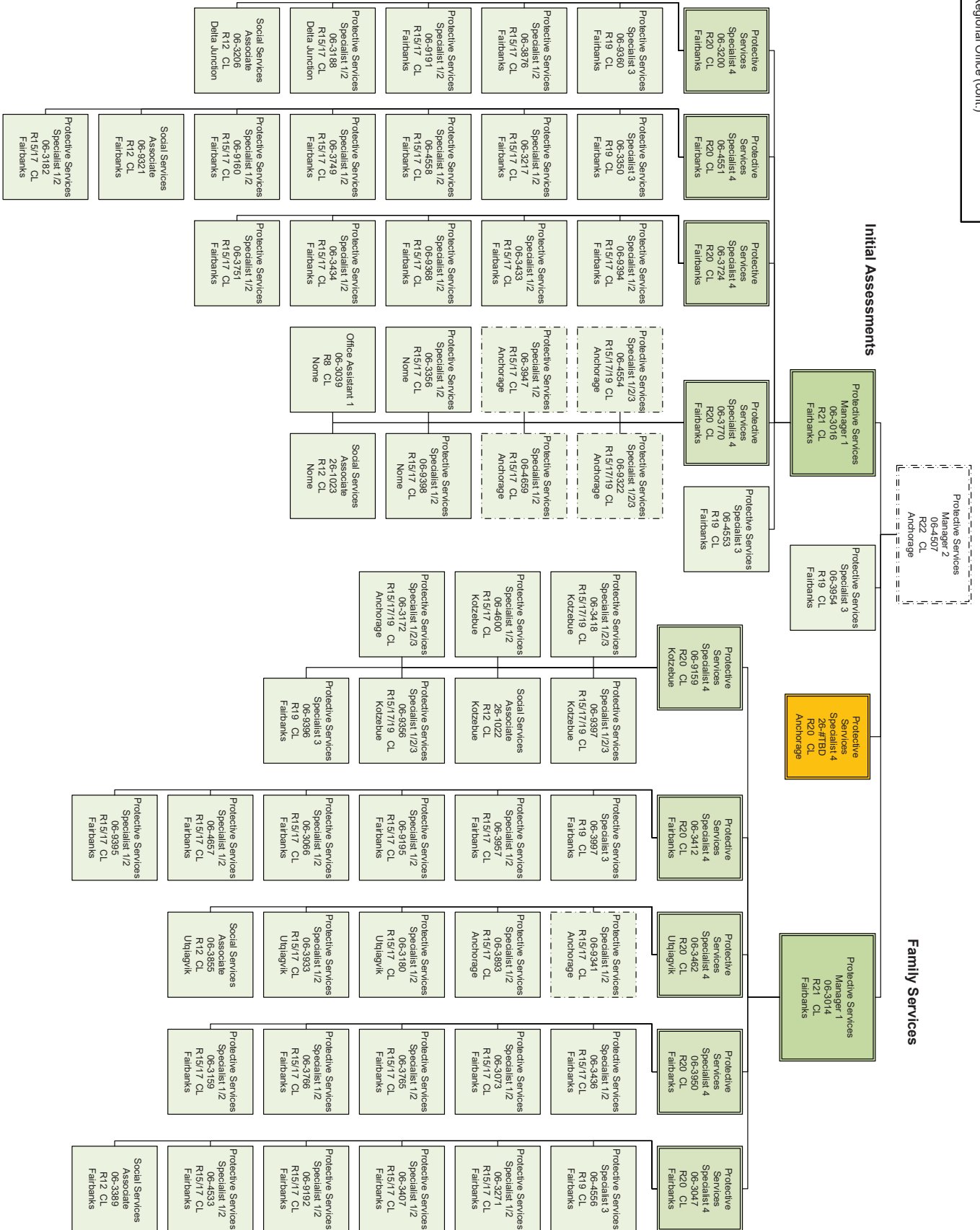
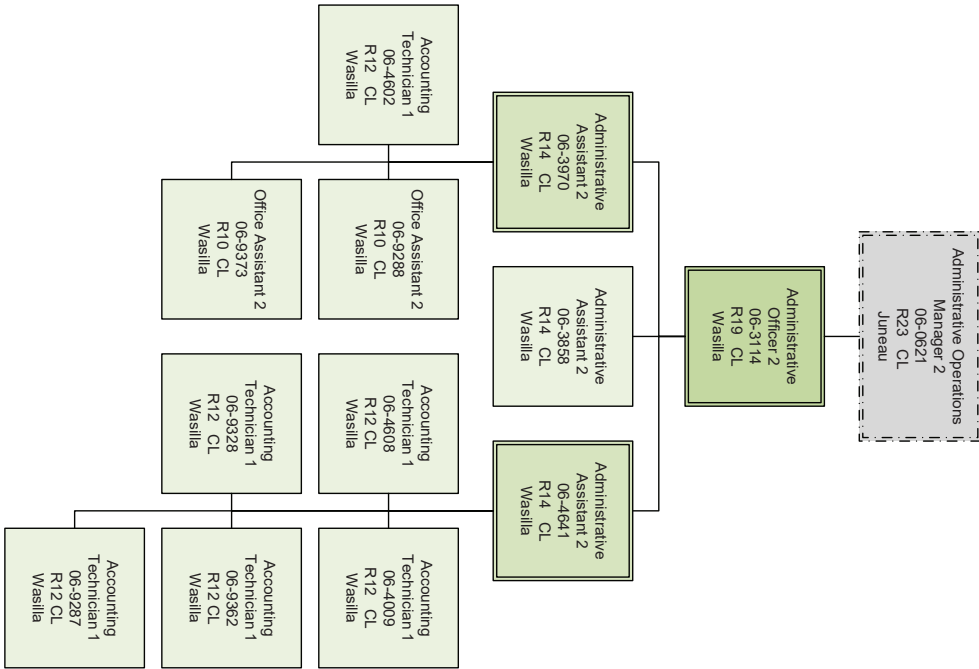


EXHIBIT B

OCS Organizational Charts

Administrative Unit



Eligibility Unit

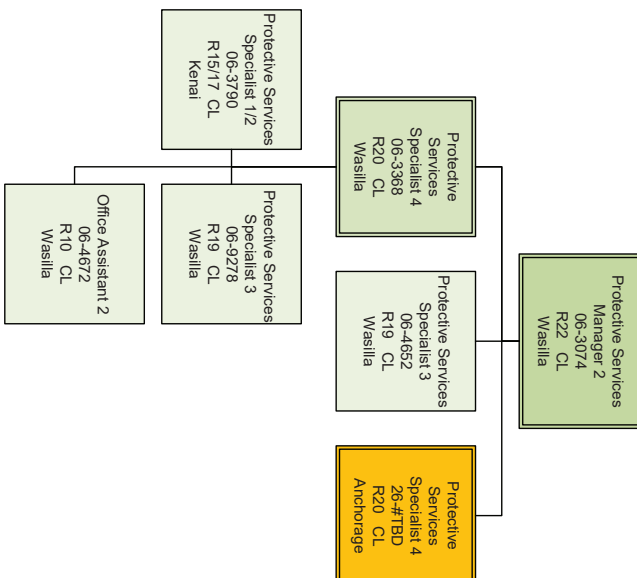
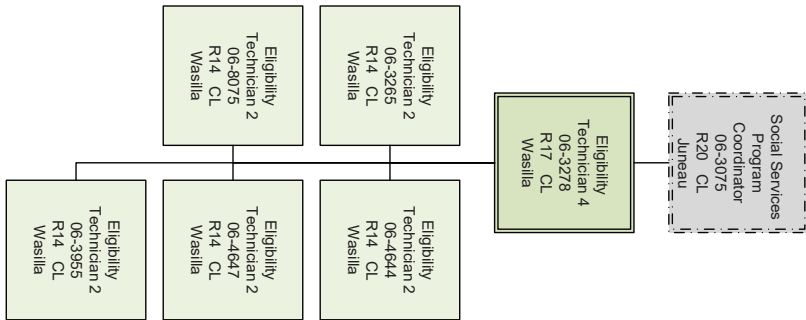


EXHIBIT B

OCS Organizational Charts

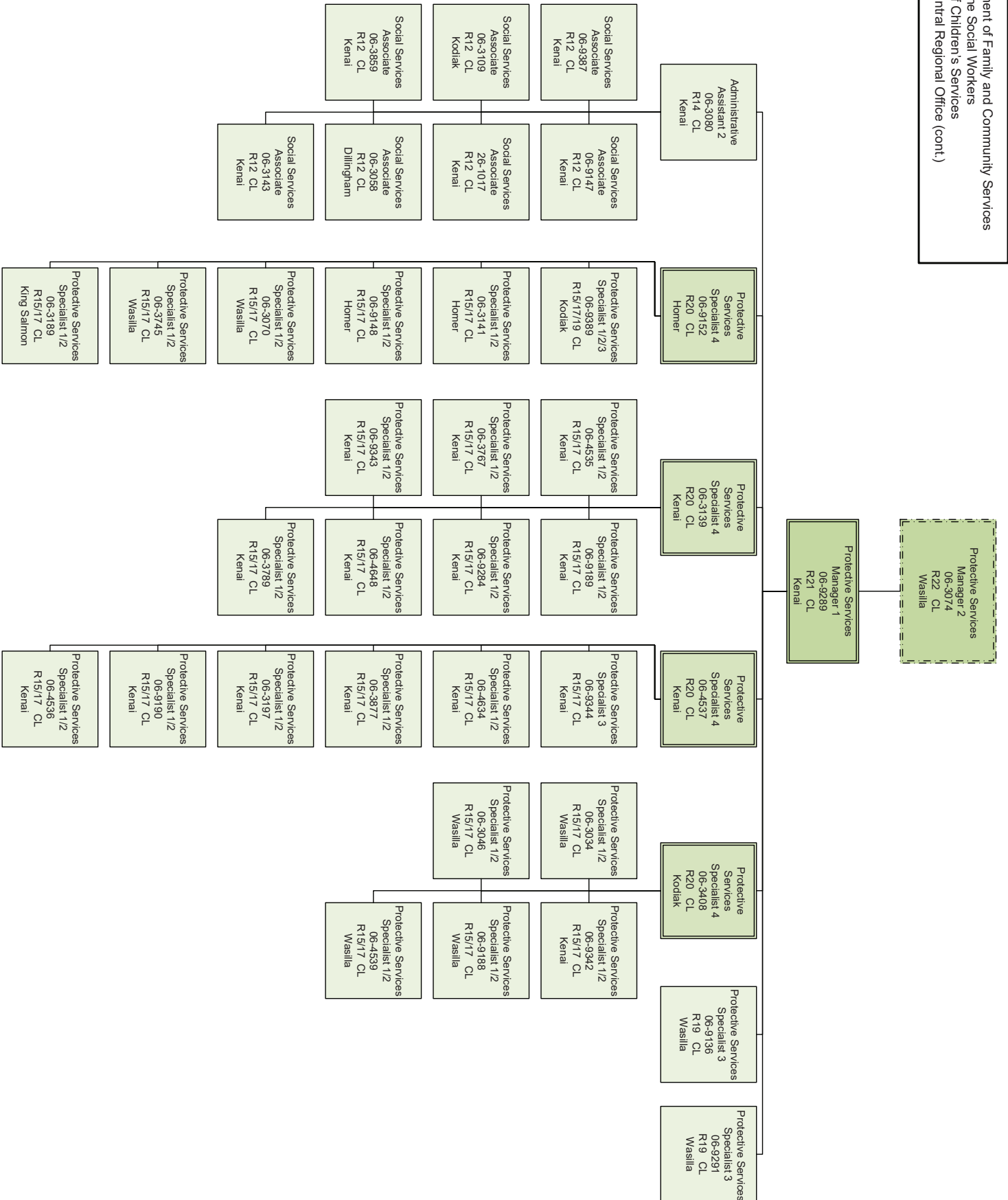


EXHIBIT B

OCS Organizational Charts

Department of Family and Community Services
Front Line Social Workers
Office of Children's Services
Southcentral Regional Office (cont.)

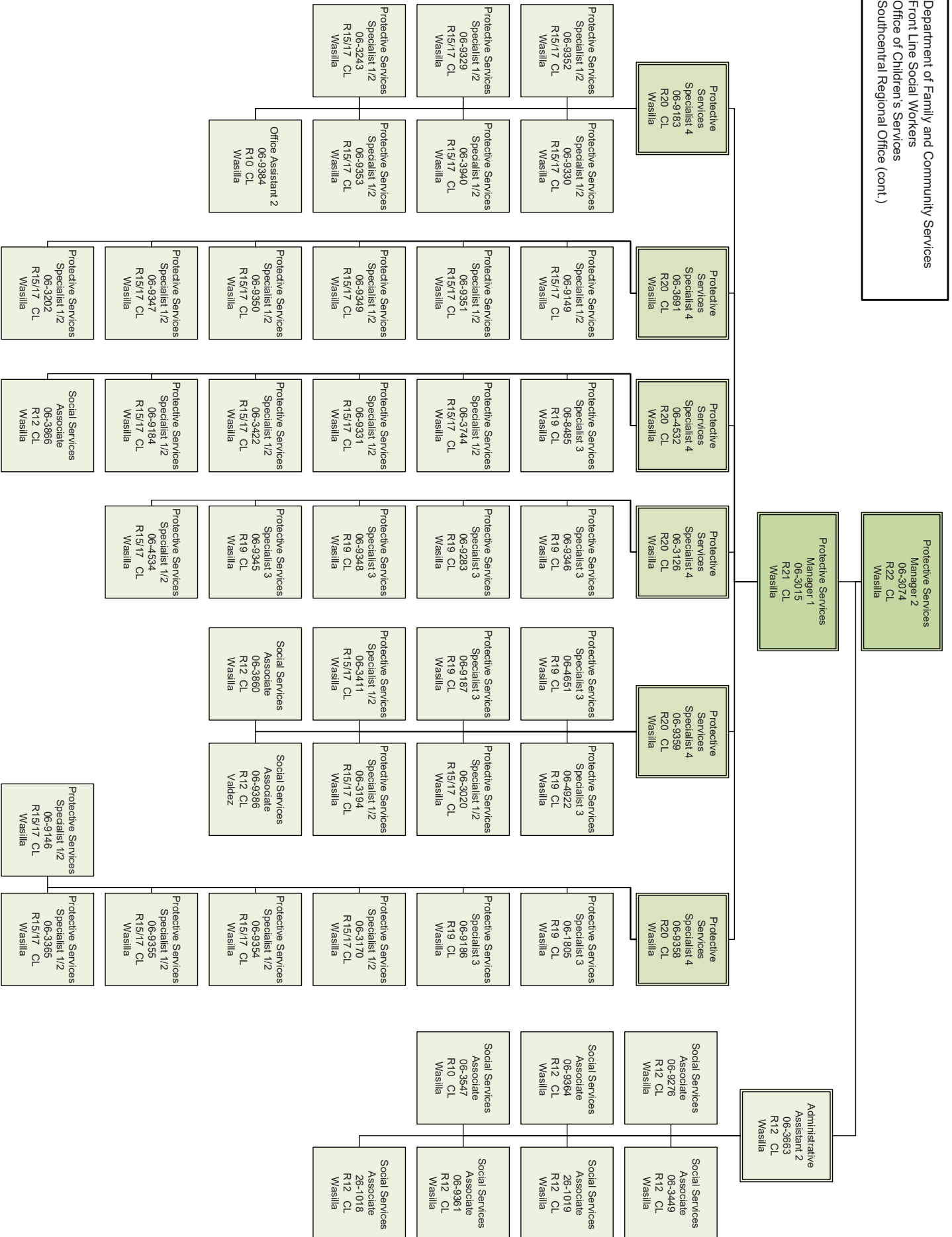


EXHIBIT B

OCS Organizational Charts

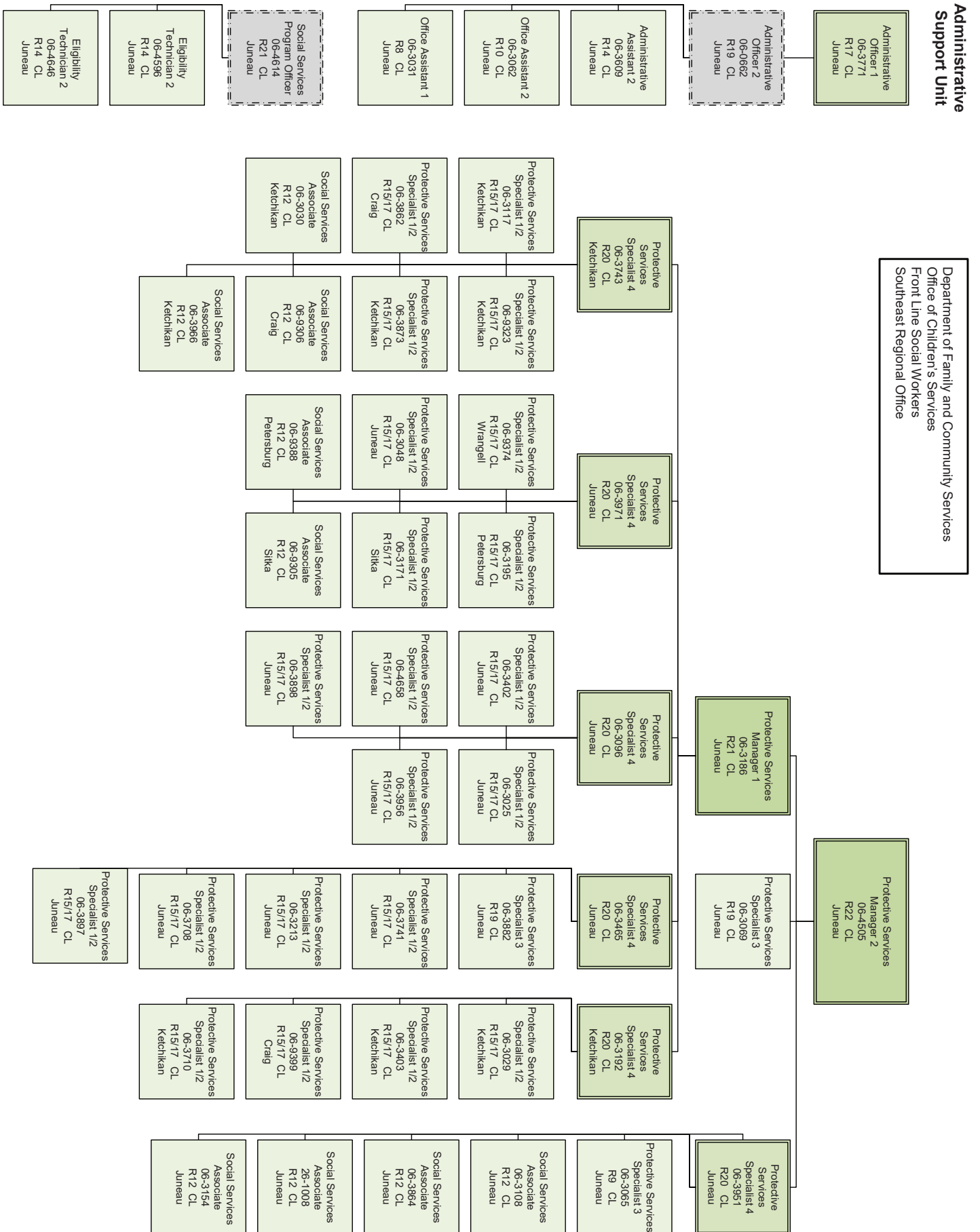


EXHIBIT B

OCS Organizational Charts

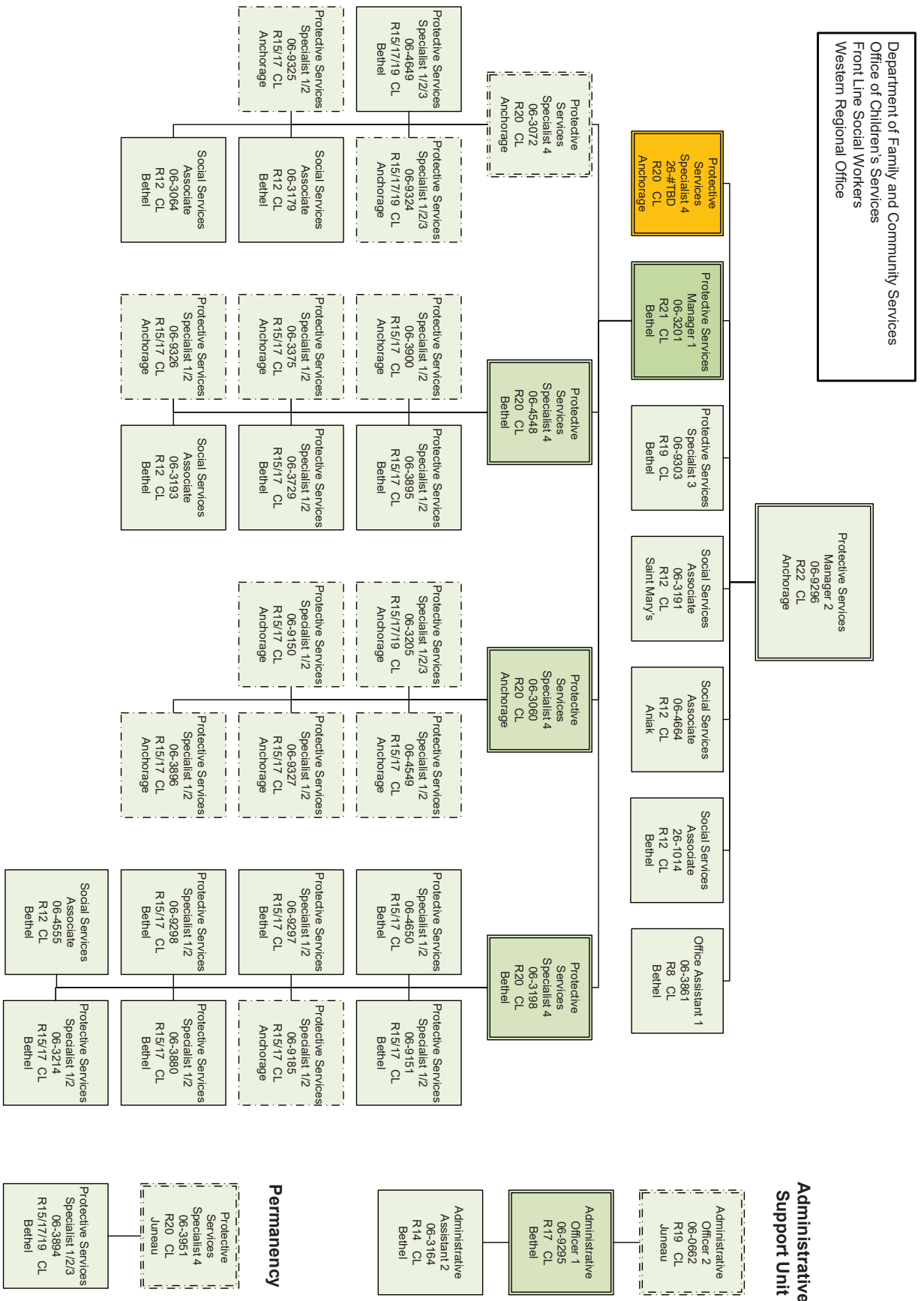


EXHIBIT B

OCS Organizational Charts

Department of Family and Community Services
Office of Children's Services
Front Line Social Workers
Foster Care Licensing / Independent Living
Program / Nursing

Licensing Unit

Social Services Program
Office
06-3008
R21 CL
Juneau

Community Care
Licensing Specialist 3
06-9273
R20 CL
Anchorage

Community Care
Licensing Specialist 2
06-3176
R18 CL
Anchorage

Community Care
Licensing Specialist 2
06-9176
R18 CL
Anchorage

Community Care
Licensing Specialist 2
06-9274
R18 CL
Kenai

Community Care
Licensing Specialist 2
06-3077
R18 CL
Wasilla

Community Care
Licensing Specialist 2
06-4524
R18 CL
Fairbanks

Community Care
Licensing Specialist 2
06-3370
R18 CL
Kenichan

Community Care
Licensing Specialist 2
06-3902
R18 CL
Fairbanks

Community Care
Licensing Specialist 1
06-3119
R16 CL
Anchorage

Community Care
Licensing Specialist 1
06-4545
R16 CL
Anchorage

Community Care
Licensing Specialist 1
06-9178
R16 CL
Kenai

Community Care
Licensing Specialist 1
06-9177
R16 CL
Wasilla

Community Care
Licensing Specialist 1
06-9180
R16 CL
Wasilla

Community Care
Licensing Specialist 1
06-9175
R16 CL
Juneau

Community Care
Licensing Specialist 1
06-4557
R16 CL
Fairbanks

Community Care
Licensing Specialist 1
06-3976
R16 CL
Anchorage

Community Care
Licensing Specialist 1
06-3903
R16 CL
Anchorage

Community Care
Licensing Specialist 1
06-3398
R16 CL
Kenai

Community Care
Licensing Specialist 1
06-9285
R16 CL
Wasilla

Community Care
Licensing Specialist 1
06-3012
R16 CL
Bethel

Community Care
Licensing Specialist 1
06-3367
R16 CL
Kenichan

Community Care
Licensing Specialist 1
06-9181
R16 CL
Fairbanks

Community Care
Licensing Specialist 1
06-9172
R16 CL
Anchorage

Community Care
Licensing Specialist 1
06-9173
R16 CL
Anchorage

Community Care
Licensing Specialist 1
06-9179
R16 CL
Wasilla

Community Care
Licensing Specialist 1
06-9332
R16 CL
Wasilla

Community Care
Licensing Specialist 1
06-4819
R16 CL
Bethel

Community Care
Licensing Specialist 1
06-3369
R16 CL
Fairbanks

Community Care
Licensing Specialist 1
06-4655
R16 CL
Fairbanks

Community Care
Licensing Specialist 1
06-3366
R16 CL
Anchorage

Community Care
Licensing Specialist 1
06-9337
R16 CL
Anchorage

Community Care
Licensing Specialist 1
06-4653
R16 CL
Wasilla

Community Care
Licensing Specialist 1
06-9333
R16 CL
Wasilla

Community Care
Licensing Specialist 1
06-3369
R16 CL
Fairbanks

Community Care
Licensing Specialist 1
06-3369
R16 CL
Fairbanks

Community Care
Licensing Specialist 1
06-3369
R16 CL
Fairbanks

Community Care
Licensing Specialist 1
06-3883
R16 CL
Anchorage

Community Care
Licensing Specialist 1
06-9174
R16 CL
Anchorage

Community Care
Licensing Specialist 1
06-4653
R16 CL
Wasilla

Community Care
Licensing Specialist 1
06-9333
R16 CL
Wasilla

Community Care
Licensing Specialist 1
06-3369
R16 CL
Fairbanks

Community Care
Licensing Specialist 1
06-3369
R16 CL
Fairbanks

Community Care
Licensing Specialist 1
06-3369
R16 CL
Fairbanks

Office Assistant 2
06-3033
R10 CL
Anchorage

Independent Living Unit

Protective Services
Specialist 4
06-1530
R20 CL
Juneau

Protective Services
Specialist 3
06-9301
R19 CL
Fairbanks

Protective Services
Specialist 3
06-9140
R19 CL
Wasilla

Protective Services
Specialist 3
06-9142
R19 CL
Fairbanks

Protective Services
Specialist 3
06-9143
R19 CL
Anchorage

Protective Services
Specialist 3
06-9302
R19 CL
Anchorage

Protective Services
Specialist 3
06-9334
R19 CL
Wasilla

Protective Services
Specialist 1/2
06-9141
R15/17 CL
Juneau

Office Assistant 2
06-9813
R10 CL
Anchorage

Nursing Unit

Nurse
Consultant 2
06-4606
R26 CL
Anchorage

Project Assistant
06-4616
R16 CL
Anchorage

Nurse
Consultant 1
06-4604
R24 CL
Wasilla

Nurse
Consultant 1
06-4601
R24 CL
Fairbanks

Nurse
Consultant 1
06-4603
R24 CL
Anchorage

Mental Health
Clinician 3
06-4642
R21 CL
Anchorage

Office Assistant 2
06-9363
R10 CL
Wasilla