

**STATE OF ALASKA RFP NUMBER 2524S007
AMENDMENT NUMBER ONE**

AMENDMENT ISSUING OFFICE:



Department of Transportation & Public Facilities
Statewide Contracting & Procurement
P.O. Box 112500
(3132 Channel Drive, Room 310)
Juneau, Alaska 99811-2500

THIS IS NOT AN ORDER

DATE AMENDMENT ISSUED: April 27, 2023

**ITB TITLE:
JANITORIAL SERVICES FOR THE STATE OFFICE BUILDING (SOB) JUNEAU, ALASKA**

ITB DUE DATE: May 16, 2023, at 2:30PM.

This amendment also serves to answer the following question:

Q. Can you share a floor plan with square footage of the property?

A. The Gross Sq. foot of the building is 287,850, the "Usable" Sq. foot of the building is 169,800. Please see attached floor plan.

Q. Is there a NTE for this bid, can you share what the cost is for this work and supplies now?

A. There is no not to exceed amount for this bid. The current contract has an annual rate of \$287,410.88.

Q. How many full-time employees work on this project now or how many hours per month needed to meet the scope of work requirements?

A. The State does not have this information.

This amendment also serves to schedule a site visit:

Site Visit- May 2nd, 2023 at 10:00am

State Office Building
333 Willoughby Ave
Juneau, Ak 99801

We will meet on P2, just inside the Willoughby Ave. Street entrance (Directly across the street from Bullwinkle's Pizza). Please call Heather Pedersen, 907-465-8558, with any questions or if you are having trouble finding the location.

Heather Pedersen
Procurement Specialist V

STATE OF ALASKA
DIVISION OF GENERAL SERVICES
AS BUILT DRAWINGS
JUNEAU, ALASKA



SHEET TITLE

STATE

OFFICE BLDG

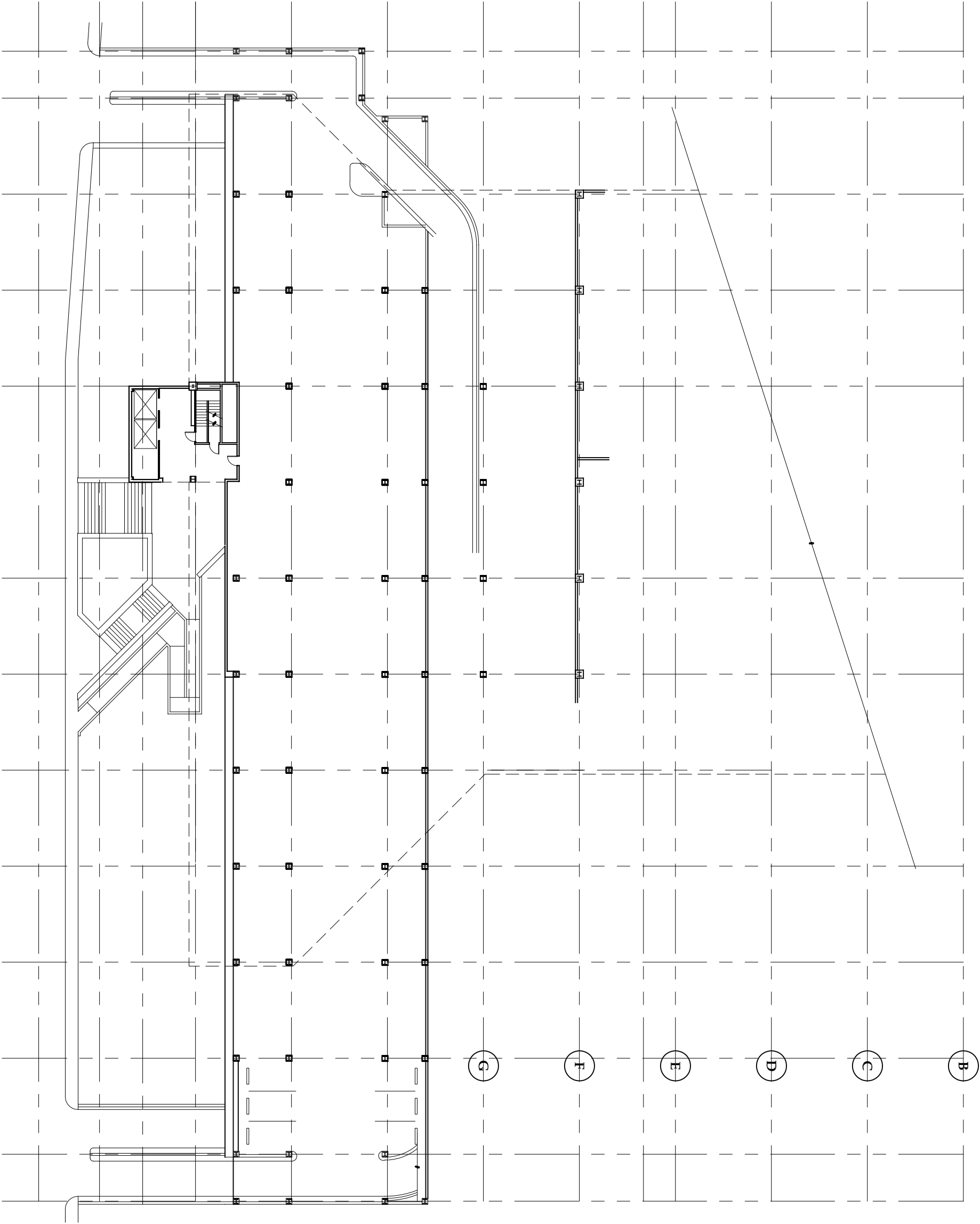
FOURTH FLOOR

PLAN

DATE: NOVEMBER 2010

FILE: 10079

A204



1 FOURTH FLOOR PLAN

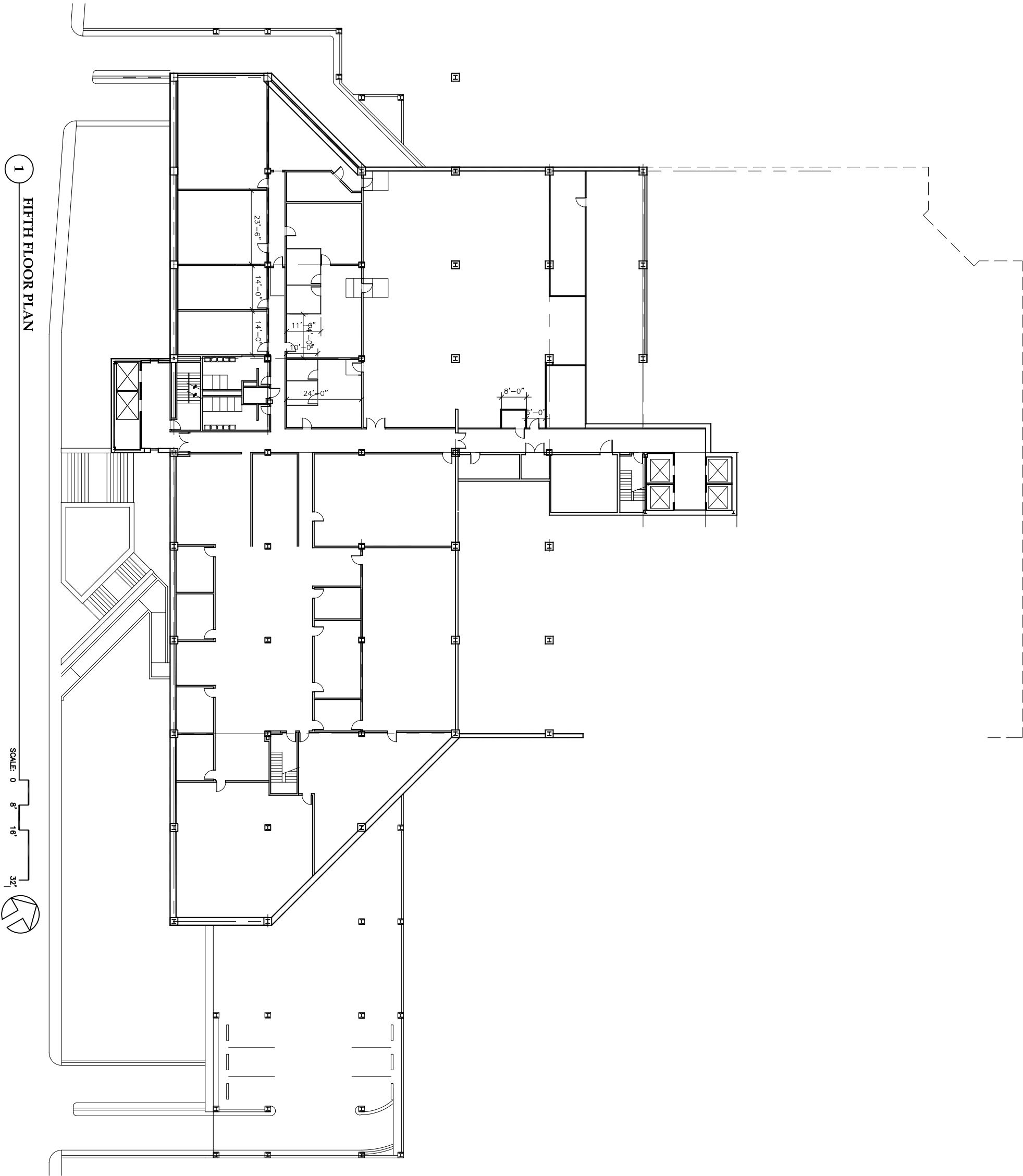
SCALE: 0 8' 16' 32'



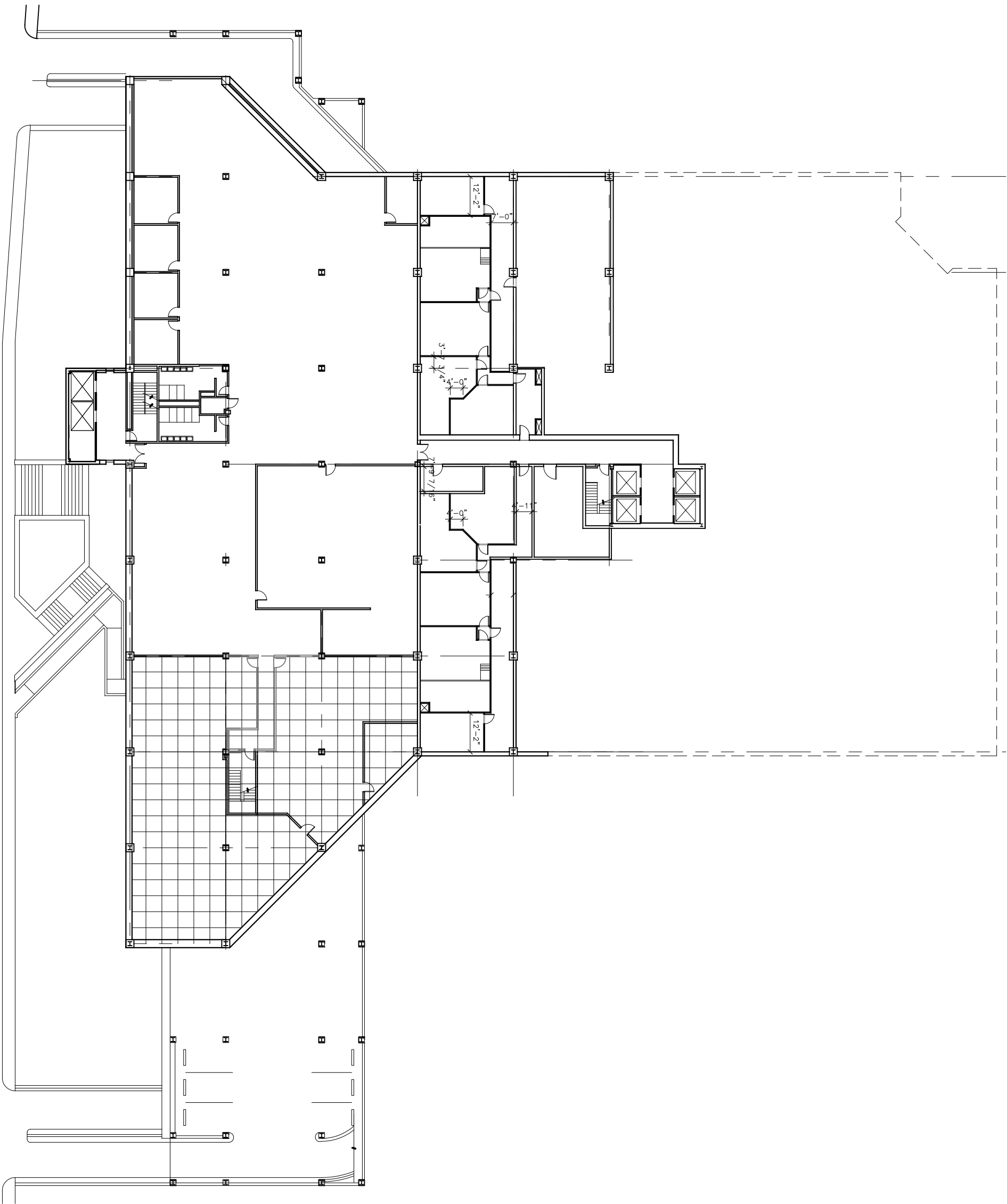
STATE OF ALASKA
DIVISION OF GENERAL SERVICES
AS BUILT DRAWINGS
JUNEAU, ALASKA

SHEET TITLE
STATE
OFFICE BLDG
FIFTH FLOOR
PLAN
DATE: NOVEMBER 2010
FILE: 10079

A205



STATE OF ALASKA
DIVISION OF GENERAL SERVICES
AS BUILT DRAWINGS
JUNEAU, ALASKA



SIXTH FLOOR PLAN

1

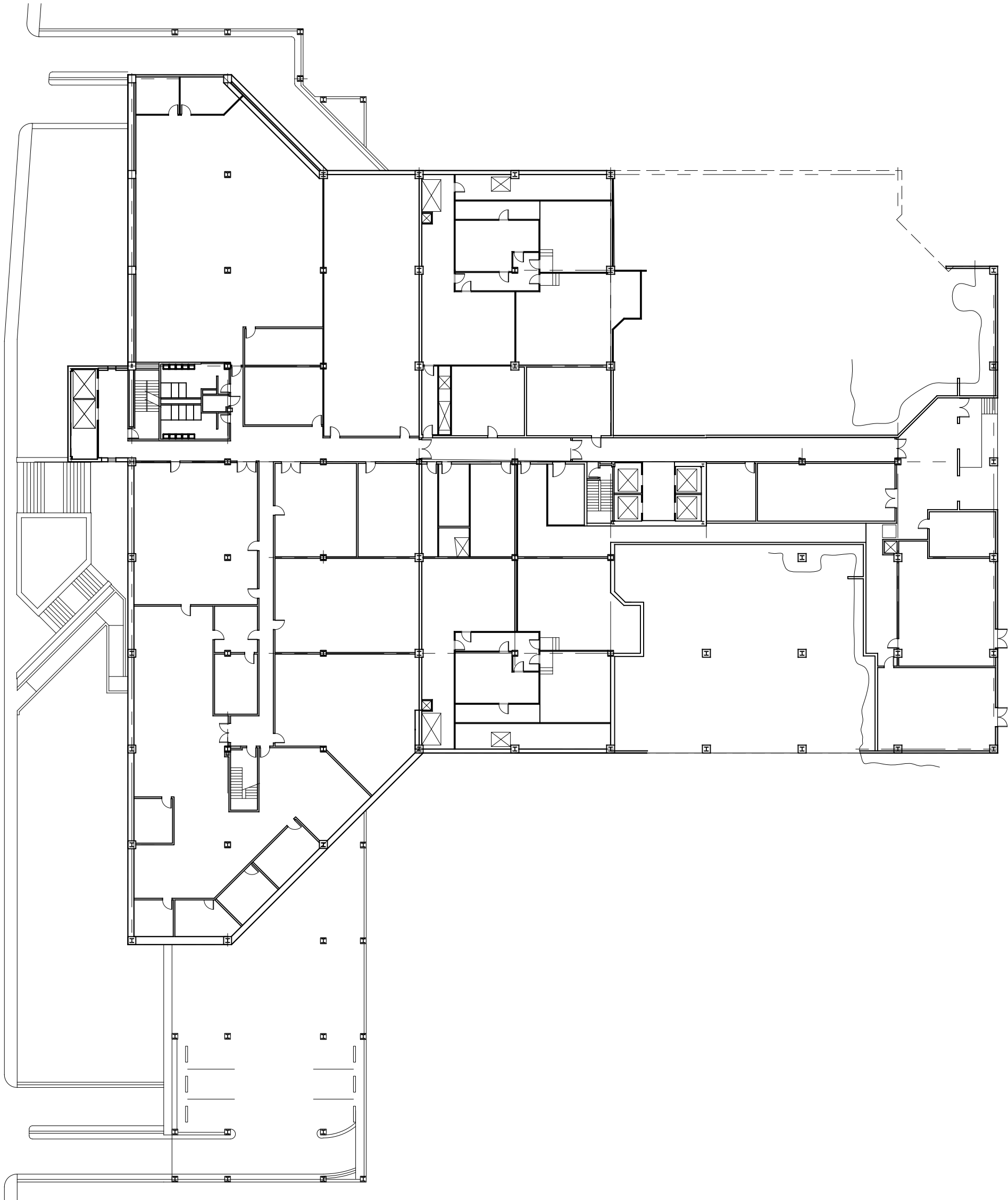
SCALE: 0 8' 16' 32'



A206

SHEET TITLE
STATE
OFFICE BLDG
SIXTH FLOOR
PLAN
DATE: NOVEMBER 2010
FILE: 10079

STATE OF ALASKA
DIVISION OF GENERAL SERVICES
AS BUILT DRAWINGS
JUNEAU, ALASKA



1 SEVENTH FLOOR PLAN

SCALE: 0 8 16 32'



A207

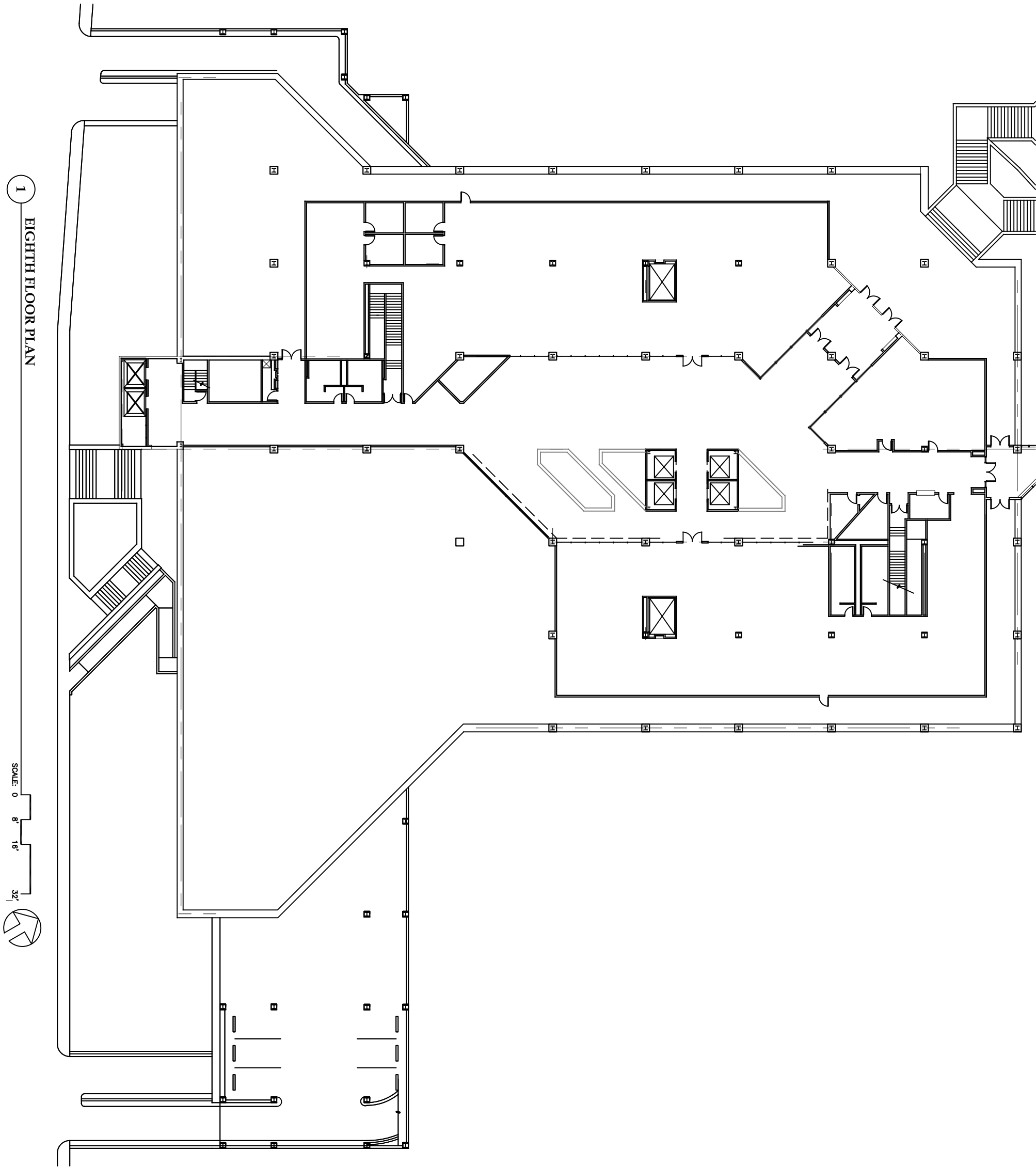
SHEET TITLE
STATE
OFFICE BLDG
SEVENTH FLOOR
PLAN
DATE: NOVEMBER 2010
FILE: 10079

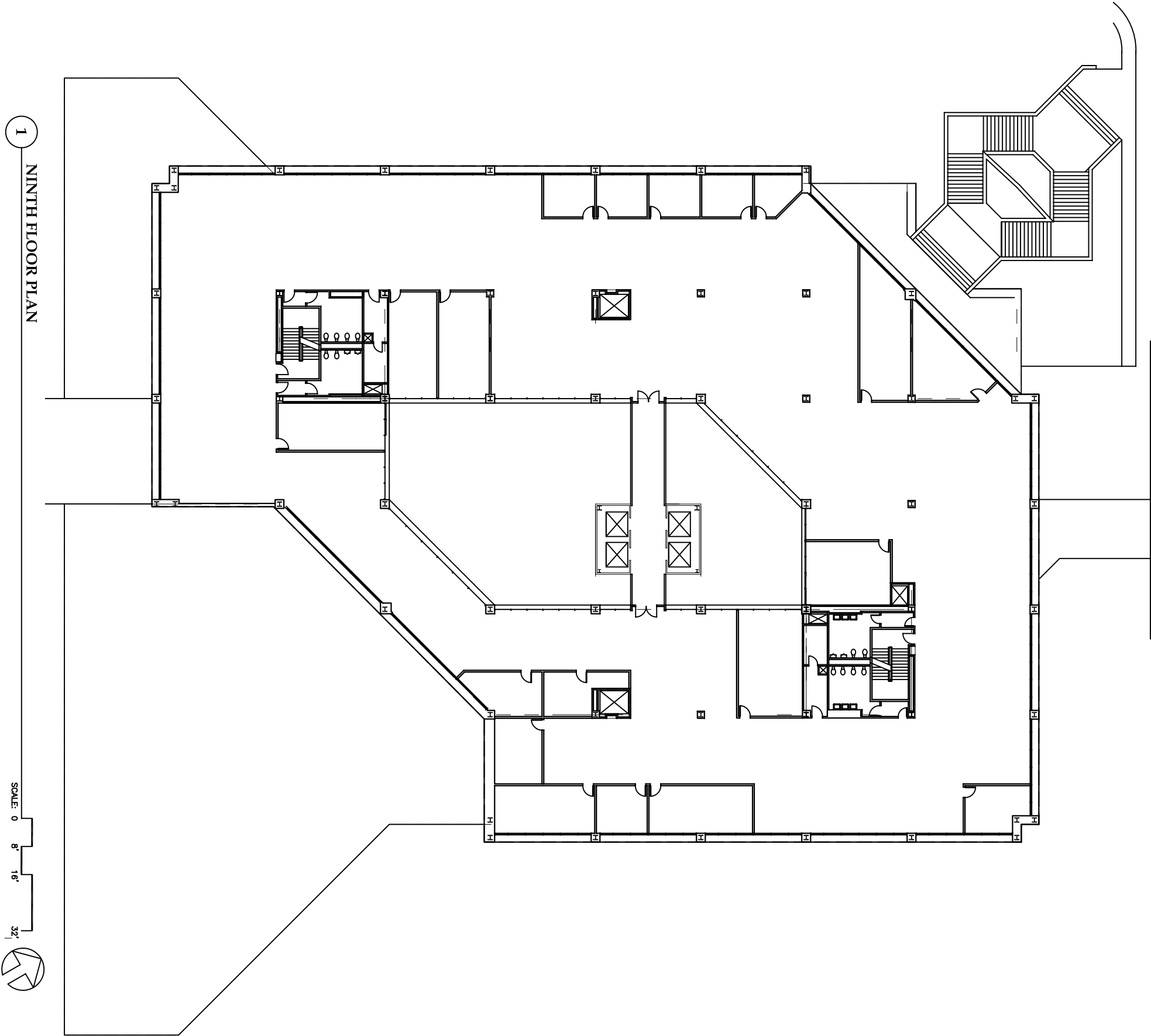
STATE OF ALASKA
DIVISION OF GENERAL SERVICES
AS BUILT DRAWINGS
JUNEAU, ALASKA

100%
AS BUILT

SHEET TITLE
STATE
OFFICE BLDG
EIGHT FLOOR
PLAN
DATE: NOVEMBER 2010
FILE: 10079

A208

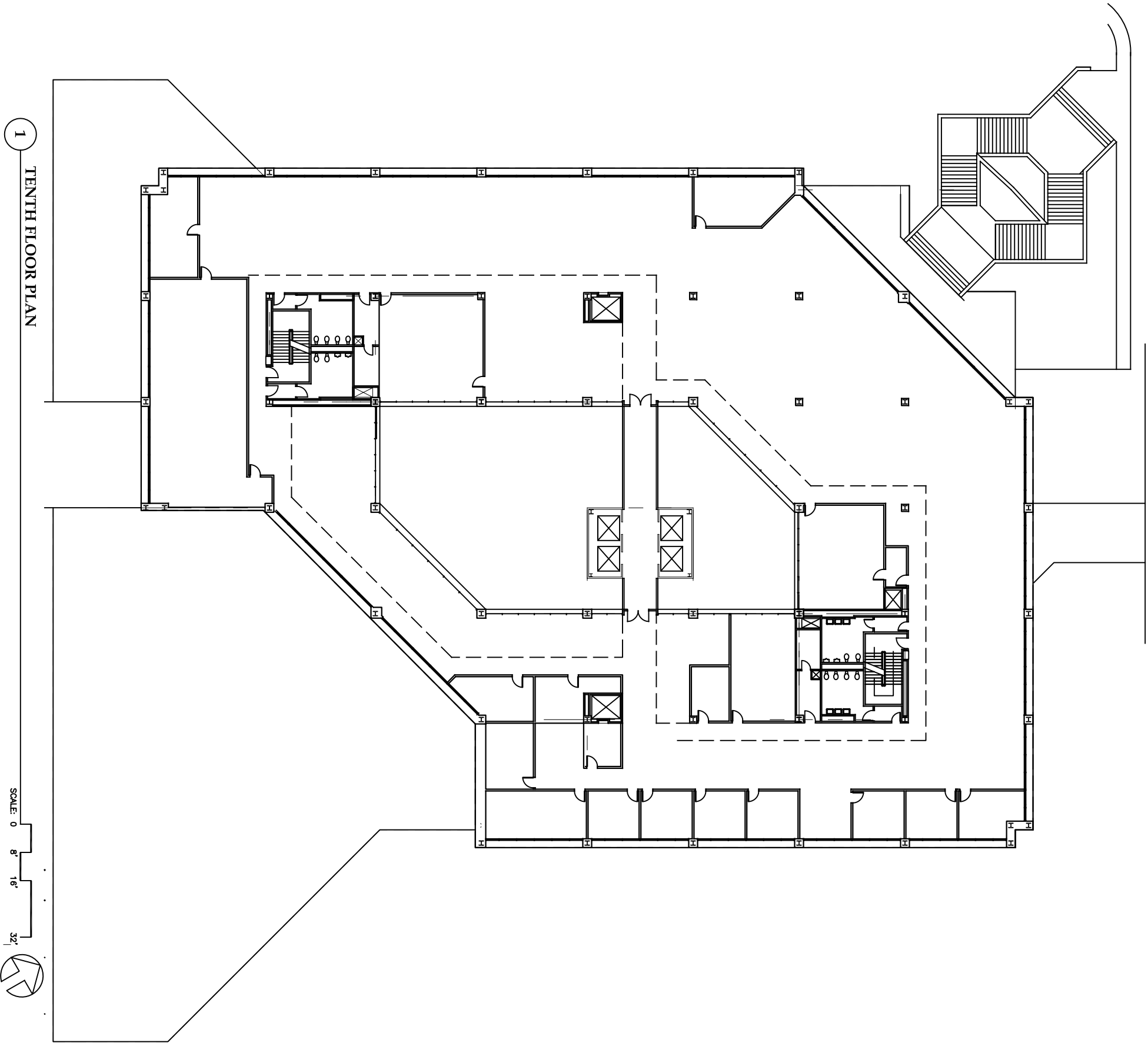




STATE OF ALASKA
DIVISION OF GENERAL SERVICES
AS BUILT DRAWINGS
JUNEAU, ALASKA

SHEET TITLE
STATE
OFFICE BLDG
NINTH FLOOR
PLAN
DATE: NOVEMBER 2010
FILE: 10079

A209



STATE OF ALASKA
DIVISION OF GENERAL SERVICES
AS BUILT DRAWINGS
JUNEAU, ALASKA

SHEET TITLE
STATE
OFFICE BLDG
TENTH FLOOR
PLAN
DATE: NOVEMBER 2010
FILE: 10079

A210

STATE OF ALASKA
DIVISION OF GENERAL SERVICES
AS BUILT DRAWINGS
JUNEAU, ALASKA

SHEET TITLE
STATE
OFFICE BLDG
ELEVENTH FLOOR
PLAN
DATE: NOVEMBER 2010
FILE: 10079

A211

