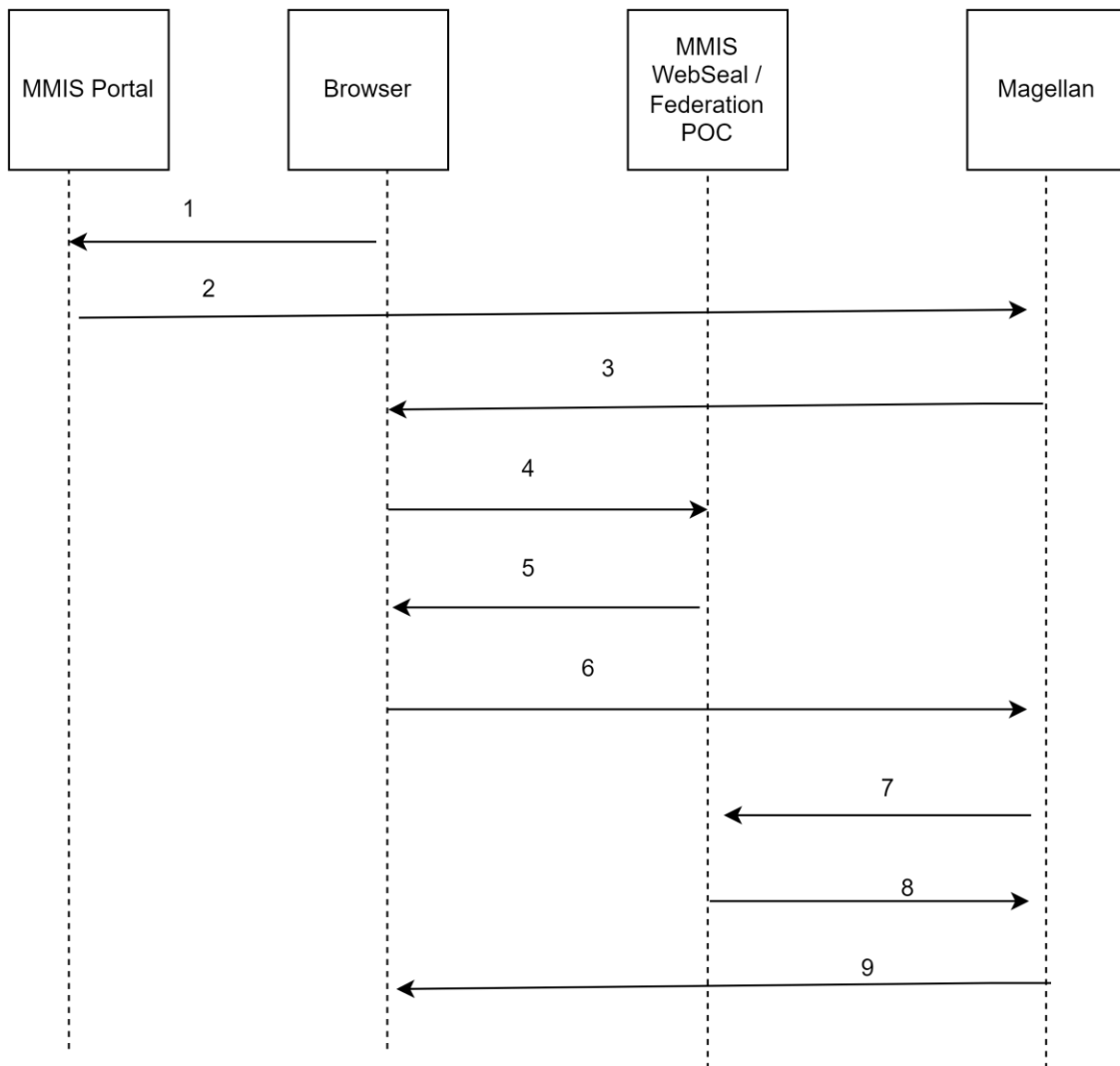


1.1.1 OIDC Flow



1. MMIS Enterprise portal generates HTML link as a menu item. The URL points to Magellan link
2. User clicks on Magellan link
3. Requests redirect to MMIS Identity Provider
4. MMIS Federation runtime sends authentication code to MMIS Webseal
5. MMIS Webseal sends authentication code to the client browser
6. Browser sends authentication code to Magellan
7. Magellan sends authentication code to MMIS Federation runtime to get access token
8. Access token shared with Magellan with logged in user details
9. Magellan login page will be displayed