

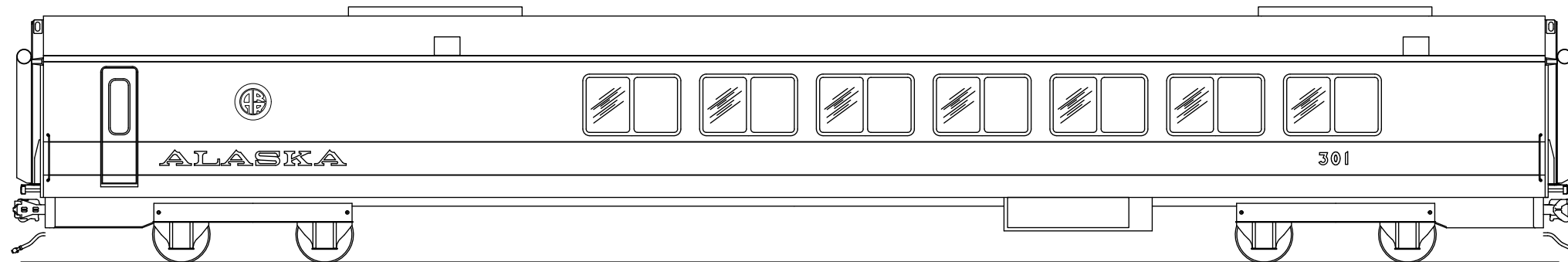


**ALASKA RAILROAD CORPORATION**  
**ENGINEERING SERVICES**  
 P.O. BOX 107500, ANCHORAGE, ALASKA 99510-7500

# MOTIVE POWER & EQUIPMENT


## ARR 301 CAFE GALLEY & SERVER STATION REFURB

MARCH 2023



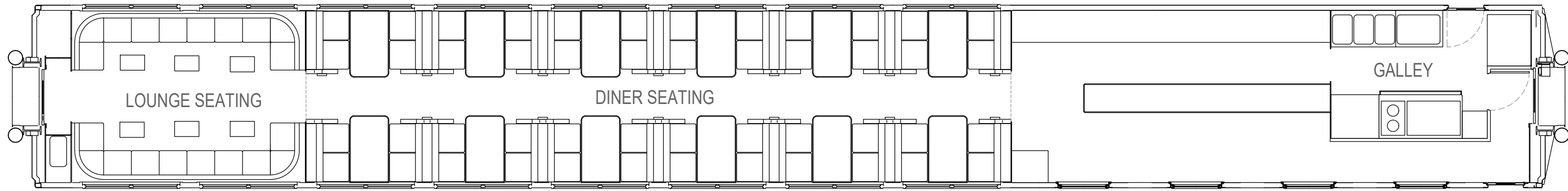
### INDEX OF DRAWINGS

<b>SHEET</b>	<b>TITLE</b>
<b>1</b>	<b>TITLE SHEET &amp; INDEX</b>
<b>2</b>	<b>EXISTING &amp; REPLACEMENT ARRANGEMENT</b>
<b>3</b>	<b>A-END SERVER STATION PLAN &amp; ELEVATIONS</b>
<b>4</b>	<b>B-END GALLEY PLAN &amp; RIGHT ELEVATION</b>
<b>5</b>	<b>B-END GALLEY PLAN &amp; LEFT ELEVATION</b>
<b>6</b>	<b>EQUIPMENT BOM</b>

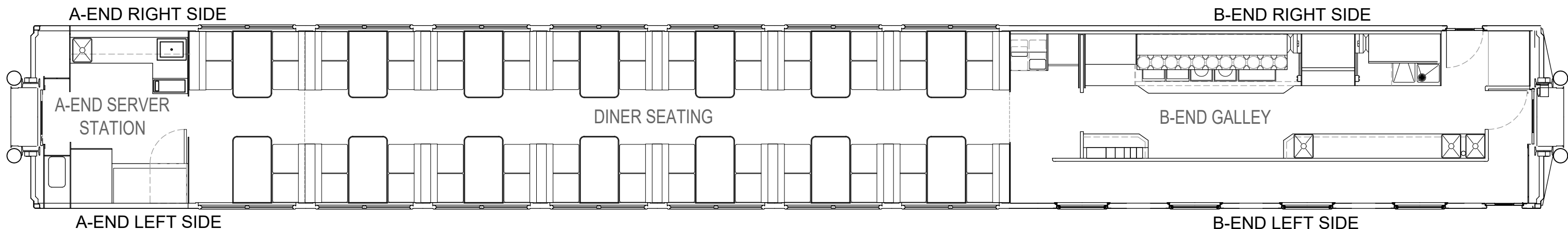
 <b>ALASKA RAILROAD CORPORATION</b> ENGINEERING SERVICES P.O. BOX 107500, ANCHORAGE, ALASKA 99510-7500		
PROJECT : <b>MOTIVE POWER &amp; EQUIPMENT ARR 301 CAFE REFURBISHMENT</b>		
TITLE: <b>TITLE SHEET &amp; INDEX</b>		
DESIGNED BY: ARRC	SCALE : NTS	AFE NO.: 11070
DRAWN BY: CDL	DATE : MARCH 2023	ACAD FILE:
CHECKED BY: ARRC		DWG NO.
APPROVED BY: ARRC		<b>1</b> OF <b>6</b>

REV.	DATE	BY	REVISION

P:\Engineering\Motive Power and Equipment\2. Passenger\ARR 301, 401\ARR 301 Rebuild\ARR 301 Rebuild.dwg VPort: 02 GENERAL ARRANGEMENTS Plot Style: 750C-Half.ctb

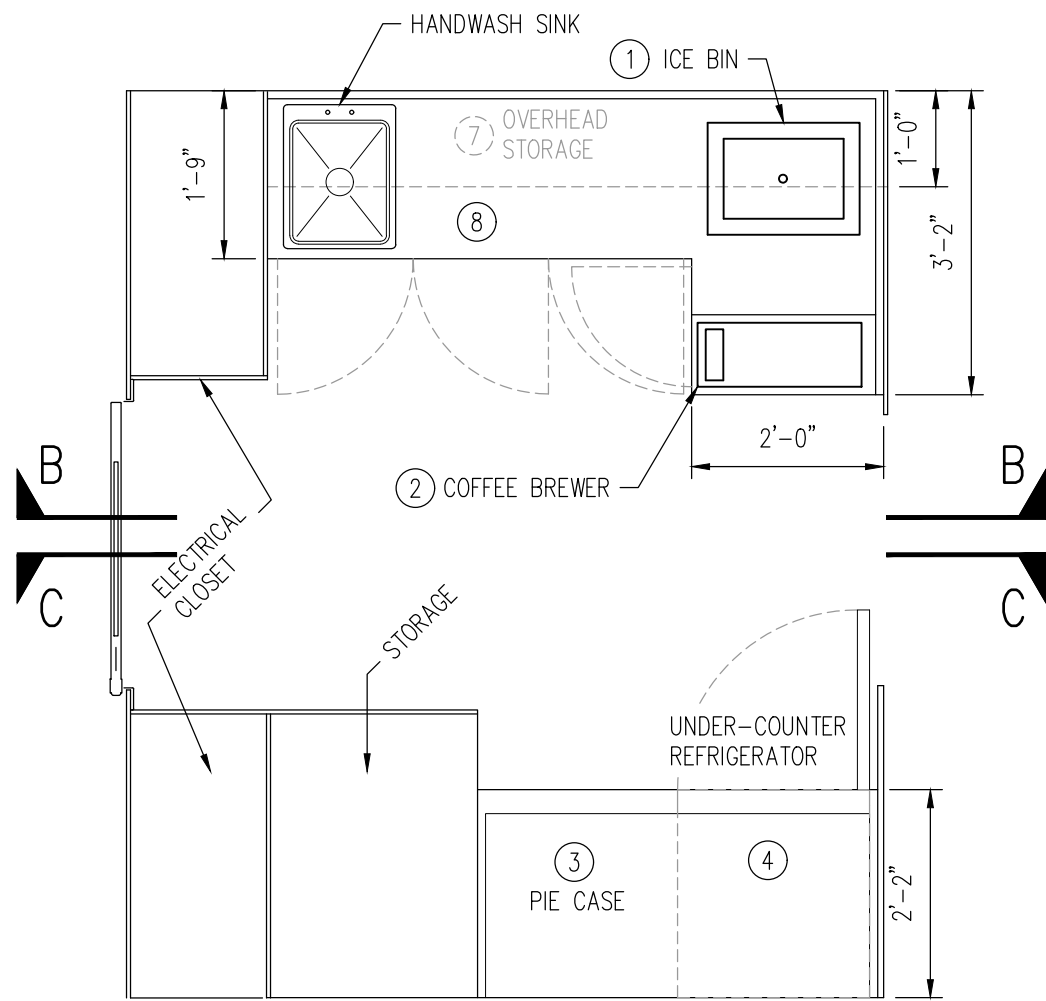


A  
2
ARR 301 EXISTING ARRANGEMENT  
PLAN VIEW

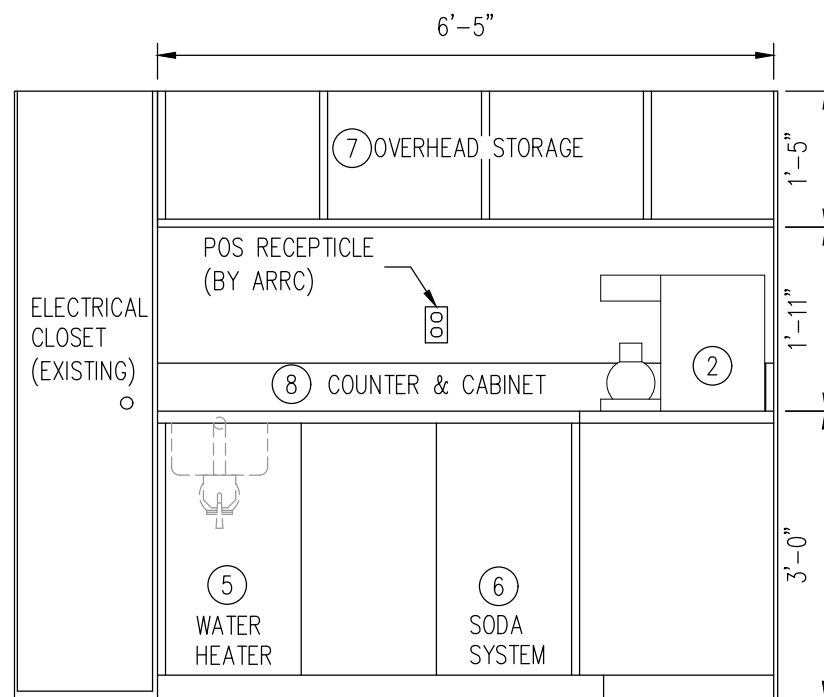


B  
2
ARR 301 REPLACEMENT ARRANGEMENT  
PLAN VIEW

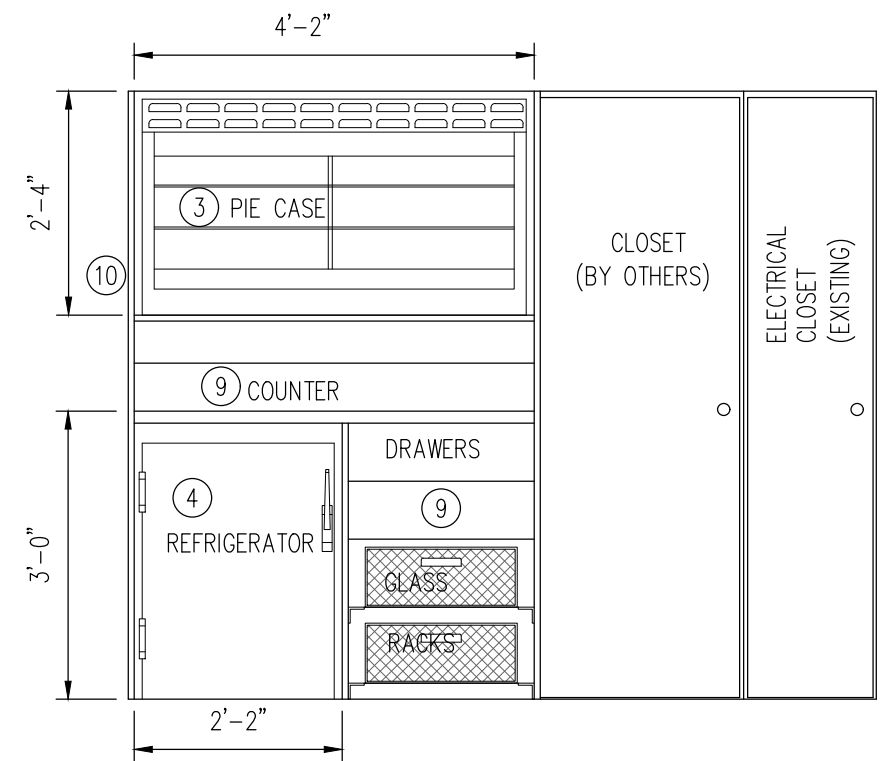
<b>ALASKA RAILROAD CORPORATION</b> ENGINEERING SERVICES <small>P.O. BOX 107500, ANCHORAGE, ALASKA 99510-7500</small>		
PROJECT : <b>MOTIVE POWER &amp; EQUIPMENT ARR 301 CAFE REFURBISHMENT</b>		
TITLE: <b>GENERAL ARRANGEMENT EXISTING &amp; REPLACEMENT</b>		
DESIGNED BY: ARRC	SCALE : N.T.S.	AFE NO.: 11070
DRAWN BY: CDL	DATE : MARCH 2023	ACAD FILE:
CHECKED BY: ARRC		DWG NO.
APPROVED BY: ARRC		<b>2</b> OF <b>6</b>




**A**  
2  
**A END FLOOR PLAN**  
SCALE: NTS



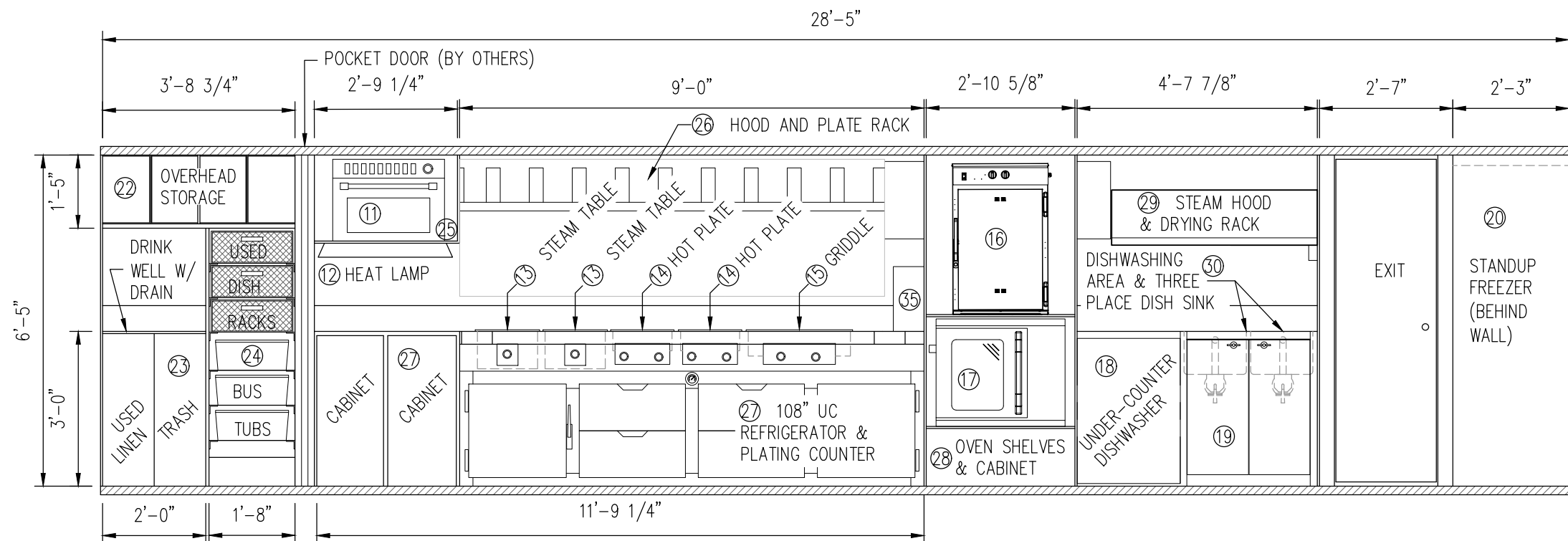
**B**  
2  
**A END ELEVATION - RIGHT SIDE VIEW**  
SCALE: NTS



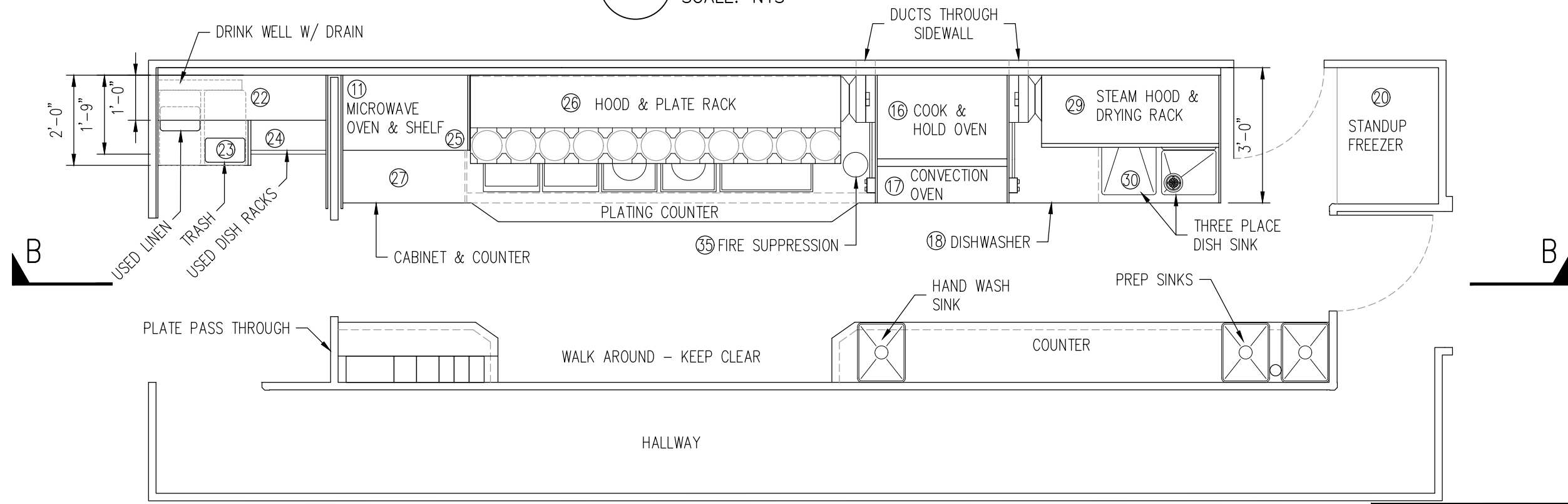
**C**  
2  
**A END ELEVATION - LEFT SIDE VIEW**  
SCALE: NTS

 <b>ALASKA RAILROAD CORPORATION</b> ENGINEERING SERVICES P.O. BOX 107500, ANCHORAGE, ALASKA 99510-7500		
PROJECT : <b>MOTIVE POWER &amp; EQUIPMENT ARR 301 CAFE REFURBISHMENT</b>		
TITLE: <b>A-END SERVER STATION PLAN AND ELEVATIONS</b>		
DESIGNED BY: ARRC	SCALE : N.T.S.	AFE NO.: 11070
DRAWN BY: CDL	DATE : MARCH 2023	ACAD FILE: DWG NO.
CHECKED BY: ARRC		<b>3</b> OF <b>6</b>
APPROVED BY: ARRC		


P:\Engineering\Motive Power and Equipment\2. Passenger\ARR 301, 401\ARR 301 Rebuild\ARR 301 Rebuild.dwg VPort: 04 B-END-RIGHT Plot Style: 750C-Half.ctb



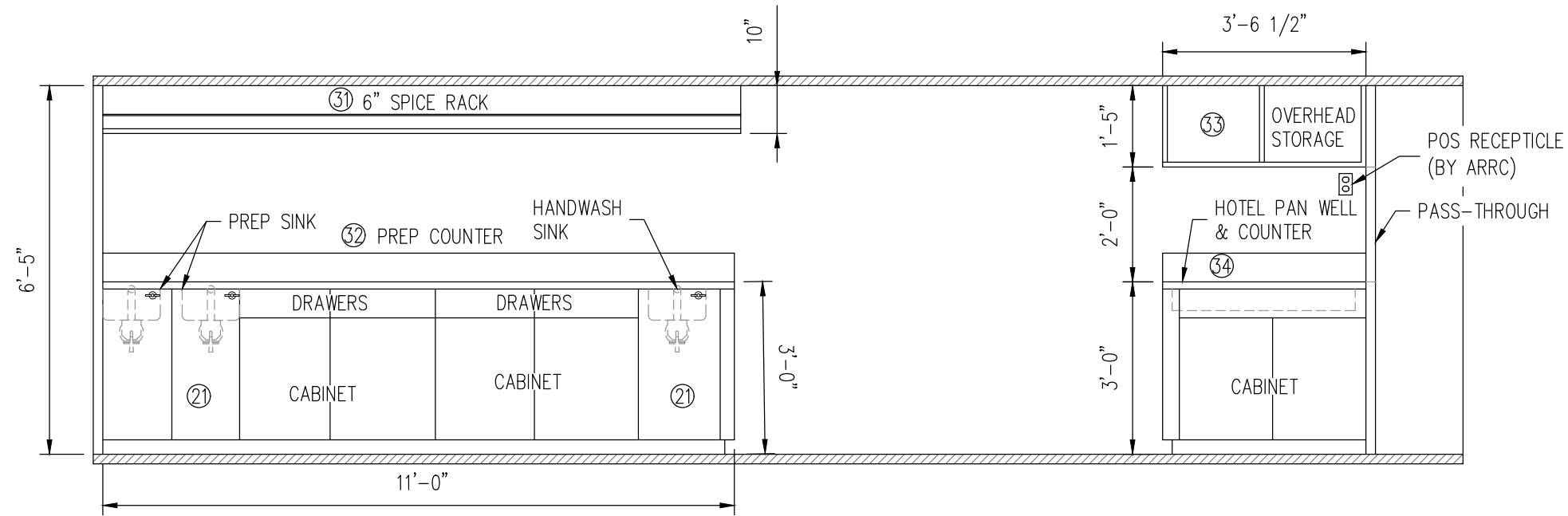
**B**  
3  
**B END ELEVATION - RIGHT SIDE**  
SCALE: NTS



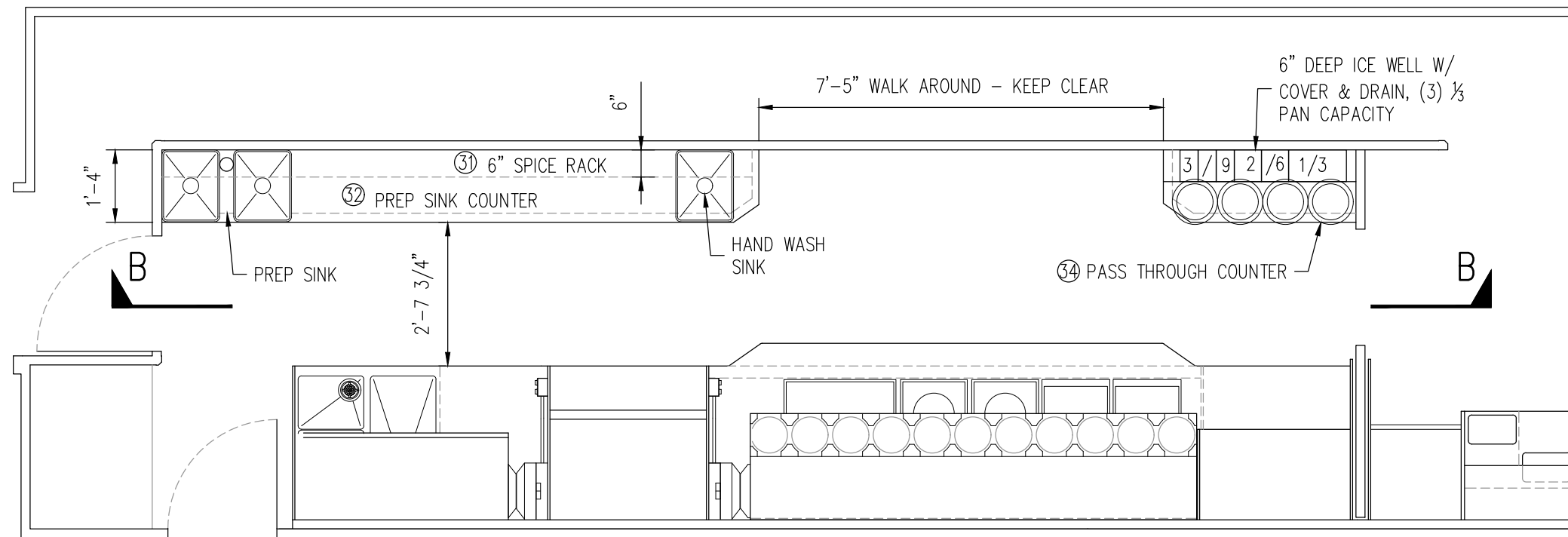
**A**  
3  
**B END FLOOR PLAN**  
SCALE: NTS

 <b>ALASKA RAILROAD CORPORATION</b> ENGINEERING SERVICES P.O. BOX 107500, ANCHORAGE, ALASKA 99510-7500		
PROJECT : <b>MOTIVE POWER &amp; EQUIPMENT ARR 301 CAFE REFURBISHMENT</b>		
TITLE: <b>B-END GALLEY PLAN &amp; RIGHT ELEVATION</b>		
DESIGNED BY: ARRC	SCALE : N.T.S.	AFE NO.: 11070
DRAWN BY: CDL	DATE : MARCH 2023	ACAD FILE: DWG NO.
CHECKED BY: ARRC		<b>3</b> OF <b>6</b>
APPROVED BY: ARRC		

P:\Engineering\Motive Power and Equipment\2. Passenger\ARR 301, 401\ARR 301 Rebuild\ARR 301 Rebuild.dwg VPort: 05 B-END-LEFT Plot Style: 7500-Half.ctb



**B**  
4  
**B END ELEVATION - LEFT SIDE**  
SCALE: NTS



**A**  
4  
**B END FLOOR PLAN**  
SCALE: NTS

<b>ALASKA RAILROAD CORPORATION</b> ENGINEERING SERVICES P.O. BOX 107500, ANCHORAGE, ALASKA 99510-7500		
PROJECT : <b>MOTIVE POWER &amp; EQUIPMENT ARR 301 CAFE REFURBISHMENT</b>		
TITLE: <b>B-END GALLEY PLAN &amp; LEFT ELEVATION</b>		
DESIGNED BY: ARRC	SCALE : N.T.S.	AFE NO.: 11070
DRAWN BY: CDL	DATE : MARCH 2023	ACAD FILE:
CHECKED BY: ARRC		DWG NO.
APPROVED BY: ARRC		<b>5</b> OF <b>6</b>

P:\Engineering\Motive Power and Equipment\2. Passenger\ARR 301, 401\ARR 301 Rebuild\ARR 301 Rebuild.dwg VPort: 06 BOM & NOTES Plot Style: 750C-Half.ctb


ITEM NO.	COMPONENT	OEM	MODEL / SPECIFICATION	ELECTRICAL	Qty
<b>A-End Server Station Equipment</b>					
1	DROP-IN ICE BIN	REGENCY	18"x12"	NA	1
2	COFFEE BREWER	BUNN	CWTF15-1	120V/60/1-PH, 12.3 Amps	1
3	REFRIGERATED DISPLAY CASE (PIE CASE)	AVANTCO	BCS-48-HC	110V/60/1-PH, 3.9 Amps	1
4	UNDER-COUNTER BAR REFRIGERATOR	TRUE	TUC-24-HC	115V/60/1-PH, 2.0 Amps	1
5	INSTANT WATER HEATER	BOSCH	TRONIC US12	208V/60/1-PH, 50 Amps	1
6	SODA CARBONATION SYSTEM	MCCANN'S	BIG MAC FASTFLOW E400397	115V/60/1-PH, 6.5 Amps	1
<b>A-End Server Station Fabricated Equipment</b>					
7	RIGHT SIDE OVERHEAD STORAGE	FABRICATED	18 GA 304 SS, 77"x12"	NA	1
8	RIGHT SIDE CABINET & 'L' COUNTER WITH SINK	FABRICATED	14 GA TOP, 18 GA BODY 304 SS	NA	1
9	LEFT SIDE CABINET & COUNTER	FABRICATED	14 GA TOP, 18 GA BODY 304 SS	NA	1
10	LEFT SIDE PIE CASE SHELF	FABRICATED	14 GA 304 SS	NA	1
<b>B-End Galley Equipment</b>					
11	MICROWAVE OVEN / STEAMER	PANASONIC	NE-2180	208V/60/1-PH, 20 Amps	1
12	HEAT LAMP	HATCO	GRA-30	120V/60/1-PH, 3.8 Amps	1
13	STEAM TABLE	WELLS	HSW-6D	208v/60/1-ph, 3.0 Amps	2
14	HOT PLATE	WELLS	H-706	208v/60/3-ph, 14.5 Amps	2
15	GRIDDLE	WELLS	G-136	480v/60/3-ph, 35 Amps	1
16	COOK AND HOLD OVEN	ALTO SHAAM	1000-TH/II	208v/60/1-ph, 14.5 Amps	1
17	CONVECTION OVEN	HOBART	HEC 20-208V	208v/60/1-ph, 26 Amps	1
18	DISHWASHER, UNDERCOUNTER	JACKSON	WWS DISHSTAR HT	208v/60/1-ph, 37.2 Amps	1
19	WATER BOOSTER HEATER	HUBBELL	J1636T4	480v/60/3-ph, 43 Amps	1
20	STANDUP FREEZER	TRUE MFG.	T-19F-HC	115v/60/1-ph, 3.7 Amps	1
21	INSTANT WATER HEATER	BOSCH	TRONIC US12	208v/60/1-ph, 50.0 Amps	2
<b>B-End Galley Fabricated Equipment</b>					
22	BUS STATION OVERHEAD STORAGE	FABRICATED	18 GA 304 SS, 44-3/4"x12"	NA	1
23	BUS STATION LINEN/TRASH CABINET W/ DRINK-WELL & DRAIN	FABRICATED	18 GA 304 SS, 24"x24"	NA	1
24	BUS STATION DISH/ BUS TUB RACK, 6 SHELF	FABRICATED	16 GA 304 SS, 20"x21"x60"	NA	1
25	MICROWAVE SHELF	FABRICATED	16 GA 304 SS, 33"x24"	NA	1
26	COOKING EXHAUST HOOD AND PLATE RACK, 9-1/8" ID FAN INLET	FABRICATED	16 GA 304 SS, 108"x22"	NA	1
27	108" UNDER COUNTER REFRIGERATOR, PLATING COUNTER & CABINET	FABRICATED	14 GA 304 SS TOP, 144"x42", INCLUDING CONDENSING UNIT	120V/60/1-ph, <10 Amps	1
28	OVEN SHELVES & REFRIGERATOR CONDENSOR CABINET	FABRICATED	14 GA 304 SS, 34-5/8"x 34"	NA	1
29	STEAM HOOD AND DRYING RACK	FABRICATED	16 GA 304 SS, 48"x21", SLANTED	NA	1
30	DISHWASHING AREA	FABRICATED	14 GA 304 SS TOP, 55-7/8"x36"	NA	1
31	6" SPICE RACK	FABRICATED	16 GA 304 SS, 132"x6"	NA	1
32	PREP SINK COUNTER WITH SINKS (2 PREP, ONE HANDWASH)	FABRICATED	14 GA 304 SS TOP, 132"x16"	NA	1
33	PASS THROUGH OVERHEAD STORAGE	FABRICATED	16 GA 304 SS, 54"x6"	NA	1
34	PASS THROUGH COUNTER & CABINET WITH ICE PAN	FABRICATED	14 GA 304 SS TOP, 42"x16"	NA	1
<b>B-End Galley Fire Suppression Equipment</b>					
35	FIRE SUPPRESSION SYSTEM	OEM	UL STANDARD 300 LISTED SYSTEM	NA	1
<b>FAUCETS</b>					
36	A-END HANDWASH FAUCET	T&S BRASS	5F-4CWX08	NA	1
37	B-END DISH SINK FAUCET	T&S BRASS	B-0175-05 PRE-RINSE WITH INLET KIT	NA	1
38	B-END PREP SINK FAUCET	T&S BRASS	5F-4CWX05	NA	1
39	B-END HANDWASH SINK FAUCET	T&S BRASS	5F-4CWX08	NA	1

**\*OVERALL DIMENSIONS OF FABRICATED EQUIPMENT ARE FOR REFERENCE ONLY AND REPORTED AS WxD OR WxDxH**

**\*MAXIMUM CARBODY OPENING DIMENSIONS ARE 38"x60" - ALL EQUIPMENT MUST BE ABLE TO FIT THROUGH THIS DIMENSION**

NOTES:

1. FABRICATE ALL CUSTOM GALLEY ITEMS AS BELOW UNLESS OTHERWISE SPECIFIED:
  - 1.1. MATERIAL: 304 STAINLESS STEEL
    - 1.1.1. TOP: 14GA S/S
    - 1.1.2. BODY: 18GA S/S
    - 1.1.3. OVERSHELF: 16GA S/S
    - 1.1.4. CABINET SHELF: 16GA S/S
    - 1.1.5. CABINET DOOR: 18GA S/S
  - 1.2. UNDERBRACING
    - 1.2.1. U CHANNEL GALV 1"x4"
  - 1.3. BODY SEAMS
    - 1.3.1. BUTT JOINTS
  - 1.4. POLISHING
    - 1.4.1. #4 POLISH, BLEND TO MILL FINISH
    - 1.4.2. CHG UNDERCOATING
2. GALLEY EQUIPMENT TO BE DESIGNED AND SHIPPED TO ARRC AS STAND-ALONE UNITS FOR INSTALLATION BY FOODSERVICE EQUIPMENT CONTRACTOR.
3. WALLS, PARTITIONS, FLOORS, CEILINGS, ELECTRICAL AND PLUMBING BY ARRC.
4. FABRICATE, PURCHASE AND INSTALL EQUIPMENT PER ITB DOCUMENTS AND TECHNICAL SPECS FOUND IN SECTION 11 40 00.

 <b>ALASKA RAILROAD CORPORATION</b> ENGINEERING SERVICES P.O. BOX 107500, ANCHORAGE, ALASKA 99510-7500		
PROJECT :		
<b>MOTIVE POWER &amp; EQUIPMENT ARR 301 CAFE REFURBISHMENT</b>		
TITLE:		
<b>EQUIPMENT BOM &amp; NOTES</b>		
DESIGNED BY: ARRC	SCALE : N.T.S.	AFE NO.: 11070
DRAWN BY: CDL		ACAD FILE:
CHECKED BY: ARRC	DATE : MARCH 2023	DWG NO.
APPROVED BY: ARRC		<b>6</b> OF <b>6</b>