

STATE OF ALASKA

Department of Public Safety
Division of Administrative Services



Spiewak Jackets and Snow Pants

ITB 2023-1200-0115

Amendment # 2

January 12, 2022

This amendment is being issued to provide an update to Section 2.09 Scope of Work and Specifications and provide an updated Attachment 1 – Bid Schedule.

Important Note to Offerors: You must sign and return this page of the amendment document with your proposal. Failure to do so may result in the rejection of your proposal. Only the ITB terms and conditions referenced in this amendment are being changed. All other terms and conditions of the ITB remain the same.

Jason Monkelien
Procurement Specialist II
Phone: (907) 269-5582
Email: jason.monkelien@alaska.gov

COMPANY SUBMITTING PROPOSAL

AUTHORIZED SIGNATURE

DATE

Changes to the ITB:

Change 1: Remove Sec 2.10 Scope of Work & Specification details and replace with the following:

The contractor shall provide Spiewak manufactured reversable jacket, outer shell jacket, softshell jacket, and snow pants with the following manufacturer number in the sizes listed on Attachment One – Bid Schedule on an as-needed basis.

- Spiewak Reversable Jacket, Manufacturer Number S318ZXV, Dark Navy/Hi-Vis Yellow, Size: Small – 4XL
- Spiewak Outer Shell Jacket, Manufacturer Number SH3466, Dark Navy, Size: Small – 4XL
- Spiewak Softshell Jacket, Manufacturer Number S318ZX, Dark Navy, Size: Small – 4XL
- Spiewak Outer Snow Pants, Manufacturer Number S1785, Dark Navy, Size: Small – 4XL

The Dark Navy side of each Spiewak Reversable Jacket (S318ZXV) shall have the State-approved shoulder patch added to the left arm 1 inch down from the shoulder stitching and a State-approved chest patch on the left chest on the Dark Navy side of the Reversable Jacket (S318ZXV). Patches shall be provided to the awarded contractor by the State. (*Figure 1*)



Figure 1

The High Visibility side of each Spiewak Reversable Jacket (S318ZXV) shall have a black heat transferred copy of the State-approved shoulder patch copied to the left arm 1 inch down from the shoulder stitching and a black heat transferred copy of the State-approved chest patch added to the left chest. The high visibility side of the reversable jacket shall have, in reflective black lettering, STATE TROOPER heat transferred to the back of the jacket. (*Figure 2*)



Figure 2

Both the Spiewak Outer Shell Jacket (SH3466) and Spiewak Softshell Jacket (S318ZX) shall have a Velcro loop portion cut to 5 ½ inches circle shoulder patch added to the left arm 1 inch down from the shoulder stitch and a Velcro loop portion cut to 4 inches long and 3 1/8-inch-wide oval chest patch added to the left chest; State-approved patches shall be Velcroed onto Outer Shell Jacket after delivery. (Figure 3)

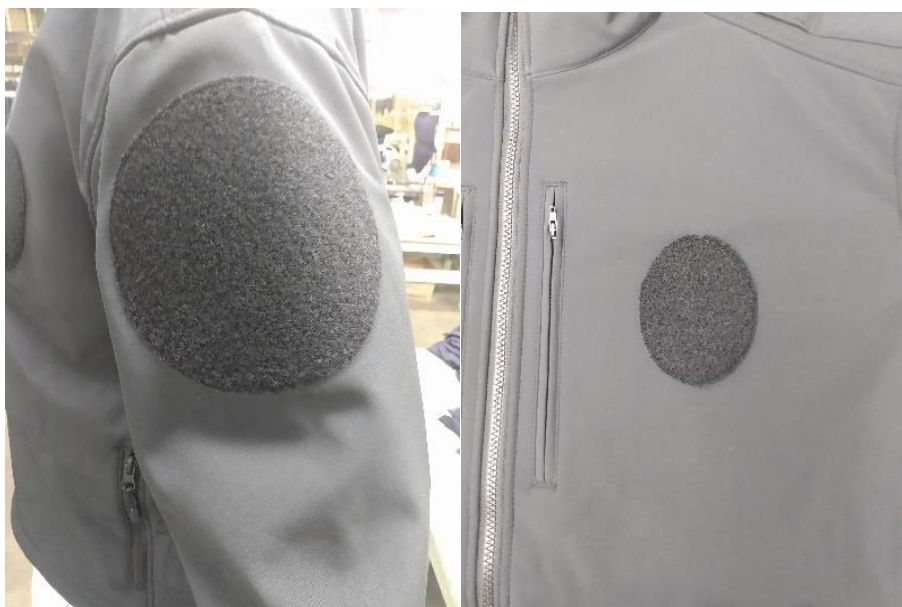


Figure 3*Above picture is of another jacket type, photo used as example of placement and shape.

Addition of Velcro, Patches, and Heat Transfer copy of patches shall be done by the manufacturer.

Orders under 200 units shall be pulled from Spiewak stock and embellishments will be added post-manufacture. Orders over 200 units shall have embellishments added during manufacture.

Change 3: Bidders shall use the updated Attachment 1 – Bid Schedule – Revision 1 in order to be considered responsive.
