

ARCHITECTURAL SPECIFICATIONS:

DIVISION 06 - WOODS AND PLASTICS:

064023 INTERIOR ARCHITECTURAL WOODWORK

- PLASTIC-LAMINATE-FACED ARCHITECTURAL CABINETS
  - A. QUALITY STANDARD: UNLESS OTHERWISE INDICATED, COMPLY WITH THE "ARCHITECTURAL WOODWORK STANDARDS" FOR GRADES OF ARCHITECTURAL PLASTIC-LAMINATE CABINETS INDICATED FOR CONSTRUCTION, FINISHES, INSTALLATION, AND OTHER REQUIREMENTS.
  - B. GRADE: PREMIUM
  - C. TYPE OF CONSTRUCTION: FRAMELESS
  - D. CABINET, DOOR, AND DRAWER FRONT INTERFACE STYLE: FLUSH OVERLAY
  - E. REVEAL DIMENSION: 1/2 INCH
  - F. HIGH-PRESSURE DECORATIVE LAMINATE: NEMA LD 3, GRADES AS INDICATED OR IF NOT INDICATED, AS REQUIRED BY WOODWORK QUALITY STANDARD.
  - G. LAMINATE CLADDING FOR EXPOSED SURFACES
    - 1. HORIZONTAL SURFACES: GRADE HGS
    - 2. VERTICAL SURFACES: GRADE HGS
    - 3. EDGES: GRADE HGS, PVC EDGE BANDING, 0.12 INCH THICK, MATCHING LAMINATE IN COLOR,PATTERN, AND FINISH.
  - H. MATERIALS FOR SEMIEXPOSED SURFACES:
    - 1. 1. SURFACES INCLUSIVE OF DRAWER BODIES: HIGH-PRESSURE DECORATIVE LAMINATE, NEMA LD 3, GRADE VGS
      - a. EDGES OF PLASTIC-LAMINATE SHELVES: PVC EDGE BANDING, 0.12 INCH THICK, MATCHING LAMINATE IN COLOR, PATTERN, AND FINISH.
    - 2. FOR SEMIEXPOSED BACKS OF PANELS WITH EXPOSED PLASTIC-LAMINATE SURFACES, PROVIDE SURFACE OF HIGH-PRESSURE DECORATIVE LAMINATE, NEMA LD 3, GRADE VGS
- WOOD MATERIALS
  - A. ALL SHELVES TO BE 3/4" PLYWOOD CORE.

- PLASTIC LAMINATE MATERIALS
  - A. MANUFACTURERS:
    - 1. BASIS OF DESIGN: FORMICA
  - B. GRADE:
    - 1. HGS OR VGS AS INDICATED UNDER ARTICLES 2.1.G AND H OF THIS SECTION.
  - C. MATERIAL SPECIFIC FABRICATION AND INSTALLATION REQUIREMENTS
    - 1. PLASTIC LAMINATE FIELD SEAMS NOT PERMITTED.
  - D. COLORS:
    - 1. TO BE SELECTED BY ARCHITECT FROM MANUFACTURES FULL RANGE OF COLORS.
- SOLID SURFACE MATERIALS
  - A. MANUFACTURERS:
    - 1. BASIS OF DESIGN: CORIAN
  - B. MATERIAL SPECIFIC FABRICATION AND INSTALLATION REQUIREMENTS:
    - 1. THICKNESS: 1.5" TOTAL AT VISIBLE EDGE. .5" MIN INDIVIDUAL LAYER.
    - 2. SUBSTRATE: 3/4" PLYWOOD OR APPROVED SUPPORT FROM COUNTERTOP MANUFACTURER.
    - 3. BACK AND END SPLASHES: LOCATION AND SIZE AS INDICATED IN DRAWINGS. SAME MATERIAL, STRAIGHT JOINT, SQUARE TOP EDGE.
    - 4. EXPOSED EDGES: 1/16" RADIUS.
    - 5. JOINTS WITH ADJOINING MATERIAL: SEALED WITH COLOR MATCHED SEALANT.
  - C. COLORS:
    - a. TO BE SELECTED BY ARCHITECT FROM MANUFACTURES FULL RANGE OF COLORS.

DIVISION 08 - OPENINGS:

085200 WOOD WINDOWS

- WOOD WINDOWS:
  - A. LAMINATED GLASS:
    - 1. CLEAR
    - 2. 1/4"
    - 3. ACOUSTIC POLYVINYL BUTYRAL INTERLAYER

DIVISION 09 - FINISHES:

092900 GYPSUM BOARD

- 5/8" TYP X TYP.
  - A. PROVIDE METAL CORNER TRIMS AND J-MOLDINGS.
  - B. PROVIDE ALL DRYWALL MUDS AND TAPES, TEXTURES TO MATCH EXISTING. PAINT OUT AS REQUIRED TO BLEND WITH SURROUNDING.

096513 RESILIENT BASE AND ACCESSORIES

- FLOORING SPECIALTIES - RUBBER BASE:
  - A. MANUFACTURERS:
    - 1. BASIS OF DESIGN ROPPE, 4" BASE
  - B. COLOR:
    - a. TO BE COORDINATED WITH FLOORING SELECTION. RUBBER BASE INSTALL LOCATIONS AS NOTED ON PLANS, AND INTERIOR ELEVATIONS

096800 CARPETING

- COMMERCIAL CARPET:
  - 1. MANUFACTURERS:
    - A. BASIS OF DESIGN: MANNINGTON, DISPATCH TILE, HAPTICS, 24"X24"
  - B. COLOR:
    - a. TO BE SELECTED BY ARCHITECT

099123 INTERIOR PAINTING

- INTERIOR PAINTING
  - A. MANUFACTURES:
    - a. BASIS OF DESIGN BENJAMIN MOORE
      - SUPER SPEC PREP COTE HIGH BUILD LATEX INTERIOR PRIMER NUMBER 270-00 TO ALL NEW DRYWALL SURFACES.
      - REGEL SELECT, EGGSHELL FOR FINISH DRYWALL SURFACES
  - B. COLOR:
    - a. TO BE SELECTED BY ARCHITECT FROM MANUFACTURES FULL RANGE OF COLORS.

DIVISION 12 - FURNISHINGS:

122413 ROLLER WINDOW SHADES

- MANUFACTURER:
  - A. BASIS OF DESIGN: MECO SHADE
    - 1. ELECTROSHADE
      - a. MOTORIZED SHADES: COMPLY WITH NFPA 70
      - b. VOLTAGE: 120 VAC
      - c. SINGLE ROLLER
      - d. REGULAR ROLL
      - e. OUTSIDE MOUNTED
      - f. SIZE: AS INDICATED ON DRAWINGS
      - g. SOLAR SHADE, 1% OPEN, COLOR TO BE SELECTED BY ARCHITECT FROM MANUFACTURERS FULL RANGE.
    - h. FASCIA:
      - REMOVABLE EXTRUDED ALUMINUM FASCIA
      - FINISH: TO BE SELECTED BY ARCHITECT FROM MANUFACTUERERS FULL RANGE.

01



10/28/2022



126 Seward St  
Juneau, AK 99801  
Ph #907.586.6150  
www.northwindarch.com

← 1" ACTUAL →  
IF THE ABOVE DIMENSION DOES NOT MEASURE ONE INCH (1") EXACTLY, THIS DRAWING WILL HAVE BEEN ENLARGED OR REDUCED, AFFECTING ALL LABEL SCALES.

TYPICAL MOUNTING HEIGHTS - AS APPLICABLE

NOTE: ITEMS HERE PROVIDED FOR ELEVATION REFERENCE ONLY AND MAY NOT ALL BE INCLUDED IN THE WORK

GENERAL NOTES:

- 1. ALL GWB WALLS AND CEILINGS TO BE PNT-1, UNO.

GENERAL NOTES: MOUNTING HEIGHTS

- 1. MOUNT ITEMS AT THE HEIGHTS ABOVE FINISH FLOOR LEVELS AS SHOWN ON THE SHEET, UNLESS OTHERWISE NOTED ON INTERIOR ELEVATIONS OR OTHER DRAWINGS.
- 2. WHERE ITEMS ARE RECESSED INTO FIRE-RATED PARTITIONS, PROVIDE CONTINUOUS FIRE-RATED CONSTRUCTION BEHIND AND AROUND ITEMS.
- 3. BLOCKING OR BACKING AS REQUIRED FOR ALL WALL MOUNTED ITEMS.

MOUNTING HEIGHTS ABBREVIATIONS:

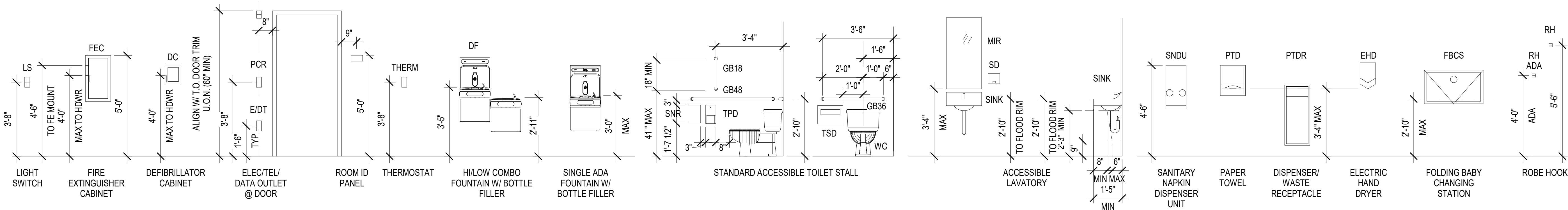
|        |   |
|--------|---|
| BCS    | BABY CHANGING STATION                   |
| BM     | BASE MOLDING                            |
| GB     | GRAB BAR                                |
| MIR    | MIRROR                                  |
| PTD    | PAPER TOWEL DISPENSER                   |
| PTD/WR | PAPER TOWEL DISPENSER/ WASTE RECEPTACLE |
| RB     | ROBE HOOK                               |
| SD     | SOAP DISPENSER                          |
| SNDU   | SANITARY NAPKIN DISPENSER UNIT          |
| SNR    | SANITARY NAPKIN RECEPTACLE              |
| TPD    | TOILET PAPER DISPENSER                  |
| TSD    | TOILET SEAT DISPENSER                   |
| UR     | URINAL                                  |
| WC     | WATER CLOSET                            |

TYPICAL TOILET STALLS

TYPICAL LAVATORY

TOILET ROOM ACCESSORIES

@ NorthWind Architects, LLC, Project Number: NWA-0000A



SHEET TITLE:  
**SHEET SPECIFICATIONS & MOUNTING HEIGHTS**  
CHECKED Approver  
DRAWN Author  
issue date description  
**01 11/10/2022**

SHEET #

**A0.1**

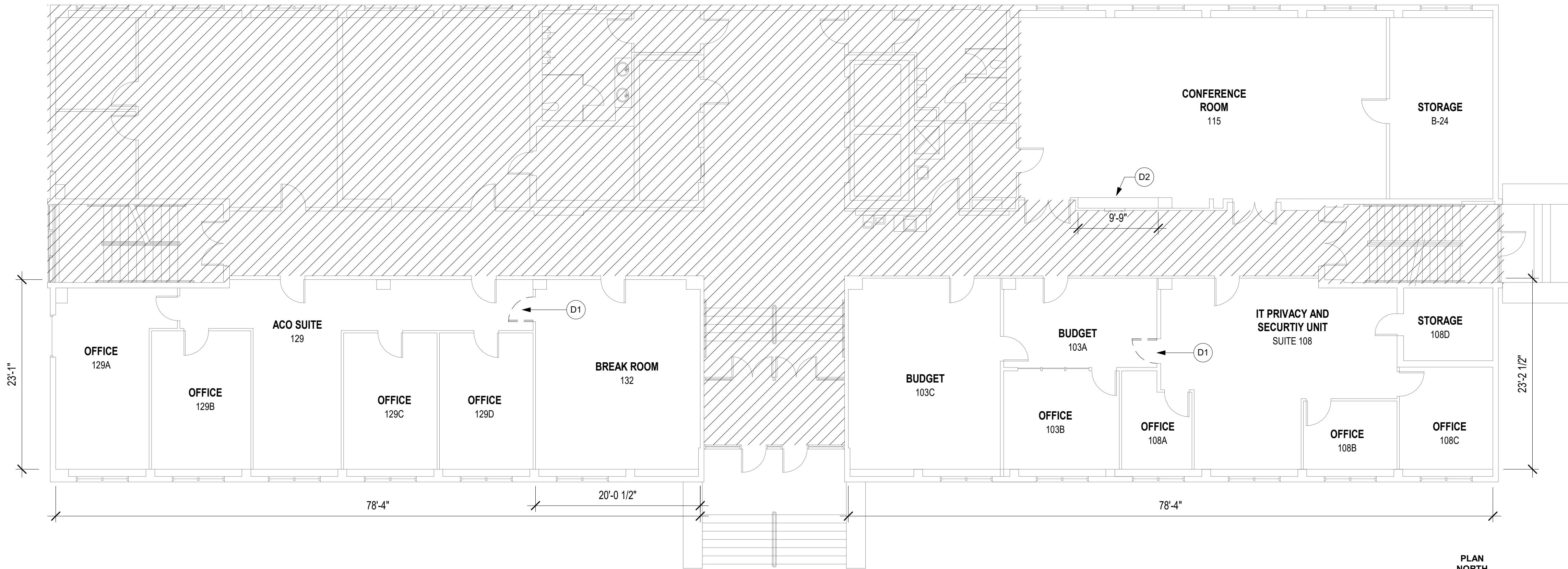
ISSUE DATE

10.28.2022

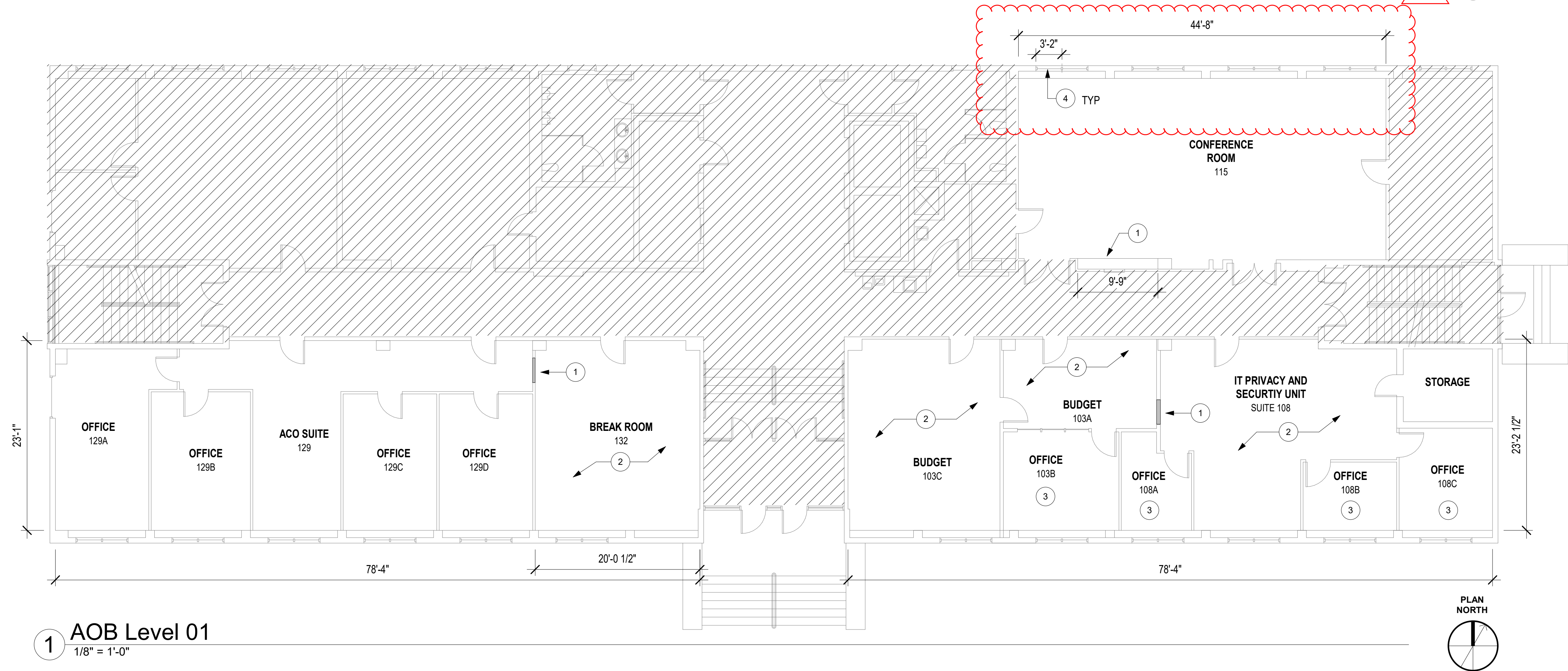
**DFCS/DOH OFFICE  
RENOVATIONS – ANC 23-23C**

STATE OF ALASKA DEPARTMENT OF HEALTH  
JUNEAU, ALASKA





2 DEMO - AOB Level 01  
1/8" = 1'-0"



1 AOB Level 01  
1/8" = 1'-0"

**GENERAL NOTES:**

1. CONTRACTOR SHALL FIELD VERIFY ACTUAL BUILDING CONDITIONS AND DIMENSIONS. WHERE DISCREPANCIES OR CONFLICTS ARE FOUND, NOTIFY ARCHITECT PRIOR TO COMMENCING WORK.
2. DO NOT SCALE OFF OF DRAWINGS.
3. DIMENSIONS ARE TO GRIDLINE, FACE OR CENTER OF FRAMING UNO.
4. STRUCTURAL ELEMENTS SHOWN IN ARCHITECTURAL DRAWINGS FOR REFERENCE ONLY. SEE STRUCTURAL DRAWINGS FOR ALL STRUCTURAL INFORMATION.
5. WHERE DOOR OPENINGS ARE NOT DIMENSIONED, LOCATE DOOR OPENINGS TO ENSURE 3" MIN JAMB FRAMING.
6. AOB LEVELS 1-6 CEILING HEIGHT: 10' 8"

**DEMO SHEET NOTES:**

- D1. DEMO DOOR, SALVAGE FOR OWNER
- D2. DEMO BUILT IN SHELVES

**SHEET NOTES:**

1. INFILL AND PAINT
2. PATCH AND PAINT DAMAGED SHEETROCK (2-3 SF OF PATCHING)
3. LIGHT PATCHING, NAIL HOLES ONLY
4. MOTORIZED SOLAR SHADES, ALIGN SHADES WITH CENTER OF WINDOW MULLIONS.



10/28/2022

NorthWind Architects, LLC

126 Seward St  
Juneau, AK 99801  
Ph #907.586.6150  
www.northwindarch.com

IF THE ABOVE DIMENSION DOES NOT MEASURE ONE INCH (1") EXACTLY, THIS DRAWING WILL HAVE BEEN ENLARGED OR REDUCED, AFFECTING ALL LABEL SCALES.

DFCS/DOH OFFICE  
RENOVATIONS - ANC 23-23C

STATE OF ALASKA DEPARTMENT OF HEALTH  
JUNEAU, ALASKA

**LEGEND:**

- (E) PARTITION
- (E) PARTITION TO BE DEMOLISHED
- (N) PARTITION
- (E) TO BE DEMOLISHED
- NOT IN SCOPE

SHEET TITLE:  
FLOOR PLAN - AOB  
LEVEL 01

CHECKED Approver  
DRAWN Author

issue date description  
01 11/10/2022

SHEET # A2.1

ISSUE DATE 10.28.2022