

Appendix II

Site Drawings to Accompany SRCE Model

Anarraaq and Aktigiruaq Exploration Program

Phase I – Exploration Access Road and Surface Pad Construction

Prepared for:

Alaska Department of Natural Resources
Alaska Department of Environmental Conservation
Northwest Arctic Borough

Teck

Prepared by:

Teck American Incorporated
501 N Riverpoint Blvd., Suite 300
Spokane, WA 99202

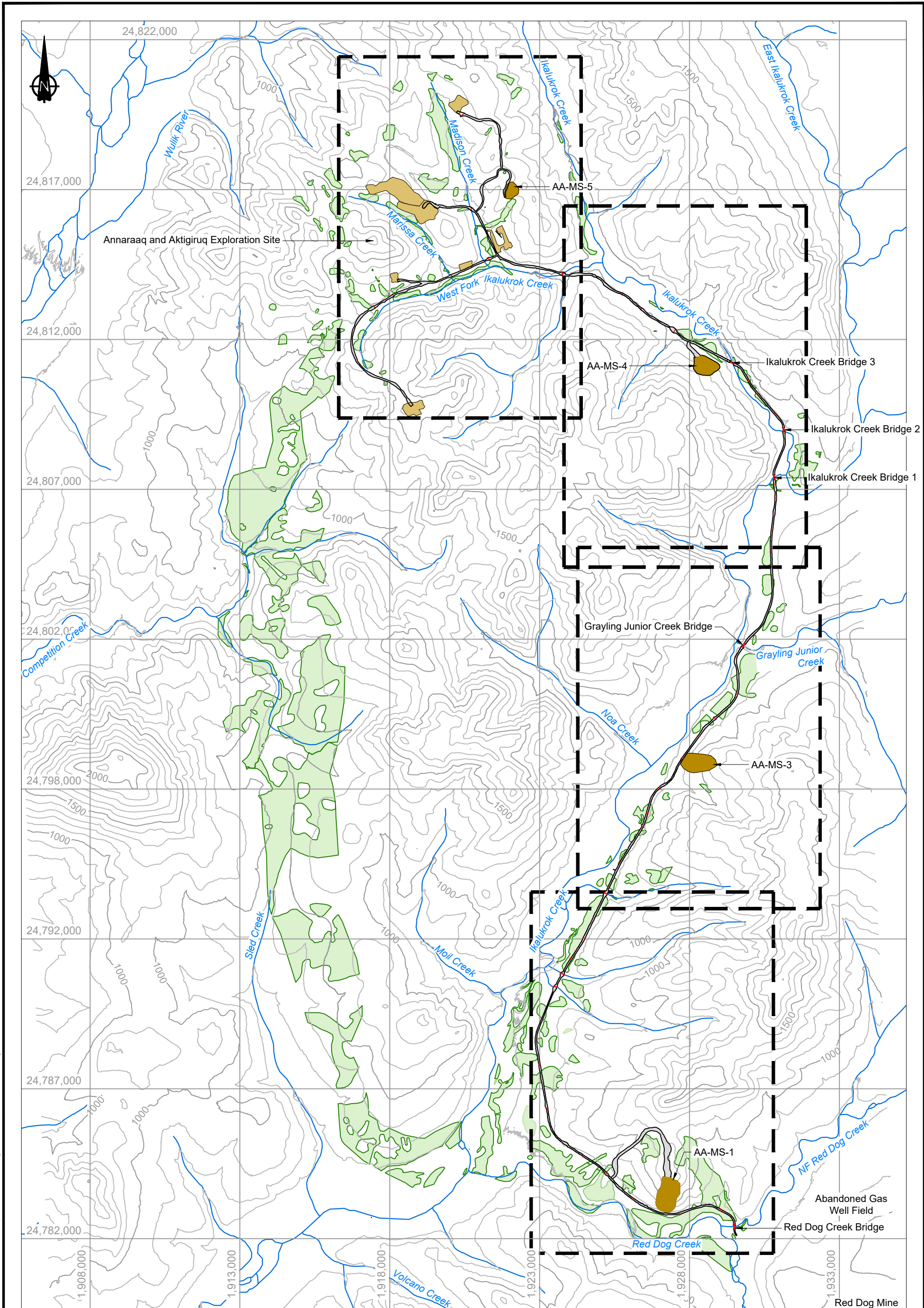
October 2022

This document originally dated April 2022, and submitted to ADNR on May 9, 2022, has been modified to include updated designs for access roads to material sites AA-MS-1 and AA-MS-4. The figures in this appendix support the SRCE model for Reclamation Costs reclamation of the exploration access roads, secondary roads and surface pads as described in the Phase I Plan of Operations for the Anarraaq and Aktigiruuq Exploration Program.

The modifications to this document include:

- a. SRCE Drawings 1,3 and 5 have been modified to reflect the updated access road designs for material sites AA-MS-1 and AA-MS-4.

The same updated figures can also be found in User Tab 1 in the SRCE Excel file.

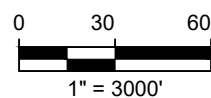


NOTES

1. Contours shown at 100ft intervals.

LEGEND

- Road
- Proposed Pad Footprint
- Wetland
- Material Site
- Bridge



REFERENCE

WGS84 Zone 3N.
 LIDAR topography from Teck, February 2018.
 The vertical datum is based on NAVD88
 Elevations (Geoid12B).
 Borrow areas and road footprints provided by
 Teck, April 2022.

srk consulting

SRK JOB NO.: USPR001085
 FILE NAME: USPR001085 - Site Overview.dwg

Teck

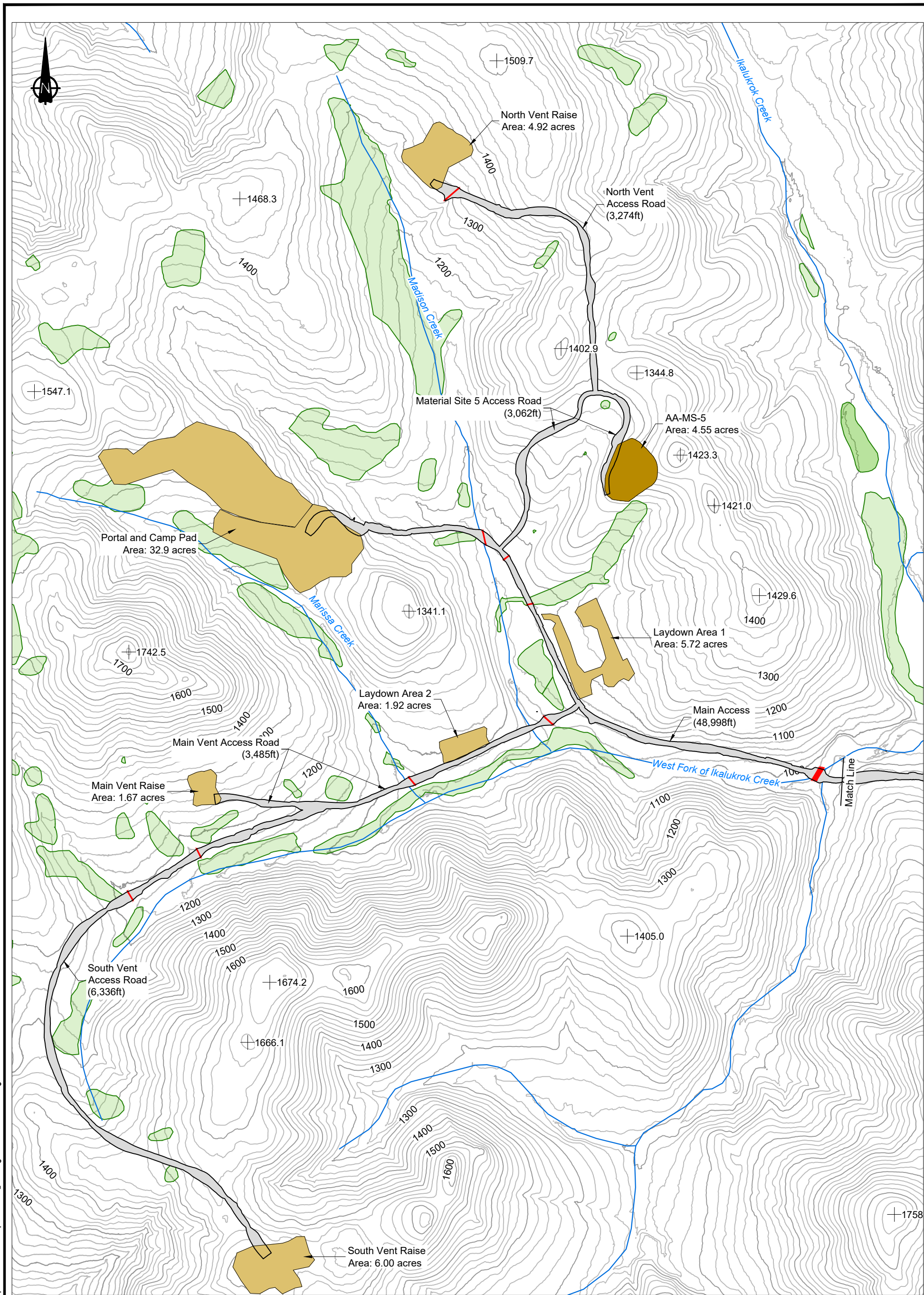
Teck American Incorporated

Anarraq and Aktigirug Exploration Program

**Reclamation Plan
 General Arrangement**

DATE: Sept. 26, 2022	APPROVED:	FIGURE: 1
-------------------------	-----------	--------------

C:\Users\sepp\Srk Consulting\NA USPR001085 Aktigirug Anarraq Closure Estimate Update - 040_Drafting_USPR001085 - Site Overview.dwg

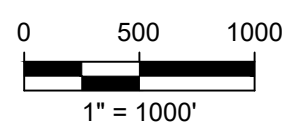


NOTES

1. Contours shown at 20ft intervals.

LEGEND

- Road
- Proposed Pad Footprint
- Wetland
- Material Site
- Bridge
- Culvert



REFERENCE

WGS84 Zone 3N.
 LiDAR topography from Teck, February 2018.
 The vertical datum is based on NAVD88 feet Elevations (Geoid 12B).
 Borrow areas and road footprints provided by Teck, April 2022.

srk consulting

SRK JOB NO.: USPR001085
 FILE NAME: USPR001085 - AR LO.dwg

Teck

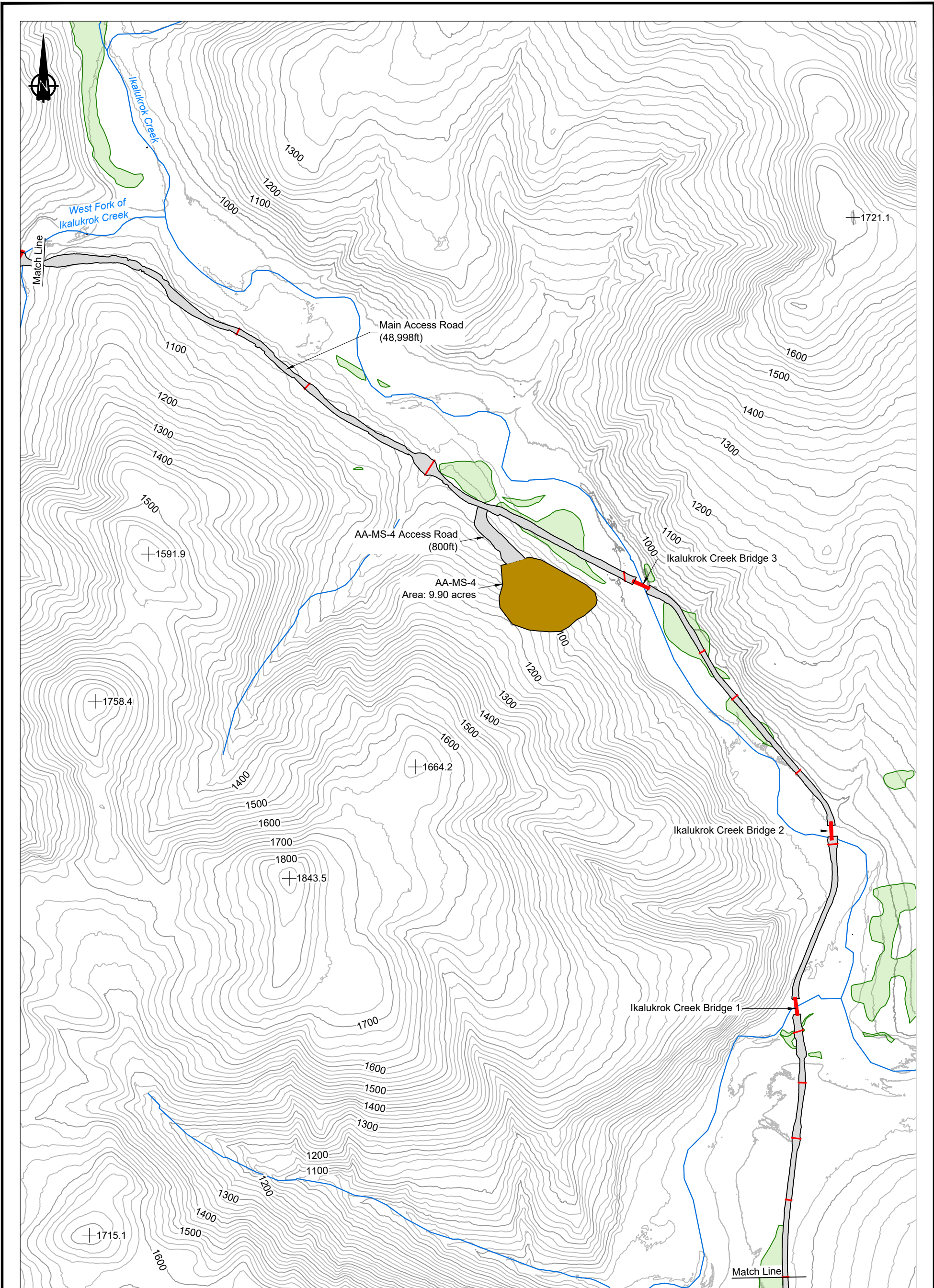
Teck American Incorporated

Anarraaq and Aktigirug Exploration Project

**Reclamation Plan
 Surface Development**

DATE: Sept. 26, 2022	APPROVED:	FIGURE: 2
-------------------------	-----------	--------------

C:\Users\sepp\Srk Consulting\NA USPR001085 Aktigirug Anorraaq Closure Estimate Update - 040_Drafting\USPR001085 - AR LO.dwg

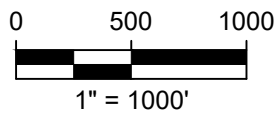


NOTES

1. Contours shown at 20ft intervals.

LEGEND

- Road
- Proposed Pad Footprint
- Wetland
- Material Site
- Bridge
- Culvert



REFERENCE

WGS84 Zone 3N.
 LiDAR topography from Teck, February 2018.
 The vertical datum is based on NAVD88 feet Elevations (Geoid 12B).
 Borrow areas and road footprints provided by Teck, April 2022.



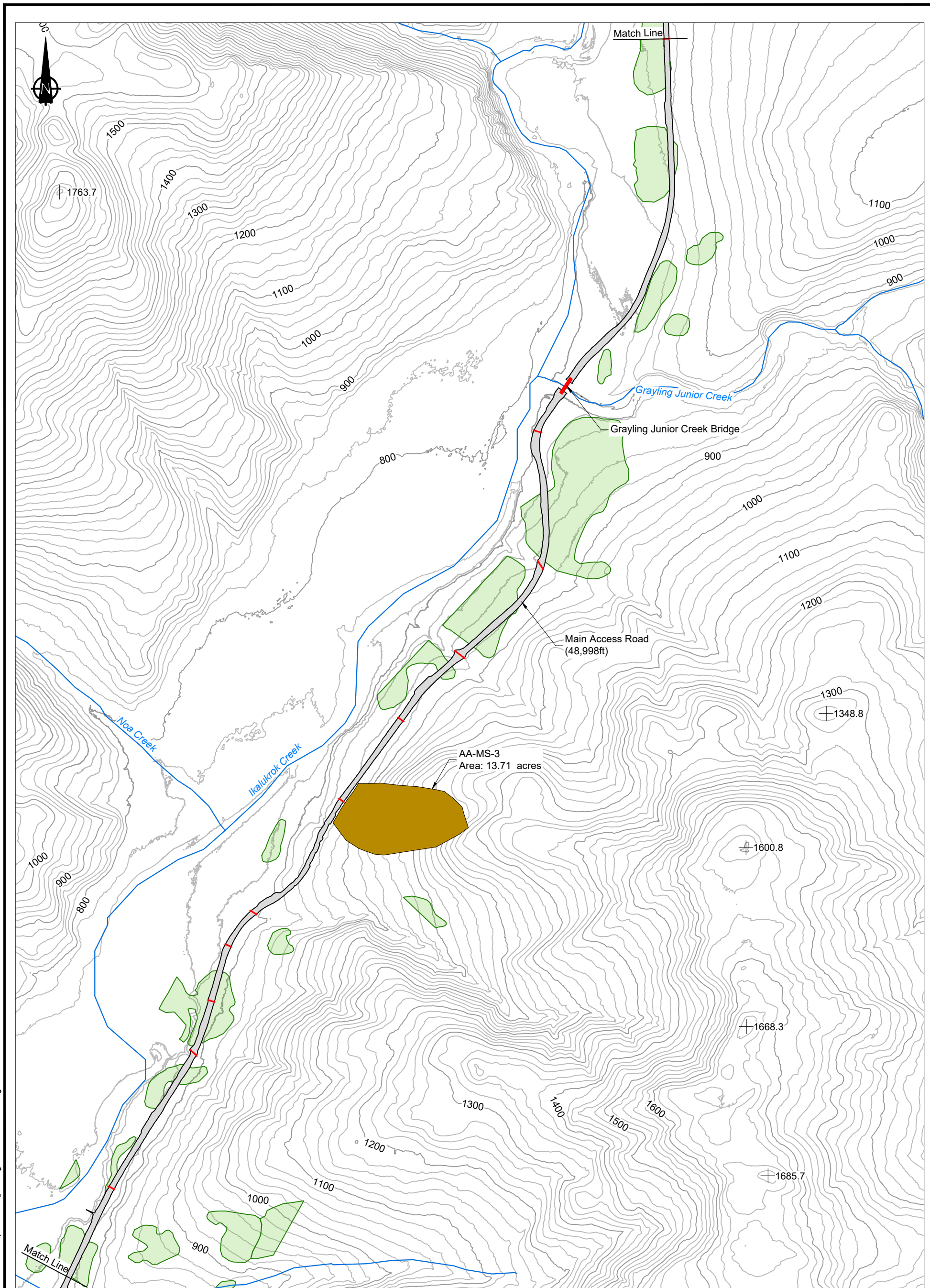
Anarraaq and Aktigruq Exploration Project

**Reclamation Plan
 Road Layout and Material Site 4**

SRK JOB NO.: USPR001085
 FILE NAME: USPR001085 - AR LO.dwg

Teck American Incorporated

DATE: Sept. 26, 2022 APPROVED: FIGURE: 3

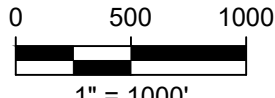


NOTES

1. Contours shown at 20ft intervals.

LEGEND

- Road
- Proposed Pad Footprint
- Wetland
- Material Site
- Bridge
- Culvert



REFERENCE

WGS84 Zone 3N.
 LiDAR topography from Teck, February 2018.
 The vertical datum is based on NAVD88 feet Elevations (Geoid 12B).
 Borrow areas and road footprints provided by Teck, April 2022.

SRK JOB NO.: USPR001085
 FILE NAME: USPR001085 - AR LO.dwg

Teck American Incorporated

Anarraaq and Aktigirug Exploration Project

**Reclamation Plan
 Road Layout and Material Sites 2 and 3**

DATE: Sept. 26, 2022	APPROVED:	FIGURE: 4
-------------------------	-----------	--------------

C:\Users\sepp\Srk Consulting\NA USPR001085 Aktigirug Anorraaq Closure Estimate Update - 040_Drafting\USPR001085 - AR LO.dwg

LEGEND

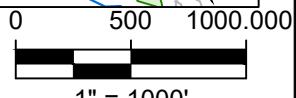
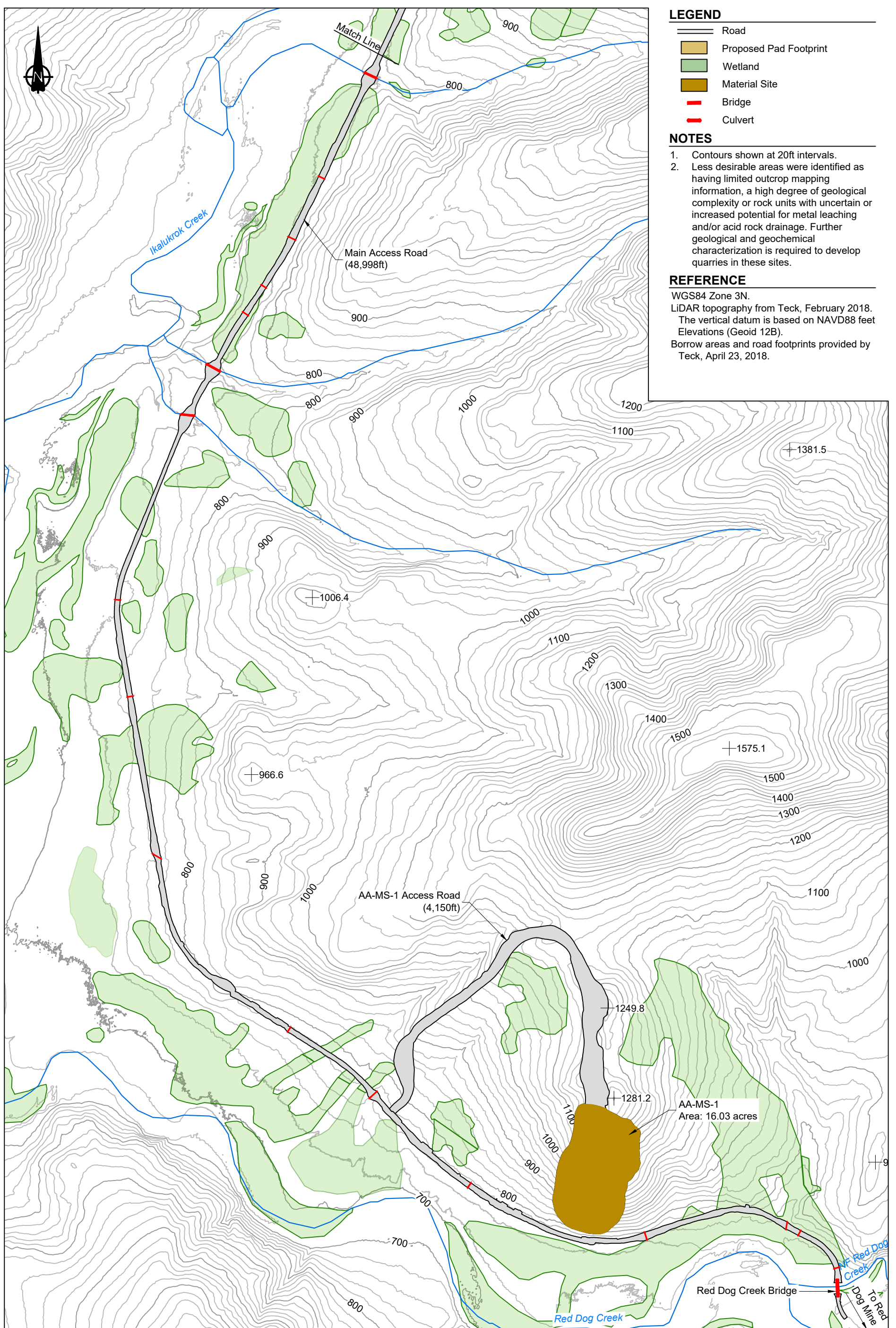
-  Road
-  Proposed Pad Footprint
-  Wetland
-  Material Site
-  Bridge
-  Culvert

NOTES

1. Contours shown at 20ft intervals.
2. Less desirable areas were identified as having limited outcrop mapping information, a high degree of geological complexity or rock units with uncertain or increased potential for metal leaching and/or acid rock drainage. Further geological and geochemical characterization is required to develop quarries in these sites.

REFERENCE

WGS84 Zone 3N.
 LiDAR topography from Teck, February 2018.
 The vertical datum is based on NAVD88 feet Elevations (Geoid 12B).
 Borrow areas and road footprints provided by Teck, April 23, 2018.



			Anarraq and Aktigirug Exploration Project	
	Teck American Incorporated		Reclamation Plan Road Layout and Material Site 1	
SRK JOB NO.: USPR001085 FILE NAME: USPR001085 - AR LO.dwg			DATE: Sept. 26, 2022	APPROVED: 
			FIGURE: 5	

C:\Users\srk\SRK Consulting\NA USPR001085 Aktigirug Anarraq Closure Estimate Update - 040_Drafting_USPR001085 - AR LO.dwg