



THE STATE
of **ALASKA**

GOVERNOR MICHAEL J. DUNLEAVY

Department of Natural Resources

DIVISION OF FORESTRY

SOUTHEAST AREA OFFICE
2417 Tongass Avenue, Suite 213
Ketchikan, AK 99901
Main: 907.225-3070

A large, light gray map of the state of Alaska serves as a background for the central text.

**Prospectus
For
Edna Bay Parlay One Timber Sale**

**SSE-1342 K
October 2021**

Table of Contents

INTRODUCTION:	3
LOCATION AND AREA:	3
VOLUME AND DESCRIPTION OF TIMBER:	4
ACCESS:	5
BIDDING:.....	5
BID GUARANTEE:	6
PERIOD OF CONTRACT:	6
BONDS:	7
PAYMENT:	7
OTHER CONTRACT REQUIREMENTS AND STIPULATIONS:.....	7
OPERATING PLAN:	8
PRIMARY MANUFACTURE:.....	8
RESERVATIONS:	8
DISCLAIMER:	8
GENERAL:.....	9
Attachment A MAPS	10
Vicinity Map	10
Unit Maps.....	10
Attachment B	11
Timber Cruise Report	11
Attachment C (Miscellaneous)	12
Attachment D (Forms)	13
Bid and Deposit Form.....	13
Attachment E	14
Sample Contract.....	14

TIMBER SALE PROSPECTUS

Timber Sale: Edna Bay Parlay One
SSE 1342-K

INTRODUCTION:

This Prospectus is intended to furnish sufficient information to enable prospective bidders to decide whether further investigation of the timber sale is warranted. The descriptions, estimates and other information within this Prospectus are not a part of the contract unless otherwise stated. Should the Prospectus be in error or contradict the sample contract, the sample contract governs. Prospective bidders are urged to examine the timber sale and to make their own estimates and conclusions. Quantities and quality of timber in the contract are not guaranteed. The timber sale area and sample contract should be reviewed prior to submission of a bid.

The timber being offered for sale is on State Forest land managed by the Alaska Department of Natural Resources, Division of Forestry (DOF).

LOCATION AND AREA:

The project area is on the southwest end of Kosciusko Island (See Attachment A). The Edna Bay Parlay One Timber Sale is approximately one mile south of the community school at Edna Bay. The timber sale area is located within Sections 33 and 34 of Township 68 South, Range 76 East, Copper River Meridian. The sale area is locatable on the USGS quadrangle maps, Craig D-5 and D-6.

In this timber sale area, the Division of Forestry is offering two clear-cut timber harvest units totaling approximately 168 acres. The units are shown on the attached Sale Area Map and the unit boundaries are designated on the ground by the State with pink “timber harvest boundary” flagging.

The proposed sale is located on forested uplands situated approximately 100 to 600 feet above sea level. The terrain is varied, with ground slopes generally less than 65%, but steeper slopes occur throughout the sale area, particularly in the vicinity of rock bluffs. Limestone “karst” features occur within the sale area, including several identified sink holes. The units may be harvested using a combination of ground based systems (shovels) and short span cable logging systems. Timber retention and yarding constraints are described in the Edna Bay Parlay One Forest Land Use Plan (FLUP).

The FLUP can be accessed at:

<https://aws.state.ak.us/OnlinePublicNotices/Notices/View.aspx?id=195554>

VOLUME AND DESCRIPTION OF TIMBER:

The harvest units being offered are mainly comprised of old growth timber. The timber sale was cruised in the summer of 2019 by the Division of Forestry using the Atterbury Cruise System. The sale information and timber volumes represented in this document and in the timber cruise reports (Attachment B) are estimates only.

Note:

For purposes of the timber cruise, the minimum log grade was a No. 4 or better sawlog – saw logs not meeting the minimum specifications of a No. 4 sawlog were not tallied, cruised or recorded.

Species/ Type	Volume (MBF) Net +Net Utility
Old Growth Sitka Spruce	1,236
Old Growth western hemlock	1,680
All western red cedar	1,285
Young Growth Sitka Spruce	43
Young Growth Western Hemlock	112
Small log and utility	408
Total all types	4,764

*MBF= one thousand board feet Scribner log scale.

The timber sale cruise report (Attachment B) contains the State’s estimate of timber type, quantity, and quality for this sale, along with descriptions of the sort and grade specifications which were applied during the cruise. Logs cruised not meeting the sort specifications for a saw log sort have been represented in the pulp sort (small log and utility). Obvious standing culls were not cruised.

The timber sale contract defines “Merchantable Sawlog” as “a No. 4 or better sawlog. The minimum merchantable sawlog dimensions for the purpose of this contract is 24 feet long plus trim, at least 6 inches in diameter inside the bark at the small end with at least 50% net scale according to the Official Rules of the Log Scaling & Grading Bureaus developed and authored by The Northwest Log Rules Advisory Group. Old growth is defined as being any log or tree that is 100 years old or older by ring count. Young growth is defined as being any log or tree that is 99 years old or younger by ring count.

Total acreage for both harvest units included in the timber sale is based on GPS field traverses using a GIS grade Trimble receiver combined with post-processing of field collected location data. For purposes of calculating a total timber volume estimate, the estimated acreage taken up by the existing mainline road and associated clearing was subtracted from the timber sale acreage.

The purchaser is required to yard all merchantable timber. Only merchantable saw logs of Sitka spruce, western hemlock, and western red cedar are required to be removed from the sale area.

Merchantable timber not meeting the merchantable saw log requirements that is hauled off the sale area shall be accounted for in scale and paid for at the utility rate.

ACCESS:

The sale area may be accessed either by saltwater or by overland road. Saltwater access is via the State LTF Access Road (1520354) on Kosciusko Island and the sale area begins approximately 0.25 miles inland from the LTF located on the south side of Edna Bay. Overland road access to the sale area and LTF is via the public float plane dock located on the north side of the Bay and the connecting road system. The existing road accesses a portion of the sale area. Approximately 2.26 miles of new spur road is required to be constructed on State Forest land to DOF Road Standards. Closure of the same 2.26 miles of State spur road is required at the conclusion of the sale. Maintenance to the standards contained in the Alaska Forest Resources Practices Act (FRPA) and Regulations is required on all the roads used, constructed, closed or associated with the commercial forest operations on this timber sale. Construction materials such as rock and timber on State land shall only be used on State land. The development or expansion of rock sources associated with the timber sale requires preapproval of the DOF.

Road use agreements required by the University to operate in the area of the sale have been secured by the State. All other agreements that may be required are the responsibility of the Purchaser.

All permits required to maintain, modify and use the timber sale area are the operator's responsibility to procure and maintain for the duration of this contract. The DOF is the designated land manager for forest resource use associated with the log transfer facility (AKG701066) on the south side of Edna Bay authorized in the general permit AKG701000 of the Alaska Pollutant Discharge Elimination System (APDES). Use of the facility for any other use not covered by the timber sale contract requires a separate written authorization from the land manager.

The use of facilities on Kosciusko Island associated with the timber sale other than in the sale area requires written authorization by the managing authority prior to the DOF approval of the operating plan and subsequent start of operations. Purchaser shall adhere to all stipulations contained within the authorizations for the facility(s) and roads, provide the DOF with copies of all pertinent information necessary for required reporting, and cover the cost of all related fees and expenses.

BIDDING:

This is a SEALED BID SALE. To qualify for bidding, all bidders must submit a copy of their current Alaska Business License with their sealed bid. Sealed Bids must be submitted on forms provided by the Division of Forestry, marked on the outside of the envelope with the timber sale name and number, and addressed to the Southern Southeast Area Office, Alaska Division of Forestry, 2417 Tongass Avenue, Suite 213, Ketchikan, AK 99901. Sealed Bids will be accepted until the bid opening, at 2:00 P.M. prevailing time, November 16, 2021. Sealed bids may also be

presented in person to the Southeast Area Forester before the bid opening. All bids must be in the physical possession of the Southeast Area Forester before the bid opening. Bidders are responsible for assuring that their complete bid package is delivered on time.

The State reserves the right to reject any or all bids. Unless all bids are rejected, the State will award the sale to the responsible qualified bidder offering the highest total bid for the timber as determined by the State using the State's bid sheet. The bidder will submit prices per MBF by species. The bidder's submitted price per MBF times the DOF's estimate of timber volume for each species will be the basis of the bid evaluation. The basis of the bid is on the merchantable saw log volume of Sitka spruce, western hemlock and western red cedar. In the final accounting of the contract, the successful bidder will be responsible for payment of the actual timber harvested as it is scaled. The minimum acceptable total bid price for the timber is \$ 913,100.00.

BIDS MUST BE SUBMITTED ON FORMS PROVIDED BY THE STATE AND CAN BE OBTAINED AT THE SOUTHEAST AREA OFFICE IN KETCHIKAN. Forms are also included in this prospectus packet and online.

If a tie in the high bid occurs, the successful bidder will be determined by lot at the time of bid opening.

If bidding as an agent for an individual, partnership, or corporation, the agent must submit with the bid a notarized power-of-attorney authorizing such agency. No agent may represent more than one principal, or bid in competition with the agent's principal.

BID GUARANTEE:

A deposit in the amount of 5% of the total bid will be required at the time bids are submitted.

The successful bidder's deposit will be credited towards the Advanced Stumpage Payment due to the State. Deposits from unsuccessful bidders will be returned at the time the sale is awarded. The deposit furnished by the high bidder whose bid was declared acceptable will be retained as liquidated damages per AS 38.05.860 if the bidder does not sign the contract, and furnish a satisfactory performance bond within 30 days of receipt of the contract. The bid deposit shall be in the form of certified check, cashier's check, money order, or any combination of these.

PERIOD OF CONTRACT:

All contract obligations shall be completed within three years from execution of the contract. In order to protect water, soil, or environmental quality, the State reserves the right to temporarily suspend operations.

BONDS:

A Performance Bond will be deposited with the State upon execution of this contract. The amount of the Performance Bond will be \$100,000.00.

The PURCHASER shall deposit the bond with the State either in the form of a cashier's check or money order made payable to the STATE or as a certificate of deposit with all rights except the interest assigned to the State. If the bond is in the form of cash or check the STATE shall place the Performance Bond in a separate State account and all interest on the Performance Deposit shall accrue to the benefit of STATE.

PAYMENT:

Payments will be based on a total monthly scale with stumpage payment due to the State prior to 15th of each month for the previous month's scale. The Advance Stumpage Payment will be applied to the last stumpage payment or combination of payments depending upon the Purchaser's current operation plan.

OTHER CONTRACT REQUIREMENTS AND STIPULATIONS:

The Purchaser will have 30 days from the receipt of the contract to sign, notarize, and return it to the Southeast Area Forester.

Volume harvested from the sale shall be reported per the contract to meet State requirements as outlined in the sample contract.

The volumes harvested within this sale shall be 100% scaled unless otherwise agreed to in writing by the State. Sample scale of the hemlock and Utility wood using a method mutually acceptable to the DOF and the purchaser may be considered appropriate by the State.

Wood waste from log processing associated with State wood from Kosciusko Island at the LTF is authorized for disposal (subsequent to the approval of a site plan) on the downhill side of the overburden waste area adjacent to and identified in the development plan for the permitted LTF. Other methods or locations of disposal of wood waste require preapproval of the DOF.

The LTF and access road are adjacent to a documented public moorage area and the community of Edna Bay. All operations associated with the timber sale shall respect the existing uses in the area and accommodate incidental traffic when life and safety are not at risk by the direct actions associated with the timber harvest. Public traffic may be discouraged by the PURCHASER from using the area during active hauling of equipment, rock, and logs. Traffic may only be restricted on portions of the road and raft storage grounds directly affected by active operations. Closure of the road shall only be done with the authorization of the DOF.

The sale will require the construction, maintenance and closure of roads in accordance with the contract.

OPERATING PLAN:

An Operating Plan is required to be submitted two weeks in advanced of the start of operations; the plan will be reviewed as soon as feasible by the State for compliance with appropriate management plans, the sale contract, and the State's best interest. The requirements of the Operating Plan are set out in the contract. The operating plan will be updated as conditions change and will always reflect the Purchaser's plans and actual operations.

The Operating Plan must comply with the requirements of the Alaska Forest Resources and Practices Act (FRPA) under AS 41.17, the Alaska Land Act under AS 38.05, and 11 AAC 71.300. The Operating Plan must provide the STATE with sufficient information to allow the STATE to understand the timber operations, as they will occur in the field. The Operating Plan shall include areas of concern identified by the PURCHASER, including any potential conflicts with FRPA and the FLUP.

PRIMARY MANUFACTURE:

Primary manufacture of logs from this sale is not required.

RESERVATIONS:

The State reserves the right to waive technical defects in this Prospectus and reject any and all bids and, unless all bids are rejected, the sale will be awarded to the responsible qualified bidder offering the highest bid. The State reserves the right to award the timber for the amount of the next highest bidder if the Director considers the highest bidder unqualified to fulfill the requirements of the contract, or if the contract is not executed by the highest bidder. The State also reserves the right to waive any informality in the bids received whenever the waiver is in the best interests of the State. The State will reject a bid containing or submitted with a condition or qualification on or a material alteration of the terms as specified in the notice of sale, or which is not in accordance with the law.

DISCLAIMER:

This Prospectus is subject to the following disclaimers:

The information provided in the prospectus is only general background information. The bidder has full and unrestricted access to the sale area and has the full and unlimited opportunity to closely inspect the property, timber access, infrastructure, and operating conditions and has evaluated options available for transporting logs, fuel, equipment and material; and the bidder is knowledgeable of timber and is relying solely upon its own expertise or that of its consultants.

The bidder assumes each, every and all risk with regard to the sale and purchase of timber from the DOF.

The bidder accepts full responsibility for determining stand characteristics, timber volume and species composition, harvest unit terrain, harvest system requirements and operational conditions as they pertain to the bidder's markets, needs, equipment and other resources.

The bidder may not rely in any manner upon any representation by the DOF or any of its employees or representatives outside the provisions of this prospectus or the terms and conditions of the draft contract, for any purpose, including the interpretation of any provision of the prospectus or compliance with the requirements of the prospectus. No amendment of this prospectus may be made orally.

The maps provided with this prospectus are approximate and no guarantee or warranty is made as to their accuracy. It is the bidder's responsibility to examine the sale area and take such other steps as may be necessary to ascertain the exact character and location of the sale area, the general and local conditions which can affect this project, and to satisfy itself as to quantities and quality of timber present.

The DOF believes the statements in this prospectus are substantially accurate. However, the DOF cannot and does not make any warranties or representations of any kind or character, expressed or implied, as to the availability, quantity, quality, harvestability, merchantability, fitness for a particular use or purpose, matters of title, physical conditions, availability of access, operating projections, valuations, governmental regulations, or any other matter concerning the timber offered here in for sale. The composition of the timber offered for sale is not warranted for grade, size, density defect, taper or any other stand or log component. The DOF will not be liable under any circumstances for any damages relating to the purchase or use of such timber or any infrastructure or for any special, consequential or incidental damages. The DOF will not be liable for and will not pay any costs incurred due to the rejection for any reason of any or all bids, cancelation of this bid, the successful bidder's failure to execute the Contract or any other reason, including fault of DOF or its representatives.

GENERAL:

Further information, including copies of this Prospectus, Bid Form, Timber Sale Cruise, and a sample contract may be obtained by writing to Area Forester at the Southeast Area Office, Alaska Division of Forestry, 2417 Tongass Avenue, Suite 213, Ketchikan, AK 99901, or by calling (907) 225-3070. The information and documents may also be picked up in person by visiting the Southeast Area Office or online at:

<http://forestry.alaska.gov/timber/ketchikan>

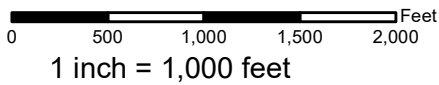
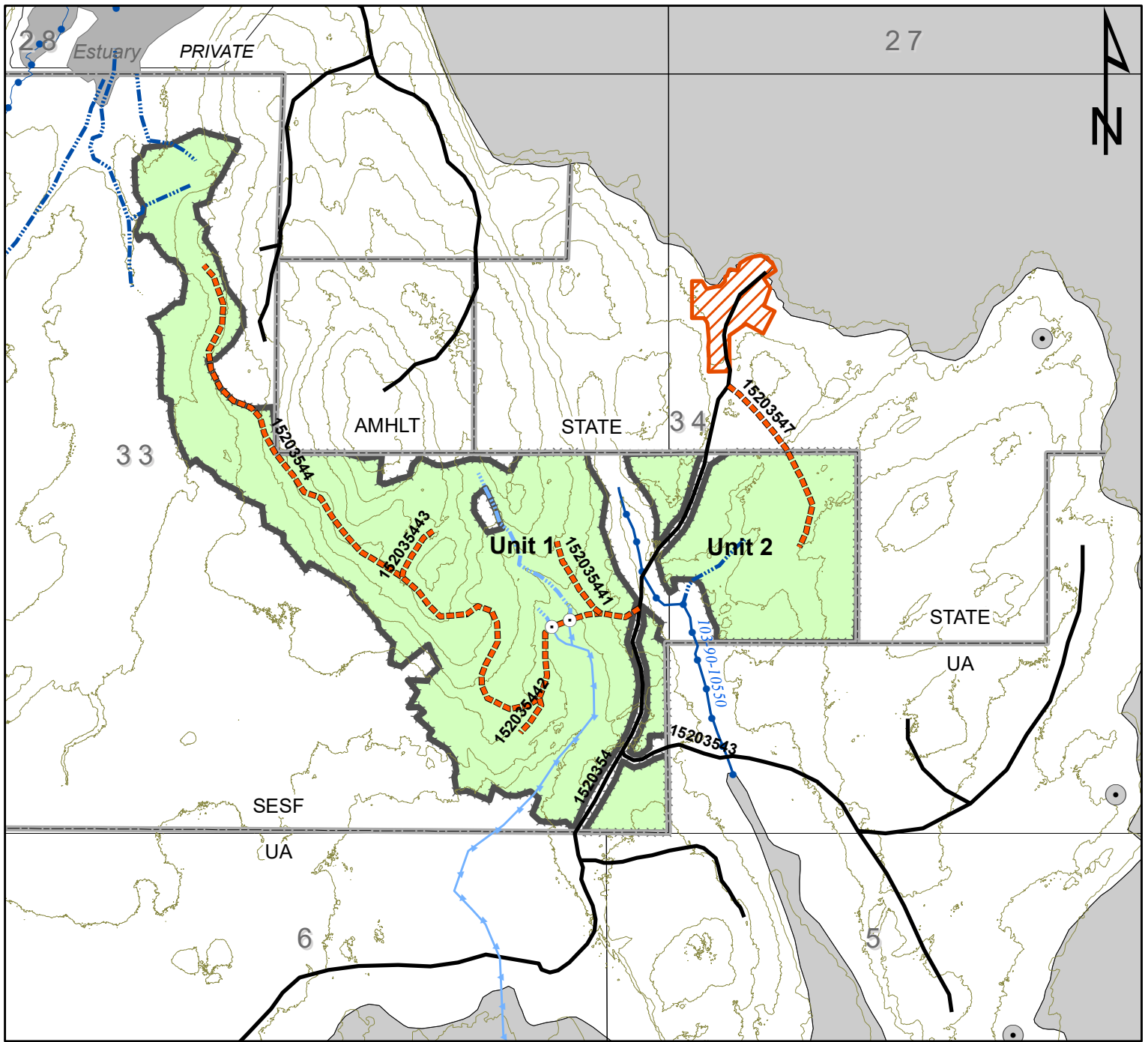
Attachment A MAPS

Vicinity Map

(Exhibit A of FLUP) 1 Page

Unit Maps

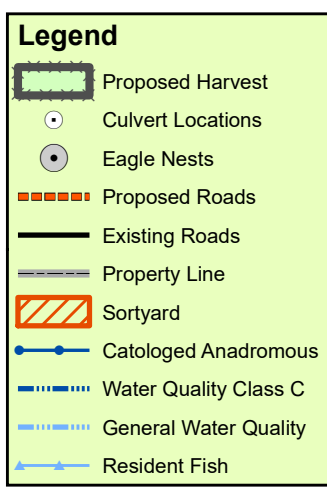
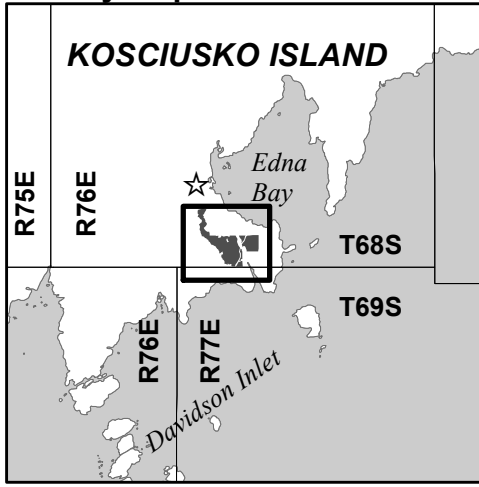
(Exhibit A of FLUP) 3 Pages



T68S, R76E
Sections 33 and 34 CRM

Contour Interval = 40 feet

Vicinity Map 1 in = 3 miles



APPENDIX A1
SSE-1342K
EDNA BAY PARLAY ONE
TIMBER SALE
AREA MAP



DIVISION OF FORESTRY

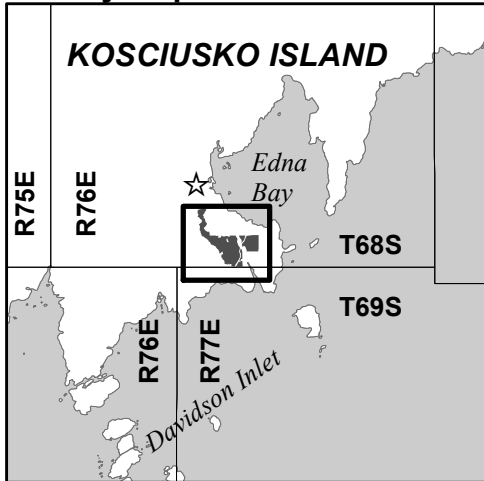
Date: 8/13/2019 PL



T68S, R76E
Sections 33 and 34 CRM

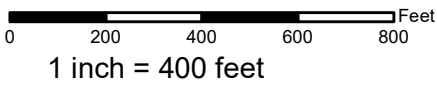
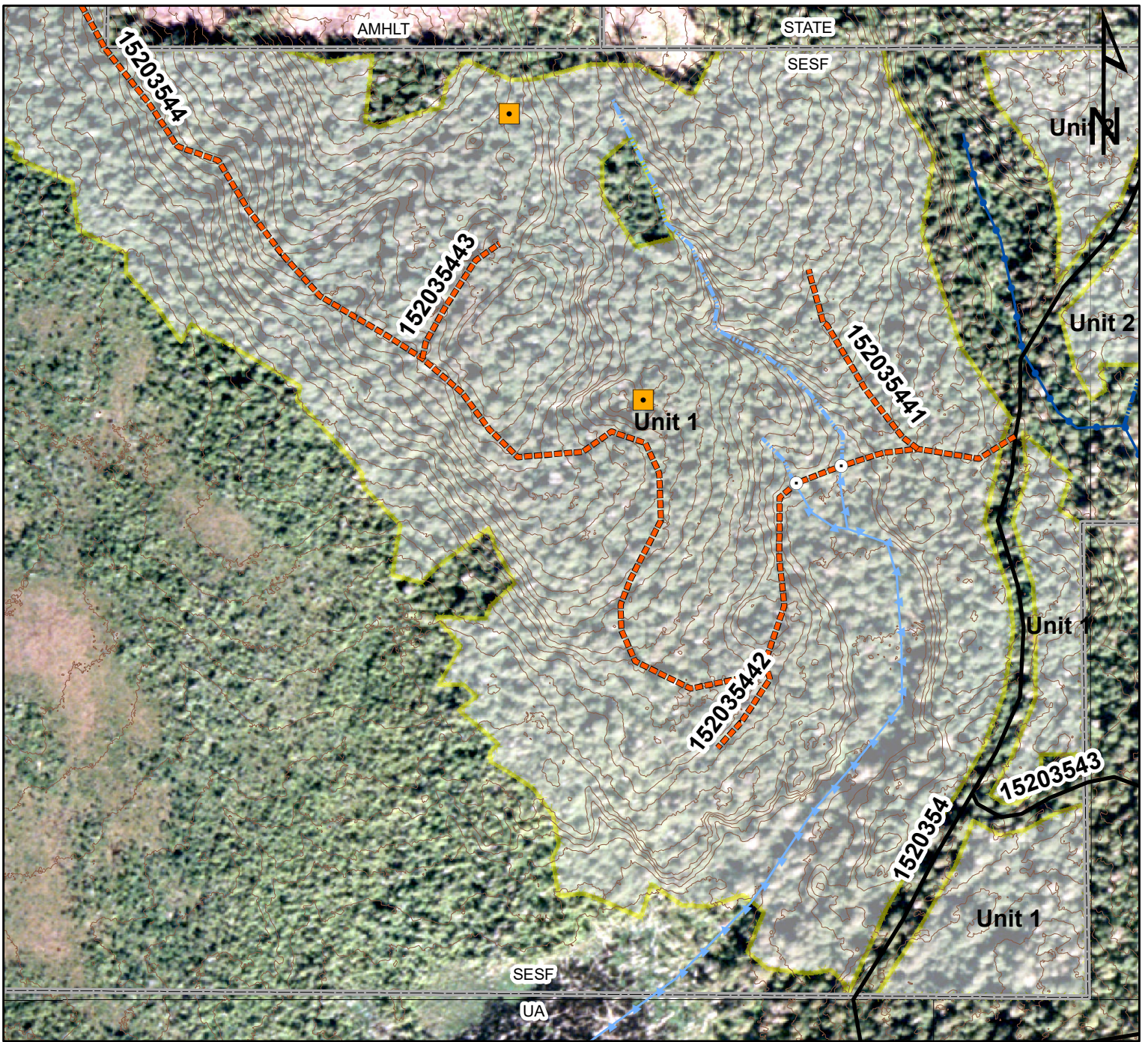
Contour Interval = 10 feet

Vicinity Map 1 in = 3 miles



APPENDIX A2
SSE-1342K
EDNA BAY PARLAY ONE
TIMBER SALE
UNIT MAP
Page 1 of 3



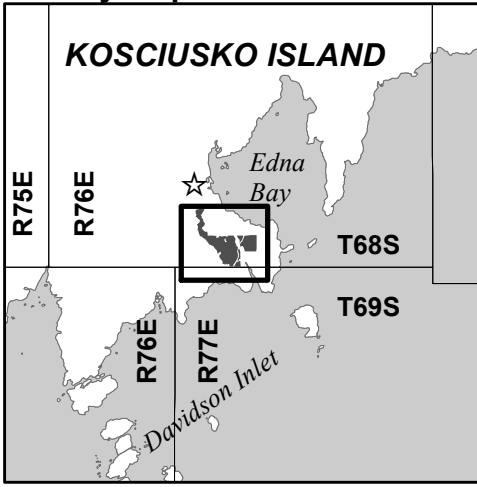


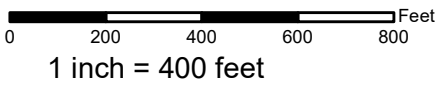
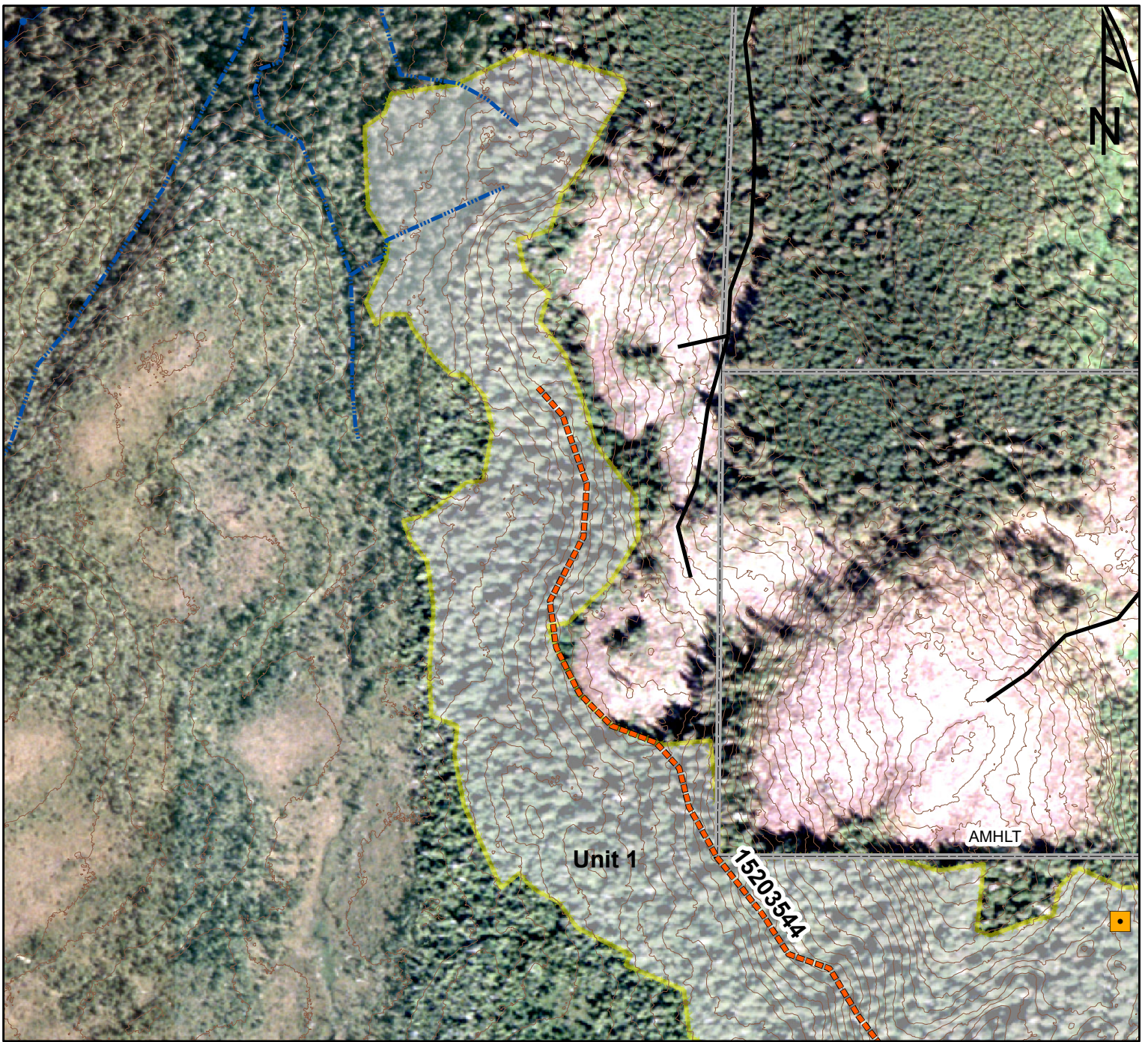
T68S, R76E
Sections 33 and 34 CRM

Contour Interval = 10 feet

APPENDIX A2
SSE-1342K
EDNA BAY PARLAY ONE
TIMBER SALE
UNIT MAP
Page 2 of 3

Vicinity Map 1 in = 3 miles



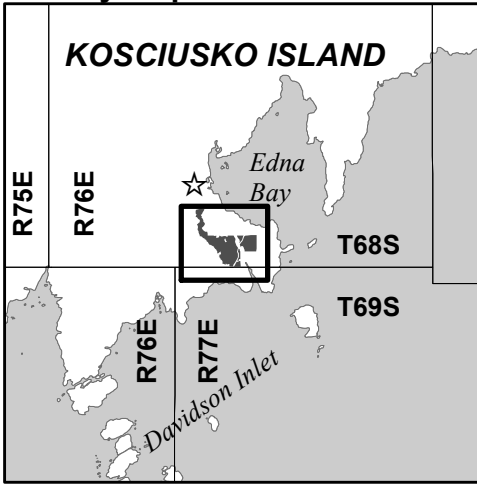


T68S, R76E
Sections 33 and 34 CRM

Contour Interval = 10 feet

APPENDIX A2
SSE-1342K
EDNA BAY PARLAY ONE
TIMBER SALE
UNIT MAP
Page 3 of 3

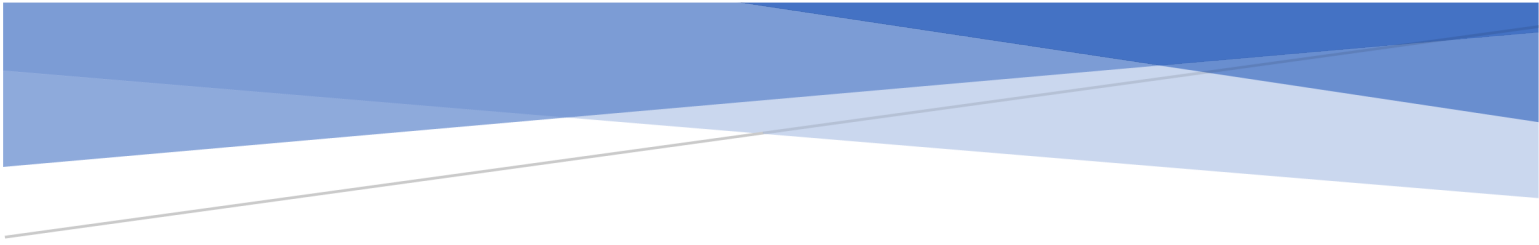
Vicinity Map 1 in = 3 miles



Edna Bay Parlay One Timber Sale Prospectus

Attachment B

Timber Cruise Report
(14 pages)



EDNA BAY PARLAY ONE TIMBER SALE

Timber Cruise

Abstract

Timber Cruise for Parlay One Timber Sale consisting of State Old Growth. Publish December 2019.

Southeast Office (DNR-DOF)

Table of Contents

DOF Parlay One Old Growth Timber Cruise	2
Sample Type/ Frequency	2
Min. Size/ Sorts/ Specifications.	2
Acreage	2
Stratification.....	2
Parlay One Timber Sale Maps	3
Vicinity Map	3
Parlay One Old Growth Cruise Tabular Summaries	4
Board Foot Volumes Report.....	4
Statistical Report.....	4
ADNR-DOF Sort Guidelines	5
Southeast Alaska	5

Parlay One Timber Sale Cruise Report

December 10, 2019

This report is a compilation of information summarizing the estimation of timber volume and quality in the Parlay One Timber Sale on State land on Kosciusko Island near the community of Edna Bay as delineated in the Forest Land Use Plan dated September 24, 2019. The stand was sampled as one type mainly consisting of old growth timber. In a small portion of the sale area on the east side, the age class is intermixed with young growth; the extent of this mixing was considered minor, the dominate characteristic of the stand controlled how the species are described in this report as far as age. For the purpose of this report, young growth is associated with potentially merchantable timber that is generally less than 70 years old. The balance of the other timber described and cruised is considered old growth. The peninsula was logged on its shore sides in the mid 1950's; the young growth stands are a product of that activity and other stand disturbance related to that harvest. Residual old growth areas occupy the bulk of the sale as represented.

DOF Parlay One Old Growth Timber Cruise

Sample Type/ Frequency

The units were cruised during the summer of 2019 by DOF using a variable plot cruise sampling method based on an unbiased grid system. The grid was spaced on 2 x 5 chains representing one acre per cruise plot. This combined sampling produced 170 cruise plots over 168 acres. The Atterbury Cruise Program was used to manage the data. A basal area factor of 40 BAF at 16 feet above projected stump height was used to sample trees. Obvious cull trees were not recorded. This obtained an average of 3.7 trees per plot overall.

Min. Size/ Sorts/ Specifications.

Only trees containing a minimum merchantable saw log were sampled. Diameters measuring under 12 inches at four feet above stump height were categorically not recorded. Sorts were developed based on perceived industry markets. See attached ADNR-DOF Old Growth and Second Growth Sort Guidelines for Southeast Alaska. Log grades were determined using Official Log Scaling and Grading Rules for the Pacific Northwest as applied and accepted in the Southeast Alaska region. Logs not meeting DOF saw log sorts were recorded as pulp logs with the minimum size being a #4 saw log; utility logs (having 50% sound usable chips).

Acreage

Cruised acreage was determined using ArcGIS, based off points collected along the harvest unit line using a GIS grade GPS receiver that was restricted to sampling positions when theoretical post processed accuracy was calculated to be less than 10 feet. GPS data was post processed. The location and width of the existing cleared road corridors was subtracted from the GIS acreage to calculate the standing timber acreage used in the Atterbury Cruise Program to determine project volumes. ArcGIS calculated there to be 168 acres of timber.

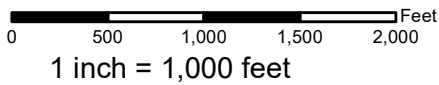
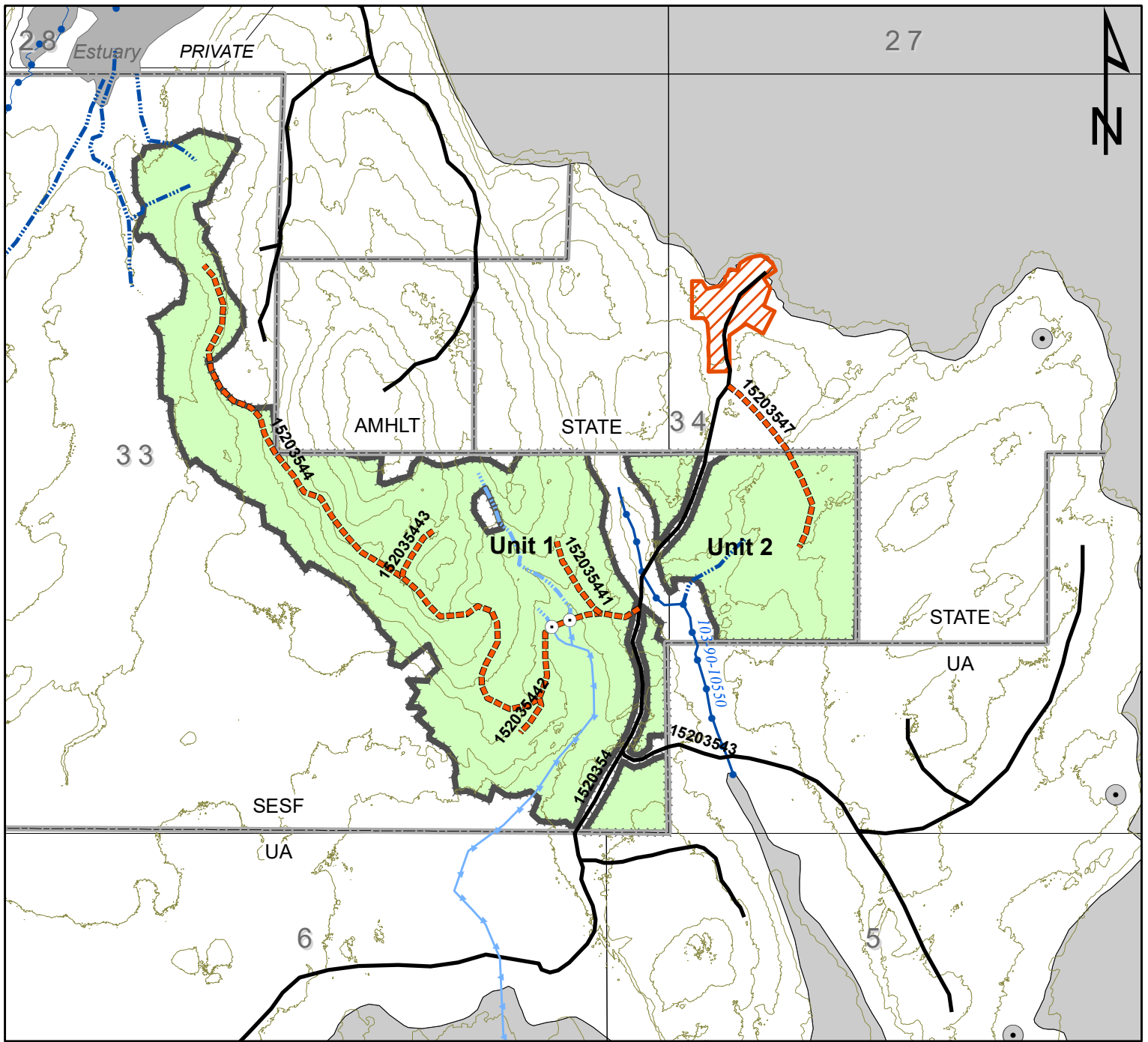
Stratification

The timber was not stratified by timber type.

Parlay One Timber Sale Maps

(1 page)

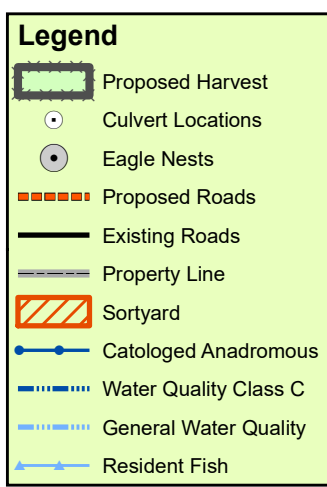
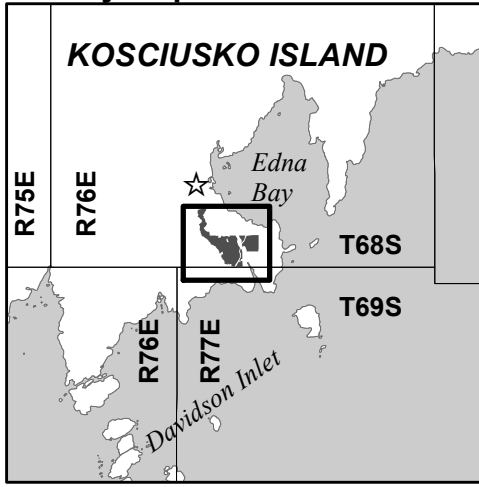
Vicinity Map



T68S, R76E
Sections 33 and 34 CRM

Contour Interval = 40 feet

Vicinity Map 1 in = 3 miles



APPENDIX A1
SSE-1342K
EDNA BAY PARLAY ONE
TIMBER SALE
AREA MAP



DIVISION OF FORESTRY

Date: 8/13/2019 PL

Parlay One Old Growth Cruise Tabular Summaries

(Atterbury Program Reports, 4 Pages)

Type 99 Old Growth Unit

Board Foot Volumes Report

Statistical Report

T TSPCSTGR		Species, Sort Grade - Board Foot Volumes (Type)										Page 1								
		Project: PARLAY99										Date 12/10/2019								
												Time 8:48:42AM								
T68S R76E S33 T9999										T68S R76E S33 T9999										
Twp	Rge	Sec	Tract	Type	Acres	Plots	Sample Trees	CuFt	BdFt											
68S	76E	33	WEST	9999	168.00	170	625	S	W											
S Spp	So T	Gr rad	% Net BdFt	Bd. Ft. per Acre			Total Net MBF	Percent Net Board Foot Volume								Average Log				Logs Per /Acre
				Def%	Gross	Net		Log Scale Dia.				Log Length				Ln	Dia	Bd	CF/ Lf	
								6-11	12-17	18-23	24+	12-23	24-31	32-36	37-99	Ft	In	Ft	Lf	
WH	SH	2S		31.6	95	65	11					100		42	58	32	29	803	5.98	.1
WH	D	3S	23	10.0	2,970	2,672	449	67	19	7	7	12	10	16	62	35	9	115	0.98	23.3
WH	D	4S	7	8.0	906	833	140	89	11			30	27	16	27	27	7	43	0.61	19.3
WH	HI	1S	1	5.9	97	92	15							100		33	28	1099	5.82	.1
WH	J	2S	2	5.3	152	144	24		48	52		18	21		60	29	18	371	2.57	.4
WH	K	2S	34	9.8	4,386	3,958	665		50	39	11	1	6	14	79	37	16	375	2.28	10.5
WH	K	3S	12	10.1	1,503	1,352	227	0	72	19	9	1	28	41	30	32	14	227	1.73	6.0
WH	RS	1S		7.2	97	90	15							44	56	38	25	982	4.41	.1
WH	RS	2S	7	7.5	860	795	134			51	49		15	41	44	34	22	693	3.77	1.1
WH	PU	3S	1	12.1	32	28	5	100							100	39	9	115	1.15	.2
WH	PU	4S			38	38	6	100				56		44		25	6	41	0.63	.9
WH	PU	U	13	15.6	1,724	1,456	245	25	24	33	18	19	23	10	48	27	10	124	1.23	11.8
WH	Totals		41	10.4	12,860	11,523	1,936	26	35	25	14	8	14	20	58	32	10	156	1.28	73.8
RC	SC	3S	6	1.2	505	499	84	55	45				20	9	72	36	9	127	1.46	3.9
RC	SC	4S			8	8	1	100					100			28	6	30	0.71	.3
RC	L	3S	10	31.5	1,067	731	123			14	86	31	34	27	7	25	28	653	6.93	1.1
RC	M	3S	50	8.7	4,221	3,854	647		16	38	46		24	32	44	34	20	592	4.50	6.5
RC	M	2R	2	6.3	177	166	28								100	40	32	1750	9.61	.1
RC	RC	3S	29	15.1	2,574	2,186	367	18	35	17	30	18	28	16	38	31	14	224	2.45	9.8
RC	RC	4S	3	5.3	222	210	35	95	5			37	10	31	23	26	7	43	0.73	4.9
RC	Totals		27	12.8	8,774	7,654	1,286	12	21	25	42	9	25	25	41	31	14	288	2.72	26.6
SS	SH	1S	2	25.9	291	216	36					11	31	58		29	40	1575	10.32	.1
SS	SH	2S	2	23.6	157	120	20							100		33	31	1141	6.50	.1
SS	SH	S		10.2	66	59	10							100		40	27	1230	6.14	.0
SS	D	3S	9	5.2	775	734	123	25	16	15	44	28	14	19	39	32	13	250	1.81	2.9
SS	D	4S	1		70	70	12	95	5			29	7	41	23	23	8	60	0.79	1.2
SS	HI	1S	8	5.0	655	622	105						20	36	44	34	42	2788	13.73	.2
SS	HI	2S	1	4.9	103	98	16						43	57		28	44	2501	13.92	.0
SS	HI	SL	6	6.5	531	496	83						19	55	25	34	46	3186	13.74	.2
SS	J	1S	4	4.8	396	377	63						12	71	17	35	35	1881	7.81	.2
SS	J	2S	4	2.1	288	282	47		64	36			12	20	68	38	23	862	3.86	.3
SS	J	S	2	2.1	172	169	28			32	68				100	35	25	979	4.37	.2
SS	K	2S	21	4.1	1,801	1,727	290		11	37	52		3	40	57	38	22	848	3.79	2.0
SS	K	3S	6	5.5	585	553	93		17	31	52	11	33	27	29	28	21	578	3.58	1.0
SS	RS	1S	3	1.6	208	205	34						40		60	32	42	2681	10.36	.1
SS	RS	2S	20	5.7	1,745	1,645	276			3	97		17	56	27	33	35	1874	8.70	.9
SS	PU	U	11	16.2	1,048	878	148	3	2	2	93	9	13	19	59	34	23	987	5.34	.9
SS	Totals		29	7.2	8,891	8,251	1,386	3	5	15	77	5	15	41	39	32	21	797	4.22	10.4
HM	G	2S	4	13.6	37	32	5		100					100		36	13	190	1.44	.2
HM	G	3S	55		374	374	63	84	16				8	51	41	36	9	118	0.82	3.2

TC TSTATS				STATISTICS				PAGE	1	
				PROJECT PARLAY99				DATE	12/10/2019	
TWP	RGE	SECT	TRACT	TYPE	ACRES	PLOTS	TREES	CuFt	BdFt	
68S	76E	33	WEST	9999	168.00	170	625	S	W	
				TREES	ESTIMATED	PERCENT				
				PER PLOT	TOTAL	SAMPLE				
				PLOTS	TREES	TREES	TREES			
TOTAL		170	625	3.7						
CRUISE		167	625	3.7	12,347		5.1			
DBH COUNT										
REFOREST										
COUNT										
BLANKS		3								
100 %										
STAND SUMMARY										
	SAMPLE	TREES	AVG	BOLE	REL	BASAL	GROSS	NET	GROSS	NET
	TREES	/ACRE	DBH	LEN	DEN	AREA	BF/AC	BF/AC	CF/AC	CF/AC
W HMLK	290	45.7	19.4	57	21.2	93.5	12,860	11,523	2,994	2,994
RCDR OG	232	17.6	29.1	52	15.0	81.0	8,774	7,654	2,270	2,267
S SPRUCE	78	4.6	30.9	77	4.3	24.2	8,891	8,251	1,412	1,413
HMLK SG	19	4.5	15.3	60	1.5	5.7	699	689	174	174
SPRC SG	6	1.1	17.9	64	0.5	1.9	263	263	69	69
TOTAL	625	73.5	22.7	58	43.3	206.3	31,488	28,380	6,919	6,916
CONFIDENCE LIMITS OF THE SAMPLE										
68.1 TIMES OUT OF 100 THE VOLUME WILL BE WITHIN THE SAMPLE ERROR										
CL: 68.1 %	COEFF	SAMPLE TREES - BF				# OF TREES REQ.		INF. POP.		
SD: 1.0	VAR.%	S.E.%	LOW	AVG	HIGH	5	10	15		
W HMLK	110.1	6.5	486	520	553					
RCDR OG	83.8	5.5	747	790	834					
S SPRUCE	88.5	10.0	3,827	4,252	4,678					
HMLK SG	56.7	14.6	203	238	272					
SPRC SG	51.4	22.9	251	325	399					
TOTAL	174.2	7.0	1,004	1,080	1,155	1,211	303	135		
CL: 68.1 %	COEFF	SAMPLE TREES - CF				# OF TREES REQ.		INF. POP.		
SD: 1.0	VAR.%	S.E.%	LOW	AVG	HIGH	5	10	15		
W HMLK	93.0	5.5	115	122	129					
RCDR OG	68.8	4.5	205	215	224					
S SPRUCE	81.1	9.2	632	696	760					
HMLK SG	46.6	12.0	52	59	66					
SPRC SG	41.7	18.6	65	80	95					
TOTAL	130.5	5.2	215	227	238	680	170	76		
CL: 68.1 %	COEFF	TREES/ACRE				# OF PLOTS REQ.		INF. POP.		
SD: 1.0	VAR.%	S.E.%	LOW	AVG	HIGH	5	10	15		
W HMLK	102.9	7.9	42	46	49					
RCDR OG	170.0	13.0	15	18	20					
S SPRUCE	240.5	18.4	4	5	6					
HMLK SG	540.3	41.4	3	4	6					
SPRC SG	764.5	58.6	0	1	2					
TOTAL	64.8	5.0	70	73	77	168	42	19		
CL: 68.1 %	COEFF	BASAL AREA/ACRE				# OF PLOTS REQ.		INF. POP.		
SD: 1.0	VAR.%	S.E.%	LOW	AVG	HIGH	5	10	15		
W HMLK	92.9	7.1	87	93	100					
RCDR OG	140.5	10.8	72	81	90					
S SPRUCE	163.5	12.5	21	24	27					
HMLK SG	540.4	41.4	3	6	8					
SPRC SG	690.0	52.9	1	2	3					
TOTAL	49.5	3.8	198	206	214	98	24	11		

TC TSTATS				STATISTICS				PAGE	2	
				PROJECT	PARLAY99			DATE	12/10/2019	
TWP	RGE	SECT	TRACT	TYPE	ACRES	PLOTS	TREES	CuFt	BdFt	
68S	76E	33	WEST	9999	168.00	170	625	S	W	
CL:	68.1 %	COEFF		NET BF/ACRE			# OF PLOTS REQ.		INF. POP.	
SD:	1.0	VAR.	S.E.%	LOW	AVG	HIGH	5	10	15	
CL:	68.1 %	COEFF		NET BF/ACRE			# OF PLOTS REQ.		INF. POP.	
SD:	1.0	VAR.%	S.E.%	LOW	AVG	HIGH	5	10	15	
W HMLK		104.9	8.0	10,597	11,523	12,449				
RCDR OG		140.3	10.8	6,831	7,654	8,476				
S SPRUCE		182.2	14.0	7,098	8,251	9,403				
HMLK SG		633.1	48.5	355	689	1,023				
SPRC SG		666.8	51.1	129	263	398				
TOTAL		<i>64.4</i>	<i>4.9</i>	<i>26,979</i>	<i>28,380</i>	<i>29,780</i>	<i>166</i>	<i>41</i>	<i>18</i>	
CL:	68.1 %	COEFF		NET CUFT FT/ACRE			# OF PLOTS REQ.		INF. POP.	
SD:	1.0	VAR.%	S.E.%	LOW	AVG	HIGH	5	10	15	
W HMLK		97.8	7.5	2,769	2,994	3,218				
RCDR OG		138.8	10.6	2,026	2,267	2,508				
S SPRUCE		174.3	13.4	1,224	1,413	1,601				
HMLK SG		584.3	44.8	96	174	252				
SPRC SG		671.6	51.5	34	69	105				
TOTAL		<i>52.6</i>	<i>4.0</i>	<i>6,638</i>	<i>6,916</i>	<i>7,195</i>	<i>110</i>	<i>28</i>	<i>12</i>	

ADNR-DOF Sort Guidelines

Southeast Alaska

(3 pages)

ADNR-DOF Old Growth Sort Guidelines for Southeast Alaska

Sort Code/ Symbol	Description	Min. Length	Min. Diameter	Max Diameter
<u>SPRUCE AND HEMLOCK LOGS</u>				
HI/E	High Grade Sort Clean appearing #2 and better. Reasonably straight, with clear cuttings. #2 saw 18"-23" should be of prime quality. Maximum twist 2" per foot, Max. defect 15%.	12'	18"	
RD/R	Red Sort Good appearing #3 saw or better. Knot spacing very important with 4' of clear cuttings between knots on 50% of log. Max deductions 35%.	12"	18"	
SH/B	Shop Sort Should have clear cutting in one Quadrant minimum. Total deductions not more than 50%.	12'	24"	
JS/J	Japan Sort Round clean #2 and better quality, reasonably straight with no hooked butt or sap. Max defect 25%.	12'	17"	
KS/K	Korea Sort #3 or better, no rough tops. Maximum deduction 35%. Relatively good sawlog.	12'	12"	
DO/D	Domestic Sort Veneer or sawlog quality. Maximum defect 35%. #4 sawlog and better.	12'	6"	
59/U	Pulp Sort Min. 50% net utility scale. Won't fit into domestic sort due to quality or size.	12'	6"	
<u>RED CEDAR LOGS</u>				
RC/L	Shake & Shingle Suitable to produce 4' blocks for shakes or 16" blocks for shingles. Larger logs that aren't saw quality.	12'	20"	
RC/M	Medium Sawlog Good appearing #3 saw or better, Green round sawable logs and high quality slabs. Max defect 50%	12'	12"	
RC/C	Small Sawlogs	12'	6"	

Small sawlog type. Preferred lengths 24', 31' and 37'. No excessive sweep or twist. Max. defect 25%. Sound, tight knots.

RC/X	Camp Run Domestic Sawlog	12'	6"
	High defect or not fitting M & C sort specs.		

YELLOW CEDAR LOGS

YC/Y	All Saw Logs	12'	6"
	Camp run sort. Grade determines quality. No excessive sweep or twist. Must be suitable for sawlogs. Blue stain is permissible. 1/3 sound scribner volume.		

ADNR-DOF Second Growth Sort Guidelines for Southeast Alaska

Sort Code/ Symbol	Description	Min. Length	Min. Diameter	Max Diameter
<u>SPRUCE AND HEMLOCK LOGS</u>				
OV/V	Oversize #2 and better sawlog.	24'	20"	
ST/S	Standard #2 and better sawlog.	24'	13"	20"
GA/G	Gang Generally a #3 sawlog. 24' log must be ≥ 8" Dia.	24'	8"	13"
CS/N	Chip and Saw #3 sawlog. 36' only allowed length. No Bark seems.	36'	6"	8"
* V/S/G	No sap rot. No included bark seems. Buck off excessive defect, swell, hook, and sweep. Maximum defect 33%. Preferred lengths: 24', 32', 36', 38'.			
AC/A	<u>Alder Logs</u> All Saw Logs Camp run sort. #3 sawlog or better. No excessive sweep or crook. 1/3 sound scribner volume.	24'	8"	

Edna Bay Parlay One Timber Sale Prospectus

Attachment C (Miscellaneous)

None

Attachment D (Forms)

Bid and Deposit Form
(one page)

**DEPARTMENT OF NATURAL RESOURCES
DIVISION OF FORESTRY**

BID AND DEPOSIT FOR ADVERTISED TIMBER

Subject to the provisions below, the following bid is submitted for the timber to be removed from the
Vallenar Bay Timber Sale. Sale No. SSE - 1345K

SPECIES	PRODUCT	ESTIMATE VOLUME	UNIT OF MEASURE	MINIMUM UNIT PRICE	BID UNIT PRICE	TOTAL PRICE BID
STATE Young Growth Sitka Spruce	Sawlogs	43	MBF	\$ 36.00		
STATE Young Growth Western Hemlock	Sawlogs	112	MBF	\$ 2.00		
STATE Old Growth Sitka Spruce	Sawlogs	1,236	MBF	\$ 360.00		
STATE Old Growth Western Hemlock	Sawlogs	1,680	MBF	\$ 2.00		
STATE Western Red Cedar	Sawlogs	1,285	MBF	\$ 360.00		
STATE All Species Utility and Non-merchantable Sawlogs Scaled	Utility	408	Net+Net MBF	\$ 1.00		

GRAND TOTAL BID: \$

Minimum Acceptable Total Bid = \$913,100.00 USD

* MBF= One Thousand Board Feet Scribner Net Scale.

THE BIDDER AGREES:

1. At the time of bidding, if bidding as an agent for an individual, partnership, corporation, or other legally established firm, to submit a letter of authorization creating such agency to the Selling Agent.
2. To, within 30 days of award of sale, execute a contract of sale and furnish a satisfactory performance bond.
3. To furnish satisfactory evidence of financial and legal competence to perform the obligations of the contract. (Business Questionnaire and Form AD-1048)
4. That the bid deposit may be retained by the State as liquidated damages, if the sale is not completed as specified in the published notice of sale.
5. That the bid deposit of the successful bidder shall, upon execution of the contract, be credited, as a stumpage deposit to the amount due the State for stumpage as required by the contract of sale.
6. That, if the contract of sale is terminated due to failure of the purchaser to comply with the terms of the contract or the "Timber Sale Regulations", any unused stumpage deposit may be retained by the State as liquidated damages.

It is understood that a bid of less than the advertised price for any species will invalidate this bid as a whole, and that bids will be evaluated on the basis of total return to the State for sawlogs of Sitka Spruce, Hemlock, Red Cedar, AK Yellow Cedar.

The bidder transmits herewith a _____ for 5% of the Grand Total Bid in the sum of _____ (certified check, money order, cashier's check) dollars (\$ _____) payable to the Alaska Department of Revenue, as required by the published notice of sale.

Name of Bidder

Date

By, Signature

Address

Title

THIS SPACE FOR STATE USE ONLY

This bid was opened and accepted as a qualified bid on _____ at _____ by _____
 (Date) (Time)

 (Name) (Title)

If not accepted, explain:

Edna Bay Parlay One Timber Sale Prospectus

Attachment E
Sample Contract