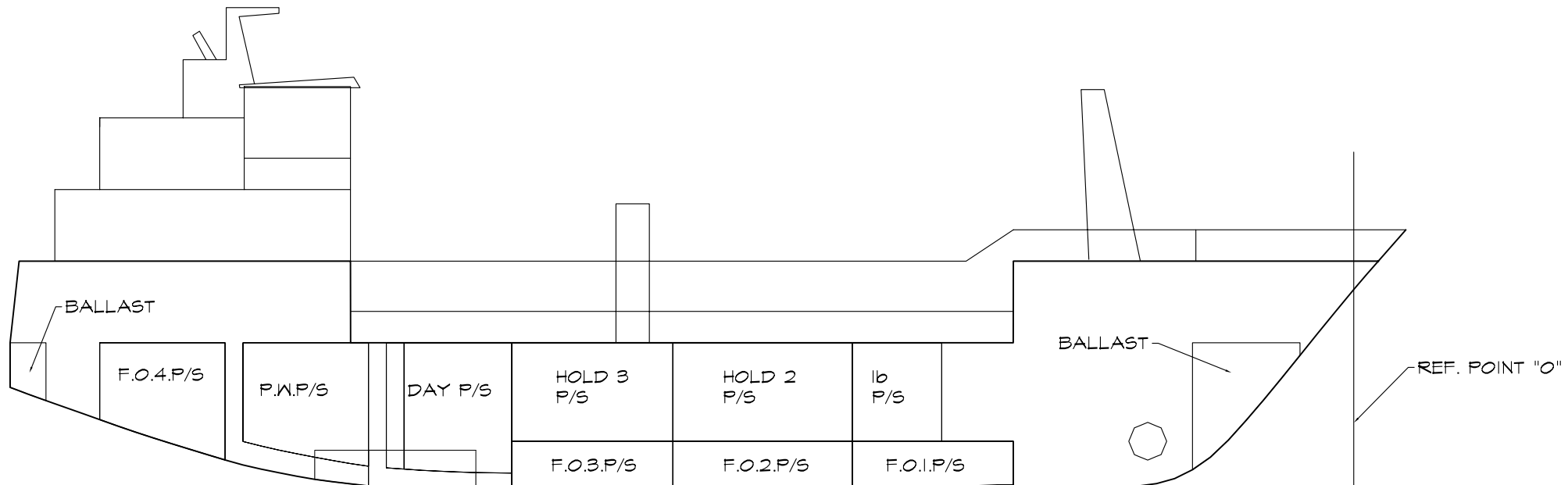
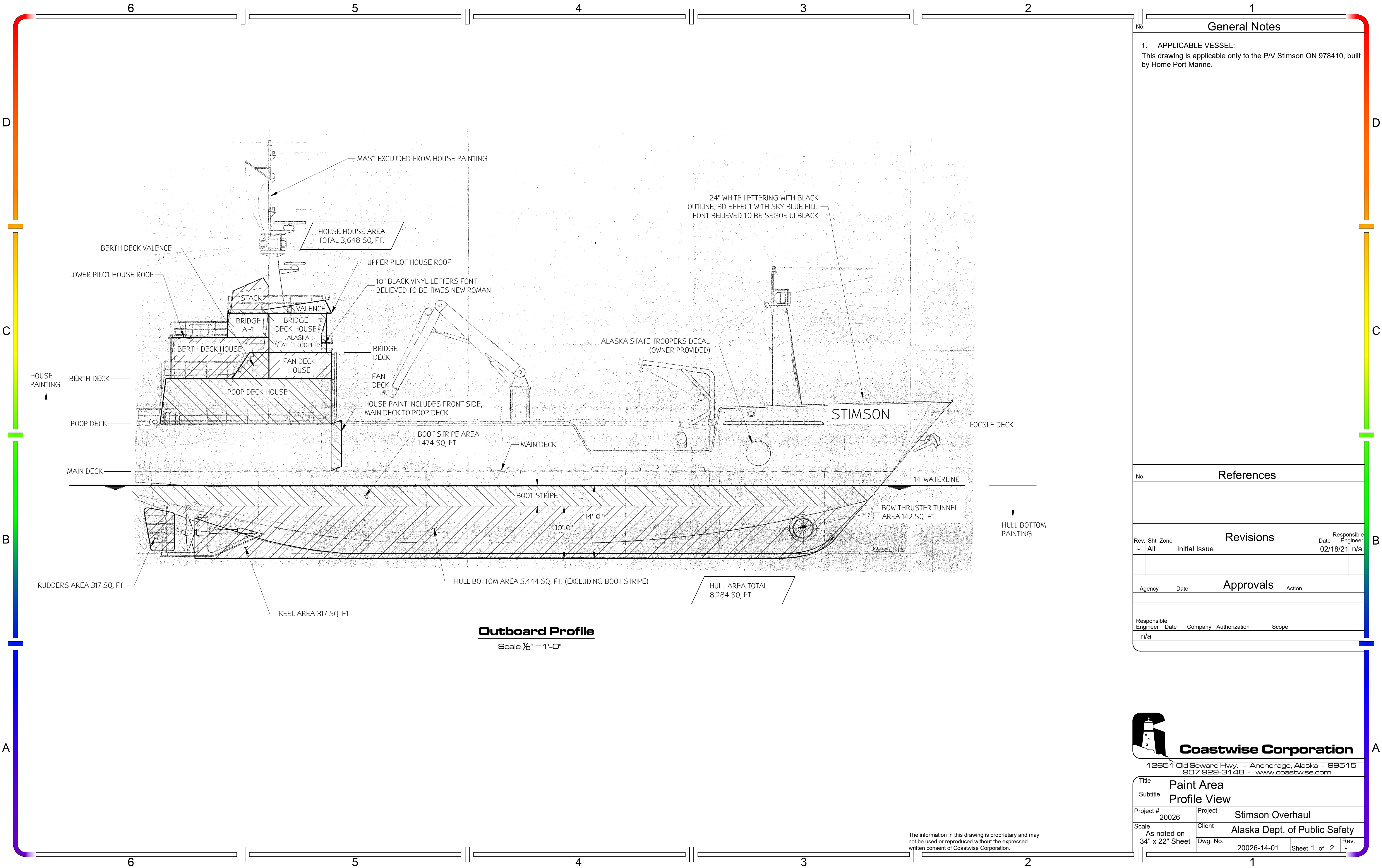
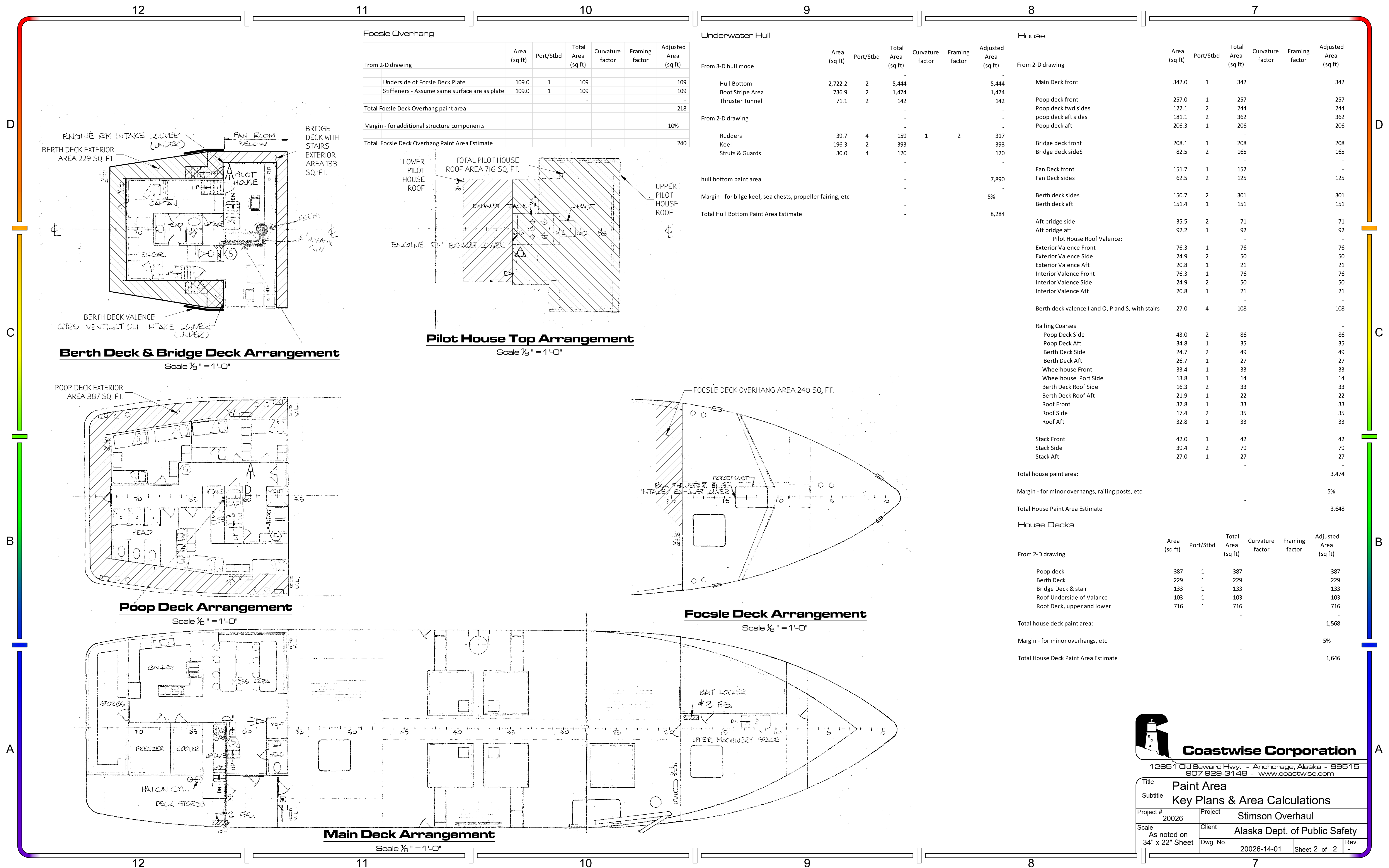


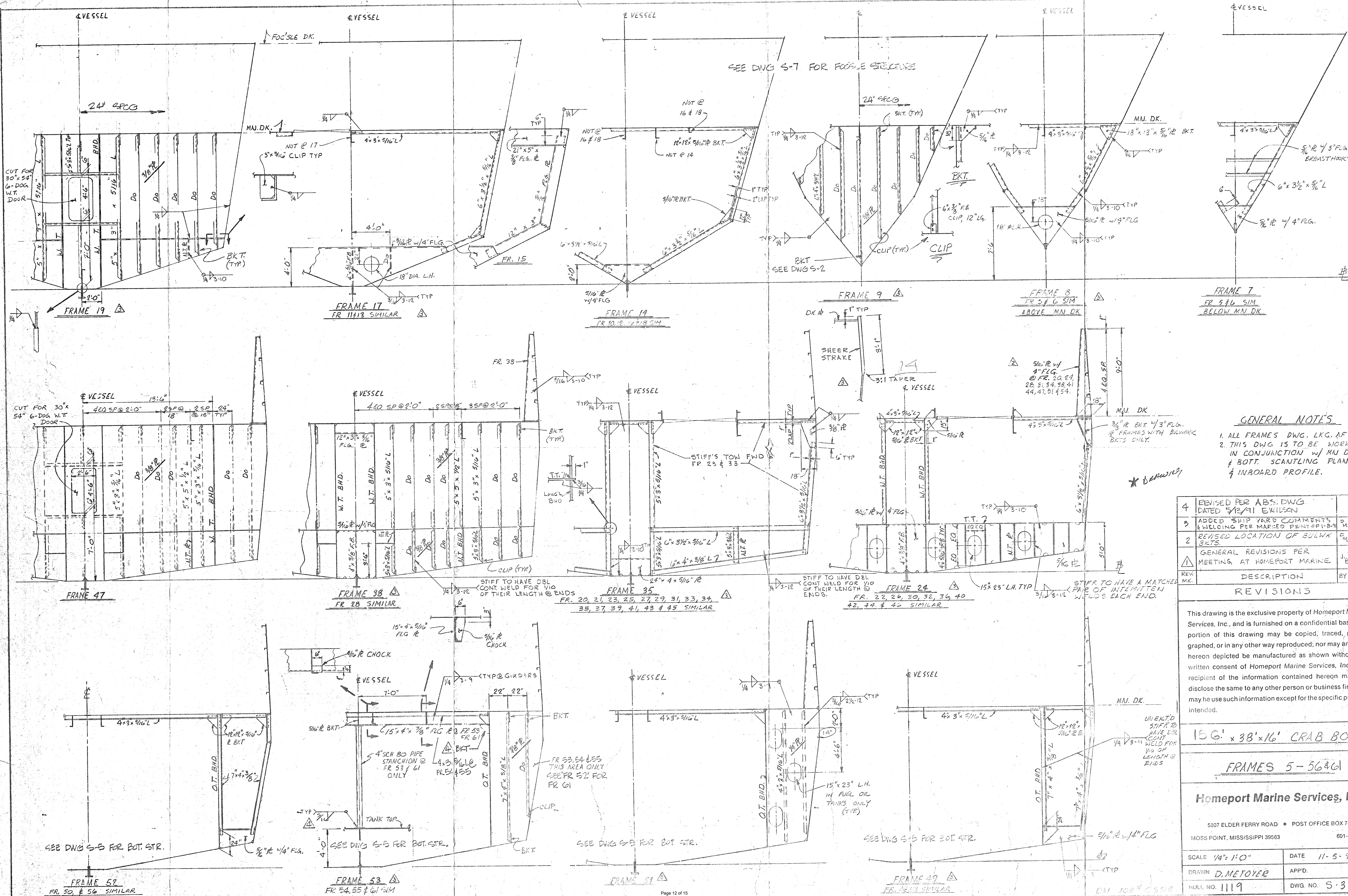
PLAN VIEW



PROFILE VIEW







GENERAL NOTES

1. ALL FRAMES DWG. LKG. AFT.
2. THIS DWG IS TO BE WORKED IN CONJUNCTION W/ M/DK & BOT. SCANTLING PLAN & INBOARD PROFILE.

REV. NO.	DESCRIPTION	BY	DATE
4	REVISED PER ABS. DWG. DATED 5/12/91 EMILSON	EM	5/12/91
3	ADDED SHIP YARD COMMENTS & WELDING PER MARVED PERFORM-18	EM	11/2/91
2	REVISED LOCATION OF BULKW. BKTS.	EM	11/2/91
1	GENERAL REVISIONS PER MEETING AT HOMEPORT MARINE	J.B.	12/2/90

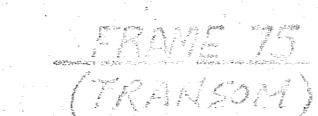
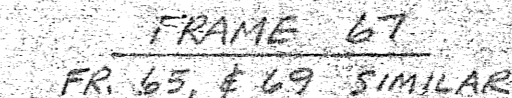
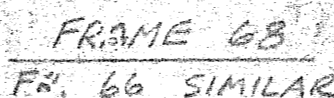
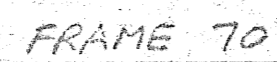
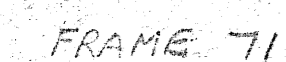
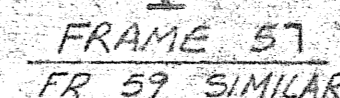
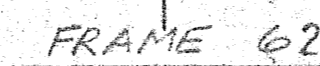
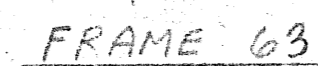
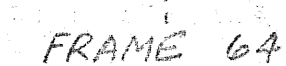
REVISIONS

This drawing is the exclusive property of Homeport Marine Services, Inc., and is furnished on a confidential basis. No portion of this drawing may be copied, traced, photographed, or in any other way reproduced; nor may any item hereon depicted be manufactured as shown without the written consent of Homeport Marine Services, Inc. The recipient of the information contained hereon may not disclose the same to any other person or business firm; nor may he use such information except for the specific purpose intended.

156' x 38' x 16' CRAB BOAT

FRAMES 5-56 & 61

Homeport Marine Services, Inc.	
5807 ELDER FERRY ROAD • POST OFFICE BOX 745 MOSS POINT, MISSISSIPPI 39563 601-475-5553	
SCALE 1/4" = 1'-0"	DATE 11-5-90
DRAWN D. METOYER	APP'D.
HULL NO. 1119	DWG. NO. S-3



1. ALL FRAMES SHOWN LOOKING AFT.
2. WORK THIS DWG. IN CONJUNCTION WITH MAIN DK. & BOTTOM SCANTLING AND INBOARD PROFILE.

REVISIONS		BY	DATE	APPROV
REV./NO	DESCRIPTION			
1	ADDED WELDING	DM	1/21/96	
2	REVISED STRUCTURE IN 1ST PASSAGEWAY FR 06, 08 & 03. WAS DP FLR @ 9th A.B.L.	B.W.	2/5/91	

This drawing is the exclusive property of Homeport Marine Services, Inc., and is furnished on a confidential basis. No portion of this drawing may be copied, traced, photographed, or in any other way reproduced; nor may any item hereon depicted be manufactured as shown without the written consent of Homeport Marine Services, Inc.. The recipient of the information contained hereon may not disclose the same to any other person or business firm; nor may he use such information except for the specific purpose intended.

156' x 38' x 16' CRAB BOAT

FRAMES 57 - 73

Homeport Marine Services, Inc.

5807 ELDER FERRY ROAD • POST OFFICE BOX 745

MOSS POINT, MISSISSIPPI 39503

601-475-5538

SCALE	$\frac{1}{4}'' = 1'-0''$	DATE	11-5-90
-------	--------------------------	------	---------

DATE 11-5-90

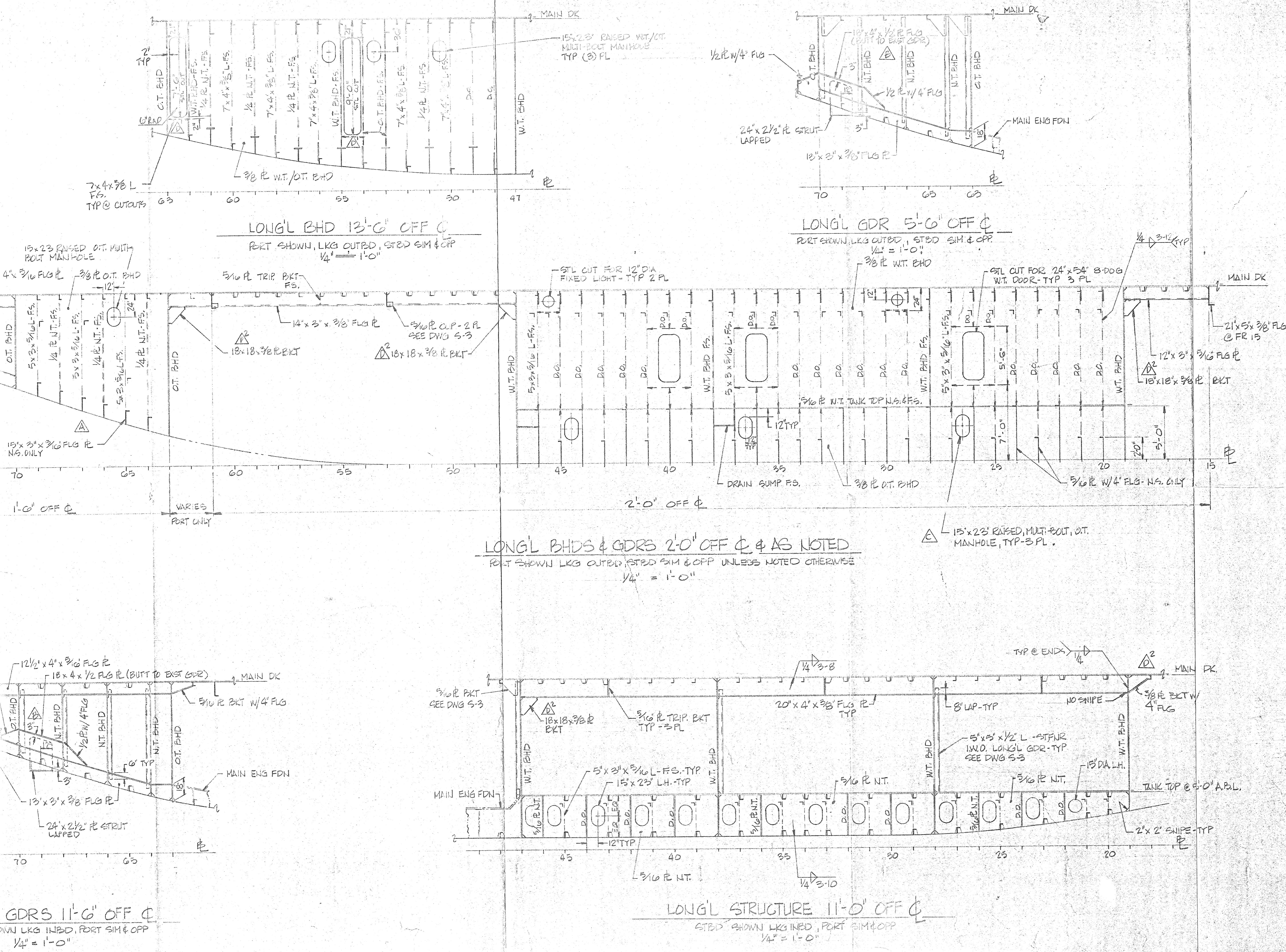
DRAWN	J. BEACH	APP'D.
-------	----------	--------

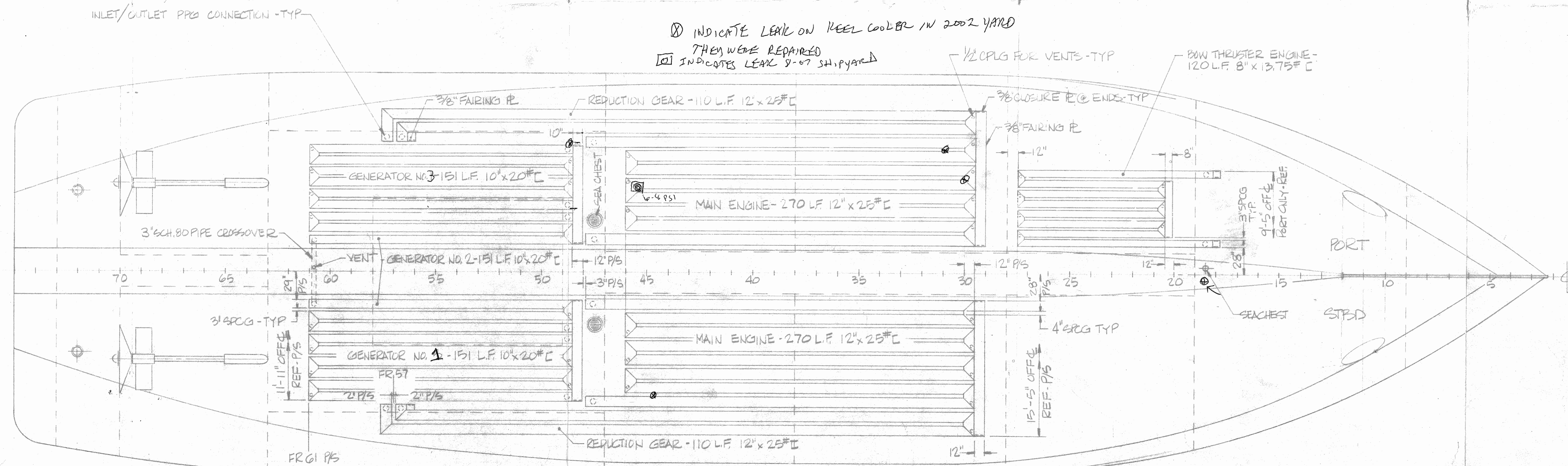
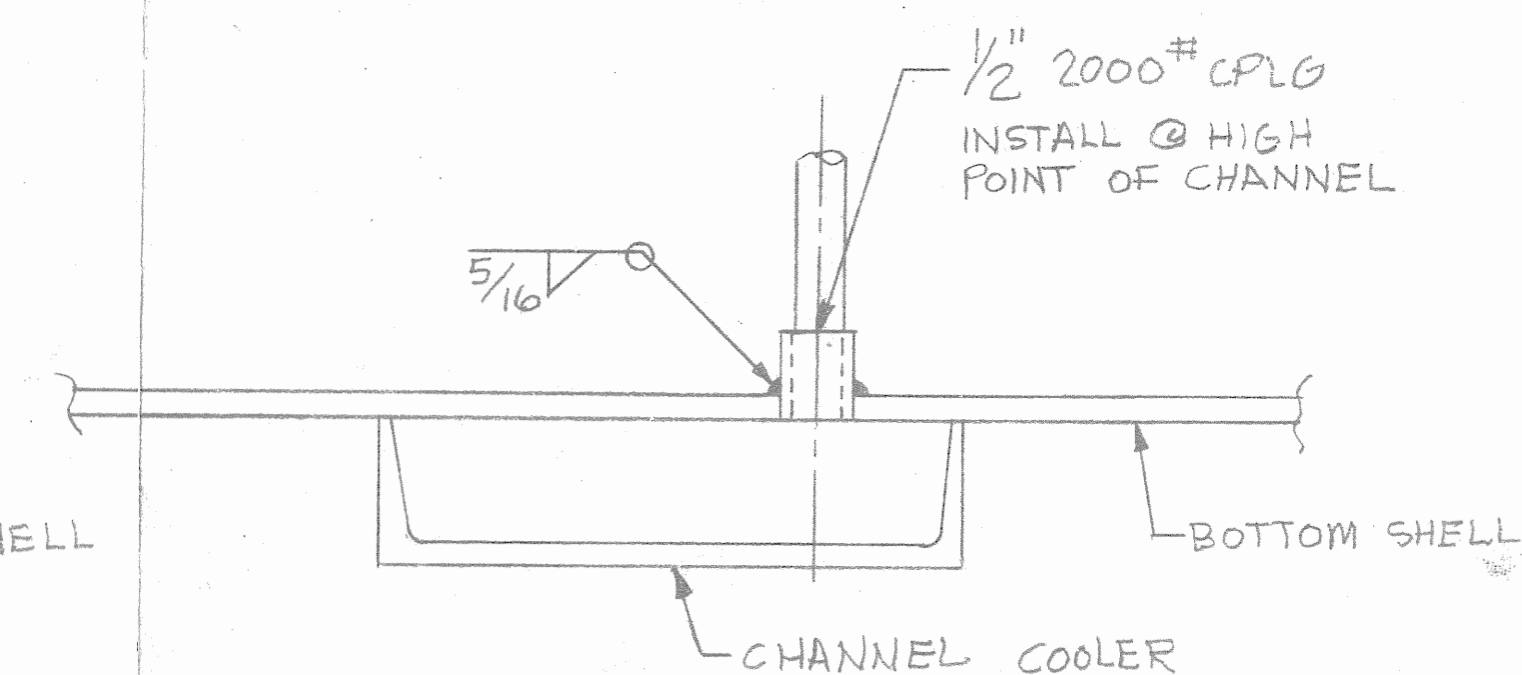
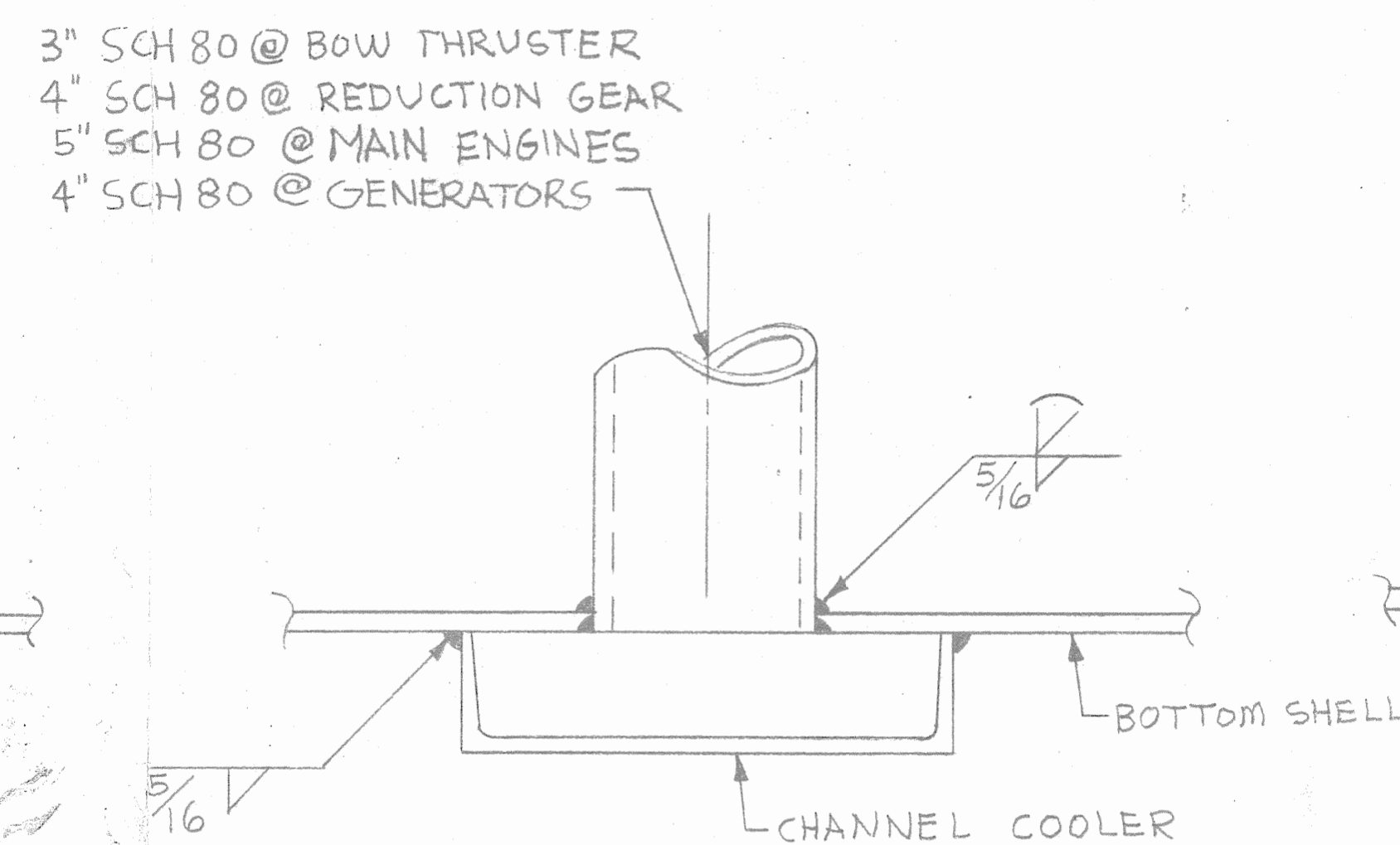
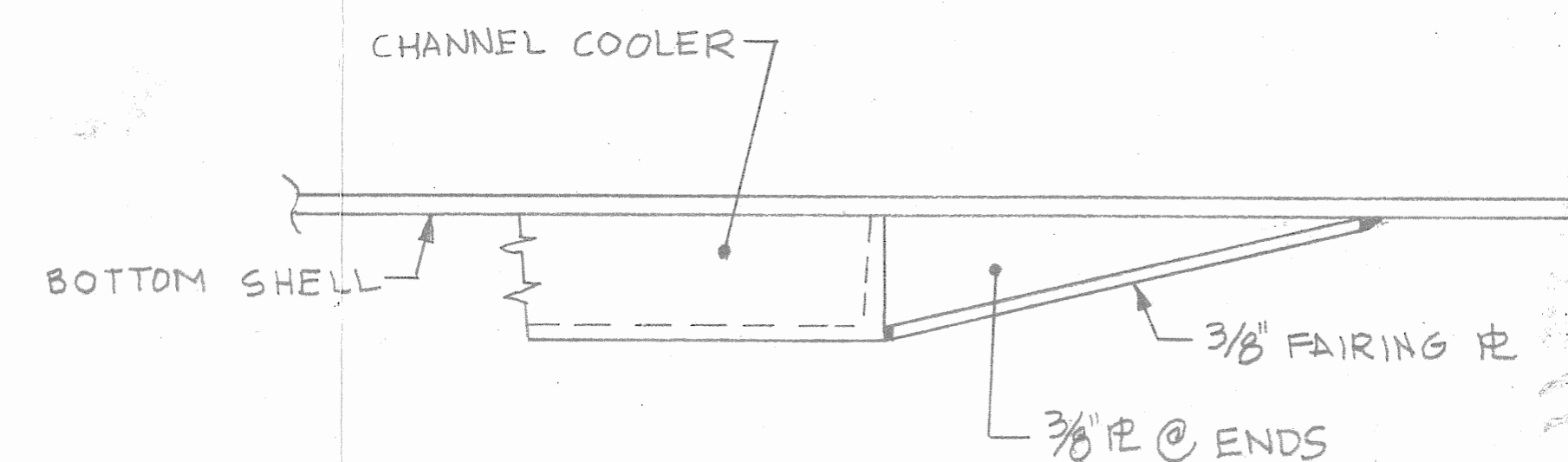
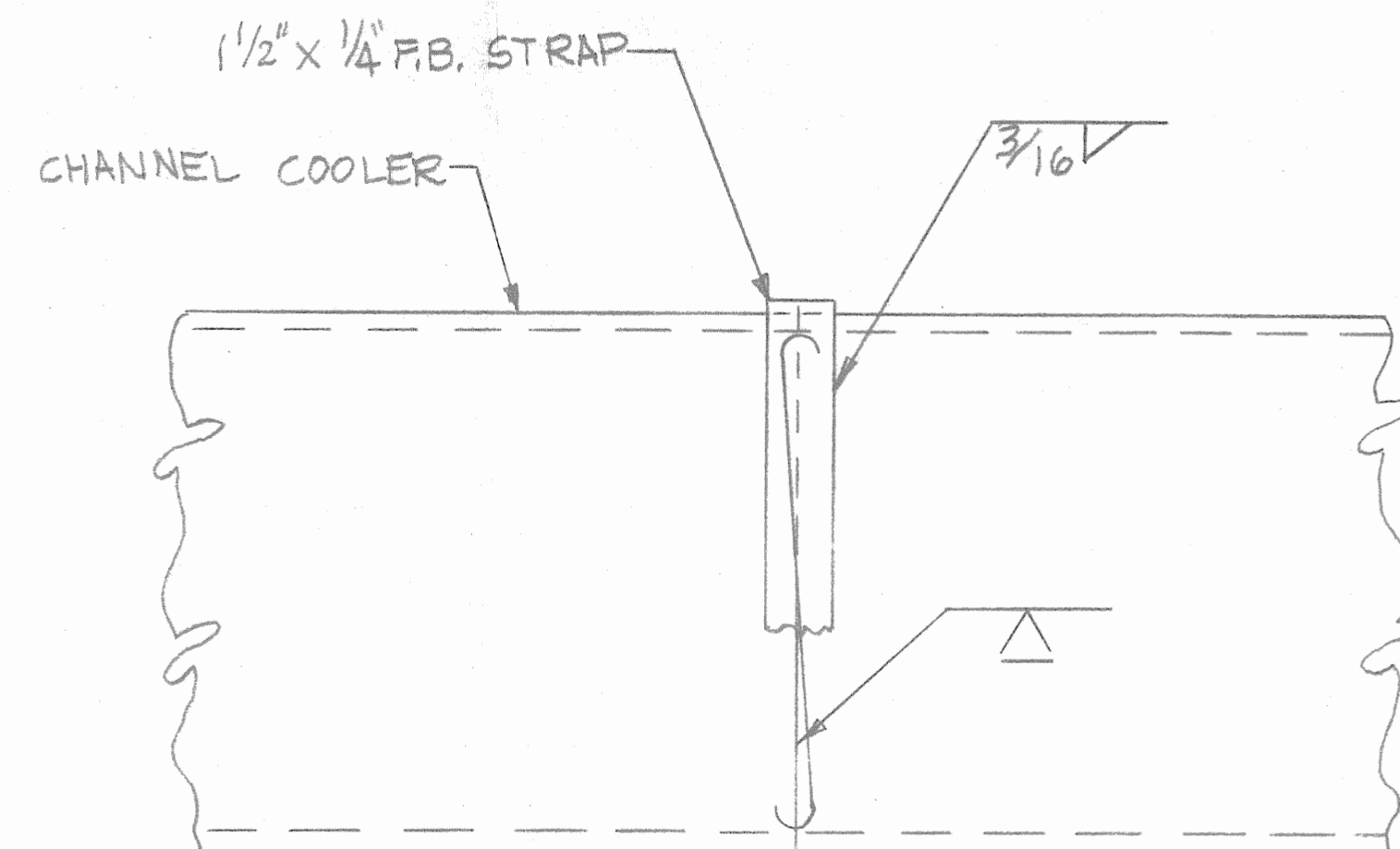
APP'D:

HULL NO. 1119	DWG. NO. 3-4
---------------	--------------

DWG. NO. S-4

REVISION	
A	REVISED STRUCTURE IN AFT PASSENGERWAY FR 66, 68 & 64 WAS DR. FLOOR @ 9'-0" A.B.L. ADDED MANHOLE IN LONG BHD @ FR 65. E. WILSON 2/28/91
B	ADDED BACK-UP STRUCTURE FOR STRUT LEGS. E. WILSON 3/5/91
C	ADD MANHOLES FOR ACCESS TO INVERT BOTTOM TKS FR 19-47. E. WILSON 3/22/91
D	1. LINED VOID SPACES IN WINGTK BHD PER OWNERS REQUEST. 2. REVISED PER ABS LETTER DATED 5/13/91. E. WILSON 5/27/91





⑧ INDICATE LEAK ON KEEL COOLER IN 2002 YARD
THEY WERE REPAIRED
⑨ INDICATES LEAK 8-07 SH. PYARD ✓ 1/2 CPLG F

7 1/2 CPLG FOR VENTS-TYP

BOW THRUSTER ENGINE -
120 L.F. 8" x 13.75" C

This drawing is the exclusive property of *Homeport Marine Services, Inc.*, and is furnished on a confidential basis. No portion of this drawing may be copied, traced, photographed, or in any other way reproduced; nor may any item herein depicted be manufactured as shown without the written consent of *Homeport Marine Services, Inc.*. The recipient of the information contained herein may not disclose the same to any other person or business firm; nor may he use such information except for the specific purpose intended.

156' x 38' x 16' CRAB BOAT

KEEL COOLER DETAILS

Homeport Marine Services, Inc.

5807 ELDER FERRY ROAD • POST OFFICE BOX 745
MOSS POINT, MISSISSIPPI 39563 601-475-5533

SCALE NOTED	DATE 2-26-91
DRAWN E. WILSON	APP'D.
HULL NO. 119	DWG. NO. S-5