

STATE OF ALASKA

Department of Public Safety
Division of Administrative Services



P/V Stimson Shipyard Repairs

RFP 2022-1200-4961

Amendment One

September 20, 2021

This amendment is being issued to answer vendor questions and provide references.

A handwritten signature in blue ink that reads "Kelly Pahlau".

Kelly Pahlau

Procurement Specialist III

Phone: (907) 269-8493

Email: kelly.pahlau@alaska.gov

Questions submitted by potential offerors and answers from the state

Question 1: I did not see the references for the ITB. Please direct us to the following:

3.1 DRY DOCKING

3.1.1 References

3A) Homeport Marine Services Dwg. D-1 Rev A Docking Plan & Anode Locations

3B) Historical Foss Docking Plan. Accuracy unknown, provided for general information only.

4.1 REMOVE, REFURBISH, AND REINSTALL PROPELLERS

4.1.1 References

4A) Homeport Marine Services dwg M-1 Shafting Details

4.2 REMOVE, INSPECT, AND RE-INSTALL PROPELLER SHAFTS

4.2.1 References

4A) Homeport Marine Services dwg M-1 Shafting Details

4B) Homeport Marine Services dwg M-2 Rudder Details

4.3 RUDDER BEARING WEAR-DOWN MEASUREMENTS AND PACKING REPLACEMENT

4.3.1 References

4B) Homeport Marine Services dwg M-2 Rudder Details

4.4 OILY WATER AND WASTE OIL REMOVAL

4.4.1 References

4C) Tank Arrangement

4.8 INSPECTION AND REPLACEMENT OF HULL ZINC'S

4.8.1 References

3A) Homeport Marine Service Dwg D-1 Rev A Docking Plan & Anode Locations

5.1.1 Underwater Hull - Power Wash and Paint – Definite Bid Item

REFERENCES

05A) Coastwise Dwg. 20024-14-01 Rev – Paint Area Calculation

6.0 BALLAST AND FRESH WATER TANK INSPECTIONS

6.1 REFERENCES

6A) Homeport Marine Services dwg S-3 Frames 5-56&61

6B) Homeport Marine Services dwg S-4 Frames 57-73

6C) Homeport Marine Services dwg S-6 Longitudinal BHDs & Girders

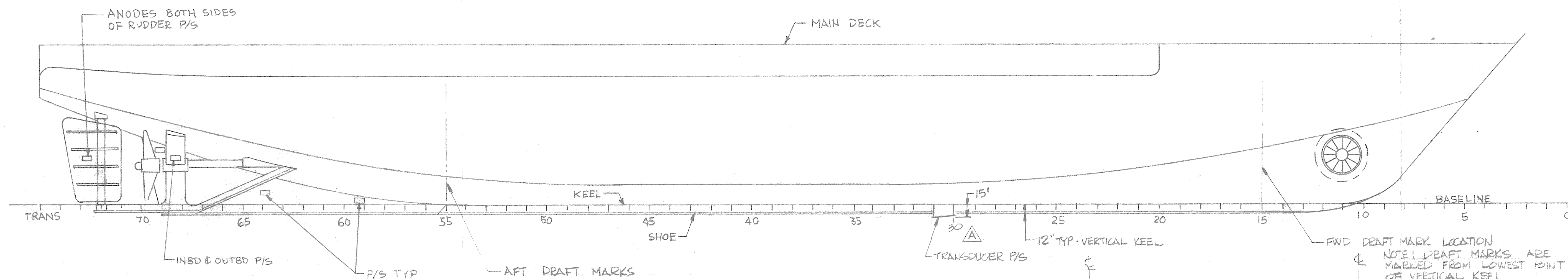
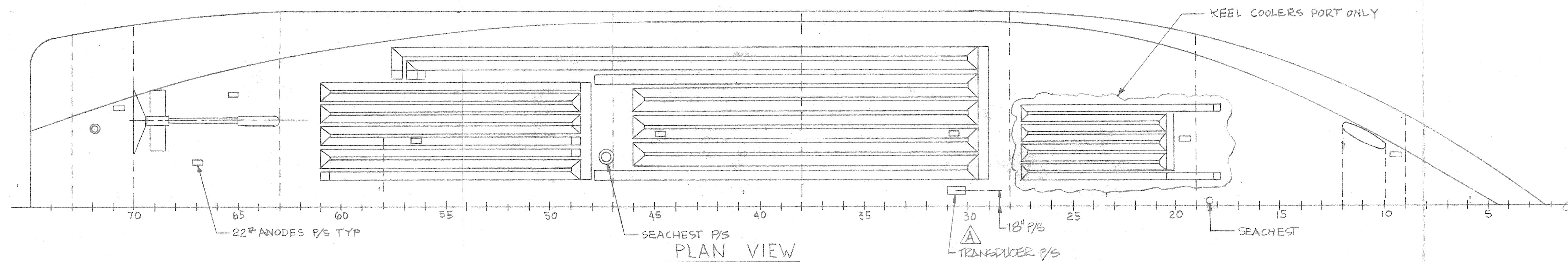
4C) Tank Arrangement

8.1 REFERENCES

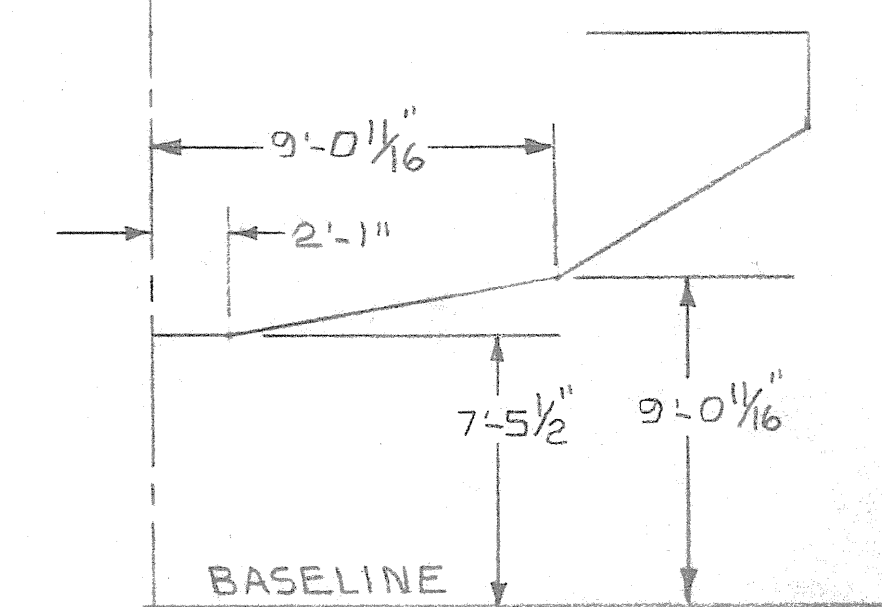
8A) Homeport Marine Services dwg S-8 Keel Cooler Details.

Any other references and/or photos that may be available that are pertinent to this ITB

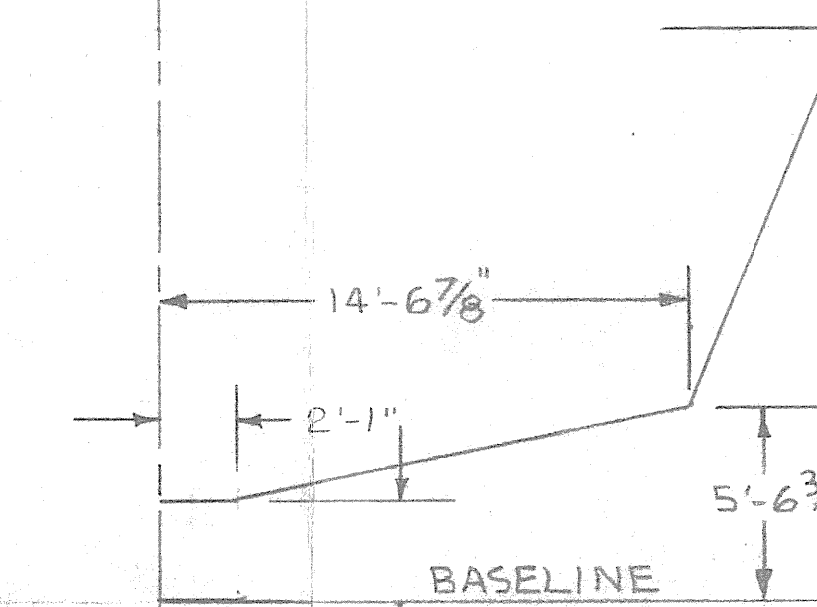
Answer: See the attached Reference documents.



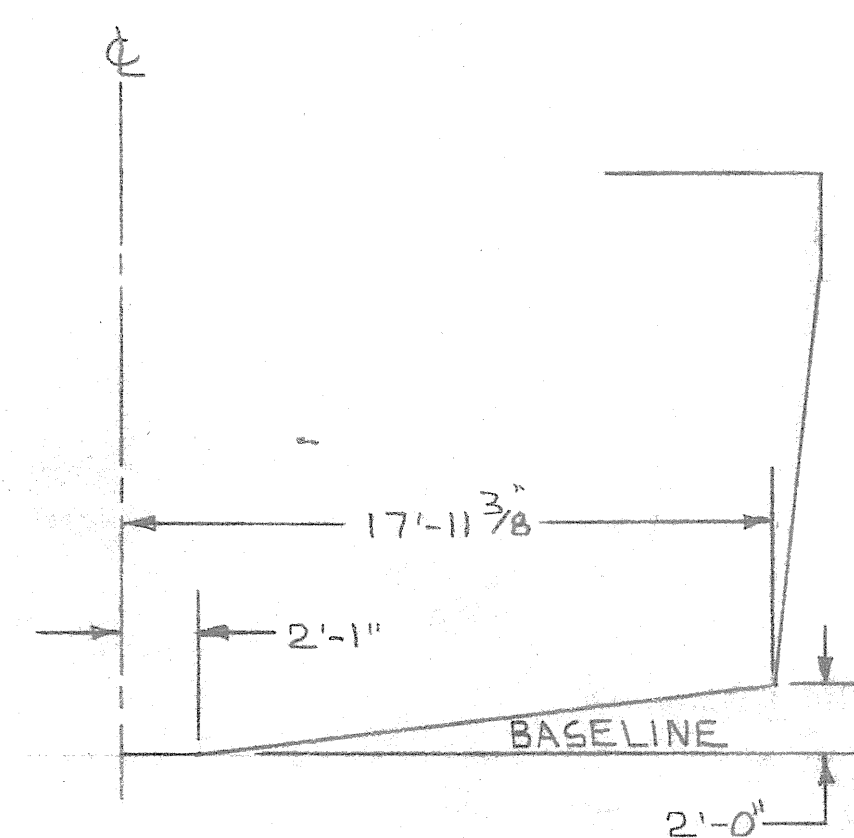
ELEVATION



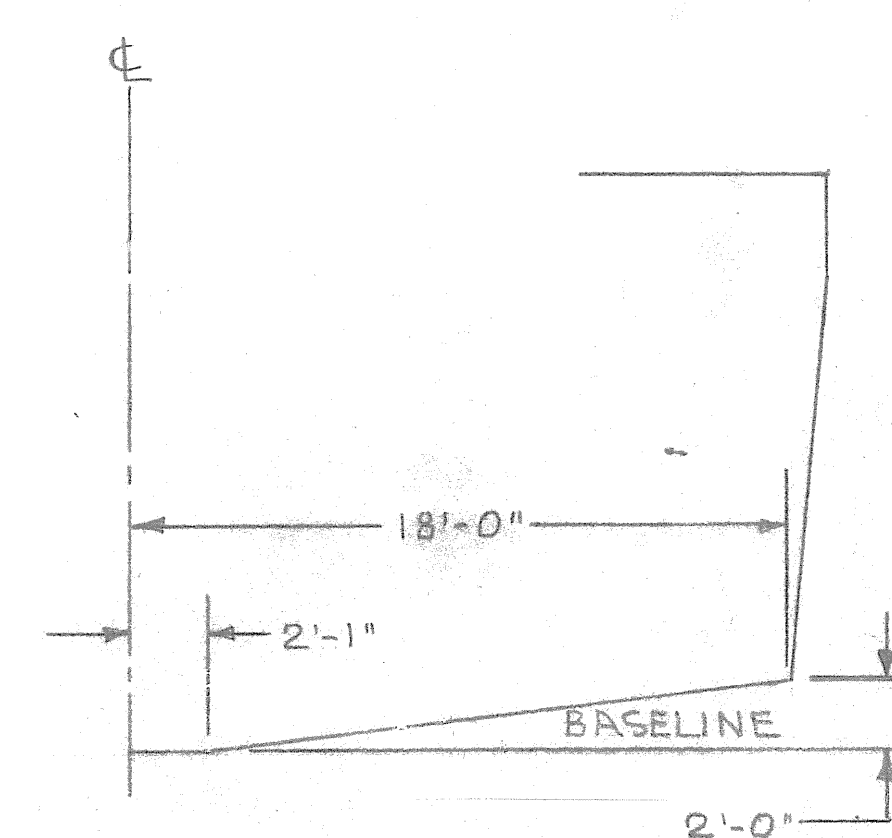
FR 70



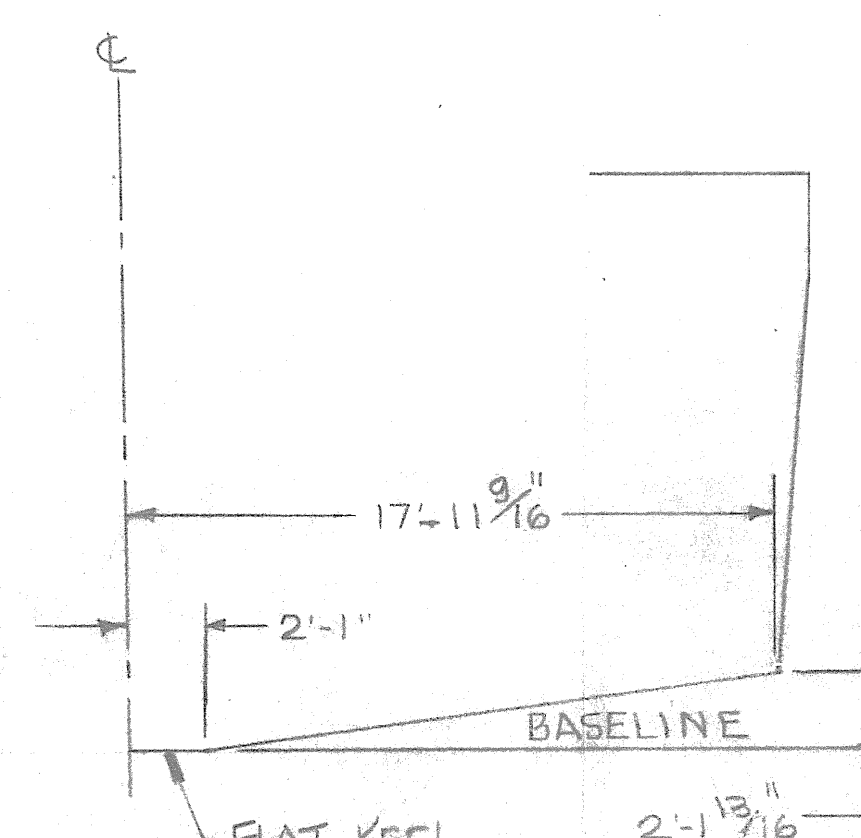
FR 63



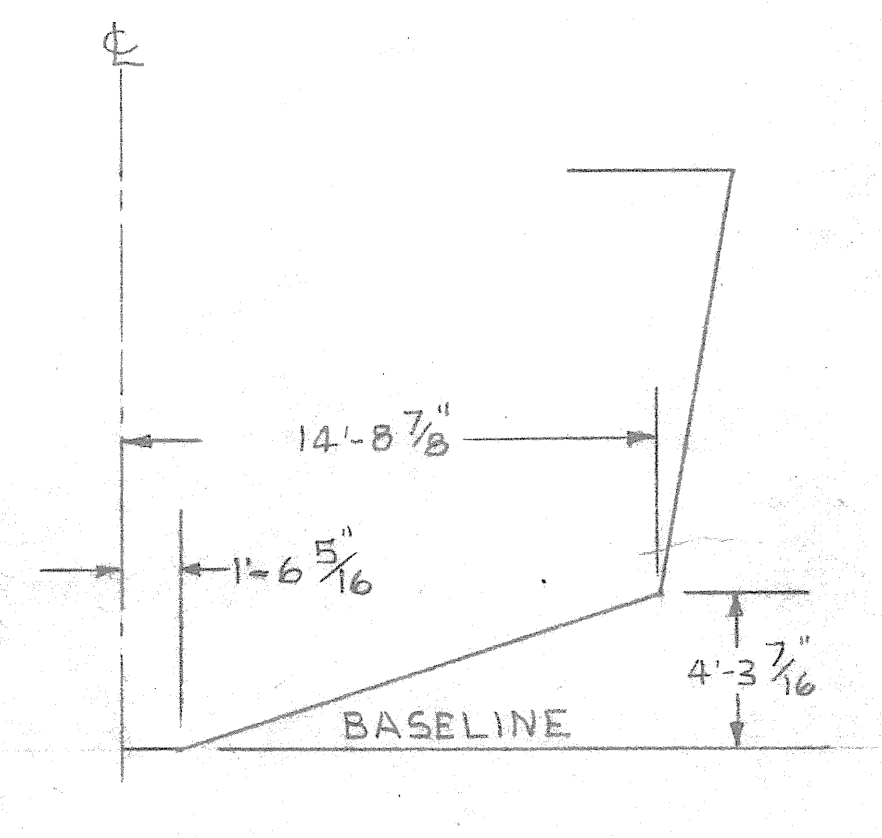
FR 47



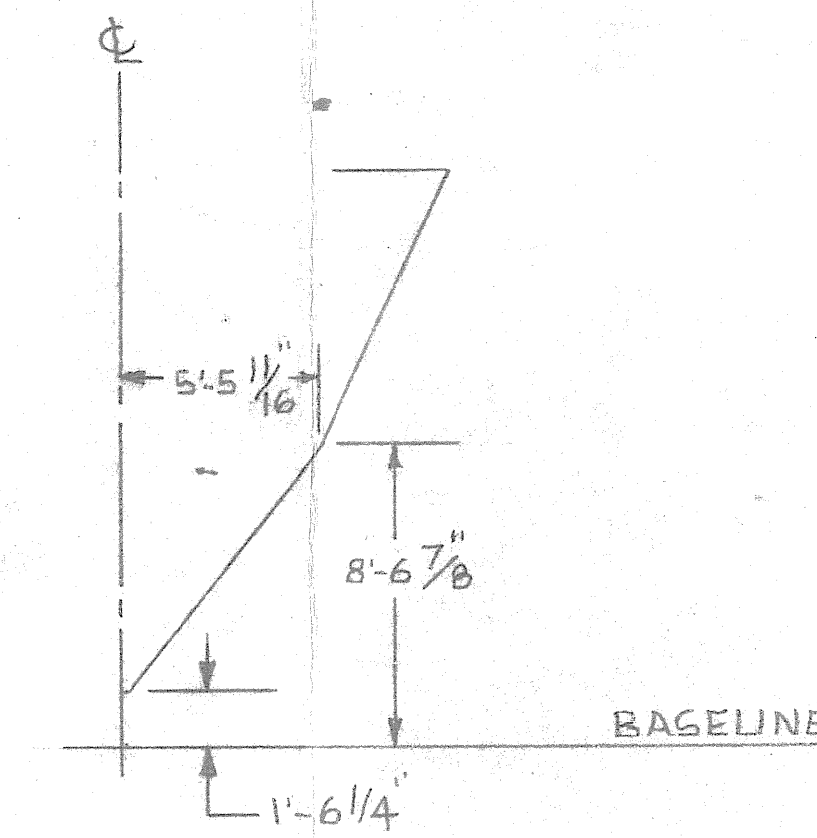
FR 38



FR 28



FR 19



FR 9

A RELOCATED TRANSDUCERS TO SUIT AS-BUILT CONDITION. LEADING EDGE WAS @ FR 33. E.WILSON 9-17-91

REVISIONS

This drawing is the exclusive property of Homeport Marine Services, Inc., and is furnished on a confidential basis. No portion of this drawing may be copied, traced, photographed, or in any other way reproduced; nor may any item hereon depicted be manufactured as shown without the written consent of Homeport Marine Services, Inc. The recipient of the information contained hereon may not disclose the same to any other person or business firm; nor may he use such information except for the specific purpose intended.

156' X 38' X 16" CRAB BOAT

DOCKING PLAN &
ANODE LOCATIONS

Homeport Marine Services, Inc.

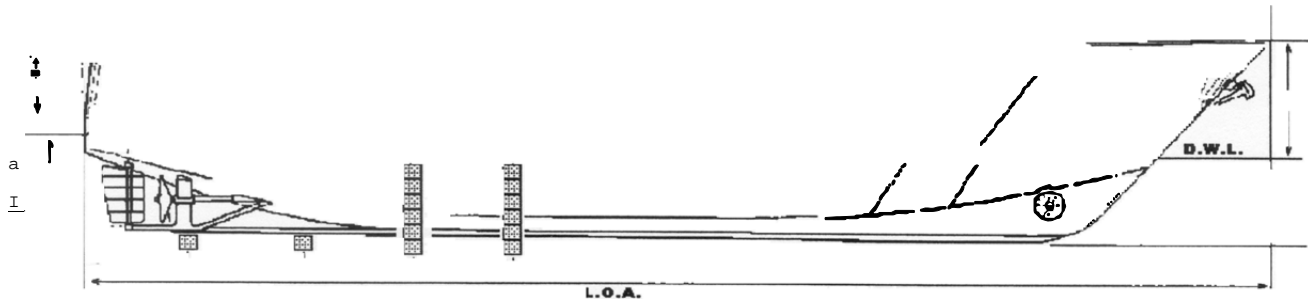
5807 ELDER FERRY ROAD • POST OFFICE BOX 745
MOSS POINT, MISSISSIPPI 39563 601-475-5633

SCALE 3/16" = 1'-0"	DATE 4-19-91
DRAWN E.R. O'BRIEN	APP'D.
HULL NO. 1119	DWG. NO. D=1

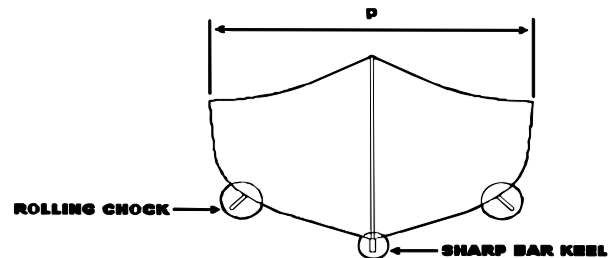
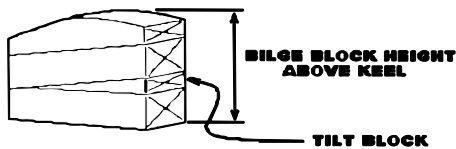
VESSEL: PIV STIMSON (previously the FIV PINNACLE)

Dated: 7-28-92

Reprinted: FOSS Shipyard Dock Number 2DD



NOT TO SCALE



DIMENSIONS

OIM "B":	11'-8"
OIM "C":	14'
OIM "D":	10'
OIM "E":	12'
OIM "F":	28'
OIM "G":	12'
OIM "H":	156'
OIM "K":	6'-1"
OIM "M":	16'-5"
OIM "N":	14'
OIM "O":	
OIM "P":	38'

BILGE BLOCK HEIGHTS

B	D	
1	10	24" INC 6TB-R
2	9	24" INC 6TB-R
3	8	24" INC 6TB-R
4	7	24" INC 6TB-R
5	6	24" INC 6TB-R

PRESET ALL BILGE BLOCKS
15' FROM CENTERLINE OF
KEEL TO OUTBOARD OF
BILGE BLOCK PULL IN WHEN
BOAT LANDS

NOTES:

ROLLING CHOCKS:

Yes, 36' to 85' forward of the stern
22" lower than hull starboard side and
37' to 96' and
95' to 114' forward of stern
22" lower than hull port side.

DROP SHOE:

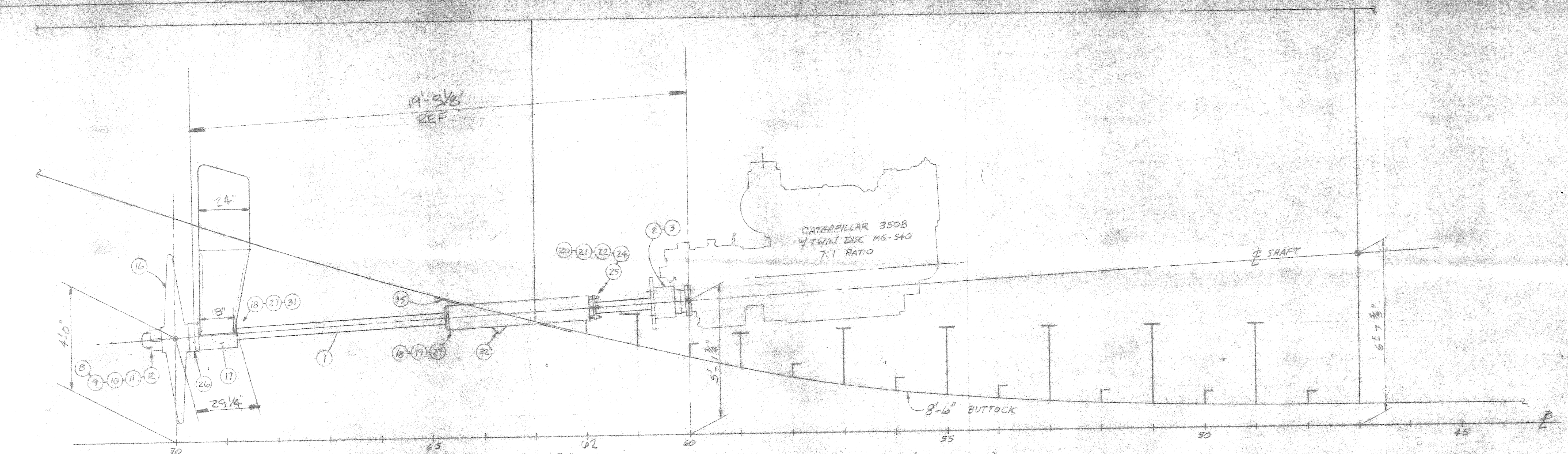
No

KEEL COOLERS:

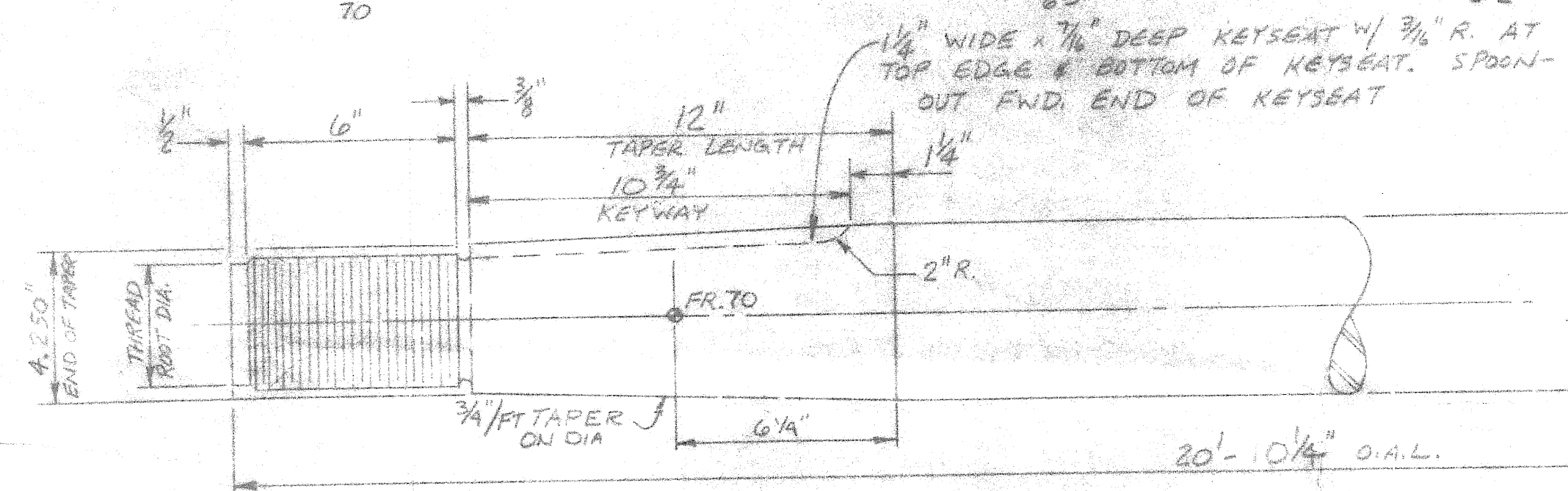
Rolling Chocks located 5" inboard of
chine and extends 22" down.

TRANSDUCER:

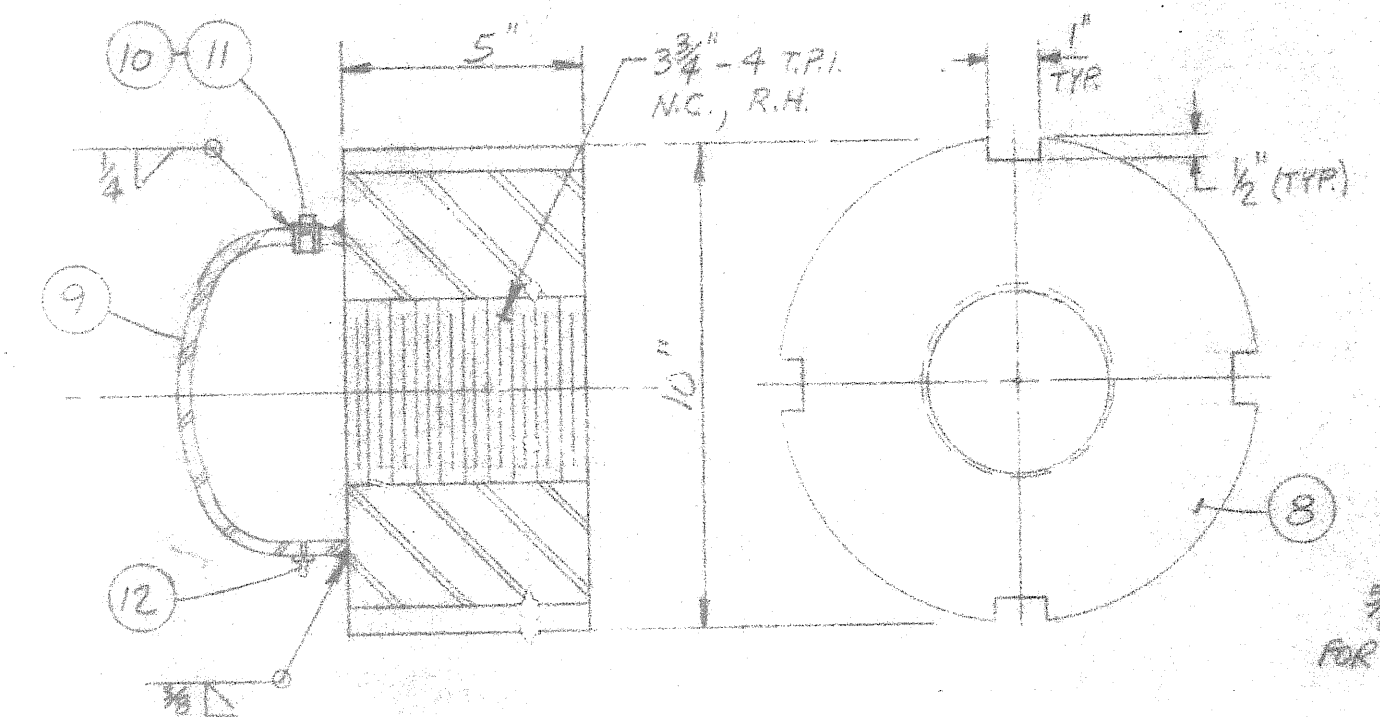
Yes, 84' to 92' forward of stern
5" lower than keel on keel no keel block



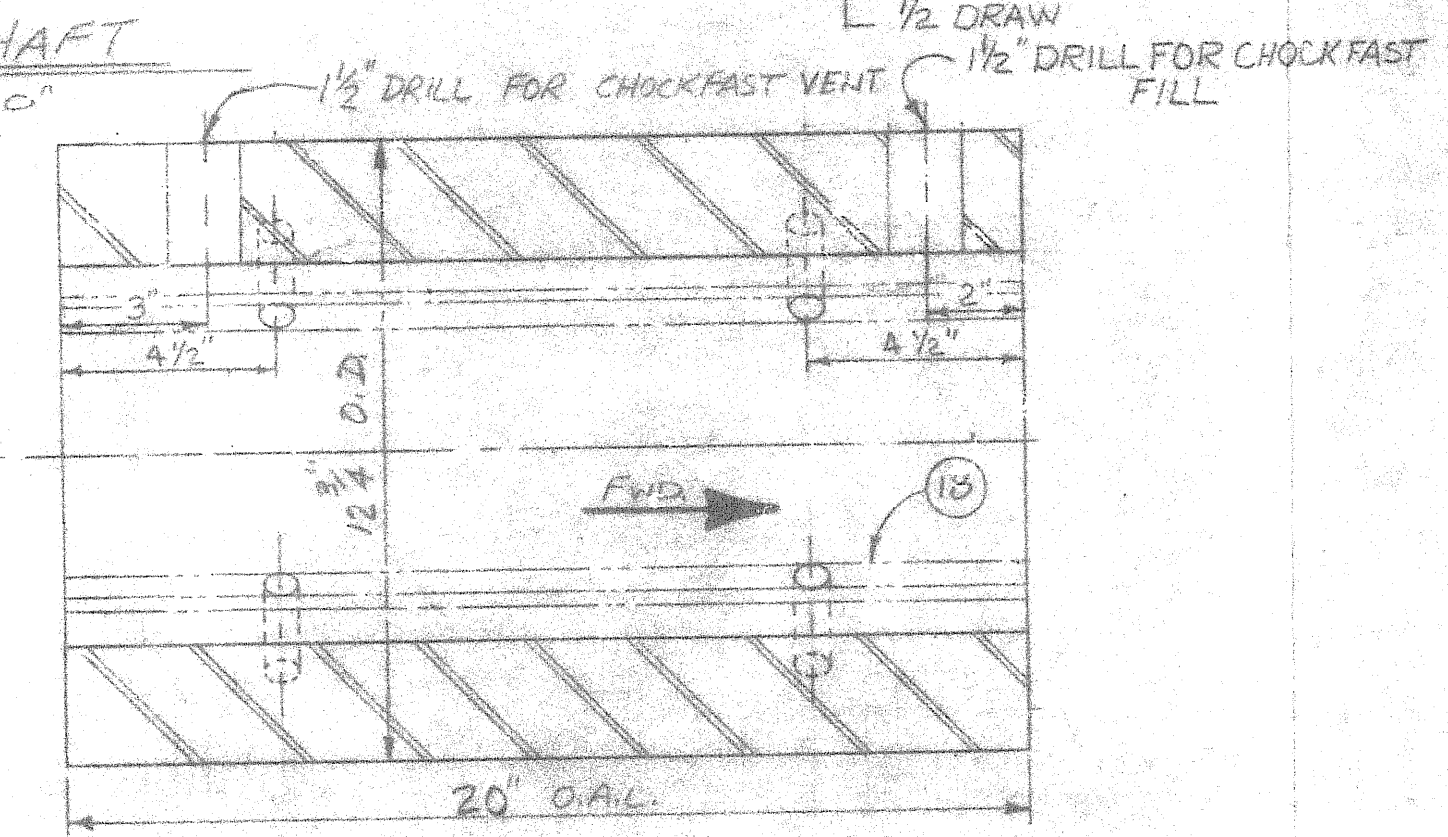
ELEVATION @ SHAFT ϕ (8'-6" OFF ϕ)
SCALE: 1/2" = 1'-0"



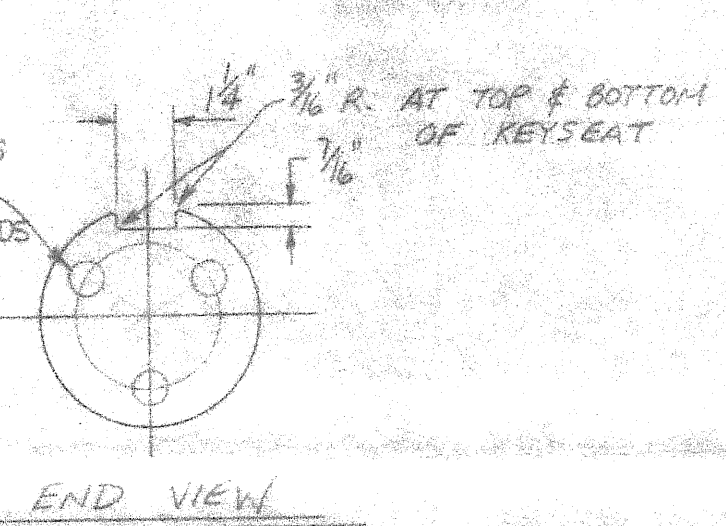
1 PROPPELLER SHAFT
SCALE: 3" = 1'-0"



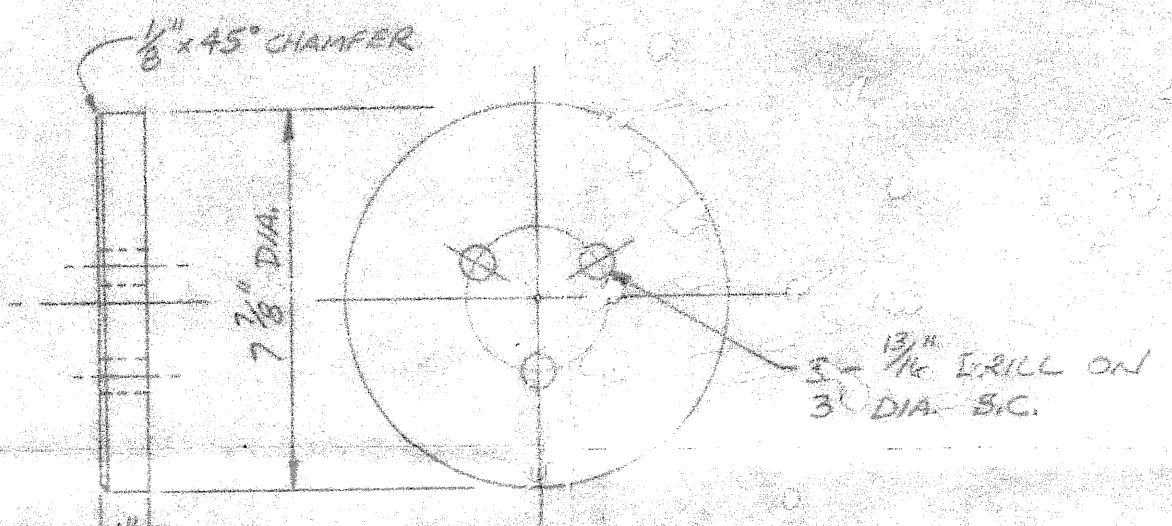
PROPELLER NUT DETAIL
SCALE: 3" = 1'-0"



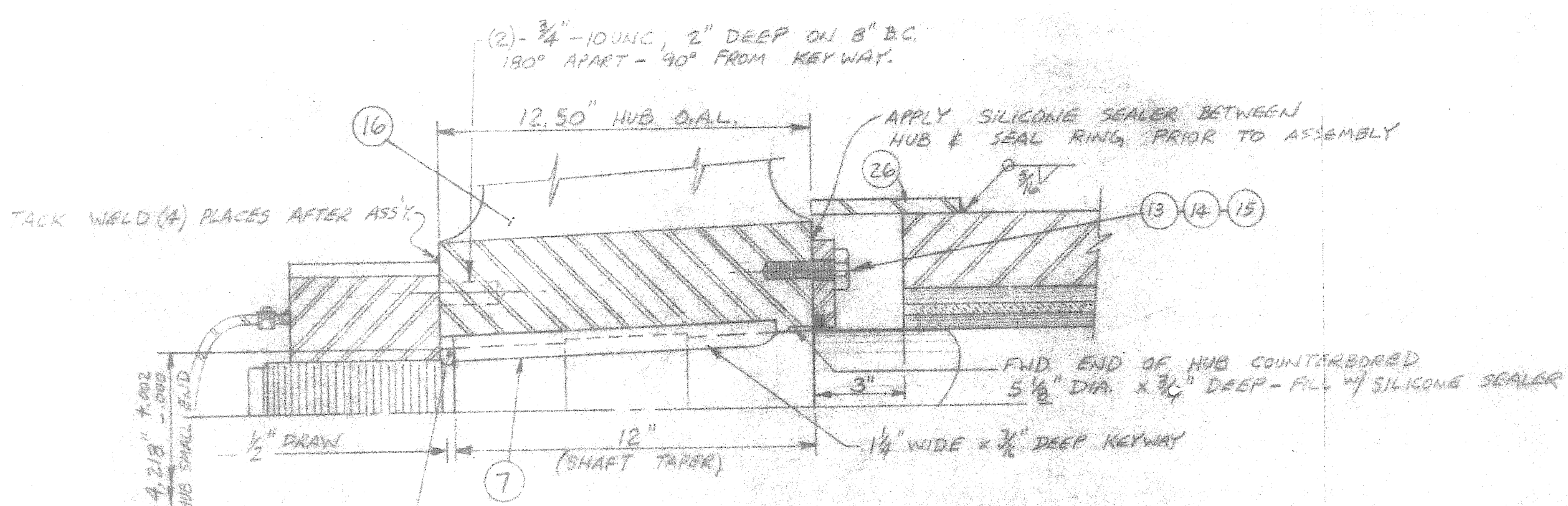
17 STRUT BARREL
SCALE: 3" = 1'-0"



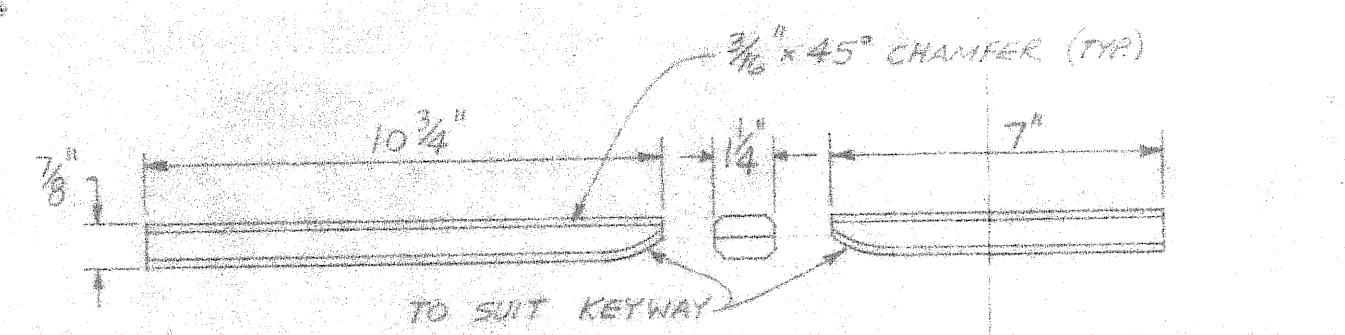
END VIEW



5 THRUST PLATE
SCALE: 3" = 1'-0"



PROPELLER HUB HALF-SECTION
SCALE: 3" = 1'-0"



7 PROPELLER KEY
4 COUPLING KEY
SCALE: 3" = 1'-0"

This drawing is the exclusive property of Homeport Marine Services, Inc. and is furnished on a confidential basis. No portion of this drawing may be copied, traced, photographed, or in any other way reproduced, nor may any item hereon depicted be manufactured as shown without the written consent of Homeport Marine Services, Inc. The recipient of the information contained hereon may not disclose the same to any other person or business firm, nor may he use such information except for the specific purpose intended.

152'-9" x 38'-11 1/2" CRAB BOAT

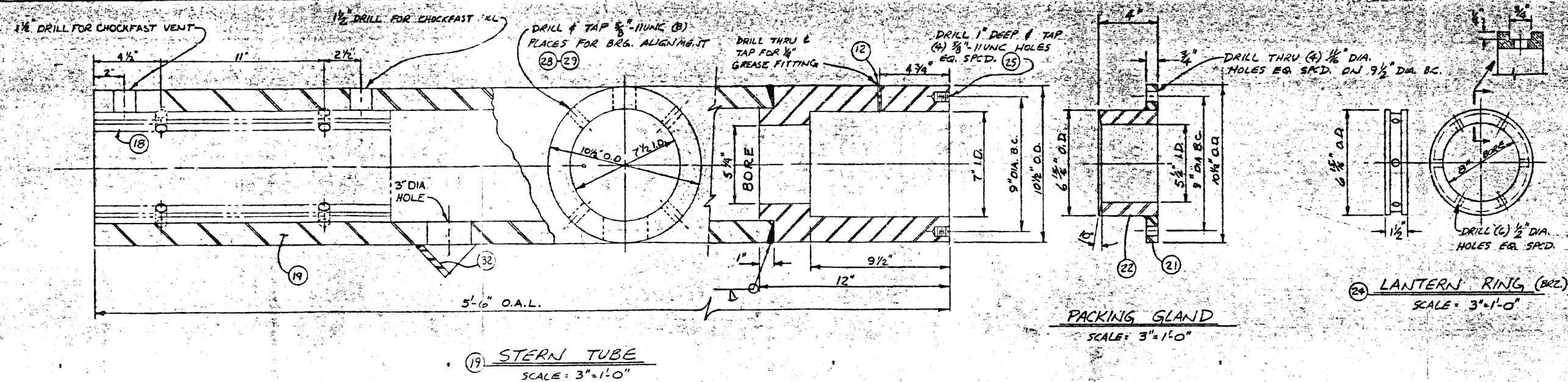
SHAFTING DETAILS

Homeport Marine Services, Inc.

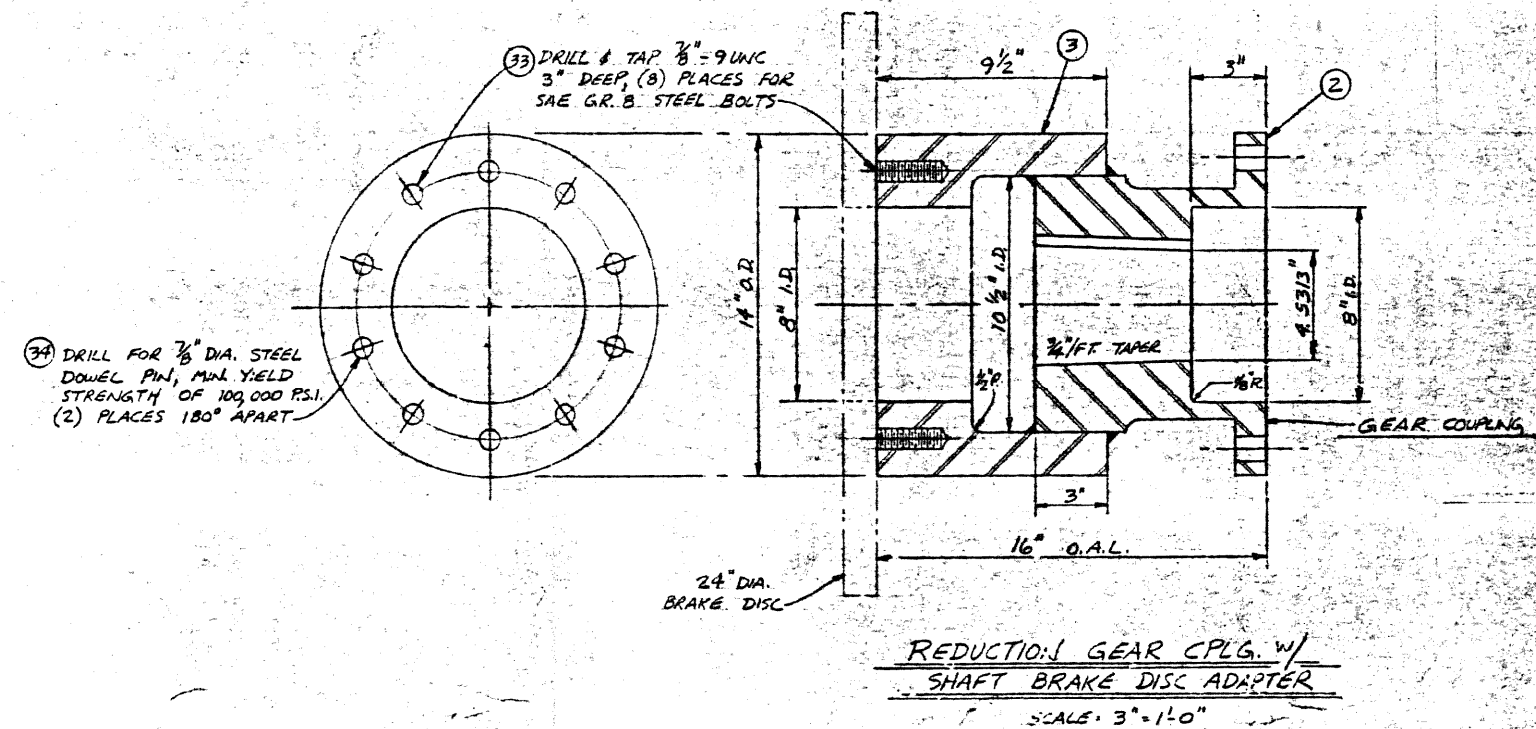
5887 ELDER KERRY ROAD • POST OFFICE BOX 745
MOSS POINT, MISSISSIPPI 38553 601-475-5553

SCALE: 1/2" = 3'-0"	DATE: 2-20-91
DRAWN: J. BEACH	APP'D:
HULL NO. 1119	DWG. NO. 1119-1

DAI J-28 # C-3512



BILL OF MATERIALS			
P.C.#	QTY.	DESCRIPTION	ASTM / ANSI
1	2	PROPELLER SHAFT, AQUAMET 17, S.S., 5" DIA. X 20'-9 1/4" O.A.L.	
2	2	COMPANION CPLG., (FURNISHED WITH GEAR)	
3	2	SHAFT BRAKE DISC ADAPTER, 14" O.D. X 8" I.D. X 7 1/2" LONG MECH. TUBING	A53 GR. B
4	2	COMPANION CPLG. KEY, 1 1/2" WIDE X 3/8" DEEP X 7" LONG A.B.S. KEYSTOCK	SAE GR. 2 STEEL
5	2	THRUST PLATE, 1" THICK STEEL PL. X 7 1/8" O.D.	A36
6	3	THRUST BOLTS, SAE GR. 5 STEEL, 3/8"-10 UNC X 2 1/2" LONG, FOR UTHWIRE	SAE GR. 5 STEEL
7	2	PROPELLER KEY, 1 1/2" WIDE X 3/8" DEEP X 10 1/2" LONG A.B.S. KEYSTOCK	SAE GR. 2 STEEL
8	2	PROPELLER NUT, 10" O.D. X 3 1/2" I.D. X 5" LONG MECH. TUBING	A53 GR. B
9	2	PIPE CAP, 6" SCH. 40 BW. BLK. STEEL	A234
10	2	HALF-COUPLING, 1/2"-3000# F.S. SCR'D. BLK.	A105
11	2	PIPE PLUG, 1/2"-300# SCR'D. M.I. BLK.	A191 GR. 1
12	4	GREASE FITTING, 1/2"-ALEMITS OR EQUAL	
13	2	PROPELLER HUB SEAL, O-RING (SUPPLIED W/ PROPELLER)	
14	2	PROPELLER HUB SEAL RING	
15	A/R	CAP SCREWS, HEX HD. S.S.	
16	2	PROPELLER, 78" X 60" MODIFIED PACIFIC (BIRD JOHNSON)	
17	2	STRUT BARREL, 12 3/4" O.D. X 7 1/4" I.D. X 21" O.A.L. MECH. TUBING	A53 GR. B
18	4	BEARING, JOHNSON CODE "FACT", STD. SLEEVE BEARING, 20" O.A.L.	
19	2	STERN TUBE, 11" O.D. X 8" I.D. X 5'-6" O.A.L. MECH. TUBING	A53 GR. B
20	2	PACKING GLAND FLG., 3/4" R X 11" O.D. X 7" I.D. STEEL	A36
21	2	PACKING GLAND BODY, 6 1/8" O.D. X 5 1/4" I.D. X 4" LONG MECH. TUBING	A53 GR. B
22	A/R	PACKING FLAX, 1" SQUARE	
23	2	LANTERN RING, 1 1/2" R X 6 13/16" O.D. X 8" I.D., BRONZE	B62
24	8	STUD BOLTS, STAINLESS STEEL 1/2" NUTS, 5/8"-11UNC X 6" LONG	
25	2	ROPE GUARD, 1/2" X 5" F.B. X 40" LONG, STEEL	A36
26	16	JACKING SCREWS, 5/8"-11UNC X 4" LONG HEX HD. BOLTS	
27	16	SET SCREWS, 5/8"-11UNC X 2 1/2" LONG (STERN TUBE)	
28	16	3" LONG (STRUT BARREL)	
29	2	WATER SCOOP, 6" SCH. 80 PIPE, BLK. SMLS. STL.	A53 GR. B
30	16	BOLTS SAE GR. 8 STEEL, 3/8"-9UNC X 3 1/2" LONG	
31	4	DOWEL PIN, STEEL, 1/8" DIA. X 4" LONG	
32	2	STERN TUBE DBLR. 1/2" R 5'-6" LONG X 3'-0" WIDE	A36



This drawing is the exclusive property of Homeport Marine Services, Inc., and is furnished on a confidential basis. No portion of this drawing may be copied, traced, photographed, or in any other way reproduced; nor may any item hereon depicted be manufactured as shown without the written consent of Homeport Marine Services, Inc. The recipient of the information contained hereon may not disclose the same to any other person or business firm, nor may he use such information except for the specific purpose intended.

152'-9" X 38'-16" CRAB BOAT

SHAFTING DETAILS

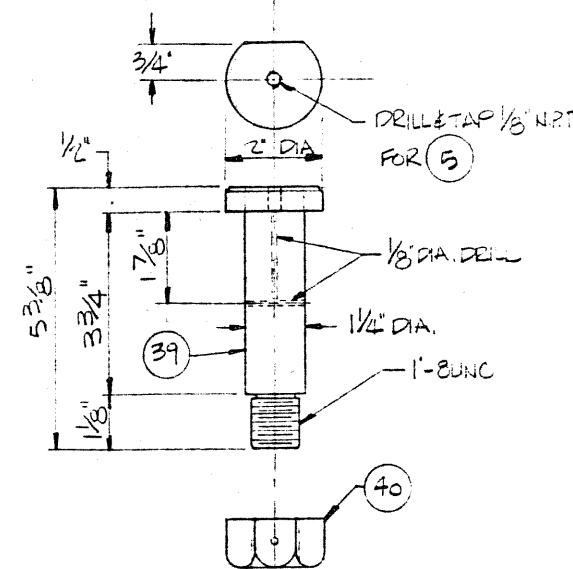
Homeport Marine Services, Inc.

801 ELDER FERRY ROAD • POST OFFICE BOX 16
MOORE POINT, MISSISSIPPI 39061

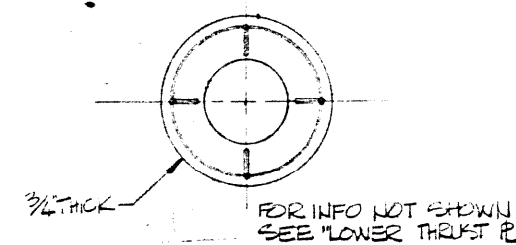
SCALE 3"=1'-0"	DATE 2-23-91
DRAWN J. BEACH	APPD.
PULL NO. 1119	DRW. NO. M-1242-2

LIST OF MATERIAL		
ITEM	QTY	DESCRIPTION
1	2	MECHANICAL TUBING, 14 ³ / ₈ " O.D. x 10 ³ / ₈ " I.D. x 30" LG.
2	2	1 ³ / ₈ " R STL, 20 ³ / ₈ " O.D. x 14 ³ / ₈ " I.D.
3	8	ALL THREAD ROD 3/4"-10 UNC x 6" LG. STL
4	16	HEX NUT 3/4"-10 UNC STL
5	12	1/8" N.P.T. ALEMITE STRAIGHT STYLE
6	12	SOCKET SET SCREW, 5/8"-11 UNC, CUP POINT, STL
7	12	HEX HD CAP SCREW, 3/8"-16 UNC, 1 1/4" LG, STL
8	2	5/16" R STL, 14 ³ / ₈ " O.D. x 10 ³ / ₄ " I.D.
9	2	STL TUBING 20 ³ / ₈ " O.D. x 9 9/16" I.D. x 4" LG
10	2	BRONZE 1 1/16" O.D. x 9 9/16" I.D. x 1/2" THICK
11	2	1" R STL 1 1/16" O.D. x 9 9/16" I.D.
12	2	MECHANICAL TUBING, 10" O.D. x 7" I.D. x 8" LG.
13	2	1" R STL
14	2	1/2" R STL
15	8	1 3/8" R STL
16	4	3/8" R STL
17	4	3/8" R STL
18	4	1" R STL
19	8	HEX HD BOLT 1 1/2" UNC x 4 1/4" LG. W/NUTS OR-5
20	2	STNLS STL KEY STOCK 1 1/2" x 1" x 6" LG
21	2	BRONZE BUSHING 1 3/4" O.D. x 1 3/8" I.D. x 1 3/4" LG.
22	2	BRONZE BUSHING 1 5/8" O.D. x 1 1/4" I.D. x 1 3/4" LG.
23	1	DRIFTER/CUTLESS RUBBER BZG CODE "INSET" 1 1/8" O.D. x 9 1/2" I.D. x 3 1/2" LG. CUT - (2) EA. 16" LG FOR NECK BZG.
24	2	C.R. STL STOCK ABS GR2 9" DIA. x 10 2 1/4" LG
25	2	9/16" R STL 8"-6" x 5"-6"
26	A/R	3/4" R STL
27	A/R	1/2" R STL
28	2	STL TUBING 10" O.D. x 6" I.D. x 6" LG
29	2	STL TUBING 11" O.D. x 8" I.D. x 6 1/2" LG
30	2	1" R STL 22" O.D. x 11" I.D.
31	6	1/2" R STL

LIST OF MATERIAL (CONTD.)		
ITEM	QTY	DESCRIPTION
32	2	BRONZE BUSHING 8 1/2 O.D. x 7 I.D. x 6" LG
33	2	NYLON 66 14 O.D. x 7 1/2 I.D. x 1/2 THICK
34	2	BRONZE PL 14 O.D. x 7 1/2 I.D. x 3/4 THICK
35	2	3/4 PL STL 14 O.D. x 6 1/2 I.D.
36	4	BRONZE 3" O.D. x 1 5/8 I.D. x 1/8 THICK
37	4	STL 316 2" DIA x 5 3/8 LG
38		NOT USED
39	2	STL 316 2" DIA x 5 3/8 LG
40	6	HEX HD NUT 1" BUNC STL
41	1	4" SCH 80 PIPE x 15' 6" LG
42	4	3/4 PL STL 4 1/2 x 8 3/4
43	2	1/2 PL STL 5 1/2 DIA.
44	2	1/2 PL STL 2 x 2 1/4
45	2	SQUARE BAR STL 3/8 x 3/8 x 1 1/2 LG
46	2	18 SCH 80 PIPE x 15 1/8 LG
47	2	MECHANICAL TUBING 11" O.D. x 7 1/2 I.D. x 8" LG
48	1	8" BORE CUTLESS RUBBER BEARING CODE 22417 6" I.D. x 8 O.D. x 22" LG CUT (2) EA 6" LG FOR PINTLE BEGS.

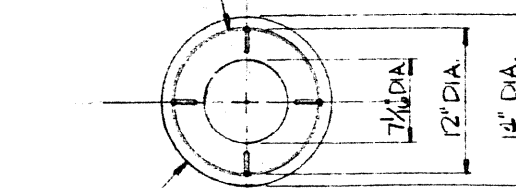


TILLER PIN (39) (40)
6" = 1'-0"

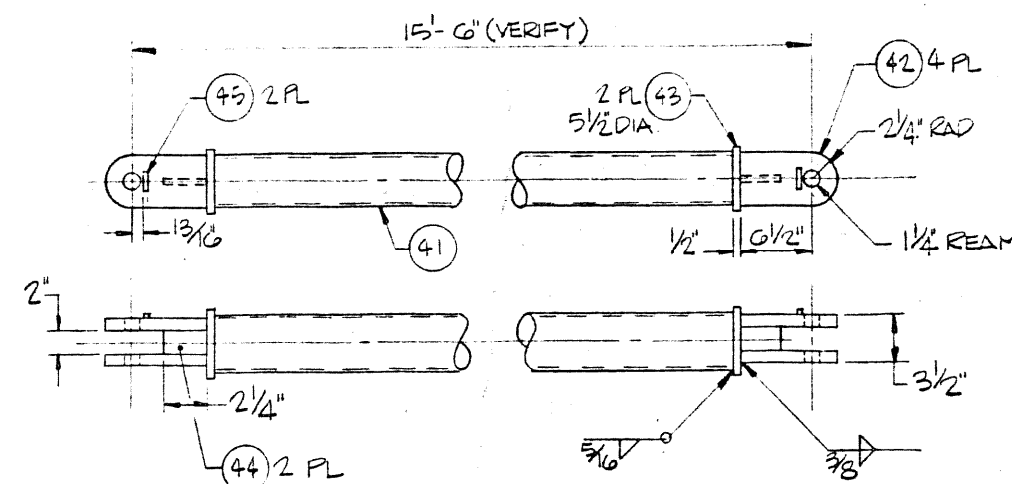


UPPER THRUST PLATE (34)
1 1/2" = 1'-0"

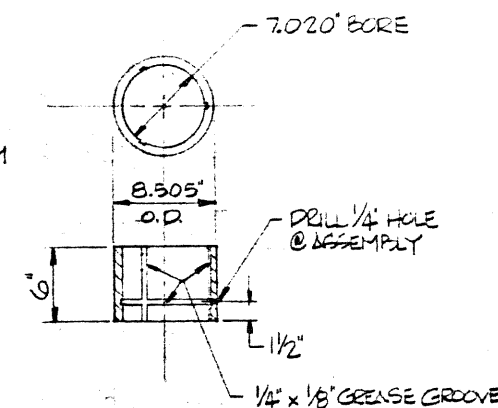
1/4 x 1/8" DEEP GREASE GROOVE
DRILL THRU @ INTERSECTION
TYPICAL - BOTH SIDES



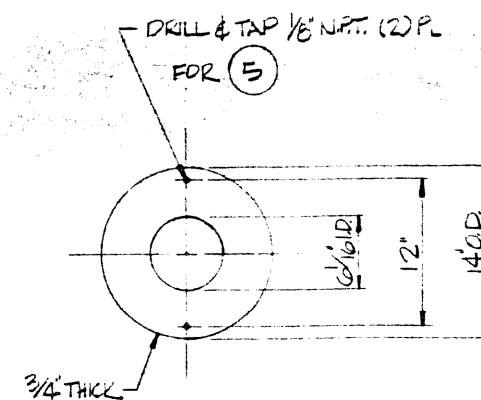
LOWER THRUST PLATE (33)
1 1/2" = 1'-0"



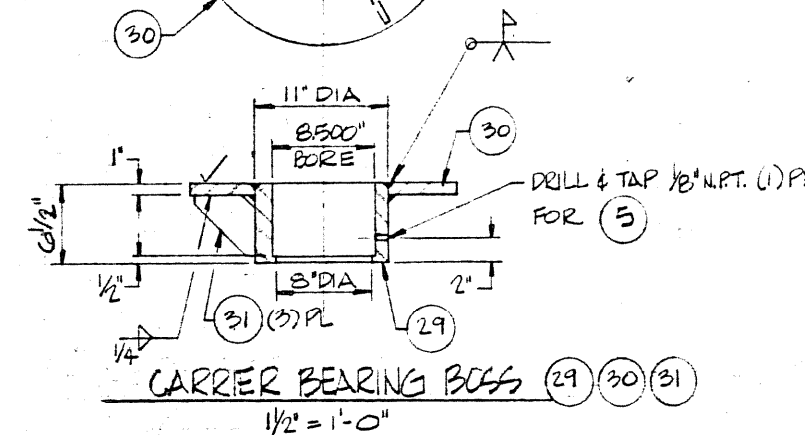
JOCKEY BAR (41) (42) (43) (44) (45)
1 1/2" = 1'-0"



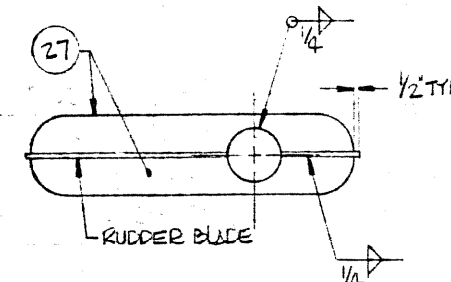
UPPER BUSHING (32)
1 1/2" = 1'-0"



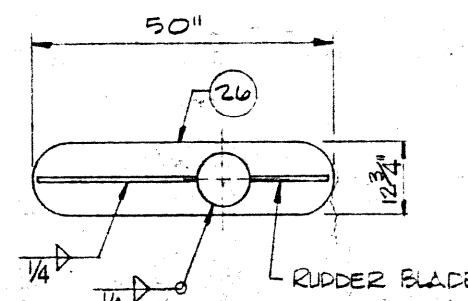
CARRIER PLATE (35)
1 1/2" = 1'-0"



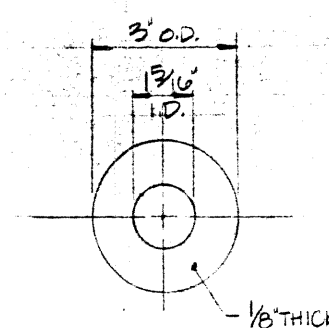
CARRIER BEARING BOSS (29) (30) (31)
1 1/2" = 1'-0"



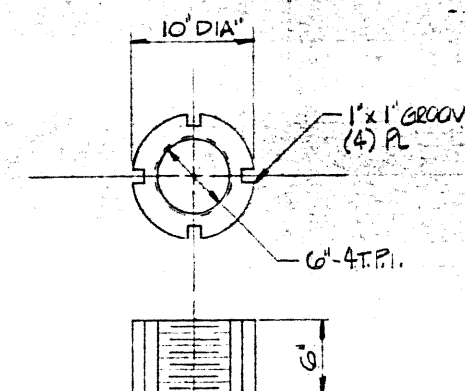
INTERMEDIATE DIAPHRAGM (27)
3/4" = 1'-0"



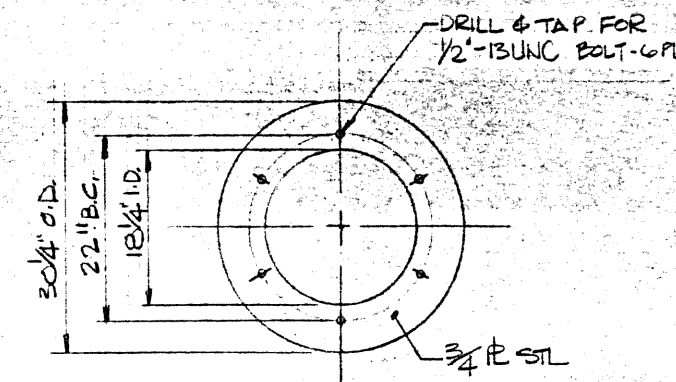
TOP/BOTTOM DIAPHRAGM (26)
3/4" = 1'-0"



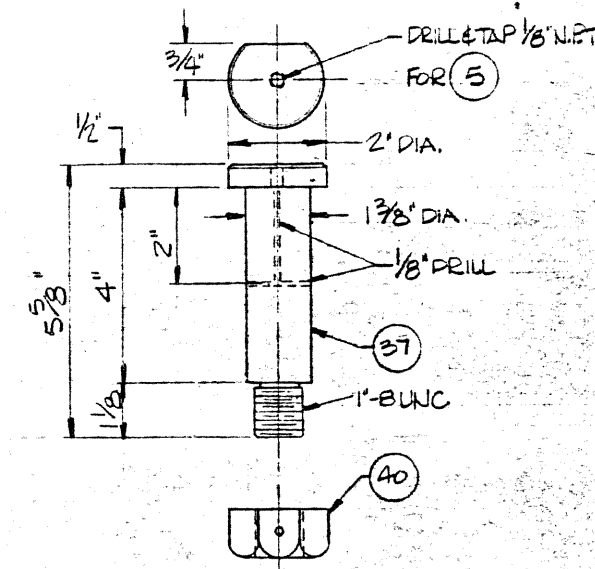
TILLER PIN SPACER (36)
6" = 1'-0"



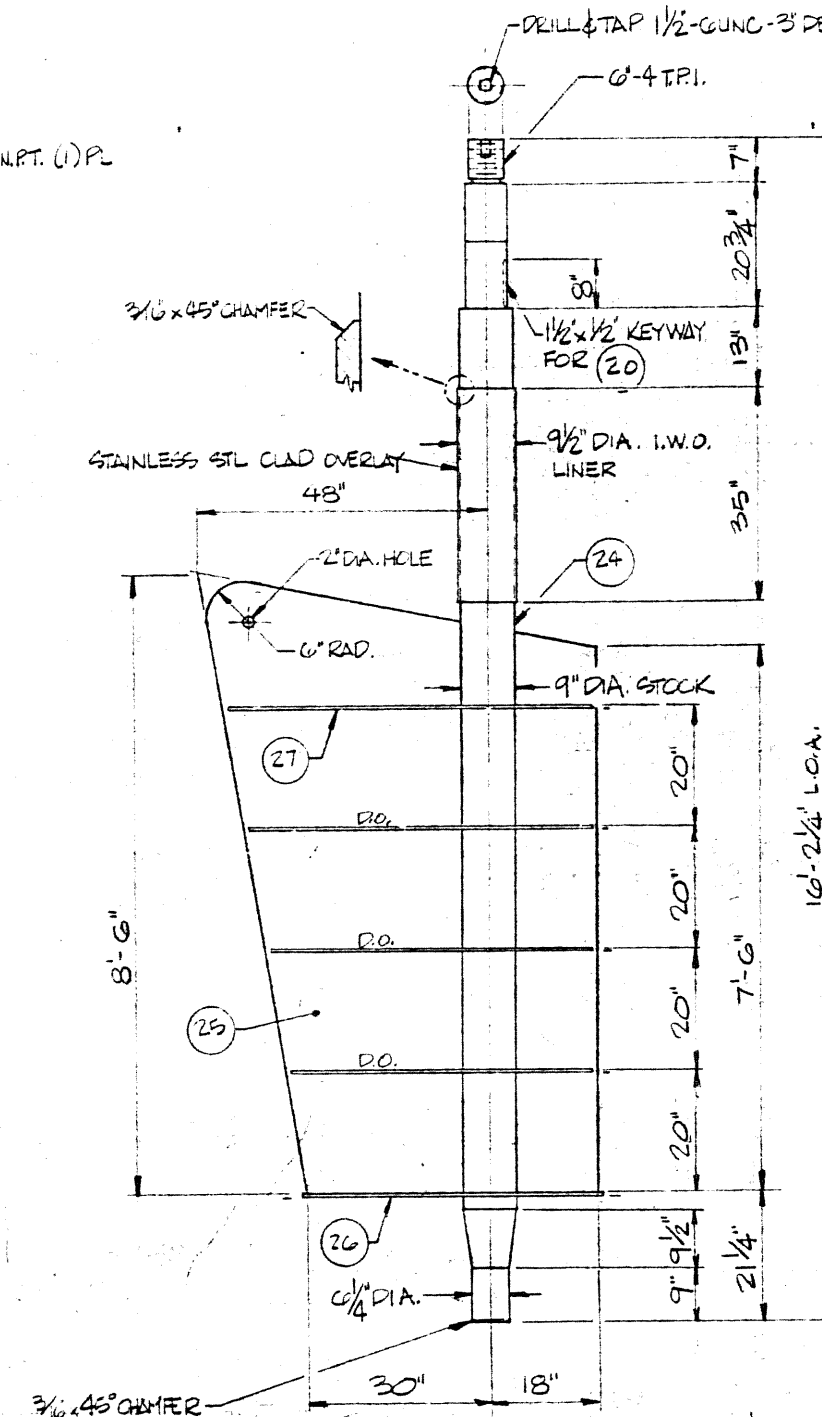
RUDDER NUT (23)
1 1/2" = 1'-0"



DETAIL "2-A"
MAIN CK DBL PL
2 EA. REQD
1" = 1'-0"



HYD. CYL. CLEVIS PIN (37) (40)
6" = 1'-0"



RUDDER DETAIL (24) (25)
3/4" = 1'-0"

This drawing is the exclusive property of Homeport Marine Services, Inc., and is furnished on a confidential basis. No portion of this drawing may be copied, traced, photographed, or in any other way reproduced; nor may any item hereon depicted be manufactured as shown without the written consent of Homeport Marine Services, Inc.. The recipient of the information contained hereon may not disclose the same to any other person or business firm; nor may he use such information except for the specific purpose intended.

156' x 38' x 16' CRAB BOAT

RUDDER DETAILS

Homeport Marine Services, Inc.

5807 ELDER FERRY ROAD • POST OFFICE BOX 748
MOSS POINT, MISSISSIPPI 38453 801-475-5533

SCALE NOTED	DATE 3-12-91
DRAWN E. WILSON	APPROVED
PULL NO. 119	DWG. NO. 112-5812-202