

Plan Dev. Largest
 3.36% 2-34

DISTRICT	Total Population Tabulation				Racial Demographics as a Percent of Total Population				Percent Voting Age	Racial Demographics as a percent of VAP			
	All Persons	Target	Dev.	Difference	White	Black	Hispanic	Minority		White	Black	Hispanic	Minority
1	17,988	18,335	-1.89%	-347	63.04%	0.82%	4.65%	36.96%	78.42%	66.53%	0.82%	3.94%	33.47%
2	17,973	18,335	-1.97%	-362	51.77%	0.40%	4.70%	48.23%	77.94%	56.04%	0.49%	3.83%	43.96%
3	18,312	18,335	-0.12%	-23	62.24%	1.20%	6.29%	37.76%	81.11%	65.93%	1.14%	5.37%	34.07%
4	18,013	18,335	-1.75%	-322	66.42%	0.79%	5.85%	33.58%	76.71%	70.20%	0.92%	5.02%	29.80%
5	18,587	18,335	1.38%	252	61.03%	0.69%	3.75%	38.97%	76.55%	64.39%	0.71%	3.25%	35.61%
6	18,417	18,335	0.45%	82	70.72%	2.43%	5.52%	29.28%	77.04%	73.39%	2.54%	4.90%	26.61%
7	18,377	18,335	0.23%	42	53.34%	6.90%	8.12%	46.66%	78.01%	56.95%	7.06%	7.12%	43.05%
8	18,315	18,335	-0.11%	-20	65.31%	8.11%	13.54%	34.69%	74.63%	67.96%	8.42%	12.98%	32.04%
9	18,454	18,335	0.65%	119	74.01%	3.25%	7.65%	25.99%	72.32%	75.97%	3.51%	7.04%	24.03%
10	18,539	18,335	1.11%	204	78.73%	0.95%	4.26%	21.27%	77.68%	81.32%	0.94%	3.41%	18.68%
11	18,254	18,335	-0.44%	-81	80.62%	0.77%	3.77%	19.38%	76.79%	83.53%	0.71%	3.03%	16.47%
12	18,395	18,335	0.33%	60	73.61%	1.47%	4.84%	26.39%	73.71%	75.39%	1.75%	3.98%	24.61%
13	18,274	18,335	-0.33%	-61	76.43%	1.11%	5.62%	23.57%	71.59%	79.04%	1.23%	4.36%	20.96%
14	18,509	18,335	0.95%	174	76.98%	1.13%	5.60%	23.02%	70.93%	79.64%	1.22%	4.56%	20.36%
15	18,487	18,335	0.83%	152	77.04%	1.22%	5.57%	22.96%	71.70%	80.07%	1.35%	4.72%	19.93%
16	18,075	18,335	-1.42%	-260	80.70%	0.48%	3.63%	19.30%	73.97%	83.19%	0.49%	2.73%	16.81%
17	18,287	18,335	-0.26%	-48	74.71%	1.63%	6.96%	25.29%	74.96%	78.05%	1.62%	5.84%	21.95%
18	18,287	18,335	-0.26%	-48	72.87%	5.48%	11.51%	27.13%	72.36%	74.73%	5.87%	10.57%	25.27%
19	18,198	18,335	-0.75%	-137	50.42%	7.63%	9.29%	49.58%	73.89%	54.80%	7.95%	8.32%	45.20%
20	18,244	18,335	-0.50%	-91	52.21%	7.32%	8.00%	47.79%	75.88%	57.57%	7.47%	6.60%	42.43%
21	18,399	18,335	0.35%	64	48.56%	8.90%	11.65%	51.44%	75.10%	52.88%	9.28%	10.43%	47.12%
22	18,513	18,335	0.97%	178	30.48%	9.56%	13.44%	69.52%	72.29%	36.11%	9.71%	12.25%	63.89%
23	18,362	18,335	0.15%	27	50.41%	8.15%	9.24%	49.59%	83.83%	54.38%	7.68%	7.85%	45.62%
24	18,463	18,335	0.70%	128	51.31%	5.44%	8.95%	48.69%	81.61%	55.34%	5.44%	7.93%	44.66%
25	18,575	18,335	1.31%	240	47.17%	5.67%	10.02%	52.83%	78.52%	51.70%	5.76%	9.08%	48.30%
26	18,167	18,335	-0.92%	-168	56.17%	3.17%	8.27%	43.83%	75.97%	59.52%	3.33%	7.54%	40.48%
27	18,488	18,335	0.84%	153	59.33%	2.82%	7.29%	40.67%	78.69%	63.51%	2.88%	6.45%	36.49%
28	18,264	18,335	-0.39%	-71	58.57%	2.80%	7.06%	41.43%	76.08%	62.72%	2.83%	5.90%	37.28%
29	18,211	18,335	-0.68%	-124	47.35%	4.13%	12.46%	52.65%	77.83%	51.97%	4.19%	11.02%	48.03%
30	18,246	18,335	-0.48%	-89	63.49%	2.69%	7.44%	36.51%	75.51%	67.05%	2.68%	6.42%	32.95%
31	18,354	18,335	0.10%	19	64.30%	3.09%	7.74%	35.70%	76.03%	67.44%	2.88%	6.61%	32.56%
32	18,507	18,335	0.94%	172	78.87%	0.97%	5.10%	21.13%	75.94%	81.89%	1.00%	4.31%	18.11%
33	18,568	18,335	1.27%	233	79.46%	1.08%	3.76%	20.54%	80.26%	80.79%	1.22%	3.25%	19.21%
34	18,589	18,335	1.39%	254	75.73%	0.61%	5.20%	24.27%	74.83%	78.76%	0.66%	4.16%	21.24%
35	18,433	18,335	0.54%	98	84.19%	0.35%	3.07%	15.81%	80.21%	85.58%	0.34%	2.55%	14.42%
36	18,462	18,335	0.69%	127	54.50%	0.71%	7.29%	45.50%	75.19%	57.10%	0.83%	6.38%	42.90%
37	18,137	18,335	-1.08%	-198	21.63%	3.26%	8.77%	78.37%	78.01%	25.17%	4.15%	9.79%	74.83%
38	18,271	18,335	-0.35%	-64	8.23%	0.46%	0.95%	91.77%	63.62%	10.91%	0.67%	1.05%	89.09%
39	18,319	18,335	-0.09%	-16	10.14%	0.41%	1.32%	89.86%	65.34%	13.38%	0.51%	1.32%	86.62%
40	18,078	18,335	-1.40%	-257	20.84%	1.28%	3.58%	79.16%	70.43%	27.82%	1.71%	4.27%	72.18%



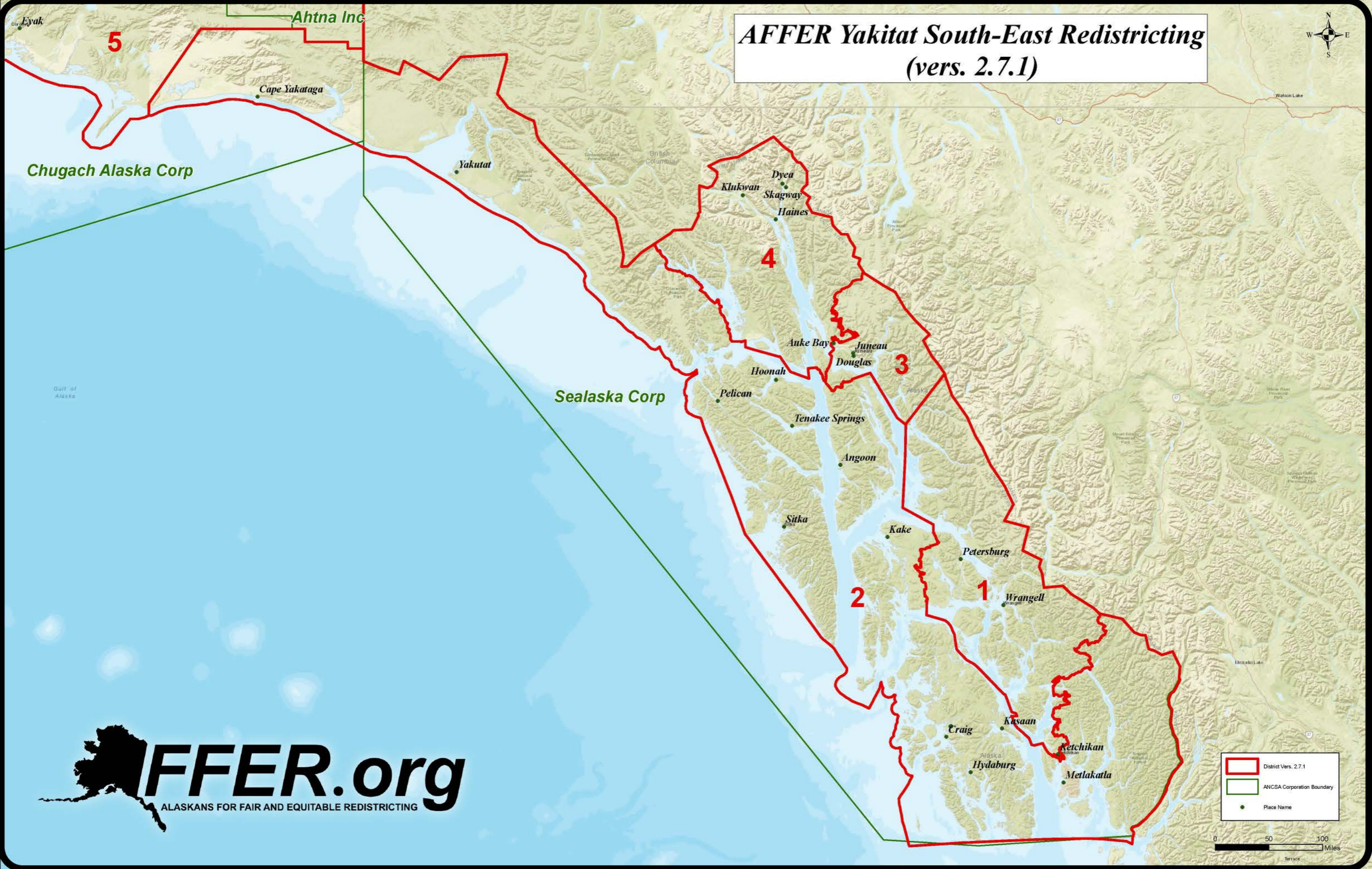
<https://arcg.is/1ny9TK>

AFFER Plan 2.71 Matrix - Deviation

DISTRICT	Total Population Tabulation				Racial Demographics as a Percent of Total Population				Percent	Racial Demographics as a percent of VAP			
	All Persons	Target	Dev.	Difference	White	Black	Hispanic	Minority	Voting Age	White	Black	Hispanic	Minority
1	17,988	18,335	-1.89%✓	-347	63.04%	0.82%	4.65%	36.96%	78.42%	66.53%	0.82%	3.94%	33.47%
2	17,973	18,335	-1.97%✓	-362	51.77%	0.40%	4.70%	48.23%	77.94%	56.04%	0.49%	3.83%	43.96%
3	18,312	18,335	-0.12%✓	-23	62.24%	1.20%	6.29%	37.76%	81.11%	65.93%	1.14%	5.37%	34.07%
4	18,013	18,335	-1.75%✓	-322	66.42%	0.79%	5.85%	33.58%	76.71%	70.20%	0.92%	5.02%	29.80%
5	18,587	18,335	1.38%✓	252	61.03%	0.69%	3.75%	38.97%	76.55%	64.39%	0.71%	3.25%	35.61%
6	18,417	18,335	0.45%✓	82	70.72%	2.43%	5.52%	29.28%	77.04%	73.39%	2.54%	4.90%	26.61%
7	18,377	18,335	0.23%✓	42	53.34%	6.90%	8.12%	46.66%	78.01%	56.95%	7.06%	7.12%	43.05%
8	18,315	18,335	-0.11%✓	-20	65.31%	8.11%	13.54%	34.69%	74.63%	67.96%	8.42%	12.98%	32.04%
9	18,454	18,335	0.65%✓	119	74.01%	3.25%	7.65%	25.99%	72.32%	75.97%	3.51%	7.04%	24.03%
10	18,539	18,335	1.11%✓	204	78.73%	0.95%	4.26%	21.27%	77.68%	81.32%	0.94%	3.41%	18.68%
11	18,254	18,335	-0.44%✓	-81	80.62%	0.77%	3.77%	19.38%	76.79%	83.53%	0.71%	3.03%	16.47%
12	18,395	18,335	0.33%✓	60	73.61%	1.47%	4.84%	26.39%	73.71%	75.39%	1.75%	3.98%	24.61%
13	18,274	18,335	-0.33%✓	-61	76.43%	1.11%	5.62%	23.57%	71.59%	79.04%	1.23%	4.36%	20.96%
14	18,509	18,335	0.95%✓	174	76.98%	1.13%	5.60%	23.02%	70.93%	79.64%	1.22%	4.56%	20.36%
15	18,487	18,335	0.83%✓	152	77.04%	1.22%	5.57%	22.96%	71.70%	80.07%	1.35%	4.72%	19.93%
16	18,075	18,335	-1.42%✓	-260	80.70%	0.48%	3.63%	19.30%	73.97%	83.19%	0.49%	2.73%	16.81%
17	18,287	18,335	-0.26%✓	-48	74.71%	1.63%	6.96%	25.29%	74.96%	78.05%	1.62%	5.84%	21.95%
18	18,287	18,335	-0.26%✓	-48	72.87%	5.48%	11.51%	27.13%	72.36%	74.73%	5.87%	10.57%	25.27%
19	18,198	18,335	-0.75%✓	-137	50.42%	7.63%	9.29%	49.58%	73.89%	54.80%	7.95%	8.32%	45.20%
20	18,244	18,335	-0.50%✓	-91	52.21%	7.32%	8.00%	47.79%	75.88%	57.57%	7.47%	6.60%	42.43%
21	18,399	18,335	0.35%✓	64	48.56%	8.90%	11.65%	51.44%	75.10%	52.88%	9.28%	10.43%	47.12%
22	18,513	18,335	0.97%✓	178	30.48%	9.56%	13.44%	69.52%	72.29%	36.11%	9.71%	12.25%	63.89%
23	18,362	18,335	0.15%✓	27	50.41%	8.15%	9.24%	49.59%	83.83%	54.38%	7.68%	7.85%	45.62%
24	18,463	18,335	0.70%✓	128	51.31%	5.44%	8.95%	48.69%	81.61%	55.34%	5.44%	7.93%	44.66%
25	18,575	18,335	1.31%✓	240	47.17%	5.67%	10.02%	52.83%	78.52%	51.70%	5.76%	9.08%	48.30%
26	18,167	18,335	-0.92%✓	-168	56.17%	3.17%	8.27%	43.83%	75.97%	59.52%	3.33%	7.54%	40.48%
27	18,488	18,335	0.84%✓	153	59.33%	2.82%	7.29%	40.67%	78.69%	63.51%	2.88%	6.45%	36.49%
28	18,264	18,335	-0.39%✓	-71	58.57%	2.80%	7.06%	41.43%	76.08%	62.72%	2.83%	5.90%	37.28%
29	18,211	18,335	-0.68%✓	-124	47.35%	4.13%	12.46%	52.65%	77.83%	51.97%	4.19%	11.02%	48.03%
30	18,246	18,335	-0.48%✓	-89	63.49%	2.69%	7.44%	36.51%	75.51%	67.05%	2.68%	6.42%	32.95%
31	18,354	18,335	0.10%✓	19	64.30%	3.09%	7.74%	35.70%	76.03%	67.44%	2.88%	6.61%	32.56%
32	18,507	18,335	0.94%✓	172	78.87%	0.97%	5.10%	21.13%	75.94%	81.89%	1.00%	4.31%	18.11%
33	18,568	18,335	1.27%✓	233	79.46%	1.08%	3.76%	20.54%	80.26%	80.79%	1.22%	3.25%	19.21%
34	18,589	18,335	1.39%✓	254	75.73%	0.61%	5.20%	24.27%	74.83%	78.76%	0.66%	4.16%	21.24%
35	18,433	18,335	0.54%✓	98	84.19%	0.35%	3.07%	15.81%	80.21%	85.58%	0.34%	2.55%	14.42%
36	18,462	18,335	0.69%✓	127	54.50%	0.71%	7.29%	45.50%	75.19%	57.10%	0.83%	6.38%	42.90%
37	18,137	18,335	-1.08%✓	-198	21.63%	3.26%	8.77%	78.37%	78.01%	25.17%	4.15%	9.79%	74.83%
38	18,271	18,335	-0.35%✓	-64	8.23%	0.46%	0.95%	91.77%	63.62%	10.91%	0.67%	1.05%	89.09%
39	18,319	18,335	-0.09%✓	-16	10.14%	0.41%	1.32%	89.86%	65.34%	13.38%	0.51%	1.32%	86.62%
40	18,078	18,335	-1.40%✓	-257	20.84%	1.28%	3.58%	79.16%	70.43%	27.82%	1.71%	4.27%	72.18%
Assigned	733391												

Plan Dev.	Largest
3.36%	2-34

AFFER Yakutat South-East Redistricting (vers. 2.7.1)



	District Vers. 2.7.1
	ANCSA Corporation Boundary
	Place Name



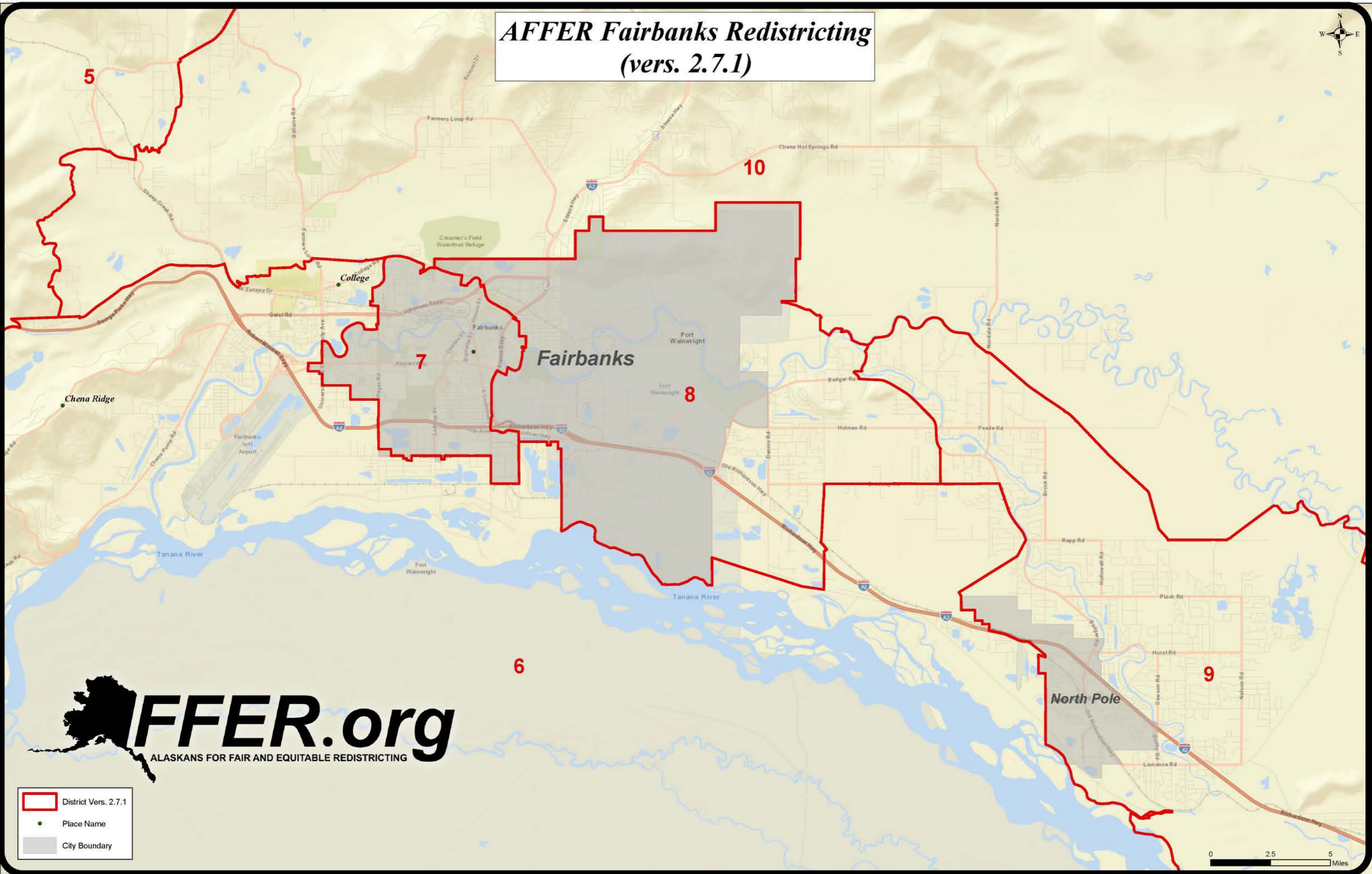
AFFER South-East Redistricting (vers. 2.7.1)



	District Vers. 2.7.1
	ANCSA Corporation Boundary
	Place Name



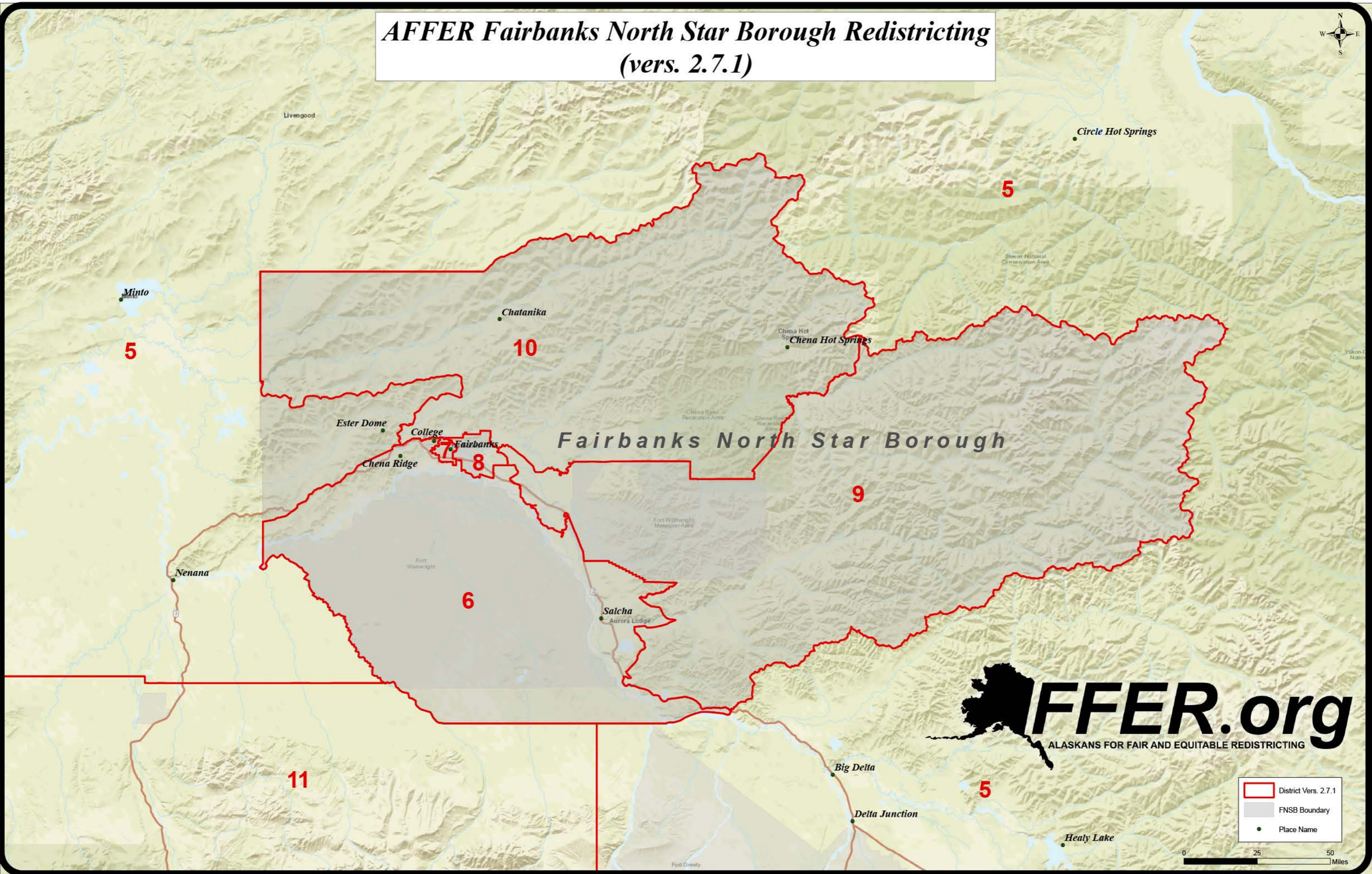
AFFER Fairbanks Redistricting (vers. 2.7.1)



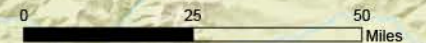
- District Vers. 2.7.1
- Place Name
- City Boundary



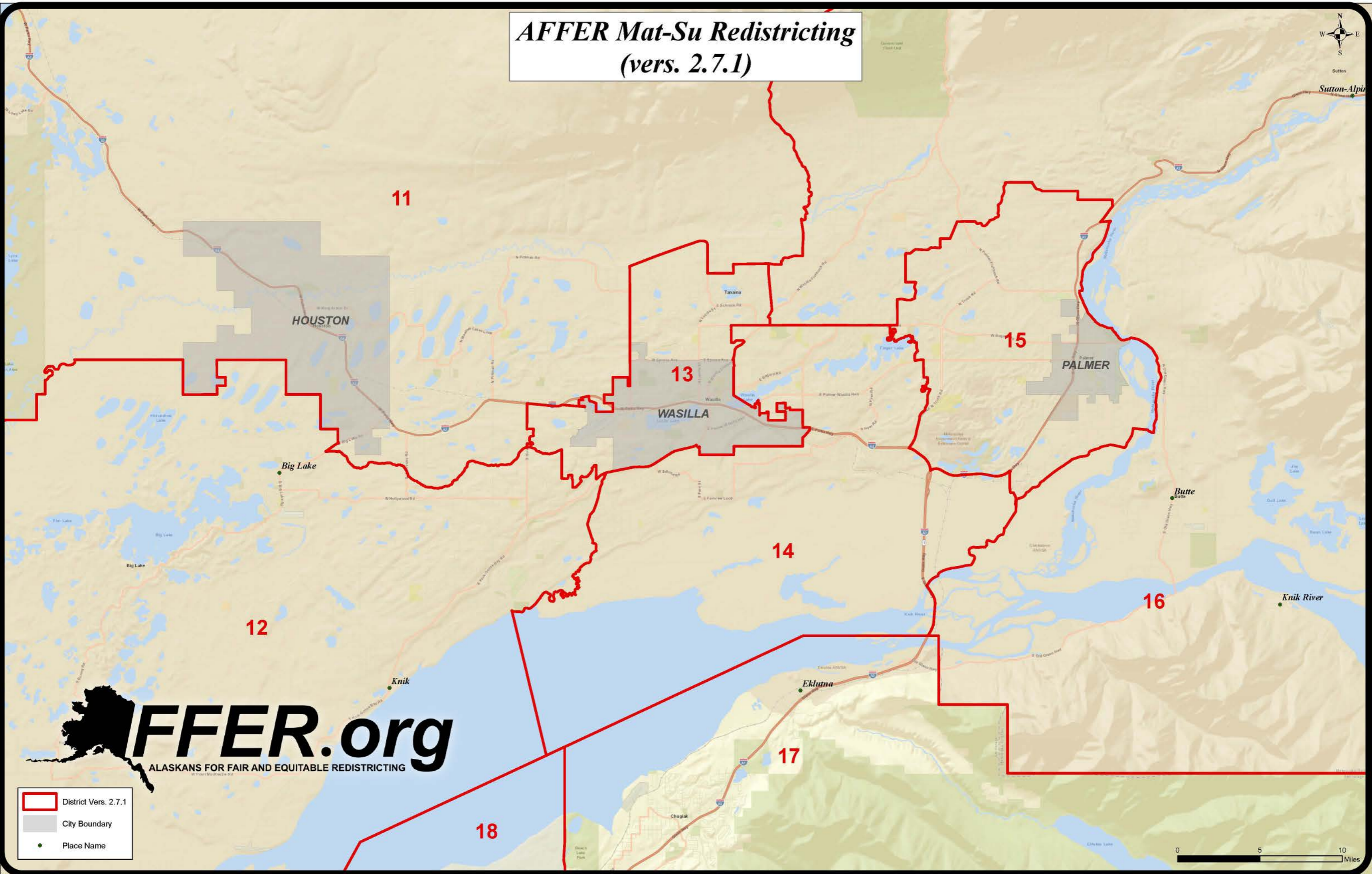
AFFER Fairbanks North Star Borough Redistricting (vers. 2.7.1)



	District Vers. 2.7.1
	FNSB Boundary
	Place Name



AFFER Mat-Su Redistricting (vers. 2.7.1)



11

HOUSTON

13

WASILLA

15

PALMER

12

Big Lake

14

16

Knik River

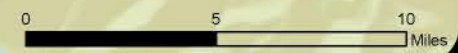
 **AFFER.org**
ALASKANS FOR FAIR AND EQUITABLE REDISTRICTING

-  District Vers. 2.7.1
-  City Boundary
-  Place Name

18

17

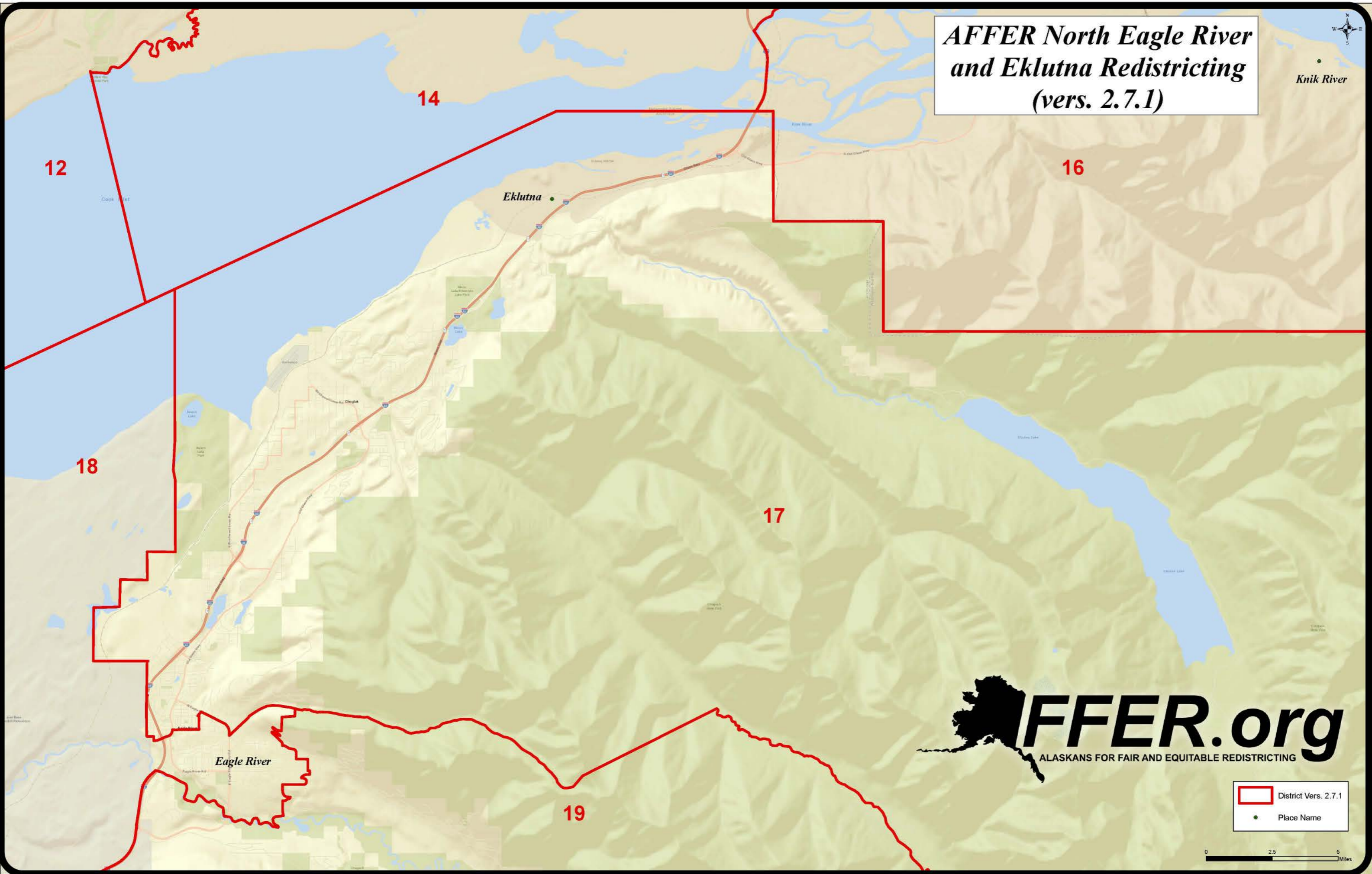
Eklutna



AFFER North Eagle River and Eklutna Redistricting (vers. 2.7.1)



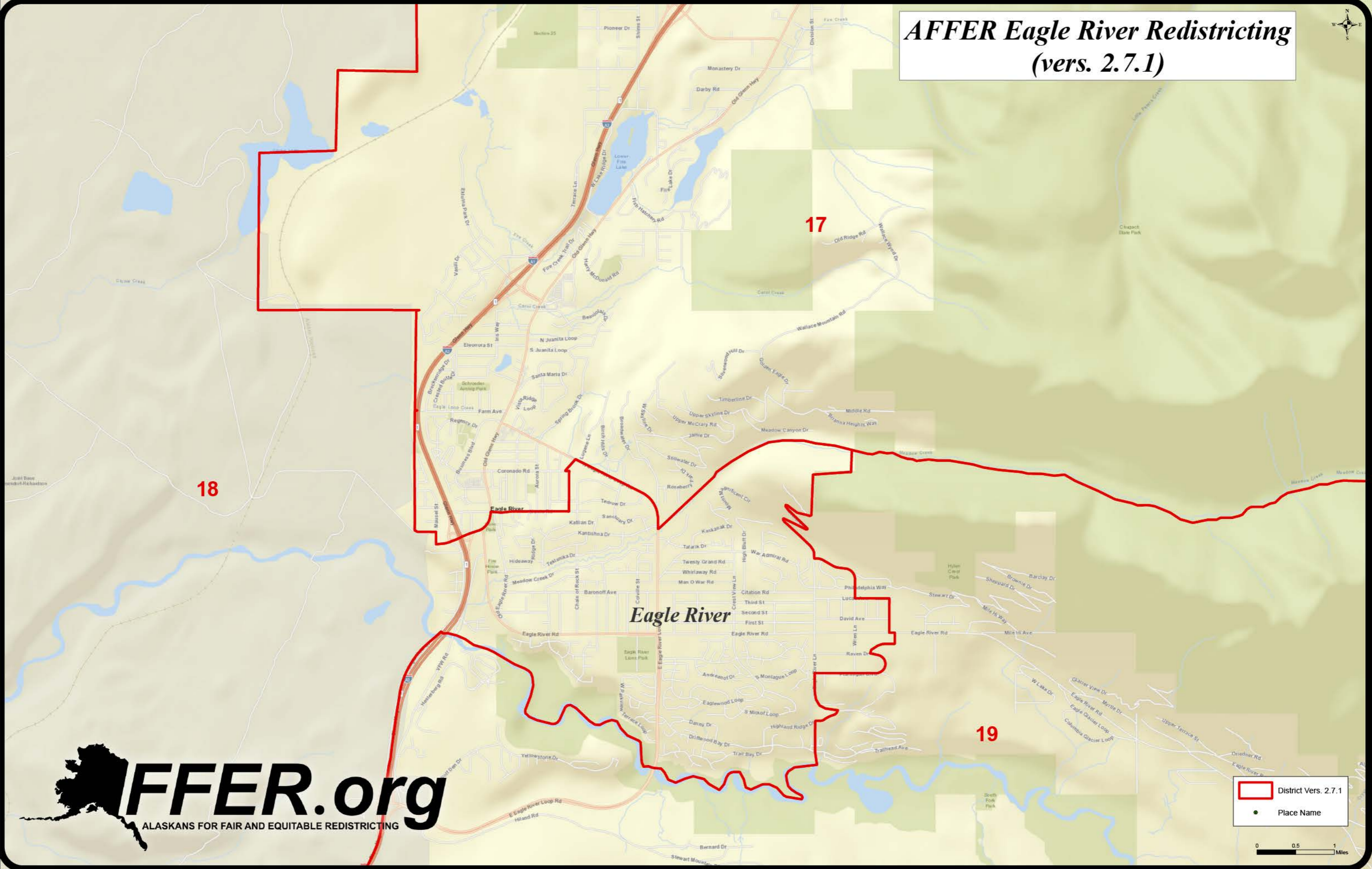
Knik River



Legend:
[Red outline] District Vers. 2.7.1
[Black dot] Place Name



AFFER Eagle River Redistricting (vers. 2.7.1)



18

17

19

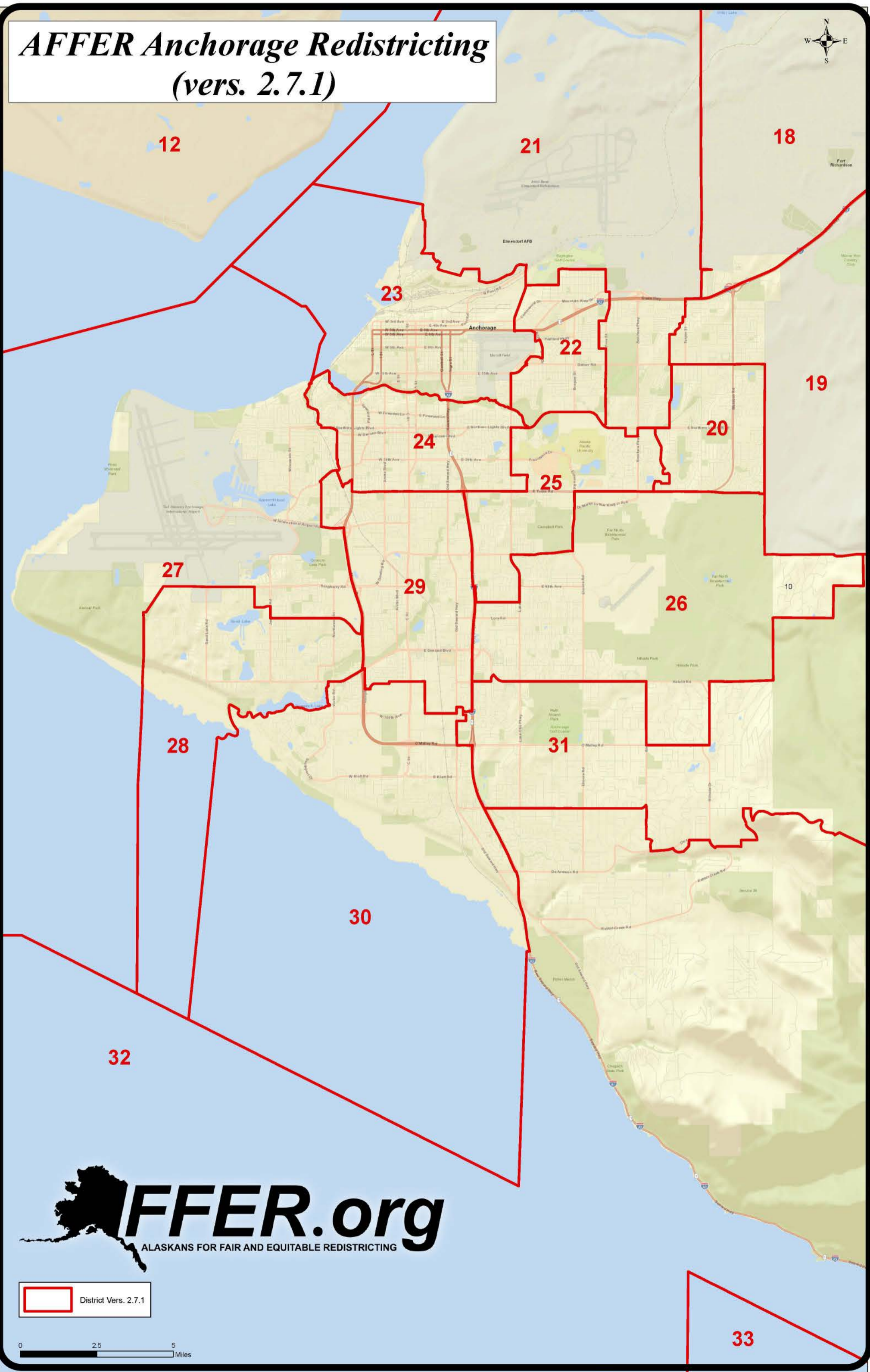
Eagle River



Legend:
[Red Outline] District Vers. 2.7.1
● Place Name



AFFER Anchorage Redistricting (vers. 2.7.1)

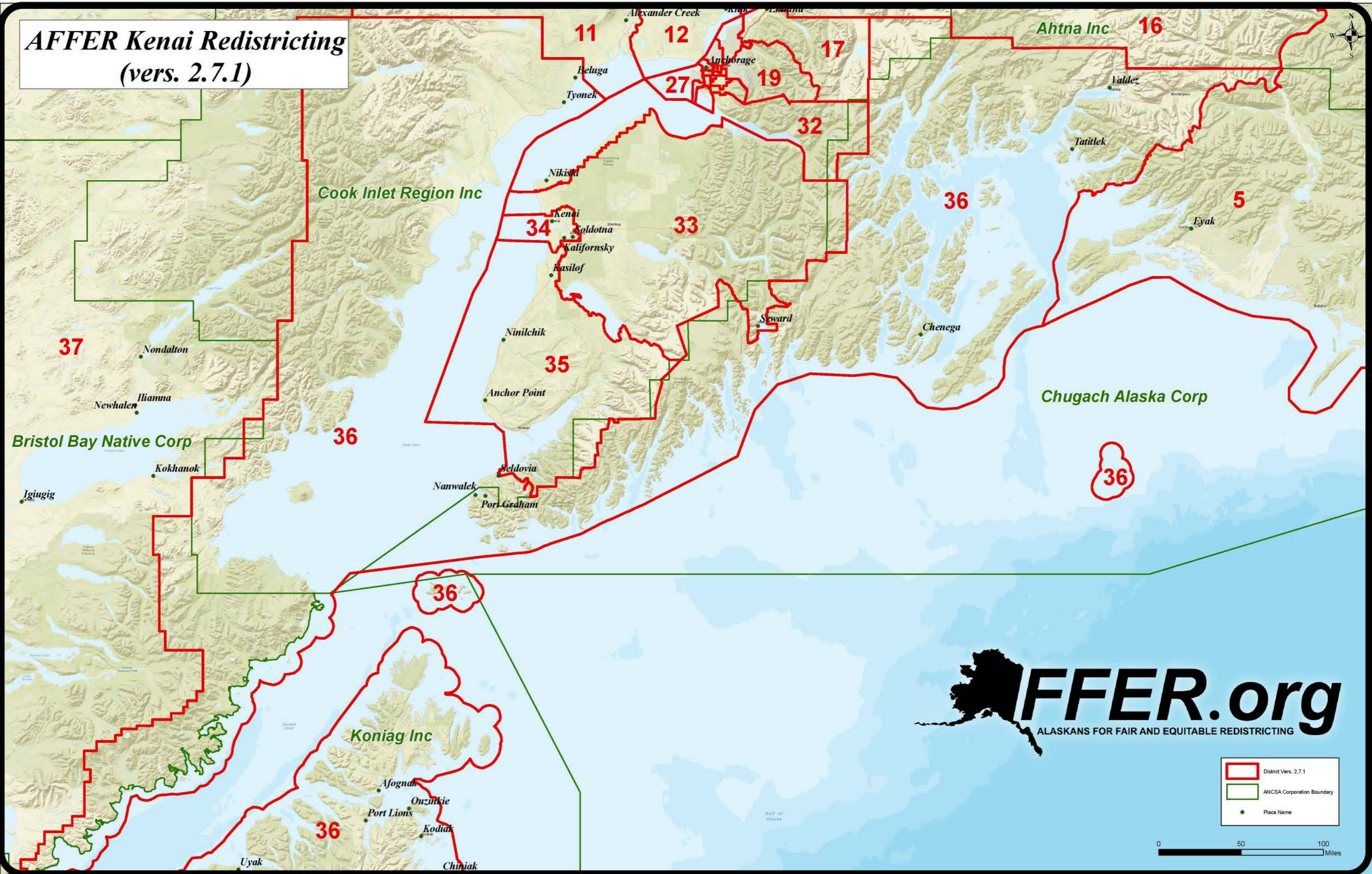


 District Vers. 2.7.1

0 2.5 5 Miles

33

AFFER Kenai Redistricting (vers. 2.7.1)

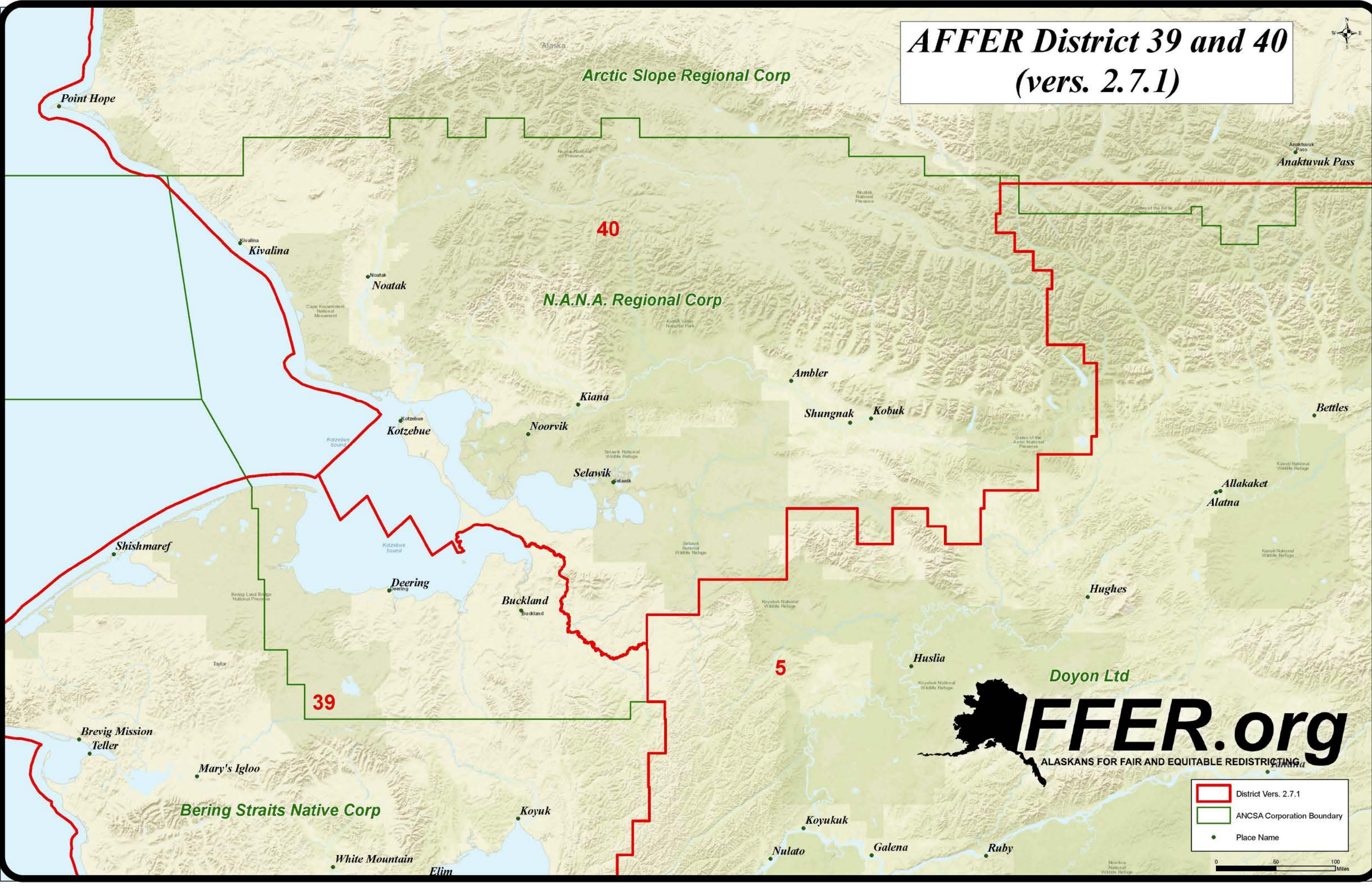


Legend:

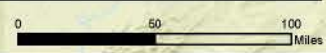
- District Vers. 2.7.1
- ANCSA Corporation Boundary
- Place Name



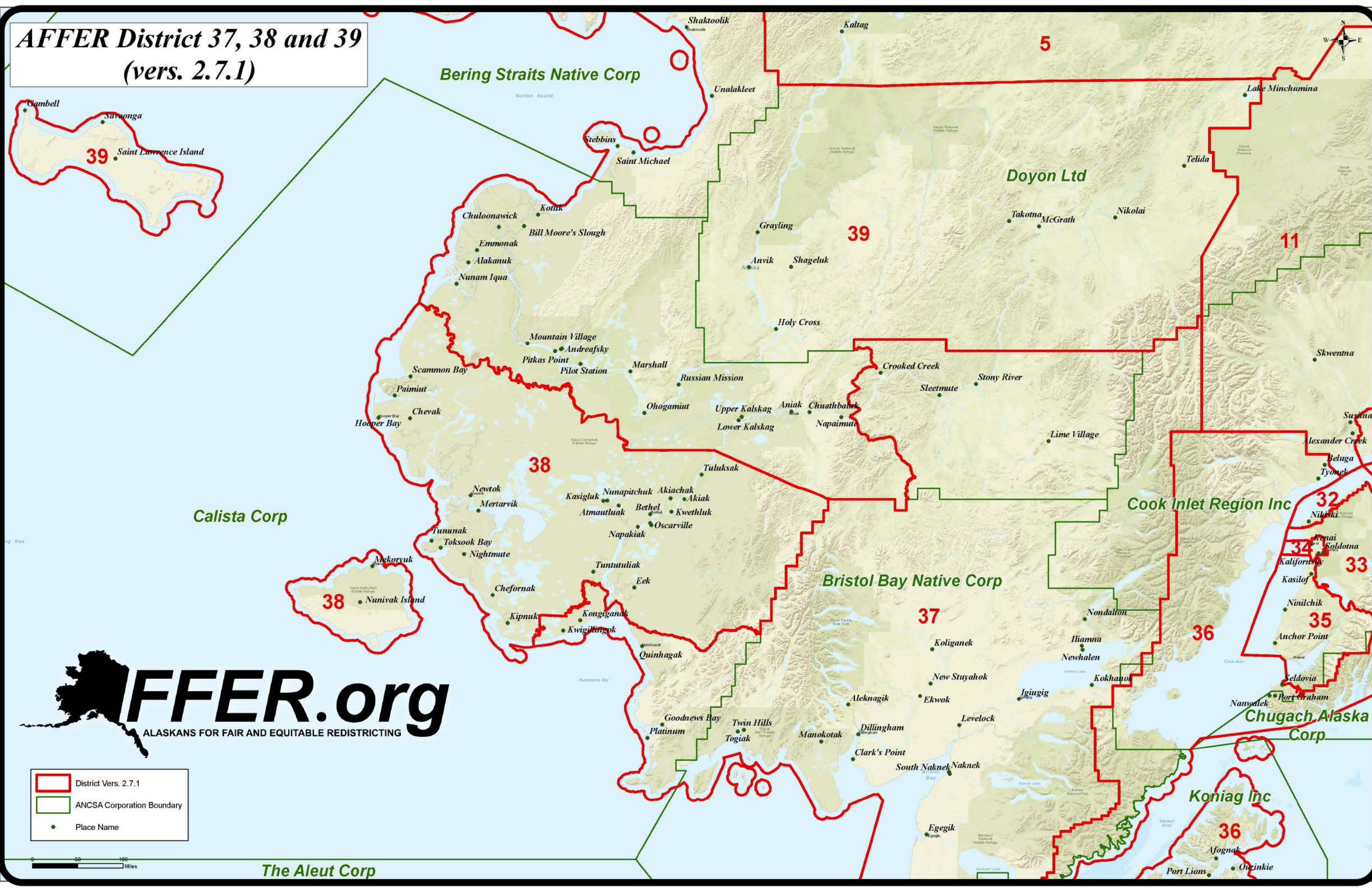
AFFER District 39 and 40 (vers. 2.7.1)



- District Vers. 2.7.1
- ANCSA Corporation Boundary
- Place Name



AFFER District 37, 38 and 39 (vers. 2.7.1)



District Vers. 2.7.1
 ANCSA Corporation Boundary
 Place Name

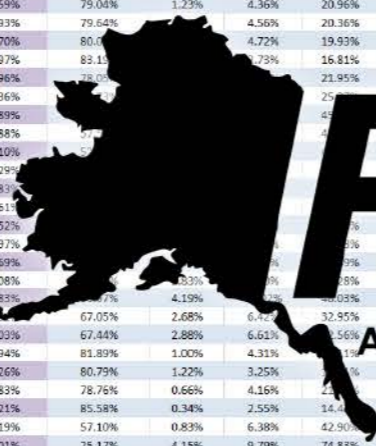


The Aleut Corp

Questions?

Plan Dev.	Largest
3.36%	2-34

DISTRICT	Total Population Tabulation				Racial Demographics as a Percent of Total Population				Percent Voting Age	Demographics as a percent of VAP			
	All Persons	Target	Dev.	Difference	White	Black	Hispanic	Minority		White	Black	Hispanic	Minority
1	17,988	18,335	-1.89%	-347	63.04%	0.82%	4.65%	36.96%	78.42%	0.82%	3.94%	33.47%	
2	17,973	18,335	-1.97%	-362	51.77%	0.40%	4.70%	48.23%	77.94%	0.49%	3.83%	43.96%	
3	18,312	18,335	-0.12%	-23	62.24%	1.20%	6.29%	37.76%	81.11%	1.14%	5.37%	34.07%	
4	18,013	18,335	-1.75%	-322	66.42%	0.79%	5.85%	33.58%	76.71%	0.92%	5.02%	29.80%	
5	18,587	18,335	1.58%	252	61.03%	0.69%	3.75%	38.97%	76.55%	0.71%	3.25%	35.61%	
6	18,417	18,335	0.45%	82	70.72%	2.43%	5.52%	29.28%	77.04%	2.54%	4.90%	28.61%	
7	18,577	18,335	0.23%	42	53.34%	6.90%	8.12%	46.66%	78.01%	7.06%	7.12%	43.05%	
8	18,315	18,335	-0.11%	-20	65.31%	8.11%	13.54%	34.69%	74.63%	67.96%	8.42%	12.98%	
9	18,454	18,335	0.65%	119	74.01%	3.25%	7.65%	25.99%	72.32%	75.97%	3.51%	7.04%	
10	18,539	18,335	1.11%	204	78.73%	0.95%	4.26%	21.27%	77.68%	0.94%	3.41%	18.68%	
11	18,254	18,335	-0.44%	-81	80.62%	0.77%	3.77%	19.38%	76.79%	83.58%	0.71%	3.03%	
12	18,395	18,335	0.33%	60	73.61%	1.47%	4.84%	26.39%	73.71%	75.39%	1.75%	3.98%	
13	18,274	18,335	-0.33%	-61	76.43%	1.11%	5.62%	23.57%	71.59%	79.04%	1.23%	4.36%	
14	18,509	18,335	0.95%	174	76.98%	1.13%	5.60%	23.02%	70.93%	79.64%	4.56%	20.36%	
15	18,487	18,335	0.83%	152	77.04%	1.22%	5.57%	22.56%	71.70%	80.1%	4.72%	19.93%	
16	18,075	18,335	-1.42%	-260	80.70%	0.48%	3.63%	19.30%	73.97%	83.1%	7.73%	16.81%	
17	18,287	18,335	-0.26%	-48	74.71%	1.63%	6.96%	25.29%	74.96%	78.0%	7.73%	21.95%	
18	18,287	18,335	-0.26%	-48	72.87%	5.48%	11.51%	27.13%	72.36%	78.0%	7.73%	21.95%	
19	18,198	18,335	-0.75%	-137	50.42%	7.63%	9.29%	49.58%	73.89%	78.0%	7.73%	21.95%	
20	18,244	18,335	-0.50%	-91	52.21%	7.32%	8.00%	47.79%	75.88%	78.0%	7.73%	21.95%	
21	18,399	18,335	0.35%	64	48.56%	8.90%	11.65%	51.44%	75.10%	78.0%	7.73%	21.95%	
22	18,513	18,335	0.97%	178	30.48%	9.56%	13.44%	69.52%	72.29%	78.0%	7.73%	21.95%	
23	18,362	18,335	0.15%	27	50.41%	8.15%	9.24%	49.59%	83.8%	78.0%	7.73%	21.95%	
24	18,463	18,335	0.70%	128	51.31%	5.44%	8.95%	48.69%	81.6%	78.0%	7.73%	21.95%	
25	18,575	18,335	1.51%	240	47.17%	5.67%	10.02%	52.83%	78.52%	78.0%	7.73%	21.95%	
26	18,167	18,335	-0.92%	-168	56.17%	3.17%	8.27%	43.83%	75.97%	78.0%	7.73%	21.95%	
27	18,488	18,335	0.84%	153	59.33%	2.82%	7.29%	40.67%	78.69%	78.0%	7.73%	21.95%	
28	18,264	18,335	-0.39%	-71	58.57%	2.80%	7.06%	41.43%	76.08%	78.0%	7.73%	21.95%	
29	18,211	18,335	-0.68%	-124	47.35%	4.13%	12.46%	52.65%	77.83%	78.0%	7.73%	21.95%	
30	18,246	18,335	-0.48%	-89	63.49%	2.69%	7.44%	36.51%	75.7%	67.05%	2.68%	6.4%	
31	18,354	18,335	0.10%	19	64.30%	3.09%	7.74%	35.70%	76.03%	67.44%	2.88%	6.61%	
32	18,507	18,335	0.94%	172	78.87%	0.97%	5.10%	21.13%	75.94%	81.89%	1.00%	4.31%	
33	18,568	18,335	1.27%	233	79.46%	1.08%	3.76%	20.54%	80.26%	80.79%	1.22%	3.25%	
34	18,589	18,335	1.39%	254	75.73%	0.61%	5.20%	24.27%	74.83%	78.76%	0.66%	4.16%	
35	18,433	18,335	0.54%	98	84.19%	0.35%	3.07%	15.81%	80.21%	85.58%	0.34%	2.55%	
36	18,462	18,335	0.69%	127	54.50%	0.71%	7.29%	45.50%	75.19%	57.10%	0.83%	6.38%	
37	18,137	18,335	-1.08%	-198	21.63%	3.26%	8.77%	78.37%	78.01%	25.17%	4.15%	9.79%	
38	18,271	18,335	-0.35%	-64	8.23%	0.46%	0.95%	91.77%	63.62%	10.91%	0.67%	1.05%	
39	18,319	18,335	-0.09%	-16	10.14%	0.41%	1.32%	89.86%	65.34%	13.38%	0.51%	1.32%	
40	18,078	18,335	-1.40%	-257	20.84%	1.28%	3.58%	79.16%	70.43%	27.82%	1.71%	4.27%	
Assigned	733391												



AFFER.org
 ALASKANS FOR FAIR AND EQUITABLE REDISTRICTING

For more information visit AFFER.org
 or
 email Info@AFFER.org

<https://arcg.is/1ny9TK>