
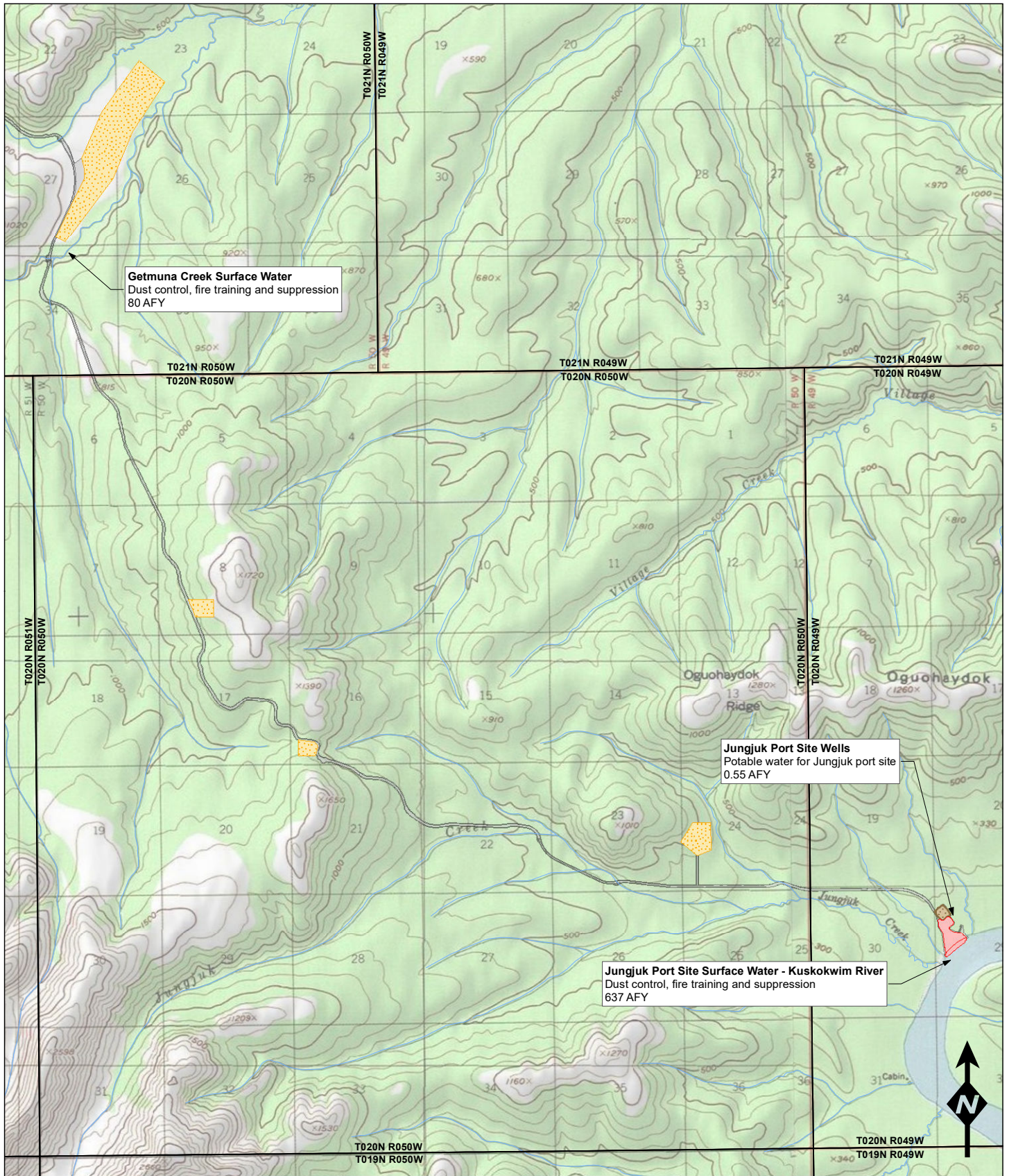


**WATER SOURCE LOCATIONS
WITH PROJECTED USES
MINE AREA**
DONLIN GOLD PROJECT

SCALE:
0 0.5 1 mi
0 1 2 km





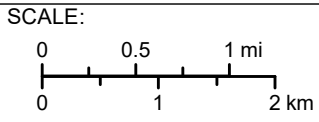
Getmuna Creek Surface Water
 Dust control, fire training and suppression
 80 AFY

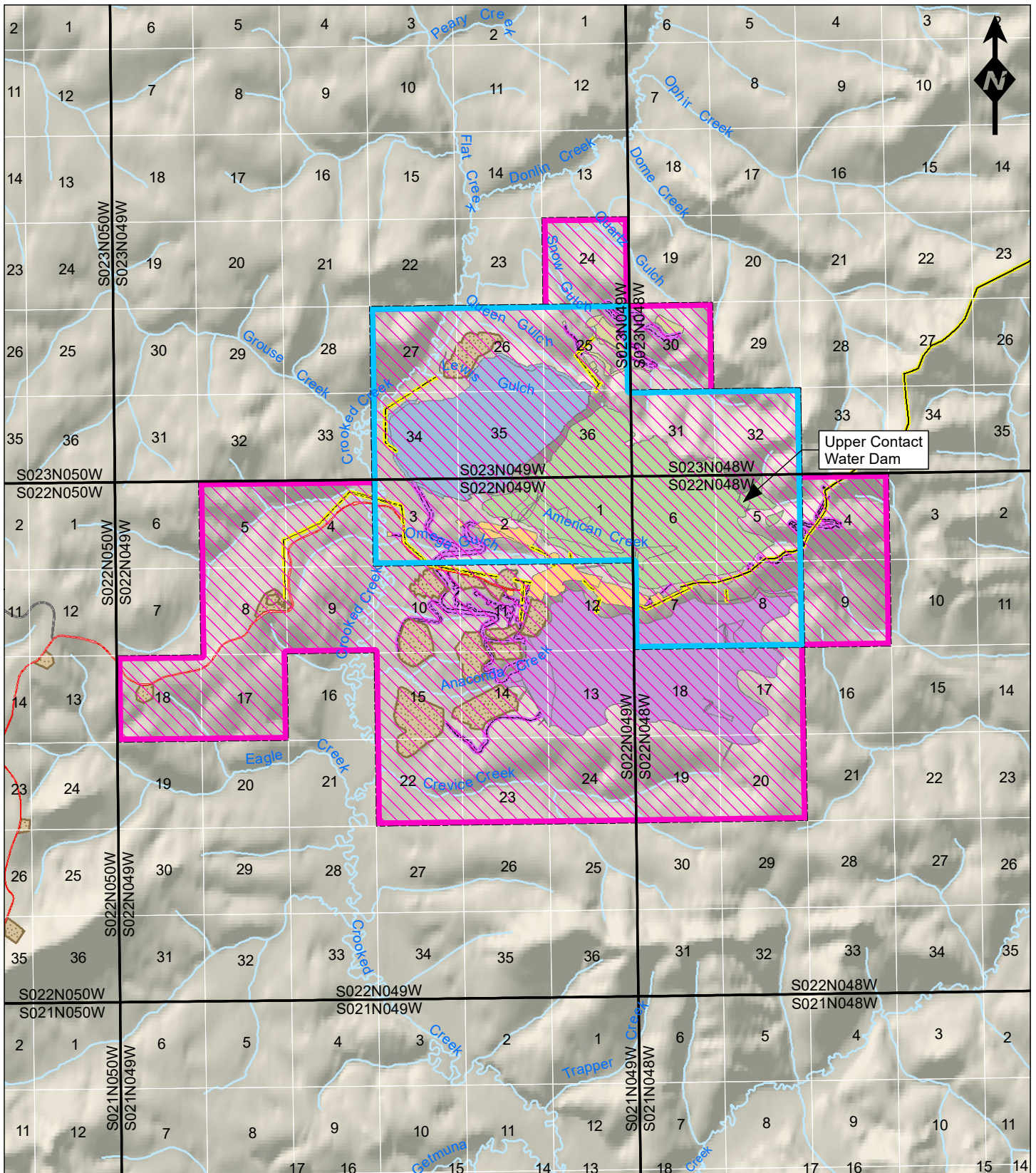
Jungjuk Port Site Wells
 Potable water for Jungjuk port site
 0.55 AFY

Jungjuk Port Site Surface Water - Kuskokwim River
 Dust control, fire training and suppression
 637 AFY

- Stream
- Project Footprint
- Infrastructure Type**
- Port Laydown Area
- Growth Media Stockpile
- Material Site
- Overburden Stockpile

**WATER SOURCE LOCATIONS
 WITH PROJECTED USES
 JUNGJUK PORT AND
 MINE ACCESS ROAD
 DONLIN GOLD PROJECT**





Legend

- | | | |
|-------------------------------|---------------------------|---------------------------|
| LOCATION OF SOURCE | FACILITY | ROADWAY |
| LOCATION OF USE | MATERIAL SOURCE/STOCKPILE | SNOW GULCH |
| PROJECT INFRASTRUCTURE | PIT | TAILINGS STORAGE FACILITY |
| AIRSTRIP | POWERLINE | WASTE ROCK FACILITY |
| DJ-ROAD | NATURAL GAS PIPELINE | |



LAS 29168
Upper Contact Water Dam -
American Creek

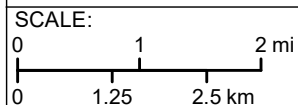
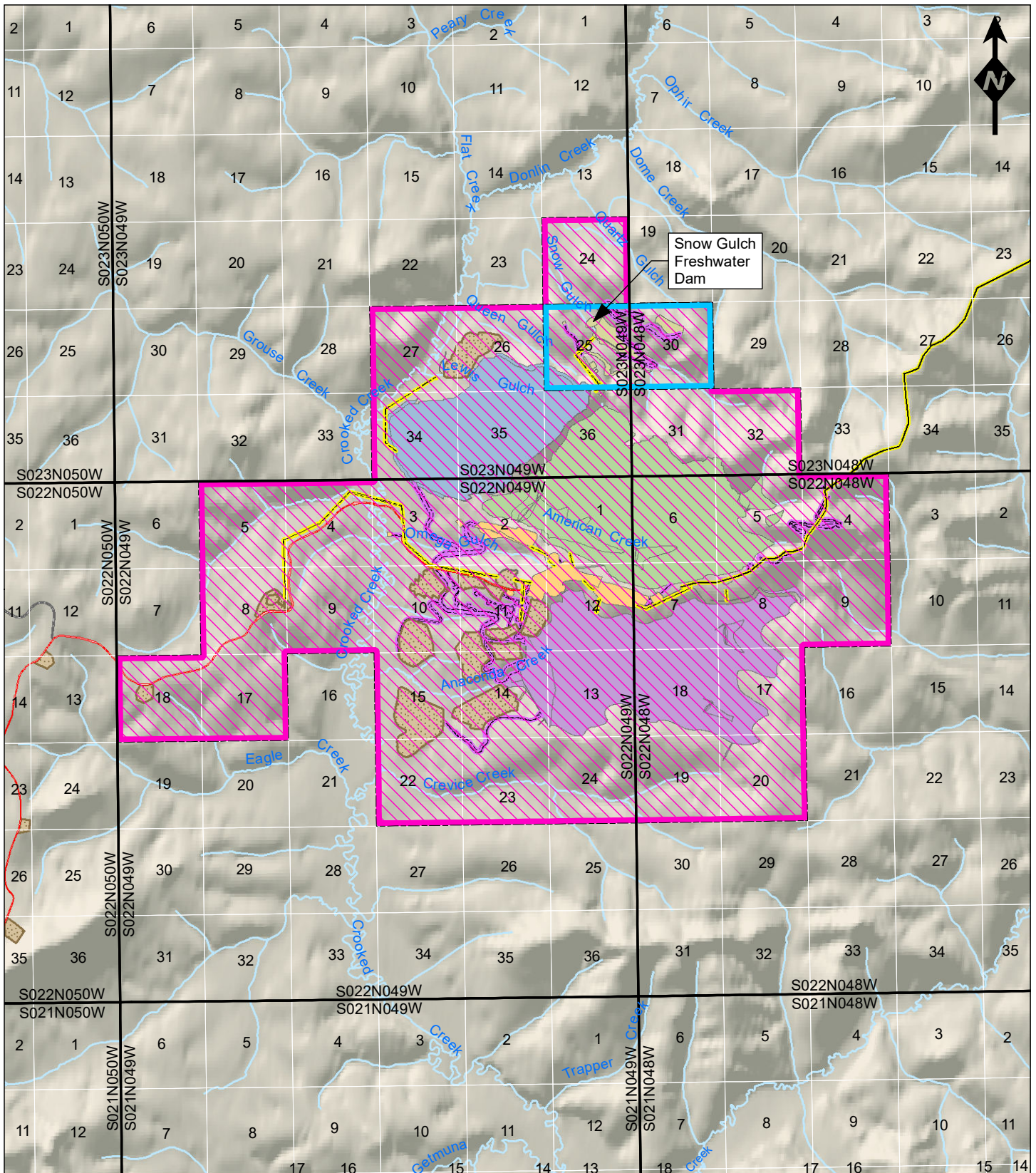


FIGURE:
3



Legend

- | | | | | | |
|-------------------------------|--------------------|--|---------------------------|--|---------------------------|
| | LOCATION OF SOURCE | | FACILITY | | ROADWAY |
| | LOCATION OF USE | | MATERIAL SOURCE/STOCKPILE | | SNOW GULCH |
| PROJECT INFRASTRUCTURE | | | | | |
| | AIRSTRIP | | PIT | | TAILINGS STORAGE FACILITY |
| | DJ-ROAD | | POWERLINE | | WASTE ROCK FACILITY |
| | | | | | NATURAL GAS PIPELINE |



**LAS 29169
Snow Gulch Freshwater Dam**

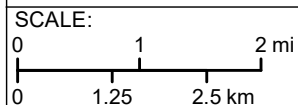
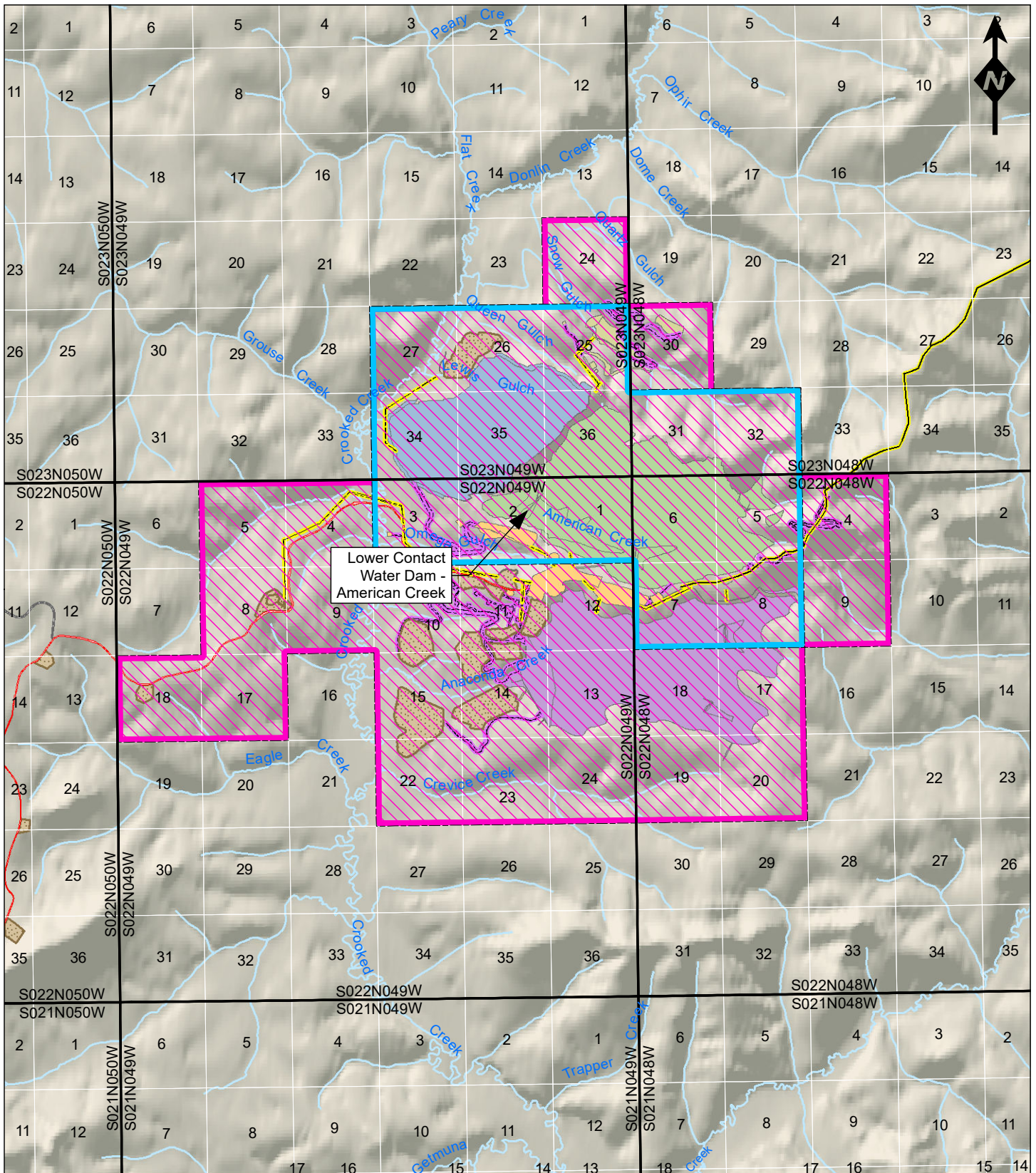


FIGURE:
4



Legend

- | | | |
|-------------------------------|---------------------------|---------------------------|
| LOCATION OF SOURCE | FACILITY | ROADWAY |
| LOCATION OF USE | MATERIAL SOURCE/STOCKPILE | SNOW GULCH |
| PROJECT INFRASTRUCTURE | | |
| AIRSTRIP | PIT | TAILINGS STORAGE FACILITY |
| DJ-ROAD | POWERLINE | WASTE ROCK FACILITY |
| | | NATURAL GAS PIPELINE |



LAS 29170
Lower Contact Water Dam - American Creek

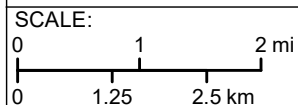
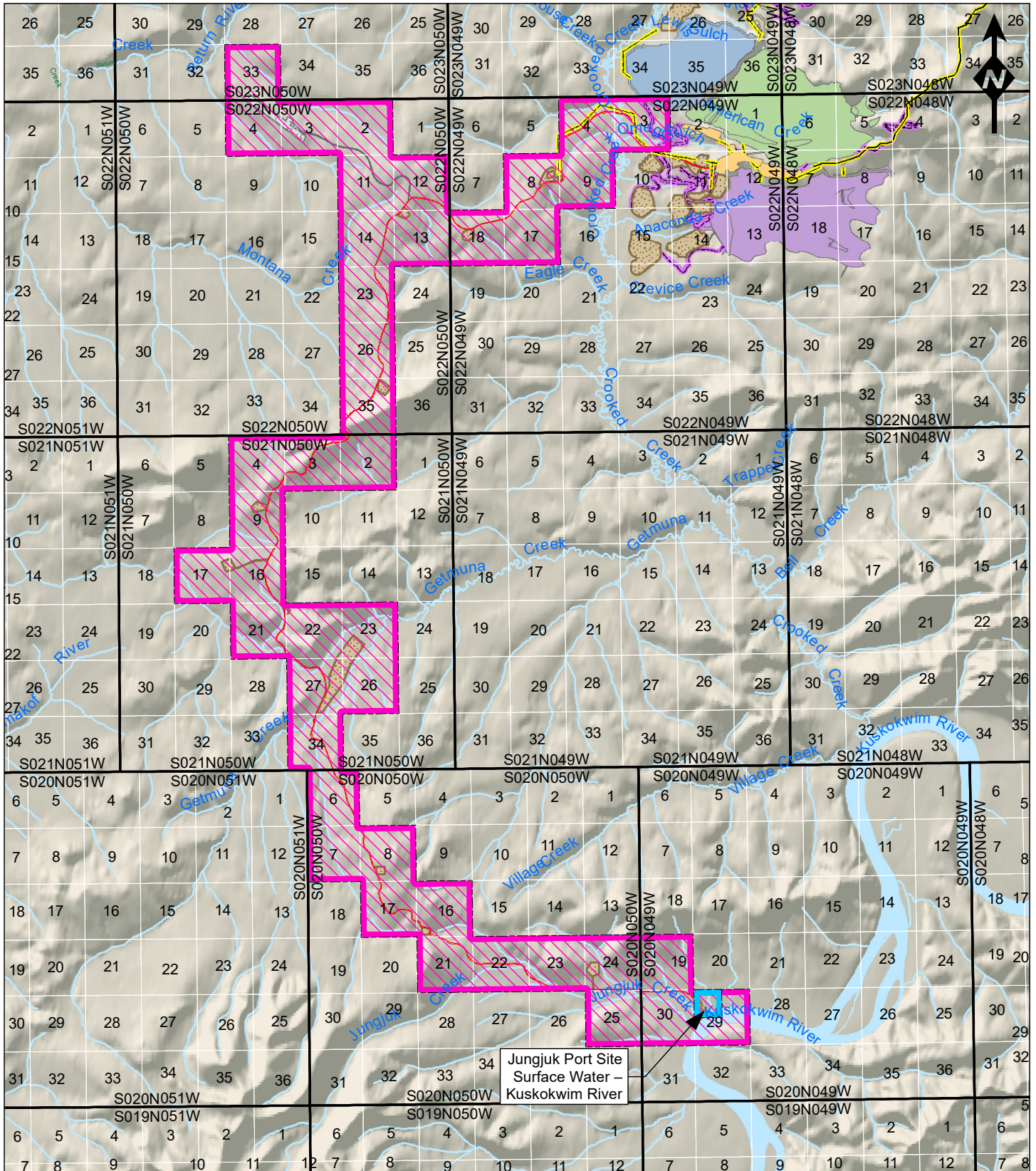


FIGURE:
5



Legend

- | | | |
|-------------------------------|---------------------------|---------------------------|
| LOCATION OF SOURCE | FACILITY | ROADWAY |
| LOCATION OF USE | MATERIAL SOURCE/STOCKPILE | SNOW GULCH |
| PROJECT INFRASTRUCTURE | PIT | TAILINGS STORAGE FACILITY |
| AIRSTRIP | PORT | WASTE ROCK FACILITY |
| DJ-ROAD | POWERLINE | NATURAL GAS PIPELINE |



LAS 29171
Jungjuk Port Site Surface Water - Kuskokwim River

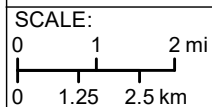
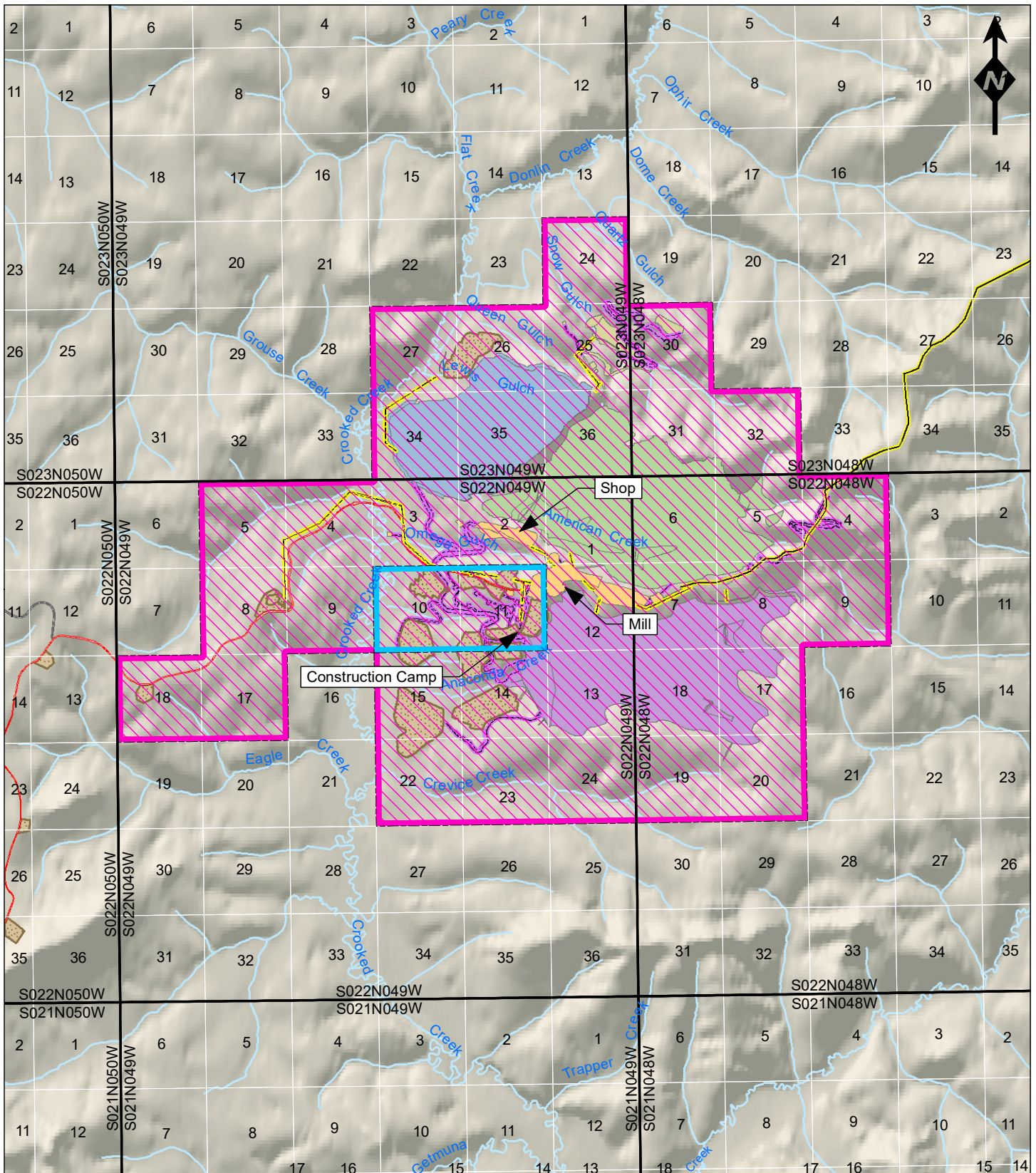


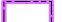


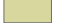









FIGURE:
6



Legend

- | | | | | | |
|---|--------------------|---|---------------------------|---|---------------------------|
|  | LOCATION OF SOURCE |  | FACILITY |  | ROADWAY |
|  | LOCATION OF USE |  | MATERIAL SOURCE/STOCKPILE |  | SNOW GULCH |
| PROJECT INFRASTRUCTURE | | | | | |
|  | AIRSTRIIP |  | PIT |  | TAILINGS STORAGE FACILITY |
|  | DJ-ROAD |  | POWERLINE |  | WASTE ROCK FACILITY |
| | | | |  | NATURAL GAS PIPELINE |



LAS 29172
Constuction Camp, Shop,
Administrative Facilities,
Warehouse, & Mill

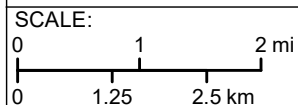
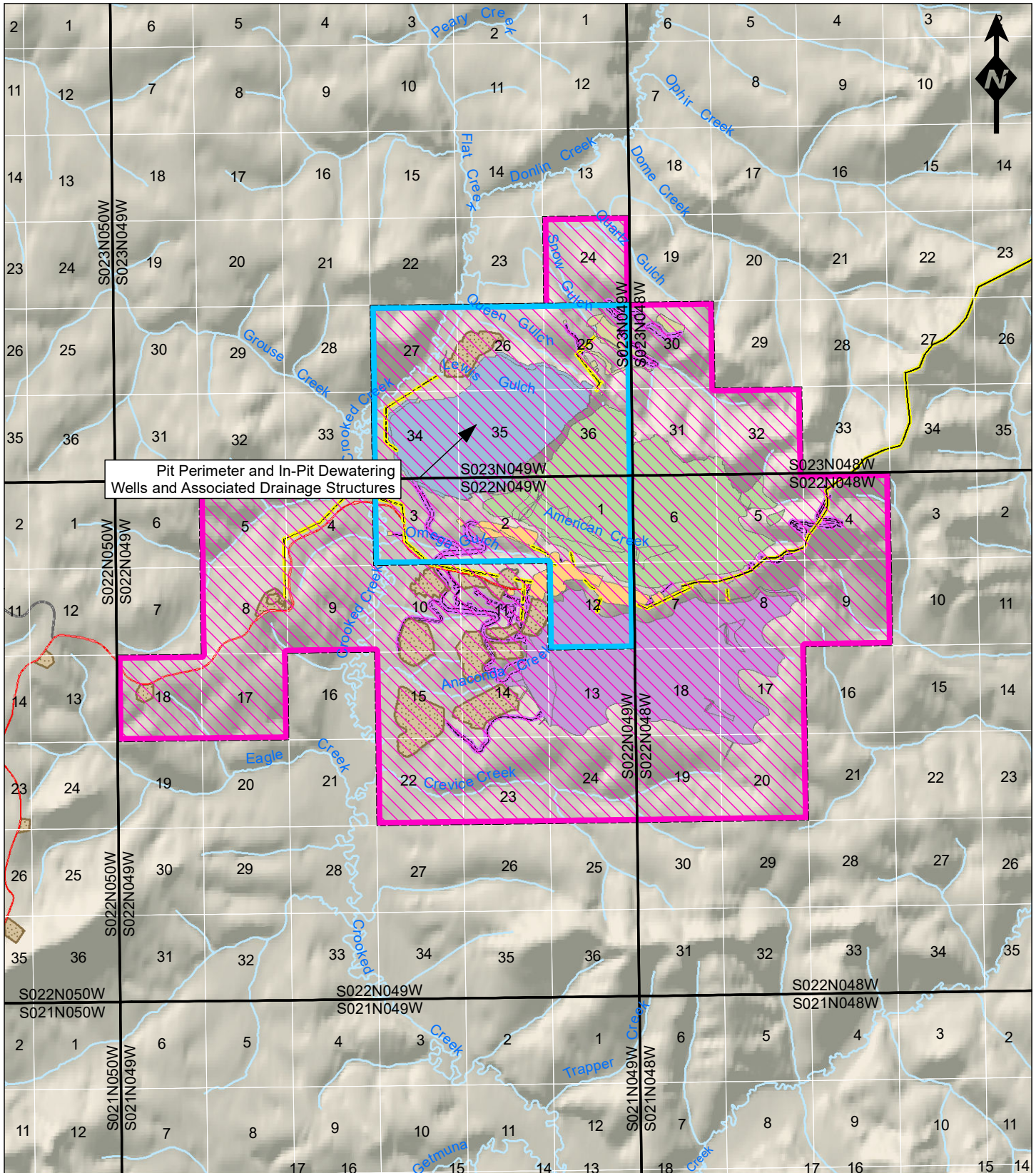






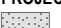


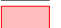





FIGURE:
7



Pit Perimeter and In-Pit Dewatering Wells and Associated Drainage Structures

Legend

- | | | | | | |
|---|--------------------|---|---------------------------|---|---------------------------|
|  | LOCATION OF SOURCE |  | FACILITY |  | ROADWAY |
|  | LOCATION OF USE |  | MATERIAL SOURCE/STOCKPILE |  | SNOW GULCH |
| PROJECT INFRASTRUCTURE | | | | | |
|  | AIRSTRIP |  | PIT |  | TAILINGS STORAGE FACILITY |
|  | DJ-ROAD |  | POWERLINE |  | WASTE ROCK FACILITY |
| | | | |  | NATURAL GAS PIPELINE |



LAS 29173
Pit Perimeter and In-Pit
Dewatering Wells and
Associated Drainage Structures

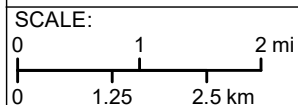
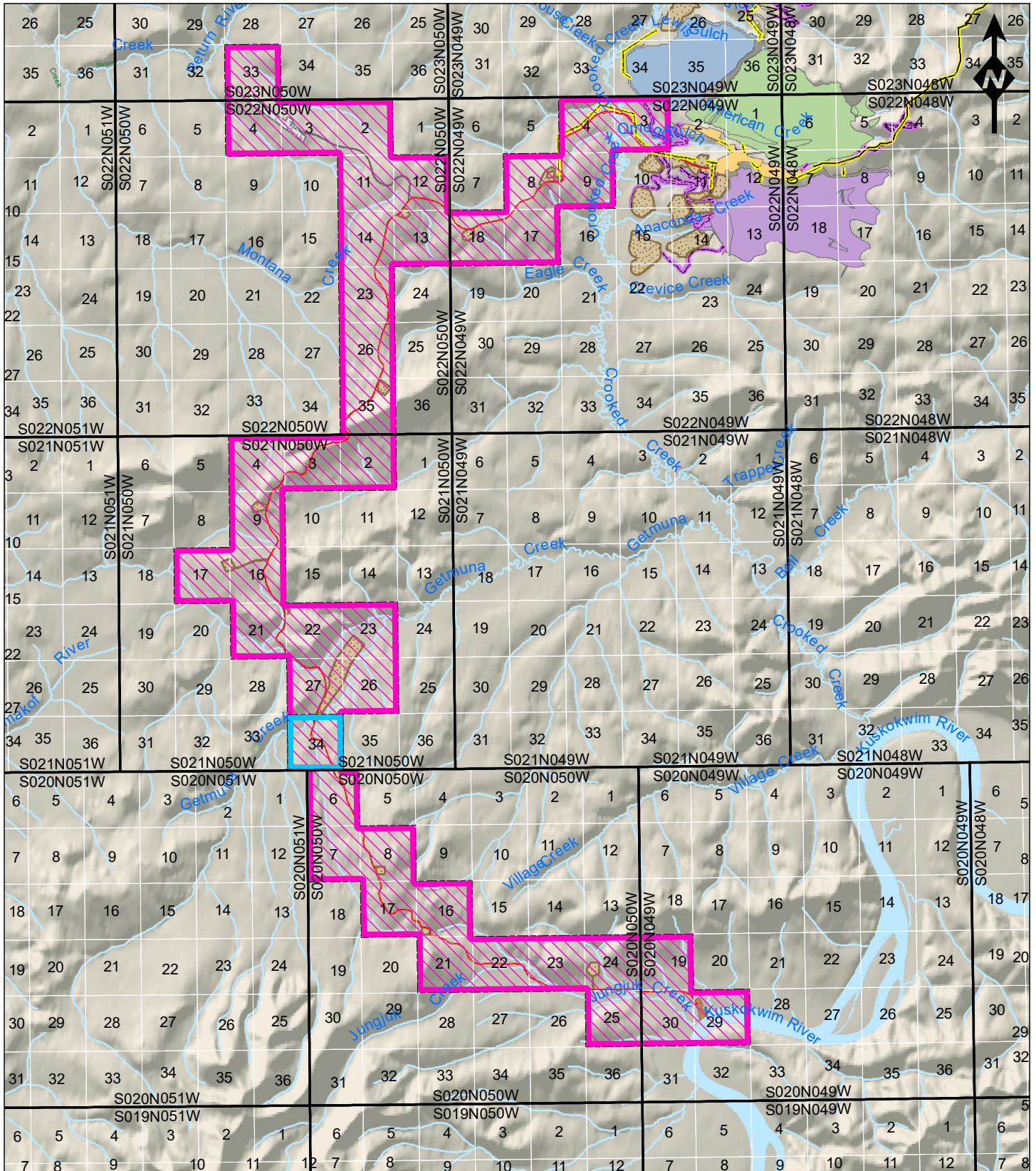


FIGURE:
8



Legend

- | | | |
|-------------------------------|---------------------------|---------------------------|
| LOCATION OF SOURCE | FACILITY | ROADWAY |
| LOCATION OF USE | MATERIAL SOURCE/STOCKPILE | SNOW GULCH |
| PROJECT INFRASTRUCTURE | PIT | TAILINGS STORAGE FACILITY |
| AIRSTRIP | PORT | WASTE ROCK FACILITY |
| DJ-ROAD | POWERLINE | NATURAL GAS PIPELINE |



LAS 29174
Getmuna Creek Surface Water

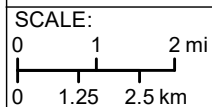
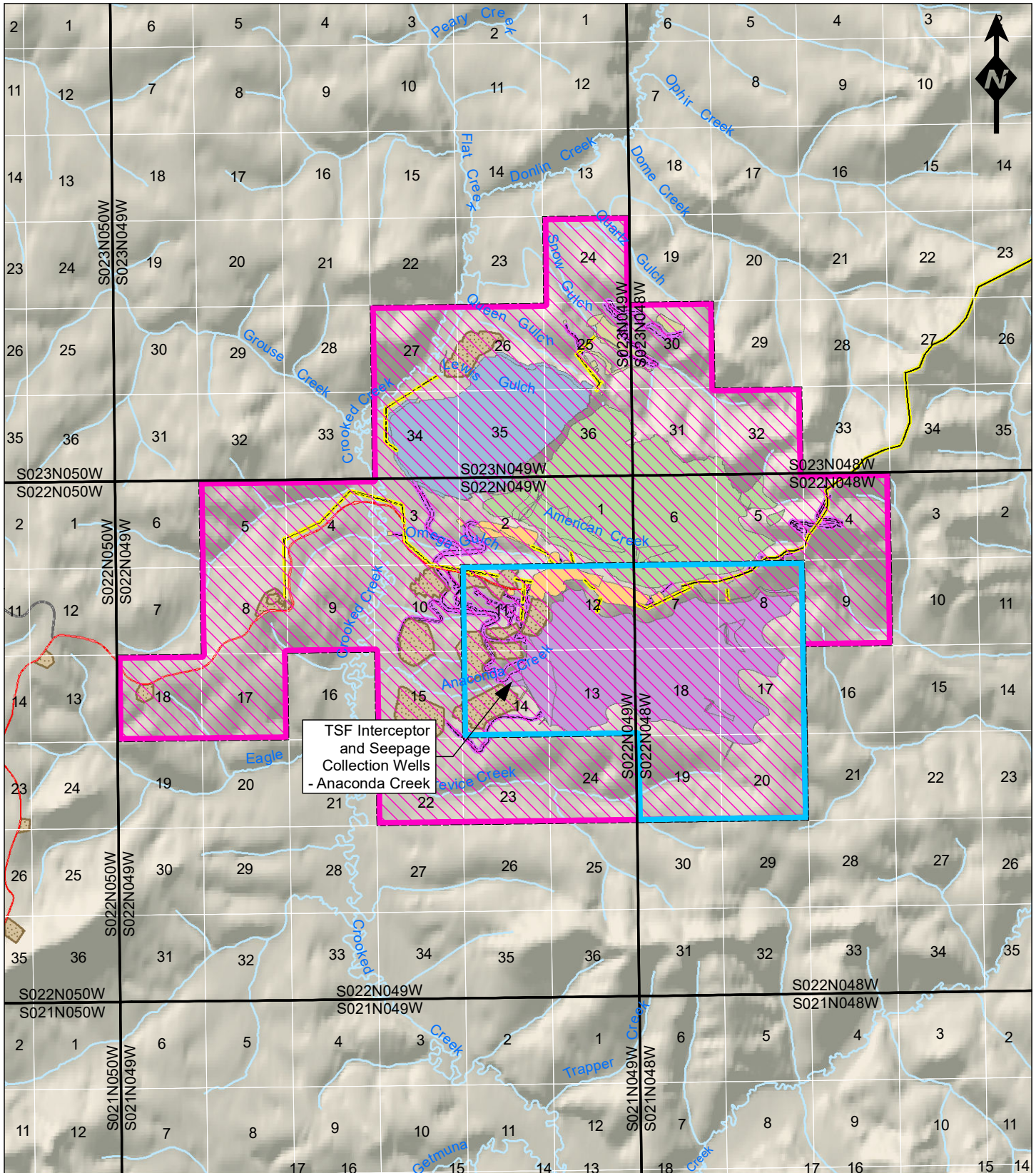


FIGURE:
9



TSF Interceptor and Seepage Collection Wells - Anaconda Creek

Legend

- | | | | | | |
|-------------------------------|--------------------|--|---------------------------|--|---------------------------|
| | LOCATION OF SOURCE | | FACILITY | | ROADWAY |
| | LOCATION OF USE | | MATERIAL SOURCE/STOCKPILE | | SNOW GULCH |
| PROJECT INFRASTRUCTURE | | | | | |
| | AIRSTRIIP | | PIT | | TAILINGS STORAGE FACILITY |
| | DJ-ROAD | | POWERLINE | | WASTE ROCK FACILITY |
| | | | | | NATURAL GAS PIPELINE |



LAS 29175
TSF Interceptor and Seepage Collection Wells - Anaconda Creek

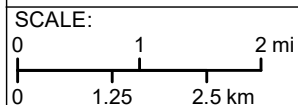
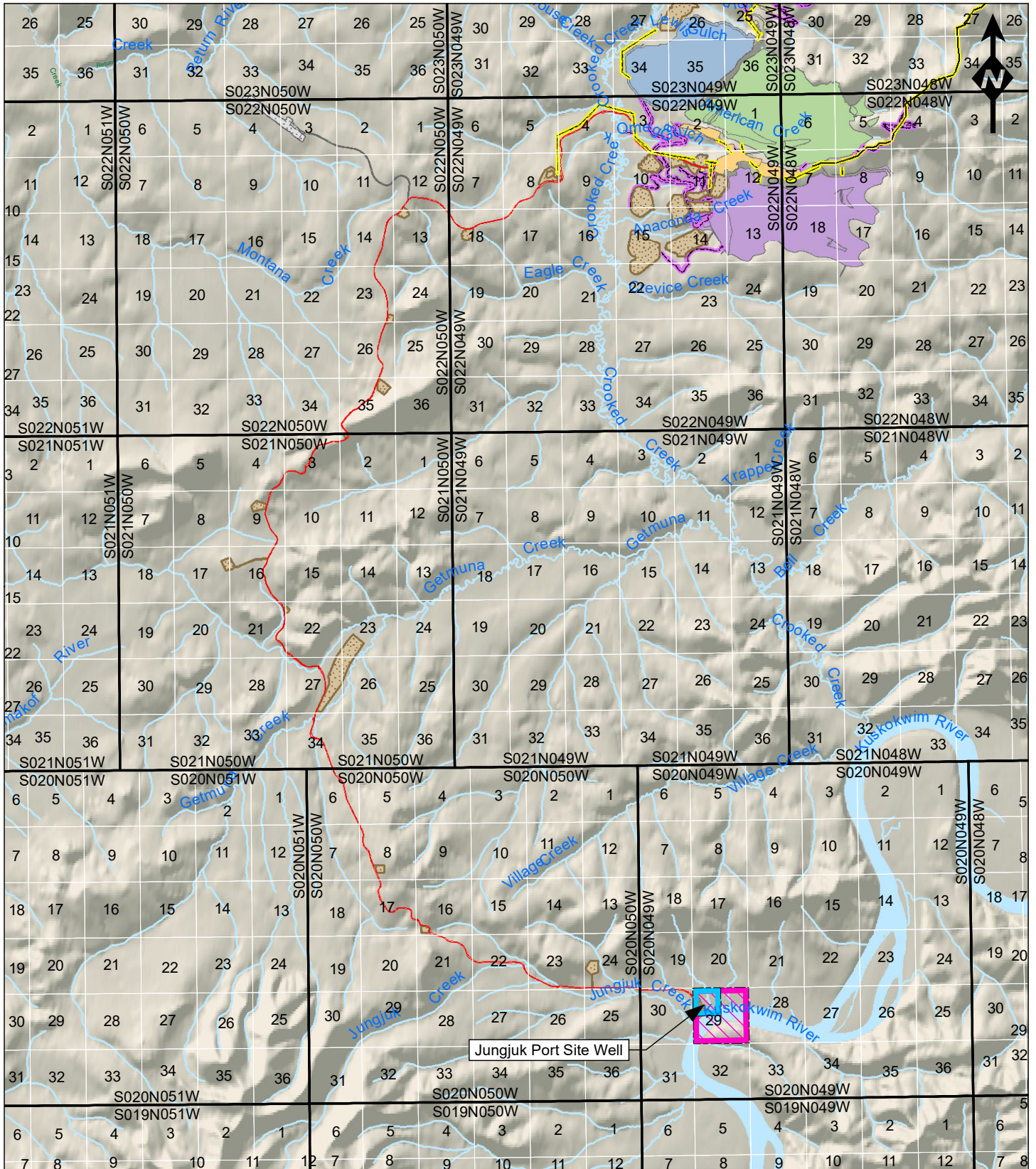


FIGURE:
10



Legend

- | | | |
|-------------------------------|---------------------------|---------------------------|
| LOCATION OF SOURCE | FACILITY | ROADWAY |
| LOCATION OF USE | MATERIAL SOURCE/STOCKPILE | SNOW GULCH |
| PROJECT INFRASTRUCTURE | PIT | TAILINGS STORAGE FACILITY |
| AIRSTRIP | PORT | WASTE ROCK FACILITY |
| DJ-ROAD | POWERLINE | NATURAL GAS PIPELINE |



**LAS 29176
Jungjuk Port Site Well**

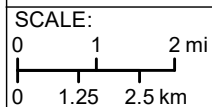
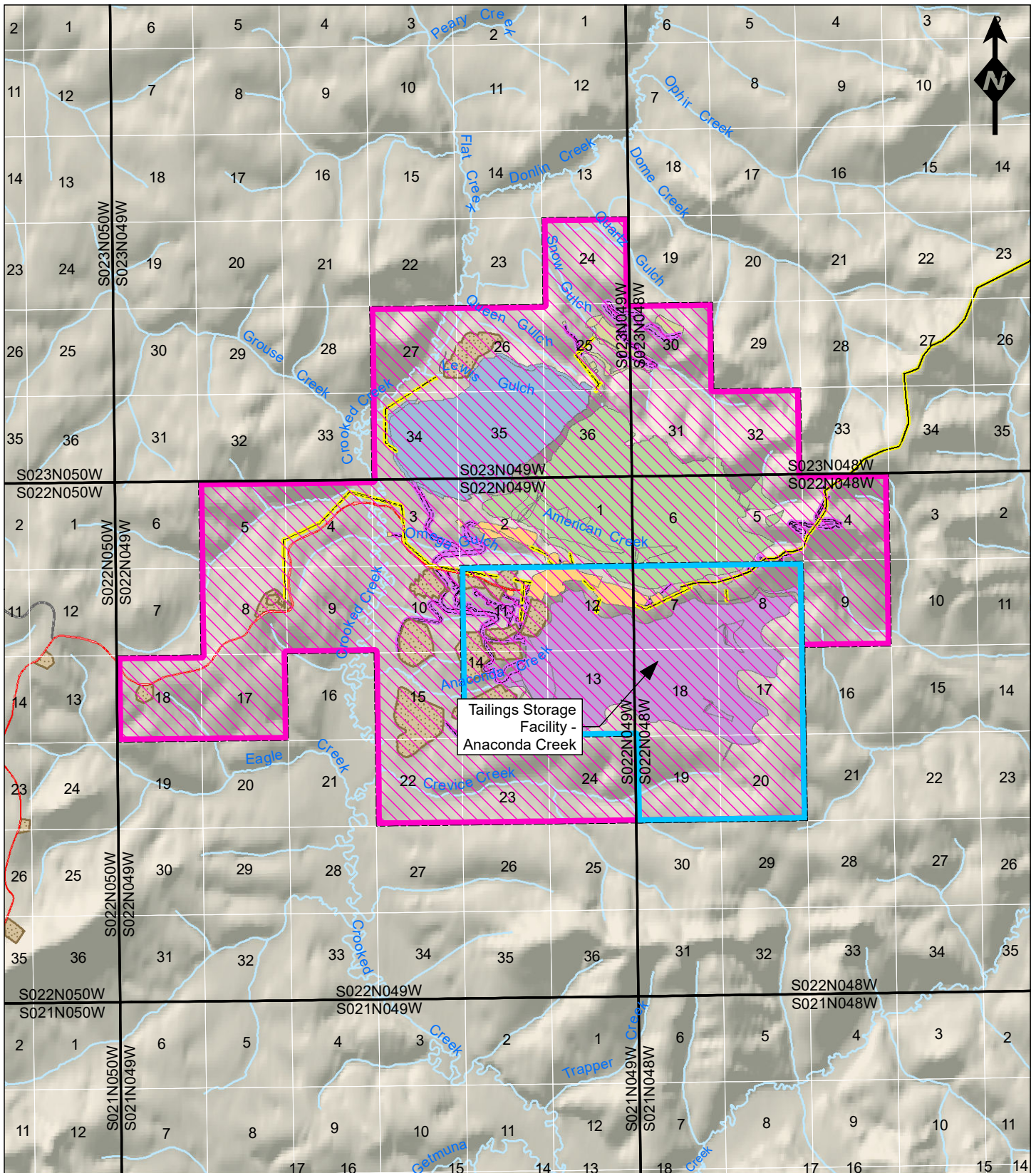


FIGURE:

11



Legend

- | | | |
|-------------------------------|---------------------------|---------------------------|
| LOCATION OF SOURCE | FACILITY | ROADWAY |
| LOCATION OF USE | MATERIAL SOURCE/STOCKPILE | SNOW GULCH |
| PROJECT INFRASTRUCTURE | PIT | TAILINGS STORAGE FACILITY |
| AIRSTRIP | POWERLINE | WASTE ROCK FACILITY |
| DJ-ROAD | | NATURAL GAS PIPELINE |



**LAS 29177
Tailings Storage Facility -
Anaconda Creek**

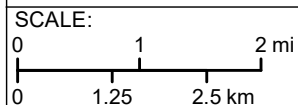
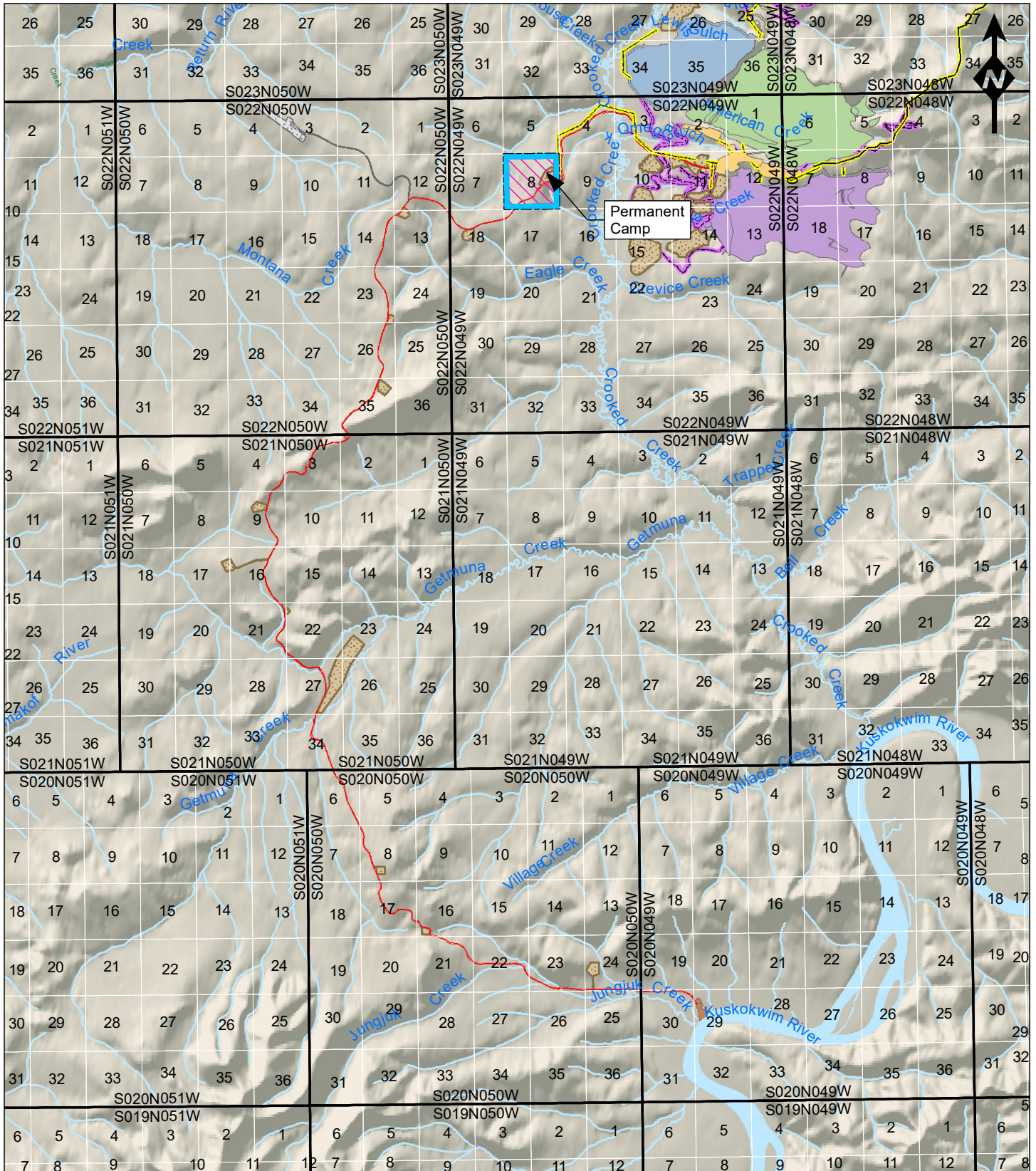


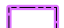



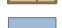

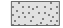







FIGURE:
12



Legend

- | | | |
|--|---|---|
|  LOCATION OF SOURCE |  FACILITY |  ROADWAY |
|  LOCATION OF USE |  MATERIAL SOURCE/STOCKPILE |  SNOW GULCH |
| PROJECT INFRASTRUCTURE |  PIT |  TAILINGS STORAGE FACILITY |
|  AIRSTRIP |  PORT |  WASTE ROCK FACILITY |
|  DJ-ROAD |  POWERLINE |  NATURAL GAS PIPELINE |



LAS 29178
Permanent Camp Potable
Water Well Field

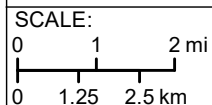
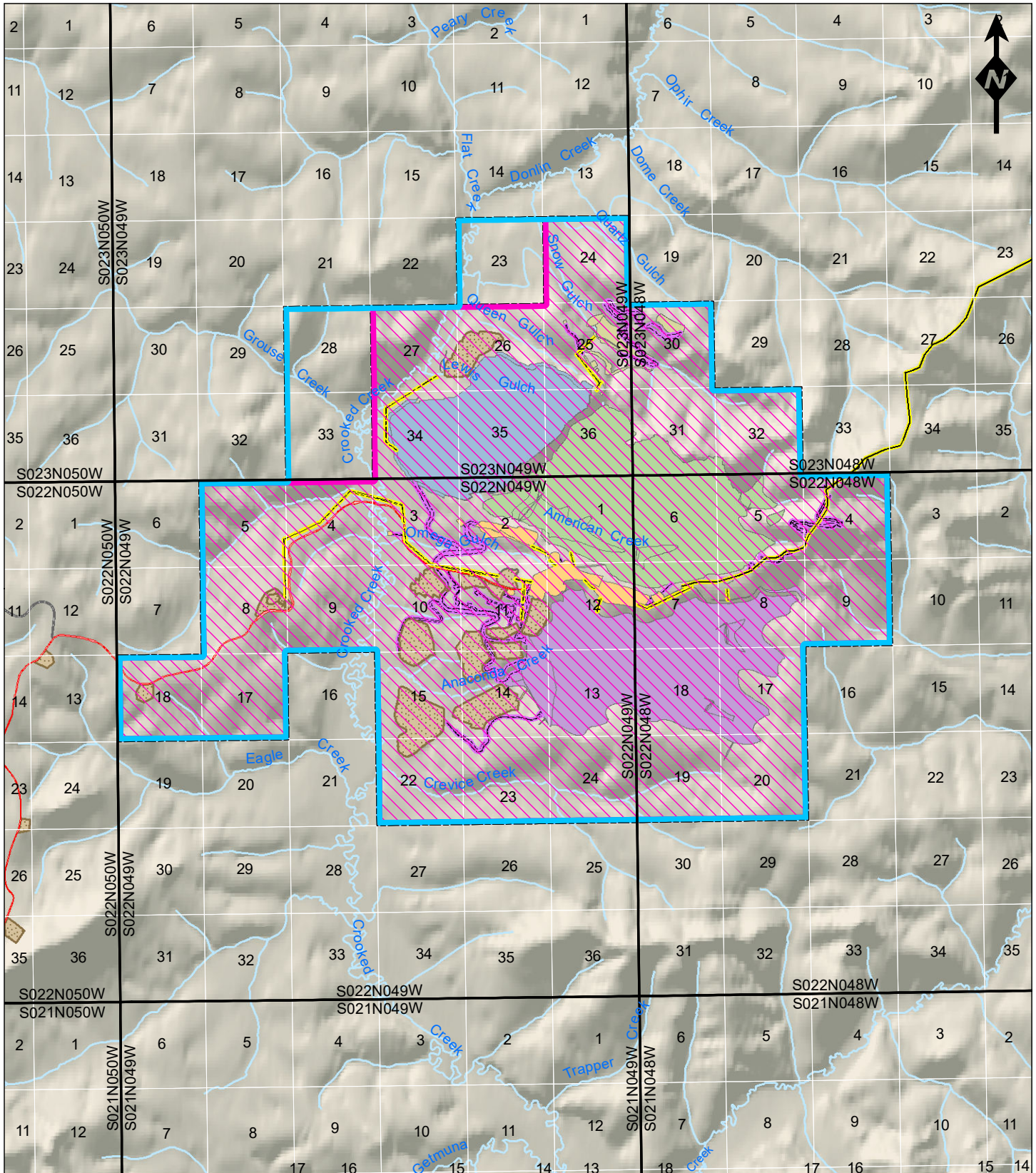


FIGURE:
13



Legend

- | | | | | | | |
|-------------------------------|--------------------|--|---------------------------|-----|----------------------|---------------------------|
| | LOCATION OF SOURCE | | FACILITY | | ROADWAY | |
| | LOCATION OF USE | | MATERIAL SOURCE/STOCKPILE | | SNOW GULCH | |
| PROJECT INFRASTRUCTURE | | | | PIT | | TAILINGS STORAGE FACILITY |
| | AIRSTRIP | | POWERLINE | | WASTE ROCK FACILITY | |
| | DJ-ROAD | | | | NATURAL GAS PIPELINE | |



LAS 31477
Crooked Creek Surface Flows and Associated Diversion Structures

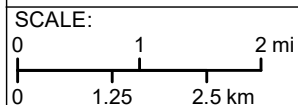


FIGURE:
14