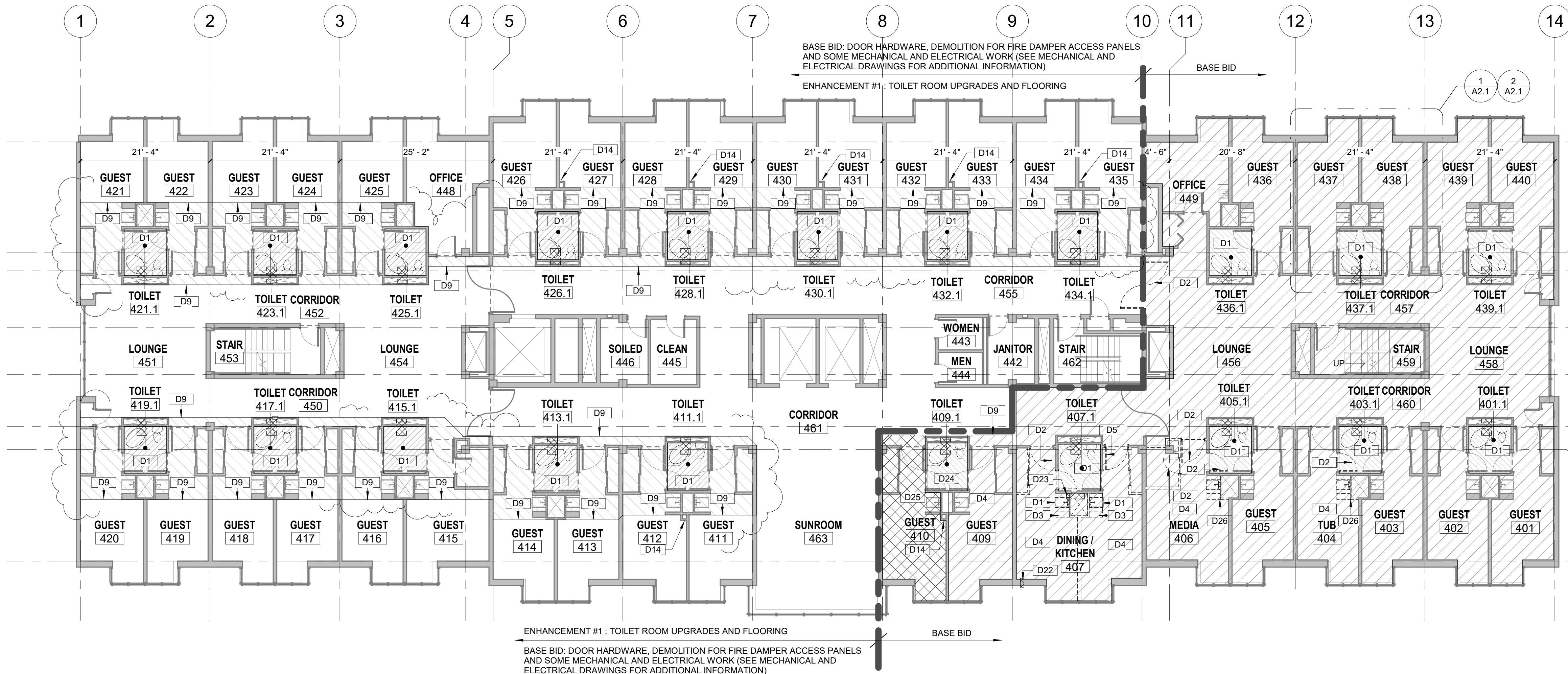


① 3RD FLOOR PLAN - MECHANICAL DEMOLITION COORDINATION
1/16" = 1'-0"



② 4TH FLOOR PLAN - DEMOLITION FLOORS & PLUMBING FIXTURES
3/32" = 1'-0"

DEMOLITION LEGEND

- EXISTING TO REMAIN
- EXISTING TO BE DEMOLISHED/REMOVED
- BASE BID - REMOVE EXISTING CARPET, AND BASE - CLEAN, PATCH AND REPAIR SLAB AS REQUIRED FOR NEW FLOORING
- BASE BID - REMOVE EXISTING RESILIENT SHEET FLOORING AND BASE - CLEAN AND REPAIR SLAB AS REQUIRED FOR NEW FLOORING - REMOVE EXISTING FRP WALL PROTECTION AND WALL MOUNTED ACCESSORIES
- BASE BID - COMPLETE DEMOLITION OF CARPET AND BASE - CLEAN AND PREPARE FLOOR FOR NEW FLOORING
- ENHANCEMENT #1 - REMOVE EXISTING CARPET AND CLEAN, PATCH AND REPAIR SLAB AS REQUIRED FOR NEW FLOORING
- ENHANCEMENT #1 - REMOVE EXISTING RESILIENT SHEET FLOORING AND CLEAN AND REPAIR SLAB AS REQUIRED FOR NEW FLOORING - REMOVE EXISTING FRP WALL PROTECTION AND WALL MOUNTED ACCESSORIES

NOTIFICATION OF POTENTIAL HAZARDS

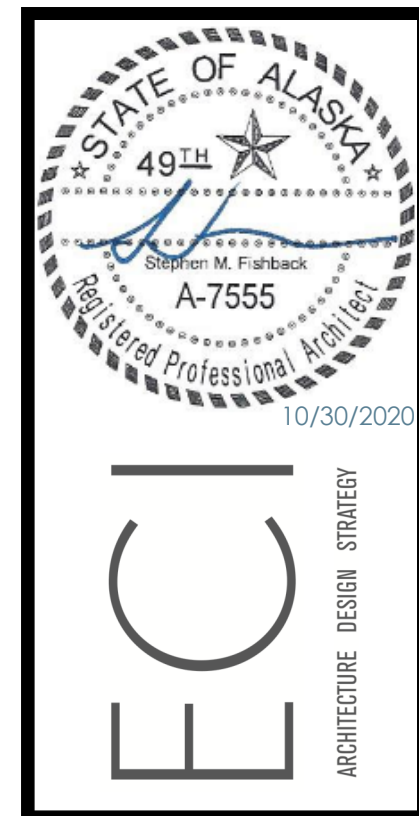
ASBESTOS, LEAD, AND OTHER HAZARDOUS MATERIALS ARE PRESENT IN THE BUILDING AND MAY IMPACT THE WORK OF ALL TRADES. REGULATED AIR CONTAMINATES, INCLUDING ASBESTOS AND LEAD, ARE ALSO PRESENT IN SETTLED AND CONCEALED DUST IN AND ON ARCHITECTURAL, STRUCTURAL, MECHANICAL, AND ELECTRICAL COMPONENTS OR SYSTEMS THROUGHOUT THE BUILDING. ALL TRADES SHALL COORDINATE WITH OTHER TRADES AND CONDUCT THEIR WORK TO PREVENT WORKER EXPOSURE OR SITE CONTAMINATION. REFER TO SPECIFICATION DIVISIONS 0, 1, AND 2 FOR SPECIFIC INFORMATION CONCERNING DISTURBING, REMOVING, AND DISPOSING OF THESE MATERIALS AND THE INSTALLATION OF NEW MATERIALS OR COMPONENTS. THIS NOTIFICATION IS PROVIDED IN ACCORDANCE WITH EPA AND OSHA REQUIREMENTS.

DEMOLITION GENERAL NOTES

- FIELD VERIFY ALL DIMENSIONS AND EQUIPMENT LOCATIONS. NOTIFY ARCHITECT OF DISCREPANCIES BETWEEN THE DOCUMENTS AND FIELD CONDITIONS
- COORDINATE SCOPE OF DEMOLITION WORK WITH NEW CONSTRUCTION - REMOVE EXISTING FINISHES AS REQUIRED TO INSTALL NEW FINISHES AND EQUIPMENT
- REPAIR DEMOLITION PERFORMED IN EXCESS OF THAT REQUIRED. REPAIR, PATCH, AND PAINT AS NEEDED, SURFACES WHICH ARE TO REMAIN BUT HAVE BECOME SOILED OR DAMAGED BY DEMOLITION WORK, TO LIKE NEW CONDITION
- INSPECT PENETRATIONS THROUGH THE FLOOR AND RATED WALL ASSEMBLIES - NOTIFY THE ARCHITECT OF GAPS AND/OR MISSING FIRE STOPPING AT THROUGH PENETRATIONS.
- FIELD VERIFY DOOR UNDER-CUTS AT ALL EXISTING DOORS TO REMAIN. VERIFY THERE IS ADEQUATE CLEARANCE FOR THE DOOR TO OPEN WITH NEW FLOOR FINISHES AND SLOPES. MODIFY EXISTING DOORS AS REQUIRED.

KEYNOTES

- D1 REMOVE EXISTING PLUMBING FIXTURES - SEE MECHANICAL FOR ADDITIONAL DEMOLITION NOTES AND FOR WHICH FIXTURES ARE SALVAGED AND REINSTALLED
- D2 REMOVE EXISTING DOOR & FRAME.
- D3 REMOVE EXISTING CASEWORK.
- D4 REMOVE EXISTING CEILING.
- D5 REMOVE EXISTING DOOR - EXISTING FRAME TO REMAIN
- D6 REMOVE, SALVAGE AND REINSTALL EXISTING SUSPENDED CEILING AS REQUIRED TO INSTALL NEW MECHANICAL SYSTEMS. SEE MECHANICAL DRAWINGS.
- D8 REMOVE GYPSUM BOARD SOFFIT AND WALL AS REQUIRED TO MODIFY EXISTING DUCTWORK AND CONNECT IN NEW DUCTS PER MECHANICAL DRAWINGS. INSTALL NEW 1 HOUR RATED SOFFIT (SHAFTWALL STUD FRAMING) AND PATCH EXISTING WALL TO MAINTAIN EXISTING RATED WALL.
- D9 CUT AND REMOVE EXISTING CARPETING AND BASE AS REQUIRED TO INSTALL NEW FLOORING - PROTECT EXISTING CARPET TO REMAIN - CLEAN AND PREPARE FLOOR SLAB AS REQUIRED FOR TAPERED TOPPING AND FLOORING
- D14 CUT AND REMOVE GYPSUM BOARD AND LIGHT GAGE FRAMING AS REQUIRED TO INSTALL ACCESS PANEL FOR FIRE /SMOKE DAMPER - SEE MECHANICAL DRAWINGS
- D22 CORE DRILL HOLE THROUGH BRICK. REMOVE GYPSUM BOARD AND INSULATION AS NECESSARY TO INSTALL EXHAUST VENT COORDINATE SIZE OF HOLE WITH MECHANICAL
- D23 SAW CUT HOLES AS REQUIRED FOR MECHANICAL DUCTS - SEE MECHANICAL AND STRUCTURAL
- D24 EXISTING PLUMBING FIXTURES HAVE BEEN PARTIALLY REMOVED - COMPLETE REMOVAL AND CLEAN AND PREPARE FOR NEW CONSTRUCTION - SEE MECHANICAL FOR ADDITIONAL DEMOLITION NOTES AND FOR WHICH FIXTURES ARE SALVAGED AND REINSTALLED
- D25 COMPLETE DEMOLITION OF CARPET AND BASE - CLEAN AND PREPARE FLOOR FOR NEW FLOORING
- D26 REMOVE EXISTING CASEWORK AND SINK (LAVATORIES/VANITIES) AS REQUIRED TO INSTALL NEW 1 HOUR SHAFTWALL. REINSTALL CASEWORK AND SINK AS INDICATED



Steve Fishback Architect
3720 Bellanca Way, Unit B, Anchorage, AK 99502
P: (907) 375-5684 E: Steve@fishbackak.com

ANCHORAGE PIONEER HOME
ANC 21-06C RESIDENT RENOVATIONS
923 W 11TH AVE, ANCHORAGE AK 99501

Revisions:
3 - ADD. #4 - 1/4/2021

Drawn By: SP
Checked By: SHC

Date: OCTOBER 30, 2020

Phase: BID SET
Job No:

SHEET TITLE:
DEMOLITION
FLOOR PLANS

SHEET NO:

A2.0