



BAY VIEW TIMBER SALE SSE-1369 K

Timber Cruise

Abstract

Timber Cruise composed of three units located on Settlement and State Forest land collectively referred to as the Bay View Timber Sale SSE-1369 K. Publish 11/16/2020

Southeast Office (DNR-DOF)

Table of Contents

Sample Type/ Frequency	2
Min. Size/ Sorts/ Specifications.	2
Acreage	2
Stratification.....	2
Bay View Timber Sale Area Map.....	3
Bay View Old Growth Cruise Tabular Summaries.....	4
ADNR-DOF Sort and Grade Guidelines	5

Contributing Staff

Mike Cooney

Roy Josephson

Trevor Kauffman

Peter Lucas

Greg Palmieri

Greg Staunton

Bay View Timber Sale Cruise Report

November 16, 2020

This report is a compilation of information summarizing the estimation of timber volume and quality in the Bay View Timber Sale SSE-1369 K on State land on Prince of Wales Island near the community of Thorne Bay. The timber cruise is for the three larger units delineated in the Forest Land Use Plan (FLUP) adopted October 21, 2020 (Units 1, 2, and 3).

The stand was sampled as one type, predominately old growth timber. On the east side and areas adjacent to saltwater, the age class has intermixed young growth; the extent of this was observed to be minor and not discrete. For this report, young growth sampled in the cruise is associated with merchantable size timber that was inferred by the cruiser to be less than 100 years old. The area to the south of the stand was logged from saltwater in the mid 1950's; the young growth observed is a product of that activity and other stand disturbance related to that harvest. Residual old growth areas occupy the bulk of the sale as represented.

Sample Type/ Frequency

The units were cruised during the fall of 2019 by DOF using a variable plot cruise sampling method based on an unbiased grid system. The grid was spaced on 2 x 5 chains representing one acre per cruise plot. This combined sampling produced 541 cruise plots over 574 acres. The Atterbury Cruise Program was used to manage the data. A 40 basal area factor (BAF) at 16 feet above projected stump height was used to sample trees. Merchantable trees were measured. This produced an overall average of 5.1 trees sampled per plot.

Min. Size/ Sorts/ Specifications.

Only trees containing a minimum merchantable saw log were sampled. Diameters measuring under 12 inches at four feet above stump height were typically not recorded. Obvious cull trees were likewise not consistently recorded by the cruisers. Logs not meeting DOF saw log sorts were recorded as pulp logs with the minimum size being a #4 saw log. Log grades were determined using Official Log Scaling and Grading Rules for the Pacific Northwest as applied and accepted in the Southeast Alaska region. Sorts are based on characteristics traditionally applied to Southeast Alaska timber in the domestic and export markets. See attached ADNR-DOF Old Growth and Second Growth Sort Guidelines for Southeast Alaska. Utility logs were recorded if they appeared to have 50% sound usable chips.

Acreage

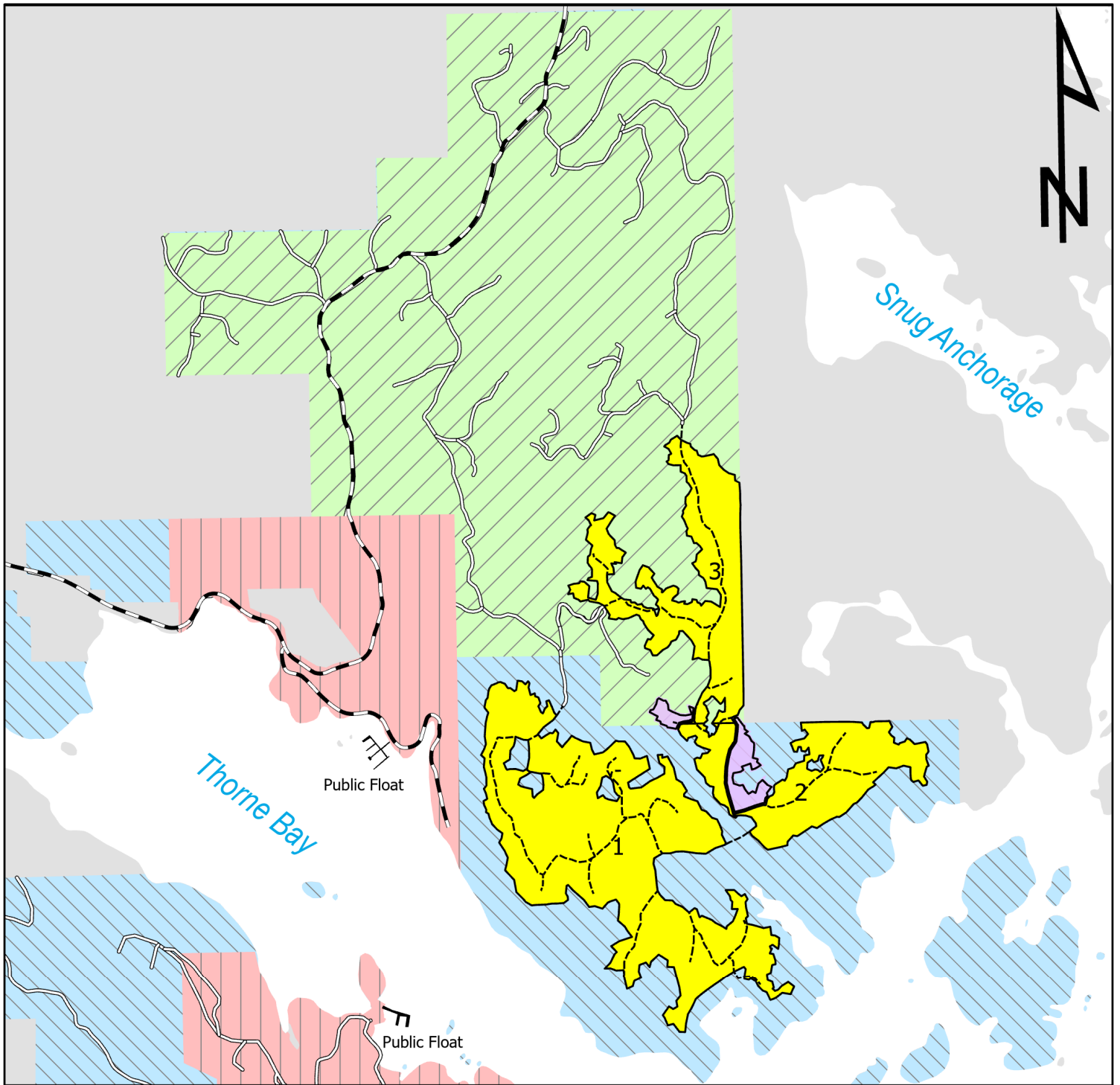
Cruised acreage was determined using ArcGIS, based off traverse points collected along the harvest unit line using a GIS grade GPS receiver that was restricted to sampling positions when theoretical post processed accuracy was predicted to be less than 10 feet. The GPS data was post processed.

Stratification

The timber was not stratified by timber type based on stand characteristics. The cruise reports were delineated using the type field to represent the three units portrayed in the FLUP (Unit 1, Unit 2, and Unit 3; respectively Types 099W, 099E, and 099N). Type 099A represents the entire timber sale (all three units) and is at the front of tabular summaries. The adjacent small sale units listed in the FLUP are not included in this report.

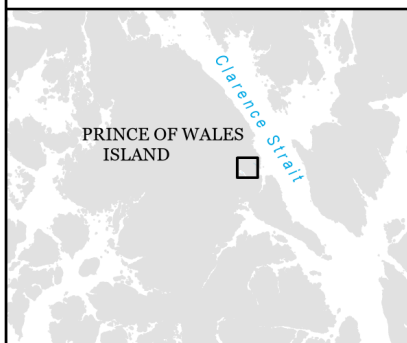
Bay View Timber Sale Area Map

(1 page)

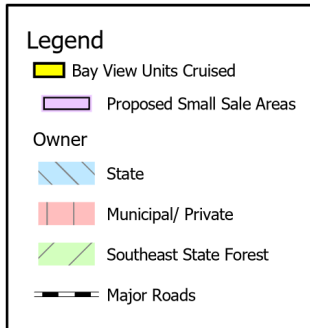


0 0.25 0.5 1 Miles

Township 71S, Range 84E
Copper River Meridian



Vicinity Map: 1 inch = 36 miles



**APPENDIX A1
SSE-1369 K
Bay View Timber Sale
Area Map**



DIVISION OF FORESTRY

Bay View Old Growth Cruise Tabular Summaries

(Atterbury Program Reports, 15 Pages)

Board Foot Volumes and Statistical Type Reports

Type 99A	Tract: Large All (Units 1, 2, 3 combined)
Type 99W	Tract West_All (Unit 1)
Type 99 E	Tract: East_All (Unit 2)
Type 99N	Tract: North_All (Unit 3)

T71S R84E S27 T099A										T71S R84E S27 T099A				
Twp	Rge	Sec	Tract	Type	Acres	Plots	Sample Trees	CuFt	BdFt					
71S	84E	27	LARGE_ALL	099A	574.00	541	2,770	S	W					

Spp	S	So	Gr	%	Bd. Ft. per Acre			Total	Percent Net Board Foot Volume								Average Log				Logs Per /Acre		
									Net	Def%	Gross	Net	Net MBF	Log Scale Dia.				Log Length				Ln	Dia
					4-5	6-11	12-16							17+	12-20	21-30	31-35	36-99	Ft	In			
RC	SC	3S		6	1.4	907	894	513	44	42	13		6	26	68	35	10	150	1.33	6.0			
RC	SC	4S			1.6	61	60	35	100				5	57	37	27	6	36	0.53	1.7			
RC	L	3S		9	24.8	1,527	1,148	659			100	18	57	13	12	25	28	694	6.62	1.7			
RC	L	2R			24.5	87	66	38			100	21	25	29	25	29	35	1178	9.33	.1			
RC	M	3S		36	6.6	5,235	4,889	2,806		17	83	1	34	26	38	32	19	482	3.43	10.1			
RC	M	1R			1.8	74	73	42			100		47	32	21	30	35	1616	9.83	.0			
RC	M	2R		6	6.3	890	834	479			100		40	25	34	31	28	1029	6.68	.8			
RC	RC	3S		40	14.1	6,280	5,394	3,096	21	31	48	5	21	20	54	33	12	199	2.03	27.1			
RC	RC	4S		3	8.3	415	381	218	100	0		31	54	14	1	23	7	31	0.64	12.2			
RC	Totals			51	11.2	15,476	13,739	7,886	14	21	65	5	30	22	43	30	13	230	2.13	59.7			
WH	SH	2S			39.3	12	7	4			100		100			24	24	370	4.04	.0			
WH	D	3S		22	9.5	1,875	1,696	973	89	10	1	2	10	16	72	36	8	84	0.78	20.1			
WH	D	4S		7	8.4	500	458	263	100			16	56	18	10	25	6	34	0.52	13.4			
WH	HI	1S			1.7	45	45	26			100			29	71	35	25	993	4.24	.0			
WH	J	2S		3	4.9	247	235	135			100		33	22	44	31	18	421	2.48	.6			
WH	J	S		1	6.1	13	12	7			100			100		33	19	460	2.43	.0			
WH	K	2S		34	10.6	2,903	2,596	1,490	0	63	37	1	12	14	72	34	14	255	1.76	10.2			
WH	K	3S		6	11.5	491	434	249		78	22	5	15	17	63	32	14	216	1.64	2.0			
WH	RS	1S				15	15	9			100			100		33	28	1200	5.48	.0			
WH	RS	2S		5	12.7	359	313	180			100	6	20	31	43	31	20	487	3.30	.6			
WH	PU	3S		2	10.7	210	187	108	60	32	8		3	6	91	38	9	123	1.04	1.5			
WH	PU	4S		1	2.2	62	61	35	100			29	67	5		23	6	30	0.49	2.0			
WH	PU	U		19	17.8	1,668	1,371	787	53	19	28	9	19	6	65	29	8	75	0.84	18.3			
WH	Totals			28	11.5	8,399	7,430	4,265	39	33	28	4	17	14	64	31	9	108	0.98	68.8			
SS	SH	1S			20.3	30	24	14			100		53	47		29	36	1342	8.99	.0			
SS	SH	2S		1	36.7	119	76	43			100			31	69	37	33	1227	8.09	.1			
SS	SH	3S		1	22.5	16	13	7			100			100		32	31	1100	5.41	.0			
SS	SH	SL			25.0	22	17	10			100			100		40	46	2970	13.15	.0			
SS	D	3S		5	6.5	289	271	155	59	39	3	7	20	12	61	32	10	110	1.11	2.5			
SS	D	4S		1	2.6	37	36	21	100			50	45	5		21	7	33	0.67	1.1			
SS	HI	1S		9	5.0	470	446	256			100		19	30	51	33	32	1511	7.12	.3			
SS	HI	2S		1	10.7	54	48	27			100		23		77	36	29	1225	5.71	.0			
SS	HI	S			22.2	17	13	7			100			100		33	21	490	2.91	.0			
SS	HI	SL		1	5.5	53	50	29			100		25	35	40	31	43	2648	11.54	.0			
SS	J	1S		2	5.4	108	102	59			100	11	12		78	34	33	1563	7.16	.1			
SS	J	2S		14	1.8	687	675	387			100		18	25	57	35	23	785	3.42	.9			
SS	J	S		2	5.5	92	87	50			100		15	16	69	35	26	1036	4.28	.1			
SS	K	2S		34	7.6	1,852	1,711	982		23	77	3	13	13	72	35	18	484	2.62	3.5			
SS	K	3S		3	8.1	189	174	100		42	58	5	25	18	53	33	16	308	2.20	.6			
SS	RS	1S		3	7.4	169	157	90			100		9	46	46	35	32	1460	6.41	.1			
SS	RS	2S		17	10.4	943	845	485			100		27	37	37	32	28	1054	5.51	.8			

T TSPCSTGR	Species, Sort Grade - Board Foot Volumes (Type)										Page 2									
Project: BAYVIEWG										Date 11/17/2020										
										Time 9:19:16AM										
T71S R84E S27 T099A										T71S R84E S27 T099A										
Twp	Rge	Sec	Tract	Type	Acres	Plots	Sample Trees	CuFt	BdFt											
71S	84E	27	LARGE_ALL	099A	574.00	541	2,770	S	W											
S Spp	So T	Gr rt ad	% Net BdFt	Bd. Ft. per Acre			Total Net MBF	Percent Net Board Foot Volume								Average Log				Logs Per /Acre
				Def%	Gross	Net		Log Scale Dia.				Log Length				Ln	Dia	Bd	CF/ Lf	
4-5	6-11	12-16	17+	12-20	21-30	31-35	36-99	Ft	In	Ft	Lf									
SS	PU	3S	1	11.8	59	52	30	42	22	36	11	20	69	28	11	152	1.33	.3		
SS	PU	4S			1	1	1	100				100		24	7	40	0.83	.0		
SS	PU	U	5	14.5	249	213	122	12	8	79	12	13	3	72	28	12	220	1.77	1.0	
SS	Totals		19	8.2	5,458	5,010	2,876	5	12	83	3	18	21	59	32	16	439	2.59	11.4	
YC	YC	2S	29	8.5	208	190	109		45	55		21	27	52	34	16	327	2.52	.6	
YC	YC	3S	59	9.4	431	390	224	49	43	8	1	10	21	68	36	9	115	1.11	3.4	
YC	YC	4S	12	11.6	84	74	42	92		8	20	57	8	15	25	6	34	0.59	2.2	
YC	Totals		2	9.4	722	654	375	40	39	22	3	19	21	57	32	9	106	1.11	6.1	
S	G	2S	9		11	11	6		100				100	38	12	203	1.39	.1		
S	G	3S	42		46	46	26	58	42				100	37	10	121	0.93	.4		
S	CS	3S	4		3	3	2	100					100	36	6	60	0.49	.1		
S	ST	2S	29		31	31	18		100				100	39	19	598	2.46	.1		
S	PU	4S			1	1	1	100			100			17	6	20	0.49	.0		
S	O	2S	16		16	16	9		100				100	39	24	980	3.86	.0		
S	Totals		0		108	108	62	28	28	44	1		99	36	10	180	1.15	.6		
HM	G	3S	70		47	47	27	78	22				100	39	8	100	0.68	.5		
HM	CS	3S	27		18	18	10	100					100	36	8	80	0.54	.2		
HM	PU	4S	3		2	2	1	100			100			25	6	30	0.49	.1		
HM	Totals		0		66	66	38	84	16		2		98	37	8	89	0.63	.7		
Type Totals				10.7	30,229	27,008	15,503	20	23	57	4	24	20	52	31	11	183	1.57	147.5	

TC TSTATS				STATISTICS				PAGE	1	
				PROJECT	BAYVIEWG			DATE	11/17/2020	
TWP	RGE	SECT	TRACT	TYPE	ACRES	PLOTS	TREES	CuFt	BdFt	
71S	84E	27	LARGE ALL	099A	574.00	541	2,770	S	W	
				TREES	ESTIMATED	PERCENT				
				PER PLOT	TOTAL	SAMPLE				
				PLOTS	TREES	TREES	TREES			
TOTAL		541	2770	5.1						
CRUISE		538	2770	5.1	62,636		4.4			
DBH COUNT										
REFOREST										
COUNT										
BLANKS		3								
100 %										
STAND SUMMARY										
	SAMPLE	TREES	AVG	BOLE	REL	BASAL	GROSS	NET	GROSS	NET
	TREES	/ACRE	DBH	LEN	DEN	AREA	BF/AC	BF/AC	CF/AC	CF/AC
RCDR OG	1,558	42.0	26.4	55	31.1	159.6	15,476	13,739	3,875	3,873
W HMLK	857	53.1	17.0	51	20.2	83.2	8,399	7,430	2,124	2,120
S SPRUCE	214	6.1	24.6	68	4.1	20.2	5,458	5,010	939	939
Y CDR	126	6.8	18.5	51	3.0	12.8	722	654	218	218
SPRC SG	8	.4	17.4	64	0.2	.7	108	108	25	25
HMLK SG	7	.7	13.3	55	0.2	.7	66	66	17	17
TOTAL	2,770	109.1	21.6	53	59.7	277.3	30,229	27,008	7,198	7,192
CONFIDENCE LIMITS OF THE SAMPLE										
68.1 TIMES OUT OF 100 THE VOLUME WILL BE WITHIN THE SAMPLE ERROR										
CL: 68.1 %	COEFF	SAMPLE TREES - BF				# OF TREES REQ.		INF. POP.		
SD: 1.0	VAR.%	S.E.%	LOW	AVG	HIGH	5	10	15		
RCDR OG	113.7	2.9	571	588	605					
W HMLK	127.2	4.3	239	250	261					
S SPRUCE	99.2	6.8	1,536	1,648	1,759					
Y CDR	150.2	13.4	153	176	200					
SPRC SG	92.0	34.7	274	419	564					
HMLK SG	49.2	20.0	83	104	125					
TOTAL	144.6	2.7	530	545	560	835	209	93		
CL: 68.1 %	COEFF	SAMPLE TREES - CF				# OF TREES REQ.		INF. POP.		
SD: 1.0	VAR.%	S.E.%	LOW	AVG	HIGH	5	10	15		
RCDR OG	94.5	2.4	149	152	156					
W HMLK	103.3	3.5	63	65	68					
S SPRUCE	88.9	6.1	275	293	310					
Y CDR	129.4	11.5	47	53	59					
SPRC SG	70.9	26.7	61	83	105					
HMLK SG	54.2	22.0	21	28	34					
TOTAL	114.0	2.2	128	131	134	519	130	58		
CL: 68.1 %	COEFF	TREES/ACRE				# OF PLOTS REQ.		INF. POP.		
SD: 1.0	VAR.%	S.E.%	LOW	AVG	HIGH	5	10	15		
RCDR OG	101.0	4.3	40	42	44					
W HMLK	94.0	4.0	51	53	55					
S SPRUCE	246.9	10.6	5	6	7					
Y CDR	320.8	13.8	6	7	8					
SPRC SG	1063.8	45.7	0	0	1					
HMLK SG	1599.6	68.7	0	1	1					
TOTAL	61.7	2.7	106	109	112	152	38	17		
CL: 68.1 %	COEFF	BASAL AREA/ACRE				# OF PLOTS REQ.		INF. POP.		
SD: 1.0	VAR.%	S.E.%	LOW	AVG	HIGH	5	10	15		
RCDR OG	70.8	3.0	155	160	164					
W HMLK	84.2	3.6	80	83	86					
S SPRUCE	174.0	7.5	19	20	22					
Y CDR	266.2	11.4	11	13	14					

TC TSTATS				STATISTICS				PAGE	2	
				PROJECT	BAYVIEWG			DATE	11/17/2020	
TWP	RGE	SECT	TRACT	TYPE	ACRES		PLOTS	TREES	CuFt	BdFt
71S	84E	27	LARGE ALL	099A	574.00		541	2,770	S	W
CL: 68.1 %		COEFF		BASAL AREA/ACRE			# OF PLOTS REQ.		INF. POP.	
SD: 1.0	VAR.	S.E.%	LOW	AVG	HIGH		5	10	15	
SPRC SG	1013.6	43.5	0	1	1					
HMLK SG	1512.9	65.0	0	1	1					
TOTAL	<i>43.1</i>	<i>1.9</i>	<i>272</i>	<i>277</i>	<i>282</i>		<i>74</i>	<i>19</i>	<i>8</i>	
CL: 68.1 %		COEFF		NET BF/ACRE			# OF PLOTS REQ.		INF. POP.	
SD: 1.0	VAR.%	S.E.%	LOW	AVG	HIGH		5	10	15	
RCDR OG	81.8	3.5	13,256	13,739	14,222					
W HMLK	120.1	5.2	7,047	7,430	7,814					
S SPRUCE	206.1	8.9	4,566	5,010	5,453					
Y CDR	324.2	13.9	563	654	745					
SPRC SG	1072.2	46.1	58	108	158					
HMLK SG	1518.9	65.2	23	66	110					
TOTAL	<i>62.0</i>	<i>2.7</i>	<i>26,288</i>	<i>27,008</i>	<i>27,728</i>		<i>154</i>	<i>38</i>	<i>17</i>	
CL: 68.1 %		COEFF		NET CUFT FT/ACRE			# OF PLOTS REQ.		INF. POP.	
SD: 1.0	VAR.%	S.E.%	LOW	AVG	HIGH		5	10	15	
RCDR OG	74.4	3.2	3,750	3,873	3,997					
W HMLK	105.1	4.5	2,024	2,120	2,216					
S SPRUCE	196.0	8.4	860	939	1,018					
Y CDR	311.6	13.4	189	218	247					
SPRC SG	1011.6	43.5	14	25	35					
HMLK SG	1494.8	64.2	6	17	28					
TOTAL	<i>49.5</i>	<i>2.1</i>	<i>7,039</i>	<i>7,192</i>	<i>7,345</i>		<i>98</i>	<i>24</i>	<i>11</i>	

T71S R84E S26 T099E **T71S R84E S26 T099E**
 Twp Rge Sec Tract Type Acres Plots Sample Trees CuFt BdFt
 71S 84E 26 EAST_ALL 099E 107.00 100 404 S W

Spp	S T	So rt	Gr ad	%	Bd. Ft. per Acre			Total Net MBF	Percent Net Board Foot Volume								Average Log				Logs Per /Acre	
					Net BdFt	Def%	Gross		Net	Log Scale Dia.				Log Length				Ln Ft	Dia In	Bd Ft		CF/ Lf
										4-5	6-11	12-16	17+	12-20	21-30	31-35	36-99					
RC		SC	3S	6	.7	671	666	71	41	59			7	10	83	36	9	141	1.12	4.7		
RC		SC	4S	1		42	42	4	100				43	57		30	6	35	0.49	1.2		
RC		L	3S	7	30.9	963	665	71		100	6	42	30	23	31	29	845	7.07	.8			
RC		M	3S	35	8.5	3,764	3,445	369		7	93		33	22	45	32	20	563	3.86	6.1		
RC		M	2R	8	10.4	836	749	80			100		34	39	27	32	28	1080	7.23	.7		
RC		RC	3S	40	13.7	4,537	3,915	419	20	34	46	6	24	18	52	33	12	194	1.95	20.1		
RC		RC	4S	3	16.2	320	268	29	100			45	41	15		22	7	28	0.59	9.6		
RC	Totals			41	12.4	11,133	9,751	1,043	14	20	66	4	28	21	46	31	12	225	2.05	43.3		
WH		D	3S	28	14.6	2,709	2,313	247	85	11	3	2	10	12	77	36	9	89	0.86	26.0		
WH		D	4S	7	18.3	658	537	57	100			12	42	26	20	27	6	32	0.53	17.0		
WH		HI	1S	1		90	90	10		100					100	36	27	1230	4.96	.1		
WH		J	2S	4	8.6	288	263	28			100		22		78	36	19	492	2.88	.5		
WH		K	2S	34	15.4	3,259	2,756	295		42	58	1	9	8	83	35	15	304	2.04	9.1		
WH		K	3S	4	16.3	423	354	38		65	35	4	8	31	57	32	14	214	1.70	1.7		
WH		RS	2S	5	9.8	448	404	43			100				41	35	21	583	3.15	.7		
WH		PU	3S	1		18	18	2		100					100	32	14	230	1.85	.1		
WH		PU	4S		16.0	46	39	4	100			56	44			20	6	21	0.50	1.8		
WH		PU	U	16	13.5	1,417	1,226	131	45	16	40	13	24	5	57	25	8	78	0.86	15.6		
WH	Totals			33	14.5	9,357	8,001	856	39	23	38	4	14	12	70	31	9	110	1.02	72.6		
SS		SH	1S	1	35.1	93	60	6			100				100	32	36	1200	10.09	.1		
SS		D	3S	5	2.6	271	264	28	65	32	3	12	35	24	29	29	8	81	0.95	3.3		
SS		D	4S			15	15	2	100			100				17	8	34	0.87	.4		
SS		HI	1S	8	3.8	380	365	39			100			76	24	33	32	1475	6.76	.2		
SS		J	1S	6	7.2	288	267	29			100	22			78	32	33	1494	7.56	.2		
SS		J	2S	11	1.5	586	577	62			100		35	12	53	35	26	1042	4.31	.6		
SS		J	S	3		107	107	11			100				100	36	28	1310	4.93	.1		
SS		K	2S	33	5.7	1,704	1,606	172		17	83	3	9	22	67	36	20	632	3.09	2.5		
SS		K	3S	7	9.6	395	357	38		33	67	5	34		62	33	16	335	2.21	1.1		
SS		RS	1S	5	2.7	251	244	26			100				57	35	27	1136	4.49	.2		
SS		RS	2S	17	7.9	897	826	88			100		6	30	64	36	28	1223	5.46	.7		
SS		PU	3S		12.5	6	5	1		100		100				13	13	70	2.00	.1		
SS		PU	U	4	15.9	189	159	17	3	97		3			97	26	22	770	5.33	.2		
SS	Totals			20	6.3	5,182	4,854	519	4	10	86	4	12	25	59	32	17	506	2.84	9.6		
YC		YC	2S	25		95	95	10		100			43		57	32	14	252	2.00	.4		
YC		YC	3S	70	10.9	288	256	27	44	40	17	2	3	12	83	35	10	129	1.32	2.0		
YC		YC	4S	5		15	15	2	100				100			25	6	35	0.54	.4		
YC	Totals			2	7.8	398	367	39	35	54	12	1	17	8	73	33	10	131	1.31	2.8		
S		G	2S	9		57	57	6		100					100	38	12	203	1.39	.3		
S		G	3S	42		246	246	26	58	42					100	37	10	121	0.93	2.0		

T71S R84E S26 T099E										T71S R84E S26 T099E				
Twp	Rge	Sec	Tract	Type	Acres	Plots	Sample Trees	CuFt	BdFt					
71S	84E	26	EAST_ALL	099E	107.00	100	404	S	W					

Spp	S T	So rt	Gr ad	% Net BdFt	Bd. Ft. per Acre			Total Net MBF	Percent Net Board Foot Volume								Average Log				Logs Per /Acre	
					Def%	Gross	Net		Log Scale Dia.				Log Length				Ln Ft	Dia In	Bd Ft	CF/ Lf		
									4-5	6-11	12-16	17+	12-20	21-30	31-35	36-99						
S		CS	3S	4	18	18	2	100									36	6	60	0.49	.3	
S		ST	2S	29	169	169	18			100							39	19	598	2.46	.3	
S		PU	4S		5	5	1	100			100						17	6	20	0.49	.3	
S		O	2S	16	88	88	9				100						39	24	980	3.86	.1	
S Totals				2	585	585	63		28	28	44		1		99		36	10	180	1.15	3.3	
HM		G	3S	70	255	255	27	78	22						100		39	8	100	0.68	2.6	
HM		CS	3S	27	95	95	10	100							100		36	8	80	0.54	1.2	
HM		PU	4S	3	9	9	1	100				100					25	6	30	0.49	.3	
HM Totals				2	359	359	38	84	16			2		98			37	8	89	0.63	4.1	
Type Totals					11.5	27,014	23,917	2,559	22	20	58		4	19	18	59		31	11	176	1.47	135.6

TC TSTATS				STATISTICS				PAGE	1	
				PROJECT	BAYVIEWG			DATE	11/17/2020	
TWP	RGE	SECT	TRACT	TYPE	ACRES	PLOTS	TREES	CuFt	BdFt	
71S	84E	26	EAST ALL	099E	107.00	100	404	S	W	
				TREES	ESTIMATED	PERCENT				
				PER PLOT	TOTAL	SAMPLE				
				PLOTS	TREES	TREES	TREES			
TOTAL		100	404	4.0						
CRUISE		99	404	4.1	10,686		3.8			
DBH COUNT										
REFOREST										
COUNT										
BLANKS		1								
100 %										
STAND SUMMARY										
	SAMPLE	TREES	AVG	BOLE	REL	BASAL	GROSS	NET	GROSS	NET
	TREES	/ACRE	DBH	LEN	DEN	AREA	BF/AC	BF/AC	CF/AC	CF/AC
RCDR OG	188	30.8	24.9	50	20.9	104.2	11,133	9,751	2,751	2,746
W HMLK	158	55.8	16.7	48	20.7	84.4	9,357	8,001	2,302	2,298
S SPRUCE	34	5.0	25.2	68	3.4	17.3	5,182	4,854	866	866
Y CDR	9	2.1	20.6	52	1.1	4.9	398	367	124	123
SPRC SG	8	2.4	17.4	64	1.0	4.0	585	585	133	133
HMLK SG	7	3.8	13.3	55	1.0	3.6	359	359	94	94
TOTAL	404	99.9	20.0	51	48.8	218.4	27,014	23,917	6,271	6,260
CONFIDENCE LIMITS OF THE SAMPLE										
68.1 TIMES OUT OF 100 THE VOLUME WILL BE WITHIN THE SAMPLE ERROR										
CL:	68.1 %	COEFF	SAMPLE TREES - BF				# OF TREES REQ.		INF. POP.	
SD:	1.0	VAR.%	S.E.%	LOW	AVG	HIGH	5	10	15	
RCDR OG		109.2	8.0	591	643	694				
W HMLK		141.4	11.2	283	319	355				
S SPRUCE		81.3	13.9	1,675	1,946	2,218				
Y CDR		69.3	24.4	184	243	303				
SPRC SG		92.0	34.7	274	419	564				
HMLK SG		49.2	20.0	83	104	125				
TOTAL		139.7	7.0	561	603	645	779	195	87	
CL:	68.1 %	COEFF	SAMPLE TREES - CF				# OF TREES REQ.		INF. POP.	
SD:	1.0	VAR.%	S.E.%	LOW	AVG	HIGH	5	10	15	
RCDR OG		87.3	6.4	156	166	177				
W HMLK		110.7	8.8	73	80	87				
S SPRUCE		75.6	13.0	288	331	373				
Y CDR		56.2	19.8	64	80	95				
SPRC SG		70.9	26.7	61	83	105				
HMLK SG		54.2	22.0	21	28	34				
TOTAL		108.7	5.4	133	140	148	472	118	52	
CL:	68.1 %	COEFF	TREES/ACRE				# OF PLOTS REQ.		INF. POP.	
SD:	1.0	VAR.%	S.E.%	LOW	AVG	HIGH	5	10	15	
RCDR OG		124.1	12.4	27	31	35				
W HMLK		92.4	9.2	51	56	61				
S SPRUCE		243.5	24.3	4	5	6				
Y CDR		498.1	49.8	1	2	3				
SPRC SG		450.2	45.0	1	2	3				
HMLK SG		684.6	68.4	1	4	6				
TOTAL		67.4	6.7	93	100	107	182	45	20	
CL:	68.1 %	COEFF	BASAL AREA/ACRE				# OF PLOTS REQ.		INF. POP.	
SD:	1.0	VAR.%	S.E.%	LOW	AVG	HIGH	5	10	15	
RCDR OG		78.6	7.8	96	104	112				
W HMLK		79.1	7.9	78	84	91				
S SPRUCE		163.1	16.3	14	17	20				
Y CDR		424.2	42.4	3	5	7				

TC TSTATS				STATISTICS				PAGE	2	
				PROJECT	BAYVIEWG			DATE	11/17/2020	
TWP	RGE	SECT	TRACT	TYPE	ACRES		PLOTS	TREES	CuFt	BdFt
71S	84E	26	EAST ALL	099E	107.00		100	404	S	W
CL:	68.1 %	COEFF		BASAL AREA/ACRE			# OF PLOTS REQ.		INF. POP.	
SD:	1.0	VAR.	S.E.%	LOW	AVG	HIGH	5	10	15	
SPRC SG		428.0	42.8	2	4	6				
HMLK SG		646.8	64.6	1	4	6				
TOTAL		43.9	4.4	209	218	228	77	19	9	
CL:	68.1 %	COEFF		NET BF/ACRE			# OF PLOTS REQ.		INF. POP.	
SD:	1.0	VAR.%	S.E.%	LOW	AVG	HIGH	5	10	15	
RCDR OG		82.5	8.2	8,947	9,751	10,554				
W HMLK		108.1	10.8	7,136	8,001	8,865				
S SPRUCE		189.4	18.9	3,936	4,854	5,773				
Y CDR		461.1	46.1	198	367	536				
SPRC SG		453.9	45.4	320	585	850				
HMLK SG		649.4	64.9	126	359	592				
TOTAL		58.7	5.9	22,515	23,917	25,319	138	34	15	
CL:	68.1 %	COEFF		NET CUFT FT/ACRE			# OF PLOTS REQ.		INF. POP.	
SD:	1.0	VAR.%	S.E.%	LOW	AVG	HIGH	5	10	15	
RCDR OG		80.3	8.0	2,525	2,746	2,966				
W HMLK		95.0	9.5	2,080	2,298	2,517				
S SPRUCE		178.9	17.9	711	866	1,021				
Y CDR		430.8	43.0	70	123	176				
SPRC SG		427.2	42.7	76	133	190				
HMLK SG		638.9	63.8	34	94	154				
TOTAL		48.7	4.9	5,955	6,260	6,565	95	24	11	

T71S R84E S26 T099W										T71S R84E S26 T099W				
Twp	Rge	Sec	Tract	Type	Acres	Plots	Sample Trees	CuFt	BdFt					
71S	84E	26	WEST_ALL	099W	330.00	310	1,625	S	W					

Spp	S T	So rt	Gr ad	% Net BdFt	Bd. Ft. per Acre			Total Net MBF	Percent Net Board Foot Volume								Average Log				Logs Per /Acre	
					Def%	Gross	Net		Log Scale Dia.				Log Length				Ln Ft	Dia In	Bd Ft	CF/ Lf		
									4-5	6-11	12-16	17+	12-20	21-30	31-35	36-99						
RC		SC	3S	7	1.2	1,049	1,036	342		33	47	20		4	31	65		35	11	181	1.55	5.7
RC		SC	4S	1	2.9	58	57	19		100				10	34	56		27	7	39	0.62	1.5
RC		L	3S	5	26.7	1,090	799	264				100		22	52	10	16	26	29	713	6.86	1.1
RC		L	2R	1	24.5	152	115	38				100		21	25	29	25	29	35	1178	9.33	.1
RC		M	3S	32	6.9	4,579	4,261	1,406			13	87		1	33	31	35	32	20	552	3.76	7.7
RC		M	1R			27	27	9				100					100	40	32	1840	8.07	.0
RC		M	2R	6	6.6	949	887	293				100			28	31	42	33	28	1092	6.82	.8
RC		RC	3S	45	15.1	7,156	6,076	2,005		20	30	51		4	20	21	55	33	13	214	2.13	28.4
RC		RC	4S	3	7.1	381	354	117		100	0			30	56	14		23	7	31	0.63	11.2
RC	Totals			47	11.8	15,440	13,611	4,492		14	21	65		4	26	25	44	31	13	241	2.21	56.6
WH		SH	2S		39.3	21	13	4				100			100			24	24	370	4.04	.0
WH		D	3S	20	7.6	1,973	1,824	602		92	8			1	9	15	76	37	8	85	0.75	21.5
WH		D	4S	6	5.1	530	503	166		100				18	57	18	8	24	7	35	0.52	14.4
WH		HI	1S	1	2.6	50	49	16				100				47	53	34	24	891	3.91	.1
WH		J	2S	3	3.8	338	325	107				100			36	28	35	30	18	406	2.37	.8
WH		J	S	1	6.1	23	21	7				100				100		33	19	460	2.43	.0
WH		K	2S	36	8.7	3,515	3,208	1,059			66	34		1	11	13	75	35	14	260	1.75	12.3
WH		K	3S	7	9.4	666	604	199			85	15		5	17	13	66	32	14	211	1.58	2.9
WH		RS	1S			26	26	9				100				100		33	28	1200	5.48	.0
WH		RS	2S	4	11.8	320	282	93				100		12	33	15	40	28	20	439	3.14	.6
WH		PU	3S	2	10.6	270	241	80		60	29	11			4	4	92	38	9	120	1.03	2.0
WH		PU	4S	1		58	58	19		100				33	59	8		23	6	32	0.50	1.8
WH		PU	U	19	17.8	1,968	1,618	534		52	19	29		10	16	7	66	30	8	77	0.86	21.0
WH	Totals			30	10.1	9,758	8,771	2,894		37	36	27		4	16	13	66	32	9	113	1.00	77.5
SS		SH	1S			22	22	7				100			100			26	36	1500	7.47	.0
SS		SH	2S	1	35.8	103	66	22				100				33	67	37	35	1376	9.12	.0
SS		SH	3S		22.5	28	22	7				100				100		32	31	1100	5.41	.0
SS		SH	SL	1	25.0	39	29	10				100				100		40	46	2970	13.15	.0
SS		D	3S	5	6.5	350	327	108		54	46			7	13	9	71	34	10	121	1.15	2.7
SS		D	4S	1	1.4	53	52	17		100				40	54	6		21	7	32	0.64	1.6
SS		HI	1S	10	4.7	605	577	190				100			23	25	53	33	32	1501	6.97	.4
SS		HI	2S	1	12.4	73	64	21				100				100		40	28	1292	5.70	.0
SS		HI	SL	1	5.5	93	88	29				100			25	35	40	31	43	2648	11.54	.0
SS		J	1S	2	3.7	95	92	30				100			23		77	36	33	1635	6.78	.1
SS		J	2S	15	1.7	919	903	298				100			16	24	60	35	22	757	3.28	1.2
SS		J	S	2	7.1	126	118	39				100			19	21	60	35	26	976	4.14	.1
SS		K	2S	34	7.9	2,220	2,046	675			25	75		3	10	11	75	35	18	469	2.51	4.4
SS		K	3S	2	5.9	154	145	48			46	54		2	17	23	58	34	16	336	2.23	.4
SS		RS	1S	4	9.2	214	195	64				100			12	41	47	35	34	1651	7.54	.1
SS		RS	2S	14	9.8	945	852	281				100			32	42	26	31	28	1009	5.32	.8
SS		PU	3S	1	14.7	81	69	23		26	27	48		12	6	82		30	11	183	1.49	.4

T71S R84E S26 T099W										T71S R84E S26 T099W				
Twp	Rge	Sec	Tract	Type	Acres	Plots	Sample Trees	CuFt	BdFt					
71S	84E	26	WEST_ALL	099W	330.00	310	1,625	S	W					

S Spp	So T	Gr rt ad	% Net BdFt	Bd. Ft. per Acre			Total Net MBF	Percent Net Board Foot Volume								Average Log				Logs Per /Acre	
								Log Scale Dia.				Log Length				Ln	Dia	Bd	CF/		
								4-5	6-11	12-16	17+	12-20	21-30	31-35	36-99	Ft	In	Ft	Lf		
SS		PU 4S		2	2	1	100					100					24	7	40	0.83	.1
SS		PU U	6	14.2	373	320	106	14	9	77		13	15	3	69		28	11	197	1.63	1.6
SS	Totals		21	7.8	6,498	5,989	1,976	5	13	82		3	17	20	60		32	16	425	2.48	14.1
YC		YC 2S	33	11.2	200	178	59		49	51		32	20	49			34	15	292	2.37	.6
YC		YC 3S	57	9.1	337	307	101	78	22			13	12	76			38	8	88	0.89	3.5
YC		YC 4S	10	9.7	57	52	17	100				39	45	7	8		24	6	28	0.53	1.8
YC	Totals		2	9.8	595	536	177	54	29	17		4	22	14	60		33	8	91	0.96	5.9
Type Totals				10.5	32,291	28,907	9,539	20	24	56		4	21	20	54		32	11	188	1.57	154.1

TC TSTATS				STATISTICS				PAGE	1	
				PROJECT	BAYVIEWG			DATE	11/17/2020	
TWP	RGE	SECT	TRACT	TYPE	ACRES	PLOTS	TREES	CuFt	BdFt	
71S	84E	26	WEST ALL	099W	330.00	310	1,625	S	W	
				TREES	ESTIMATED	PERCENT				
				PER PLOT	TOTAL	SAMPLE				
				PLOTS	TREES	TREES	TREES			
TOTAL		310	1625	5.2						
CRUISE		308	1625	5.3	35,854		4.5			
DBH COUNT										
REFOREST										
COUNT										
BLANKS		2								
100 %										
STAND SUMMARY										
	SAMPLE	TREES	AVG	BOLE	REL	BASAL	GROSS	NET	GROSS	NET
	TREES	/ACRE	DBH	LEN	DEN	AREA	BF/AC	BF/AC	CF/AC	CF/AC
RCDR OG	889	39.4	27.0	56	30.2	156.8	15,440	13,611	3,861	3,861
W HMLK	535	55.5	17.2	53	21.6	89.7	9,758	8,771	2,457	2,452
S SPRUCE	136	7.3	23.7	69	4.6	22.2	6,498	5,989	1,112	1,111
Y CDR	65	6.5	17.8	49	2.7	11.2	595	536	187	187
TOTAL	1,625	108.6	21.7	55	60.0	279.9	32,291	28,907	7,618	7,611
CONFIDENCE LIMITS OF THE SAMPLE										
68.1 TIMES OUT OF 100 THE VOLUME WILL BE WITHIN THE SAMPLE ERROR										
CL:	68.1 %	COEFF	SAMPLE TREES - BF				# OF TREES REQ.		INF. POP.	
SD:	1.0	VAR.%	S.E.%	LOW	AVG	HIGH	5	10	15	
RCDR OG	114.9	3.9		580	603	626				
W HMLK	110.2	4.8		253	266	278				
S SPRUCE	96.3	8.3		1,602	1,746	1,891				
Y CDR	171.8	21.3		116	147	178				
TOTAL	145.1	3.6		549	569	590	841	210	93	
CL:	68.1 %	COEFF	SAMPLE TREES - CF				# OF TREES REQ.		INF. POP.	
SD:	1.0	VAR.%	S.E.%	LOW	AVG	HIGH	5	10	15	
RCDR OG	91.7	3.1		152	157	161				
W HMLK	90.6	3.9		66	69	72				
S SPRUCE	85.1	7.3		284	306	328				
Y CDR	143.2	17.8		37	45	53				
TOTAL	111.3	2.8		132	136	139	495	124	55	
CL:	68.1 %	COEFF	TREES/ACRE				# OF PLOTS REQ.		INF. POP.	
SD:	1.0	VAR.%	S.E.%	LOW	AVG	HIGH	5	10	15	
RCDR OG	96.5	5.5		37	39	42				
W HMLK	89.3	5.1		53	56	58				
S SPRUCE	240.5	13.6		6	7	8				
Y CDR	347.9	19.7		5	6	8				
TOTAL	57.6	3.3		105	109	112	133	33	15	
CL:	68.1 %	COEFF	BASAL AREA/ACRE				# OF PLOTS REQ.		INF. POP.	
SD:	1.0	VAR.%	S.E.%	LOW	AVG	HIGH	5	10	15	
RCDR OG	69.6	3.9		151	157	163				
W HMLK	80.4	4.6		86	90	94				
S SPRUCE	171.2	9.7		20	22	24				
Y CDR	298.0	16.9		9	11	13				
TOTAL	41.1	2.3		273	280	286	67	17	7	
CL:	68.1 %	COEFF	NET BF/ACRE				# OF PLOTS REQ.		INF. POP.	
SD:	1.0	VAR.%	S.E.%	LOW	AVG	HIGH	5	10	15	
RCDR OG	85.3	4.8		12,952	13,611	14,270				
W HMLK	112.6	6.4		8,210	8,771	9,332				
S SPRUCE	196.5	11.2		5,321	5,989	6,657				
Y CDR	382.5	21.7		420	536	653				
TOTAL	64.9	3.7		27,843	28,907	29,972	168	42	19	

TC TSTATS				STATISTICS				PAGE	2	
				PROJECT	BAYVIEWWG			DATE	11/17/2020	
TWP	RGE	SECT	TRACT	TYPE	ACRES	PLOTS	TREES	CuFt	BdFt	
71S	84E	26	WEST ALL	099W	330.00	310	1,625	S	W	
CL:	68.1 %	COEFF		NET CUFT FT/ACRE			# OF PLOTS REQ.		INF. POP.	
SD:	1.0	VAR.	S.E.%	LOW	AVG	HIGH	5	10	15	
CL:	68.1 %	COEFF		NET CUFT FT/ACRE			# OF PLOTS REQ.		INF. POP.	
SD:	1.0	VAR.%	S.E.%	LOW	AVG	HIGH	5	10	15	
RCDR OG		76.8	4.4	3,692	3,861	4,029				
W HMLK		97.7	5.5	2,316	2,452	2,588				
S SPRUCE		187.6	10.6	993	1,111	1,230				
Y CDR		368.3	20.9	148	187	226				
TOTAL		50.8	2.9	7,391	7,611	7,830	103	26	11	

T TSPCSTGR		Species, Sort Grade - Board Foot Volumes (Type)										Page 1										
		Project: BAYVIEWG										Date 11/17/2020										
												Time 9:33:01AM										
T71S R84E S23 T099N										T71S R84E S23 T099N												
Twp	Rge	Sec	Tract	Type	Acres	Plots	Sample Trees	CuFt	BdFt													
71S	84E	23	SESF	099N	137.00	131	741	S	W													
Spp	S	So	Gr	%	Bd. Ft. per Acre			Total	Percent Net Board Foot Volume								Average Log				Logs Per /Acre	
					Net	Def%	Gross		Net	Log Scale Dia.				Log Length				Ln	Dia	Bd		CF/Lf
									4-5	6-11	12-16	17+	12-20	21-30	31-35	36-99	Ft	In	Ft	Lf		
RC	SC	3S		4	2.2	750	734	101		84	16			13	22	64	34	9	98	1.03		7.5
RC	SC	4S				83	83	11		100				100			26	6	32	0.42		2.6
RC	L	3S		14	21.7	2,992	2,343	321				100	17	64	12	7	24	27	655	6.34		3.6
RC	M	3S		44	5.5	7,910	7,477	1,024			26	74	1	37	21	40	31	18	394	3.00		19.0
RC	M	1R		1	2.3	243	238	33				100		60	40		27	36	1566	10.41		.2
RC	M	2R		5	2.1	791	774	106				100		80		20	27	27	864	5.93		.9
RC	RC	3S		28	11.3	5,536	4,909	673		26	32	42	7	23	18	52	32	12	167	1.83		29.4
RC	RC	4S		4	6.9	569	530	73		100			27	56	14	3	23	7	32	0.68		16.5
RC	Totals			69	9.5	18,874	17,088	2,341		15	21	64	6	39	18	37	30	12	215	2.03		79.6
WH	D	3S		24	8.2	1,005	922	126		83	14	3	6	19	27	48	34	8	75	0.75		12.3
WH	D	4S		7	5.9	308	290	40		100			13	72	9	6	26	6	35	0.51		8.4
WH	K	2S		27	13.5	1,186	1,026	141		0	85	15	3	30	38	30	30	13	172	1.50		6.0
WH	K	3S		3	25.3	127	95	13				100	15		47	38	29	19	365	3.05		.3
WH	RS	2S		8	17.0	382	317	43				100		12	55	34	33	21	525	3.76		.6
WH	PU	3S		5	11.6	215	190	26		65	35				5	95	38	9	128	1.04		1.5
WH	PU	4S		2		83	83	11		100			11	89			24	6	31	0.46		2.7
WH	PU	U		24	21.6	1,147	899	123		65	24	12	2	27	1	71	30	8	65	0.77		13.8
WH	Totals			15	14.2	4,453	3,822	524		48	33	18	4	27	23	45	30	8	84	0.87		45.5
YC	YC	2S		25	6.5	311	291	40			25	75			44	56	36	17	436	3.05		.7
YC	YC	3S		60	9.4	763	691	95		21	66	13	1	10	33	56	33	11	160	1.51		4.3
YC	YC	4S		15	13.6	197	170	23		85		15	8	63	9	20	26	7	40	0.66		4.3
YC	Totals			5	9.4	1,271	1,152	158		25	46	29	2	15	32	51	30	10	125	1.30		9.2
SS	SH	2S		5	37.5	248	155	21				100			28	72	38	31	1104	7.28		.1
SS	D	3S		5	11.2	160	142	19		74	9	17		37	11	52	33	10	113	1.15		1.3
SS	D	4S		1	12.4	17	15	2		100			100				16	9	35	0.94		.4
SS	HI	1S		7	8.8	219	200	27				100		25		75	34	34	1639	8.71		.1
SS	HI	2S		1	4.5	49	46	6				100		100			24	32	1050	5.75		.0
SS	HI	S		2	22.2	68	53	7				100			100		33	21	490	2.91		.1
SS	J	2S		8	3.0	215	209	29				100			61	39	34	21	682	3.51		.3
SS	K	2S		35	8.5	1,093	1,000	137			21	79	0	27	9	63	33	18	430	2.72		2.3
SS	K	3S		4	11.0	115	102	14			50	50	13	26	49	12	29	14	208	2.12		.5
SS	RS	2S		30	13.7	975	841	115				100		31	28	41	31	29	1056	6.02		.8
SS	PU	3S		2		48	48	7		100				71		29	27	10	102	0.98		.5
SS	Totals			11	12.3	3,207	2,811	385		6	10	84	1	26	22	50	31	17	432	2.89		6.5
Type Totals					10.5	27,805	24,874	3,408		19	23	58	5	35	20	41	30	11	177	1.64		140.8

TC TSTATS				STATISTICS				PAGE	1	
				PROJECT	BAYVIEWG			DATE	11/17/2020	
TWP	RGE	SECT	TRACT	TYPE	ACRES	PLOTS	TREES	CuFt	BdFt	
71S	84E	23	SESF	099N	137.00	131	741	S	W	
				TREES	ESTIMATED	PERCENT				
				PER PLOT	TOTAL	SAMPLE				
				PLOTS	TREES	TREES	TREES			
TOTAL		131	741	5.7						
CRUISE		131	741	5.7	16,070		4.6			
DBH COUNT										
REFOREST										
COUNT										
BLANKS										
100 %										
STAND SUMMARY										
	SAMPLE	TREES	AVG	BOLE	REL	BASAL	GROSS	NET	GROSS	NET
	TREES	/ACRE	DBH	LEN	DEN	AREA	BF/AC	BF/AC	CF/AC	CF/AC
RCDR OG	481	56.6	26.0	54	40.9	208.5	18,874	17,088	4,765	4,765
W HMLK	164	45.2	16.5	46	16.5	67.1	4,453	3,822	1,198	1,198
Y CDR	52	11.2	19.2	53	5.1	22.5	1,271	1,152	365	364
S SPRUCE	44	4.2	27.7	65	3.4	17.8	3,207	2,811	586	586
TOTAL	<i>741</i>	<i>117.3</i>	<i>22.2</i>	<i>51</i>	<i>67.0</i>	<i>315.9</i>	<i>27,805</i>	<i>24,874</i>	<i>6,913</i>	<i>6,913</i>
CONFIDENCE LIMITS OF THE SAMPLE										
68.1 TIMES OUT OF 100 THE VOLUME WILL BE WITHIN THE SAMPLE ERROR										
CL: 68.1 %	COEFF	SAMPLE TREES - BF					# OF TREES REQ.	INF. POP.		
SD: 1.0	VAR.%	S.E.%	LOW	AVG	HIGH	5	10	15		
RCDR OG	112.3	5.1	512	540	567					
W HMLK	141.1	11.0	117	131	146					
Y CDR	144.6	20.0	161	202	242					
S SPRUCE	128.4	19.3	896	1,111	1,325					
TOTAL	<i>142.3</i>	<i>5.2</i>	<i>436</i>	<i>460</i>	<i>484</i>	<i>809</i>	<i>202</i>	<i>90</i>		
CL: 68.1 %	COEFF	SAMPLE TREES - CF					# OF TREES REQ.	INF. POP.		
SD: 1.0	VAR.%	S.E.%	LOW	AVG	HIGH	5	10	15		
RCDR OG	103.1	4.7	133	139	146					
W HMLK	132.8	10.4	37	41	45					
Y CDR	130.1	18.0	48	58	69					
S SPRUCE	116.9	17.6	183	222	261					
TOTAL	<i>123.7</i>	<i>4.5</i>	<i>111</i>	<i>117</i>	<i>122</i>	<i>611</i>	<i>153</i>	<i>68</i>		
CL: 68.1 %	COEFF	TREES/ACRE					# OF PLOTS REQ.	INF. POP.		
SD: 1.0	VAR.%	S.E.%	LOW	AVG	HIGH	5	10	15		
RCDR OG	89.9	7.9	52	57	61					
W HMLK	108.1	9.4	41	45	49					
Y CDR	228.8	20.0	9	11	13					
S SPRUCE	236.1	20.6	3	4	5					
TOTAL	<i>65.7</i>	<i>5.7</i>	<i>111</i>	<i>117</i>	<i>124</i>	<i>172</i>	<i>43</i>	<i>19</i>		
CL: 68.1 %	COEFF	BASAL AREA/ACRE					# OF PLOTS REQ.	INF. POP.		
SD: 1.0	VAR.%	S.E.%	LOW	AVG	HIGH	5	10	15		
RCDR OG	58.5	5.1	198	209	219					
W HMLK	97.3	8.5	61	67	73					
Y CDR	181.8	15.9	19	23	26					
S SPRUCE	184.8	16.1	15	18	21					
TOTAL	<i>40.9</i>	<i>3.6</i>	<i>305</i>	<i>316</i>	<i>327</i>	<i>67</i>	<i>17</i>	<i>7</i>		
CL: 68.1 %	COEFF	NET BF/ACRE					# OF PLOTS REQ.	INF. POP.		
SD: 1.0	VAR.%	S.E.%	LOW	AVG	HIGH	5	10	15		
RCDR OG	67.1	5.9	16,086	17,088	18,089					
W HMLK	128.4	11.2	3,394	3,822	4,251					
Y CDR	215.3	18.8	935	1,152	1,368					
S SPRUCE	230.3	20.1	2,246	2,811	3,377					
TOTAL	<i>50.7</i>	<i>4.4</i>	<i>23,774</i>	<i>24,874</i>	<i>25,973</i>	<i>102</i>	<i>26</i>	<i>11</i>		

TC TSTATS				STATISTICS			PAGE	2		
				PROJECT	BAYVIEWWG		DATE	11/17/2020		
TWP	RGE	SECT	TRACT	TYPE	ACRES	PLOTS	TREES	CuFt	BdFt	
71S	84E	23	SESF	099N	137.00	131	741	S	W	
CL:	68.1 %	COEFF		NET CUFT FT/ACRE			# OF PLOTS REQ.		INF. POP.	
SD:	1.0	VAR.	S.E.%	LOW	AVG	HIGH	5	10	15	
CL:	68.1 %	COEFF		NET CUFT FT/ACRE			# OF PLOTS REQ.		INF. POP.	
SD:	1.0	VAR.%	S.E.%	LOW	AVG	HIGH	5	10	15	
RCDR OG		59.7	5.2	4,516	4,765	5,013				
W HMLK		124.1	10.8	1,068	1,198	1,328				
Y CDR		202.9	17.7	300	364	429				
S SPRUCE		222.4	19.4	472	586	700				
TOTAL		43.2	3.8	6,652	6,913	7,173	74	19	8	

ADNR-DOF Sort and Grade Guidelines

Southeast Alaska

(4 pages)

ADNR-DOF Old Growth Sort Guidelines for Southeast Alaska

Sort Code/ Symbol	Description	Min. Length	Min. Diameter	Max Diameter
<u>SPRUCE AND HEMLOCK LOGS</u>				
HI/E	High Grade Sort Clean appearing #2 and better. Reasonably straight, with clear cuttings. #2 saw 18"-23" should be of prime quality. Maximum twist 2" per foot, Max. defect 15%.	12'	18"	
RS/R	Red Sort Good appearing #3 saw or better. Knot spacing very important with 4' of clear cuttings between knots on 50% of log. Max deductions 35%.	12'	18"	
SH/B	Shop Sort Should have clear cutting in one Quadrant minimum. Total deductions not more than 50%.	12'	24"	
JS/J	Japan Sort Round clean #2 and better quality, reasonably straight with no hooked butt or sap. Max defect 25%.	12'	17"	
KS/K	Korea Sort #3 or better, no rough tops. Maximum deduction 35%. Relatively good sawlog.	12'	12"	
DO/D	Domestic Sort Veneer or sawlog quality. Maximum defect 35%. #4 sawlog and better.	12'	6"	
PU/U	Pulp Sort Min. 50% net utility scale. Won't fit into domestic sort due to quality or size.	12'	6"	

RED CEDAR LOGS

L/L	Shake & Shingle Suitable to produce 4' blocks for shakes or 16" blocks for shingles. Larger logs that aren't saw quality.	12'	20"
M/M	Medium Sawlog Good appearing #3 saw or better, Green round sawable logs and high quality slabs. Max defect 50%	12'	12"
SC/C	Small Sawlogs Small sawlog type. Preferred lengths 24', 31' and 37'. No excessive sweep or twist. Max. defect 25%. Sound, tight knots.	12'	6"
RC/X	Camp Run Domestic Sawlog High defect or not fitting M & C sort specs.	12'	6"
<u>YELLOW CEDAR LOGS</u>			
YC/Y	All Saw Logs Camp run sort. Grade determines quality. No excessive sweep or twist. Must be suitable for sawlogs. Blue stain is permissible. 1/3 sound Scribner volume.	12'	6"

ADNR-DOF Second Growth Sort Guidelines for Southeast Alaska

Sort Code/ Symbol	Description	Min. Length	Min. Diameter	Max Diameter
<u>SPRUCE AND HEMLOCK LOGS</u>				
O/V	Oversize #2 and better sawlog.	24'	20"	
ST/S	Standard #2 and better sawlog.	24'	13"	20"
G/G	Gang Generally a #3 sawlog. 24' log must be ≥ 8" Dia.	24'	8"	13"
CS/N	Chip and Saw #3 sawlog. 36' only allowed length. No Bark seems.	36'	6"	8"
* V/S/G	No sap rot. No included bark seems. Buck off excessive defect, swell, hook, and sweep. Maximum defect 33%. Preferred lengths: 24', 32', 36', 38'.			
RA/A	<u>Alder Logs</u> All Saw Logs Camp run sort. #3 sawlog or better. No excessive sweep or crook. 1/3 sound Scribner volume.	24'	8"	

Log Grades

Grade	Abrv	Desc	Fbr	Min Diameter	Min Length	Min Vol	Vol Type
0	CU	CULL	G	6	1	0	
1	1S	#1 SAW	G	24	16	0	
2	2S	#2 SAW	G	12	12	60	Net
3	3S	#3 SAW	G	6	12	50	Net
4	4S	#4 SAW	G	6	12	10	Net
5	S	SP MILL	G	16	17	0	
7	1R	1 SAW RC	G	28	16	500	Net
8	2R	2 SAW RC	G	20	12	210	Net
P	PE	PEELER	G	24	17	0	
S	SL	SELECT	G	30	16	90	%clear
U	U	UTILITY	G	6	12	0	