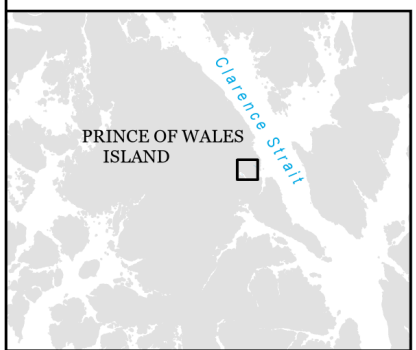


Township 71S, Range 84E  
Copper River Meridian



Vicinity Map: 1 inch = 36 miles

**Legend**

- Map Pages
- Proposed Small Sale Areas
- Proposed Timber Sale(s)

**Owner**

- State
- Municipal/ Private
- Southeast State Forest
- Major Roads

**APPENDIX A1  
SSE-1369 K  
Bay View Timber Sale  
Area Map**



**DIVISION OF FORESTRY**



0 200 400 800 Feet  
1 inch = 400 feet

T71S, R84E; Section 14, 15.  
Copper River Meridian

Contour Interval = 40 feet  
Source: 2018 USFS LiDAR

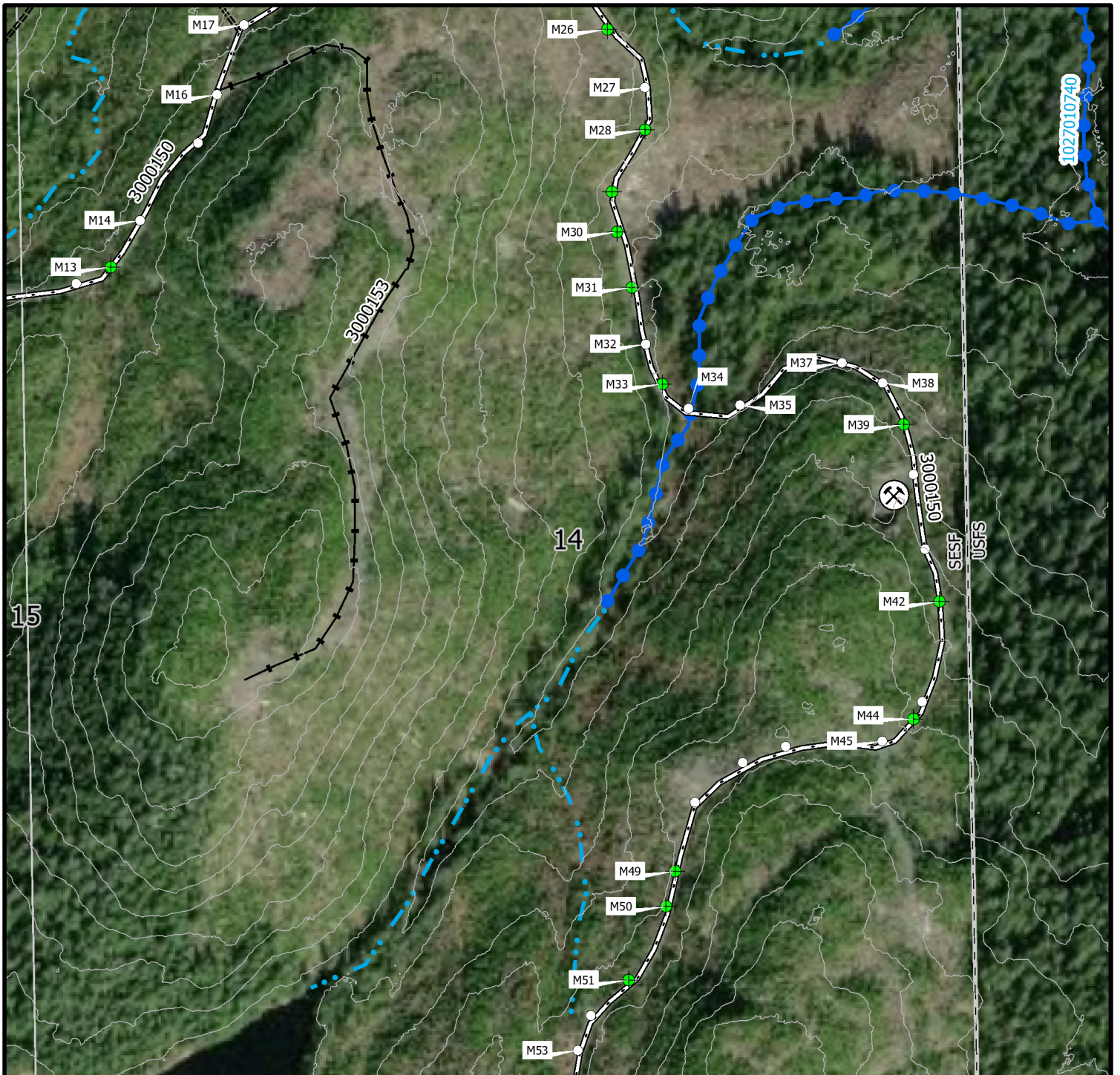
**Legend**

Proposed Timber Sale(s)	Existing Forest Roads	Changes
Proposed Small Sale Areas	Active Primary	Proposed Road to be removed
Cable Logging Setting	Secondary (upgrade)	Proposed Road to Add
<b>Proposed Harvest Roads</b>	Inactive Spur	<b>Streams</b>
Primary	Closed	Anadromous
Secondary	<b>Existing SESF Road Features</b>	Tributary to Anadromous ≤ 12%
Spur	Culvert	Tributary to Anadromous >12%
Proposed Drainage Structures	Road Points	Surface Waters
	Rock Pit	Thorne Bay Codified Watershed
		Eagle Nest

**APPENDIX A2**  
**SSE-1369K**  
**Bay View Timber Sale Map**  
**Map Page: A**  
**"Existing 1"**



**DIVISION OF FORESTRY**



0 200 400 800 Feet  
1 inch = 400 feet

T71S, R84E; Section 14, 15.  
Copper River Meridian

Contour Interval = 40 feet  
Source: 2018 USFS LiDAR

**Legend**

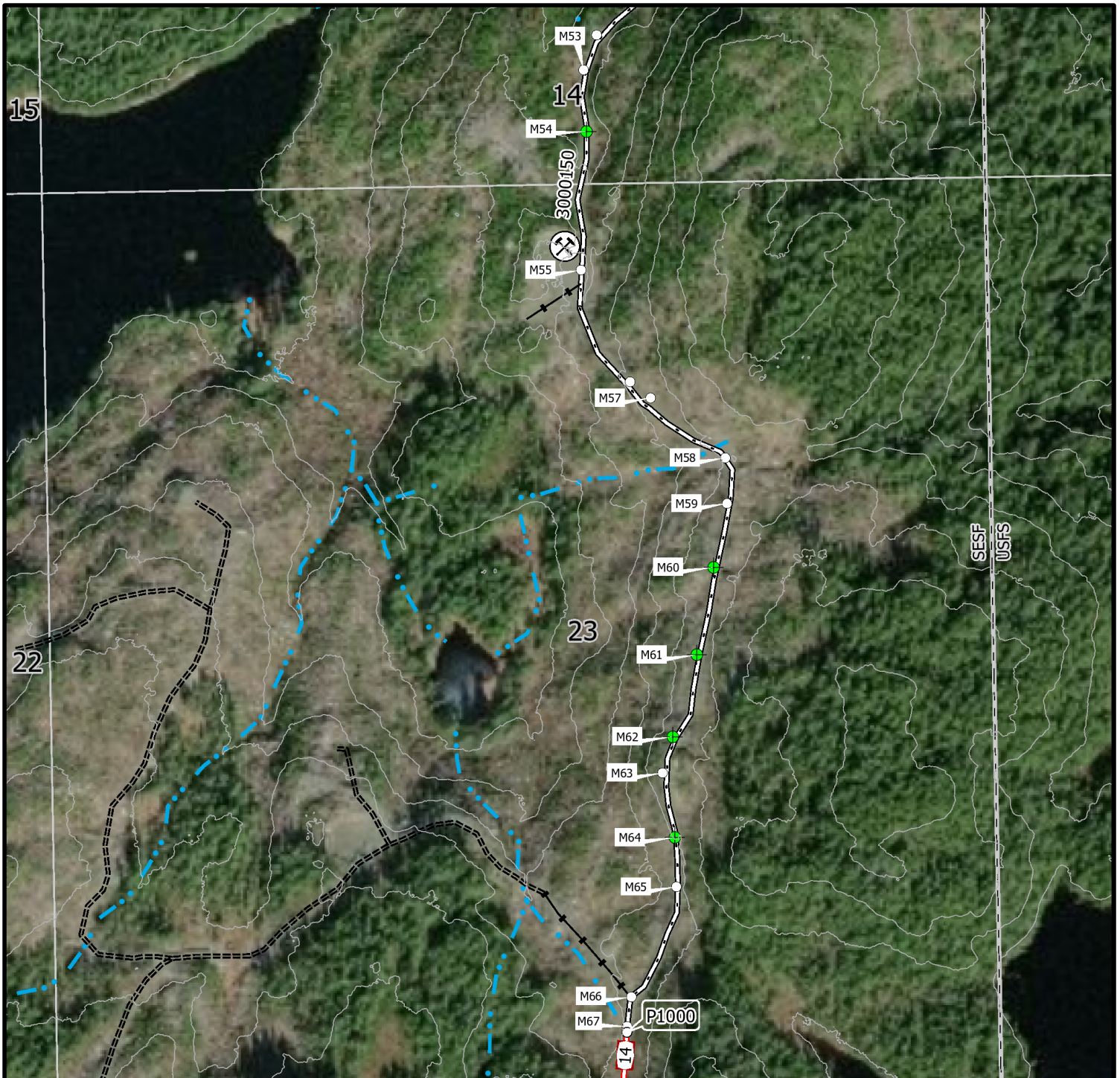
- |                               |                                    |                               |
|-------------------------------|------------------------------------|-------------------------------|
| Proposed Timber Sale(s)       | Existing Forest Roads              | Changes                       |
| Proposed Small Sale Areas     | Active Primary                     | Proposed Road to be removed   |
| Cable Logging Setting         | Secondary (upgrade)                | Proposed Road to Add          |
| <b>Proposed Harvest Roads</b> | Inactive Spur                      | <b>Streams</b>                |
| Primary                       | Closed                             | Anadromous                    |
| Secondary                     | <b>Existing SESF Road Features</b> | Tributary to Anadromous ≤ 12% |
| Spur                          | Culvert                            | Tributary to Anadromous >12%  |
| Proposed Drainage Structures  | Road Points                        | Surface Waters                |
|                               | Rock Pit                           | Thorne Bay Codified Watershed |
|                               |                                    | Eagle Nest                    |

**APPENDIX A2**  
**SSE-1369K**  
**Bay View Timber Sale Map**  
**Map Page: B**  
**"Existing 2"**



**DIVISION OF FORESTRY**





0 200 400 800 Feet  
1 inch = 400 feet

T71S, R84E; Section 14, 15, 22, 23.  
Copper River Meridian

Contour Interval = 40 feet  
Source: 2018 USFS LiDAR

**Legend**

- |                               |                                    |                               |
|-------------------------------|------------------------------------|-------------------------------|
| Proposed Timber Sale(s)       | Existing Forest Roads              | Changes                       |
| Proposed Small Sale Areas     | Active Primary                     | Proposed Road to be removed   |
| Cable Logging Setting         | Secondary (upgrade)                | Proposed Road to Add          |
| <b>Proposed Harvest Roads</b> | Inactive Spur                      | <b>Streams</b>                |
| Primary                       | Closed                             | Anadromous                    |
| Secondary                     | <b>Existing SESF Road Features</b> | Tributary to Anadromous ≤ 12% |
| Spur                          | Culvert                            | Tributary to Anadromous >12%  |
| Proposed Drainage Structures  | Road Points                        | Surface Waters                |
|                               | Rock Pit                           | Thorne Bay Codified Watershed |
|                               |                                    | Eagle Nest                    |

**APPENDIX A2**  
**SSE-1369K**  
**Bay View Timber Sale Map**  
**Map Page: C**  
**"Existing 3"**



**DIVISION OF FORESTRY**





0 200 400 800 Feet  
1 inch = 400 feet

T71S, R84E; Section 22, 23.  
Copper River Meridian

Contour Interval = 40 feet  
Source: 2018 USFS LiDAR

**Legend**

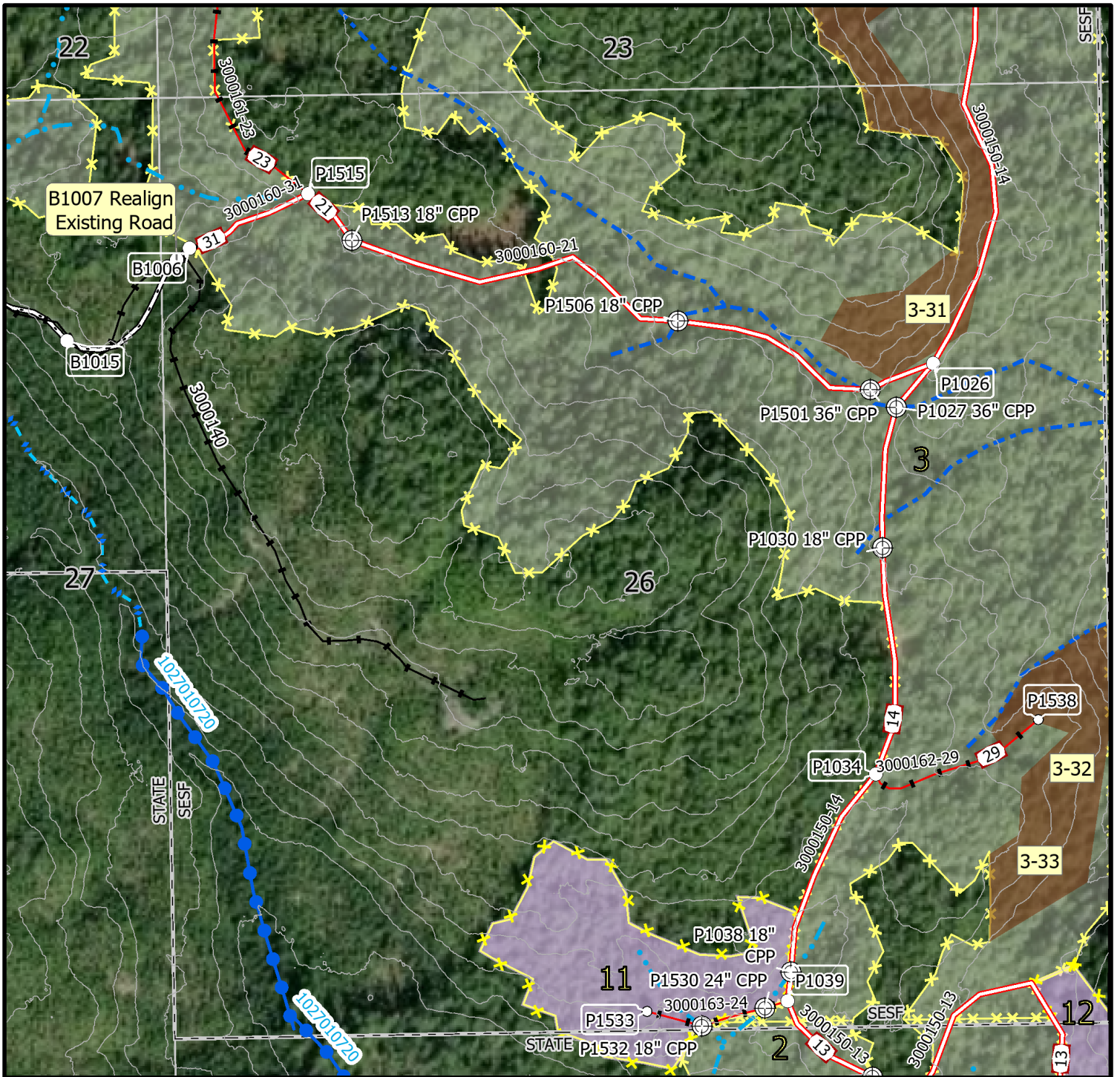
- |   |   |  |
|---|---|--|
| <ul style="list-style-type: none"> <li> Proposed Timber Sale(s)</li> <li> Proposed Small Sale Areas</li> <li> Cable Logging Setting</li> <li><b>Proposed Harvest Roads</b></li> <li> Primary</li> <li> Secondary</li> <li> Spur</li> <li> Proposed Drainage Structures</li> </ul> | <ul style="list-style-type: none"> <li><b>Existing Forest Roads</b></li> <li> Active Primary</li> <li> Secondary (upgrade)</li> <li> Inactive Spur</li> <li> Closed</li> <li><b>Existing SESF Road Features</b></li> <li> Culvert</li> <li> Road Points</li> <li> Rock Pit</li> </ul> | <ul style="list-style-type: none"> <li><b>Changes</b></li> <li> Proposed Road to be removed</li> <li> Proposed Road to Add</li> <li><b>Streams</b></li> <li> Anadromous</li> <li> Tributary to Anadromous ≤ 12%</li> <li> Tributary to Anadromous &gt;12%</li> <li> Surface Waters</li> <li> Thorne Bay Codified Watershed</li> <li> Eagle Nest</li> </ul> |
|---|---|--|

**APPENDIX A2**  
**SSE-1369K**  
**Bay View Timber Sale Map**  
**Map Page: D**  
**"Unit 3 North"**



**DIVISION OF FORESTRY**





0 200 400 800 Feet  
1 inch = 400 feet

T71S, R84E; Section 22, 23, 26, 27.  
Copper River Meridian

Contour Interval = 40 feet  
Source: 2018 USFS LiDAR

**Legend**

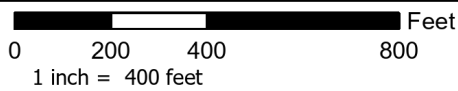
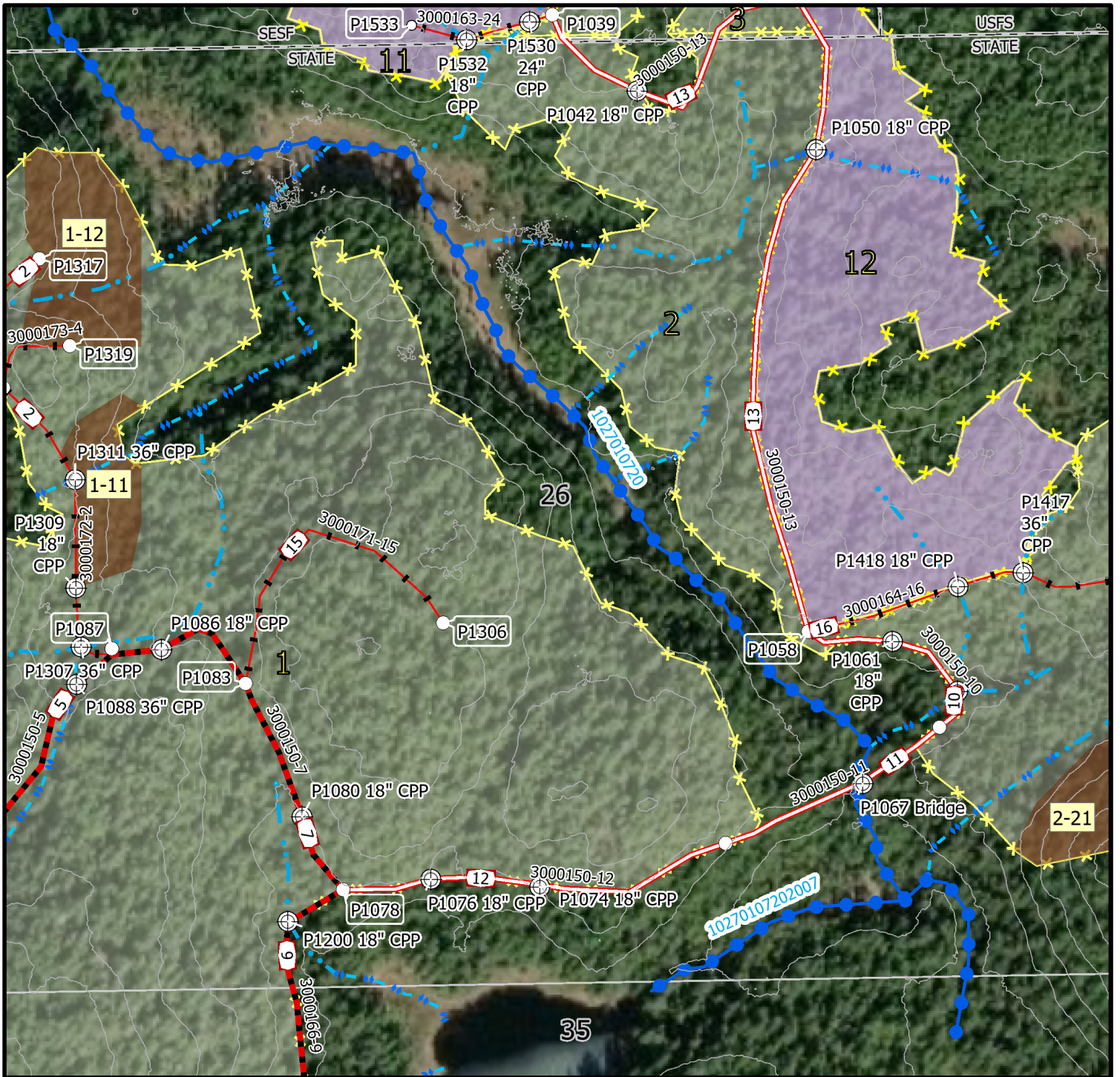
- |   |   |  |
|---|---|--|
| <ul style="list-style-type: none"> <li> Proposed Timber Sale(s)</li> <li> Proposed Small Sale Areas</li> <li> Cable Logging Setting</li> <li><b>Proposed Harvest Roads</b></li> <li> Primary</li> <li> Secondary</li> <li> Spur</li> <li> Proposed Drainage Structures</li> </ul> | <ul style="list-style-type: none"> <li><b>Existing Forest Roads</b></li> <li> Active Primary</li> <li> Secondary (upgrade)</li> <li> Inactive Spur</li> <li> Closed</li> <li><b>Existing SESF Road Features</b></li> <li> Culvert</li> <li> Road Points</li> <li> Rock Pit</li> </ul> | <ul style="list-style-type: none"> <li><b>Changes</b></li> <li> Proposed Road to be removed</li> <li> Proposed Road to Add</li> <li><b>Streams</b></li> <li> Anadromous</li> <li> Tributary to Anadromous <math>\le 12\%</math></li> <li> Tributary to Anadromous <math>&gt;12\%</math></li> <li> Surface Waters</li> <li> Thorne Bay Codified Watershed</li> <li> Eagle Nest</li> </ul> |
|---|---|--|

**APPENDIX A2  
SSE-1369K  
Bay View Timber Sale Map  
Map Page: E  
"Unit 3 South"**



**DIVISION OF FORESTRY**





T71S, R84E; Section 26, 35.  
Copper River Meridian

Contour Interval = 40 feet  
Source: 2018 USFS LiDAR

**Legend**

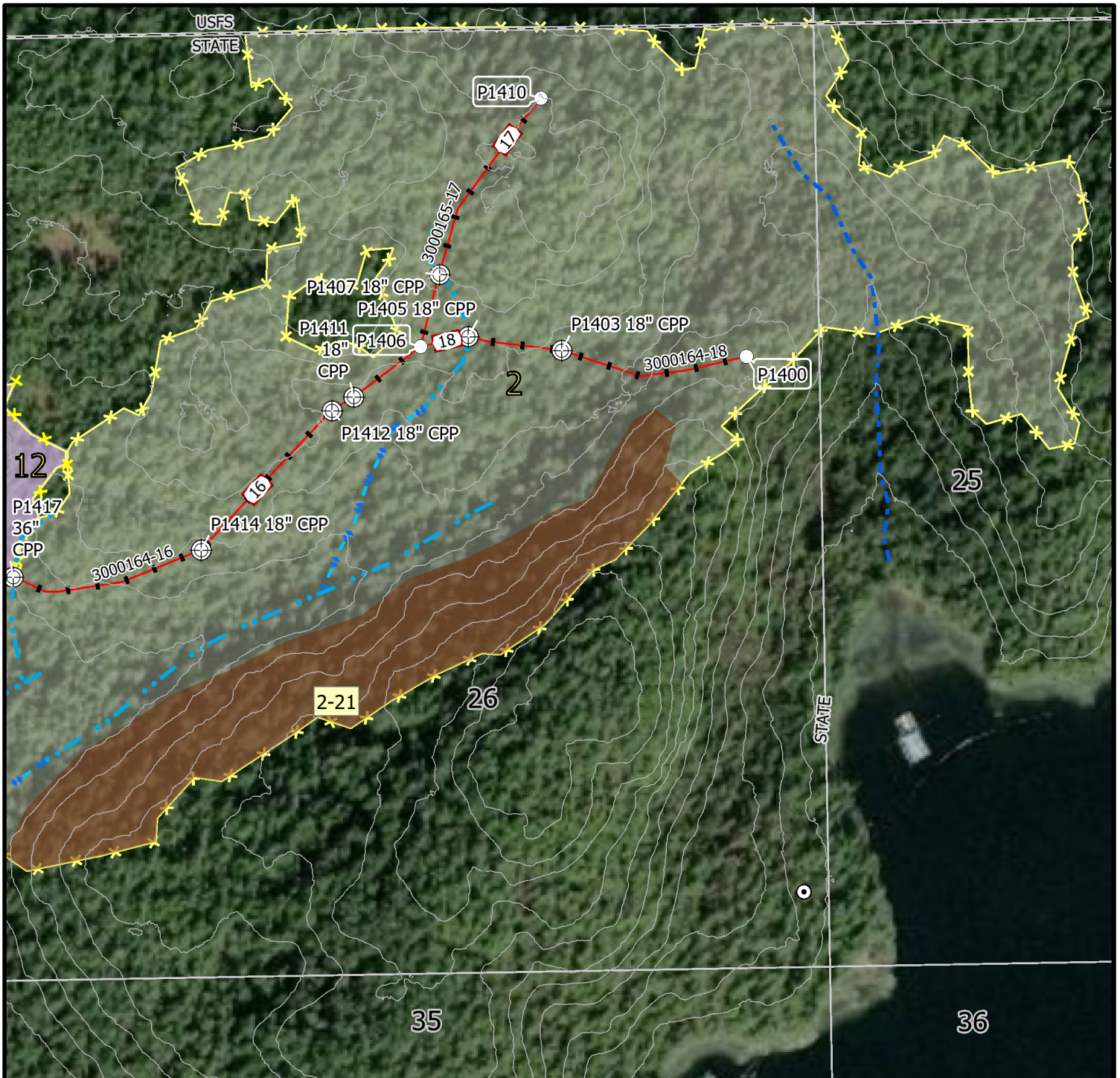
- |                               |                                    |                               |
|-------------------------------|------------------------------------|-------------------------------|
| Proposed Timber Sale(s)       | Existing Forest Roads              | Changes                       |
| Proposed Small Sale Areas     | Active Primary                     | Proposed Road to be removed   |
| Cable Logging Setting         | Secondary (upgrade)                | Proposed Road to Add          |
| <b>Proposed Harvest Roads</b> | Inactive Spur                      | <b>Streams</b>                |
| Primary                       | Closed                             | Anadromous                    |
| Secondary                     | <b>Existing SESF Road Features</b> | Tributary to Anadromous ≤ 12% |
| Spur                          | Culvert                            | Tributary to Anadromous >12%  |
| Proposed Drainage Structures  | Road Points                        | Surface Waters                |
| Rock Pit                      | Rock Pit                           | Thorne Bay Codified Watershed |
|                               |                                    | Eagle Nest                    |

**APPENDIX A2**  
**SSE-1369K**  
**Bay View Timber Sale Map**  
**Map Page: F**  
**"Unit 2 West"**



**DIVISION OF FORESTRY**





0 200 400 800 Feet  
1 inch = 400 feet

T71S, R84E; Section 25, 26, 35, 36.  
Copper River Meridian

Contour Interval = 40 feet  
Source: 2018 USFS LiDAR

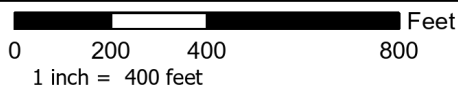
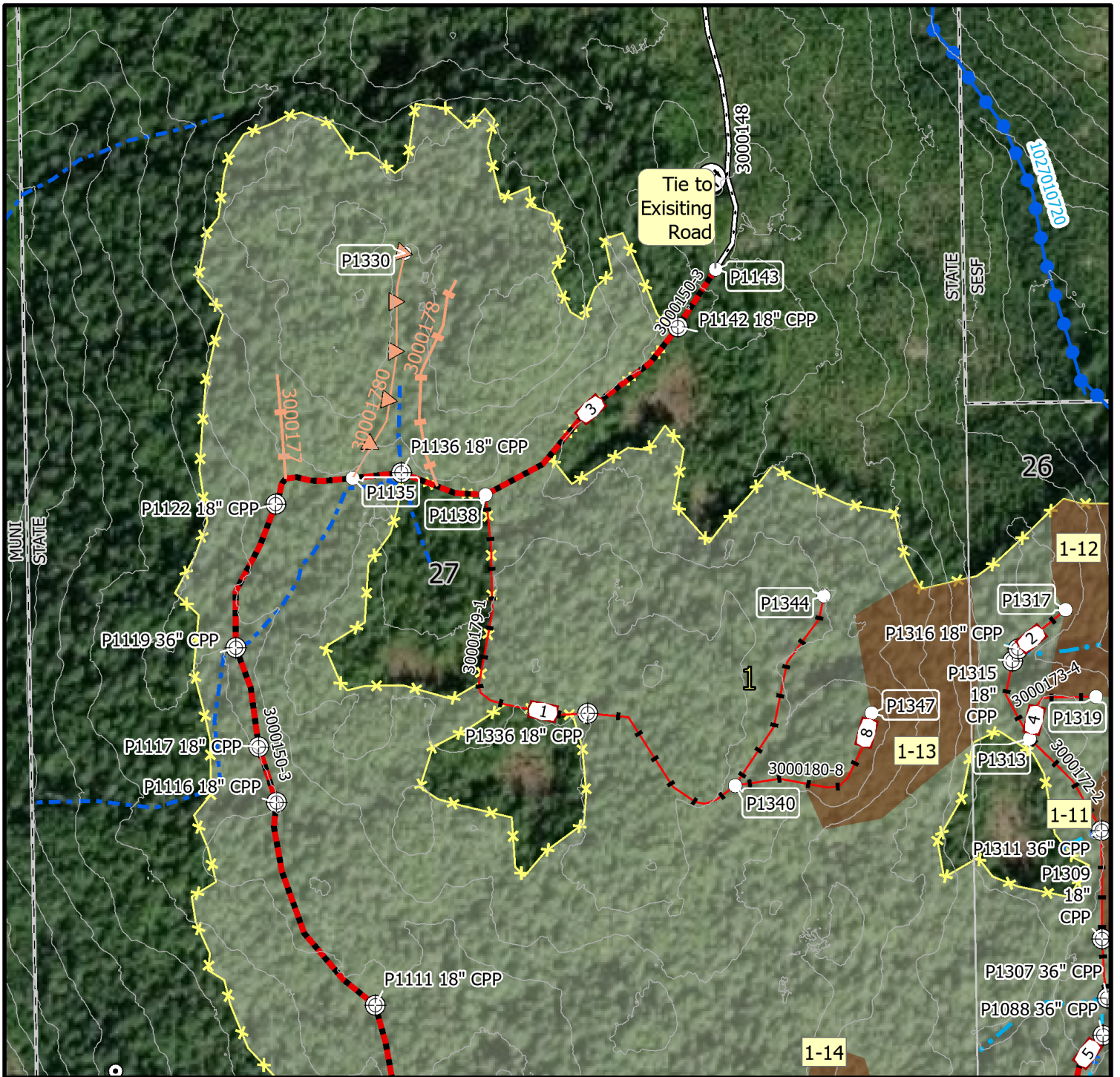
**Legend**

- |                               |                                    |                               |
|-------------------------------|------------------------------------|-------------------------------|
| Proposed Timber Sale(s)       | Existing Forest Roads              | Changes                       |
| Proposed Small Sale Areas     | Active Primary                     | Proposed Road to be removed   |
| Cable Logging Setting         | Secondary (upgrade)                | Proposed Road to Add          |
| <b>Proposed Harvest Roads</b> | Inactive Spur                      | <b>Streams</b>                |
| Primary                       | Closed                             | Anadromous                    |
| Secondary                     | <b>Existing SESF Road Features</b> | Tributary to Anadromous ≤ 12% |
| Spur                          | Culvert                            | Tributary to Anadromous >12%  |
| Proposed Drainage Structures  | Road Points                        | Surface Waters                |
| Rock Pit                      | Eagle Nest                         | Thorne Bay Codified Watershed |

**APPENDIX A2**  
**SSE-1369K**  
**Bay View Timber Sale Map**  
**Map Page: G**  
**"Unit 2 East"**



**DIVISION OF FORESTRY**



T71S, R84E; Section 26, 27.  
Copper River Meridian

Contour Interval = 40 feet  
Source: 2018 USFS LiDAR

**Legend**

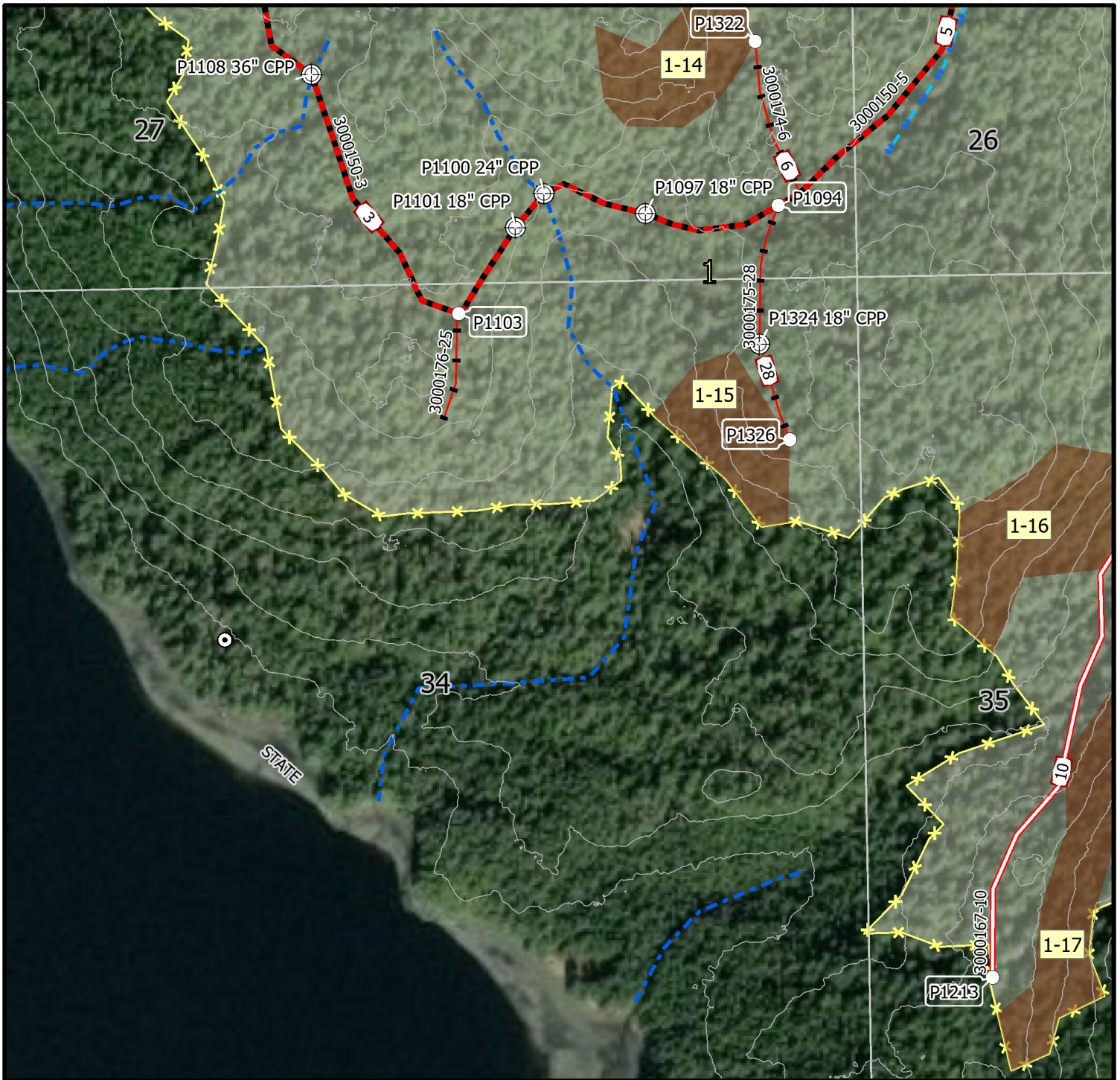
- |   |   |  |
|---|---|--|
| <ul style="list-style-type: none"> <li> Proposed Timber Sale(s)</li> <li> Proposed Small Sale Areas</li> <li> Cable Logging Setting</li> <li><b>Proposed Harvest Roads</b></li> <li> Primary</li> <li> Secondary</li> <li> Spur</li> <li> Proposed Drainage Structures</li> </ul> | <ul style="list-style-type: none"> <li><b>Existing Forest Roads</b></li> <li> Active Primary</li> <li> Secondary (upgrade)</li> <li> Inactive Spur</li> <li> Closed</li> <li><b>Existing SESF Road Features</b></li> <li> Culvert</li> <li> Road Points</li> <li> Rock Pit</li> </ul> | <ul style="list-style-type: none"> <li><b>Changes</b></li> <li> Proposed Road to be removed</li> <li> Proposed Road to Add</li> <li><b>Streams</b></li> <li> Anadromous</li> <li> Tributary to Anadromous ≤ 12%</li> <li> Tributary to Anadromous &gt;12%</li> <li> Surface Waters</li> <li> Thorne Bay Codified Watershed</li> <li> Eagle Nest</li> </ul> |
|---|---|--|

**APPENDIX A2**  
**SSE-1369K**  
**Bay View Timber Sale Map**  
**Map Page: H**  
**"Unit 1 North"**



**DIVISION OF FORESTRY**





0 200 400 800 Feet  
1 inch = 400 feet

T71S, R84E; Section 26, 27, 34, 35.  
Copper River Meridian

Contour Interval = 40 feet  
Source: 2018 USFS LiDAR

**Legend**

- |   |   |  |
|---|---|--|
| <ul style="list-style-type: none"> <li> Proposed Timber Sale(s)</li> <li> Proposed Small Sale Areas</li> <li> Cable Logging Setting</li> <li><b>Proposed Harvest Roads</b></li> <li> Primary</li> <li> Secondary</li> <li> Spur</li> <li> Proposed Drainage Structures</li> </ul> | <ul style="list-style-type: none"> <li><b>Existing Forest Roads</b></li> <li> Active Primary</li> <li> Secondary (upgrade)</li> <li> Inactive Spur</li> <li> Closed</li> <li><b>Existing SESF Road Features</b></li> <li> Culvert</li> <li> Road Points</li> <li> Rock Pit</li> </ul> | <ul style="list-style-type: none"> <li><b>Changes</b></li> <li> Proposed Road to be removed</li> <li> Proposed Road to Add</li> <li><b>Streams</b></li> <li> Anadromous</li> <li> Tributary to Anadromous ≤ 12%</li> <li> Tributary to Anadromous &gt;12%</li> <li> Surface Waters</li> <li> Thorne Bay Codified Watershed</li> <li> Eagle Nest</li> </ul> |
|---|---|--|

**APPENDIX A2**  
**SSE-1369K**  
**Bay View Timber Sale Map**  
**Map Page: I**  
**"Unit 1 Middle"**



**DIVISION OF FORESTRY**





T71S, R84E; Section 35.  
Copper River Meridian

Contour Interval = 40 feet  
Source: 2018 USFS LiDAR

**Legend**

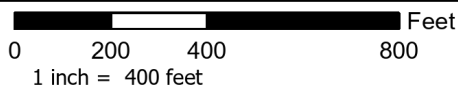
- |                               |                                    |                               |
|-------------------------------|------------------------------------|-------------------------------|
| Proposed Timber Sale(s)       | Existing Forest Roads              | Changes                       |
| Proposed Small Sale Areas     | Active Primary                     | Proposed Road to be removed   |
| Cable Logging Setting         | Secondary (upgrade)                | Proposed Road to Add          |
| <b>Proposed Harvest Roads</b> | Inactive Spur                      | <b>Streams</b>                |
| Primary                       | Closed                             | Anadromous                    |
| Secondary                     | <b>Existing SESF Road Features</b> | Tributary to Anadromous ≤ 12% |
| Spur                          | Culvert                            | Tributary to Anadromous >12%  |
| Proposed Drainage Structures  | Road Points                        | Surface Waters                |
| Rock Pit                      | Eagle Nest                         | Thorne Bay Codified Watershed |

**APPENDIX A2**  
**SSE-1369K**  
**Bay View Timber Sale Map**  
**Map Page: J**  
**"Unit 1 South"**



**DIVISION OF FORESTRY**





T71S, R84E; Section 26, 27.  
Copper River Meridian

Contour Interval = 40 feet  
Source: 2018 USFS LiDAR

**Legend**

- |   |   |  |
|---|---|--|
| <ul style="list-style-type: none"> <li> Proposed Timber Sale(s)</li> <li> Proposed Small Sale Areas</li> <li> Cable Logging Setting</li> <li><b>Proposed Harvest Roads</b></li> <li> Primary</li> <li> Secondary</li> <li> Spur</li> <li> Proposed Drainage Structures</li> </ul> | <ul style="list-style-type: none"> <li> Existing Forest Roads</li> <li> Active Primary</li> <li> Secondary (upgrade)</li> <li> Inactive Spur</li> <li> Closed</li> <li><b>Existing SESF Road Features</b></li> <li> Culvert</li> <li> Road Points</li> <li> Rock Pit</li> </ul> | <ul style="list-style-type: none"> <li><b>Changes</b></li> <li> Proposed Road to be removed</li> <li> Proposed Road to Add</li> <li><b>Streams</b></li> <li> Anadromous</li> <li> Tributary to Anadromous ≤ 12%</li> <li> Tributary to Anadromous &gt;12%</li> <li> Surface Waters</li> <li> Thorne Bay Codified Watershed</li> <li> Eagle Nest</li> </ul> |
|---|---|--|

**APPENDIX A2**  
**SSE-1369K**  
**Bay View Timber Sale Map**  
**Map Page: K**  
**"Unit 1 Access"**



**DIVISION OF FORESTRY**

