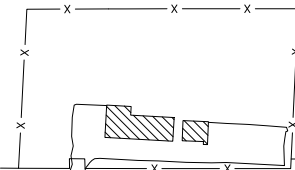
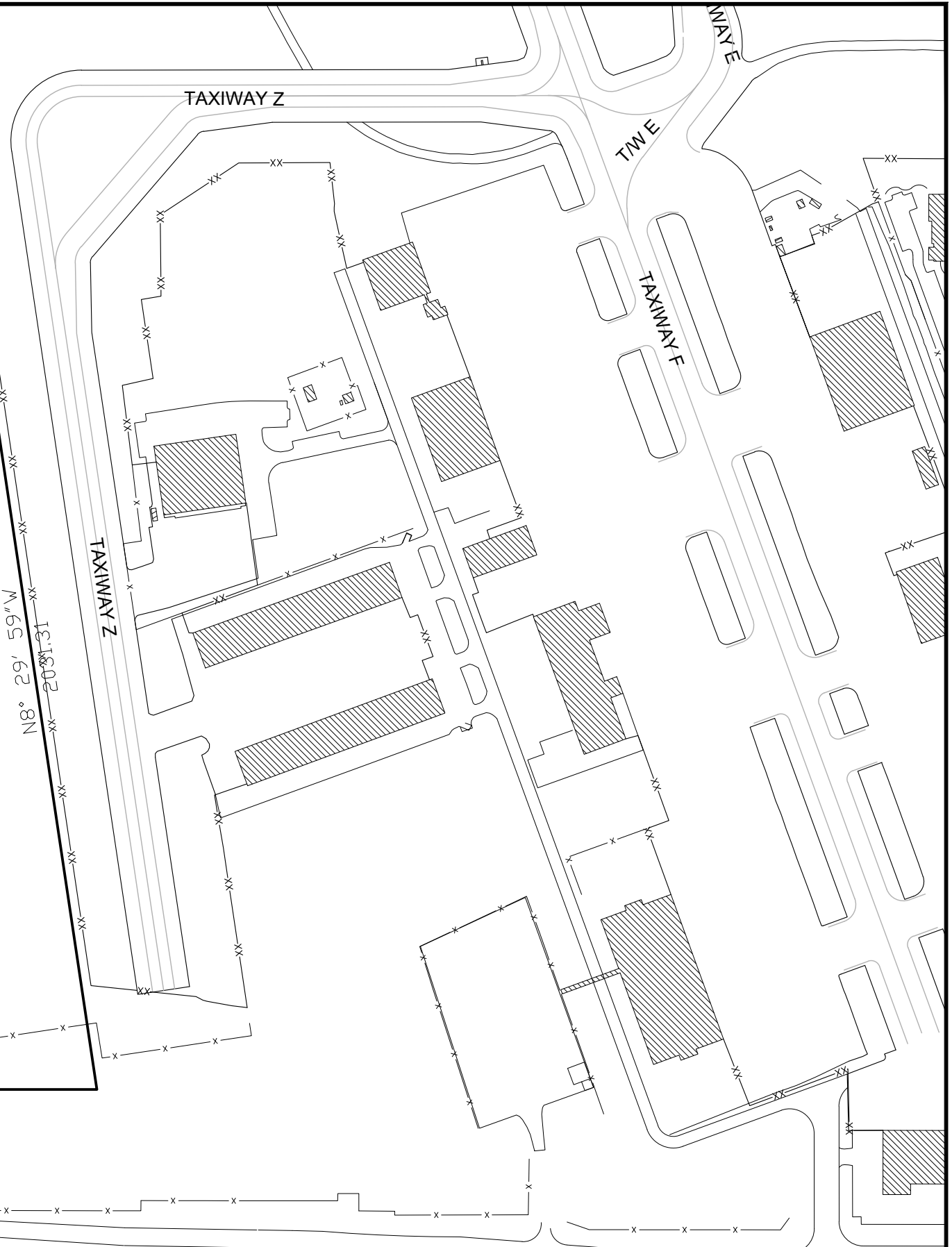
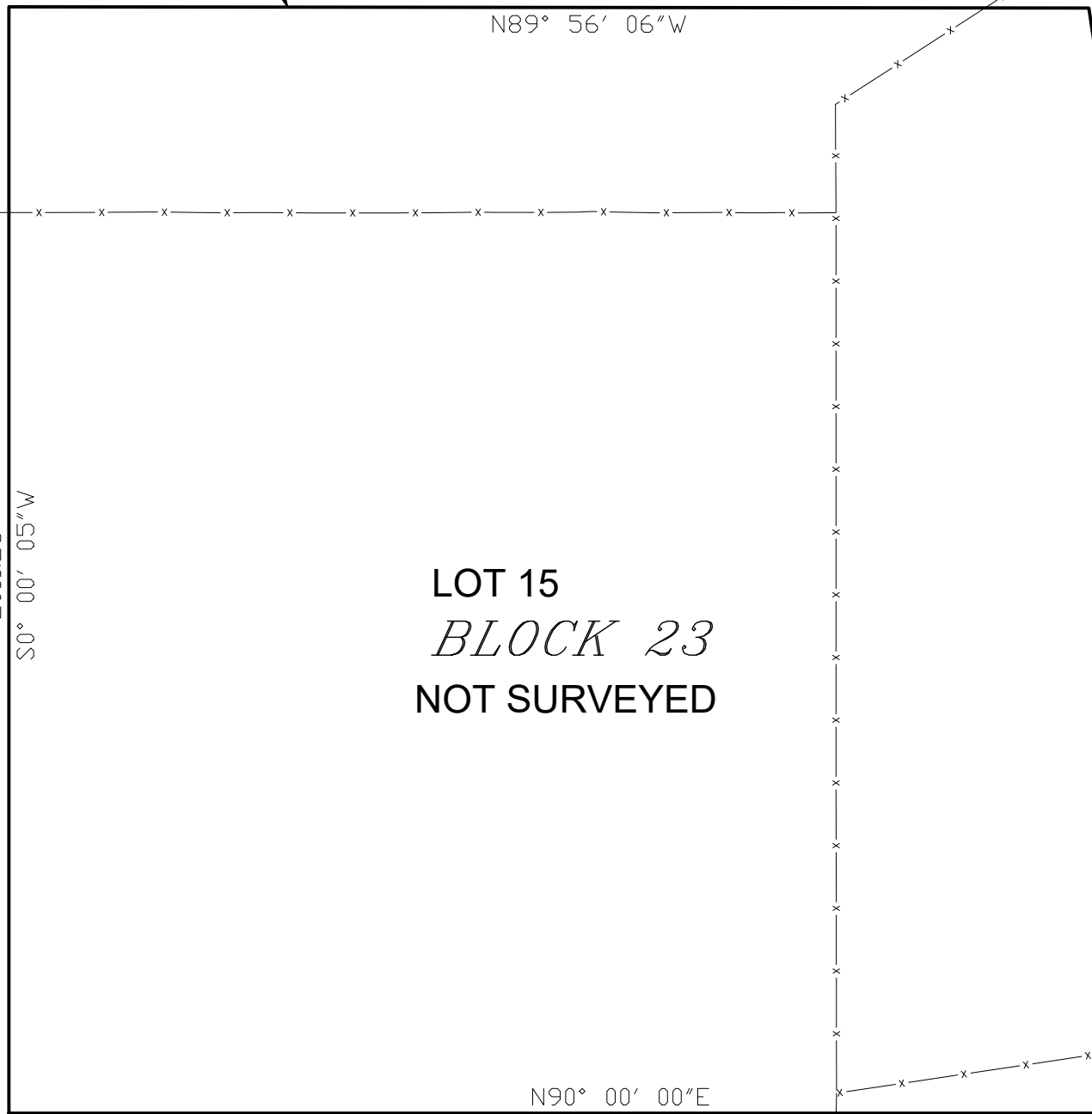


G:\ENGINEERING\ENG-LIBRARIES\EXHIBITS\ANC\LEASING\ALASKA DEVELOPMENT\32351 Draft Lease Exhibit.dwg NOV 04 2020 17:47:17

ADA 32351  
4,246,285 Sq Ft  
97.5 ACRES +/-



RASPBERRY ROAD

0 150 300  
SCALE IN FEET

**AIRPORT LEASING**

STATE OF ALASKA  
DEPARTMENT OF TRANSPORTATION  
AND PUBLIC FACILITIES

Ted Stevens  
**Anchorage**  
International Airport  
AeroNexus

**EXHIBIT A**  
ADA NO: 32351  
EXHIBIT DATE: 11/5/20

DRAFTED: gp    CHECKED:    APPROVED:

SHEET  
1  
of  
1