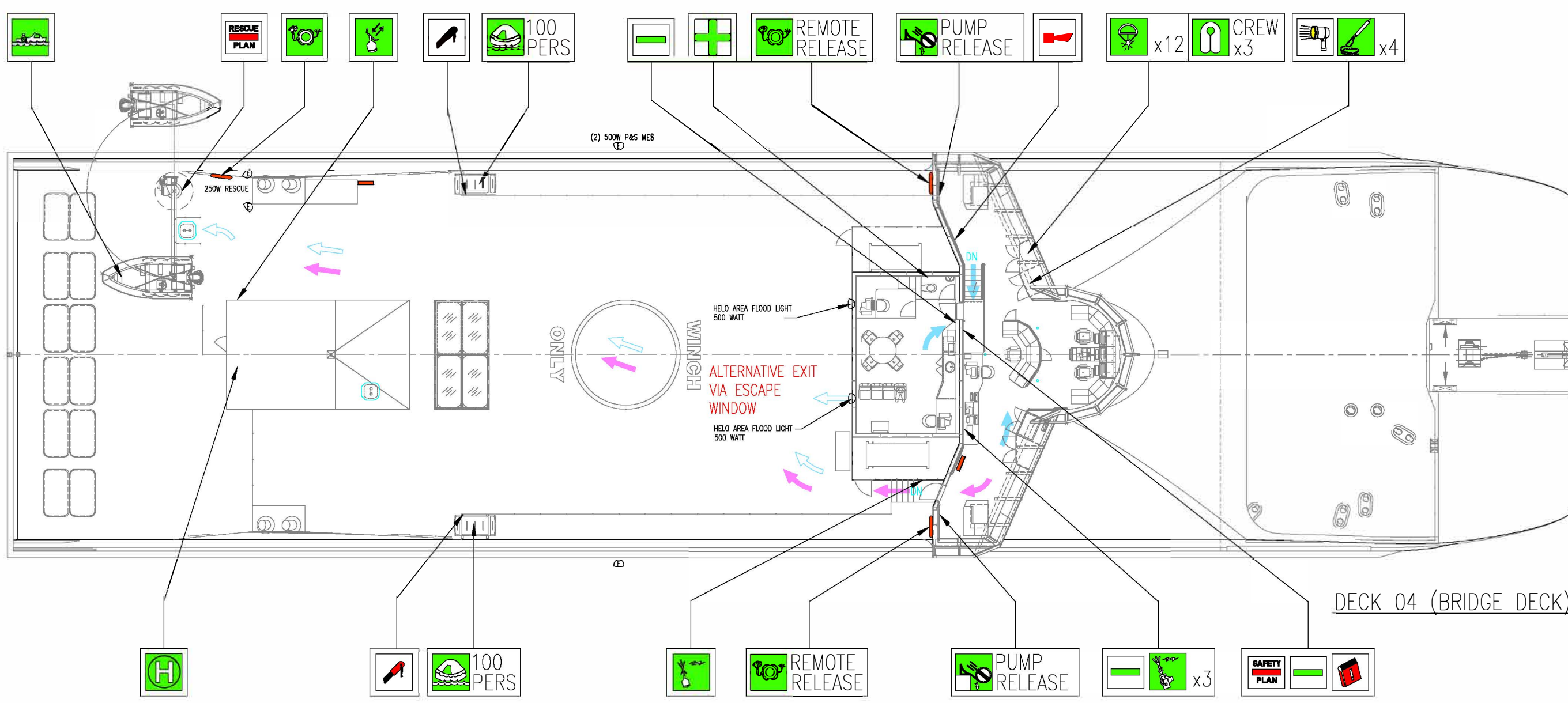


PRINCIPAL DIMENSIONS	
Length Overall (deck)	71.75m 235' - 5"
Length Waterline (Design)	64.20m 210' - 8"
Beam Moulded	18.00m 59' - 1"
Strength (Design)	2.55m 8' - 5"
Design Speed	35.5 knots
Passenger Capacity	250
Vehicle Capacity	35 cars 30 cars and 3 small truck trailers

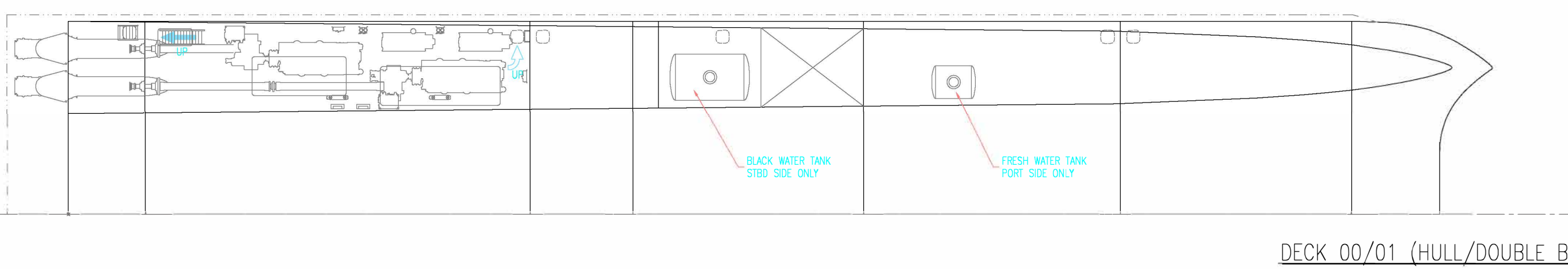
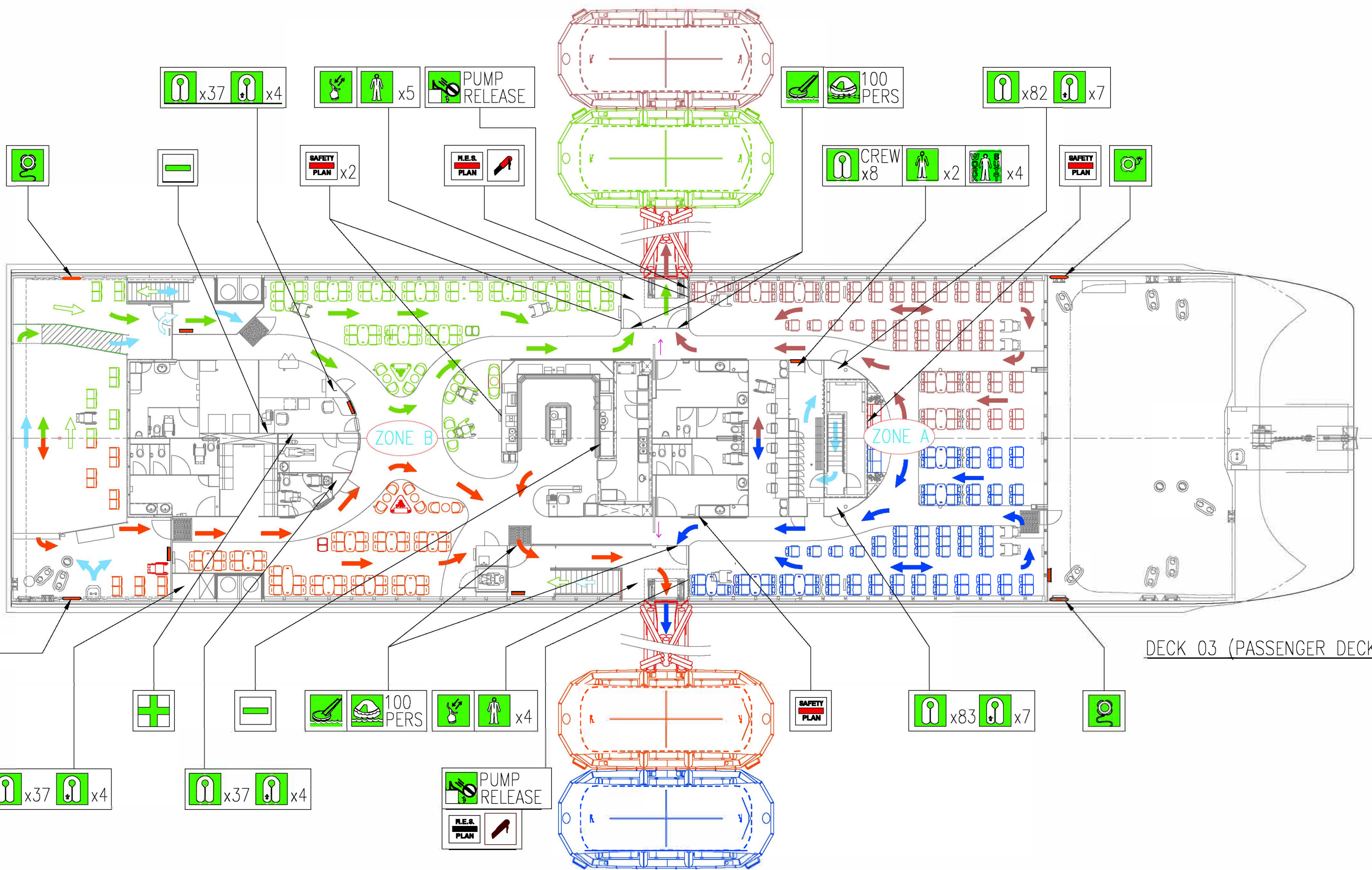
		DIRECTORS DRAWING No: 5000-00-2018 PROJECT: ALASKA MARINE HIGHWAYS FVF TITLE: GENERAL ARRANGEMENT 71.75m CATAMARAN FERRY DRAWING No: NG408-650-01-1 Sheet 1 of 15 Scale 1:100 Date 19-02-02	15 FINAL AS BUILT 20-03-04 FOR MODIFICATIONS REFER TO DOCUMENT 150-02-1 ISSUE MODIFICATIONS Drawn By: TLJ/CAC Checked By: GAS Date: 19-02-02
--	--	--	---



ON BOARD SAFETY EQUIPMENT
COMPLIANT TO HSC 2000

L.S.A.	SAFETY EQUIPMENT ITEM	QTY IN No
	LIFE RAFT, 100 PERSONS EACH, SELF-RIGHTING, B-PACK	4
	MARINE EVACUATION SLIDE, 14m IN LENGTH	2
	M.E.S. & LIFERAFT REMOTE RELEASE CONTROLS	4
	RESCUE BOAT	1
	SEARCH AND RESCUE TRANSPONDER (S.A.R.T.)	3
	EMERGENCY POSITION INDICATING RADIO BEACON (E.P.I.R.B.)	1
	GENERAL ALARM SYSTEM, SHIP WIDE FROM P.A.	1
	VHF RADIO, HAND HELD PORTABLE, C/W CHARGER+BATT'S	3
	DAYLIGHT SIGNALLING LAMP	1
	ROCKET PARACHUTE FLARES	12
	LIFEBUOY, C/W LIGHT AND SMOKE. (REMOTE RELEASE WHERE INDICATED)	3
	LIFEBUOY, C/W 30m (98') LINE	4
	LIFEBUOY, C/W LIGHT	4
	LIFEJACKET, ADULT C/W LIGHT	276
	LIFEJACKET, CHILD'S C/W LIGHT	26
	CREW LIFEJACKETS C/W LIGHT [TYPE III]	11
	CREW WORKSUIT PFD C/W LIGHT [TYPE V]	4
	IMMERSION SUIT	11
	LINE THROWING APPLIANCE	4
	SAFETY KNIFE	4
	SAFETY PLAN	5
	RESCUE BOAT AND DAVIT OPERATING INSTRUCTIONS	1
	MES OPERATING INSTRUCTIONS	2
	MUSTER LIST	7
	HSC CODE TRAINING MANUAL	1
	HELO OPS TOOL BOX	1
	MEDICAL KIT	2
	EVACUATION AND LIFE JACKET DONNING INSTRUCTIONS *	250

* SAFETY INSTRUCTION CARD LOCATED ADJACENT TO EACH SEAT



INTERNATIONAL AUTHORITY APPROVAL
USCG PER SOLAS/HSC CODE CATEGORY B FOR INTERNATIONAL VOYAGES AS EQUIVALENT TO 46 CFR SUBCHAPTER H FOR DOMESTIC VOYAGES

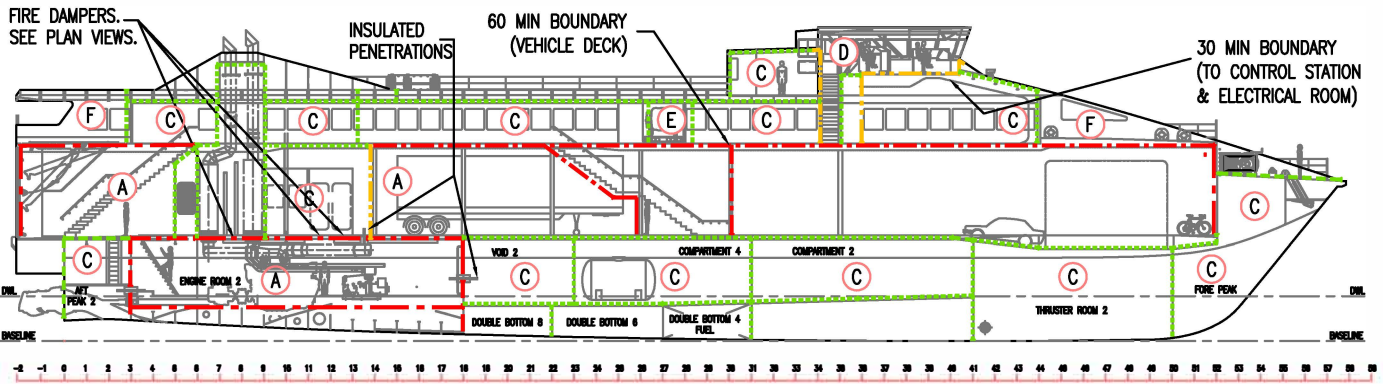
CLASSIFICATION
* 1A1 HSLC R3, CAR FERRY A, EO

PERSONS ON BOARD
250 PASSENGERS
10 CREW

- KEY**
- LIFE RAFT A EVACUATION ROUTE
 - LIFE RAFT B EVACUATION ROUTE
 - LIFE RAFT C EVACUATION ROUTE
 - LIFE RAFT D EVACUATION ROUTE
 - SECONDARY MEANS OF ESCAPE FROM SOLARIUM DECK. ONLY TO BE USED IN EXTREME SITUATIONS. EG. IF SNACK BAR AREA IS IMPASSABLE.
 - CREW EVACUATION ROUTE
 - CREW EVACUATION TO RESCUE BOAT ROUTE
 - CREW SECONDARY EVACUATION ROUTE

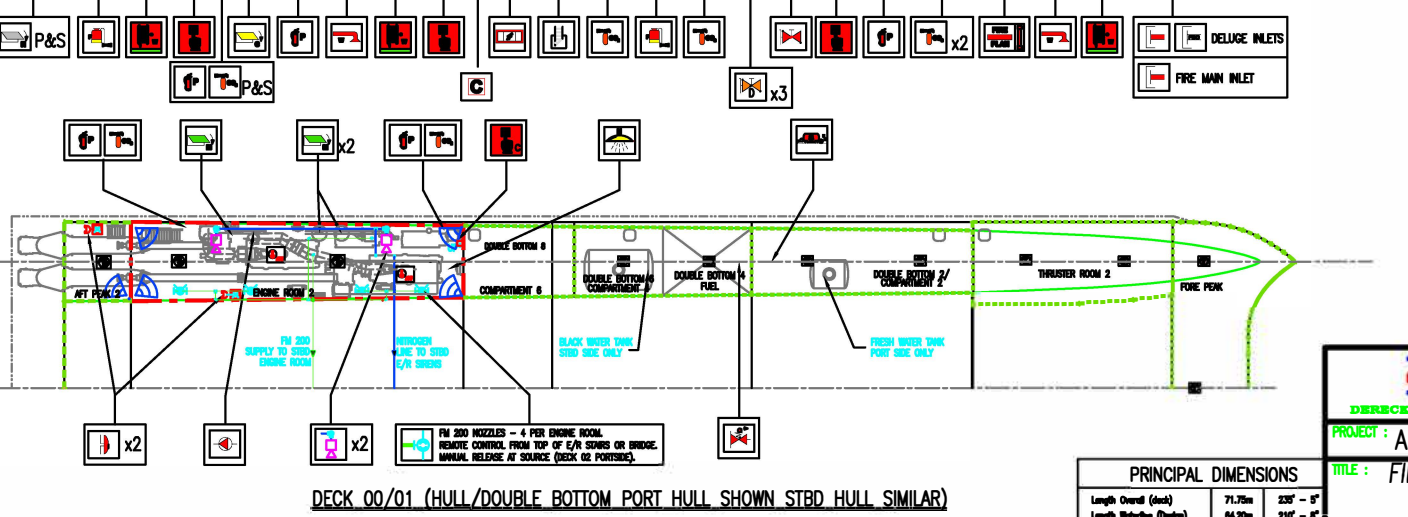
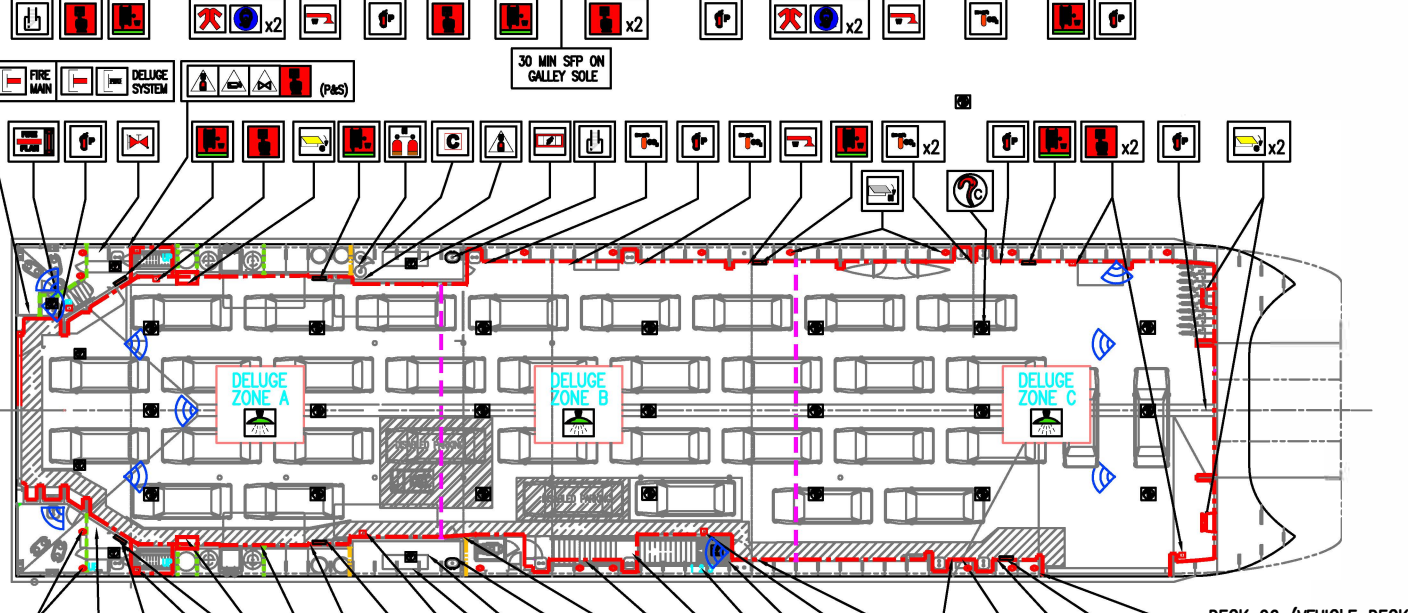
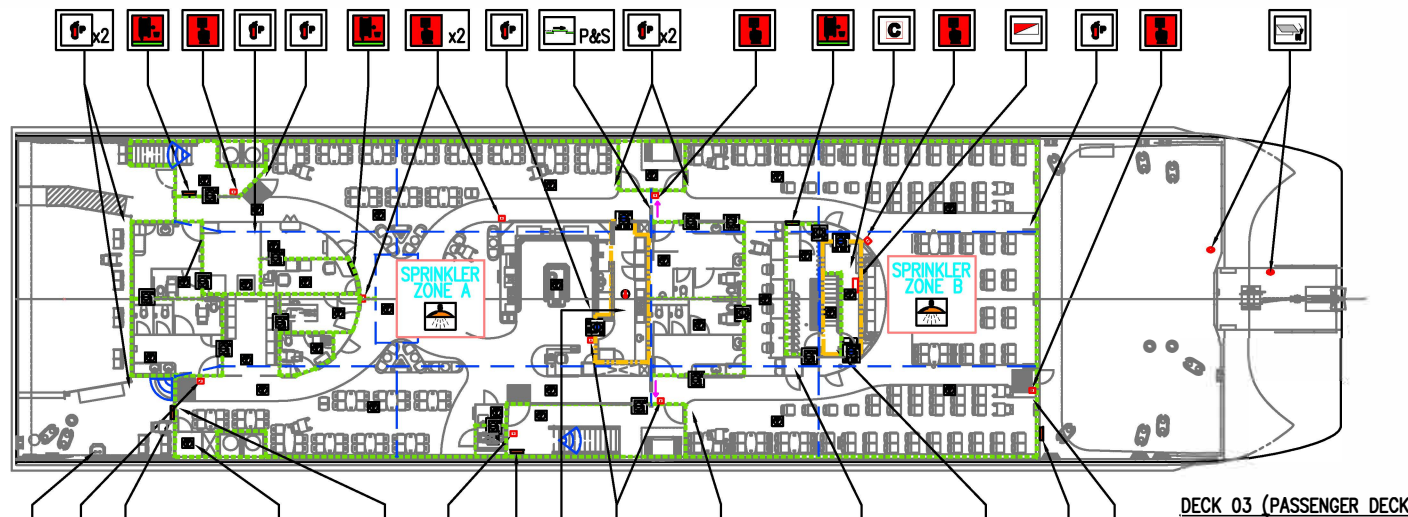
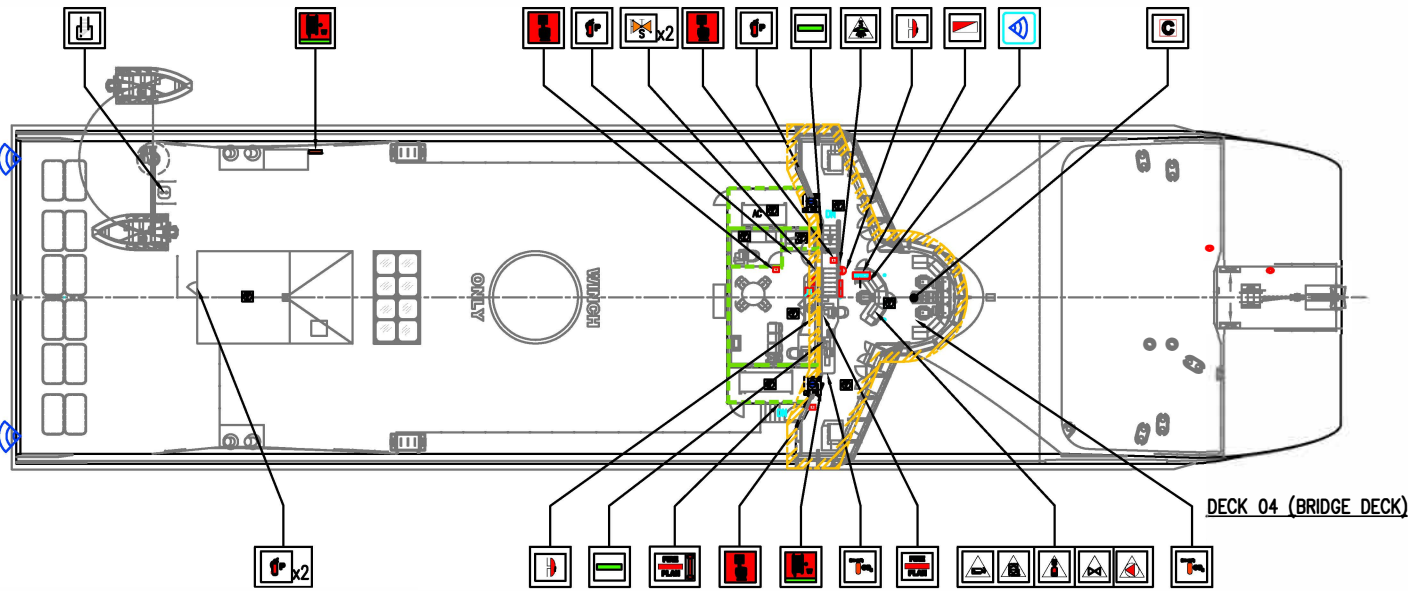
 DERECKTOR SHIPYARDS PROJECT : ALASKA MARINE HIGHWAYS FVF TITLE : SAFETY PLAN LIFESAVING APPLIANCES DRAWING No : NG408-684-01-1	DERECKTOR'S DRAWING No : 5000-00-2144-00	ISSUE	MODIFICATIONS
	Drawn By : GH Checked By : JL Started : 10-01-03 Plot Date : 24-03-04		
Sheet 1 of 5 Issue 5 Scale 1:200			
<small>All Dimensions in "mm" unless otherwise stated. General tolerance ± 1.0 mm & ± 1 degree, unless otherwise stated.</small> <small>COMMERCIAL IN CONFIDENCE THIS DRAWING/DOCUMENT IS CONFIDENTIAL AND MUST NOT BE USED FOR MANUFACTURE OR COPIED OR COMMUNICATED TO ANY OTHER PERSON OR COMPANY WITHOUT THE EXPRESS PERMISSION OF NIGEL GEE AND ASSOCIATES LIMITED.</small>		 <small>Nigel Gee and Associates Limited Floors 2/3 Building 14 Sharnbrook Quay Southampton, England SO14 5GL Tel: +44 (23) 8022 8555 Fax: +44 (23) 8022 8555</small>	

5	UPDATE WITH CHANGES T.S. JORGENS 4.16.2010
4	AS-BUILT - NO CHANGES JMB 24/03/04
3	UPDATE & SIMPLIFICATION JMB 27/02/04
2	UPDATE & SIMPLIFICATION JMB 24/02/04
1	GENERAL UPDATE GRH 16/06/03
C	GENERAL UPDATE GRH 06/06/03
B	GENERAL UPDATE GRH 22/05/03



KEY	
	60min STRUCTURAL FIRE PROTECTION
	30min STRUCTURAL FIRE PROTECTION
	SMOKE TIGHT DIVISION
	DRAUGHT STOP
	SPACE CLASSIFICATION A - MAJOR FIRE HAZARD
	SPACE CLASSIFICATION B - MODERATE FIRE HAZARD
	SPACE CLASSIFICATION C - MINOR FIRE HAZARD
	SPACE CLASSIFICATION D - CONTROL STATION
	SPACE CLASSIFICATION E - EVACUATION STATIONS
	SPACE CLASSIFICATION F - OPEN SPACE

NOTE : SPACE CLASSIFICATIONS AS DEFINED IN HSC 2000 7.3.1 FOR FULL DEFINITION SEE NG408-687-01-1 FIRE INTEGRITY PLAN.



ON BOARD FIRE SAFETY EQUIPMENT
COMPLIANT TO HSC 2000

ICON	EQUIPMENT ITEM	QTY IN No
	CONTROL STATION	4
	FIRE PLAN, TUBE	4
	MUSTER LIST	3
	ADDRESSABLE IONIZATION SMOKE DETECTOR	61
	CONVENTIONAL IONIZATION SMOKE DETECTOR (VEHICLE DECK = 23) (ENG RM / AFT PEAK = 6)	29
	ADDRESSABLE THERMAL DETECTOR	1
	THERMAL DETECTOR (190°)	4
	FIRE ALARM PANEL	2
	FIRE ALARM PUSH BUTTON (ADDRESSABLE)	22
	FIRE ALARM BUTTON (CONVENTIONAL)	2
	STROBE WARNING LIGHT	4
	ALARM BELL	6
	SMOKE TIGHT SLIDING DOOR (AUTOMATIC)	2
	AIR VENT/EXHAUST FIRE DAMPER - MACHINERY SPACE	6
	AIR VENT/EXHAUST FIRE DAMPER - CARGO SPACE	4
	AIR VENT - HULL COMPARTMENTS. NOTE 'o' ON FIRE PLAN	17
	REMOTE CTRL VENT./EX. AIR SHUT-OFF (MACH'Y & CARGO)	3
	30 MIN FIRE DAMPER (AIR CONDITIONING DUCT) BLUE (A) = ACCOM	6
	SMOKE DAMPER (AIR CONDITIONING DUCT) GREY (A) = ACCOM	14
	REMOTE CTRL A/C DAMPER SHUT-OFFS	1
	ESCAPE HATCH WITH LADDER	4
	SPRINKLER & DELUGE PUMP INSTALLATION	2
	SPRINKLER PROTECTED ZONE	
	DELUGE PROTECTED ZONE	
	SPRINKLER / DELUGE REMOTE RELEASE	1
	SPRINKLER ISOLATION VALVE	2
	DELUGE MANUAL ACTUATION & ISOLATION VALVES	3
	FIRE MAIN ISOLATION VALVE	1
	FIRE PUMP 2	
	FIRE PUMP REMOTE CONTROLS	1
	CO2 FIRE EXTINGUISHER (15LB)	18
	DRY CHEM (ABC) EXTINGUISHER (PASSENGER DECK = 15 x 10LB) (ENG RM & VEHICLE DECK = 12 x 30LB)	27
	FOAM APPLICATOR UNIT + SPARE TANK (20L)	2
	REMOTE FUEL SHUT-OFF 3	
	FUEL SHUT OFF VALVE	2
	FM 200 CYLINDERS 1	
	REMOTE RELEASE STATION	3
	SPACE PROTECTED WITH FM200	2
	FM 200 OPERATION SIREN (NITROGEN ACTUATED)	4
	20M FIRE HOSE AND NOZZLE. HYDRANTS ADJACENT.	15
	FIREMAN'S OUTFIT	4
	BREATHING APPARATUS AND 2 X SPARE AIR CYLINDERS	4
	WATER FOG APPLICATOR	2
	CCTV CAMERAS 27	
	CCTV MONITOR	1
	EMERGENCY SWITCHBOARD (P OR S DEPENDS ON FAILURE)	1
	INTERNATIONAL SHORE CONNECTION (FIRE MAIN & DELUGE)	4
	FIRE DEPARTMENT CONNECTION (DELUGE SYSTEM ONLY)	2

PRINCIPAL DIMENSIONS	
Length Overall (Deck)	71.70m 235' - 0"
Length Waterline (Design)	64.50m 211' - 0"
Beam Molded	18.00m 59' - 1"
Draught (Design)	2.50m 8' - 0"
Design Speed	35.5 knots
Passenger Capacity	250
Vehicle Capacity	30 cars and 3 small truck trailers

	DIRECTOR'S DRAWING No : 5000-00-2142	1 GENERAL HULLER/STORK SYSTEM UPDATE, REVISED, JML 25/09/14
PROJECT : ALASKA MARINE HIGHWAYS FVF	TITLE : FIRE ZONE / CONTROL PLAN	2 GENERAL HULLER/STORK SYSTEM UPDATE, REVISED, GH 29/08/14
DRAWING No : NG408-687-02-1	Sheet 1 of 1	Issue 1
Scale 1:200	Started 16-06-03	Plot Date 29-08-03
Drawn By GRH	Checked By JL	

INTERNATIONAL SHORE CONNECTION (FIRE MAIN & DELUGE)
FIRE DEPARTMENT CONNECTION (DELUGE SYSTEM ONLY)

INTERNATIONAL AUTHORITY APPROVAL
USCG PER SOLAS/HSC CODE CATEGORY B FOR INTERNATIONAL VOYAGES AS EQUIVALENT TO 46 CFR SUBCHAPTER H FOR DOMESTIC VOYAGES

CLASSIFICATION KEEL LAID
1A1 DNV HSLC R3, NOVEMBER 2002
CAR FERRY A, EO

NG GEE AND ASSOCIATES LTD
Nigel Gee and Associates Limited
Floor 2/5 Building 14
Wharf Street
Southampton, England
SO14 2DL
Tel: +44 (0) 23 802 0000
Fax: +44 (0) 23 802 0001

INTERNATIONAL AUTHORITY APPROVAL
USCG PER SOLAS/HSC CODE CATEGORY B FOR INTERNATIONAL VOYAGES AS EQUIVALENT TO 46 CFR SUBCHAPTER H FOR DOMESTIC VOYAGES

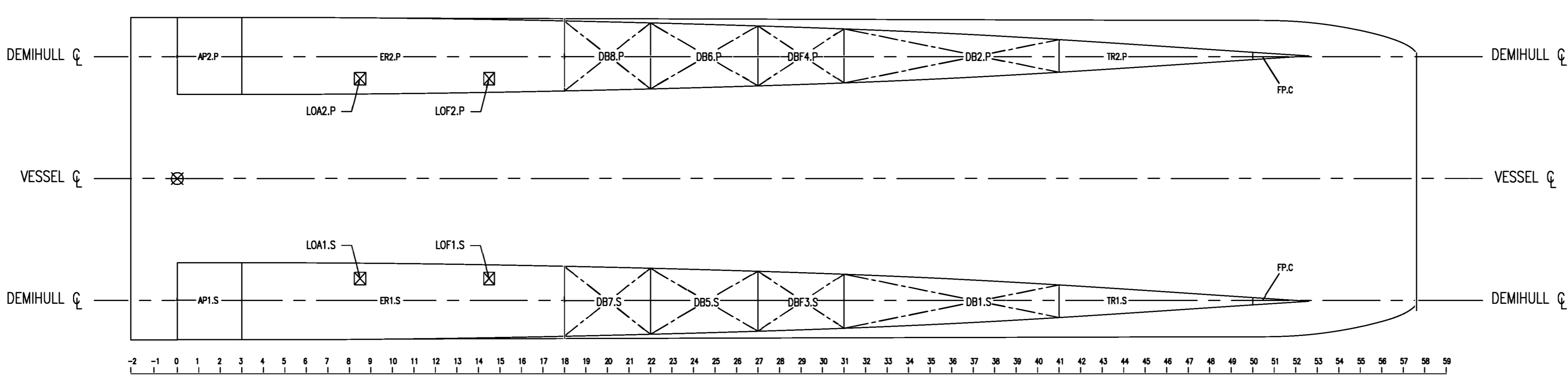
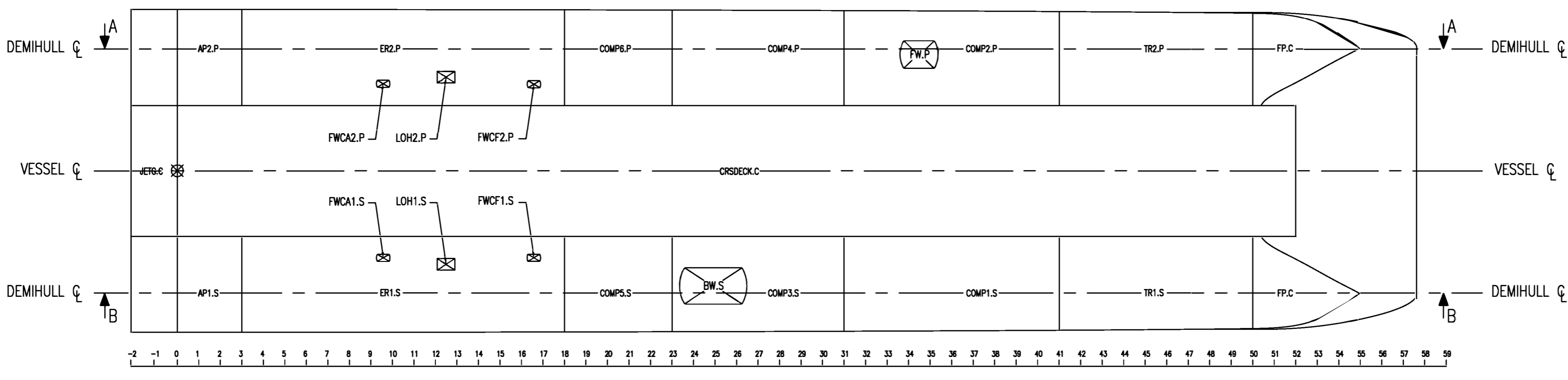
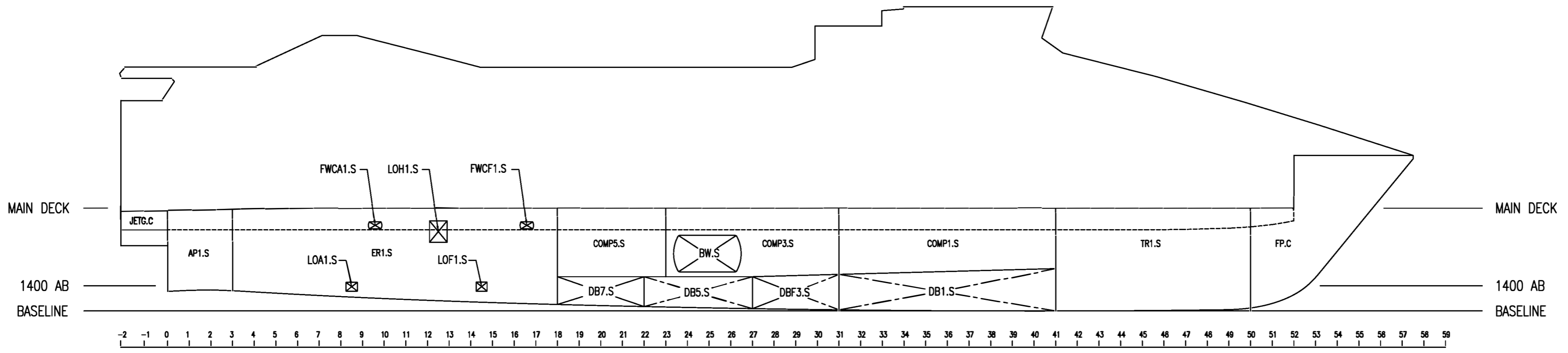
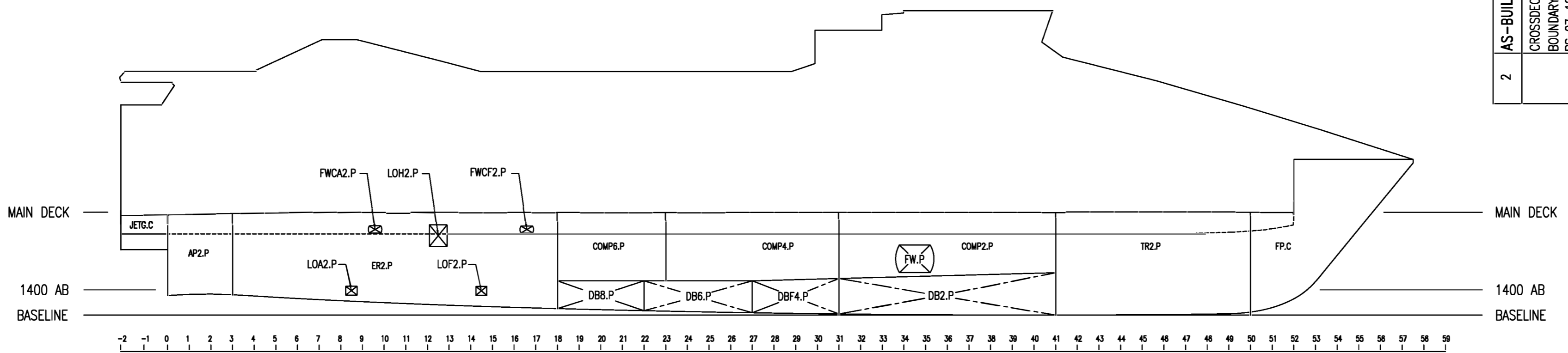
CLASSIFICATION KEEL LAID
1A1 DNV HSLC R3, NOVEMBER 2002
CAR FERRY A, EO

2	AS-BUILT 03-24-04 (MIB)	CROSSDECK WATERTIGHT BOUNDARY SHOWN	RS 07-12-04	TANK CAPACITY TABLE CHANGED	RD IMPERIAL UNITS	TYPING ERRORS CORRECTED	02-04-03 (RAH)	ISSUE	MODIFICATIONS	Drawn By	Checked By	MW/JL	Plot Date	03/24/04
1								ISSUE	MODIFICATIONS	RJS			12/16/02	

PROJECT : ALASKA MARINE HIGHWAYS FVF
 TITLE : TANK CAPACITY PLAN

DRAWING No : NG408-525-01-1
 Sheet 1 of 2
 Scale 1:200

NG GEE AND ASSOCIATES LTD
 1000 West 10th Avenue, Suite 1000
 Anchorage, Alaska 99501
 Phone: 415.262.8800
 Fax: 415.262.8800
 Email: info@nggee.com



TANK CAPACITY TABLE

TANK DESCRIPTION	TANK ID	CONTENTS	SpGr (tons/ft ³)	MASS (tons)	VOLUME (ft ³)
BLACK WATER (STBD)	BW.S	FW	0.0312	15.02	481.41
FRESH WATER (PORT)	FW.P	FW	0.0312	4.17	133.65
ENGINE COOLING FW AFT (PORT)	FWCA2.P	FW	0.0312	0.094	3.01 (*)
ENGINE COOLING FW AFT (STBD)	FWCA1.S	FW	0.0312	0.094	3.01 (*)
ENGINE COOLING FW FWD (PORT)	FWCF2.P	FW	0.0312	0.094	3.01 (*)
ENGINE COOLING FW FWD (STBD)	FWCF1.S	FW	0.0312	0.094	3.01 (*)
LUBE OIL HEADER (PORT)	LOH2.P	LO	0.0275	0.699	25.42
LUBE OIL HEADER (STBD)	LOH1.S	LO	0.0275	0.699	25.42
LUBE OIL AFT (PORT)	LOA2.P	LO	0.0275	0.194	7.05
LUBE OIL AFT (STBD)	LOA1.S	LO	0.0275	0.194	7.05
LUBE OIL FWD. (PORT)	LOF2.P	LO	0.0275	0.194	7.05
LUBE OIL FWD. (STBD)	LOF1.S	LO	0.0275	0.194	7.05
DOUBLE BOTTOM FUEL (PORT)	DBF4.P	MDO	0.0262	23.34	890.84
DOUBLE BOTTOM FUEL (STBD)	DBF3.S	MDO	0.0262	23.34	890.84

(*) Nominal capacity 22½ galls, recommended water load at max level 18½ galls.

COMPARTMENT DESCRIPTION

ROOM ID	ROOM DESCRIPTION
FP.C	FORE PEAK
TR1.S	BOW THRUSTER ROOM (STBD)
TR2.P	BOW THRUSTER ROOM (PORT)
COMP1.S	COMPARTMENT 1 (STBD)
COMP2.P	COMPARTMENT 2 (PORT)
COMP3.S	COMPARTMENT 3 (STBD)
COMP4.P	COMPARTMENT 4 (PORT)
COMP5.S	COMPARTMENT 5 (STBD)
COMP6.P	COMPARTMENT 6 (PORT)
ER1.S	ENGINE ROOM (STBD)
ER2.P	ENGINE ROOM (PORT)
AP1.S	AFT PEAK (STBD)
AP2.P	AFT PEAK (PORT)
JETG.C	JET GUARD
DB1.S	DOUBLE BOTTOM 1 (STBD)
DB2.P	DOUBLE BOTTOM 2 (PORT)
DBF3.S	DOUBLE BOTTOM 3 (STBD)
DBF4.P	DOUBLE BOTTOM 4 (PORT)
DB5.S	DOUBLE BOTTOM 5 (STBD)
DB6.P	DOUBLE BOTTOM 6 (PORT)
DB7.S	DOUBLE BOTTOM 7 (STBD)
DB8.P	DOUBLE BOTTOM 8 (PORT)
CRSDECK.C	CROSSDECK