

Attachment E – FVF Fairweather Pictures – Alaska DOT&PF – IFSB #2521S019



FVF Fairweather International Maritime Organization #IMO9265809



FVF Fairweather Leaving Haines, Alaska Terminal –Above vessel pictures taken May 2014

Attachment E – FVF Fairweather Pictures – Alaska DOT&PF – IFSB #2521S019



FVF Fairweather Aerial View – Picture taken August 2004

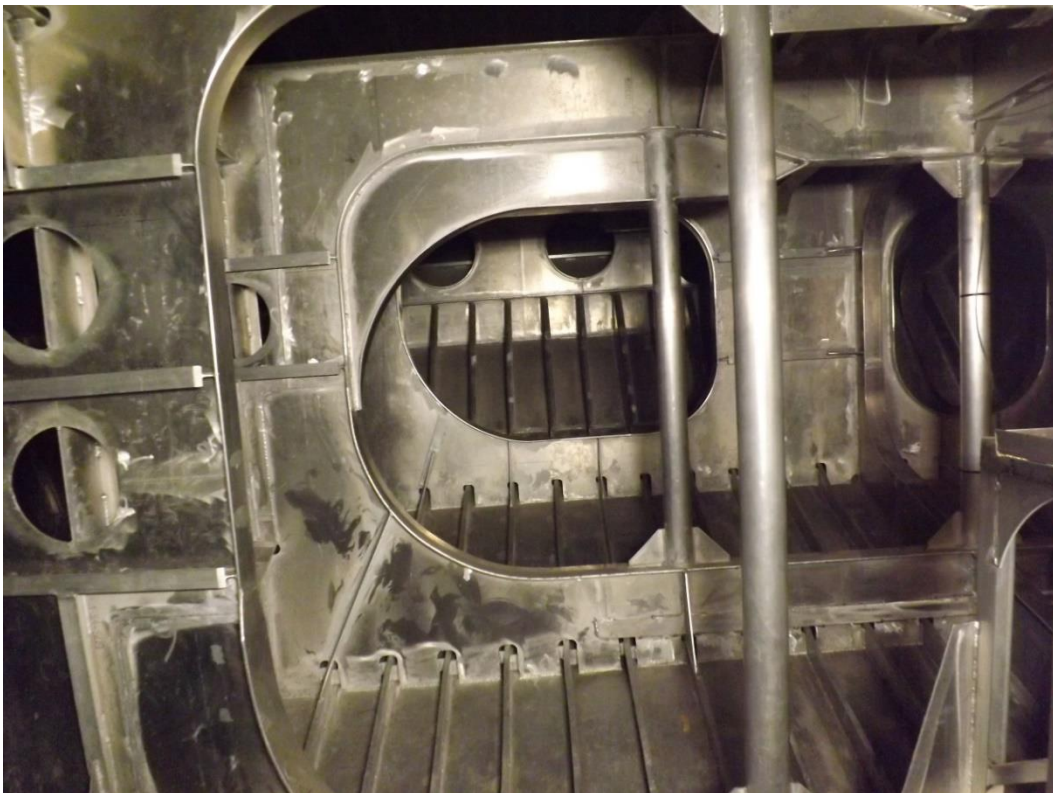


FVF Fairweather Unloading Vehicles – Picture taken May 2014

Attachment E – FVF Fairweather Pictures – Alaska DOT&PF – IFSB #2521S019



FVF Fairweather Bridge



FVF Fairweather Forepeak

Attachment E – FVF Fairweather Pictures – Alaska DOT&PF – IFSB #2521S019



FVF Fairweather Observation Lounge



FVF Fairweather Dining Area

Attachment E – FVF Fairweather Pictures – Alaska DOT&PF – IFSB #2521S019



FVF Fairweather PAX Service Office

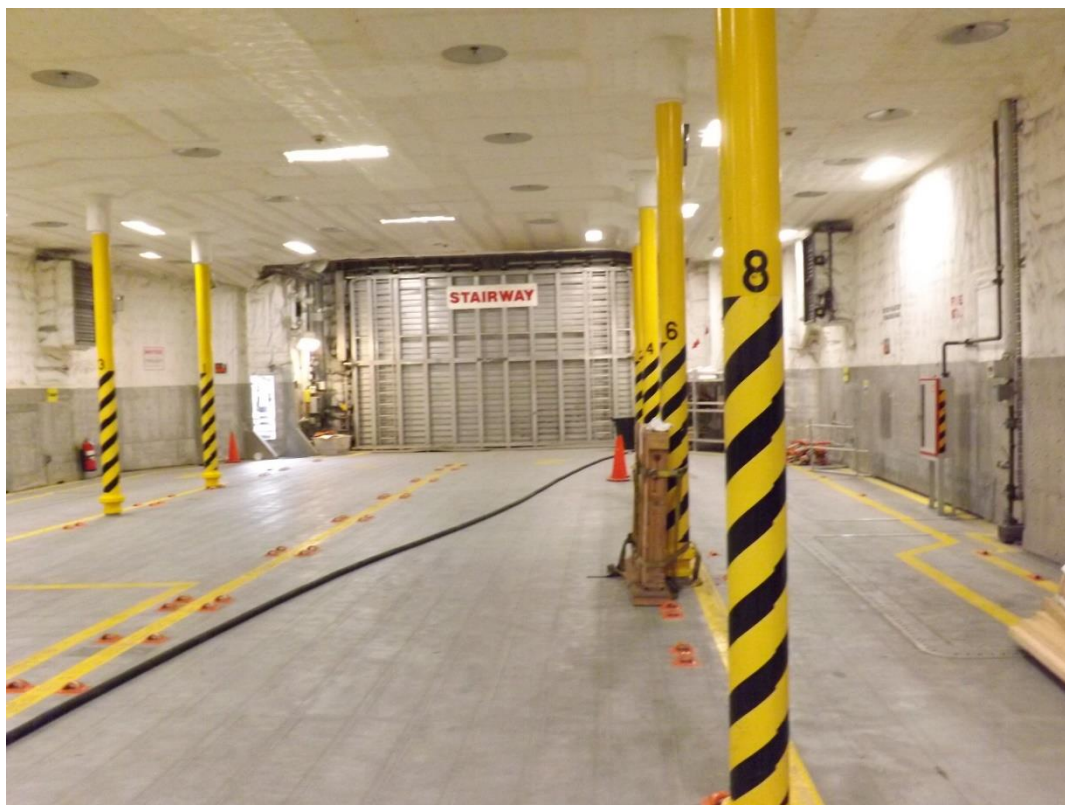


FVF Fairweather Solarium

Attachment E – FVF Fairweather Pictures – Alaska DOT&PF – IFSB #2521S019

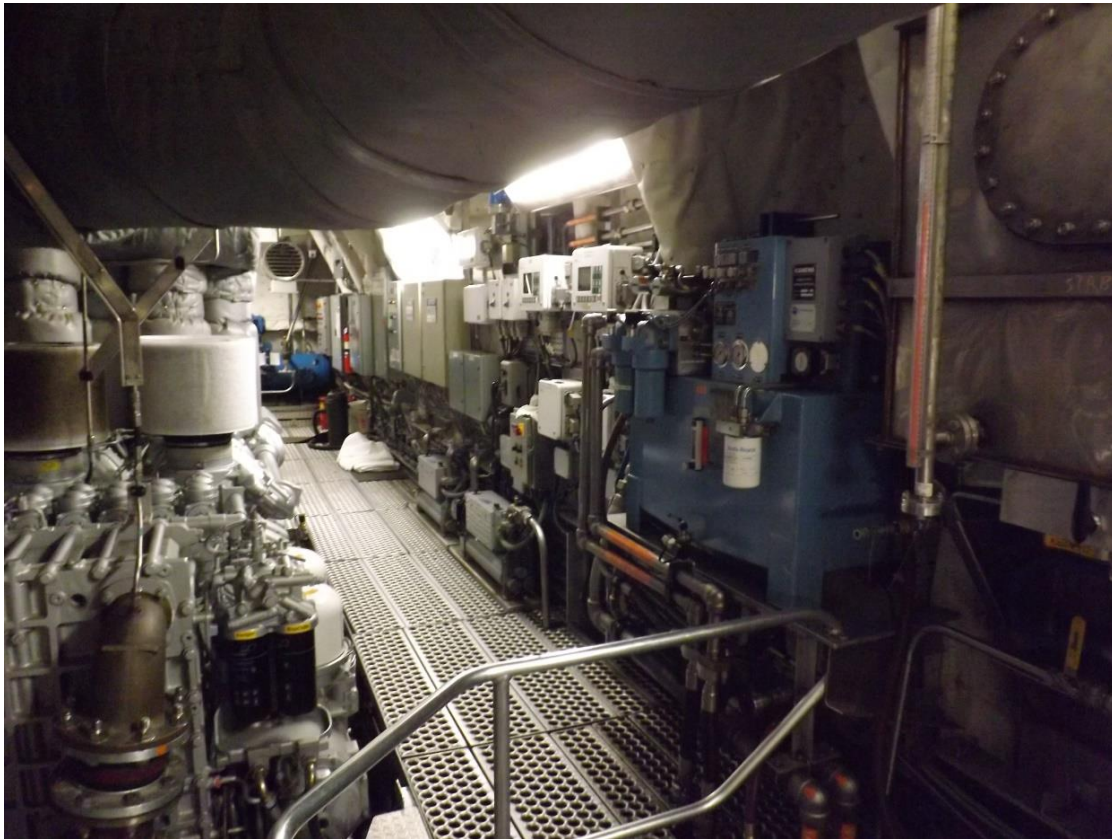


FVF Fairweather Vehicle Deck Looking FWD



FVF Fairweather Vehicle Deck Looking AFT

Attachment E – FVF Fairweather Pictures – Alaska DOT&PF – IFSB #2521S019



FVF Fairweather Starboard Engine Room with 20V 4000 MTU Engine (*U.S. EPA Tier 2 Certified*) & Kamewa Waterjet



FVF Fairweather Starboard Switchboard Room Panels