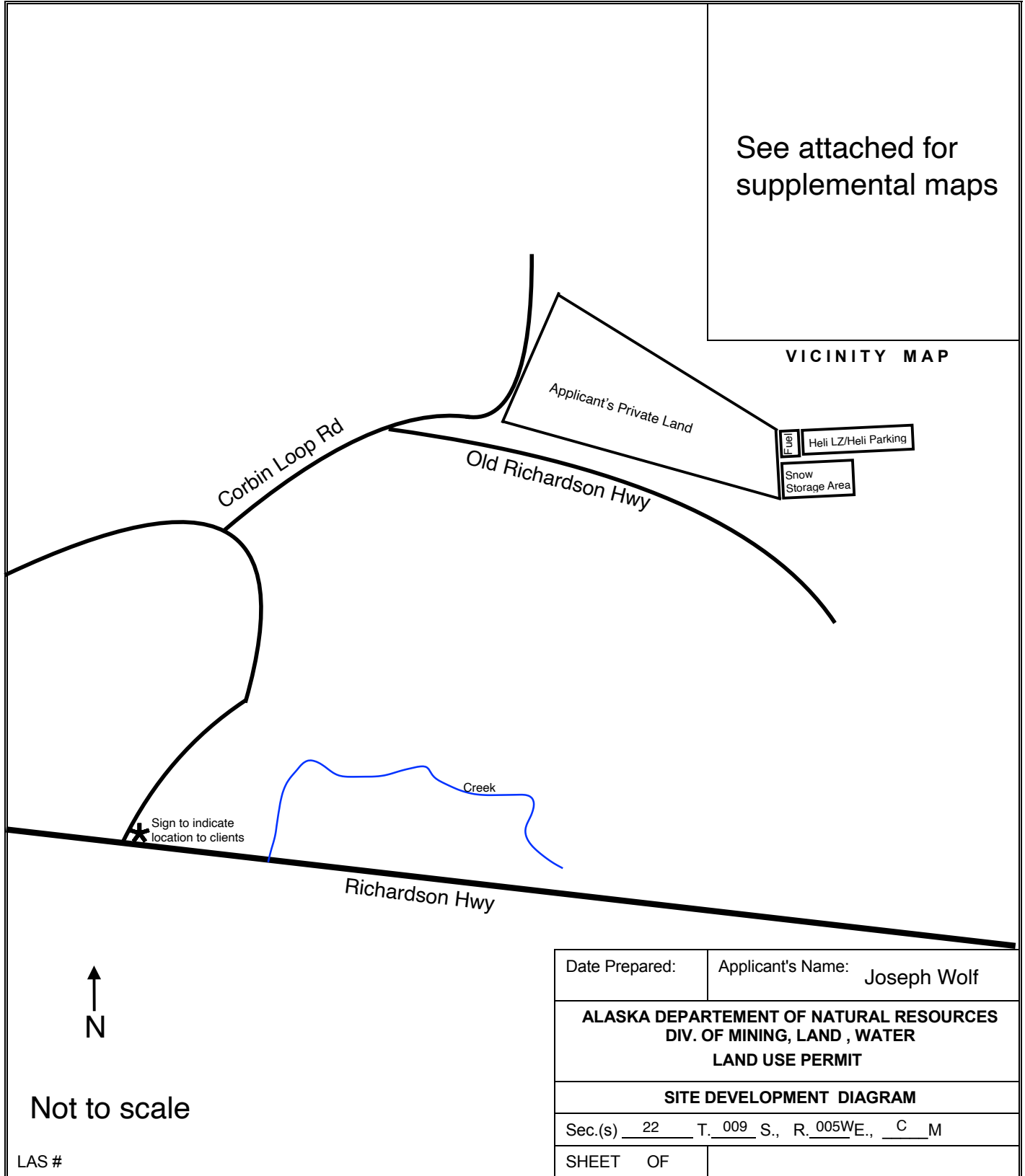


# Site Development Diagram





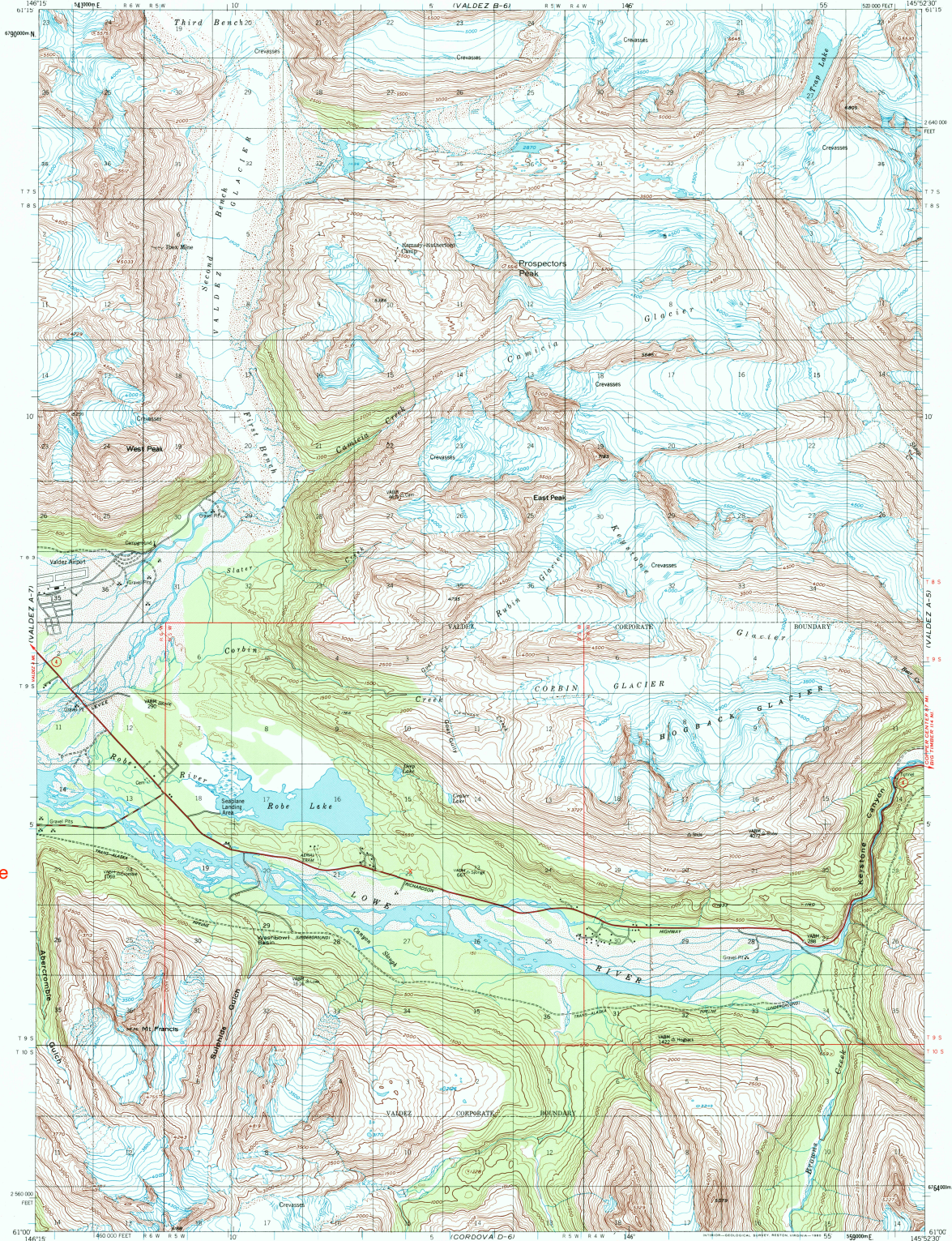
VALDEZ B-7



U.S. DEPARTMENT OF THE INTERIOR  
U.S. GEOLOGICAL SURVEY

VALDEZ (A-6) QUADRANGLE  
ALASKA  
1:63 300 SERIES (TOPOGRAPHIC)

VALDEZ B-5



X = Proposed Site

CORDOVA D-7

Mapped, edited, and published by the Geological Survey  
Control by USGS and USGACGS  
Topography by photogrammetric methods from aerial photographs taken 1950. Culture revised in part from 1:25,000 scale maps compiled in 1979 and 1980  
Universal Transverse Mercator projection. 1927 North American Datum  
10,000-foot grid ticks based on Alaska coordinate system; zone 3  
1000-meter Universal Transverse Mercator grid ticks, zone 6, shown in blue  
Gray land lines represent unsurveyed and unmarked locations predetermined by the Bureau of Land Management  
Foot C.W.S., Copper River Meridian  
Swamps, as portrayed, indicate only the wetter areas, usually of low relief, as interpreted from aerial photographs  
To place on the predicted North American Datum 1983 move the projection lines 60 meters north and 111 meters east



SCALE 1:63,300  
CONTOUR INTERVAL 100 FEET  
DASHED LINES REPRESENT 50 FOOT CONTOURS  
NATIONAL GEODETIC VERTICAL DATUM OF 1929  
FOR SALE BY U.S. GEOLOGICAL SURVEY, P.O. BOX 25286, DENVER, COLORADO 80225  
A FOLDER DESCRIBING TOPOGRAPHIC MAPS AND SYMBOLS IS AVAILABLE ON REQUEST



ROAD CLASSIFICATION  
Heavy-duty ——— Light-duty ———  
Medium-duty ——— Unimproved dirt ———  
State Route

VALDEZ (A-6), ALASKA  
N6100-W14525/15422 5  
1951  
LIMITED REVISIONS 1980

RECEIVED  
SEP 30 2001

HISTORICALMAPARCHIVES

