

**LEGEND:**

- ⊗ B.L.M. OR G.L.O. MONUMENT RECOVERED THIS SURVEY
- ⊕ PRIMARY MONUMENT SET BY U.S.F.S. AND RECOVERED THIS SURVEY
- SECONDARY MONUMENT SET BY A.L.S. DURING PREVIOUS SURVEY AND RECOVERED THIS SURVEY

**TIDAL DATA:**

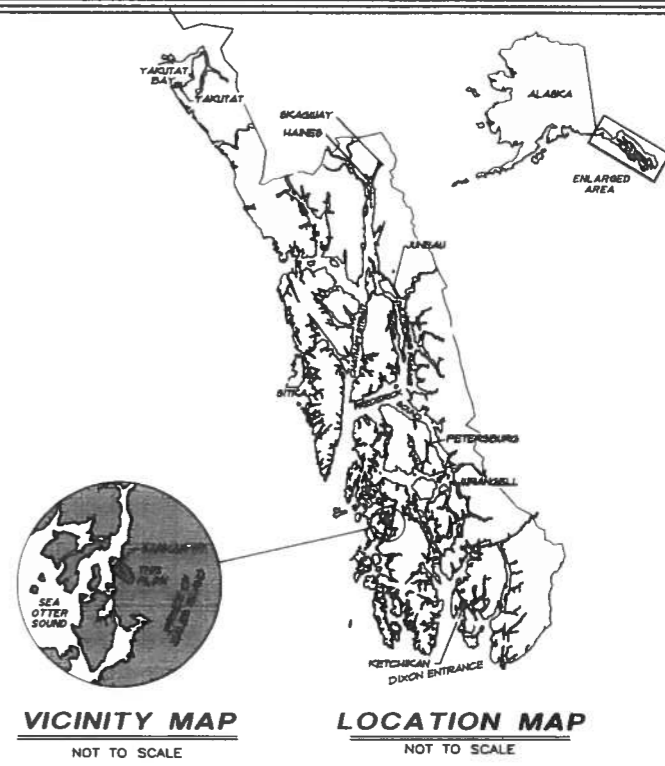
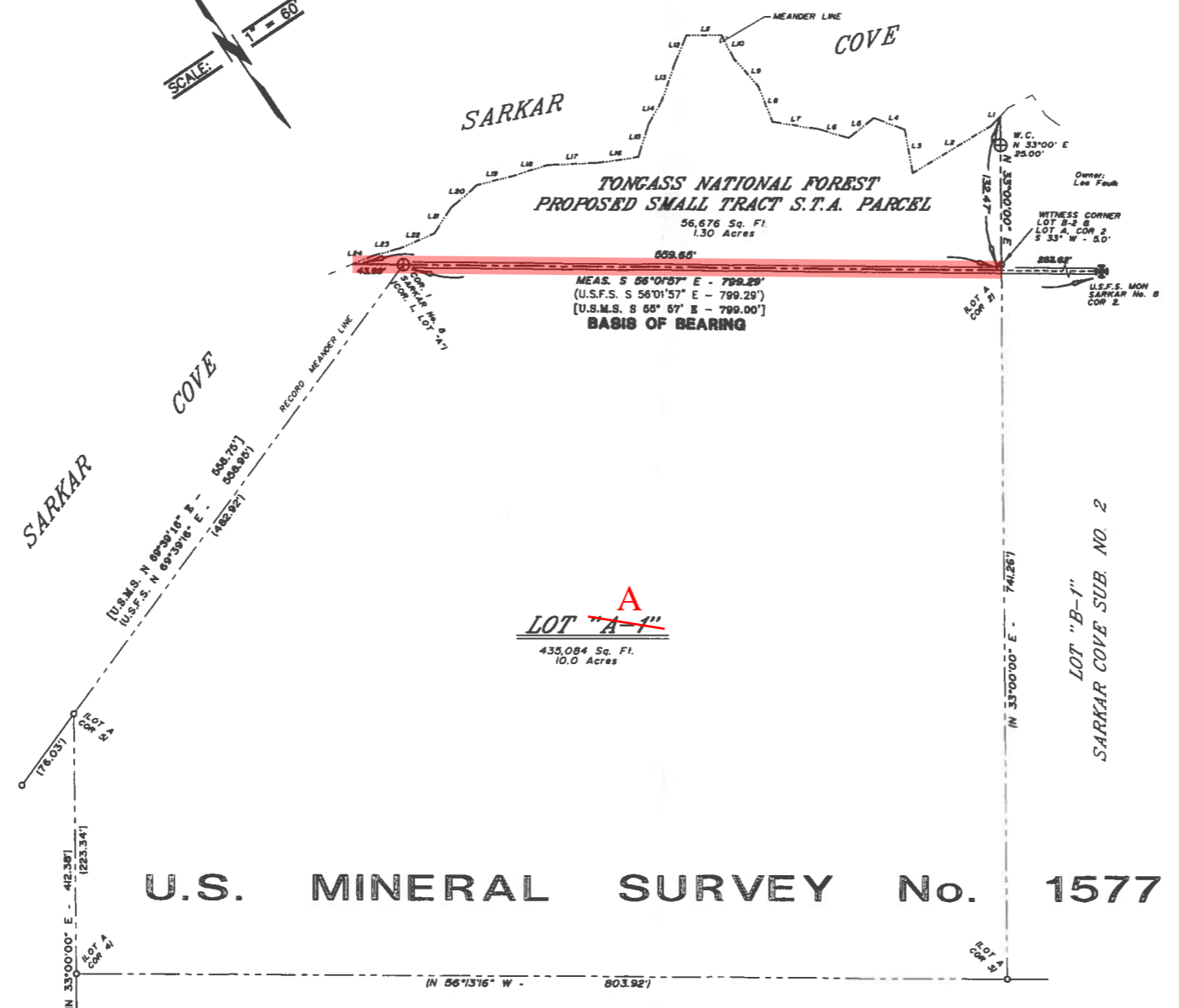
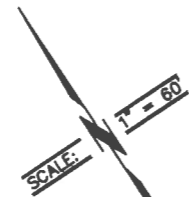
THE MEANDER LINE WAS ESTABLISHED FROM TIDAL OBSERVATIONS. THE ELEVATION FOR MEAN HIGH WATER WAS TAKEN FROM U.S. COAST AND GEODETIC SURVEY PUBLISHED INFORMATION.

MEAN LOWER WATER AT DEWEYVILLE, SARKAR COVE, EL CAPITAN IS BASED ON 50 HIGH WATERS AND 50 LOW WATERS, AUGUST 22-17, 1923, REDUCED TO MEAN VALUES. ELEVATIONS OF OTHER TIDES REFERRED TO THIS DATUM ARE AS FOLLOWS:

DESCRIPTION	FEET
HIGHEST TIDE (estimated)	15.0
MEAN HIGHER HIGH WATER	11.10
MEAN HIGH WATER	10.30
HALF TIDE LEVEL	5.85
MEAN LOW WATER	1.40
MEAN LOWER LOW WATER	0.00
LOWEST TIDE (estimated)	-4.0

**LINE TABLE:**

LINE	DIRECTION	DISTANCE
L1	N 33°00'00" E	741.851'
L2	S 56°01'57" E	799.29'
L3	S 56°01'57" E	799.29'
L4	S 56°01'57" E	799.29'
L5	S 56°01'57" E	799.29'
L6	S 56°01'57" E	799.29'
L7	S 56°01'57" E	799.29'
L8	S 56°01'57" E	799.29'
L9	S 56°01'57" E	799.29'
L10	S 56°01'57" E	799.29'
L11	S 56°01'57" E	799.29'
L12	S 56°01'57" E	799.29'
L13	S 56°01'57" E	799.29'
L14	S 56°01'57" E	799.29'
L15	S 56°01'57" E	799.29'
L16	S 56°01'57" E	799.29'
L17	S 56°01'57" E	799.29'
L18	S 56°01'57" E	799.29'
L19	S 56°01'57" E	799.29'
L20	S 56°01'57" E	799.29'
L21	S 56°01'57" E	799.29'
L22	S 56°01'57" E	799.29'
L23	S 56°01'57" E	799.29'
L24	S 56°01'57" E	799.29'
L25	S 56°01'57" E	799.29'
L26	S 56°01'57" E	799.29'
L27	S 56°01'57" E	799.29'
L28	S 56°01'57" E	799.29'
L29	S 56°01'57" E	799.29'
L30	S 56°01'57" E	799.29'
L31	S 56°01'57" E	799.29'
L32	S 56°01'57" E	799.29'
L33	S 56°01'57" E	799.29'
L34	S 56°01'57" E	799.29'
L35	S 56°01'57" E	799.29'
L36	S 56°01'57" E	799.29'
L37	S 56°01'57" E	799.29'
L38	S 56°01'57" E	799.29'
L39	S 56°01'57" E	799.29'
L40	S 56°01'57" E	799.29'
L41	S 56°01'57" E	799.29'
L42	S 56°01'57" E	799.29'
L43	S 56°01'57" E	799.29'
L44	S 56°01'57" E	799.29'
L45	S 56°01'57" E	799.29'
L46	S 56°01'57" E	799.29'
L47	S 56°01'57" E	799.29'
L48	S 56°01'57" E	799.29'
L49	S 56°01'57" E	799.29'
L50	S 56°01'57" E	799.29'
L51	S 56°01'57" E	799.29'
L52	S 56°01'57" E	799.29'
L53	S 56°01'57" E	799.29'
L54	S 56°01'57" E	799.29'
L55	S 56°01'57" E	799.29'
L56	S 56°01'57" E	799.29'
L57	S 56°01'57" E	799.29'
L58	S 56°01'57" E	799.29'
L59	S 56°01'57" E	799.29'
L60	S 56°01'57" E	799.29'
L61	S 56°01'57" E	799.29'
L62	S 56°01'57" E	799.29'
L63	S 56°01'57" E	799.29'
L64	S 56°01'57" E	799.29'
L65	S 56°01'57" E	799.29'
L66	S 56°01'57" E	799.29'
L67	S 56°01'57" E	799.29'
L68	S 56°01'57" E	799.29'
L69	S 56°01'57" E	799.29'
L70	S 56°01'57" E	799.29'
L71	S 56°01'57" E	799.29'
L72	S 56°01'57" E	799.29'
L73	S 56°01'57" E	799.29'
L74	S 56°01'57" E	799.29'
L75	S 56°01'57" E	799.29'
L76	S 56°01'57" E	799.29'
L77	S 56°01'57" E	799.29'
L78	S 56°01'57" E	799.29'
L79	S 56°01'57" E	799.29'
L80	S 56°01'57" E	799.29'
L81	S 56°01'57" E	799.29'
L82	S 56°01'57" E	799.29'
L83	S 56°01'57" E	799.29'
L84	S 56°01'57" E	799.29'
L85	S 56°01'57" E	799.29'
L86	S 56°01'57" E	799.29'
L87	S 56°01'57" E	799.29'
L88	S 56°01'57" E	799.29'
L89	S 56°01'57" E	799.29'
L90	S 56°01'57" E	799.29'
L91	S 56°01'57" E	799.29'
L92	S 56°01'57" E	799.29'
L93	S 56°01'57" E	799.29'
L94	S 56°01'57" E	799.29'
L95	S 56°01'57" E	799.29'
L96	S 56°01'57" E	799.29'
L97	S 56°01'57" E	799.29'
L98	S 56°01'57" E	799.29'
L99	S 56°01'57" E	799.29'
L100	S 56°01'57" E	799.29'



**PLAT NOTES:**

1. THIS IS A RECORD OF SURVEY PLAT OF U.S. FOREST SERVICE LAND LYING BETWEEN SARKAR COVE AND THE NORTHEAST PROPERTY LINE OF LOT "A", SARKAR COVE SUBDIVISION
2. ALL ORIGINAL U.S. MINERAL SURVEY BEARINGS AND/OR DISTANCES ARE WRITTEN IN ITALIC LETTERS, BEING PRECEDED BY "U.S.F.S." WITH BOTH DESCRIPTIONS, AND BEARINGS, AND/OR DISTANCES SHOWN ENCLOSED BY (BRACKETS).  
THE BEARINGS AND/OR DISTANCES AS TAKEN FROM THE RETRACEMENT SURVEY PLAT CONTRACTED BY THE U.S. FOREST SERVICE ARE WRITTEN IN VERTICAL LETTERS, PRECEDED BY "U.S.F.S."; AND SHOWN ENCLOSED BY (PARENTHESES).  
ALL BEARINGS AND/OR DISTANCES DERIVED FROM FIELD MEASUREMENTS AND/OR OFFICE CALCULATIONS DURING THIS SURVEY ARE SHOWN IN SLANTED LETTERS WITHOUT PARENTHESES.
3. THE BASIS OF BEARING IS TAKEN FROM U.S.F.S. RETRACEMENT PLAT AND IS SHOWN ON THE DRAWING.
4. ALL PLAT BEARINGS SHOWN ARE TRUE BEARINGS AS ORIENTATED TO THE BASIS OF BEARING.
5. ALL DISTANCES SHOWN ARE SHOWN ARE REDUCED TO HORIZONTAL FIELD DISTANCES.

**OWNER'S ADDRESS:**

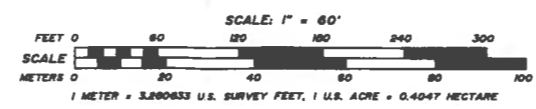
U.S.D.A. FOREST SERVICE  
TONGASS NATIONAL FOREST - KETCHIKAN AREA  
FEDERAL BUILDING  
KETCHIKAN, AK 99901

**SURVEYOR'S CERTIFICATE**

I HEREBY CERTIFY THAT I AM PROPERLY REGISTERED AND LICENSED TO PRACTICE LAND SURVEYING IN THE STATE OF ALASKA, AND THAT THIS PLAT REPRESENTS THE SURVEY MADE BY ME OR UNDER MY DIRECT SUPERVISION, AND THAT THE MONUMENTS SHOWN THEREON ACTUALLY EXIST AS DESCRIBED, AND THAT ALL DIMENSIONS AND OTHER DETAILS ARE CORRECT.



07 Aug. 2000  
DATE



2000-40  
Ketchikan REC DIST 20  
DATE August 14, 2000  
TIME 10:31 A.M.  
Recorded By USGA  
Address FOREST SERVICE



PREPARED BY: ALASKA LAND SURVEYING CO. - JUNEAU, ALASKA - (907) 789-0000, FAX: (907) 789-4224  
C:\ALS-PRD\FILES\331-NEHR\VP955801\dwg\SAR-LDTA.DWG 08/07/2000 19:29:33 PM ADT