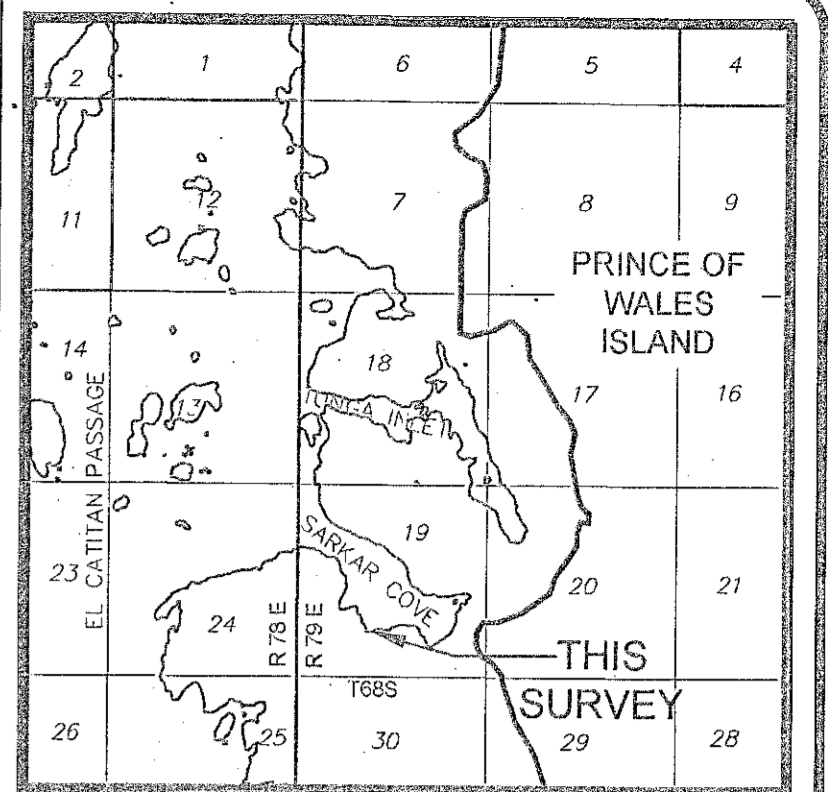
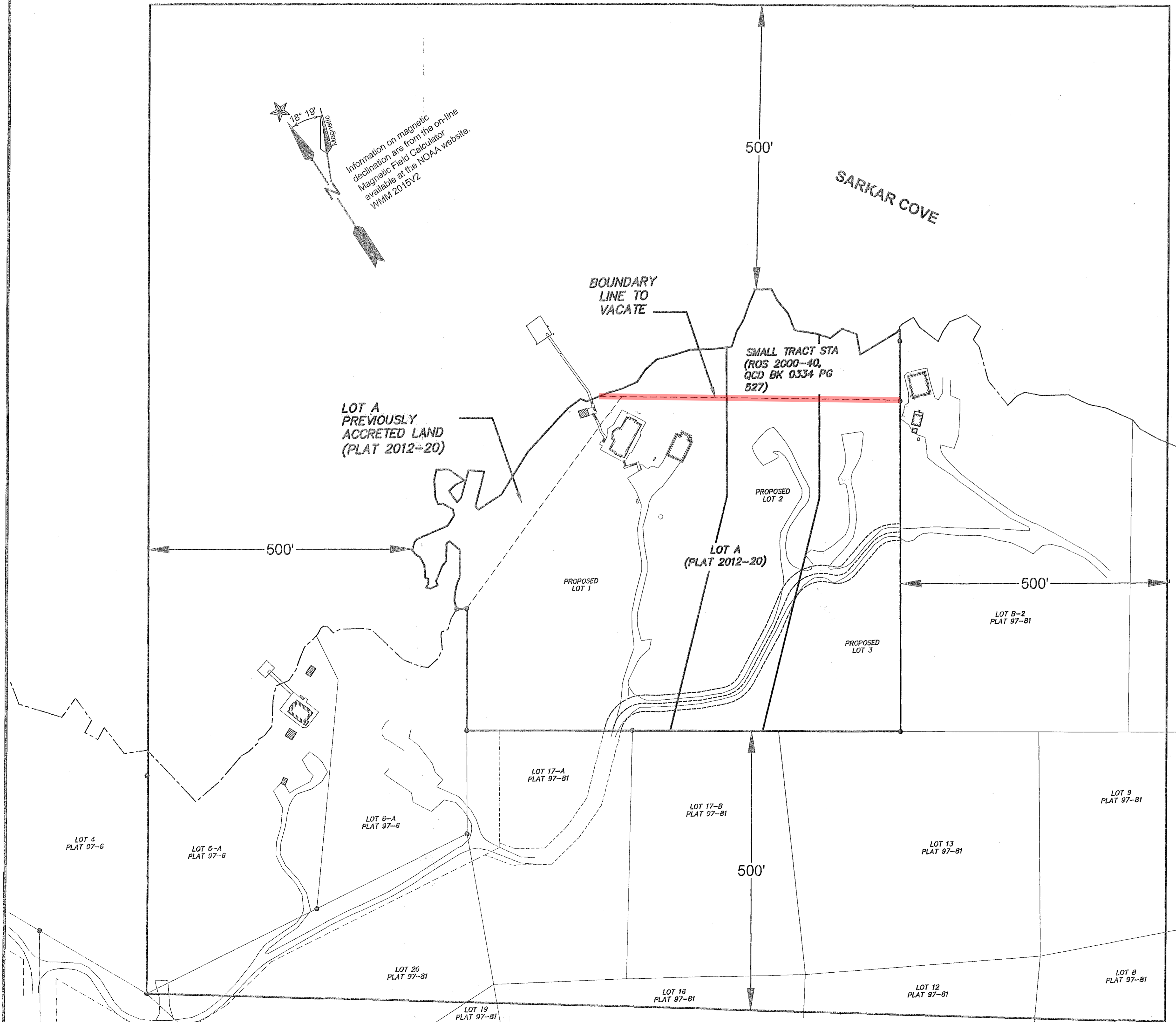


EL CAPITAN ISLAND (WEST SIDE)		N55°56' W133°20'
MHHW		10.8'
MHW		10.0'
MLW		1.3'
MLLW		0.00'



Vicinity Map
SOURCE: U.S.G.S. QUADRANGLE CRAIG (D-4), ALASKA 1949 REVISED 1993
1"=1 MILE

Information on magnetic declination are from the on-line Magnetic Field Calculator available at the NOAA website. WMM 2015V2

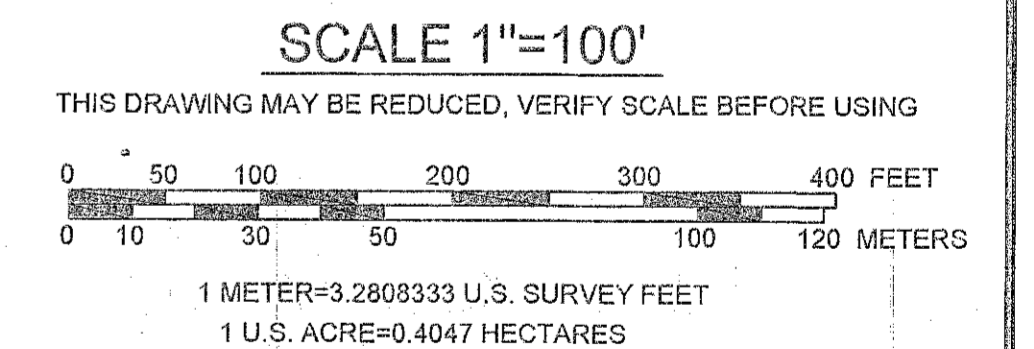
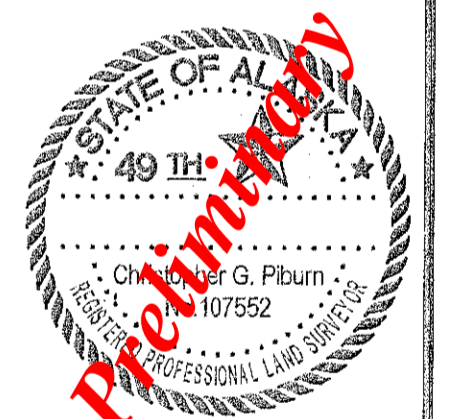


NOTES:

EV-3-327 LEGEND

— Record Lot Line To Be Eliminated

SURVEYOR'S CERTIFICATE
I HEREBY CERTIFY THAT I AM PROPERLY REGISTERED AND LICENSED TO PRACTICE LAND SURVEYING IN THE STATE OF ALASKA, THAT THIS PLAT REPRESENTS A SURVEY MADE BY ME OR UNDER MY DIRECT SUPERVISION, THAT THE MONUMENTS SHOWN HEREON ACTUALLY EXIST AS DESCRIBED, AND THAT ALL DIMENSIONS AND OTHER DETAILS ARE CORRECT.
REGISTRATION NO. 107552 DATE: 2/22/2019
PRELIMINARY
REGISTERED LAND SURVEYOR



DATE OF SURVEY: BEGINNING: JUNE 29, 2019 ENDING: OCT. 10, 2019	NAME OF SURVEYOR: R&M ENGINEERING-KETCHIKAN 7180 REVILLA ROAD, SUITE 300 KETCHIKAN, AK 99801 (907) 225-7917 COA # C576
VALHALLA SUBDIVISION A REPLAT OF ASLS 2006-59, LOT "A" SARKAR SUBDIVISION NO. 2 (PLAT 2012-20 & 91-76), SMALL TRACT S.T.A. PARCEL (PLAT 2000-40), K.R.D	
LOCATED WITHIN PROTRACTED SECTION 19 TOWNSHIP 68 SOUTH, RANGE 79 EAST, COPPER RIVER MERIDIAN, ALASKA CONTAINING 12.30 ACRES KETCHIKAN RECORDING DISTRICT	
DRAWING BY: MJH	By: _____
DATE:	
SCALE: 1"=60'	CHECKED BY: CGP
	FILE NO.

