

Copyright:© 2013 National Geographic Society, Inc.



Legend

- Alaska DOT&PF Bridges
- Copper River Delta CHA
- PEL Study Area

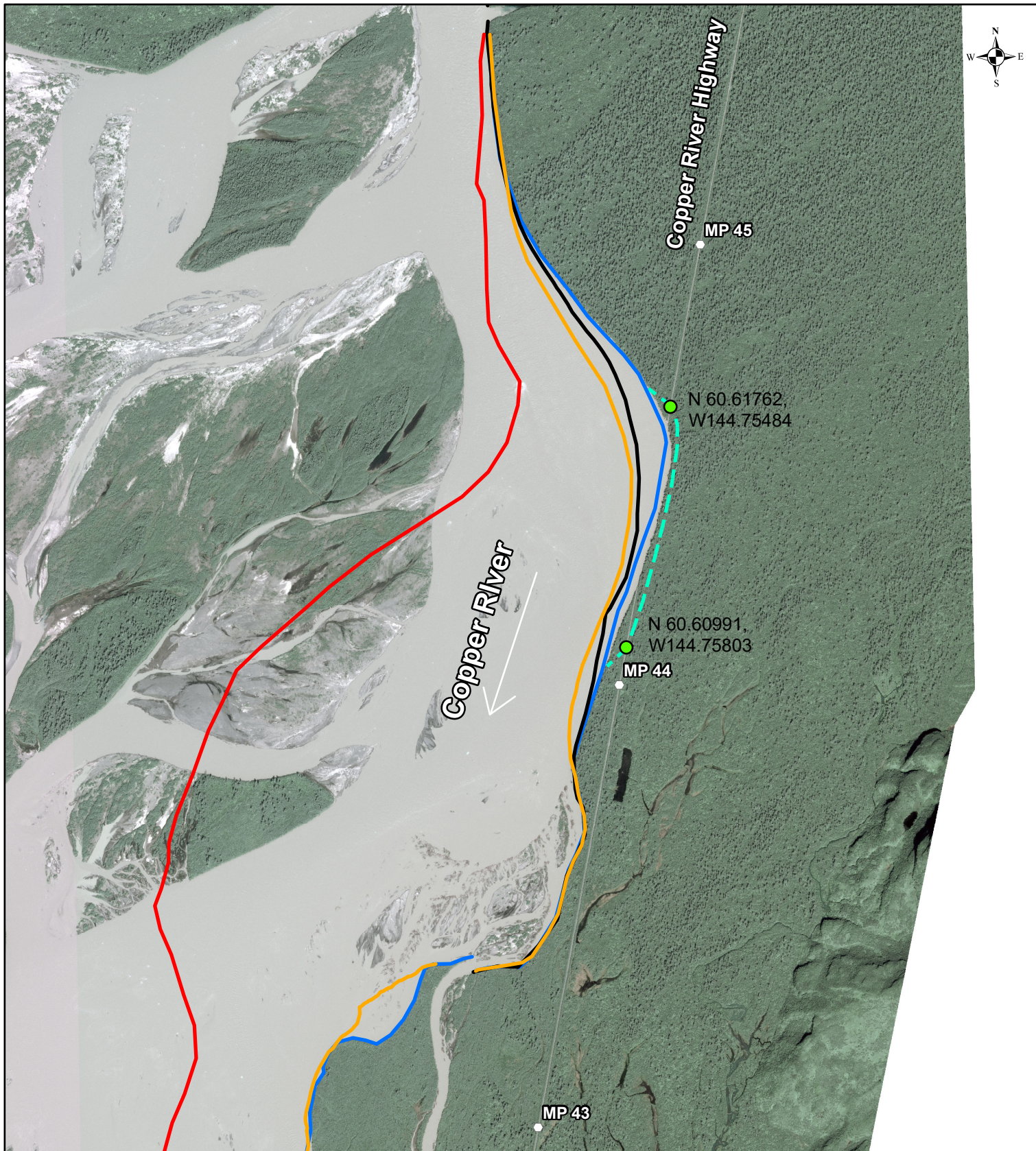
STATE OF ALASKA
Department of Transportation and Public Facilities
2301 Peger Road Fairbanks, AK 99709

Copper River Highway PEL Study Area

DATE: November 2019

FIGURE 1

0 1.25 2.5 5 Miles



**NOTE: Imagery
acquired
June 29, 2019**

0 500 1,000 2,000 Feet

Legend

- July 1982 River Edge
- July 21, 2011 River Edge
- September 30, 2016 River Edge
- September 30, 2018 River Edge
- - - September 4, 2019 River Edge

STATE OF ALASKA
Department of Transportation and Public Facilities
2301 Peger Road Fairbanks, AK 99709

**Chronology of Channel Migration
Near MP 43-MP 45**

DATE: December 2019

FIGURE 2



0 0.5 1 Miles

Legend

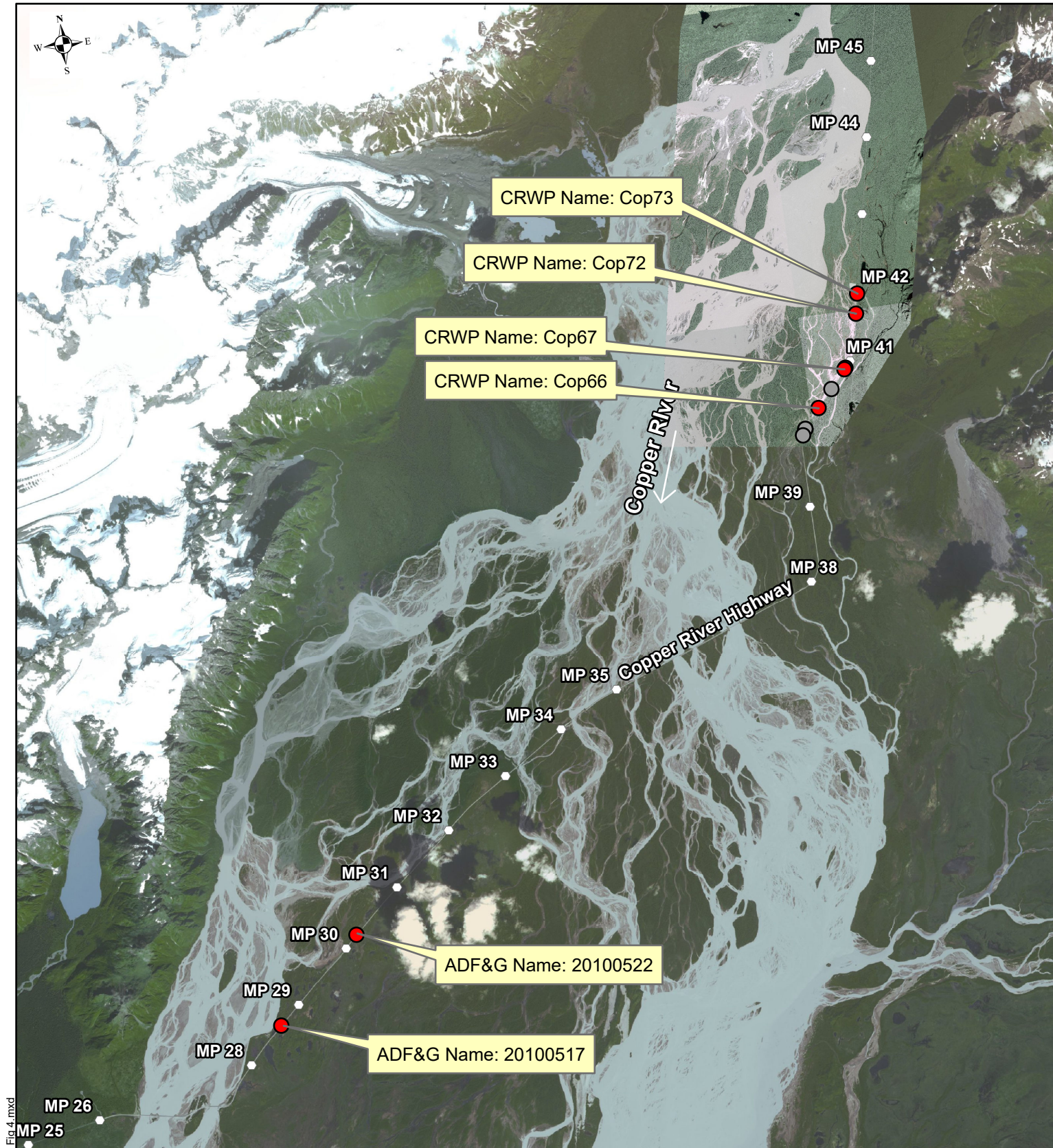
- Alt 1 - Reestablish ROW
- Alt 2 - Realign Road
- Alt 3 - Realign Road
- Alt 4 - Raise Grade of Road and Realign

STATE OF ALASKA
Department of Transportation and Public Facilities
2301 Peger Road Fairbanks, AK 99709

Preliminary Alternatives

DATE: November 2019

FIGURE 3



Document Path: C:\Users\maybrien\Desktop\CRH_Fig 4.mxd



0 1 2 Miles

Legend

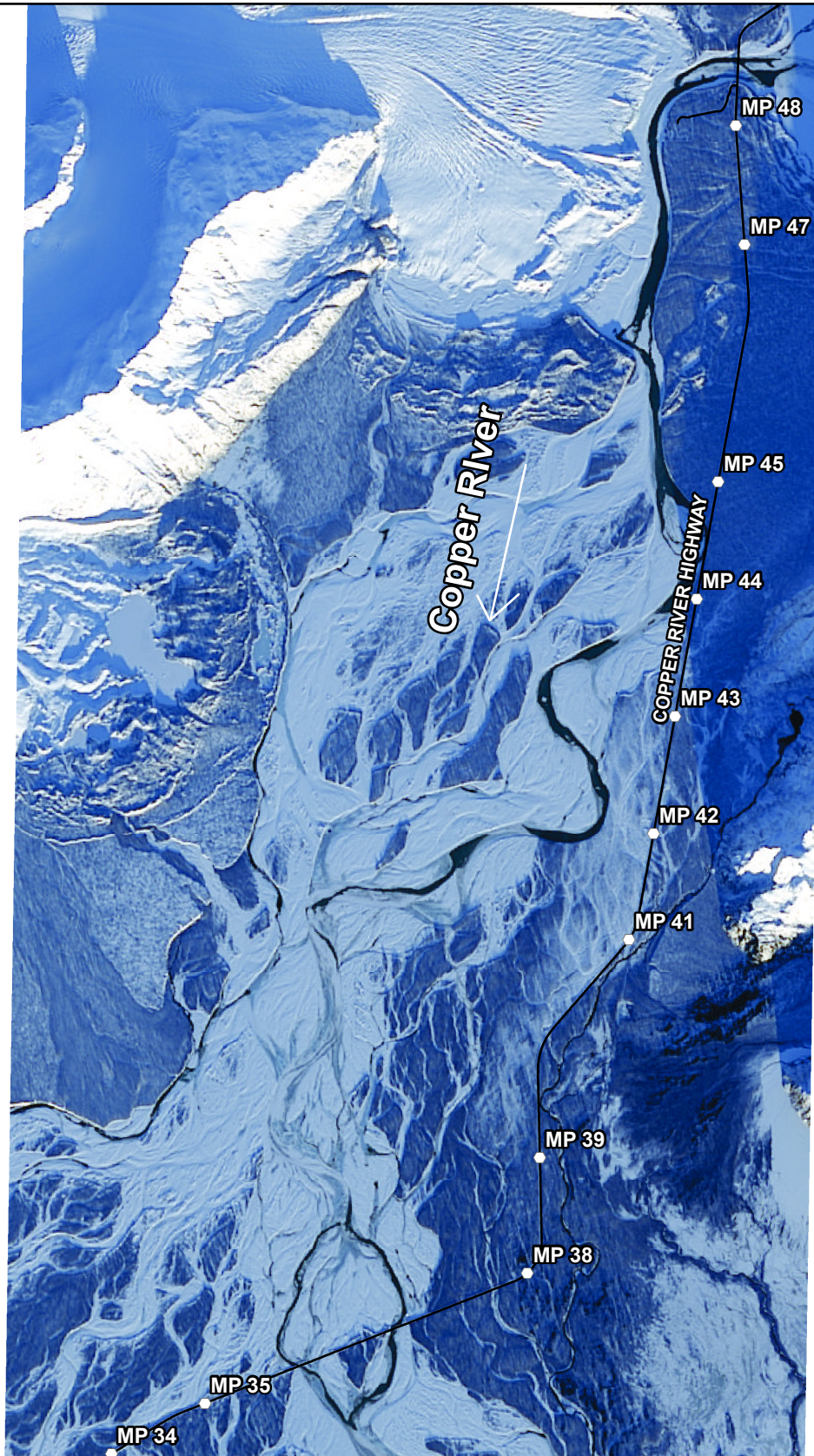
- Critical Culverts
- Culverts

STATE OF ALASKA
Department of Transportation and Public Facilities
2301 Peger Road Fairbanks, AK 99709

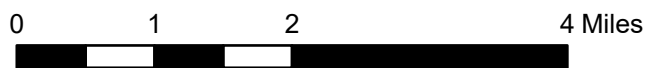
Fish Passage Culverts

DATE: December 2019

FIGURE 4



NOTE: Imagery acquired January 6, 2019

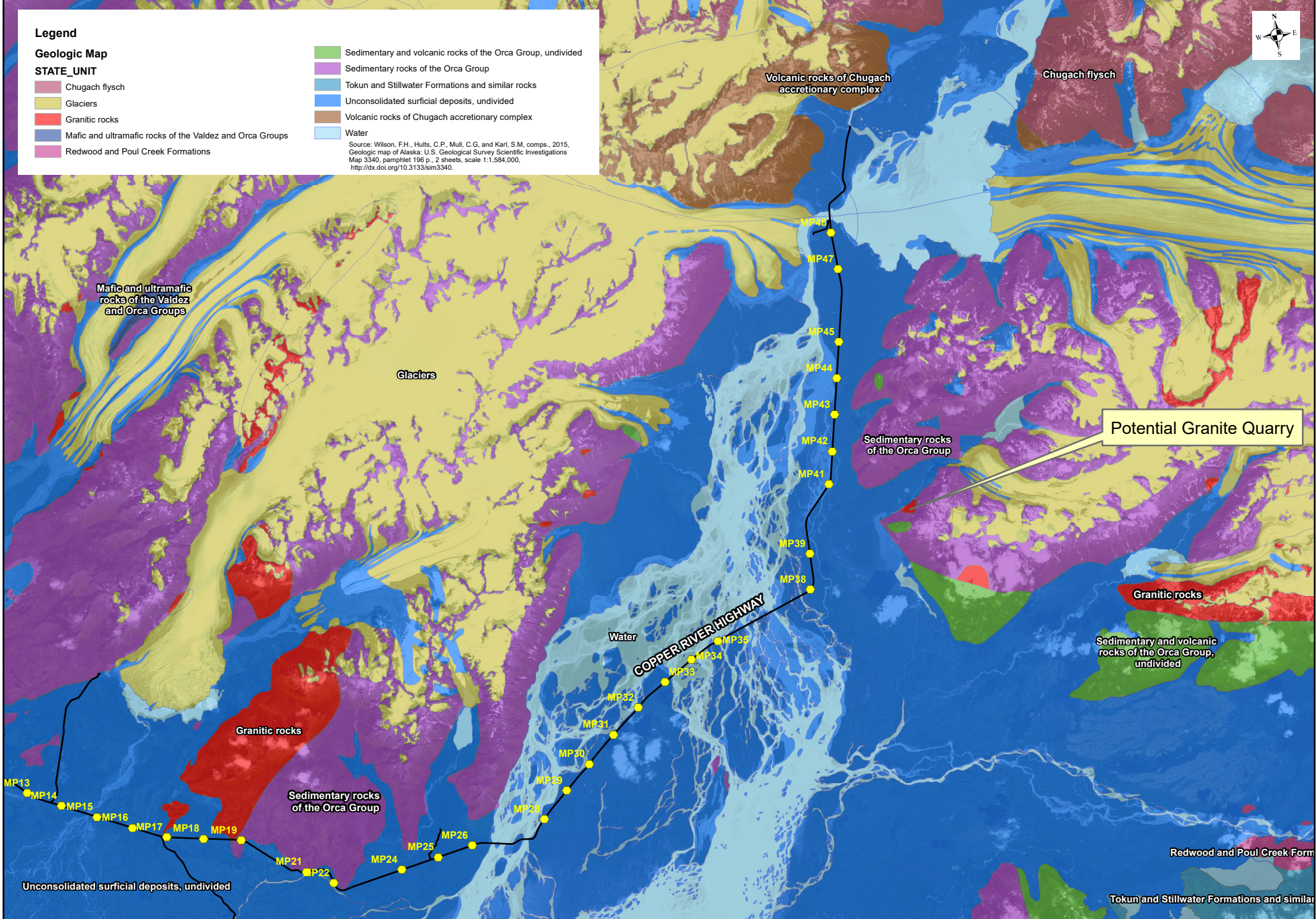


STATE OF ALASKA
Department of Transportation and Public Facilities
2301 Peger Road Fairbanks, AK 99709

**Open Water During
January 6, 2019**

DATE: December 2019

FIGURE 5



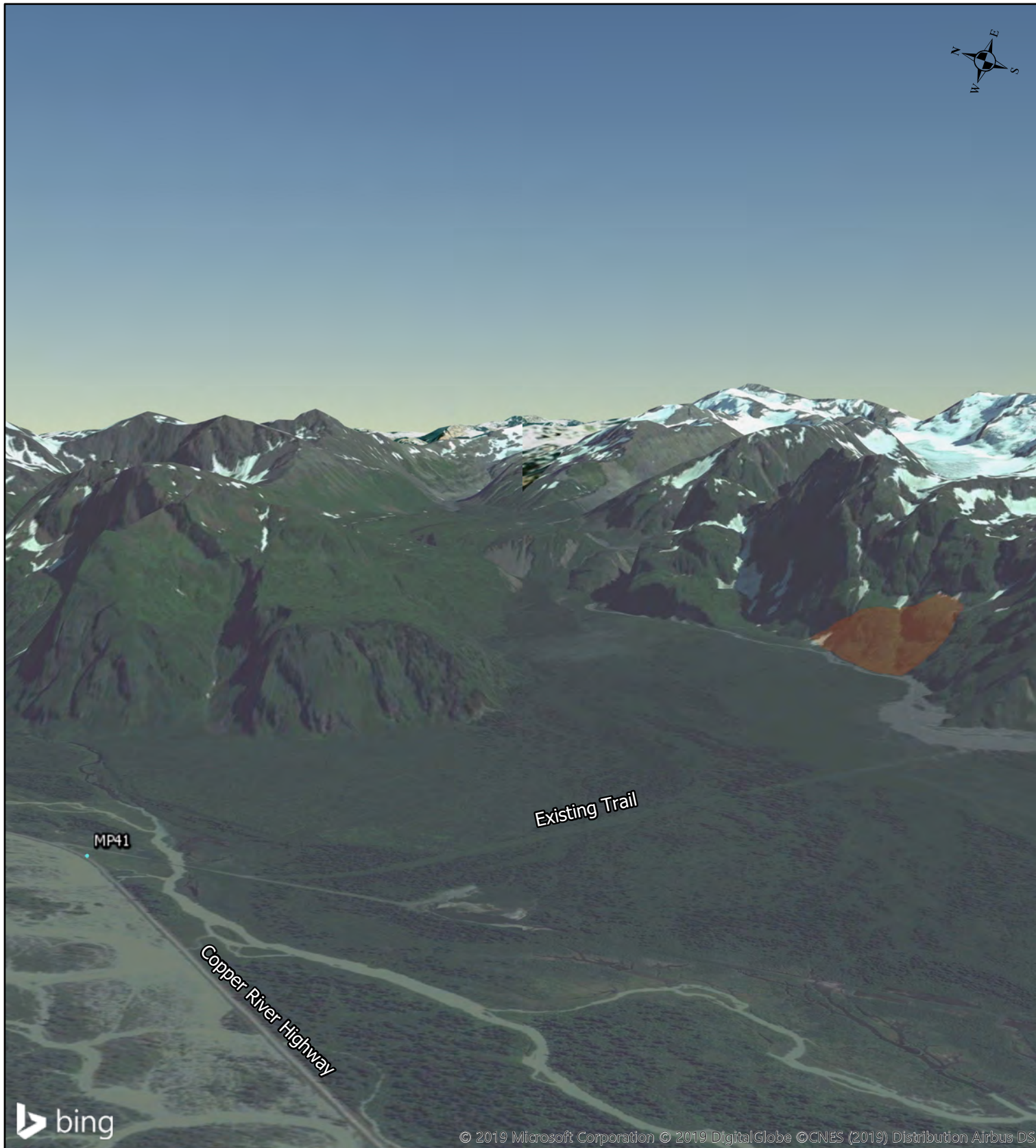
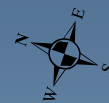
0 2.5 5 10 Miles

STATE OF ALASKA
Department of Transportation and Public Facilities
2301 Peger Road Fairbanks, AK 99709

December 2019

Figure 6

Geologic Map




0 125 250 500 Feet



STATE OF ALASKA
Department of Transportation and Public Facilities
2301 Peger Road Fairbanks, AK 99709

Legend

 Granite Outcrop

Potential Material Site

December 2019

Figure 7