

DESIGNED BY: E. STEVEN
CHECKED BY: E. STEVEN
DRAFTED BY: STEVEN

DATE: 7/12/2019
TIME: 10:34

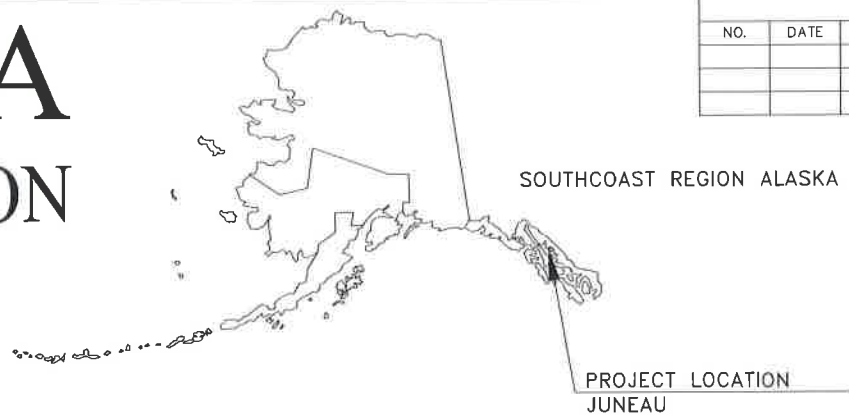
DRAWING LOCATION
Q:\Jnu\SFWY00240\TR_00240_A1_Tshet.dwg

STATE OF ALASKA

DEPARTMENT OF TRANSPORTATION AND PUBLIC FACILITIES

PROPOSED HIGHWAY PROJECT

JNU BACK LOOP-MENDENHALL LOOP RD. INTERSECTION SAFETY IMPROVEMENTS HSIP PROJECT No. SFHWY00240/0003242



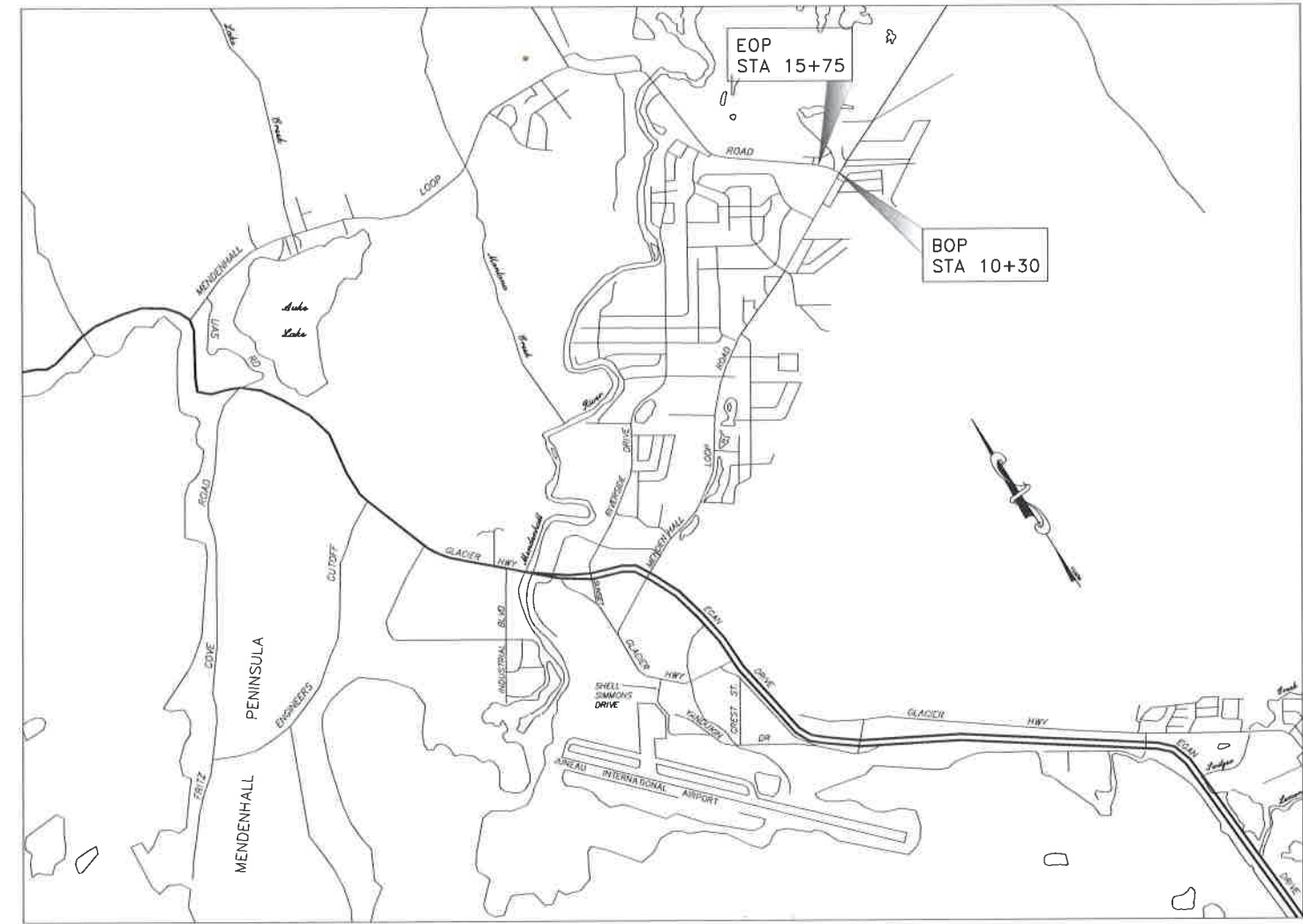
REVISIONS			STATE	PROJECT DESIGNATION	YEAR	SHEET NO.	TOTAL 'A' SHEETS
NO.	DATE	DESCRIPTION				A1	2
			ALASKA	SFWY00240/0003242	2019	PLAN SET TOTAL	8
			CDS ROUTE: 296401		MILEPOINT: 0.000 TO 0.109		
			LATITUDE: 58°23'52"N		LONGITUDE: 134°33'37"W		

As-Advertised:

September 3, 2019

INDEX OF SHEETS	
SHEET NO.	DESCRIPTION
A1	TITLE SHEET
A2	LEGEND
C1	ESTIMATE OF QUANTITIES
D1	SIGN AND FLASHING BEACON SUMMARIES
F1	PLAN VIEW
F2	WARNING BEACON DETAILS
P1	EROSION AND SEDIMENT CONTROL PLAN
T1	TRAFFIC CONTROL PLANS

DESIGN DESIGNATIONS	
ADT (2018)	4508



VICINITY MAP
N.T.S.

THE FOLLOWING STANDARD PLANS APPLY TO THIS PROJECT:

- S-05.01
- S-20.10
- S-31.01

USE THESE PLANS IN CONJUNCTION WITH THE STATE OF ALASKA STANDARD SPECIFICATIONS FOR HIGHWAY CONSTRUCTION, 2017 EDITION AND THE PROJECT SPECIAL PROVISIONS.

STATE OF ALASKA
DEPARTMENT OF TRANSPORTATION & PUBLIC FACILITIES
6860 GLACIER HIGHWAY, JUNEAU, AK 99801
(907) 465-1763

APPROVED:

L. PAT CARROLL, P.E.
REGIONAL PRECONSTRUCTION ENGINEER
DATE: 8/14/19

CONCUR:

D. LANCE MEARIG, P.E.
DIRECTOR, SOUTHCOAST REGION
DATE: 14 Aug 2019

FILE: Q:\pva\SFHWY00240\TR\00240_A2.dwg DATE: 7/12/2019 10:29 LAYOUT: A3 DESIGNED: D.E. CHECKED: D.E. DRAFTED: D.S.

		NO.	DATE	REVISION	STATE	PROJECT DESIGNATION	YEAR	SHEET NO.	TOTAL SHEETS
					ALASKA	SFHWY00240/0003242	2019	A2	8

		EXISTING	PROPOSED
ROADWAY/PAVEMENT EDGE			
FENCE			
CURB AND GUTTER			
DETECTABLE WARNINGS			
GUARDRAIL			
CULVERT PIPE			
SIGN			
MAILBOX			
TREE LINE			
FLOW CENTERLINE			
FLOW DIRECTION			
WETLANDS			
EXISTING BUILDINGS			
POST OR BOLLARD			
WELL OR MONITORING WELL			
SEPTIC PIPE			
FUEL TANK FILL PIPE/VENT			
TEST HOLE			
CONIFER TREE			
DECIDUOUS TREE			
THERMOSIPHON			
VEHICLE PLUG-IN			
DELINEATOR/GUIDE MARKER			
DITCH RECONDITIONING			

		EXISTING	PROPOSED
SIGN POST & NUMBER			
PRIVATE SIGN			
4" WHITE SOLID STRIPE			
4" YELLOW SOLID STRIPE			
4" YELLOW SKIP STRIPE			
2' CROSSWALK OR STOPBAR			

NO.

DATE

REVISION

STATE

PROJECT DESIGNATION

YEAR

SHEET NO.

TOTAL SHEETS

BLM MONUMENT

GLO MONUMENT

USC&GS MONUMENT

PRIMARY MONUMENT

CENTERLINE MONUMENT IN CASING

PRIMARY R.O.W. MONUMENT

BEARING OBJECT

MISCELLANEOUS MONUMENT

LINE OF SIGHT MONUMENT

CONCRETE R.O.W. MONUMENT

BENCHMARK

REBAR AND CAP

REBAR

IRON PIPE

PK NAIL

SPIKE

HUB AND TACK

CONSTRUCTION CENTERLINE

MICELLANEOUS CENTERLINE

STATION EQUATION

PROJECT RIGHT-OF-WAY LINE

EXISTING RIGHT-OF-WAY LINE

EXISTING PROPERTY LINE

CONTROLLED ACCESS LINE

EXISTING EASEMENT LINE

PROPOSED EASEMENT LINE

PROPOSED CUT SLOPE LIMIT

PROPOSED FILL SLOPE LIMIT

SECTION LINE

1/4 SECTION LINE

1/16 SECTION LINE

TOWNSHIP & RANGE LINE

MEANDER LINE

SANITARY SEWER (FLOW DIRECTION →)

FUEL LINE

GAS LINE

WATER LINE

METER, VALVE, FIRE HYDRANT

EXISTING STORM DRAIN (FLOW DIRECTION →)

PROPOSED STORM DRAIN

FIBER OPTIC LINE

DIRECT BURIAL TELEPHONE CABLE

DIRECT BURIAL ELECTRIC CABLE

ELECTRIC LINE (OVERHEAD)

POWER POLE LINE

JOINT USE POWER & TELEPHONE

TELEPHONE POLE LINE

POLE ANCHOR

STUB POLE (POWER OR TELEPHONE)

TELEPHONE DUCT

TELEPHONE PEDESTAL

BURIED CABLE MARKER

CATCH BASIN OR DROP INLET

MANHOLE

SANITARY SEWER CLEAN OUT

AREA DRAIN

PIPE CULVERT

GEOGRID

POROUS BACKFILL

PRE-LEVELING

ROADWAY REHABILITATION

PAVEMENT PLANING AND OVERLAY

APPROACH RESURFACING

TOPSOIL AND SEEDING

CLEARING

S-10

S-11

P-11

SD

P-10

MB

FO

H

G

M

B

S

P

SS

W

5+00

10+00

"L"48+97.23 POT BK=

"O"48+97.23 PC AHD

R/W

C/A

T. 2 N.

T. 1 N.

T. 2 E.

T. 1 E.

M1

M2

M3

STATE OF ALASKA

49TH

David Bruce Eppsen

CE-6855

REGISTERED PROFESSIONAL ENGINEER

8-13-19

STATE OF ALASKA DEPARTMENT OF TRANSPORTATION AND PUBLIC FACILITIES

6860 GLACIER HIGHWAY, JUNEAU, AK 99811

(907) 465-1763

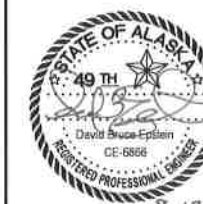
JNU BACK LOOP-MENDENHALL LOOP RD. INTERSECTION

SAFETY IMPROVEMENTS HSIP

LEGEND

NO.	DATE	REVISION	STATE	PROJECT DESIGNATION	YEAR	SHEET NO.	TOTAL SHEETS
			ALASKA	SFWY00240/0003242	2019	C1	8

ESTIMATE OF QUANTITIES

[illegible]

STATE OF ALASKA DEPARTMENT OF TRANSPORTATION
AND PUBLIC FACILITIES
6860 GLACIER HIGHWAY, JUNEAU, AK 99811
(907) 465-1763

JNU BACK LOOP-MENDENHALL
LOOP RD. INTERSECTION
SAFETY IMPROVEMENTS HSIP

ESTIMATE OF QUANTITIES

FILE Q:\jnu\SFH\00240\TR\00240_D1.dwg DATE 7/12/2019 10:25 LAYOUT MODEL DESIGNED D.E. CHECKED D.E. DRAFTED D.S.

NO.	DATE	REVISION	STATE	PROJECT DESIGNATION	YEAR	SHEET NO.	TOTAL SHEETS
			ALASKA	SFH\00240\0003242	2019	D1	8

615(1) STANDARD SIGN SUMMARY										
SIGN NUMBER	STATION	OFFSET	SIGN FACES	DESCRIPTION	ASDS CODE	WIDTH (IN)	HEIGHT (IN)	AREA (SF)	POST	REMARKS
1	10+30	LT	W	STOP	R1-1	36	36	9.00	SEE NOTE 1	
2	10+30	LT	E-W	MENDENHALL LOOP RD	D3-1	54	8	6.00	SEE NOTE 1	USE 4"/3" UC/LC C-FONT. TWO SIGNS MOUNTED BACK TO BACK ON OPPOSITE SIDES OF THE POST.
3	15+75	LT	W	STOP AHEAD (SYMBOL)	W3-1	30	30	6.25	SEE NOTE 1	
4	15+75	LT	W	STOP AHEAD	CUSTOM	24	18	3.00	SEE NOTE 1	USE 5" UC B-FONT. BLACK LEGEND ON YELLOW BACKGROUND

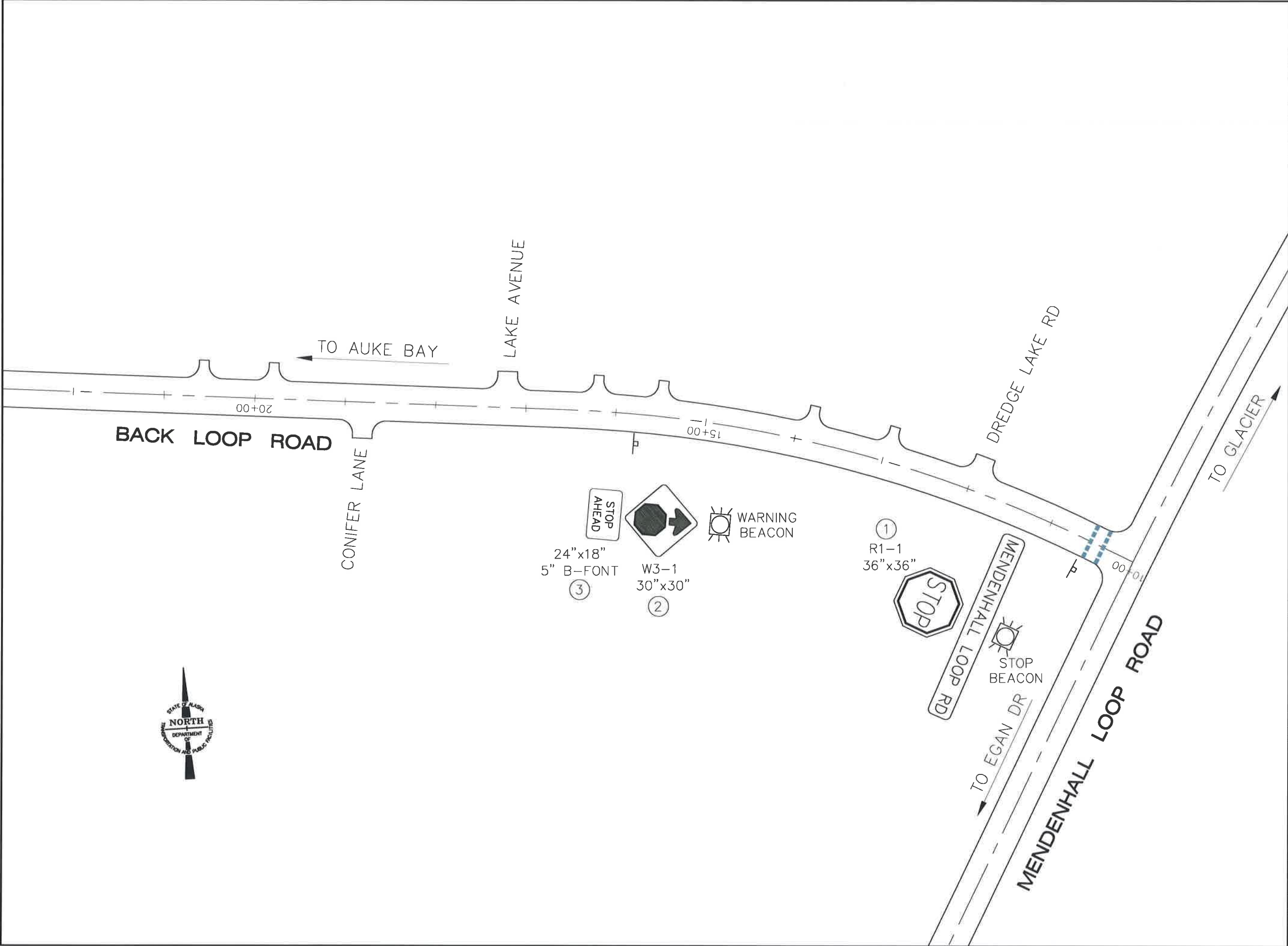
NOTES:

- 1. SIGNS SHALL BE MOUNTED ON VENDOR-SUPPLIED POSTS.
- 2. MOUNT SIGN NO. 3 BELOW SIGN NO. 2.
- 3. REMOVE AND DISPOSE OF EXISTING STOP, STOP AHEAD (SYMBOL), AND CUSTOM STOP AHEAD SIGNS.
- 4. STATIONING IS BASED ON LOCATION OF EXISTING SIGNS.

660(2) FLASHING BEACON SUMMARY	
STA. AND OFFSET	FLASHING BEACON TYPE
10+30	RED LED, 12", SOLAR-POWERED
15+75	YELLOW LED, 12", SOLAR-POWERED



STATE OF ALASKA DEPARTMENT OF TRANSPORTATION AND PUBLIC FACILITIES
6860 GLACIER HIGHWAY, JUNEAU, AK 99811
(907) 485-1763
JNU BACK LOOP-MENDENHALL LOOP RD. INTERSECTION
SAFETY IMPROVEMENTS HSIP
SIGN AND FLASHING BEACON SUMMARIES



PATH: Q:\Jnu\SFWY00240\TR\00240_F1.dwg Tue, 13/Aug/19 08:17AM PLOT: PSPACE 1=1(F) OR MSPACE 1=1(F) TAB: TYPICALS		
ADDENDUM NUMBER		
ATTACHMENT NUMBER		
RECORD OF REVISIONS		
No.	DATE	DESCRIPTION

JNU BACK LOOP-
MENDENHALL LOOP RD.
INTERSECTION
SAFETY IMPROVEMENTS HSIP

PLAN VIEW

DESIGNED BY: D. EPSTEIN

CHECKED BY: D. EPSTEIN
DRAWN BY: D. STEVENS

STATE OF ALASKA
DEPARTMENT OF TRANSPORTATION
& PUBLIC FACILITIES
SOUTHCOST REGION

JNU BACK LOOP-
MENDENHALL LOOP RD.
INTERSECTION SAFETY
IMPROVEMENTS HSIP

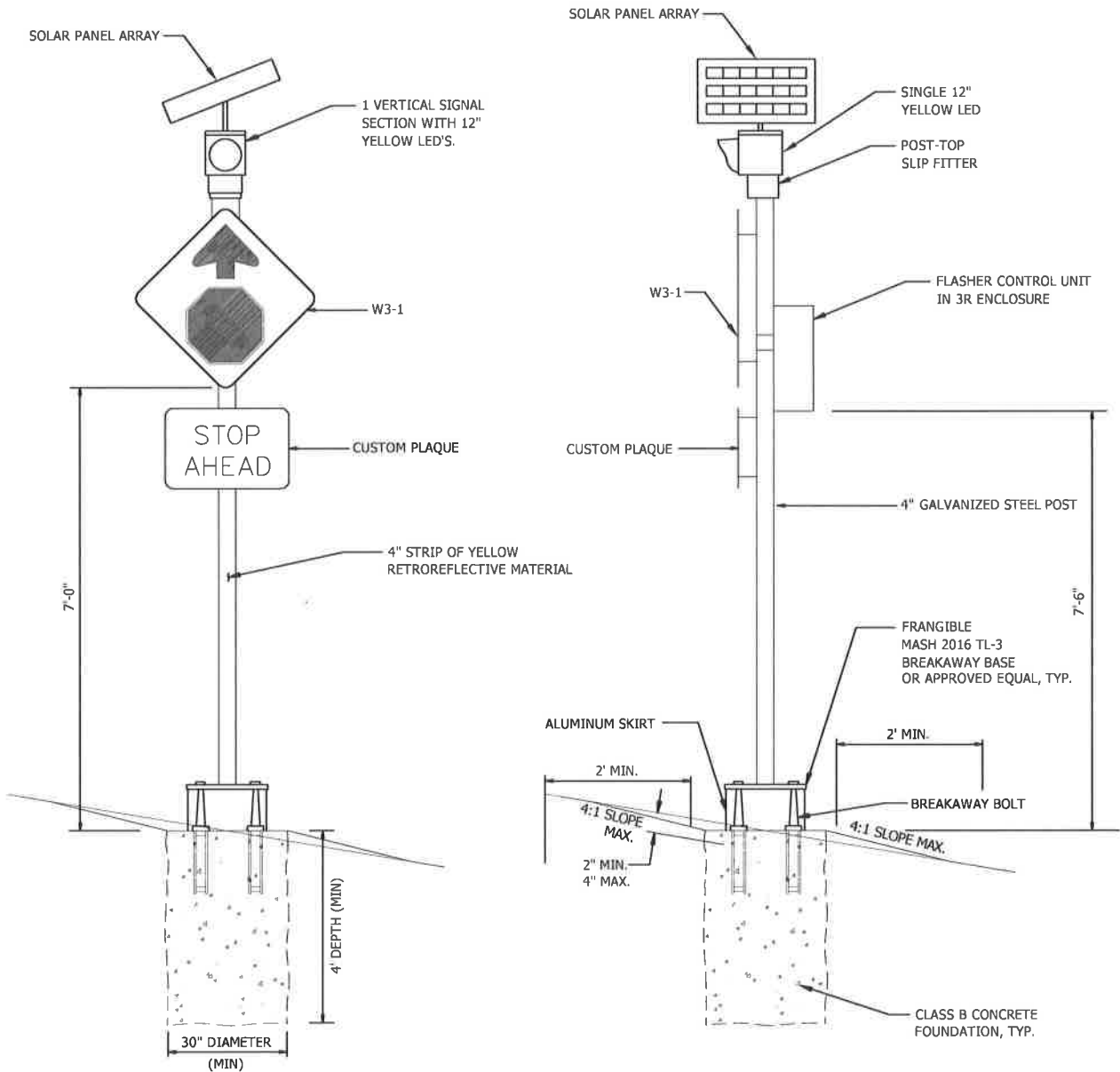
PLAN VIEW

PROJECT DESIGNATION NUMBER
SFHWY00240/0003(242)

STATE	YEAR
ALASKA	2019
SHEET NUMBER	TOTAL SHEETS
F1	8

NOTES:

1. THERE SHALL BE TWO FLASHING BEACONS INSTALLED IN THIS PROJECT: A YELLOW LED WARNING BEACON AND A RED STOP BEACON.
2. EACH BEACON SHALL HAVE A SINGLE 12-INCH SIGNAL HEAD.
3. THE SIGNPOSTS AND BREAKAWAY BASES SHALL CONFORM TO SECTION 740-2.02 OF THE 2017 STANDARD SPECIFICATIOONS FOR HIGHWAY CONSTRUCTION.
4. EACH BEACON SHALL HAVE ITS OWN CONTROL UNIT, AS PROVIDED BY THE MANUFACTURER. NO JUNCTION BOXES ARE REQUIRED.
5. THE BEACON DEPICTED IS THE YELLOW FLASHING UNIT TO BE CONSTRUCTED AT STA. 15+75. THE STOP BEACON COLOCATED WITH THE STOP SIGN AT APPROXIMATE STATION 10+30 IS IDENTICAL EXCEPT IT SHALL HAVE A RED LED SIGNAL HEAD.
6. AFFIX 4-INCH STRIPS OF RETROREFLECTIVE MATERIAL TO EACH SIGNPOST FOR THE FULL LENGTH OF THE SIGNPOSTS. STRIP COLOR SHALL BE YELLOW FOR THE WARNING BEACON SIGN AND RED FOR THE STOP BEACON SIGN.
7. THE BATTERY FOR EACH BEACON SHALL BE A 12-VOLT, MINIMUM 100 AMP-HR SYSTEM CAPABLE OF POWERING THE BEACON FOR A MINIMUM OF 15 DAYS OF CONTINUOUS OPERATION.
8. THE SOLAR PANEL SHALL BE RATED AT A MINIMUM 80 WATTS.
9. THE BEACONS SHALL FLASH AT A RATE OF NOT LESS THAN 50 OR MORE THAN 60 TIMES PER MINUTE. THE ILLUMINATED PERIOD OF EACH FLASH SHALL BE A MINIMUM OF 1/4 AND A MAXIMUM OF 2/3 OF THE TOTAL CYCLE.
10. INSTALL BEACONS IN ACCORDANCE WITH THE MANUFACTURER'S INSTRUCTIONS.
11. THE BOTTOM OF THE SIGNAL HOUSING OF THE STOP BEACON SHALL BE NOT LESS THAN 12 INCHES OR MORE THAN 24 INCHES ABOVE THE TOP OF THE STOP SIGN.



WARNING BEACON DETAILS

PATH:
Q:\jnu\SFHWY00240\TR\00240_F2.dwg
Tue, 13/Aug/19 09:04AM
PLOT:
PSPACE 1=1(F) OR MSPACE 1=1(F)
TAB: TYPICALS

ADDENDUM NUMBER		
ATTACHMENT NUMBER		
RECORD OF REVISIONS		
No.	DATE	DESCRIPTION

JNU BACK LOOP-
MENDENHALL LOOP RD.
INTERSECTION
SAFETY IMPROVEMENTS HSIP

WARNING BEACON DETAILS

DESIGNED BY: D. EPSTEIN



CHECKED BY: D. EPSTEIN

DRAWN BY: D. STEVENS

STATE OF ALASKA
DEPARTMENT OF TRANSPORTATION
& PUBLIC FACILITIES
SOUTHCOST REGION

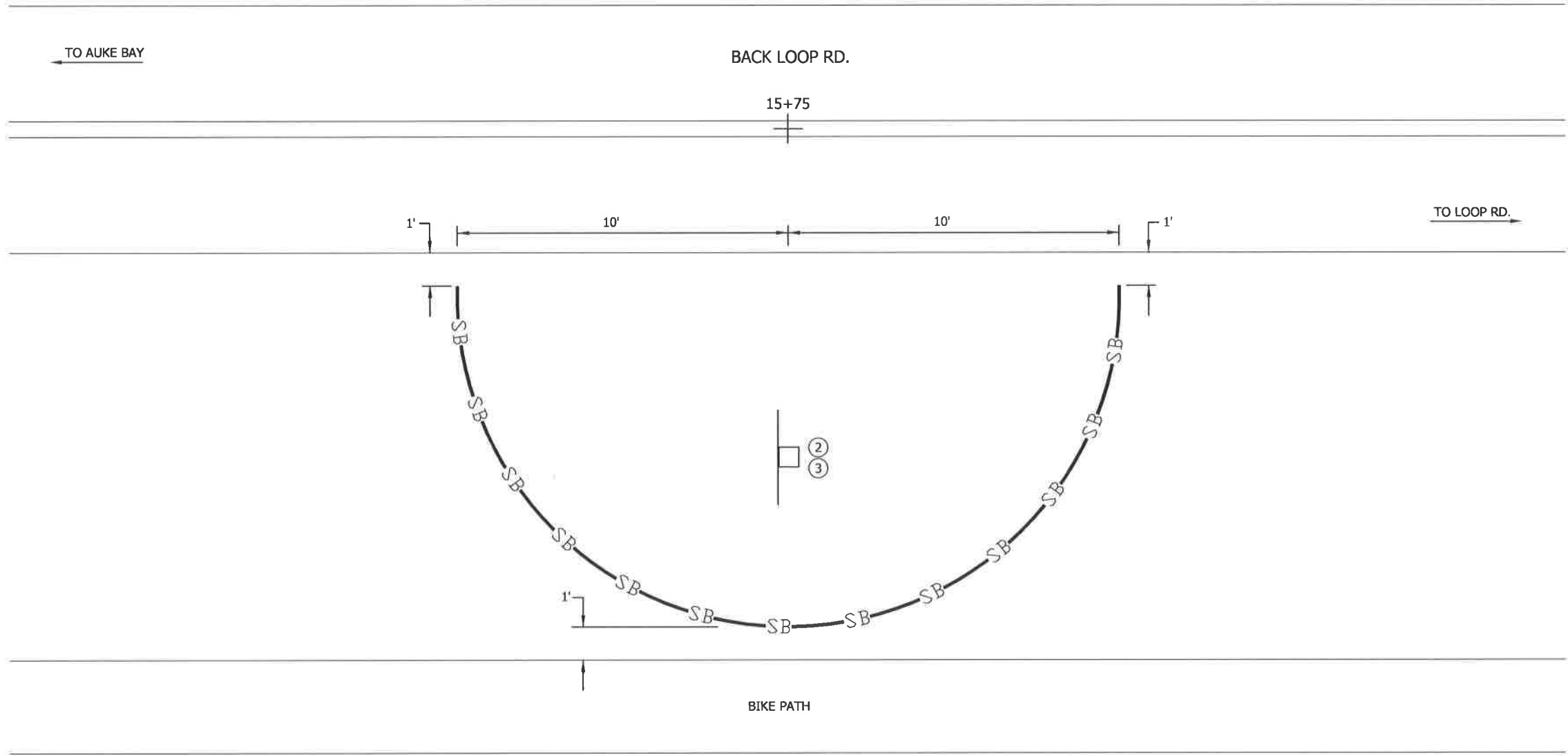
JNU BACK LOOP-
MENDENHALL LOOP RD.
INTERSECTION SAFETY
IMPROVEMENTS HSIP

WARNING
BEACON DETAILS

PROJECT DESIGNATION NUMBER

SFHWY00240/0003(242)

STATE	YEAR
ALASKA	2019
SHEET NUMBER	TOTAL SHEETS
F2	8



NOTES:

1. SEDIMENT BARRIER SHALL BE CONSTRUCTED TO ENVELOP CONSTRUCTION ACTIVITIES. PROVIDE MINIMUM 10 FEET CLEARANCE FROM NEAREST GROUND DISTURBANCE.
2. PROVIDE TEMPORARY OR PERMANENT STABILIZATION FOR ALL DISTURBED SOILS AND ERODIBLE STOCKPILES AT THE END OF EACH DAILY SHIFT OR PROVIDE EROSION AND SEDIMENT CONTROL BMP'S.
3. FOLLOW THE PROVISIONS OF ALASKA DOT&PF BMP GUIDE FOR EROSION AND SEDIMENT CONTROL TO CONSTRUCT AND MAINTAIN SEDIMENT BARRIER.
4. INSTALL EROSION AND SEDIMENT CONTROL DEVICES BEFORE BEGINNING EARTH DISTURBING ACTIVITIES. MAINTAIN AND MONITOR DAILY.
5. PREVENT OFF-SITE TRACKING OF SEDIMENT BY WORKERS, VEHICLES AND/OR EQUIPMENT. REGULARLY SWEEP PAVEMENT IN WORK AREAS AND EMPLOY GOOD HOUSEKEEPING PRACTICES.
6. COMPLY WITH ALL NECESSARY PERMIT CONDITIONS AND ENVIRONMENTAL COMMITMENTS AS OUTLINED IN THE CONSTRUCTION DOCUMENTS.
7. THERE SHALL BE NO SEDIMENT BARRIER FOR SIGN 1.

PATH:
Q:\Jnu\SFHWY00240\TR\00240_P1.dwg
Tue, 13/Aug/19 10:28AM
PLOT:
PSPACE 1=1(F) OR MSPACE 1=1(F)
TAB: TYPICALS

ADDENDUM NUMBER		
ATTACHMENT NUMBER		
RECORD OF REVISIONS		
No.	DATE	DESCRIPTION

JNU BACK LOOP-
MENDENHALL LOOP RD.
INTERSECTION
SAFETY IMPROVEMENTS HSIP

EROSION AND SEDIMENT
CONTROL PLAN

DESIGNED BY: D, EPSTEIN

ESCP NOT SEALED IN
ACCORDANCE WITH
ALASKA HIGHWAY
PRECONSTRUCTION
MANUAL SECTION 1120.7.3

CHECKED BY: D, EPSTEIN

DRAWN BY: D, STEVENS

STATE OF ALASKA
DEPARTMENT OF TRANSPORTATION
& PUBLIC FACILITIES
SOUTHCOST REGION

JNU BACK LOOP-
MENDENHALL LOOP RD.
INTERSECTION SAFETY
IMPROVEMENTS HSIP
EROSION AND
SEDIMENT CONTROL
PLAN

PROJECT DESIGNATION NUMBER

SFWY00240/0003(242)

STATE	YEAR
ALASKA	2019
SHEET NUMBER	TOTAL SHEETS
P1	8

FILE Q:\jnu\SFHWY00240\TR\00240_T1.dwg

DATE 7/12/2019 9:59 LAYOUT T1

DESIGNED D.E.

CHECKED D.E.

DRAFTED

D.S.

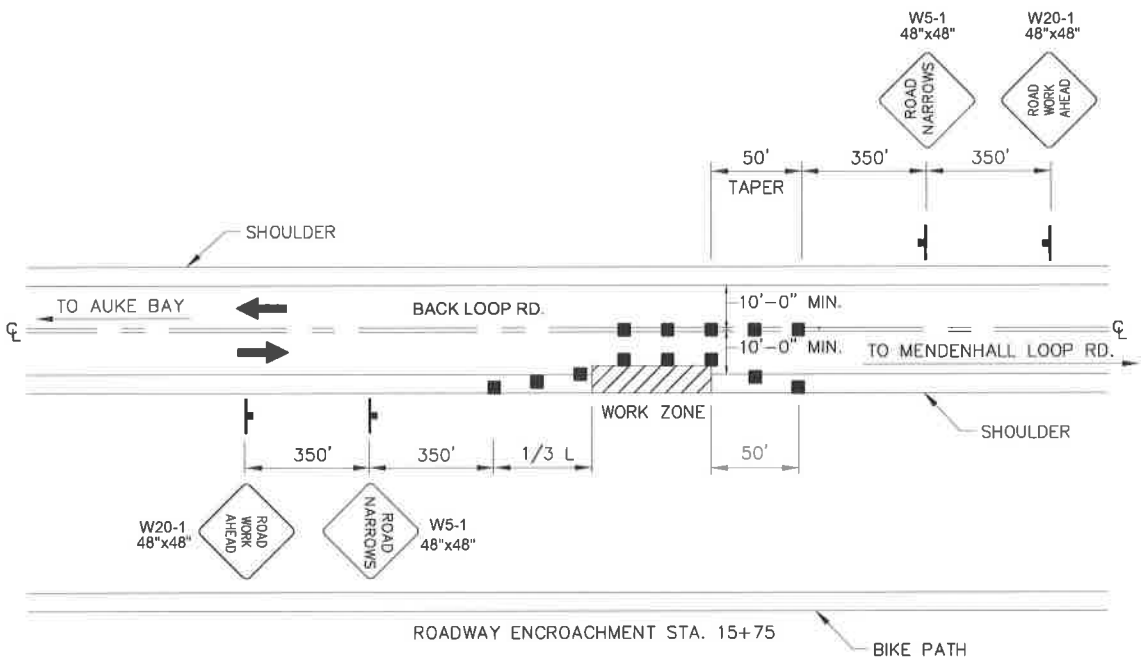
NO.	DATE	REVISION	STATE	PROJECT DESIGNATION	YEAR	SHEET NO.	TOTAL SHEETS
			ALASKA	SFHWY00240/0003242	2019	T1	8

TRAFFIC CONTROL NOTES

- IT IS THE INTENT OF THIS TRAFFIC CONTROL PLAN (TCP) TO ILLUSTRATE SOME BUT NOT ALL OF THE TRAFFIC CONTROL CONFIGURATIONS THAT WILL BE REQUIRED BY THIS PROJECT. TRAFFIC CONTROL PLANS FOR CONFIGURATIONS NOT COVERED BY THIS TCP SHALL BE DEVELOPED BY THE CONTRACTOR. ALL TCP'S MUST BE SUBMITTED FOR APPROVAL BY THE ENGINEER PRIOR TO USE.
- TWO LANES SHALL BE MAINTAINED AT ALL TIMES IN NON-WORK AREAS AND DURING NON-WORKING HOURS.
- TEMPORARY DRIVING LANES SHALL BE A MINIMUM WIDTH OF 10'-0" WIDE.
- CHANNELIZATION DEVICES USED AT NIGHT SHALL BE LIT IN ACCORDANCE WITH THE ALASKA TRAFFIC MANUAL.
- CONTRACTOR SHALL AVOID BLOCKING BIKE PATH AND BUS STOP.

TCP LEGEND

- SIGN
- CHANNELIZING DEVICE
- TRAFFIC FLOW



ROADWAY ENCROACHMENT

NOTES:

- $L = WS = 8 \times 45 = 360'$
- DEVICE SPACING ALONG TAPER = 45' MAX.
- DEVICE SPACING ALONG TANGENT = 90' MAX.

TCP NOT SEALED IN
ACCORDANCE WITH
ALASKA HIGHWAY
PRECONSTRUCTION
MANUAL SECTION
1400.3.5

STATE OF ALASKA DEPARTMENT OF TRANSPORTATION
AND PUBLIC FACILITIES
6860 GLACIER HIGHWAY, JUNEAU, AK 99811
(907) 465-1763

JNU BACK LOOP-MENDENHALL
LOOP RD. INTERSECTION
SAFETY IMPROVEMENTS HSIP

TRAFFIC CONTROL PLAN