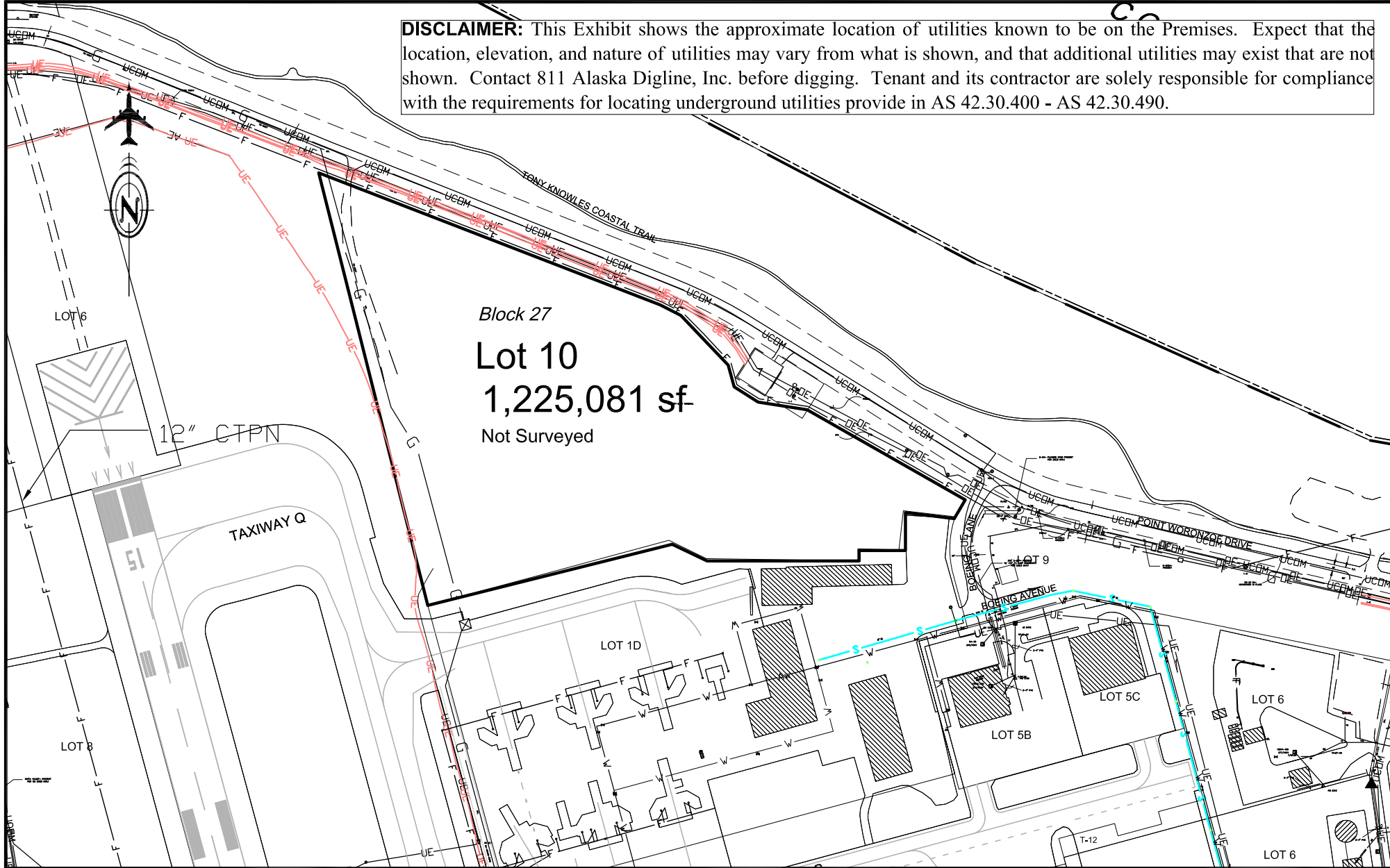


**DISCLAIMER:** This Exhibit shows the approximate location of utilities known to be on the Premises. Expect that the location, elevation, and nature of utilities may vary from what is shown, and that additional utilities may exist that are not shown. Contact 811 Alaska Digline, Inc. before digging. Tenant and its contractor are solely responsible for compliance with the requirements for locating underground utilities provide in AS 42.30.400 - AS 42.30.490.



|   |   |   |   |                                 |
|---|---|---|---|---------------------------------|
| <p>Not Surveyed<br/>Proposed Lease Lot lines based on tenants submittal</p> | <p>0 200 400<br/>SCALE IN FEET</p> <p>Airport Engineering</p> | <p>STATE OF ALASKA<br/>DEPARTMENT OF TRANSPORTATION<br/>AND PUBLIC FACILITIES</p> <p>Ted Stevens<br/><b>Anchorage</b><br/>International Airport<br/>"AeroNexus"</p> | <p><b>EXHIBIT A</b></p> <p>ADA NO: 32306<br/>EXHIBIT DATE: August 19, 2019</p> <p>DRAFTED:      CHECKED:      APPROVED:</p> | <p>SHEET<br/>1<br/>of<br/>1</p> |
|---|---|---|---|---------------------------------|