

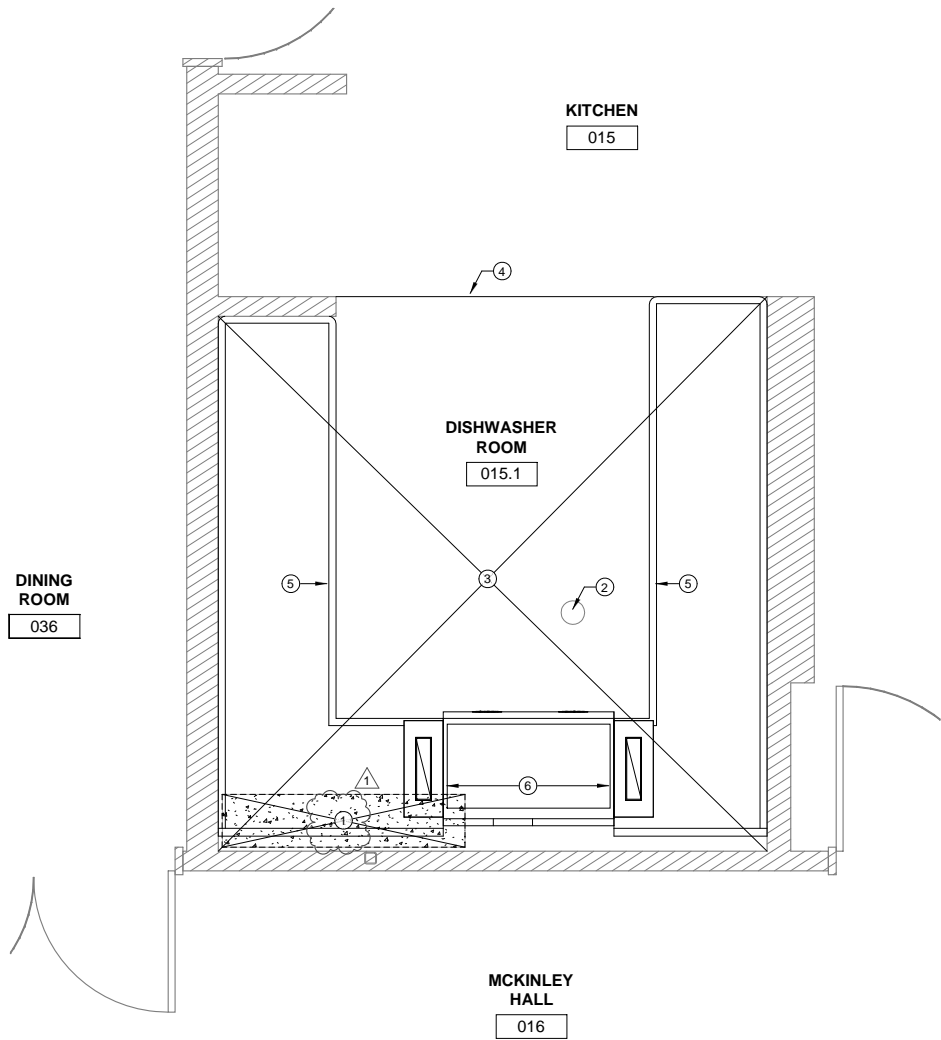
1 DISHWASHER ROOM - DEMO PLAN
A201 1/2" = 1'-0" REFERENCE: 1/ A200

DEMOLITION NOTES

A. SEE A200 FOR TYPICAL DEMOLITION NOTES.

DEMOLITION KEYNOTES

- 1 REMOVE EXISTING QUARRY TILE WALL BASE AND QUARRY TILE FLOORING DOWN TO FACE OF EXISTING CONCRETE ON METAL DECK
- 2 REMOVE FAILING CONCRETE SLAB AT CORNER OF ROOM PER S201
- 3 REMOVE FLOOR DRAIN PER M101
- 4 REMOVE EXISTING STAINLESS STEEL COUNTERS, SHELVING, AND BACKSPLASH AS REQUIRED TO REPAIR FLOOR. SALVAGE FOR REINSTALLATION.
- 5 ALTERNATE WORK: REMOVE EXISTING DISHWASHER AND COMPONENTS. SEE M101 FOR ADDITIONAL INFORMATION.



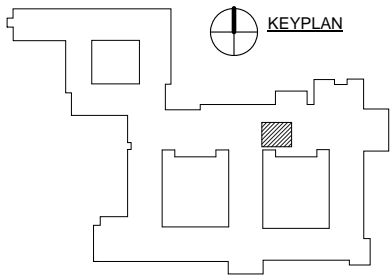
2 DISHWASHER ROOM - RENO PLAN
A201 1/2" = 1'-0" REFERENCE: 1/ A200

RENOVATION NOTES

A. SEE A200 FOR TYPICAL RENOVATION NOTES.
B. SEE A600 FOR ENLARGED PLAN AND ASSEMBLY TYPES.

RENOVATION KEYNOTES

- 1 PROVIDE CONCRETE SLAB PER S201
- 2 FLOOR DRAIN PER M101
- 3 PROVIDE RESINOUS FLOORING AND INTEGRAL COVE BASE TO 5" A.F.F. PREP EXISTING CONCRETE FLOOR AND PROVIDE LEVELING COMPOUND SLOPED TO DRAIN PRIOR TO INSTALLATION OF FLOORING.
- 4 PROVIDE TRANSITION STRIP
- 5 REINSTALL SALVAGED STAINLESS STEEL COUNTERS, SHELVING, AND BACKSPLASH TO ENSURE A WATERTIGHT INSTALLATION. COORDINATE INSTALLATION WITH AWARDED ALTERNATE WORK.
- 6 ALTERNATE WORK: PROVIDE DISHWASHER PER M101



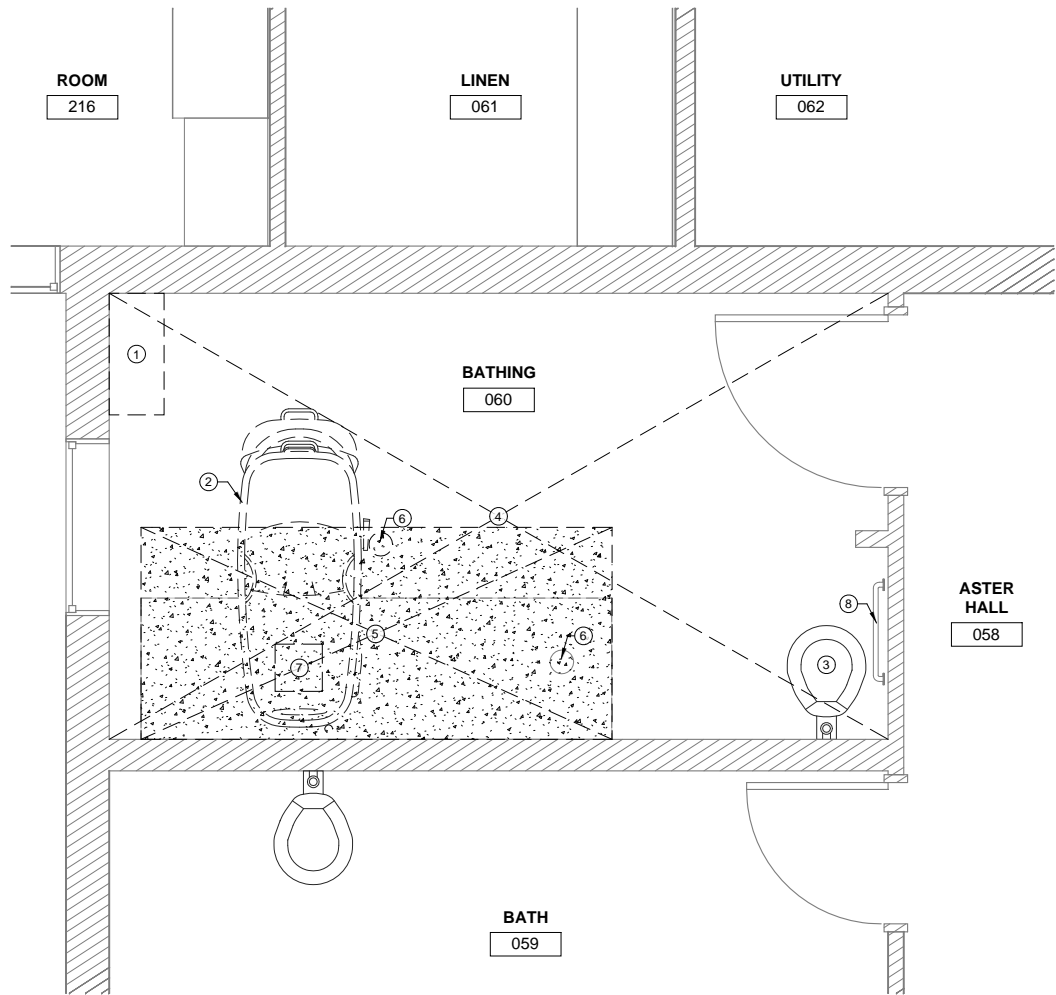
1 ADDENDUM 1 11 FEB 2019

FAIRBANKS
PIONEER HOME -
KITCHEN FLOOR
AND TUB ROOM
MODERNIZATIONS

ISSUE DATE 05 APR 2018
COMM. NUMBER 381701
DESIGNED BY ENS
DRAWN BY ENS
SCALE 0" 1"

DISHWASHER
ROOM - DEMO
AND RENO

A201



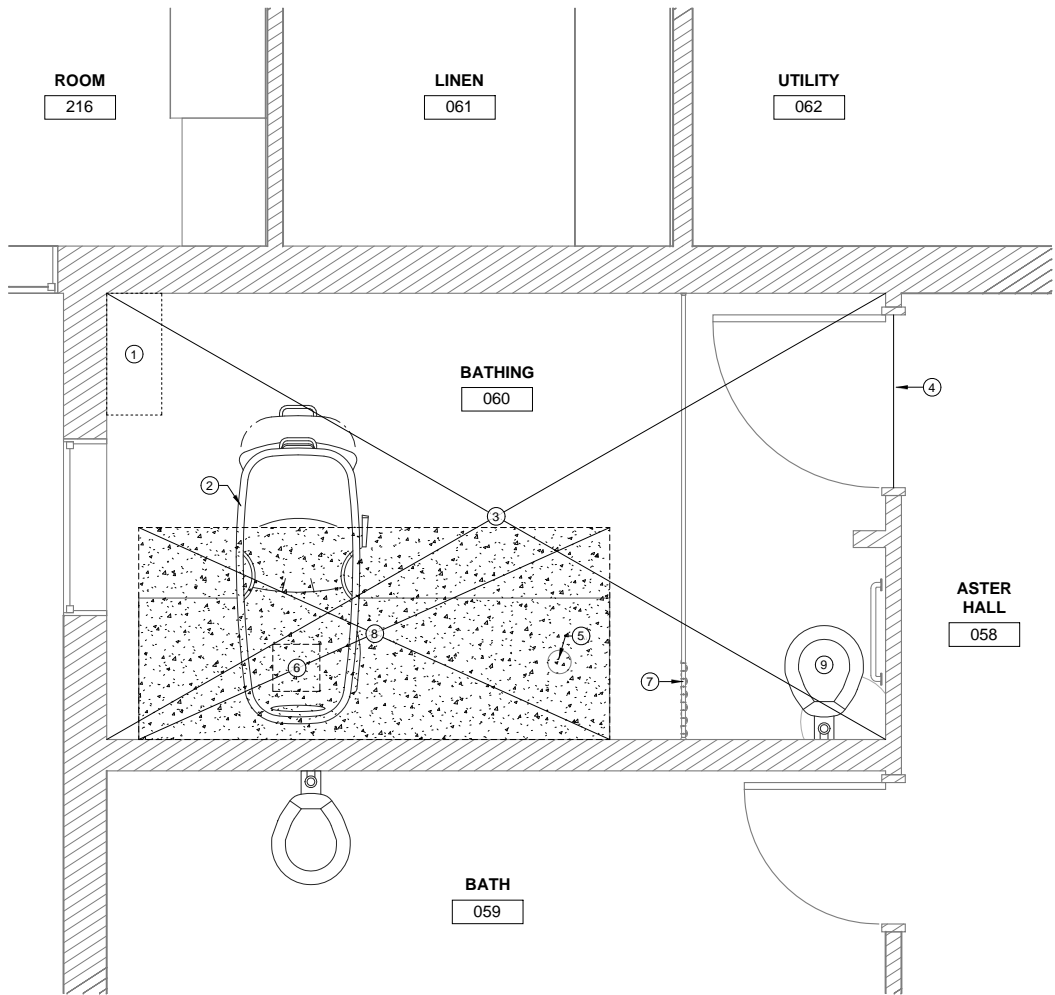
1 AURORA TUB ROOM - DEMO PLAN
A203 1/2" = 1'-0" REFERENCE: 1/ A200

DEMOLITION NOTES

A. SEE A200 FOR TYPICAL DEMOLITION NOTES.

DEMOLITION KEYNOTES

- 1 REMOVE EXISTING SHELVEING AND SALVAGE FOR REINSTALLATION
- 2 REMOVE EXISTING TUB AND SALVAGE FOR REINSTALLATION
- 3 REMOVE EXISTING TOILET PER M300 AND M301
- 4 REMOVE EXISTING CERAMIC WALL BASE AND TILE FLOOR DOWN TO EXISTING CONCRETE ON METAL DECK; EXISTING CERAMIC TILE AND SOLID SURFACE WALL FINISHES TO REMAIN.
- 5 REMOVE SLAB AND METAL DECK PER S203
- 6 DEMOLISHED FLOOR DRAIN LOCATION, SEE M300 AND M301
- 7 DEMOLISHED FLOOR SINK LOCATION, SEE M300 AND M301
- 8 EXISTING GRAB BAR TO REMAIN



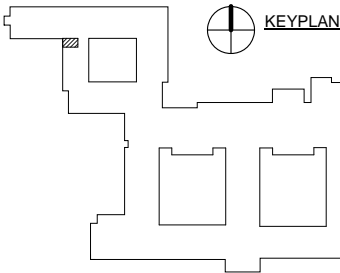
2 AURORA TUB ROOM - RENO PLAN
A203 1/2" = 1'-0" REFERENCE: 1/ A200

RENOVATION NOTES

A. SEE A200 FOR TYPICAL RENOVATION NOTES.
B. SEE A600 FOR ENLARGED PLAN AND ASSEMBLY TYPES.

RENOVATION KEYNOTES

- 1 REINSTALL SALVAGED SHELVEING, SECURE TO WALL
- 2 REINSTALL SALVAGED TUB
- 3 PROVIDE RESINOUS FLOORING AND INTEGRAL COVE BASE TO 5" A.F.F. PREP EXISTING CONCRETE FLOOR AND PROVIDE LEVELING COMPOUND SLOPED TO DRAIN PRIOR TO INSTALLATION OF FLOORING.
- 4 PROVIDE FLOORING TRANSITION
- 5 FLOOR DRAIN PER M300 AND M301
- 6 FLOOR SINK PER M300 AND M301
- 7 EXISTING CURTAIN AND OVERHEAD CEILING MOUNTED TRACK TO REMAIN
- 8 PROVIDE CONCRETE SLAB PER S203
- 9 WATER CLOSET PER M300 AND M301



1 ADDENDUM 1 11 FEB 2019

FAIRBANKS
PIONEER HOME -
KITCHEN FLOOR
AND TUB ROOM
MODERNIZATIONS

ISSUE DATE 05 APR 2018
COMM. NUMBER 381701
DESIGNED BY ENS
DRAWN BY ENS
SCALE 0" 1"

AURORA TUB
ROOM - DEMO
AND RENO

A203

INTERIOR ASSEMBLY NOTES

- 1 - TYPICAL
A. SEE A6 SHEETS FOR INTERIOR DETAILS.
B. COORDINATE ABOVE CEILING WORK.

2 - INTERIOR FINISHES

- A. SEE ROOM SCHEDULE FOR WALL BASE AND APPLIED FINISHES NOT SHOWN ON ASSEMBLY TYPES.
B. SEE MATERIAL SCHEDULE AND SPECIFICATIONS FOR SUBSTRATES REQUIRED BY APPLIED FINISHES.

3 - WATER RESISTANT ASSEMBLIES

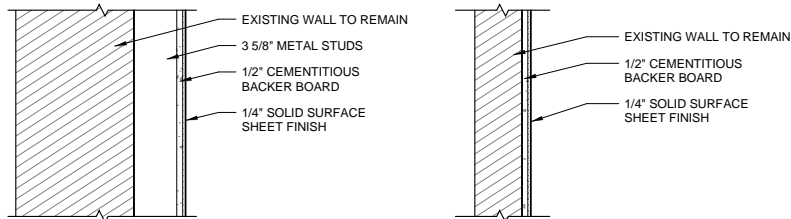
- A. PROVIDE CEMENTITIOUS BACKER BOARD FOR SOLID SURFACE WALL FINISH AT ENTIRE PERIMETER OF MOOSEWOOD TUB ROOM.

FINISH PLAN NOTES

- A. FURNITURE, EQUIPMENT, SOME CASEWORK, AND OTHER ELEMENTS MAY NOT BE SHOWN FOR CLARITY OF FLOOR FINISHES.
B. CHANGE IN FLOOR MATERIAL TO OCCUR AT CENTERLINE OF DOOR IN CLOSED POSITION.

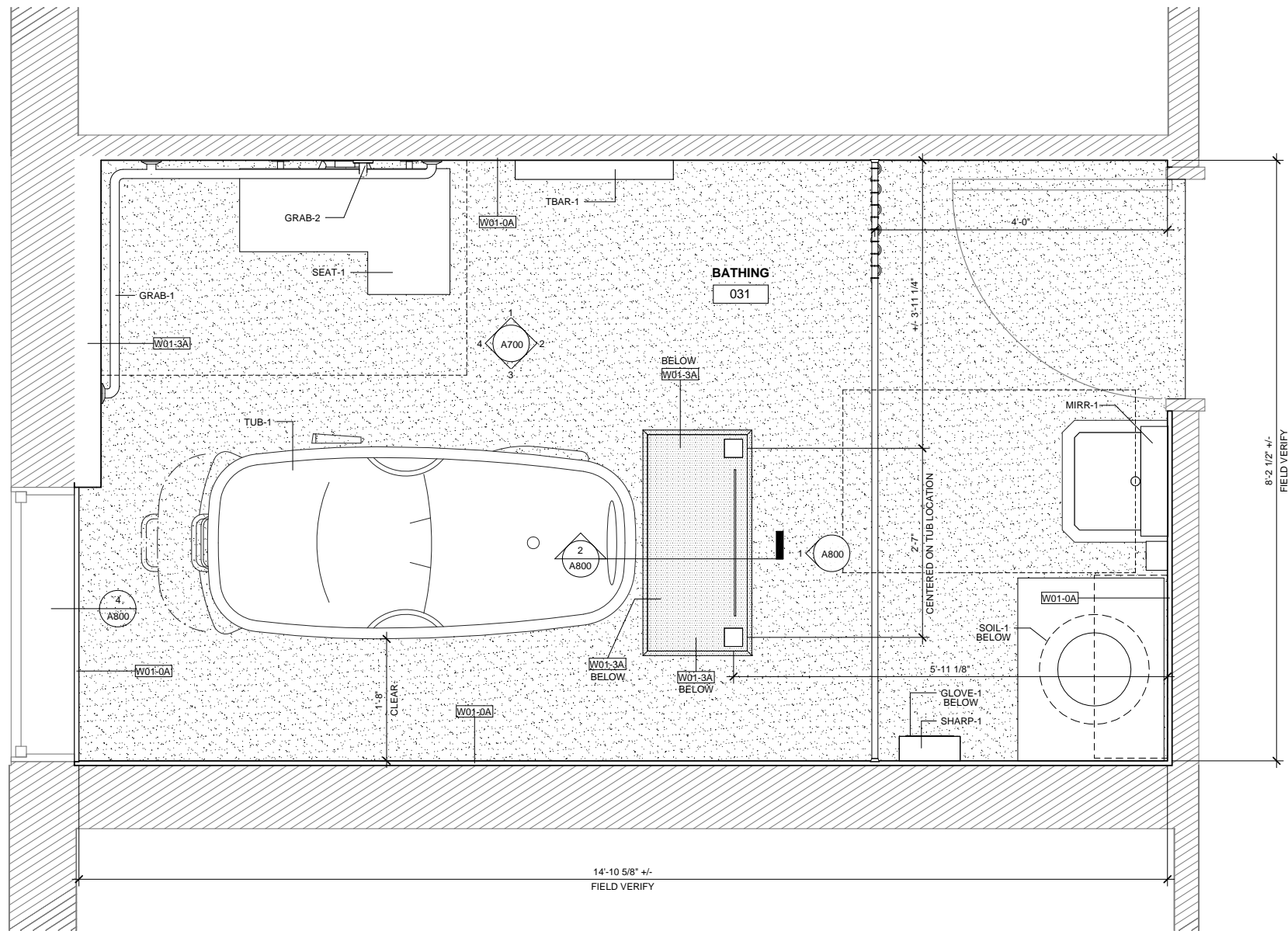
FINISH PLAN LEGEND

RESINOUS FLOORING, RF-2 PER A900



W01-3A WALL INTERIOR 3 5/8" STUD BACKER BOARD ONE SIDE

W01-0A WALL INTERIOR EXISTING STUD BACKER BOARD ONE SIDE



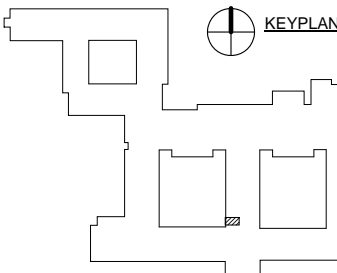
1 INTERIOR PLAN - FINISHES AND SIGNAGE - 1ST FLOOR
A600 1" = 1'-0"

1 ADDENDUM 1 11 FEB 2019

FAIRBANKS
PIONEER HOME -
KITCHEN FLOOR
AND TUB ROOM
MODERNIZATIONS

ISSUE DATE 05 APR 2018
COMM. NUMBER 381701
DESIGNED BY ENS
DRAWN BY ENS
SCALE 0" 1"

INTERIOR PLAN -
ENLARGED
MOOSEWOOD TUB
ROOM



A600

ROOM SCHEDULE												
ROOM		FLOOR		WALL			DOOR		CEILING		ROOM	
NUMBER	NAME	FINISH	BASE	FINISH	ACCENT		FINISH	FRAME FINISH	FINISH	HEIGHT	REMARKS	NUMBER
					FINISH	LOCATION						
015	KITCHEN	EXISTING	EXISTING	EXISTING	EXISTING	EXISTING	EXISTING	EXISTING	EXISTING	EXISTING		015
015.1	DISHWASHER ROOM	RF-1	RF-1	EXISTING	EXISTING	EXISTING	-	-	EXISTING	EXISTING		015.1
016	MCKINLEY HALL	EXISTING	EXISTING	EXISTING	EXISTING	EXISTING	EXISTING	EXISTING	EXISTING	EXISTING		016
020	FORGET-ME-NOT HALL	EXISTING	EXISTING	EXISTING	EXISTING	EXISTING	EXISTING	EXISTING	EXISTING	EXISTING		020
029	FAN ROOM NO. 4	EXISTING	EXISTING	EXISTING	EXISTING	EXISTING	EXISTING	EXISTING	EXISTING	EXISTING		029
030A	CAFE	EXISTING	EXISTING	EXISTING	EXISTING	EXISTING	EXISTING	EXISTING	EXISTING	EXISTING		030A
031	BATHING	RF-2	RF-2	SLD-1	SLD-2	SEE A700	EXISTING	PNT-60	PNT-80	EXISTING	1.	031
036	DINING ROOM	EXISTING	EXISTING	EXISTING	EXISTING	EXISTING	EXISTING	EXISTING	EXISTING	EXISTING		036
058	ASTER HALL	EXISTING	EXISTING	EXISTING	EXISTING	EXISTING	EXISTING	EXISTING	EXISTING	EXISTING		058
059	BATH	EXISTING	EXISTING	EXISTING	EXISTING	EXISTING	EXISTING	EXISTING	EXISTING	EXISTING		059
060	BATHING	RF-2	RF-2	EXISTING	EXISTING	EXISTING	EXISTING	EXISTING	EXISTING	EXISTING		060
061	LINEN	EXISTING	EXISTING	EXISTING	EXISTING	EXISTING	EXISTING	EXISTING	EXISTING	EXISTING		061
062	UTILITY	EXISTING	EXISTING	EXISTING	EXISTING	EXISTING	EXISTING	EXISTING	EXISTING	EXISTING		062
127	ROOM	EXISTING	EXISTING	EXISTING	EXISTING	EXISTING	EXISTING	EXISTING	EXISTING	EXISTING		127
216	ROOM	EXISTING	EXISTING	EXISTING	EXISTING	EXISTING	EXISTING	EXISTING	EXISTING	EXISTING		216

ROOM SCHEDULE NOTES

- A. PROVIDE FINISHES TO FULL HEIGHT OF WALL UNLESS NOTED OTHERWISE.
B. SEE MATERIAL SCHEDULE FOR FINISH INFORMATION.
C. SEE ASSEMBLY TYPES FOR FINISH SUBSTRATES.
D. SEE FLOOR FINISH PLAN WHERE FLOOR FINISH VARIES.
E. SEE INTERIOR ELEVATIONS WHERE FLOOR BASE VARIES.
F. SEE INTERIOR ELEVATIONS WHERE WALL ACCENT VARIES.
G. SEE INTERIOR ELEVATIONS FOR LOCATION AND EXTENT OF WALL ACCENT FINISH.

ROOM SCHEDULE REMARKS

1. PATCH, PREP, AND PAINT ENTIRE CEILING.

ROOM SCHEDULE ABBREVIATIONS

SEE A001 FOR STANDARD ARCHITECTURAL ABBREVIATIONS
SEE MATERIAL SCHEDULE FOR MATERIAL TYPES

AFF	ABOVE FINISHED FLOOR
CFCI	CONTRACTOR FURNISHED CONTRACTOR INSTALLED
CFOI	CONTRACTOR FURNISHED OWNER INSTALLED
MFSD	MANUFACTURER'S STANDARD
NIC	NOT IN CONTRACT
OFOI	OWNER FURNISHED OWNER INSTALLED
OFCI	OWNER FURNISHED CONTRACTOR INSTALLED
SPEC	SPECIFICATION

MATERIAL COLOR BOARD				
TYPE	DESCRIPTION	MANUFACTURER	BASIS OF DESIGN	
			MODEL	COLOR
MTL-1	METAL FINISH - BATH ACCESSORIES	TBD	TBD	STAINLESS STEEL SATIN FINISH
PL-1	PLASTIC LAMINATE - CASEWORK	FORMICA	LAMINATE WOOD GRAINS	PLANKED DELUXE PEAR 6206-43
PNT-50	INTERIOR PAINT - WALL HEATER	SHERWIN WILLIAMS	PROMAR 200 INTERIOR LATEX	SW 6197 ALOOF GRAY
PNT-60	INTERIOR PAINT - DOOR FRAME AND COLUMNS	SHERWIN WILLIAMS	PROMAR 200 INTERIOR LATEX	SW 6223 STILL WATER
PNT-80	INTERIOR PAINT - CEILING	SHERWIN WILLIAMS	PROMAR 200 INTERIOR LATEX	SW 7007 CEILING BRIGHT WHITE
PRTN-1	PARTITION TRACK AND CURTAIN	INPRO	CLUSKEZE WITH ANTIMICROBIAL FABRIC	CURTAIN ARRAY EUCALYPTUS TRACK WHITE
RF-1	RESINOUS FLOORING	STONHARD	STONCLAD	MANUFACTURERS STANDARD
RF-2	RESINOUS FLOORING	STONHARD	STONSHIELD	MANUFACTURERS STANDARD
SLD-1	SOLID SURFACE - TYPICAL WALL COVERING	INPRO	BIOPRISM	POLAR ICE
SLD-2	SOLID SURFACE - SHOWER WALL COVERING	INPRO	BIOPRISM - 12" SQUARE	LUNAR
SLD-3	SOLID SURFACE - COUNTERTOP	LG HAUSY	HI-MACS	COCONUT G170
WF-1	WINDOW FILM - TRANSLUCENT	TROVE	WINDOW FILM - TRANSLUCENT	DRIFT

MATERIAL SCHEDULE NOTES

- A. FINISH PLANS, INTERIOR ELEVATIONS, AND ROOM SCHEDULE FOR LOCATION OF FINISHES.
B. THE MATERIAL SCHEDULE IS ORGANIZED BY SPEC NUMBER. MATERIALS WITH SPEC NUMBERS INCLUDING 'NA' ARE INTENDED AS A BASIS OF DESIGN WITH NO CORRELATING SPEC SECTION. SEE MATERIAL SCHEDULE INDEX BELOW TO QUICKLY FIND THE SPEC NUMBER FOR MATERIALS ORGANIZED BY TYPE.

MATERIAL SCHEDULE REMARKS

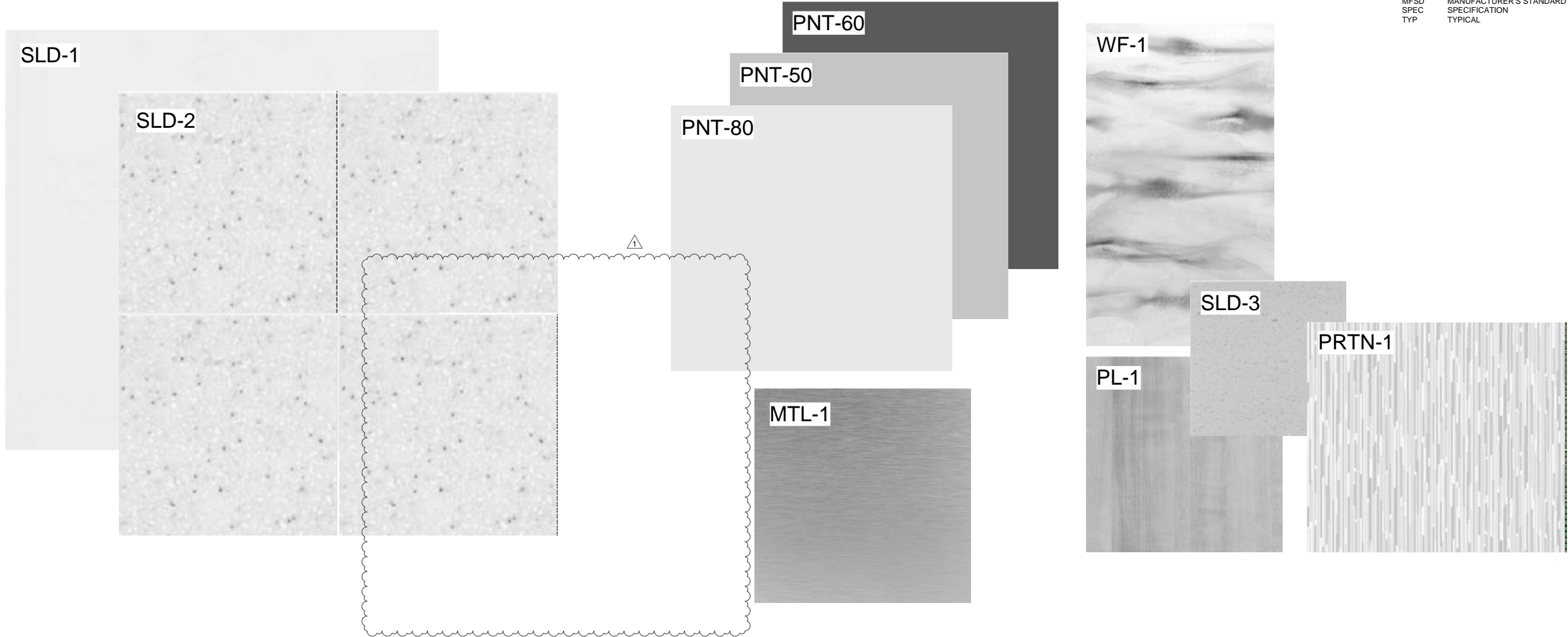
MISCELLANEOUS

1. NOT USED

MATERIAL SCHEDULE ABBREVIATIONS

SEE A001 FOR STANDARD ARCHITECTURAL ABBREVIATIONS
MATERIAL TYPES DEFINED IN MATERIAL SCHEDULE

MFSD	MANUFACTURER'S STANDARD
SPEC	SPECIFICATION
TYP	TYPICAL



1. ADDENDUM 1 11 FEB 2019

FAIRBANKS
PIONEER HOME -
KITCHEN FLOOR
AND TUB ROOM
MODERNIZATIONS

ISSUE DATE 05 APR 2018
COMM. NUMBER 381701
DESIGNED BY ENS
DRAWN BY ENS
SCALE 0" 1"

SCHEDULES AND
TYPES - ROOM

A900

PART 1 GENERAL

1.1 SCOPE: SECTION 09 67 23 – RESINOUS FLOORING

- A. Drawings and general provisions of the Contract, including General and Supplementary Conditions and Division 01 Specification Sections, apply to this Section.

1.2 SUMMARY

- A. This Section includes one resinous flooring system, one with urethane body.
 - 1. Application Method: Metal, power or hand troweled.

1.3 SUBMITTALS

- A. Product Data: For each type of product indicated. Include manufacturer's technical data, application instructions, and recommendations for each resinous flooring component required.
- B. Samples for Verification: For each resinous flooring system required, 5 inches (150 mm) square, applied to a rigid backing.
- C. Product Schedule: Use resinous flooring designations indicated in Part 2 and room designations indicated on Drawings in product schedule.
- D. Installer Certificates: Signed by manufacturer certifying that installers comply with specified requirements.
- E. Maintenance Data: For resinous flooring to include in maintenance manuals.

1.4 QUALITY ASSURANCE

- A. No request for substitution shall be considered that would change the generic type of floor system specified (i.e. urethane mortar based system with 25% post-industrial recycled glass). Equivalent materials of other manufactures may be substituted only on approval of Architect or Engineer. Request will be subject to specification requirements described in this section.
- B. Installer Qualifications: Engage an experienced installer (applicator) who is experienced in applying resinous flooring systems similar in material, design, and extent to those indicated for this Project, whose work has resulted in applications with a record of

successful in-service performance, and who is acceptable to resinous flooring manufacturer.

1. Engage an installer who is certified in writing by resinous flooring manufacturer as qualified to apply resinous flooring systems indicated.
 2. Contractor shall have completed at least 5 projects of similar size and complexity.
- C. Source Limitations: Obtain primary resinous flooring materials, including primers, resins, hardening agents, grouting coats, and topcoats, through one source from a single manufacturer, with not less than ten years of successful experience in manufacturing and installing principal materials described in this section. Provide secondary materials, including patching and fill material, joint sealant, and repair materials, of type and from source recommended by manufacturer of primary materials.
- D. Manufacturer Field Technical Service Representatives: Resinous flooring manufacture shall retain the services of Field Technical Service Representatives who are trained specifically on installing the system to be used on the project.
1. Field Technical Services Representatives shall be employed by the system manufacture to assist in the quality assurance and quality control process of the installation and shall be available to perform field problem solving issues with the installer.
- E. Pre-installation Conference:
1. General contractor shall arrange a meeting not less than thirty days prior to starting work.
 2. Attendance:
 - a. General Contractor.
 - b. Architect or Owner's Representative.
 - c. Manufacturer/Installer's Representative.

1.5 DELIVERY, STORAGE, AND HANDLING

- A. Deliver materials in original packages and containers, with seals unbroken, bearing manufacturer's labels indicating brand name and directions for storage and mixing with other components. Store material per Product Data sheet.
- B. Store materials to prevent deterioration from moisture, heat, cold, direct sunlight, or other detrimental effects.

- C. All materials used shall be factory pre-weighed and pre-packaged in single, easy to manage batches to eliminate on site mixing errors. No on site weighing or volumetric measurements allowed.

1.6 PROJECT CONDITIONS

- A. Environmental Limitations: Comply with resinous flooring manufacturer's written instructions for substrate temperature, ambient temperature, moisture, ventilation, and other conditions affecting resinous flooring application.
 - 1. Maintain material and substrate temperature between 65 and 85 deg F (18 and 30 deg C) during resinous flooring application and for not less than 24 hours after application.
- B. Lighting: Provide permanent lighting or, if permanent lighting is not in place, simulate permanent lighting conditions during resinous flooring application.
- C. Close spaces to traffic during resinous flooring application and for not less than 24 hours after application, unless manufacturer recommends a longer period.
- D. Concrete substrate shall be properly cured. A vapor barrier must be present for concrete subfloors on or below grade. Otherwise, an osmotic pressure resistant grout must be installed prior to the resinous flooring

1.7 WARRANTY

- A. Manufacturer shall furnish a single, written warranty covering both material and workmanship for a period of (1) full years from date of installation, or provide a joint and several warranty signed on a single document by material manufacturer and applicator jointly and severally warranting the materials and workmanship for a period of (1) full year from date of installation. A sample warranty letter must be included with bid package or bid may be disqualified.

PART 2 PRODUCTS

2.1 RESINOUS FLOORING

- A. Available Products: Subject to compliance with requirements, products that may be incorporated into the Work include,
 - 1. Build of Broadcast or liquid rich type systems will not be accepted, and will result in a disqualification from bid.

- B. Acceptable Manufactures,
 - 1. Stonhard Basis of design In Dishwasher Room, noted as RF-1.
 - 2. Stonshield Basis of design in Moose Room and Aurora Room noted as RF-2.
- C. Products: Subject to compliance with requirements:
 - 1. Stonhard, Inc.; Stonclad G2®. Unsealed system.
- D. System Characteristics:
 - 1. Color and Pattern: Mfg. Standard colors to be selected by Architect.
 - 2. Wearing Surface: Standard smooth metal troweled, unsealed.
 - 3. Integral Cove Base: 5 inches Tall.
 - 4. Overall System Thickness: 1/4-inch.
- E. System Components: Manufacturer's standard components that are compatible with each other and as follows:
 - 1. Primer:
 - a. Material design basis: Stonhard Urethane Primer.
 - b. Resin: Urethane.
 - c. Formulation Description: 100 percent solids.
 - d. Application Method: squeegee and back roll method.
 - e. Number of Coats: (1) one.
 - 2. Mortar Base:
 - a. Material design basis: Stonclad G2
 - b. Resin: Polyurethane.
 - c. Formulation Description: (4) four component, 100 percent solids. Low VOC.
 - d. Application Method: Metal Trowel.
 - 1) Thickness of Coats: 1/4-inch (6.4 mm).

- 2) Number of Coats: One.
- e. Aggregates: Quartz pigmented blended aggregate; with 25% Post-industrial recycled glass.
- F. System Physical Properties: Provide resinous flooring system with the following minimum physical property requirements when tested according to test methods indicated:
 - 1. Compressive Strength: 5,000 psi after 7 days per ASTM C 579.
 - 2. Tensile Strength: 1,000 psi per ASTM C 307.
 - 3. Flexural Strength: 2,000 psi per ASTM C 580.
 - 4. Water Absorption: < 1% per ASTM C 413.
 - 5. Impact Resistance: > 160 in. lbs. per ASTM D 2794.
 - 6. Flammability: Class 1 per ASTM E-648.
 - 7. Hardness: .80 to .84, Shore D per ASTM D 2240.
 - 8. Flexural Modulus of Elasticity: 1.1×10^6 psi per ASTM C-580.
 - 9. Thermal Coefficient of Linear Expansion: 1.1×10^{-5} in./in.°F per ASTM C-531.

2.2 ACCESSORY MATERIALS

- A. Waterproofing Membrane: Type recommended by manufacturer for substrate and primer and body coats indicated. Formulation Description Only if application above grade Stonproof ME7. Must include texture 3 to ensure intercoat adhesion.
- B. Patching, Leveling, and Fill Material: Resinous product of or approved by resinous flooring manufacturer and recommended by manufacturer for application indicated.
- C. Joint Sealant: Type recommended or produced by resinous flooring manufacturer for type of service and joint condition indicated. Allowances should be included for Stonflex MP7 joint fill material.

PART 3 EXECUTION

3.1 PREPARATION

- A. General: Prepare and clean substrates according to resinous flooring manufacturer's written instructions for substrate indicated. Provide clean and dry substrate for resinous flooring application.
- B. Concrete Substrates: Provide sound concrete surfaces free of laitance, glaze, efflorescence, curing compounds, form-release agents, dust, dirt, grease, oil, and other contaminants incompatible with resinous flooring.
 - 1. Mechanically prepare substrates as follows:
 - a. Shot-blast surfaces with an apparatus that abrades the concrete surface, contains the dispensed shot within the apparatus, and recirculates the shot by vacuum pickup or Diamond Grind with a dust free system.
 - 2. Repair damaged and deteriorated concrete according to resinous flooring manufacturer's written recommendations.
 - 3. Verify that concrete substrates are dry.
 - a. Perform in situ probe test, ASTM F 2170. Proceed with application only after substrates do not exceed a maximum potential equilibrium relative humidity of 85 percent.
 - b. Perform anhydrous calcium chloride test, ASTM F 1869. Proceed with application only after substrates have maximum moisture-vapor-emission rate of 6 lbs. of water/1000 sq. ft. of slab in 24 hours.
- C. Use patching and fill material to fill holes and depressions in substrates according to manufacturer's written instructions.
- D. Treat control joints and other nonmoving substrate cracks to prevent cracks from reflecting through resinous flooring according to manufacturer's written recommendations. Allowances should be included for Stonflex MP7 joint fill material, and CT5 concrete crack treatment.

3.2 APPLICATION

- A. General: Apply components of resinous flooring system according to manufacturer's written instructions to produce a uniform, monolithic wearing surface of thickness indicated.

1. Coordinate application of components to provide optimum adhesion of resinous flooring system to substrate, and optimum intercoat adhesion.
2. Cure resinous flooring components according to manufacturer's written instructions. Prevent contamination during application and curing processes.
3. At substrate expansion and isolation joints, provide joint in resinous flooring to comply with resinous flooring manufacturer's written recommendations.
 - a. Apply joint sealant to comply with manufacturer's written recommendations.
- B. Apply primer where required by resinous system, over prepared substrate at manufacturer's recommended spreading rate.
- C. Integral Cove Base: Apply cove base mix to wall surfaces before applying flooring. Apply according to manufacturer's written instructions and details including those for taping, mixing, priming, troweling, sanding, of cove base. Round internal and external corners.
 1. Integral Cove Base: 5".
- D. Apply metal trowel single mortar coat in thickness indicated for flooring system. Hand or power trowel and grout to fill voids. When cured, sand to remove trowel marks and roughness.
- E. Apply topcoat(s) in number of coats indicated for flooring system and at spreading rates recommended in writing by manufacturer. (Note Stonclad G2 is an unsealed mortar system that can incorporate Stonkote, and or Stonseal, top coats)

3.3 TERMINATIONS

- A. Chase edges to "lock" the flooring system into the concrete substrate along lines of termination.
- B. Penetration Treatment: Lap and seal resinous system onto the perimeter of the penetrating item by bridging over compatible elastomer at the interface to compensate for possible movement.
- C. Trenches: Continue flooring system into trenches to maintain monolithic protection. Treat cold joints to assure bridging of potential cracks.
- D. Treat floor drains by chasing the flooring system to lock in place at point of termination.

3.4 JOINTS AND CRACKS

- A. Treat control joints to bridge potential cracks and to maintain monolithic protection.
- B. Treat cold joints and construction joints to maintain monolithic protection on horizontal and vertical surfaces as well as horizontal and vertical interfaces.
- C. Vertical and horizontal contraction and expansion joints are treated by installing backer rod and compatible sealant after coating installation is completed. Provide sealant type recommended by manufacturer for traffic conditions and chemical exposures to be encountered.

3.5 CLEANING, PROTECTING, AND CURING

- A. Cure resinous flooring materials in compliance with manufacturer's directions, taking care to prevent contamination during stages of application and prior to completion of curing process. Close area of application for a minimum of 24 hours.
- B. Protect resinous flooring materials from damage and wear during construction operation. Where temporary covering is required for this purpose, comply with manufacturer's recommendations for protective materials and method of application. General Contractor is responsible for protection.
- C. Cleaning: Remove temporary covering and clean resinous flooring just prior to final inspection. Use cleaning materials and procedures recommended by resinous flooring manufacturer. General Contractor is responsible for cleaning prior to inspection.

END OF SECTION 09 67 23