

DEPARTMENT OF HEALTH AND SOCIAL SERVICES
ANCHORAGE PIONEER HOME – PHARMACY RELOCATION
ANCHORAGE, AK

October 19, 2018

ADDENDUM NO. 2

TO: ALL PLAN HOLDERS

FROM: Mark Moon, DHSS Project Manager

SUBJECT: Extend Bid Deadline and Bidder Questions
Project # AJF 19-03C

This addendum consists of:

1. Bid Due Date Extension
2. Answers to bidder questions

Information in this addendum takes precedence over original information. All other provisions of the document remain unchanged.

Note to Bidders: Bidders are required to acknowledge this addendum on the proposal form. The following additions, corrections, and changes are hereby made to the subject invitation to bid.

Notes:

- **Bid due date has been extended from October 23, 2018 to 2:00pm October 31, 2018**

Project related questions or clarifications: Mark Moon, DHSS Project Manager at (907) 269-7812 or mark.moon@alaska.gov.

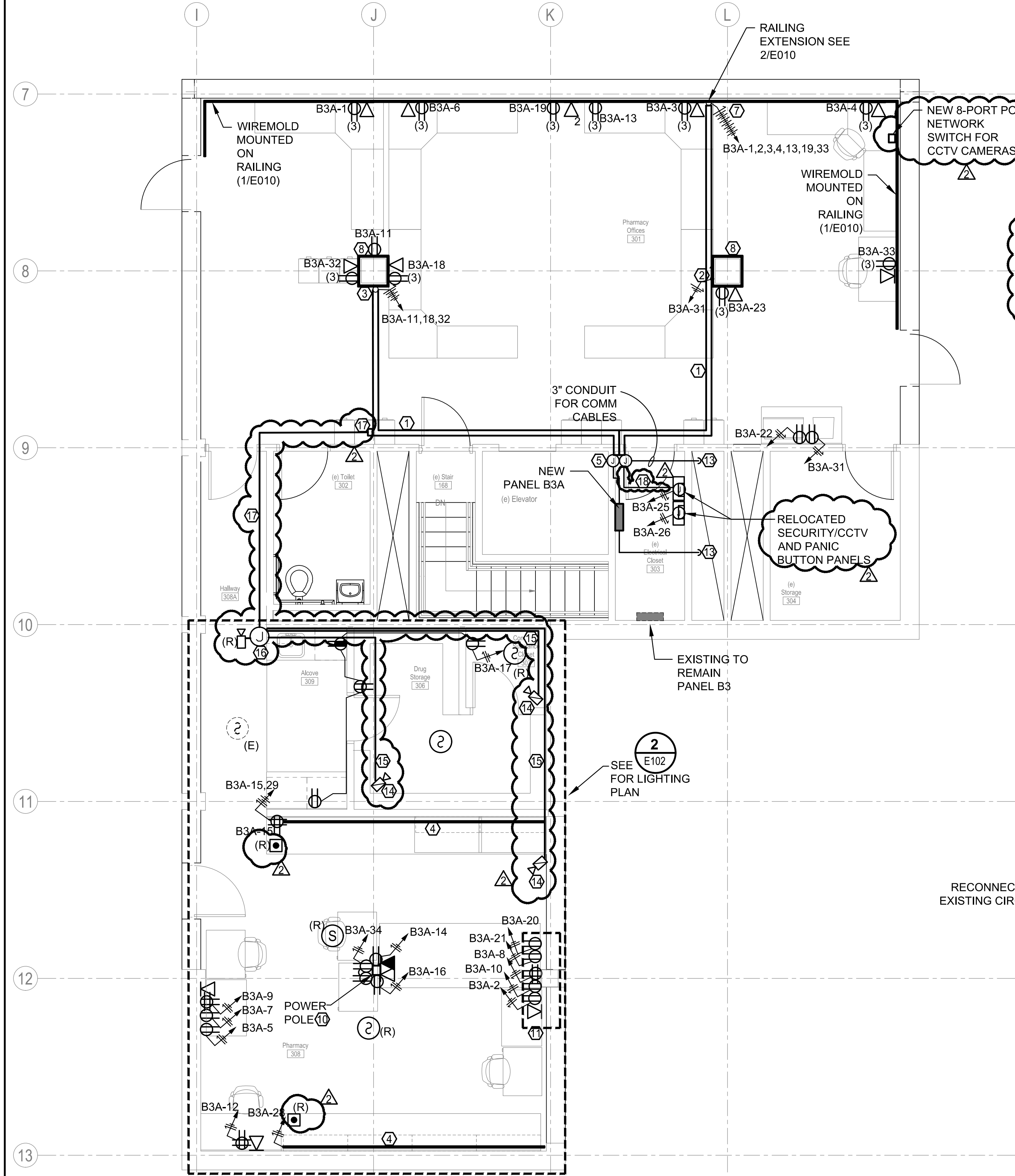
Issued by: Mark Moon, DHSS Project Manager
Issue Date: October 5, 2018

Stantec Architecture Inc.
725 East Fireweed Lane Suite 200, Anchorage AK 99503-2245
Phone: (907) 276-4245
Fax: (907) 258-4653

Anchorage Pioneer Home Pharmacy Relocation #AJF 19-03C

October 18, 2018

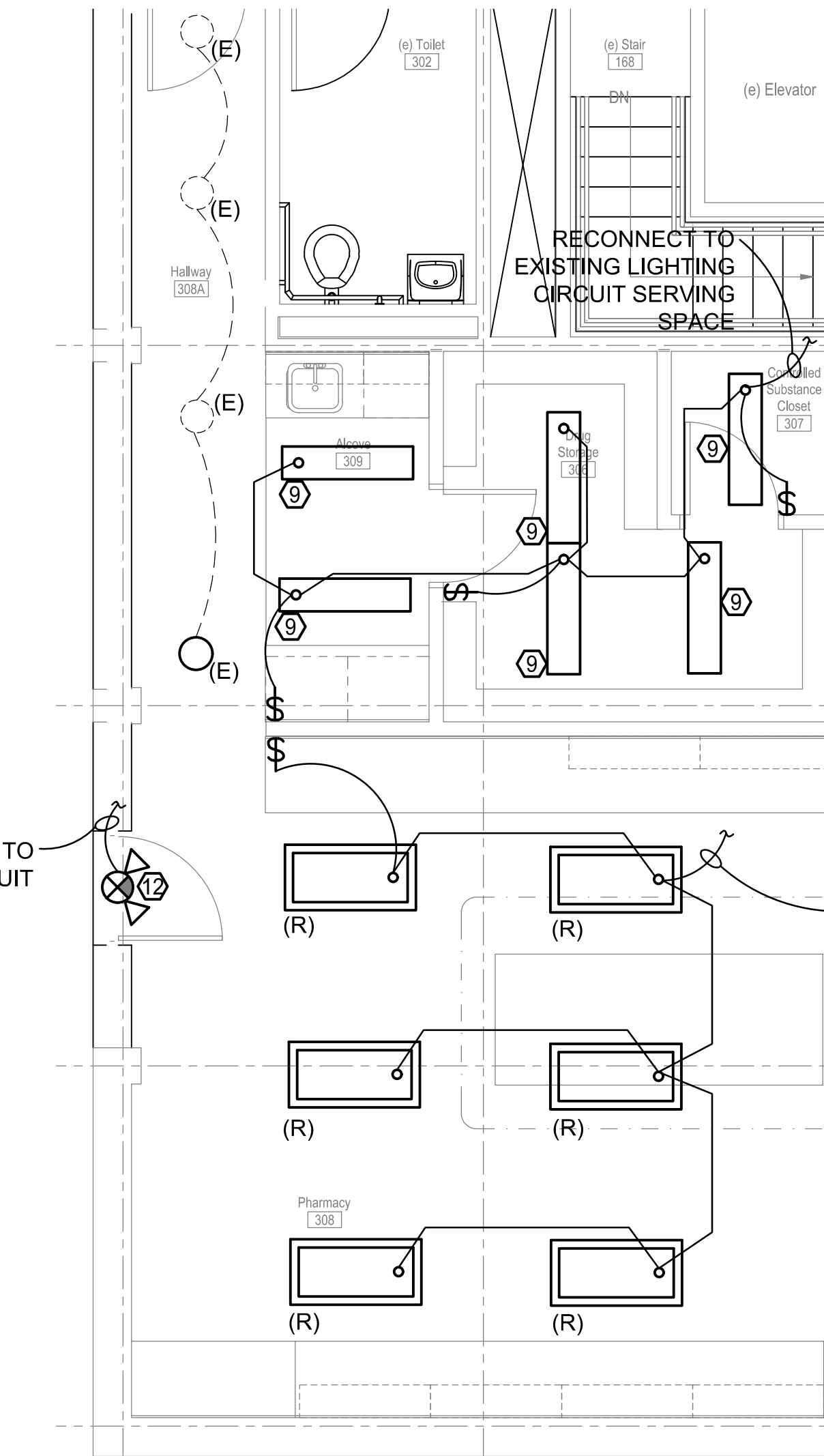
BIDDER QUESTION	DESIGNER COMMENT	DOCUMENT REFERENCE
Are security cameras included in the bid?	Security cameras are included in the scope of work. Provide (2) new and (1) relocated camera. See details and information on updated sheet E-102.	E-102
Sheet G102 note 6 lists multiple hazardous materials that the work area "may" contain. 01010-1.07 states light fixtures to be treated as positive for PCB's. Please clarify the scope of hazard abatement to be included in the base bid.	Hazmat report upcoming	
On sheet M102 detail 1, it shows the mechanical to provide a new 3/8" compressed air connection with a ball valve for the owner furnished piece of equipment. It states to connect the new air-line to the existing in the ceiling space of the floor below. Can you tell us where this existing air-line is located?	See attached as-built drawings A-7 and A-17 and highlighted information. Existing mechanical shaft can be used to direct compressed air line from basement into the new pharmacy floor. Maintain shaft rating.	A-7; A-17 (As Builts)



1
E102
NEW WORK POWER AND SIGNAL FLOOR PLAN
1/4" = 1'-0"

GENERAL NOTES:

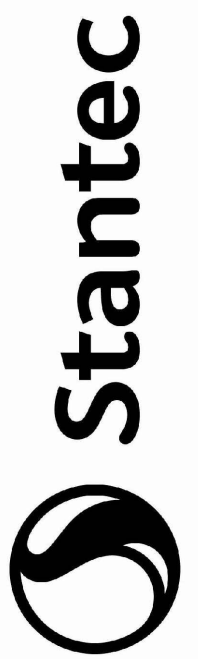
1. WHEN PROVIDING NEW ELECTRICAL DEVICES MATCH EXISTING MODELS WHERE POSSIBLE.
2. RECESS RECEPTACLES AND TELCOM OUTLETS IN NEW WALLS. PROVIDE SURFACE RACEWAY FOR INSTALLATION ON EXISTING WALLS.
3. RECONNECT FIRE ALARM AND SPEAKER DEVICES TO EXISTING SYSTEMS. REROUTE/EXTEND EXISTING CIRCUITS AS REQUIRED
4. PROVIDE WIREMOLD 4000 WHERE SHOWN ON DRAWING. ATTACH WIREMOLD TO EXISTING RAILING (SEE 1/E-010) WHERE APPLICABLE.
5. RELOCATE / REPOSITION EXISTING SURFACE MOUNTED RACEWAY ON CEILING TO ACCOMMODATE NEW WIREMOLD 4000 ROUTING.
6. ROUTE NEW TELCOM CABLES DOWN SHAFT LOCATED ADJACENT TO ELECTRICAL ROOM TO BASEMENT TELCOM EQUIPMENT. FIELD VERIFY PATH.
7. CONTRACTOR RESPONSIBLE FOR RELOCATING SECURITY/CCTV PANELS, PANIC BUTTON PANEL, PANIC BUTTONS AND CAMERA FROM BASEMENT TO NEW 3RD FLOOR PHARMACY LOCATION. CONTRACTOR TO PROVIDE CONDUIT AND CONDUCTORS FROM PANIC BUTTON LOCATIONS TO PANIC BUTTON PANEL LOCATED IN 3RD FLOOR ELECTRICAL ROOM AND CAMERA CABLES AND CONDUIT AS NOTED.



2
E102
NEW WORK LIGHTING FLOOR PLAN
1/4" = 1'-0"

SHEET NOTES:

1. ROUTE WIREMOLD 4000 ALONG NON-VAULTED PORTION OF CEILING.
2. INSTALL DIVIDED TEE IN CEILING MOUNTED WIREMOLD, ROUTE WIREMOLD 4000 DOWN COLUMN AND CONNECT TO WIREMOLD ON COLUMN
3. ROUTE WIREMOLD 4000 DOWN COLUMN AND CONNECT TO WIREMOLD ON COLUMN
4. PROVIDE WIREMOLD 4000 WITH 2 DUPLEX RECEPTACLES AND 2 RJ-45 JACKS PER FACEPLATE AT 4 FT ON CENTER (3 SETS TOTAL). MOUNT 3 FT. AFF (TO BOTTOM OF WIREMOLD)
5. SEPARATE JUNCTION BOXES FOR POWER AND COMM FOR GOING FROM CONDUIT TO WIREMOLD 4000
6. DEDICATED PHONE LINE FOR FAX MACHINE
7. ROUTE WIREMOLD DOWN NEW RAILING EXTENSION AND CONNECT TO WIREMOLD ON RAILING.
8. PROVIDE WIREMOLD 4000 AROUND COLUMN, MOUNT AT 3'-4" AFF. (TO BOTTOM OF WIREMOLD)
9. LED LIGHT 1'X4' SURFACE MOUNT WHITE WITH OCCUPANCY SENSOR - LITHONIA MODEL: WL4-40L-GZ10-LP840
10. PROVIDE POWER POLE FROM FLOOR TO CEILING LEGRAND MODEL NP800 (OR EQUAL) WITH INTEGRAL: 4 DUPLEX RECEPTACLES, 1 COMM WITH 4 PORTS (RJ-45) AND RJ-11 (FAX MACHINE).
11. SURFACE MOUNT ON COLUMN, STACK DEVICES 3 ROWS X 3 COLUMNS. MOUNT BOTTOM ROW AT 18" AFF.
12. CEILING MOUNTED EXIT SIGN/ EMERGENCY LIGHT COMBO LITHONIA MODEL: ECG LED M6
13. ROUTE CONDUITS DOWN SHAFT TO MDP AND COMM RACK IN BASEMENT APPROXIMATELY 180 FEET. SEE E400
14. CAMERA MODEL: BOSCH AUTODOME EASY II IP WITH HARD CEILING MOUNT KIT OR EQUAL. CONFIRM SUBSTITUTIONS ARE COMPATIBLE WITH EXISTING CCTV SYSTEM.
15. CONNECT CAMERAS WITH NEW CAT 5e CABLES AND ROUTE IN NEW CONDUIT ABOVE CEILING TO NEW JUNCTION BOX .
16. PROVIDE SURFACE RACEWAY JUNCTION BOX AND CONNECT ABOVE CEILING CONDUITS AND ADJACENT CAMERA WITH CAT 5e CABLES.
17. PROVIDE SURFACE RACEWAY WITH CAT 5e CABLES. ROUTE ALONG CEILING AND CONNECT WITH WIREMOLD 4000 SYSTEM. USE WIREMOLD 4000 TO ROUTE CAMERA CAT 5e CABLES TO NEW 8 PORT POE NETWORK SWITCH. LOCATED IN NORTH-EAST CORNER OF ROOM 301.
18. PROVIDE CONDUIT FROM CCTV/SECURITY PANEL TO WIREMOLD 4000. ROUTE NEW CAT 5e CABLE FROM CCTV/SECURITY PANEL TO NEW 8 PORT POE NETWORK SWITCH. CONNECTION SHALL BE USED TO VIEW CAMERAS VIA CCTV/SECURITY PANEL WEB BASED SOFTWARE.



Stantec Architecture Inc.
725 East Fireweed Lane Suite 200
Anchorage, AK 99503-2245
Tel: (907) 276-4245 • www.stantec.com

The Contractor and user must be responsible for all dimensions. DO NOT scale the drawing. The Contractor is to design and construct the project in accordance with the Stantec's standards. The Contractor is to design and construct the project in accordance with the Stantec's standards.

Consultant

NO.	REVISION	DATE	BY	APP'D
1		2018.05.31	CLP	YTY/MM/DD
2		2018.05.31	CLP	YTY/MM/DD
3		2018.05.31	CLP	YTY/MM/DD
4		2018.05.31	CLP	YTY/MM/DD
5		2018.05.31	CLP	YTY/MM/DD
6		2018.05.31	CLP	YTY/MM/DD
7		2018.05.31	CLP	YTY/MM/DD
8		2018.05.31	CLP	YTY/MM/DD
9		2018.05.31	CLP	YTY/MM/DD
10		2018.05.31	CLP	YTY/MM/DD
11		2018.05.31	CLP	YTY/MM/DD
12		2018.05.31	CLP	YTY/MM/DD
13		2018.05.31	CLP	YTY/MM/DD
14		2018.05.31	CLP	YTY/MM/DD
15		2018.05.31	CLP	YTY/MM/DD
16		2018.05.31	CLP	YTY/MM/DD
17		2018.05.31	CLP	YTY/MM/DD
18		2018.05.31	CLP	YTY/MM/DD
19		2018.05.31	CLP	YTY/MM/DD
20		2018.05.31	CLP	YTY/MM/DD
21		2018.05.31	CLP	YTY/MM/DD
22		2018.05.31	CLP	YTY/MM/DD
23		2018.05.31	CLP	YTY/MM/DD
24		2018.05.31	CLP	YTY/MM/DD
25		2018.05.31	CLP	YTY/MM/DD
26		2018.05.31	CLP	YTY/MM/DD
27		2018.05.31	CLP	YTY/MM/DD
28		2018.05.31	CLP	YTY/MM/DD
29		2018.05.31	CLP	YTY/MM/DD
30		2018.05.31	CLP	YTY/MM/DD
31		2018.05.31	CLP	YTY/MM/DD
32		2018.05.31	CLP	YTY/MM/DD
33		2018.05.31	CLP	YTY/MM/DD
34		2018.05.31	CLP	YTY/MM/DD
35		2018.05.31	CLP	YTY/MM/DD
36		2018.05.31	CLP	YTY/MM/DD
37		2018.05.31	CLP	YTY/MM/DD
38		2018.05.31	CLP	YTY/MM/DD
39		2018.05.31	CLP	YTY/MM/DD
40		2018.05.31	CLP	YTY/MM/DD
41		2018.05.31	CLP	YTY/MM/DD
42		2018.05.31	CLP	YTY/MM/DD
43		2018.05.31	CLP	YTY/MM/DD
44		2018.05.31	CLP	YTY/MM/DD
45		2018.05.31	CLP	YTY/MM/DD
46		2018.05.31	CLP	YTY/MM/DD
47		2018.05.31	CLP	YTY/MM/DD
48		2018.05.31	CLP	YTY/MM/DD
49		2018.05.31	CLP	YTY/MM/DD
50		2018.05.31	CLP	YTY/MM/DD
51		2018.05.31	CLP	YTY/MM/DD
52		2018.05.31	CLP	YTY/MM/DD
53		2018.05.31	CLP	YTY/MM/DD
54		2018.05.31	CLP	YTY/MM/DD
55		2018.05.31	CLP	YTY/MM/DD
56		2018.05.31	CLP	YTY/MM/DD
57		2018.05.31	CLP	YTY/MM/DD
58		2018.05.31	CLP	YTY/MM/DD
59		2018.05.31	CLP	YTY/MM/DD
60		2018.05.31	CLP	YTY/MM/DD
61		2018.05.31	CLP	YTY/MM/DD
62		2018.05.31	CLP	YTY/MM/DD
63		2018.05.31	CLP	YTY/MM/DD
64		2018.05.31	CLP	YTY/MM/DD
65		2018.05.31	CLP	YTY/MM/DD
66		2018.05.31	CLP	YTY/MM/DD
67		2018.05.31	CLP	YTY/MM/DD
68		2018.05.31	CLP	YTY/MM/DD
69		2018.05.31	CLP	YTY/MM/DD
70		2018.05.31	CLP	YTY/MM/DD
71		2018.05.31	CLP	YTY/MM/DD
72		2018.05.31	CLP	YTY/MM/DD
73		2018.05.31	CLP	YTY/MM/DD
74		2018.05.31	CLP	YTY/MM/DD
75		2018.05.31	CLP	YTY/MM/DD
76		2018.05.31	CLP	YTY/MM/DD
77		2018.05.31	CLP	YTY/MM/DD
78		2018.05.31	CLP	YTY/MM/DD
79		2018.05.31	CLP	YTY/MM/DD
80		2018.05.31	CLP	YTY/MM/DD
81		2018.05.31	CLP	YTY/MM/DD
82		2018.05.31	CLP	YTY/MM/DD
83		2018.05.31	CLP	YTY/MM/DD
84		2018.05.31	CLP	YTY/MM/DD
85		2018.05.31	CLP	YTY/MM/DD
86		2018.05.31	CLP	YTY/MM/DD
87		2018.05.31	CLP	YTY/MM/DD
88		2018.05.31	CLP	YTY/MM/DD
89		2018.05.31	CLP	YTY/MM/DD
90		2018.05.31	CLP	YTY/MM/DD
91		2018.05.31	CLP	YTY/MM/DD
92		2018.05.31	CLP	YTY/MM/DD
93		2018.05.31	CLP	YTY/MM/DD
94		2018.05.31	CLP	YTY/MM/DD
95		2018.05.31	CLP	YTY/MM/DD
96		2018.05.31	CLP	YTY/MM/DD
97		2018.05.31	CLP	YTY/MM/DD
98		2018.05.31	CLP	YTY/MM/DD
99		2018.05.31	CLP	YTY/MM/DD
100		2018.05.31	CLP	YTY/MM/DD

NO.	REVISION	DATE	BY	APP'D
1		2018.05.31	CLP	YTY/MM/DD
2		2018.05.31	CLP	YTY/MM/DD
3		2018.05.31	CLP	YTY/MM/DD
4		2018.05.31	CLP	YTY/MM/DD
5		2018.05.31	CLP	YTY/MM/DD
6		2018.05.31	CLP	YTY/MM/DD
7		2018.05.31	CLP	YTY/MM/DD
8		2018.05.31	CLP	YTY/MM/DD
9		2018.05.31	CLP	YTY/MM/DD
10		2018.05.31	CLP	YTY/MM/DD
11		2018.05.31	CLP	YTY/MM/DD
12		2018.05.31	CLP	YTY/MM/DD
13		2018.05.31	CLP	YTY/MM/DD
14		2018.05.31	CLP	YTY/MM/DD
15		2018.05.31	CLP	YTY/MM/DD
16		2018.05.31	CLP	YTY/MM/DD
17		2018.05.31	CLP	YTY/MM/DD
18		2018.05.31	CLP	YTY/MM/DD
19		2018.05.31	CLP	YTY/MM/DD
20		2018.05.31	CLP	YTY/MM/DD
21		2018.05.31	CLP	YTY/MM/DD
22		2018.05.31	CLP	YTY/MM/DD
23		2018.05.31	CLP	YTY/MM/DD
24		2018.05.31	CLP	YTY/MM/DD
25		2018.05.31	CLP	YTY/MM/DD
26		2018.05.31	CLP	YTY/MM/DD
27		2018.05.31	CLP	YTY/MM/DD
28		2018.05.31	CLP	YTY/MM/DD
29		2018.05.31	CLP	YTY/MM/DD
30		2018.05.31	CLP	YTY/MM/DD
31		2018.05.31	CLP	YTY/MM/DD
32		2018.05.31	CLP	YTY/MM/DD
33		2018.05.31	CLP	YTY/MM/DD
34		2018.05.31	CLP	YTY/MM/DD
35		2018.05.31	CLP	YTY/MM/DD
36		2018.05.31	CLP	YTY/MM/DD
37		2018.05.31	CLP	YTY/MM/DD
38		2018.05.31	CLP	YTY/MM/DD
39		2018.05.31	CLP	YTY/MM/DD
40		2018.05.31	CLP	YTY/MM/DD
41		2018.05.31	CLP	YTY/MM/DD
42		2018.05.31	CLP	YTY/MM/DD
43		2018.05.31	CLP	YTY/MM/DD
44		2018.05.31	CLP	YTY/MM/DD
45		2018.05.31	CLP	YTY/MM/DD
46		2018.05.31	CLP	YTY/MM/DD
47		2018.05.31	CLP	YTY/MM/DD
48		2018.05.31	CLP	YTY/MM/DD
49		2018.05.31	CLP	YTY/MM/DD
50		2018.05.31	CLP	YTY/MM/DD
51		2018.05.31	CLP	YTY/MM/DD
52		2018.05.31	CLP	YTY/MM/DD
53		2018.05.31	CLP	YTY/MM/DD
54		2018.05.31	CLP	YTY/MM/DD
55		2018.05.31	CLP	YTY/MM/DD
56		2018.05.31	CLP	YTY/MM/DD
57		2018.05.31	CLP	YTY/MM/DD
58		2018.05.31	CLP	YTY/MM/DD
59		2018.05.31	CLP	YTY/MM/DD
60		2018.05.31	CLP	YTY/MM/DD
61		2018.05.31	CLP	YTY/MM/DD
62		2018.05.31	CLP	YTY/MM/DD
63		2018.05.31	CLP	YTY/MM/DD
64		2018.05.31	CLP	YTY/MM/DD
65		2018.05.31	CLP	YTY/MM/DD
66		2018.05.31	CLP	YTY/MM/DD
67		2018.05.31	CLP	YTY/MM/DD
68		2018.05.31	CLP	YTY/MM/DD
69		2018.05.31	CLP	YTY/MM/DD
70		2018.05.31	CLP	YTY/MM/DD
71		2018.05.31	CLP	YTY/MM/DD
72		2018.05.31	CLP	YTY/MM/DD
73		2018.05.31	CLP	YTY/MM/DD
74		2018.05.31	CLP	YTY/MM/DD
75		2018.05.31	CLP	YTY/MM/DD
76		2018.05.31	CLP	YTY/MM/DD
77		2018.05.31	CLP	YTY/MM/DD
78		2018.05.31	CLP	YTY/MM/DD
79		2018.05.31	CLP	YTY/MM/DD
80		2018.05.31	CLP	YTY/MM/DD
81		2018.05.31	CLP	YTY/MM/DD
82		2018.05.31	CLP	YTY/MM/DD
83		2018.05.31	CLP	YTY/MM/DD
84		2018.05.31	CLP	YTY/MM/DD
85		2018.05.31	CLP	YTY/MM/DD
86		2018.05.31	CLP	YTY/MM/DD
87		2018.05.31	CLP	YTY/MM/DD
88		2018.05.31	CLP	YTY/MM/DD
89		2018.05.31	CLP	YTY/MM/DD
90		2018.05.31	CLP	YTY/MM/DD
91		2018.05.31	CLP	YTY/MM/DD
92		2018.05.31	CLP	YTY/MM/DD
93		2018.05.31	CLP	YTY/MM/DD
94		2018.05.31	CLP	YTY/MM/DD
95		2018.05.31	CLP	YTY/MM/DD
96		2018.05.31	CLP	YTY/MM/DD
97		2018.05.31	CLP	YTY/MM/DD
98		2018.05.31	CLP	YTY/MM/DD
99		2018.05.31	CLP	YTY/MM/DD
100		2018.05.31	CLP	YTY/MM/DD

Permit/Seal



Client/Project
Department of
Health & Social
Services
Anchorage Pioneer
Home Pharmacy
Relocation
923 W 11th Ave.
Anchorage, AK 99501

Project No.: 204607100

File Name: N/A

Scale: 1/4" = 1'-0"

CLR	CLR	LPS	2018.05.31
Dwn.	Dsgn.	Chkd.	YYYY.MM.DD

Title

NEW WORK
ELECTRICAL PLAN

Revision:

Drawing No.

E102



MAYNARD AND PRITCH
ARCHITECTURE - PLANNING ECONOMICS
746 F St. Anchorage, AK 99501 (907) 272-5455

ANCHORAGE PIONEER HOME ADDITION

PHASE IV

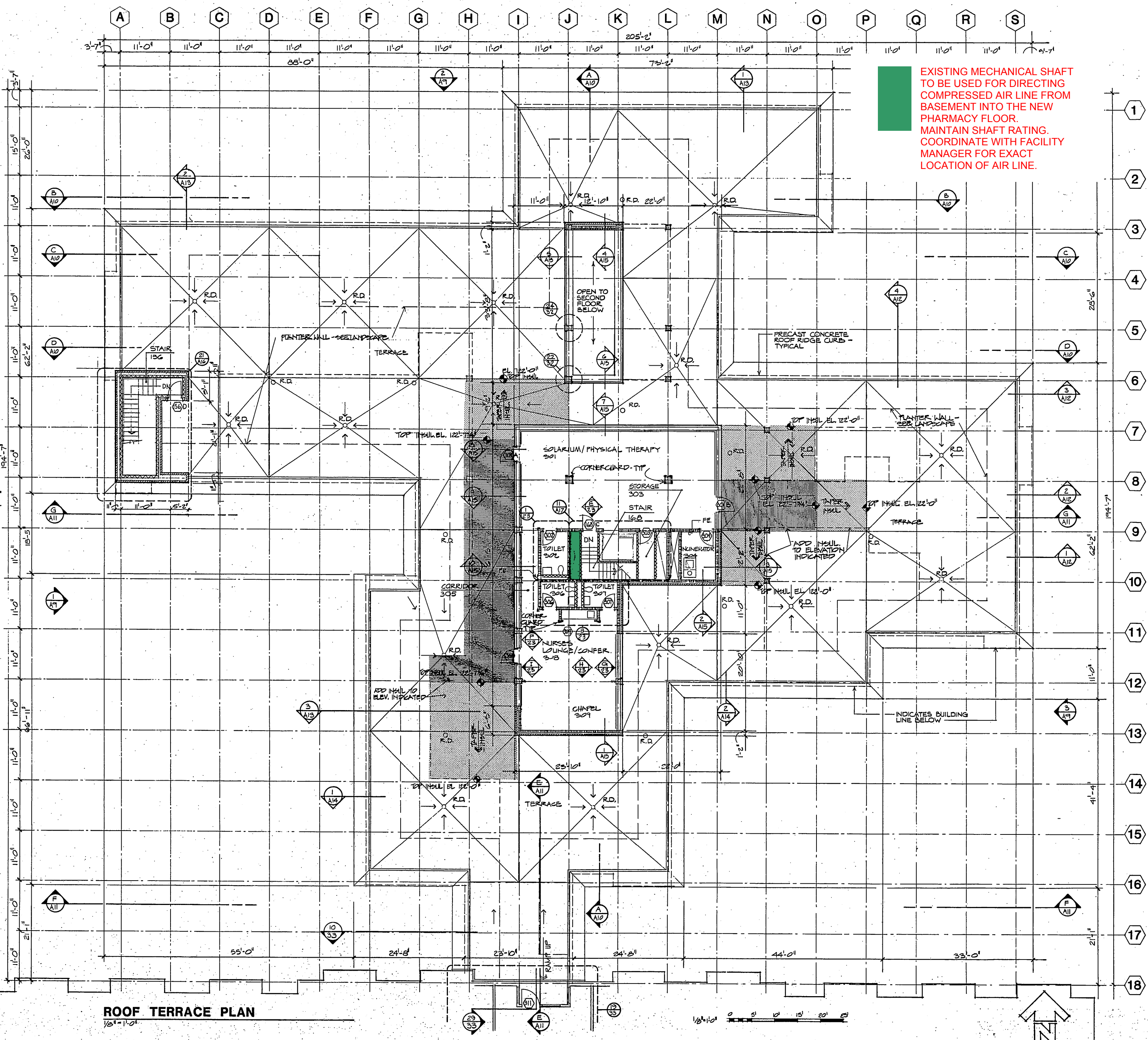
ROOF TERRACE PLAN

REVISIONS

DRAWN BY GPK/C.M.
CHECKED BY AK
DATE JUNE 23, 1980
JOB NO. 7909
SHEET NO. **A-7**
OF

PARTITION TYPES

	1-1/2"
	1-3/4"
	1'-15/16"
	1'-31/16"
	1-3/4"
	1-1/2"
	1'-15/16"
	1'-15/16"
	1-1/2"
	1'-0"
	1'-0"
	1'-0"
	4-7/8"
	4-7/8"
	4-7/8"
	VARIES



ROOF TERRACE PLAN
1/8" = 1'-0"

