

DRAWING INDEX

SHEET NUMBER	SHEET NAME
G100	Base Bid Itemized Scope of Work
G101	Base Bid Hardware Schedule
G102	Base Bid Hardware Schedule
G103	Base Bid Hardware Schedule & Add. Alt. Bid Scope of Work
G104	Add. Alt. Bid Hardware Schedule
A1.0	Entry/Exit Door Plan – Demolition Work
A1.1	Entry/Exit Door Plan – New Work
A2.0	Aluminum Curtainwall Elevation
A3.0	Exterior Door Elevation – Demolition Work
A3.1	Vestibule Door Elevation – Demolition Work
A3.2	Exterior Door Elevation – New Work
A3.3	Vestibule Door Elevation – New Work

BASE BID: ITEMIZED SCOPE OF DEMO WORK

- DOOR 101C, 101E, 101F, 101G, 101H:** Remove Floor Stops.
- DOORS 101E and 101G:** Remove Pull Handles and Pushbars
- DOORS 101F and 101H:** Remove Pushbars, cover attachment holes
- DOORS 101E and 101F:** Salvage ADA Button from center mullion for reuse on east side of mullion.
- DOOR 101A, 101B, 101C, 101D:** Remove "DO NOT ENTER" lettering
- DOOR 101E, 101F, 101G, 101H:** Remove "ENTRANCE" lettering
- DOOR 101B, 101D:** Remove coverplates
- DOOR 101F, 101H:** Salvage Pull Handles for reuse on Doors 101B and 101D
- DOOR 101A, 101C:** Remove Exterior Cylinder Trim
- DOOR 101E, 101G:** Remove Deadbolt Lock

BASE BID: ITEMIZED SCOPE OF NEW WORK

- DOORS 101E, 101F, 101G, 101H:** Reverse the door swings. Modify header and jamb frame as needed to accept reversed hardware (i.e. closers). Relocate stops on aluminum frame to work with reversed swing.
- DOOR 101F, 101H:** Provide new Floor Stops on reversed swing side of doors.
- DOOR 101C:** Provide new U-Shaped Bollard 36"L x 36"H x 4.5"Dia. with Floor stop mounted on door side of bollard and ADA Button mounted on west top corner as needed for access.
- DOOR 101D:** Provide new ADA Button on new Aluminum curtain wall in vestibule to operate 101D. Locate button in compliance with ADAAG heights and clearances.
- DOORS 101E and 101F:** Relocate ADA Buttons to east side of mullion for exiting. Provide coverplate for exposed hole after button removal.
- DOOR 101E, 101G:** Provide new Overhead Stops to allow reversed swing of doors.
- DOOR 101A, 101B:** Provide new Cylinder Trim with Lever and Rim Cylinder on exterior face of doors
- DOOR 101E, 101G:** Provide new Exit Device and Mortise Cylinder on east (vestibule) face of doors, Cylinder Trim and Rim Cylinder on exterior face of doors.
- DOOR 101C:** Modify Aluminum Frame Header for surface mount application of auto door opener.
- DOOR 101A, 101B, 101C, 101D:** Provide new "ENTRANCE" lettering on west face of doors.
- DOOR 101E, 101G:** Provide new "EXIT ONLY" lettering on west face of doors.
- DOOR 101F, 101H:** Provide new "NO RE-ENTRY" lettering on west face of doors.
- DOOR 101F, 101H:** Provide new Pushplates on east face of doors.
- DOOR 101B, 101D:** Relocate Pull Handles from Doors 101F and 101H.
- ALUMINUM CURTAINWALL:** Provide new curtainwall as shown on A1.1 and A2.0 in Entry Vestibule.

BASE BID HARDWARE SCHEDULE

- Existing Hardware to remain is shown in black text.
- Hardware to be removed and replaced is shown struck through.
- New hardware required in Base Bid shown in Blue and underlined
- Relocated hardware required in Base Bid shown in Green and underlined
- All new hardware finish to be US10B or similar

DOOR 101A

Pivot Hinges:	Rixson Firemark Center Hung Pivot Set 370
Door Closer:	LCN 2010 Series Closer
Jamb Weatherstrip:	CMI Resilient EPDM Elast. installed in Extruded Pocket
Top Weatherstrip:	Similar to Pemko 18100 NB Brush Seal
Interior Side Exit Device:	Von Duprin 9800 Series Concealed Vertical Rod Device
Exterior Side Exit Device:	Von Duprin 98L Cylinder Trim/Less Lever US10B <u>Von Duprin 996L Cylinder Trim with Lever, w/IC Rim Cylinder</u>
Threshold:	National Guard Products Half Saddle Threshold similar to 323 DKB
Floor Stop:	Similar to Trimco 1211 Universal Dome Stop
Magnetic Door Position Switch:	Not used
Exterior Side Lettering:	"DO NOT ENTER" <u>"ENTRANCE"</u>

DOOR 101B

Pivot Hinges:	Rixson Firemark Center Hung Pivot Set 370
Door Closer:	LCN 2010 Series Closer
Jamb Weatherstrip:	CMI Resilient EPDM Elast. installed in Extruded Pocket
Push Bar:	Similar to Rockwood 47-PB in US10B
Cover Plate:	Similar to Rockwood 3"x12" Plate in US10B
<u>Pull Bar from Door 101F:</u>	<u>Similar to Rockwood 102 x 70B in US10B</u>
Floor Stop:	Similar to Trimco 1211 Universal Dome Stop
Vestibule Side Lettering:	"DO NOT ENTER" <u>"ENTRANCE"</u>

DOOR 101C

Pivot Hinges:	Rixson Firemark Center Hung Pivot Set 370
Jamb Weatherstrip:	CMI Resilient EPDM Elast. installed in Extruded Pocket
Top Weatherstrip:	Similar to Pemko 18100 NB Brush Seal
Interior Side Exit Device:	Von Duprin 9800 Series Concealed Vertical Rod Device
Exterior Side Exit Device:	Von Duprin 98L Cylinder Trim/Less Lever US10B <u>Von Duprin 996L Cylinder Trim with Lever, w/IC Rim Cylinder</u>
Swinging Door Operator:	Record Surface Mount Auto Opener
Interior Auto Door Operator:	ADA Button compatible with existing Operator
<u>Exterior Auto Door Operator:</u>	<u>ADA Button compatible with existing Operator and appropriate for installation on 4.5"Dia. bollard</u>
Threshold:	National Guard Products Half Saddle Threshold similar to 323 DKB
Floor Stop:	Similar to Trimco 1211 Universal Dome Stop
<u>Door Stop:</u>	<u>Heavy Duty Rubber Door Stop appropriate to install on 4.5"Dia. bollard</u>
<u>Bollard:</u>	<u>U-shaped Bollard 36"L x 36"H x 4.5"Dia. prepped to accommodate door stop and new Handicapped button</u>
Exterior Side Lettering:	"DO NOT ENTER" <u>"ENTRANCE"</u>

DOOR 101D

Pivot Hinges:	Rixson Firemark Center Hung Pivot Set 370
Jamb Weatherstrip:	CMI Resilient EPDM Elast. installed in Extruded Pocket
Push Bar:	Similar to Rockwood 47-PB in US10B
Cover Plate:	Similar to Rockwood 3"x12" Plate in US10B
<u>Pull Bar from Door 101H:</u>	<u>Similar to Rockwood 102 x 70B in US10B</u>
Swinging Door Operator	Besam, Inc. Swingmaster 400 Series
Auto Entrance Door Operator:	ADA Button compatible with existing Operator
Floor Stop:	Similar to Trimco 1211 Universal Dome Stop
Vestibule Side Lettering:	"DO NOT ENTER" <u>"ENTRANCE"</u>

DOOR 101E

Pivot Hinges:	Rixson Firemark Center Hung Pivot Set 370
Jamb Weatherstrip:	CMI Resilient EPDM Elast. installed in Extruded Pocket
Top Weatherstrip:	Similar to Pemko 18100 NB Brush Seal
Push Bar:	Similar to Rockwood 47-PB in US10B
Pull Bar:	Similar to Rockwood 102 x 70B in US10B
<u>Interior Side Exit Device:</u>	<u>Von Duprin 98 Exit Device with Mortise Cylinder</u>
<u>Exterior Side Exit Device:</u>	<u>Von Duprin 996L Cylinder Trim, NO Lever, with IC Rim Cylinder</u>
Deadbolt Lock:	Corbin-Russwin Deadbolt Lock Satin Bronze
Swinging Door Operator	Besam, Inc. Swingmaster 400 Series
<u>Auto Door Operator:</u>	<u>ADA Button compatible with existing Operator</u> <u>Relocate from Exterior Side, to Interior Side of Mullion</u>
Threshold:	National Guard Products Half Saddle Threshold similar to 323 DKB
Magnetic Door Position Switch:	Not used
Floor Stop:	Similar to Trimco 1211 Universal Dome Stop
<u>Overhead Stop:</u>	<u>Heavy Duty Overhead Stop compatible w/existing Door Operator</u>
Exterior Side Lettering:	"ENTRANCE" <u>"EXIT ONLY"</u>

DOOR 101F

Pivot Hinges:	Rixson Firemark Center Hung Pivot Set 370
Jamb Weatherstrip:	CMI Resilient EPDM Elast. installed in Extruded Pocket
Push Bar:	Similar to Rockwood 47-PB in US10B
<u>Pull Bar – Relocate to 101B:</u>	<u>Similar to Rockwood 102 x 70B in US10B</u>
<u>Push Plate:</u>	<u>Similar to Rockwood 3"x12" Plate in US10B</u>
Swinging Door Operator	Besam, Inc. Swingmaster 400 Series
<u>Auto Door Operator:</u>	<u>ADA Button compatible with existing Operator</u> <u>Relocate from Vestibule Side, to Lobby Side of Mullion</u>
Floor Stop:	Similar to Trimco 1211 Universal Dome Stop - <u>Replace w/same in new swing location</u>
Vestibule Side Lettering:	"ENTRANCE" <u>"NO RE-ENTRY"</u>
Lobby Side Lettering:	<u>"EXIT ONLY"</u>

DOOR 101G

Pivot Hinges:	Rixson Firemark Center Hung Pivot Set 370
Door Closer:	LCN 2014 Closer
Jamb Weatherstrip:	CMI Resilient EPDM Elast. installed in Extruded Pocket
Top Weatherstrip:	Similar to Pemko 18100 NB Brush Seal
Push Bar:	Similar to Rockwood 47-PB in US10B
Pull Bar:	Similar to Rockwood 102 x 70B in US10B
<u>Interior Side Exit Device:</u>	<u>Von Duprin 98 Exit Device with Mortise Cylinder</u>
<u>Exterior Side Exit Device:</u>	<u>Von Duprin 996L Cylinder Trim, NO Lever, with IC Rim Cylinder</u>
Deadbolt Lock:	Corbin Russwin Deadbolt Lock Satin Bronze
Threshold:	National Guard Products Half Saddle Threshold similar to 323 DKB
Magnetic Door Position Switch:	Not used
Floor Stop:	Similar to Trimco 1211 Universal Dome Stop
<u>Overhead Stop:</u>	<u>Heavy Duty Overhead Stop</u>
Exterior Side Lettering:	"ENTRANCE" <u>"EXIT ONLY"</u>

DOOR 101H

Pivot Hinges:	Rixson Firemark Center Hung Pivot Set 370
Door Closer:	LCN 2010 Series Closer
Jamb Weatherstrip:	CMI Resilient EPDM Elast. installed in Extruded Pocket
Push Bar:	Similar to Rockwood 47-PB in US10B
<u>Pull Bar – Relocate to 101D:</u>	<u>Similar to Rockwood 102 x 70B in US10B</u>
<u>Push Plate:</u>	<u>Similar to Rockwood 3"x12" Plate in US10B</u>
Floor Stop:	Similar to Trimco 1211 Universal Dome Stop - <u>Replace w/same in new swing location</u>
Vestibule Side Lettering:	"ENTRANCE" <u>"NO RE-ENTRY"</u>
Lobby Side Lettering:	<u>"EXIT ONLY"</u>

ADDITIVE ALTERNATE BID: ITEMIZED SCOPE OF WORK**Reference Hardware Schedule for Product information**

- DOORS 101A, 101B, 101C, 101D, 101E, 101F, 101G, 101H:** Replace existing pivot hinges and replace with newly specified Center Pivot Hinges.
- DOORS 101A, 101B, 101H:** Remove existing Closers and replace with newly specified closers.
- DOORS 101A, 101B, 101C, 101D, 101E, 101F, 101G, 101H:** Provide newly specified kickplates.
- DOORS 101A, 101C, 101E, 101G:** Remove existing door bottoms and replace with newly specified brush weatherstripping.
- DOORS 101A & 101C:** Remove existing interior side exit devices and replace with newly specified interior side exit devices w/keyed cylinder dogging, and mortise cylinders.
- DOORS 101D, 101E, 101F:** Remove existing Besam swinging door operators and replace with new Record Surface Mounted auto openers. Modify frame header for surface mounted application.

ADDITIVE ALTERNATE BID HARDWARE SCHEDULE

- Hardware to be removed and replaced is shown struck through.
- New hardware required in Additive Alternate Bid shown in Blue and underlined
- All new hardware finish to be US10B or similar

DOOR 101A

Pivot Hinges:

~~Rixson Center Hung Pivot Set 370~~ – [Replace w/Center Pivot Hinges](#)

Door Closer:

~~LCN 2010 Series Closer~~ – [Replace with LCN 2014 Closer](#)[Kickplate:](#)[Kickplate – 12.5 x 35.5](#)

Top Weatherstrip:

~~Similar to Pemko 18100 NB Brush Seal~~ – [Replace with same](#)

Interior Side Exit Device:

~~Von Duprin 9800 Series Concealed Vertical Rod Device~~[Von Duprin 98 Concealed Vertical Rod Device w/keyed I/C mortise cylinder dogging](#)**DOOR 101B**

Pivot Hinges:

~~Rixson Center Hung Pivot Set 370~~ – [Replace w/Center Pivot Hinges](#)

Door Closer:

~~LCN 2010 Series Closer~~ – [Replace with LCN 2014 Closer](#)[Kickplate:](#)[Kickplate – 12.5 x 35.5](#)**DOOR 101C**

Pivot Hinges:

~~Rixson Center Hung Pivot Set 370~~ – [Replace w/Center Pivot Hinges](#)[Kickplate:](#)[Kickplate – 12.5 x 35.5](#)

Top Weatherstrip:

~~Similar to Pemko 18100 NB Brush Seal~~ – [Replace with same](#)

Interior Side Exit Device:

~~Von Duprin 9800 Series Concealed Vertical Rod Device~~ [Replace with Von Duprin 98 Concealed Vertical Rod Device w/keyed I/C mortise cylinder dogging](#)**DOOR 101D**

Pivot Hinges:

~~Rixson Center Hung Pivot Set 370~~ – [Replace w/Center Pivot Hinges](#)[Kickplate:](#)[Kickplate – 12.5 x 35.5](#)

Swinging Door Operator

~~Besam, Inc. Swingmaster 400 Series~~ [replace with Record Surface mount Auto Opener \(modify frame as needed\)](#)**DOOR 101E**

Pivot Hinges:

~~Rixson Center Hung Pivot Set 370~~ – [Replace w/Center Pivot Hinges](#)[Kickplate:](#)[Kickplate – 12.5 x 35.5](#)

Top Weatherstrip:

~~Similar to Pemko 18100 NB Brush Seal~~ – [Replace with same](#)

Swinging Door Operator

~~Besam, Inc. Swingmaster 400 Series~~ [replace with Record Surface mount Auto Opener \(modify frame as needed\)](#)**DOOR 101F**

Pivot Hinges:

~~Rixson Center Hung Pivot Set 370~~ – [Replace w/Center Pivot Hinges](#)[Kickplate:](#)[Kickplate – 12.5 x 35.5](#)

Swinging Door Operator

~~Besam, Inc. Swingmaster 400 Series~~ [replace with Record Surface mount Auto Opener \(modify frame as needed\)](#)**DOOR 101G**

Pivot Hinges:

~~Rixson Center Hung Pivot Set 370~~ – [Replace w/Center Pivot Hinges](#)[Kickplate:](#)[Kickplate – 12.5 x 35.5](#)

Top Weatherstrip:

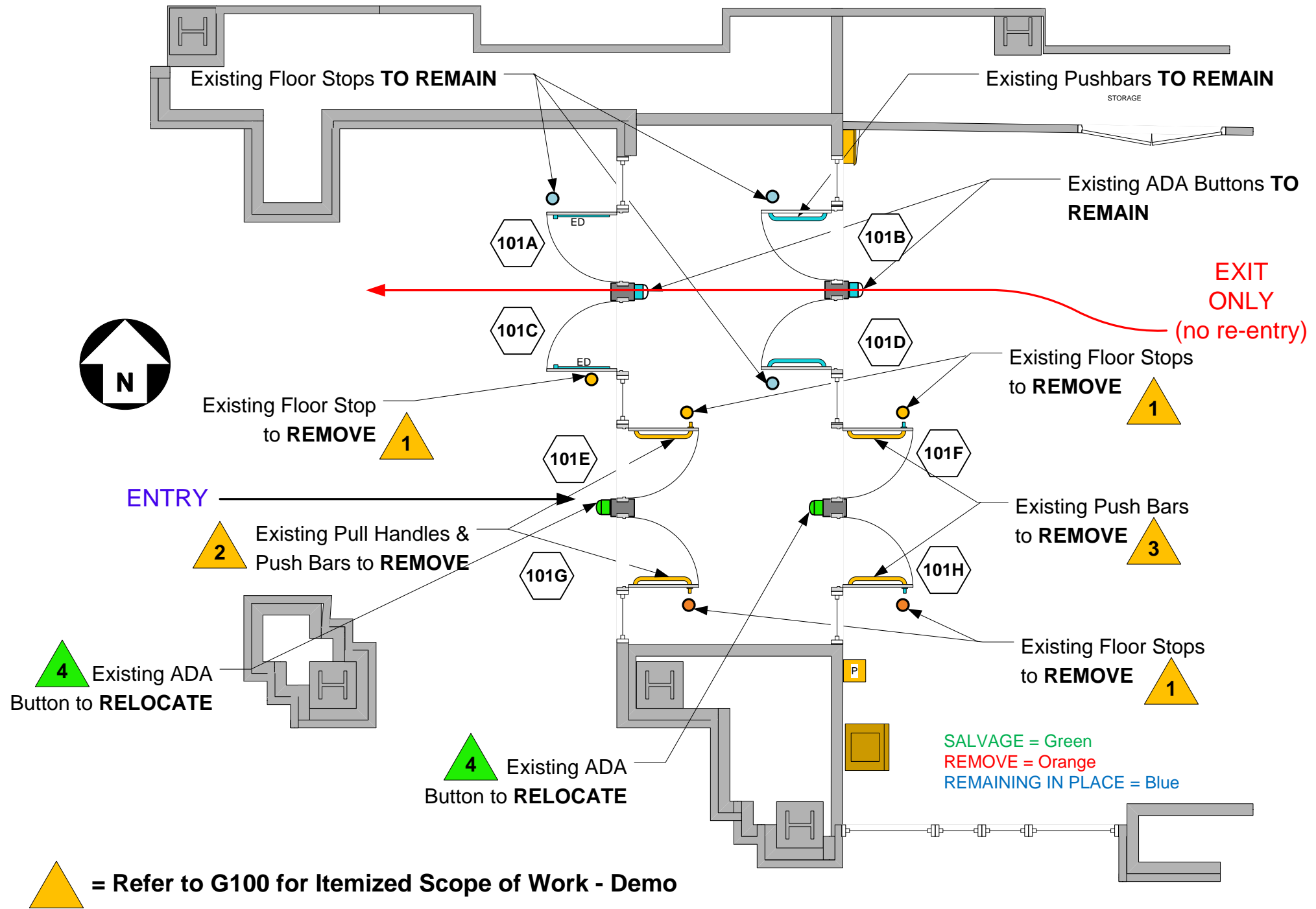
~~Similar to Pemko 18100 NB Brush Seal~~ – [Replace with same](#)**DOOR 101H**

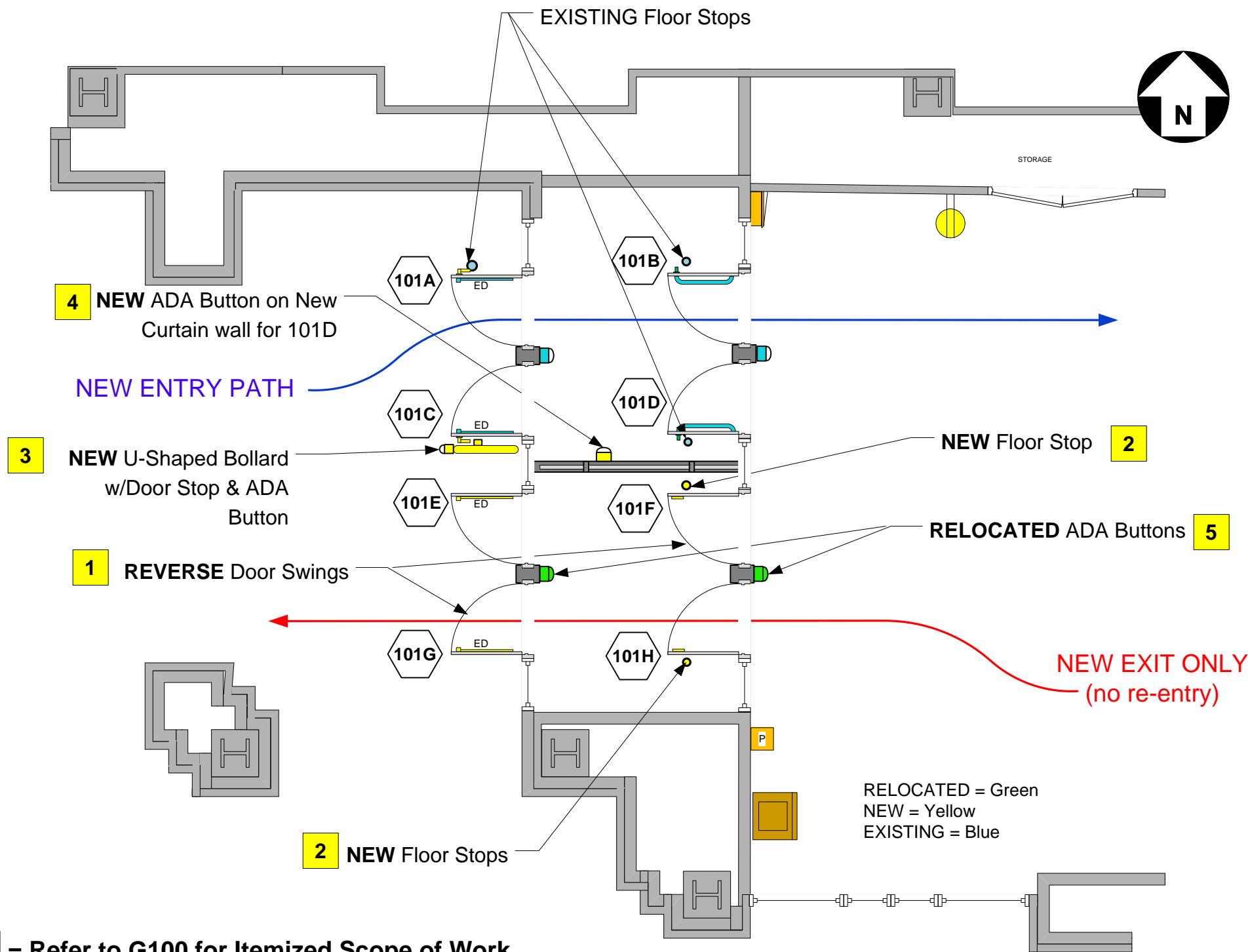
Pivot Hinges:

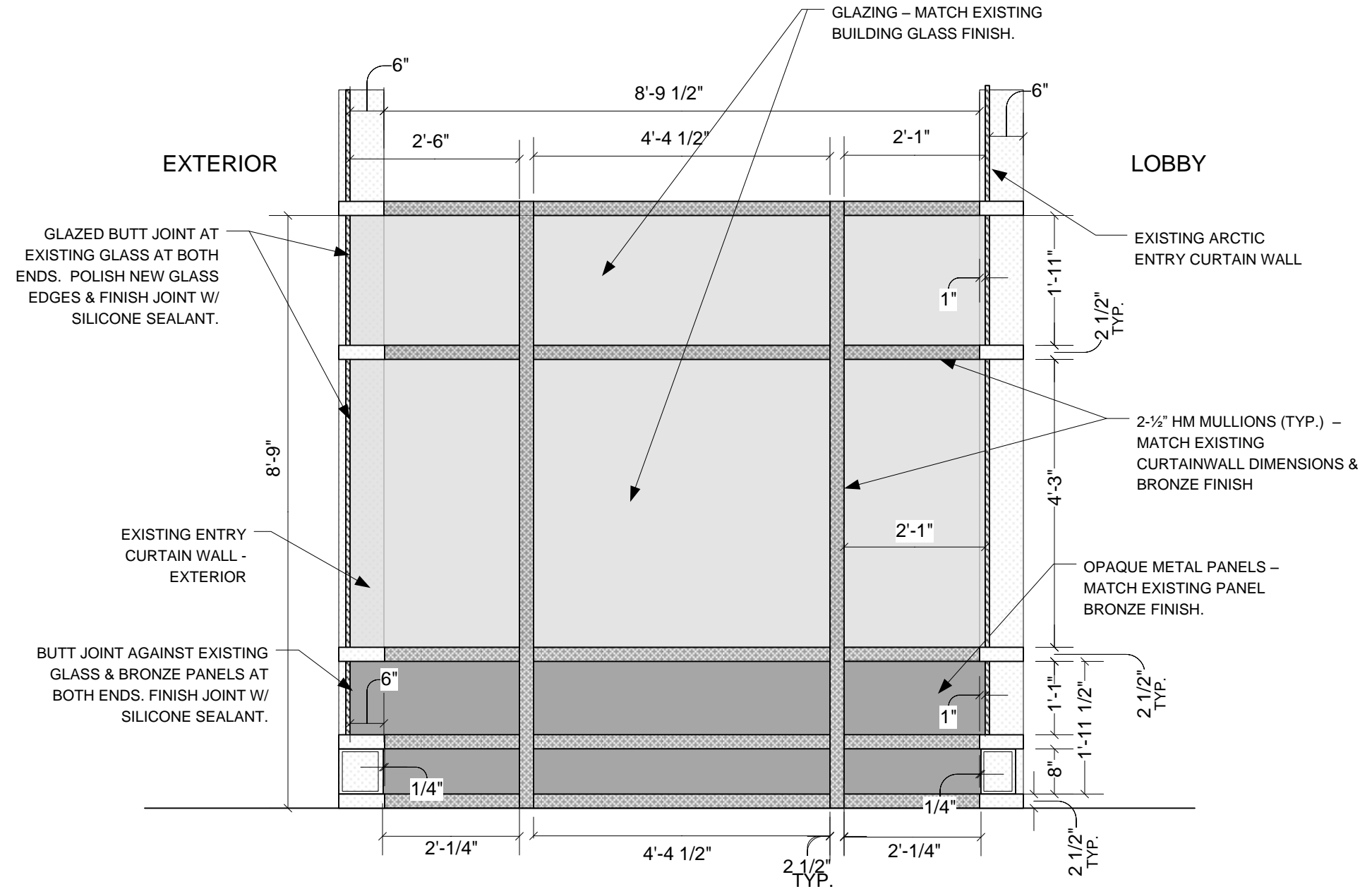
~~Rixson Center Hung Pivot Set 370~~ – [Replace w/Center Pivot Hinges](#)

Door Closer:

~~LCN 2010 Series Closer~~ – [Replace with LCN 2014 Closer](#)[Kickplate:](#)[Kickplate – 12.5 x 35.5](#)



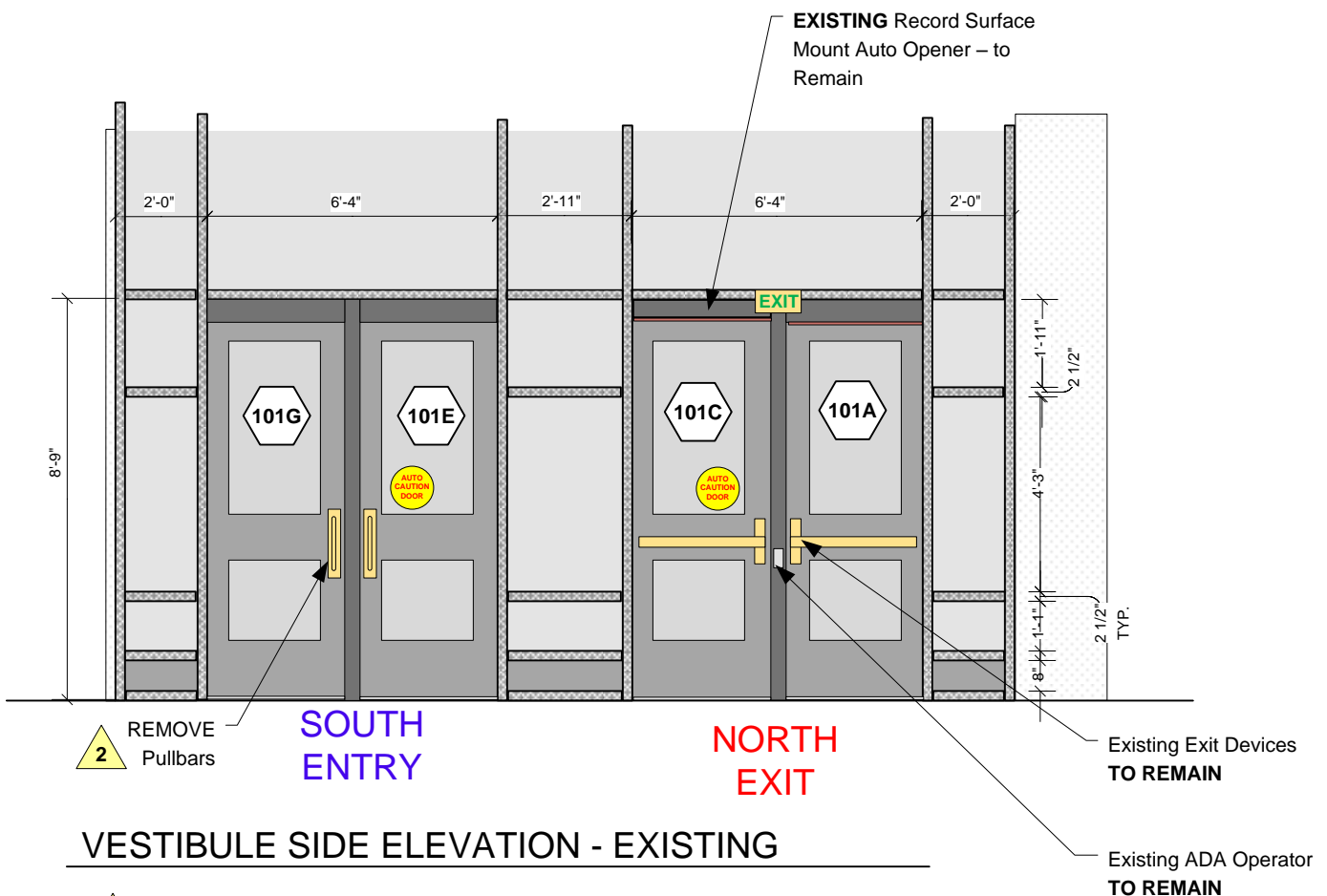
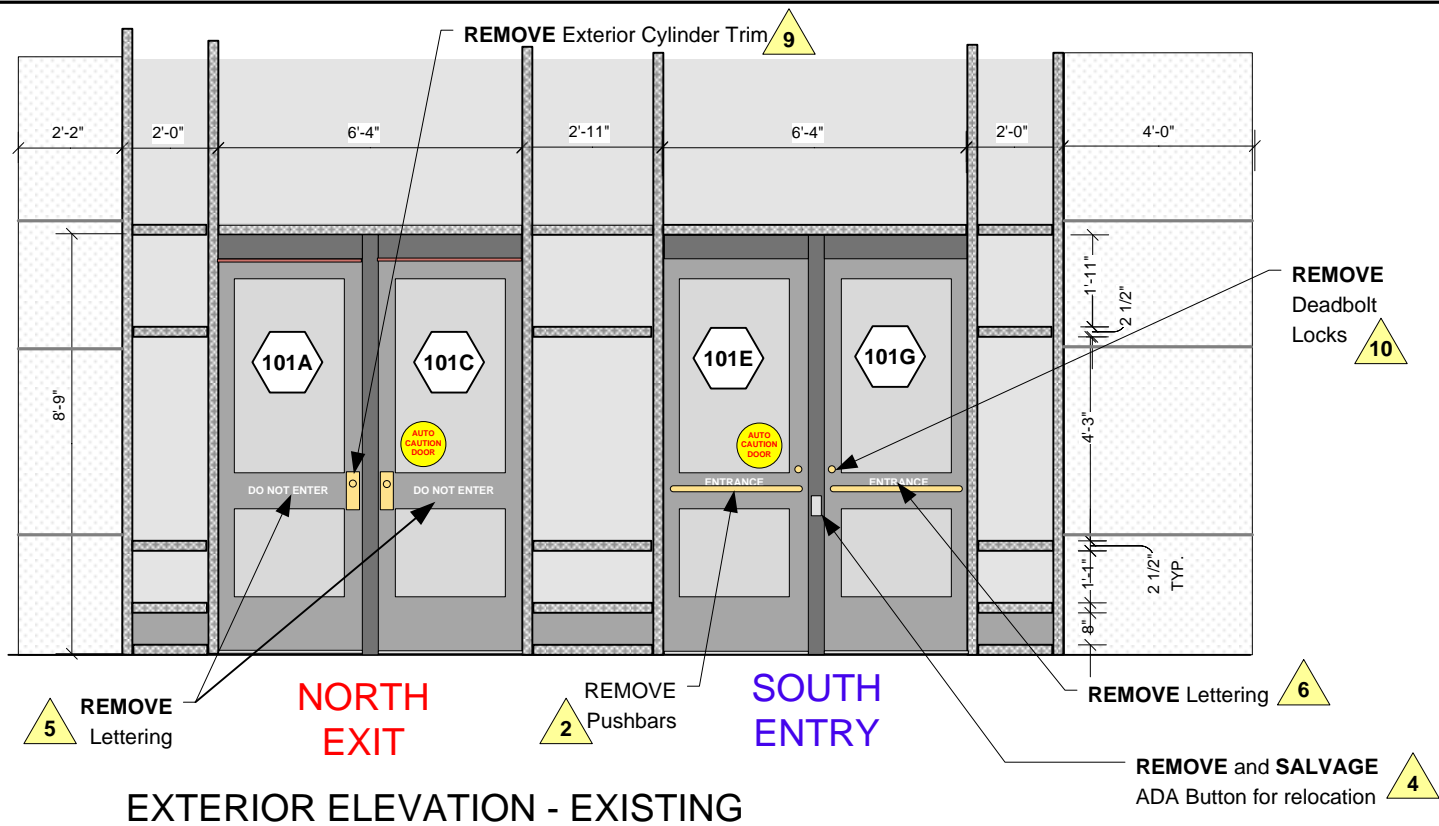


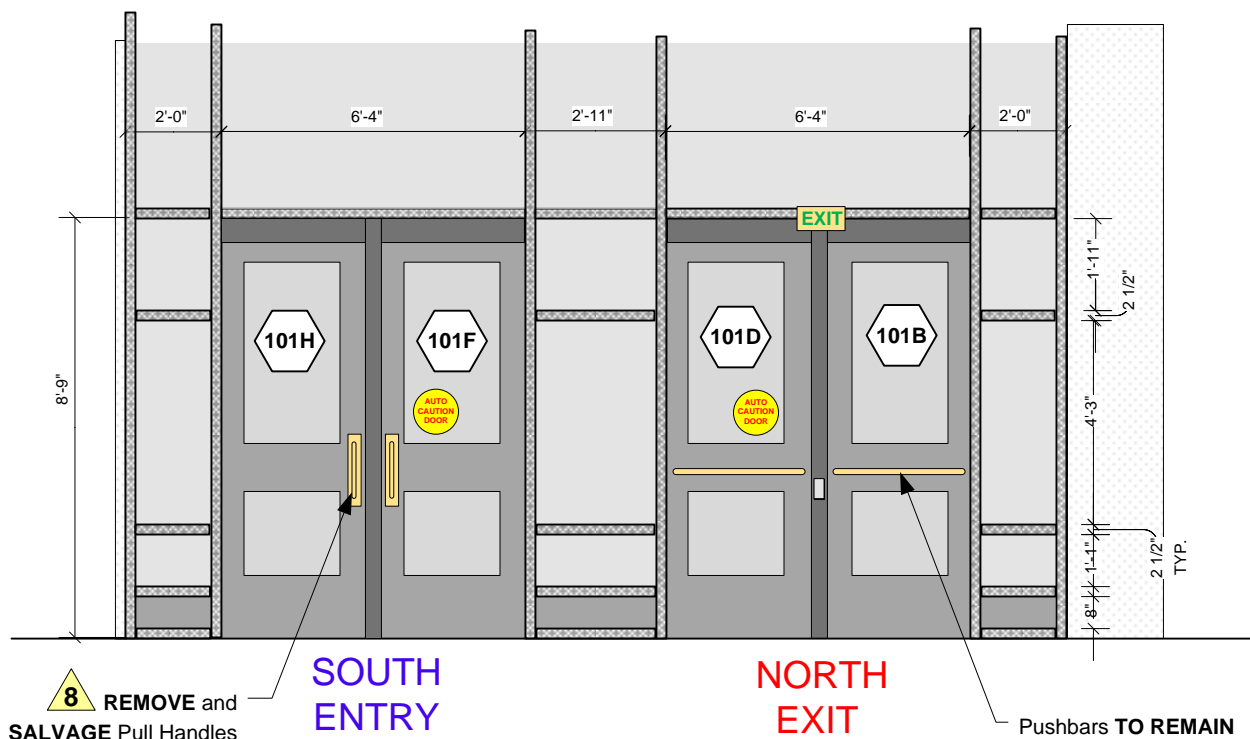
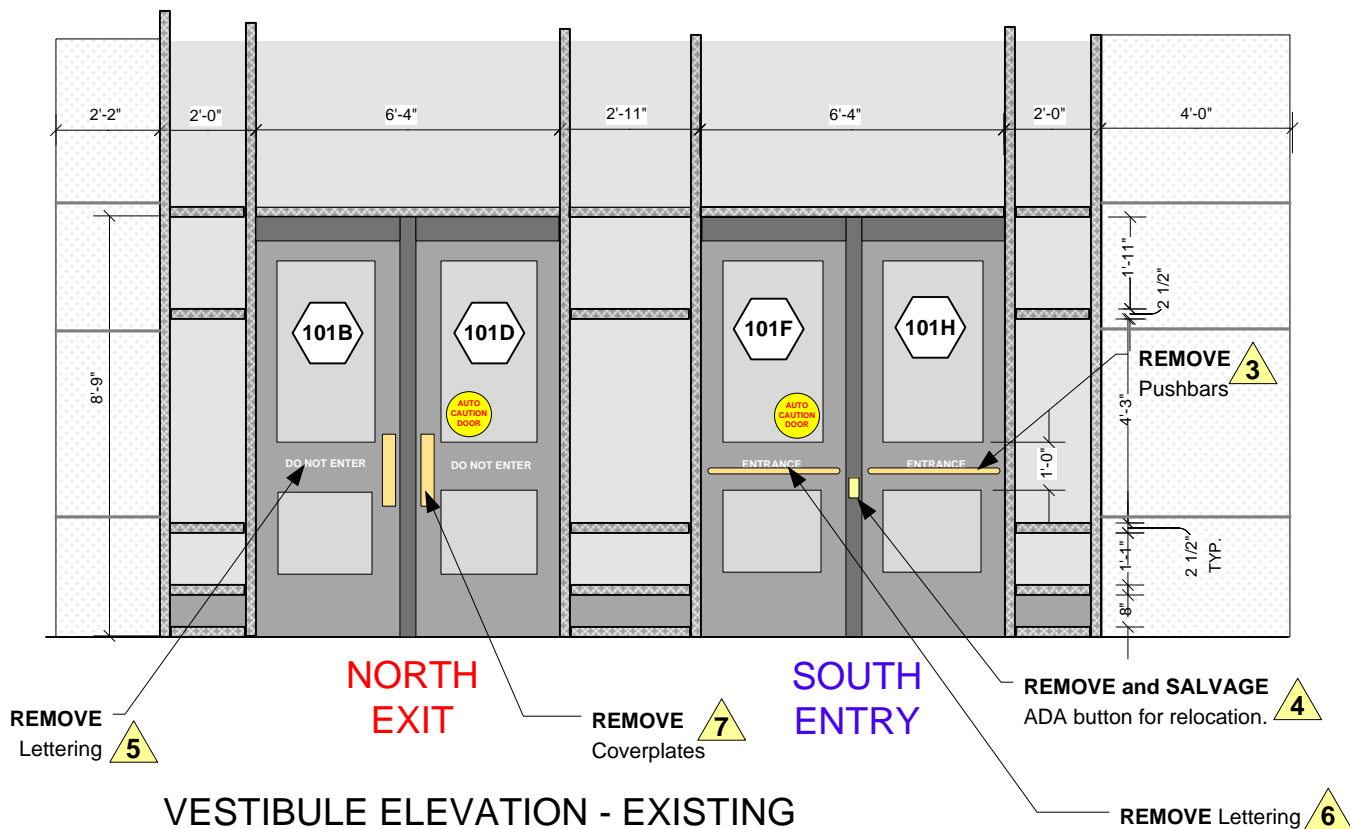


SOUTH ELEVATION

15

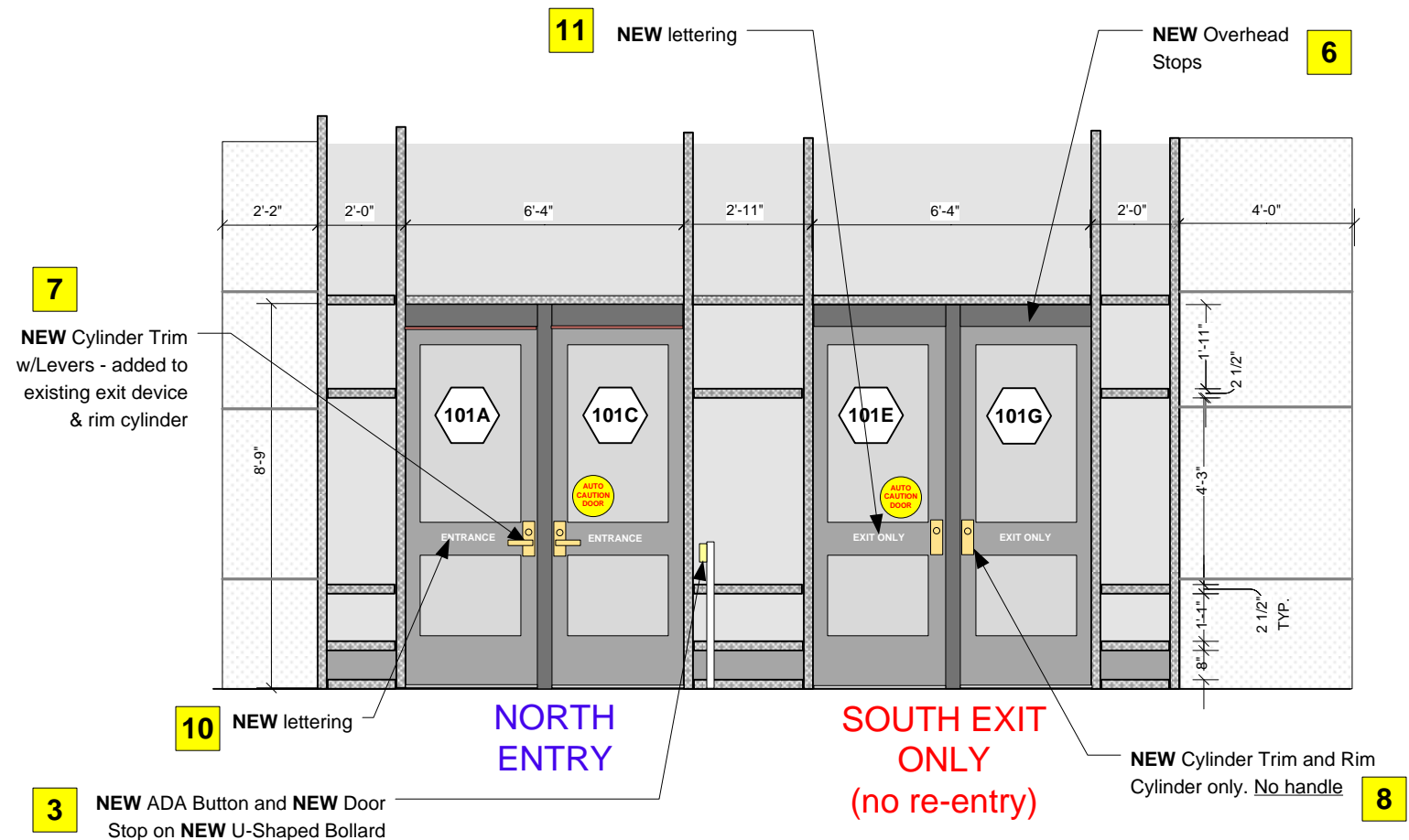
[Yellow Box] = Refer to G100 for Itemized Scope of Work



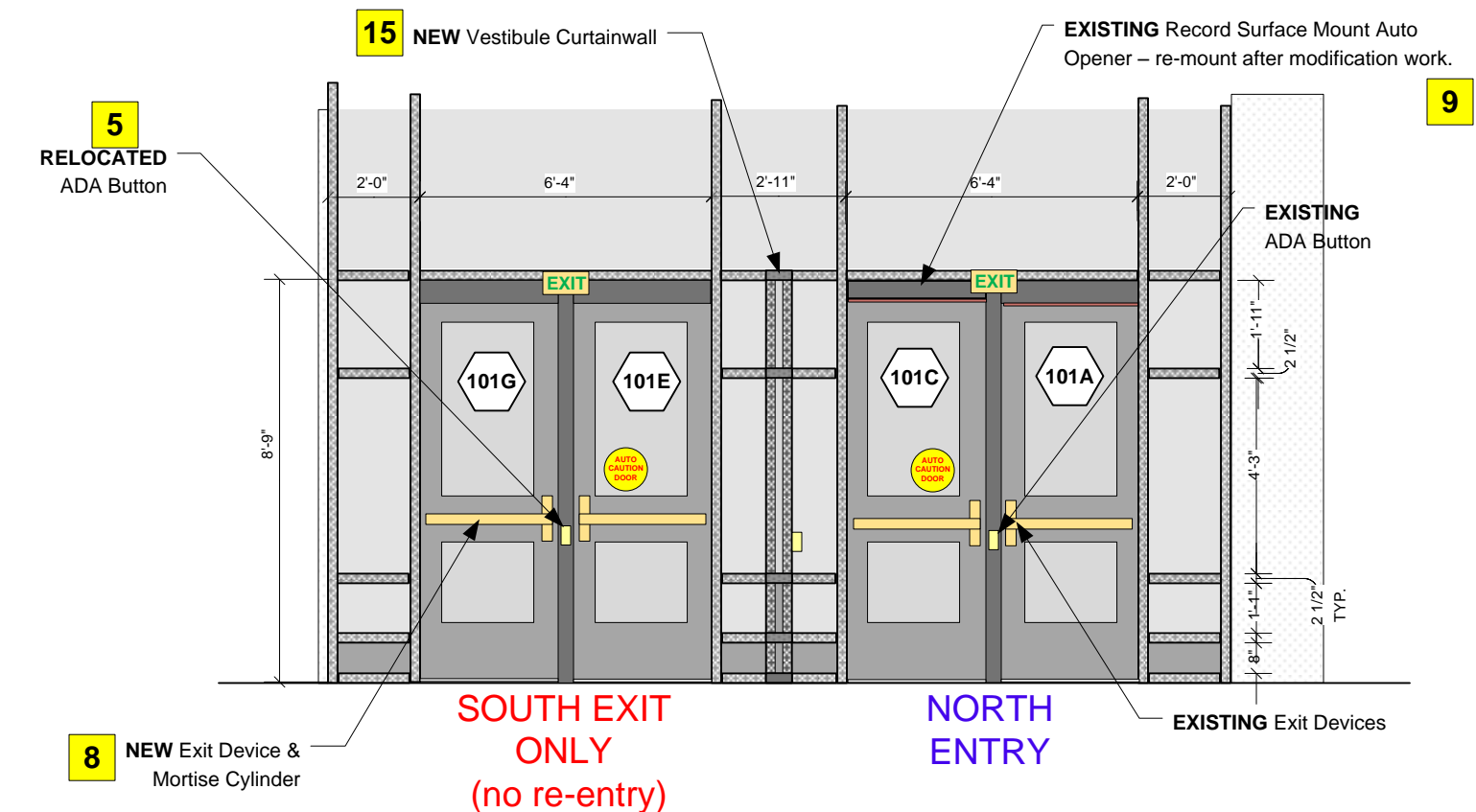


= Refer to G100 for Itemized Scope of Work



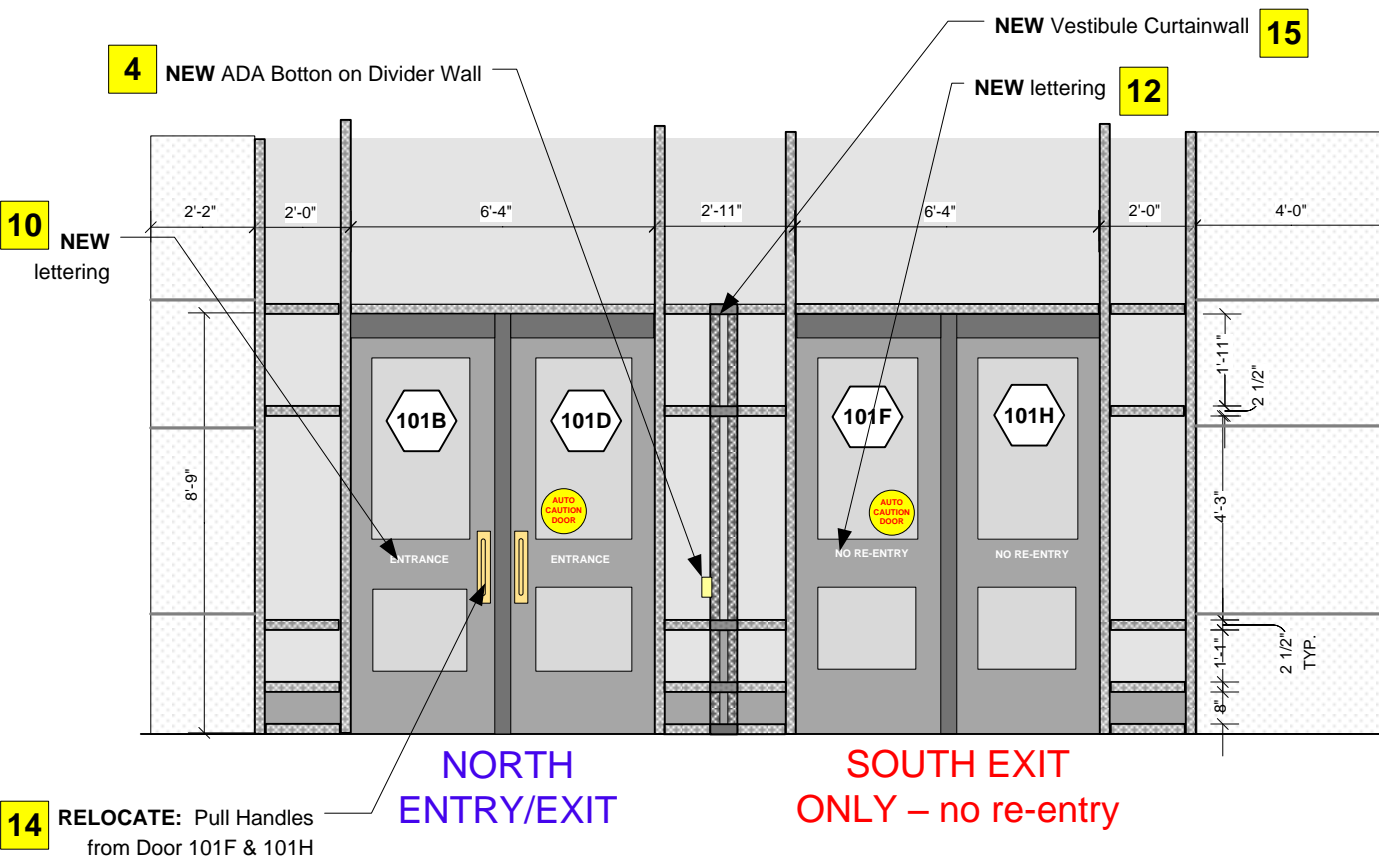


EXTERIOR ELEVATION - RECONFIGURED

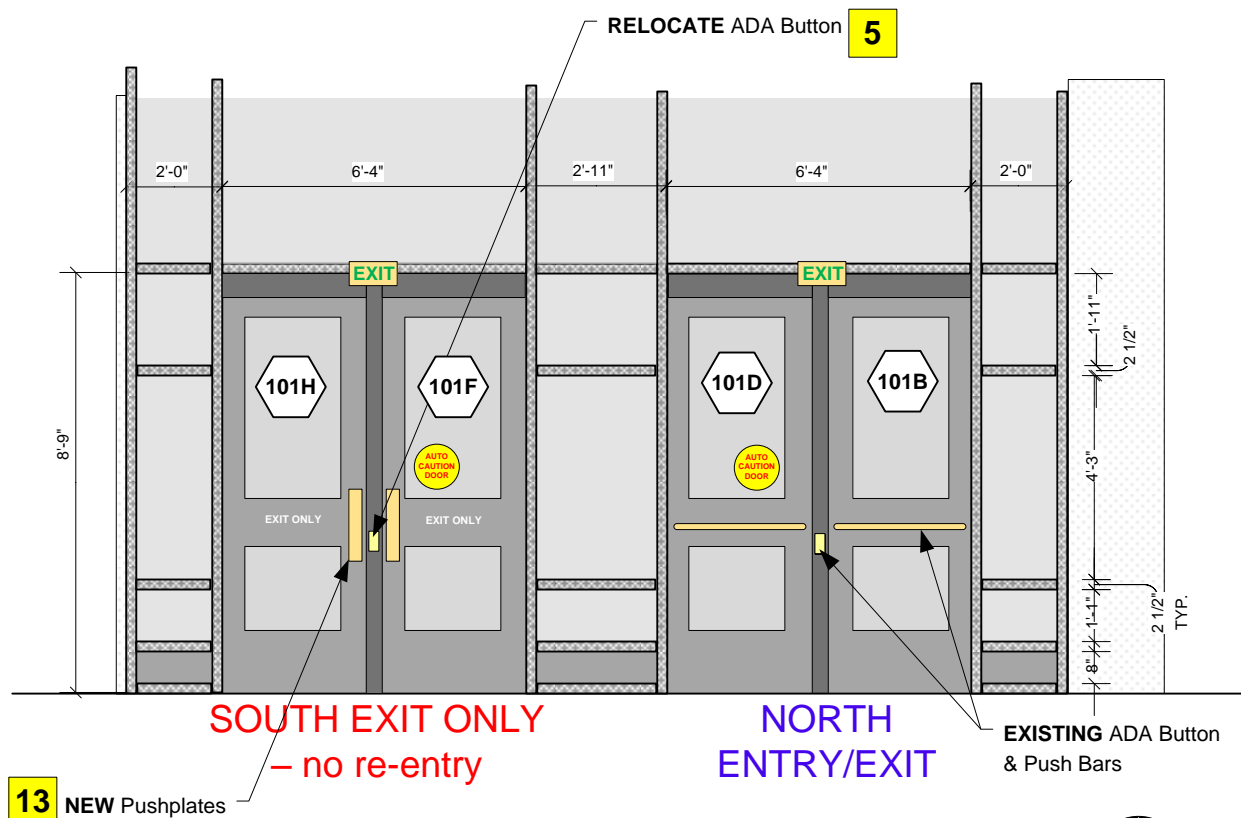


VESTIBULE SIDE ELEVATION - RECONFIGURED

VESTIBULE DOOR ELEVATIONS – NEW WORK



VESTIBULE ELEVATION - RECONFIGURED



LOBBY ELEVATION - RECONFIGURED

13 = Refer to A1.0 for Itemized Scope of Work

