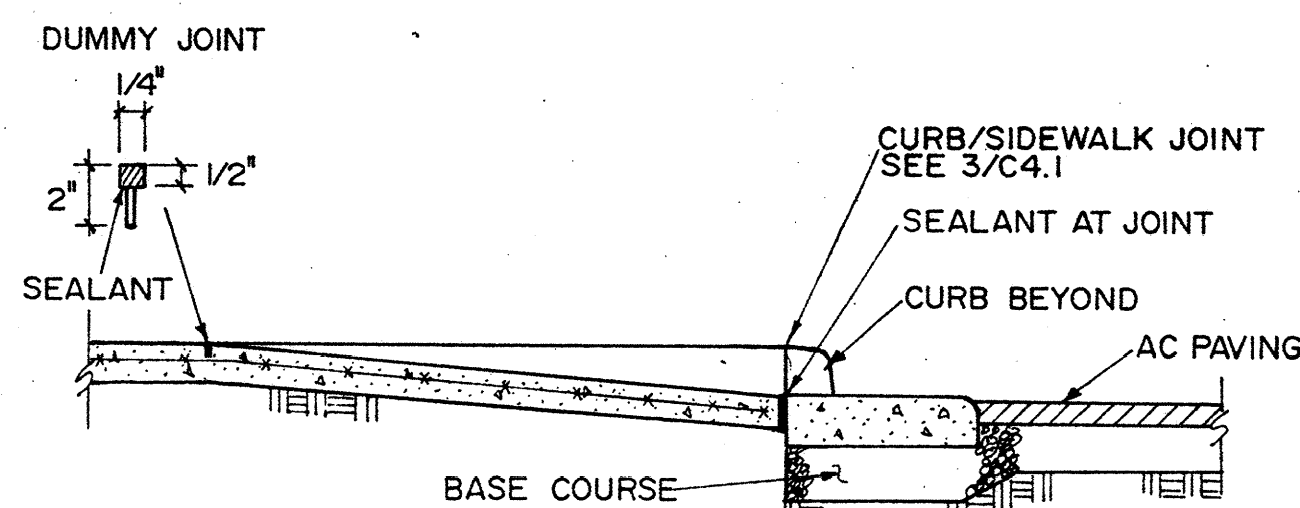
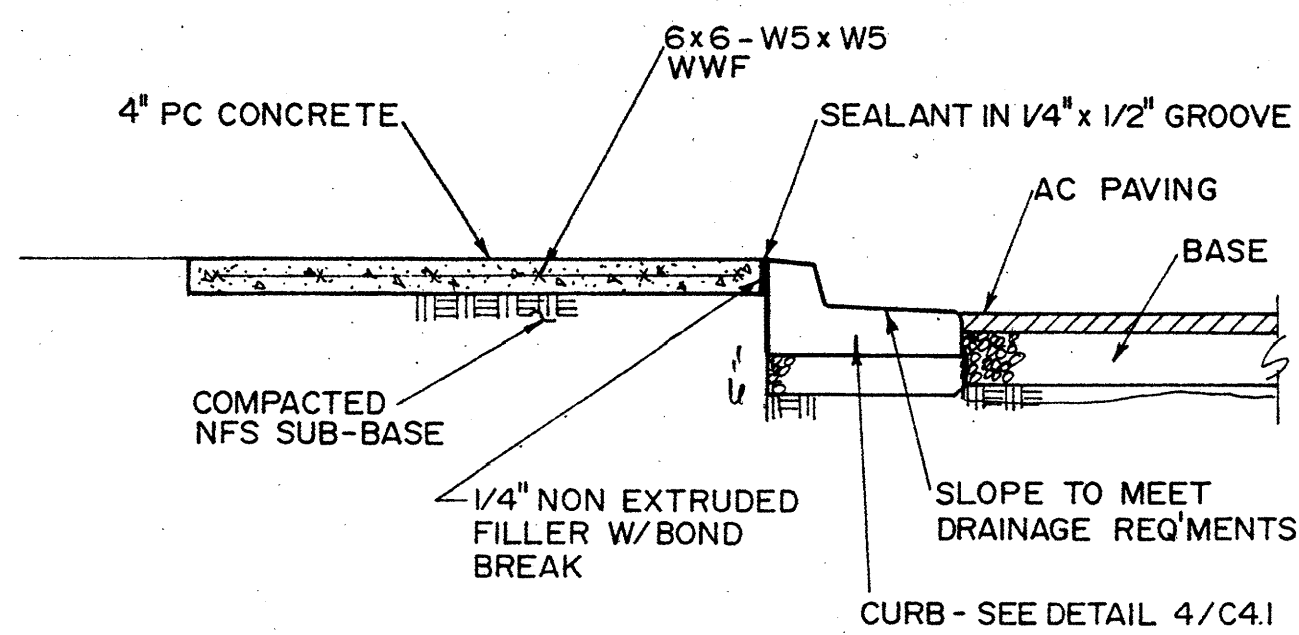


NOTE: FOR LOCATION OF ACCESS RAMP SEE C1.1

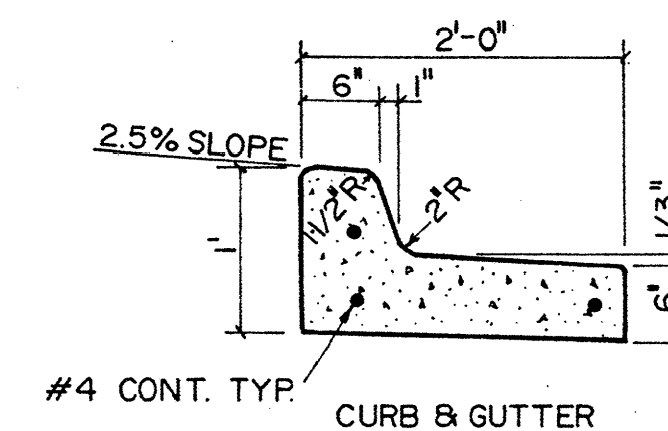
1 TYPICAL ACCESS RAMP
NTS



2 SECTION THRU ACCESS RAMP
NTS

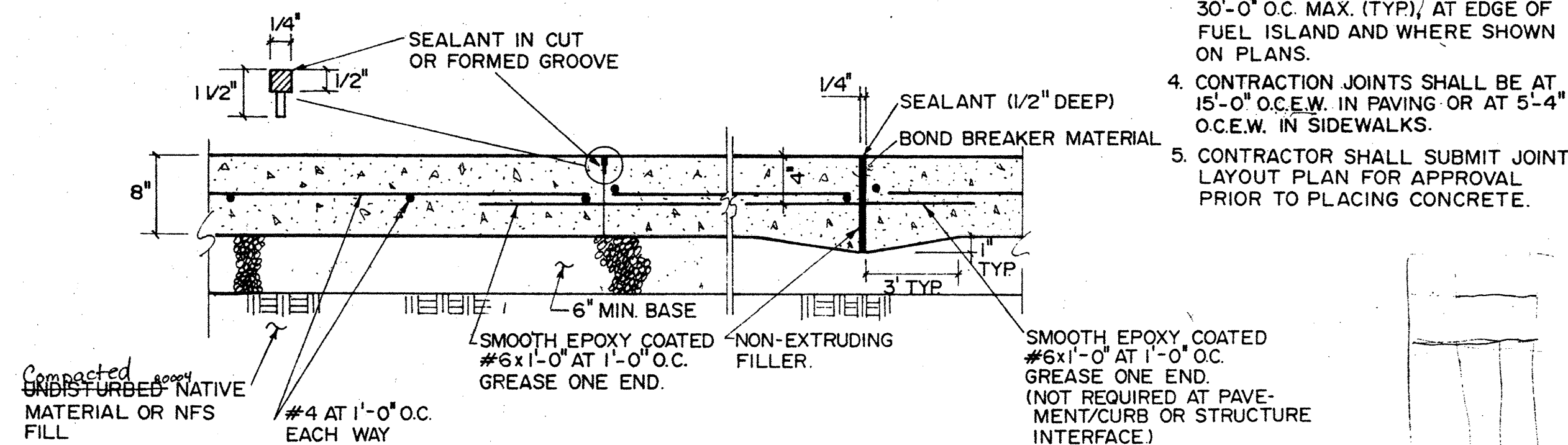


3 TYPICAL SIDEWALK AND CURB SECTION
NTS



NOTE: BOTH FRONT AND BACK EDGES OF THE CURB & GUTTER SHALL BE TROWELED TO A RADIUS OF ONE-HALF (1/2) INCH.

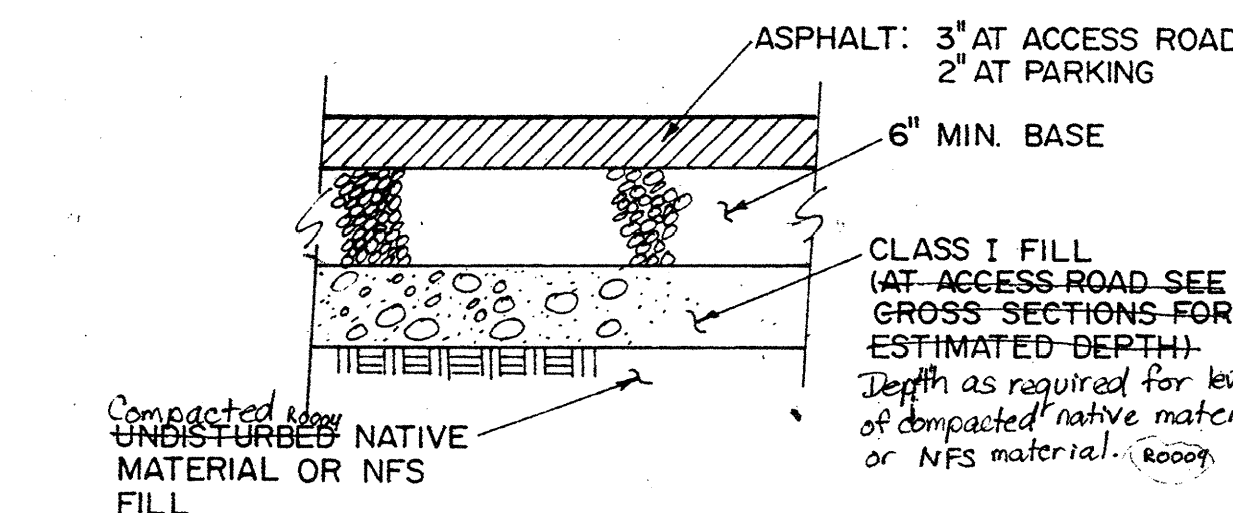
4 TYPICAL CURB DETAILS
NTS



CONTRACTION JOINT

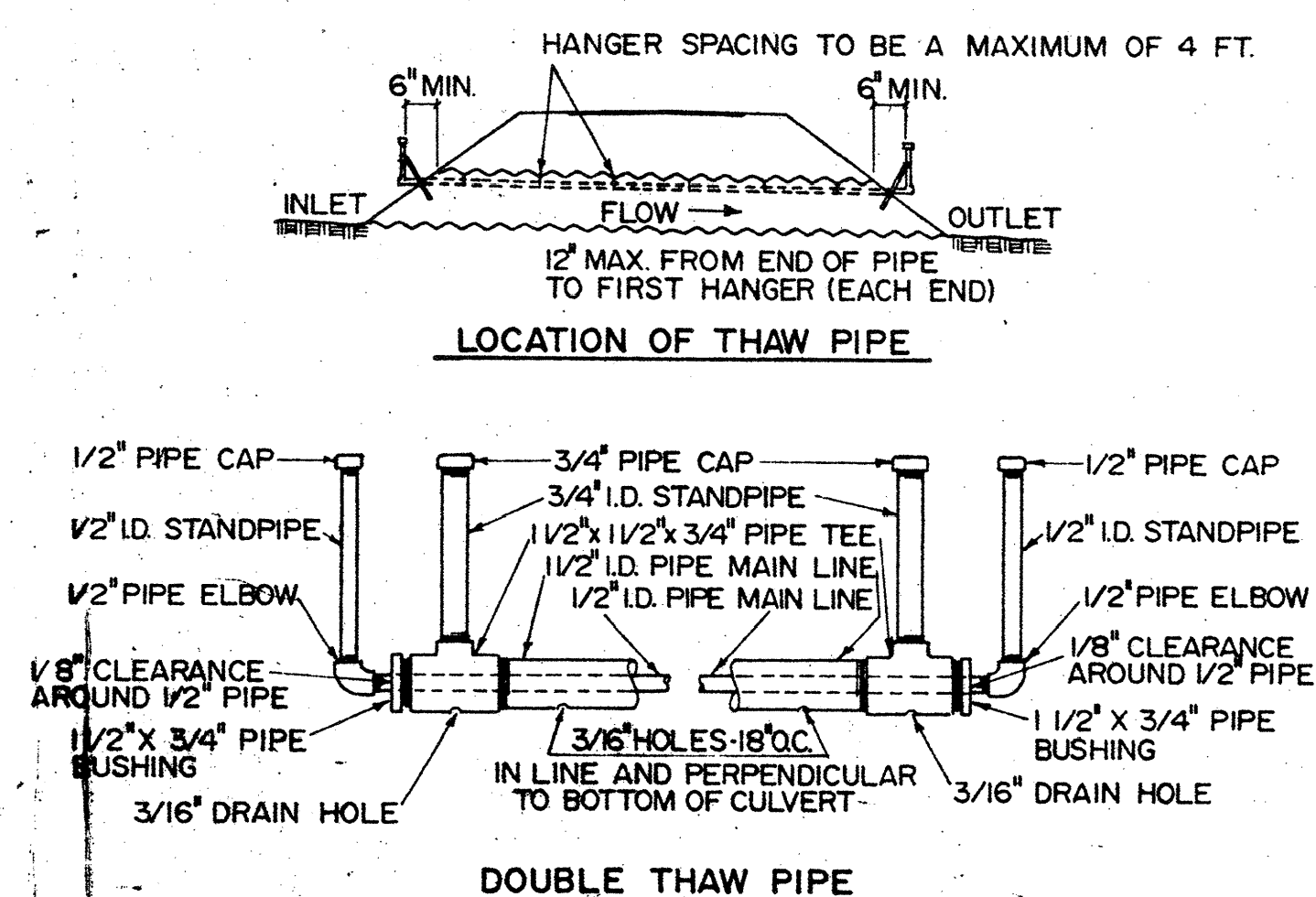
EXPANSION JOINT

6 PORTLAND CEMENT (PC) CONCRETE PAVING DETAILS
NTS

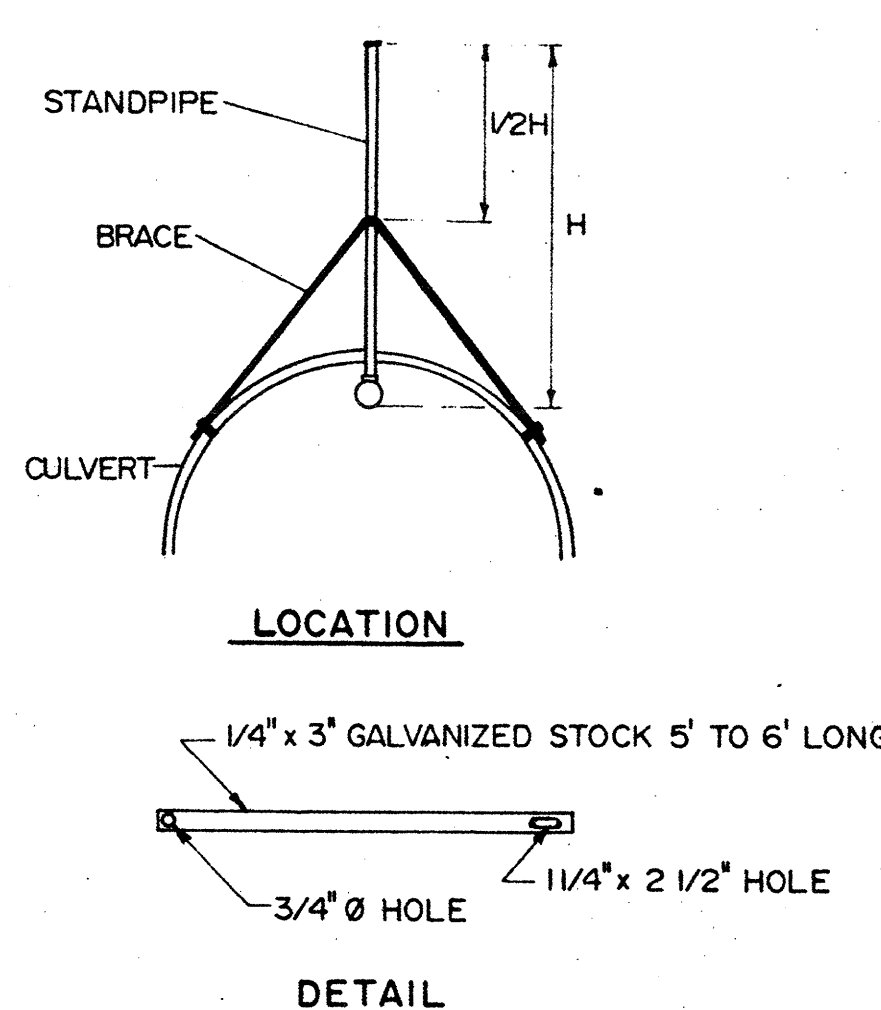


7 TYPICAL ASPHALT
CONCRETE (AC) PAVING DETAILS
NTS

NOTES (11, 12, 13):
1. ALL MATERIAL AND WORKMANSHIP SHALL BE IN ACCORDANCE WITH THE SPECIFICATIONS.
2. HEIGHT OF ALL STANDPIPES TO BE 1/2 THE HEIGHT OF CULVERT COVER OR 5' WHICHEVER IS LESS.
3. 1/2\"/>



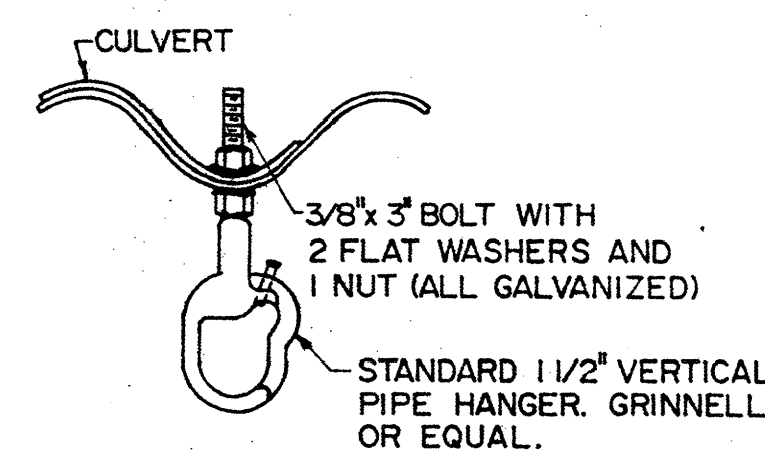
LOCATION OF THAW PIPE



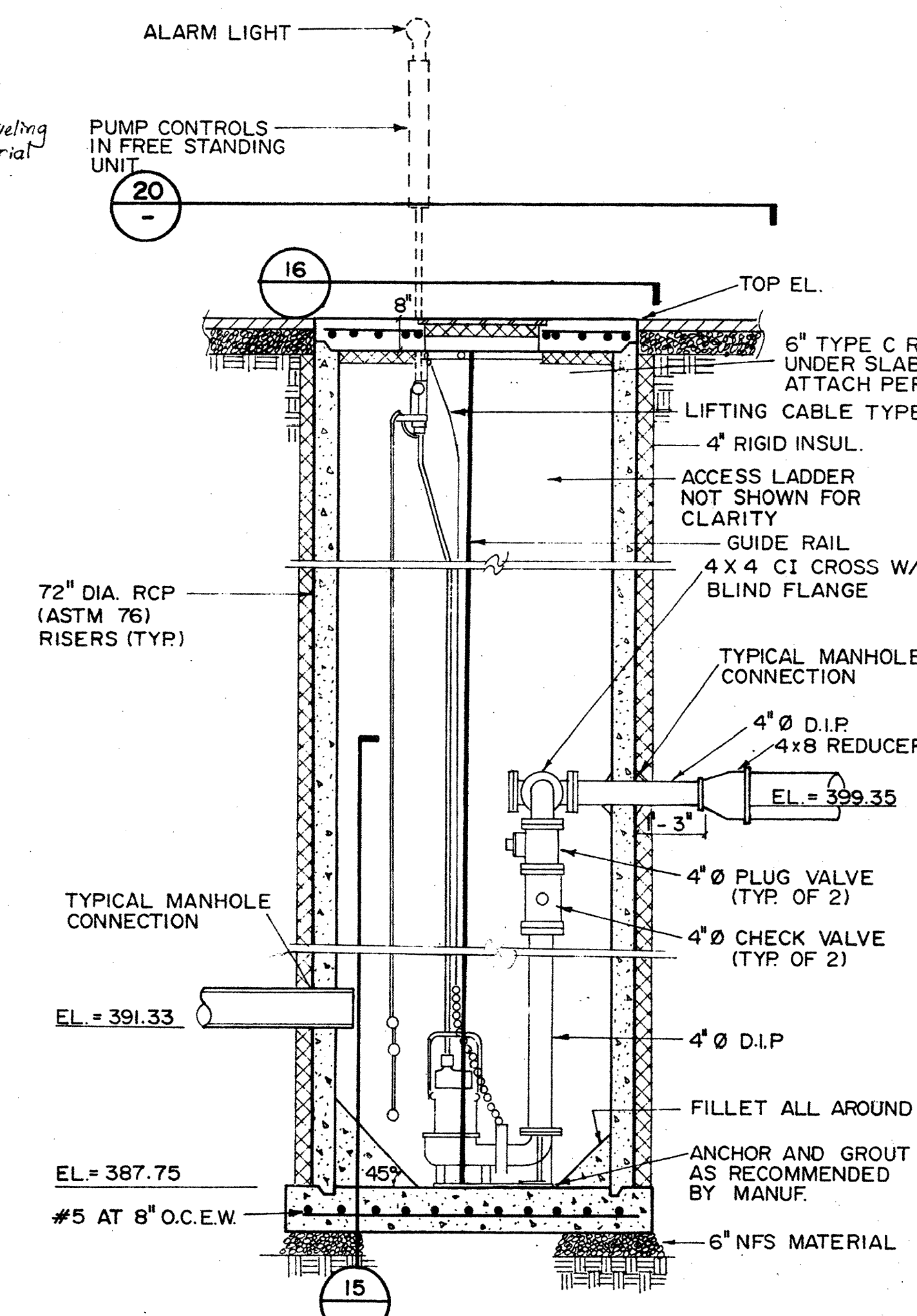
LOCATION

DETAIL

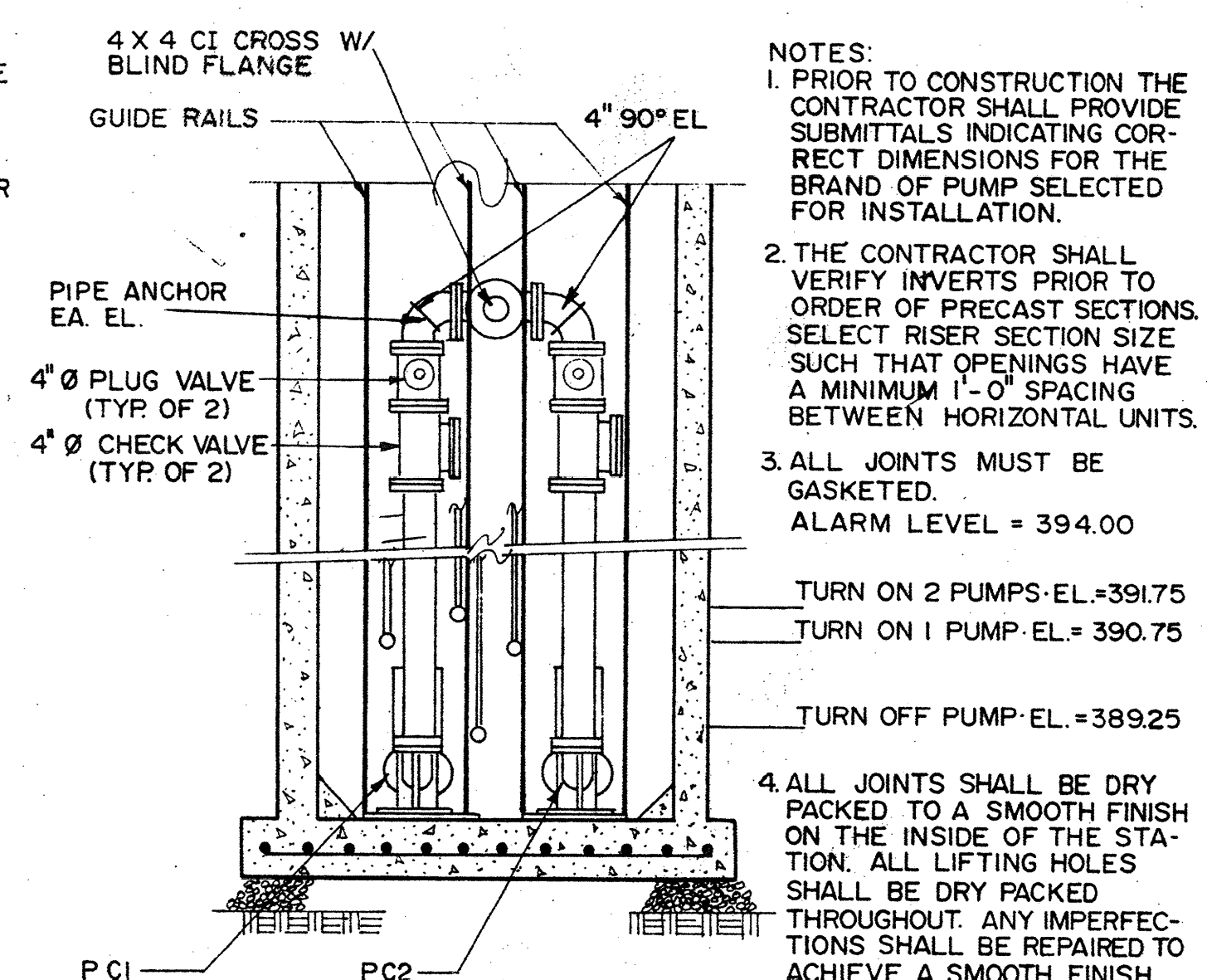
12 STANDPIPE BRACE
NTS



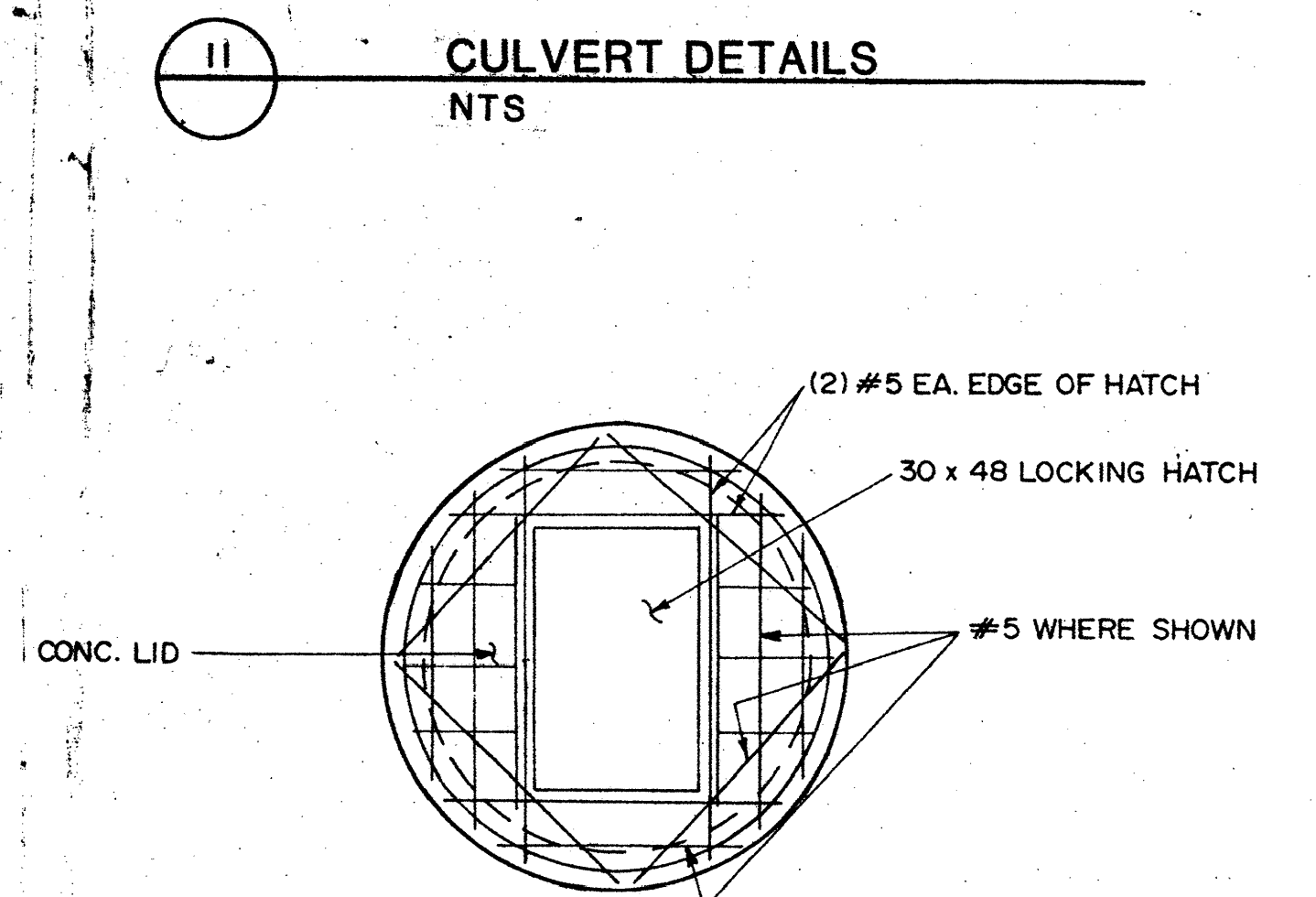
13 THAW PIPE HANGER DETAIL
NTS



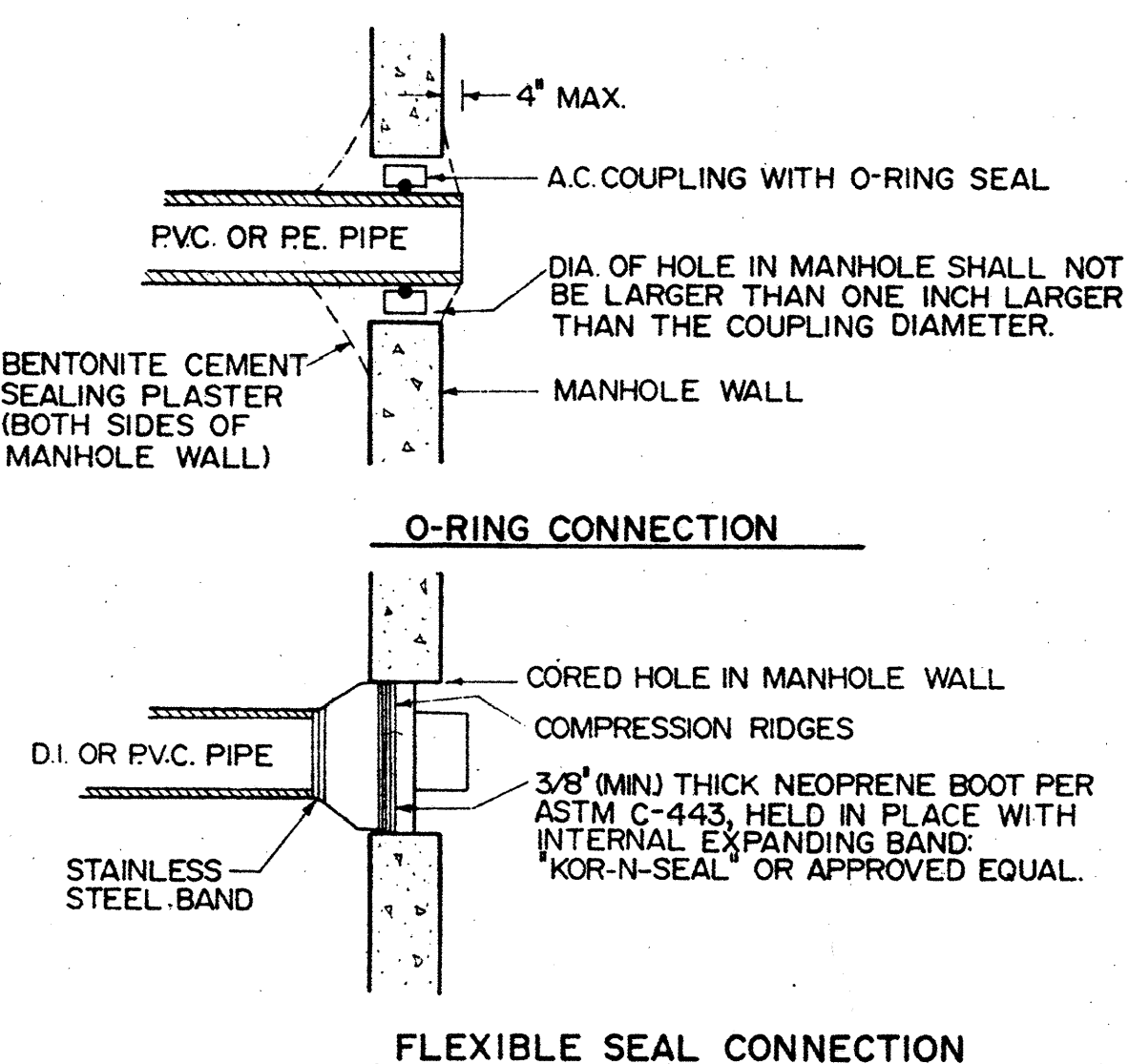
14 LIFT STATION SECTION
NTS



15 LIFT STATION SECTION
NTS

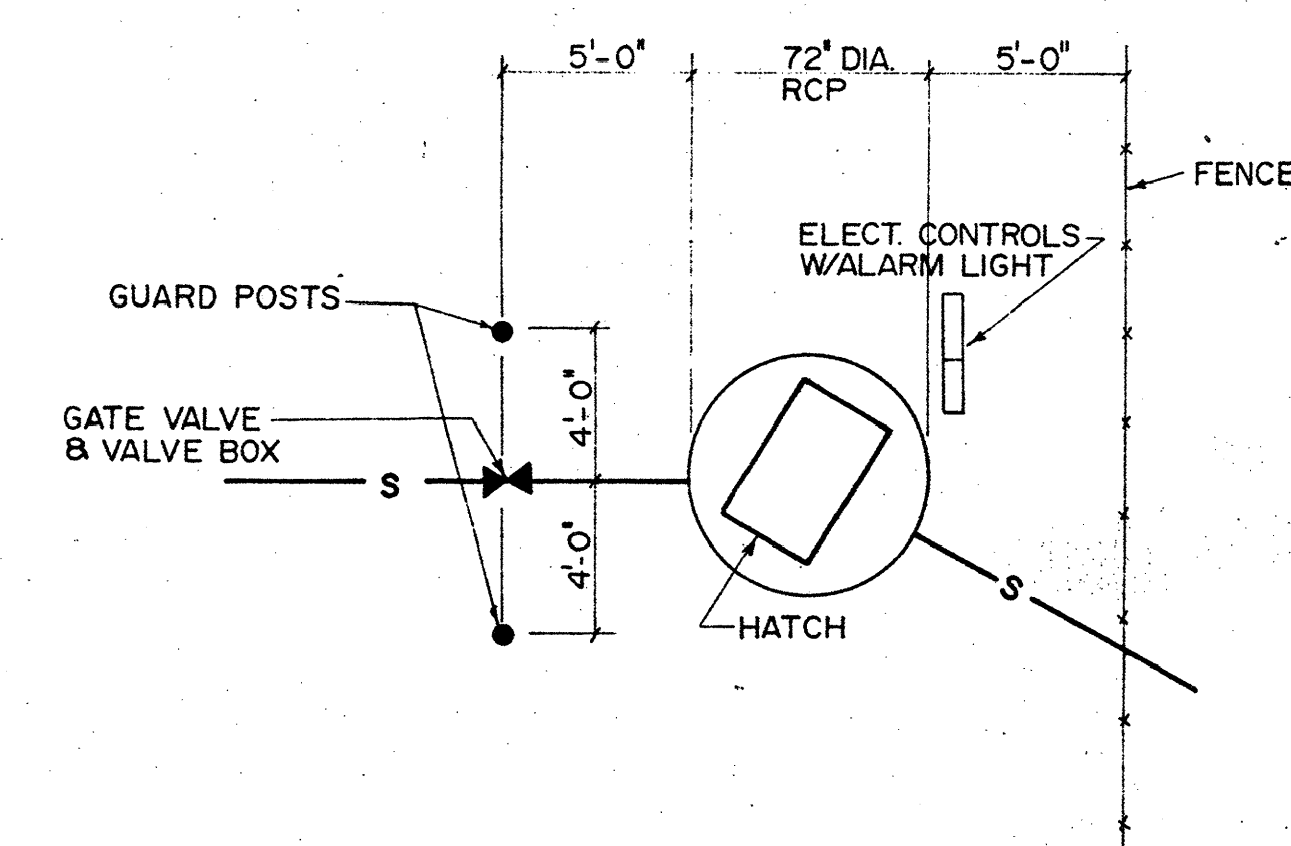


11 CULVERT DETAILS
NTS



17 TYPICAL MANHOLE CONNECTIONS
NTS

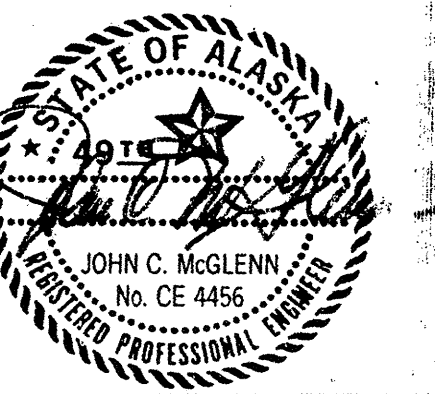
16 LIFT STATION COVER
NTS



20 LIFT STATION PLAN
1\"/>

charles
bettisworth
and
company

architecture-planning
p.o. box 73209
fairbanks, alaska
130 seward st, suite 408
juneau, alaska
3900 arctic blvd, suite 101
anchorage, alaska



consultants:
KCM
Kramer, Chin & Mayo, Inc.
3701 East Tudor Road
Anchorage, Alaska 99507-1217
(907) 563-0666

Alaska Army National Guard
Anchorage Armory
ARMY NATIONAL GUARD PROJECT No. 165
Camp Detail

job no. 1329-01
drawn by CMG/BL5
date 6/30/89

TYPICAL DETAILS
PAVEMENTS AND
LIFT STATION

C 4.1
OF