

Attachment 1. Development Plan

Legal Description: Alaska Tideland Survey No. 1165

Located within portions of Sections 17, 18, 19, & 20 of
Township 77 South, Range 84 East,
Copper River Meridian

Terrain/ground cover: The lease area is below the mean high water line.

Access: A road from the Saltery Point Sortyard connects to the State Highway and roads in Hydaburg. Access by the public will only be restricted during active ship loading operations due to safety concerns.

Buildings and other structures: There are no buildings; structures include 1) a shot rock drive-down ramp for barge and boat access to the uplands, 2) one approximately 180' long stiff-leg with one six ton anchor owned by Sealaska Timber Corporation, 3) two shore ties attached to a Sealaska Timber Corporation owned mooring buoy, 4) one walk-way and float with two one-ton anchors. .

Power Source: None

Waste types, sources, disposal: None

Hazardous substances: None – boats accessing the lease area will have self-contained fuel storage and fueling will take place elsewhere.

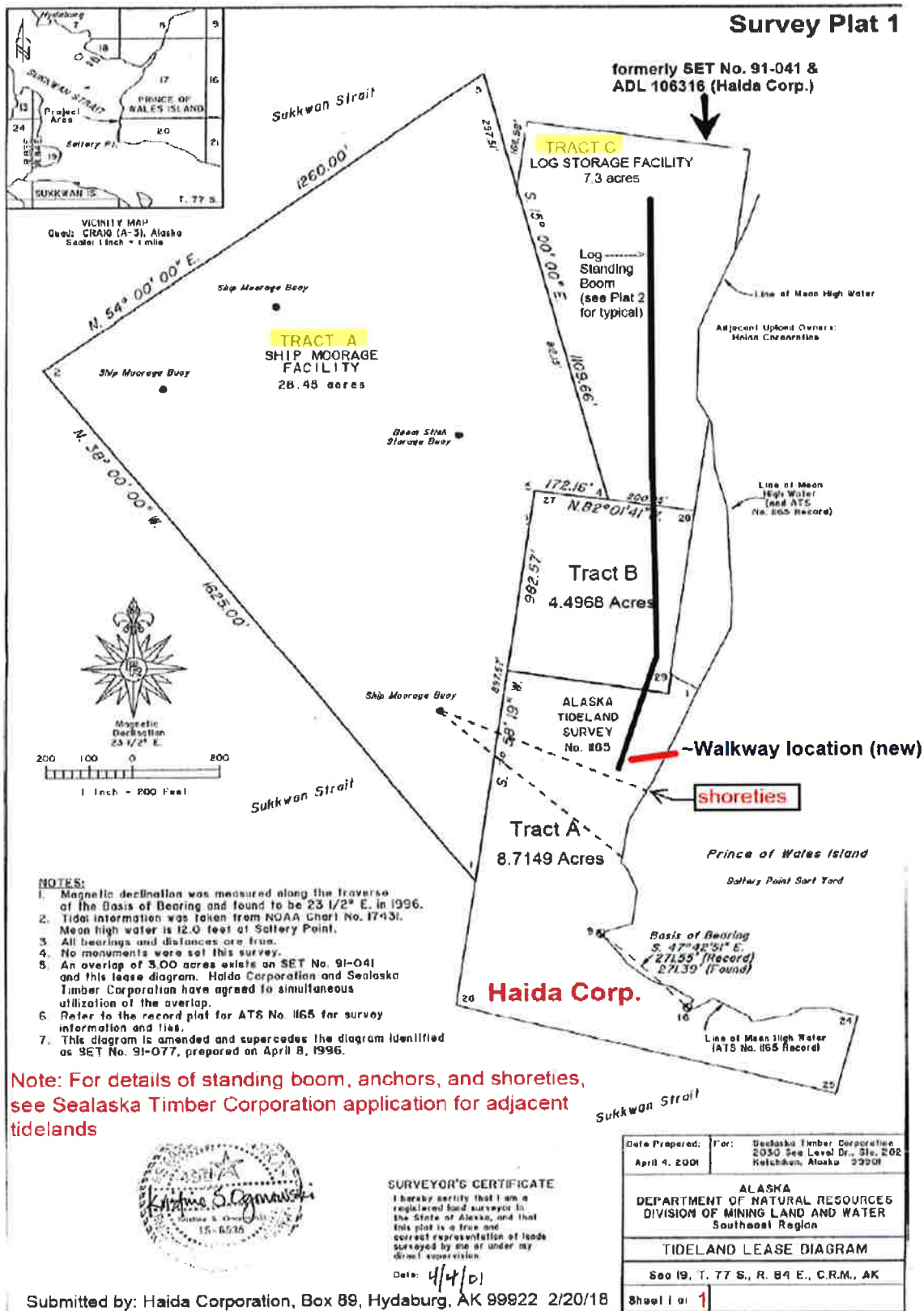
Water Supply: None

Parking areas and storage areas: Parking will occur on the adjacent uplands, there will be no fuel or hazardous material storage on the uplands.

Construction Plans for new dock: The plans, materials, schedule for installation will be Provided by Sealaska Timber Corporation. The dock is for use by stevedores being transported by small boats to rafts and ship during raft movement and ship loading operations.

Number of people using the site: The number of people using the site will vary, depending on the specific activity on the adjacent tideland lease areas. During ship loading, up to 20 people may be transported across this lease area to get to the ship, during log storage and raft moving only one or two people will be using the area. Barge or landing craft loading and un-loading operations will vary in crew size depending on the specific vessels involved.

Maintenance and operations: Sealaska Timber Corporation will maintain the standing boom, walk way and dock, anchors, and shore ties; Haida Corporation will maintain the drive-down ramp.



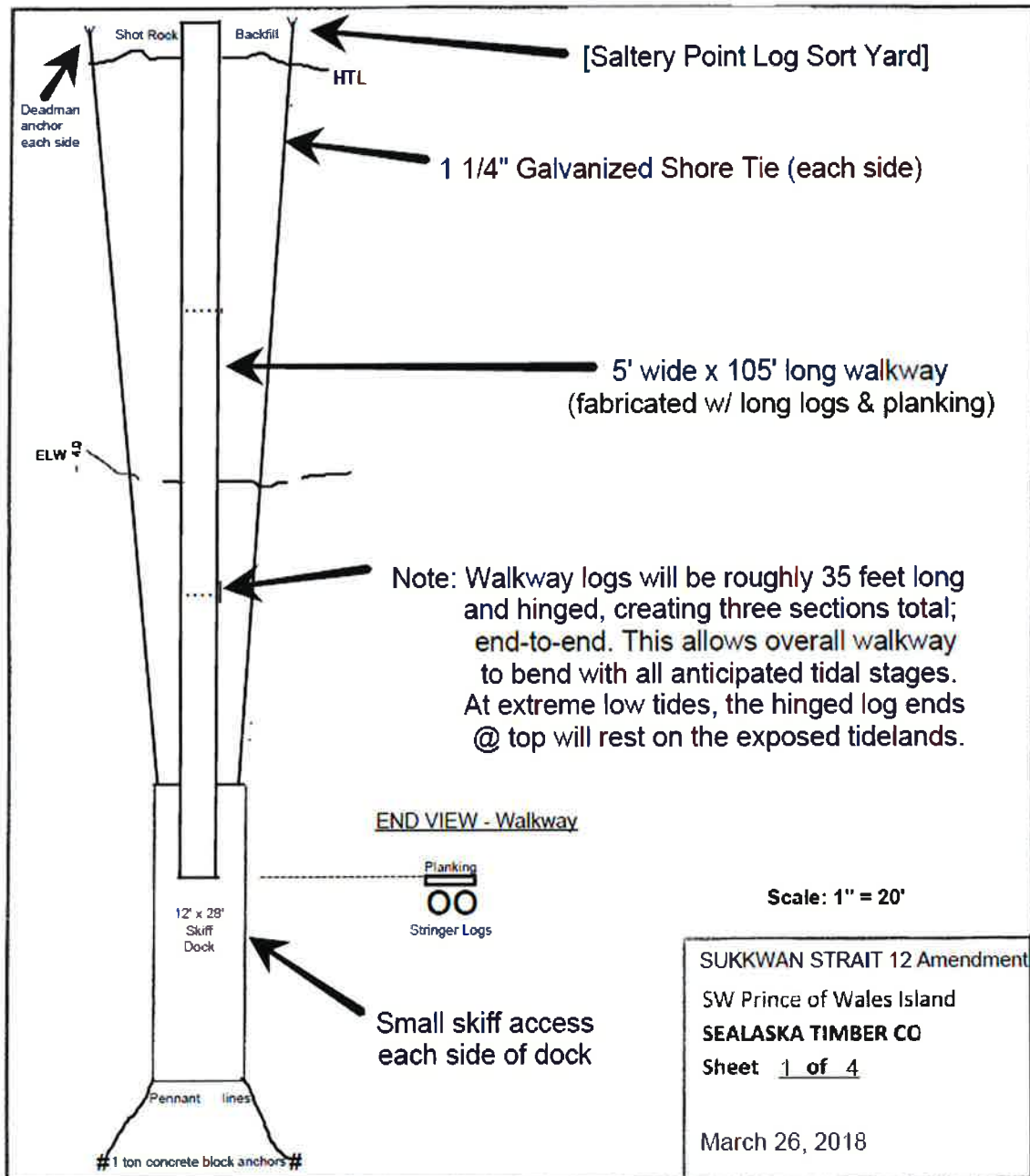


Saltery Point Sortyard – Photo date 4.12.2017. Drive down ramp is in the center of the photograph.

Sukkwān Strait 12 Modification

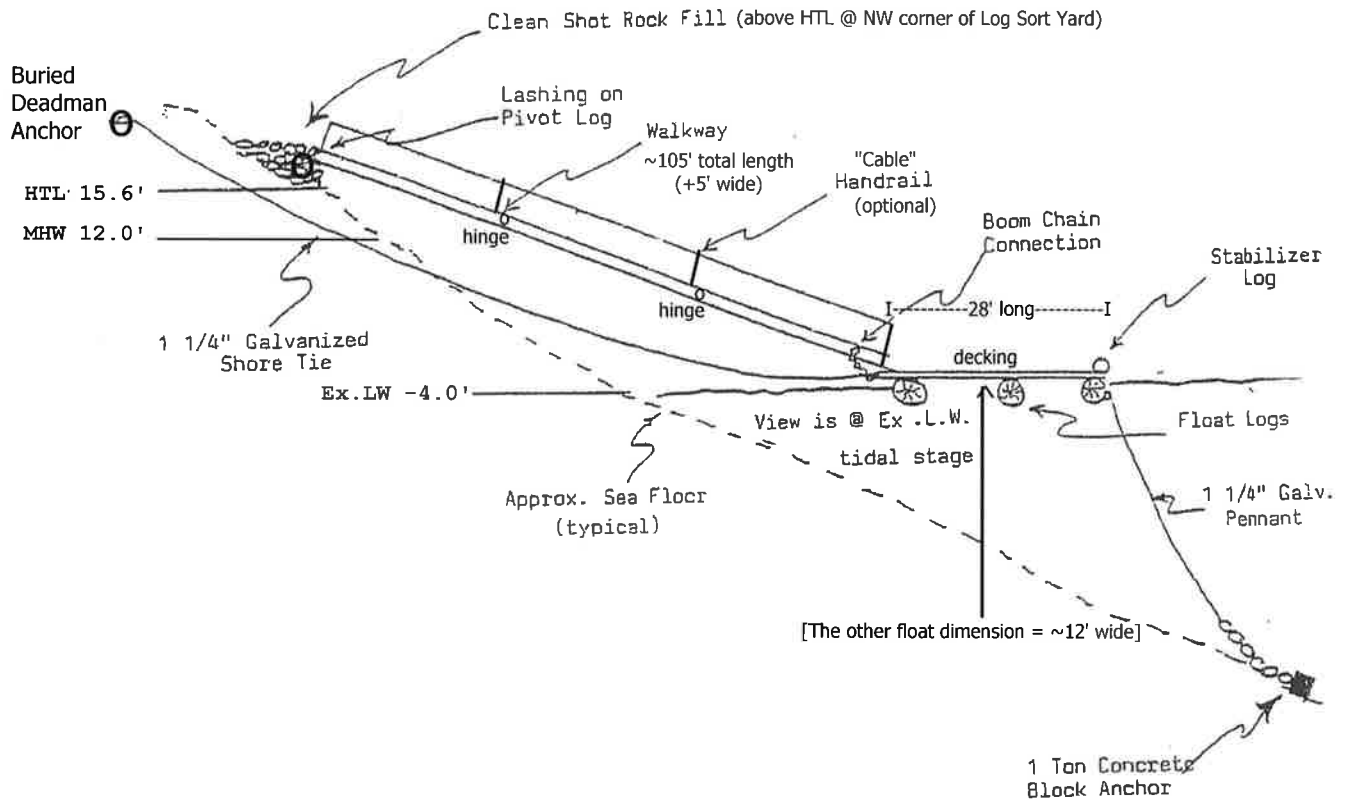
- 2018 ACOE Application -

[Dock & Walkway Schematic - Plan View]



Sukkwon Strait Modification (2018) POA-1980-00225

Walkway & Dock Schematic-Profile View



30 0 15 30

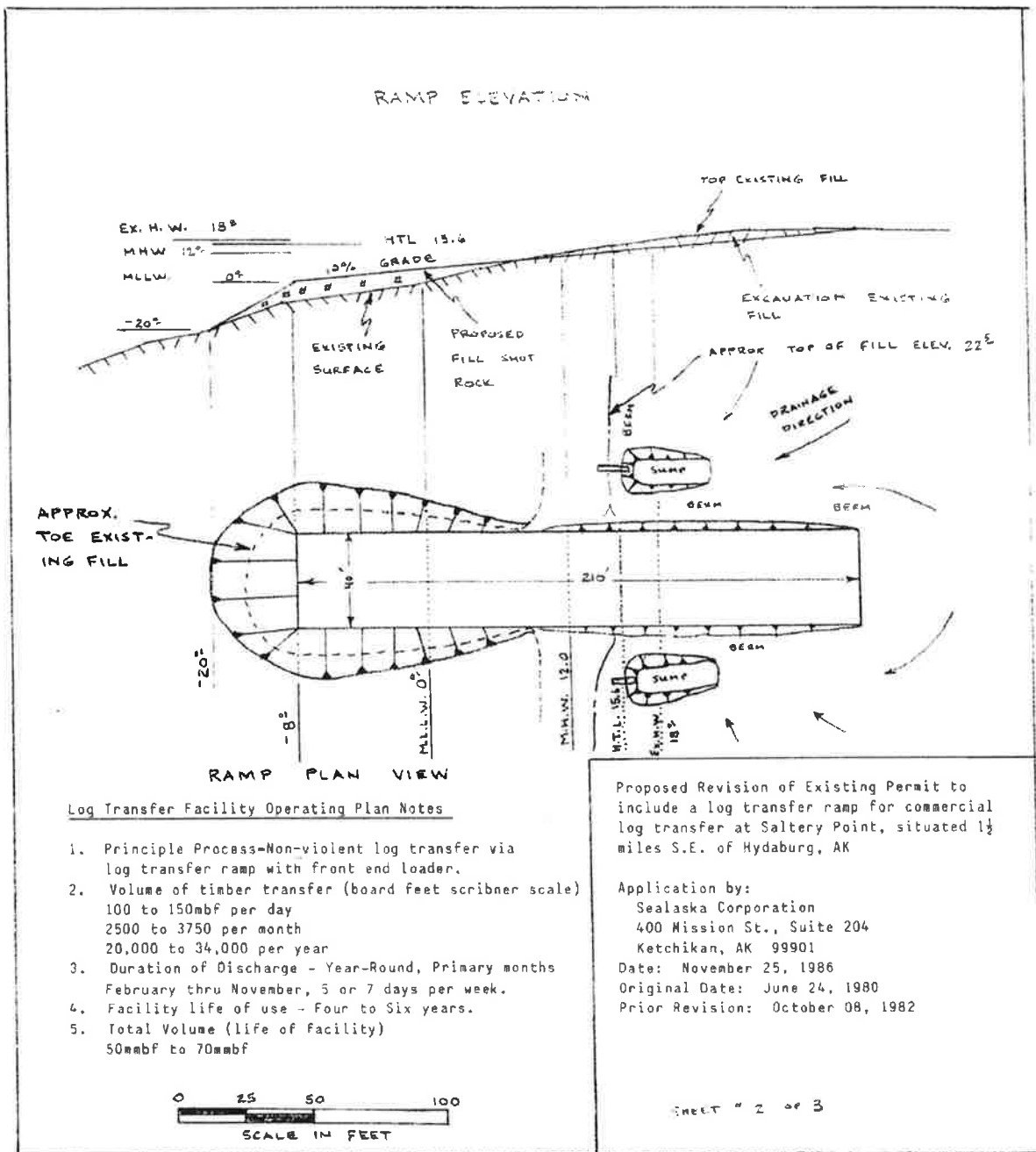
~SCALE (FT.)

POA-1980-00225; Sukkwon Strait

Application by Sealaska Timber Company, LLC

Revised - May 1, 2018

Closure/reclamation plan: Upon final termination of the lease, the standing boom, walkway, dock, anchors, and shore ties will be removed, the shot rock drive-down ramp will be removed using a tracked excavator. The shoreline will be restored to as near as possible to the MHW line on the survey plat, and all cable or metal will be removed from the tidelands. The shot rock fill will be removed to expose the natural beach rock and gravel.



Memorandum of Understanding (MOU)

In consideration of a long-standing working relationship at the Salterty Point facilities, the parties
Haida Corporation, P.O. Box 89, Hydaburg, Alaska 99922 - and
Sealaska Timber Company LLC, 1900 1st Avenue, Suite 315, Ketchikan, Alaska 99901

...enter into this formal MOU with a mutual understanding regarding their respective uses of the
Salterty Point sort yard and adjacent State of Alaska tideland lease areas, near Hydaburg, Alaska.

The parties hereto acknowledge the following:

1. Haida Corporation is the sole owner of the adjacent uplands, except for USS 580.
2. Both Sealaska Timber Company and Haida Corporation own timberlands tributary to Salterty Point, as well as other off-site economic development opportunities that require the use of the Salterty Point access to water for transport of equipment and materials.
3. Haida Corporation intends to continue leasing State of Alaska tidelands directly off-shore of the upland sort yard, and more particularly within ATS #1165.
4. Sealaska Timber Company, LLC intends to lease State of Alaska tidelands adjacent to that leased by Haida Corporation for the purpose of log raft storage and ship loading.
5. A portion of the southernmost Ship Mooring Buoy (owned by Sealaska) is connected to underwater gear which secures and connects directly to the uplands owned by Haida Corporation, and more specifically, passes through and across the ATS#1165 area.

Mutual Indemnification:


1. The parties agree to be totally responsible for their own obligations and responsibilities with respect to their lease agreements with the State of Alaska.
2. Haida Corporation and Sealaska Timber Company shall indemnify one another for the activities of their respective contractors, employees, and representatives, and will maintain commercial limits of liability insurance covering their respective activities.

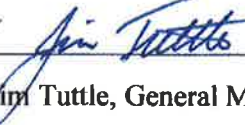
Consideration:

In consideration of the foregoing, Sealaska Timber Company will continue to give preference to hiring qualified Haida Corporation shareholders for longshoring and related work positions for Sealaska Timber Company ship-loading operations at the Salterty Point facility.

Haida Corporation

Sealaska Timber Co. LLC

 1-4-18
Alvin Edenshaw, Jr. President DATE


Jim Tuttle, General Manager DATE

1/9/18
DATE