

ADJACENT PROPERTY OWNERS:
 MERCHANTS WHARF LLC CITY AND BOROUGH OF JUNEAU
 2 MARINE WAY, STE 201 155 S. SEWARD ST.
 JUNEAU, AK 99801 JUNEAU, AK 99801
 AJT MINING PROPERTIES, INC
 5601 TONGARD CT
 JUNEAU, AK 99801

WATER BODIES:
 GASTINEAU CHANNEL & GOLD CREEK

VICINITY MAP

APPLICATION BY:
 ALASKA STATE DEPT. OF TRANSPORTATION
 AND PUBLIC FACILITIES
 DESIGN & ENGINEERING SERVICES DIVISION
 SOUTHCOAST REGION

69393 EGAN DRIVE IMPROVEMENTS
 MAIN STREET TO 10TH STREET
AT: JUNEAU, ALASKA
LOCATED IN: TOWNSHIP 41 SOUTH,
 RANGE 67 EAST
 MERIDIAN, ALASKA

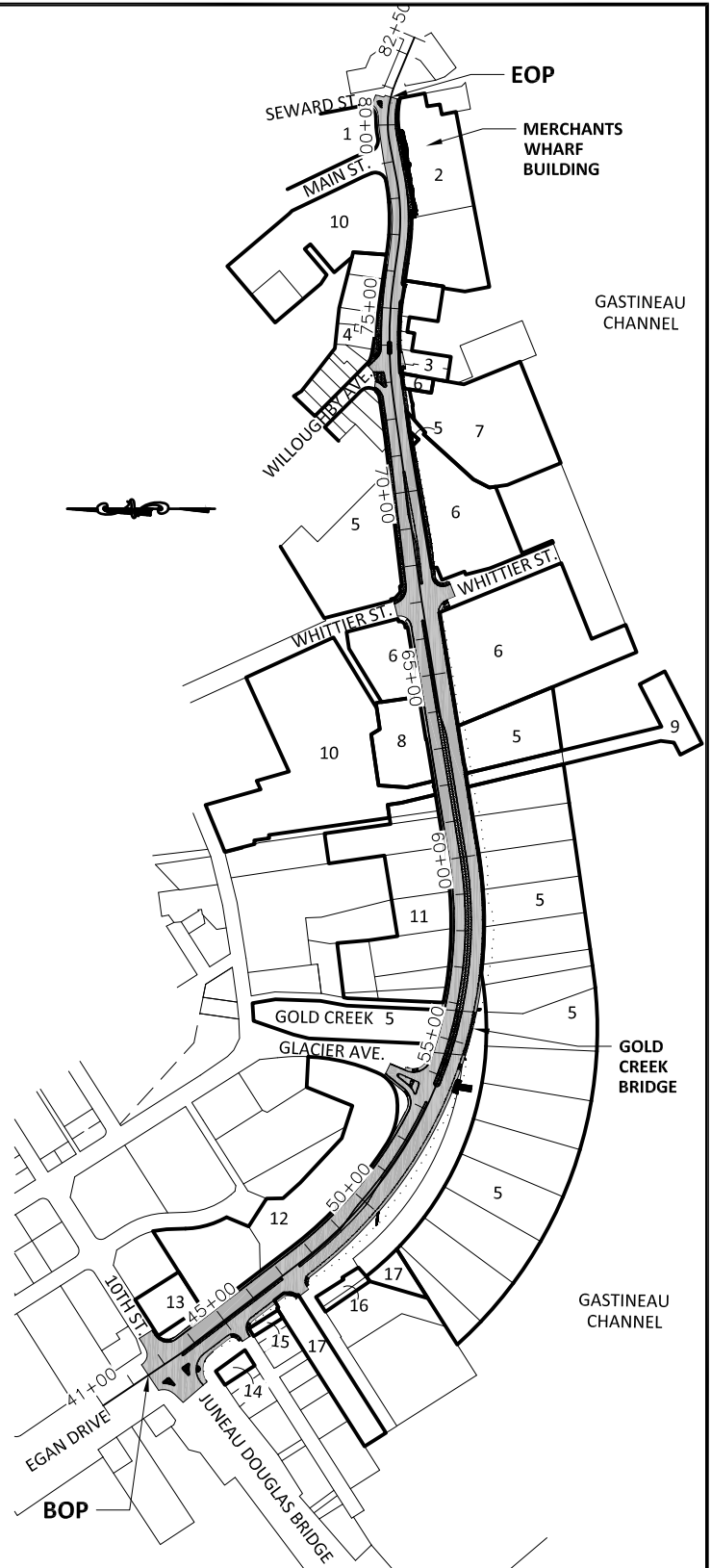
DATE: MAY 2017 SHEET 1 OF 8

PROPERTY OWNERS	
1	SEALASKA CORPORATION
2	MERCHANTS WHARF LLC
3	CULTURAL PRESERVATION INC
4	YC RIVERGOLD HOTEL LLC
5	CITY & BROUGH OF JUNEAU
6	ALASKA MENTAL HEALTH TRUST AUTHORITY
7	U.S. DEPT. OF COMMERCE & NOAA
8	MERL LLC & JDS INVESTMENTS LLC
9	AJT MINING PROPERTIES INC
10	STATE OF ALASKA
11	FOODLAND INC.
12	PARKSHORE CONDO ASSOCIATION
13	801 WEST 10TH INC.
14	TESSIE BALLE
15	ROBINO INC. & C/O SHANNON SCOTT
16	ALASKAN KIWIS LLC
17	JUNEAU I LLC

LEGEND

— OWNER BOUNDARY

— LOT LINES



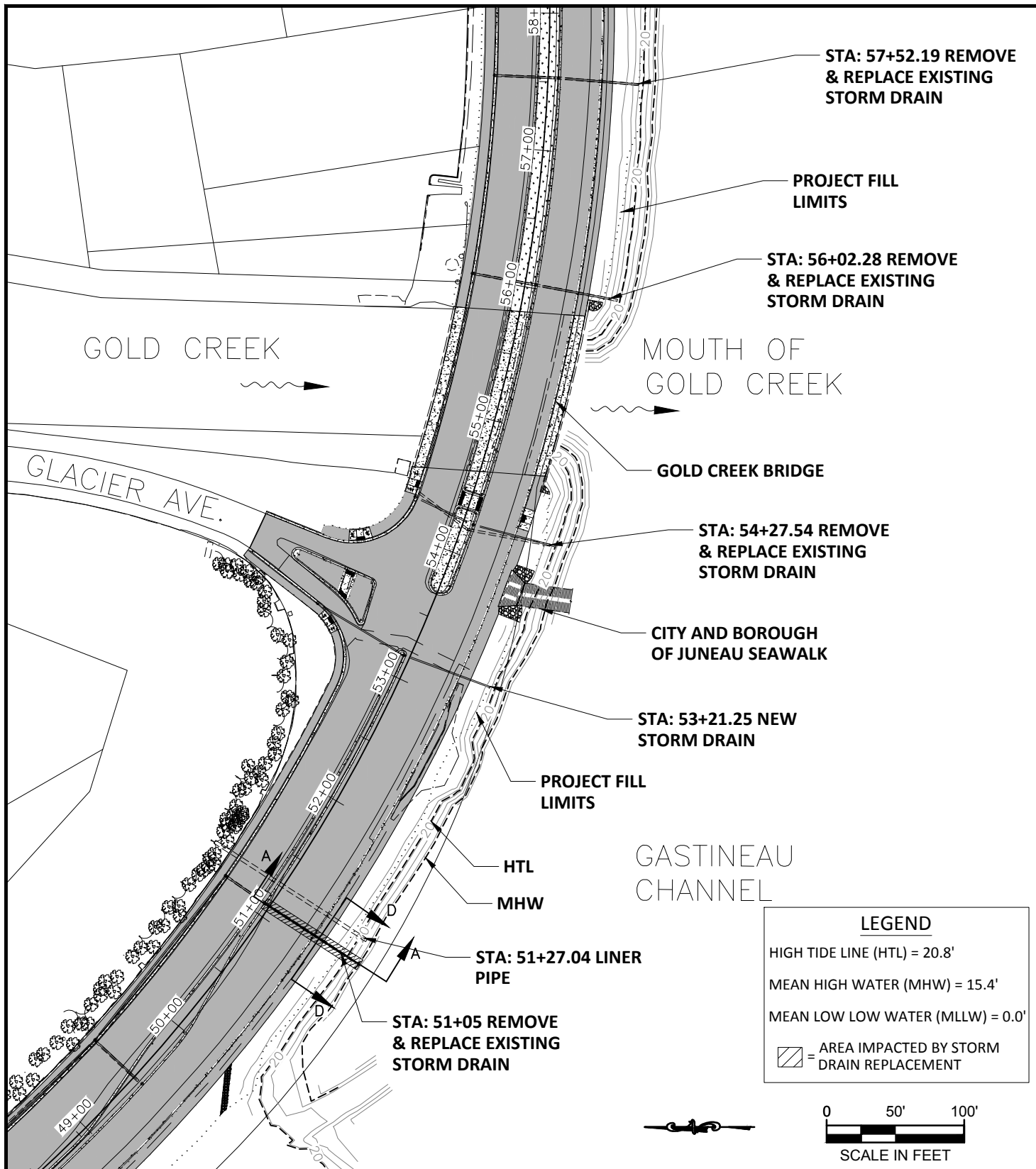
ADJACENT PROPERTY OWNERS:
 MERCHANTS WHARF LLC CITY AND BOROUGH OF JUNEAU
 2 MARINE WAY, STE 201 155 S. SEWARD ST.
 JUNEAU, AK 99801 JUNEAU, AK 99801
 AJT MINING PROPERTIES, INC
 5601 TONGARD CT
 JUNEAU, AK 99801

WATER BODIES:
 GASTINEAU CHANNEL & GOLD CREEK

PROPERTY OWNERS

APPLICATION BY:
 ALASKA STATE DEPT. OF TRANSPORTATION
 AND PUBLIC FACILITIES
 DESIGN & ENGINEERING SERVICES DIVISION
 SOUTHCOAST REGION

69393 EGAN DRIVE IMPROVEMENTS
 MAIN STREET TO 10TH STREET
 AT: JUNEAU, ALASKA
 LOCATED IN: TOWNSHIP 41 SOUTH,
 RANGE 67 EAST
 MERIDIAN, ALASKA
 DATE: APRIL 2017 SHEET 2 OF 8



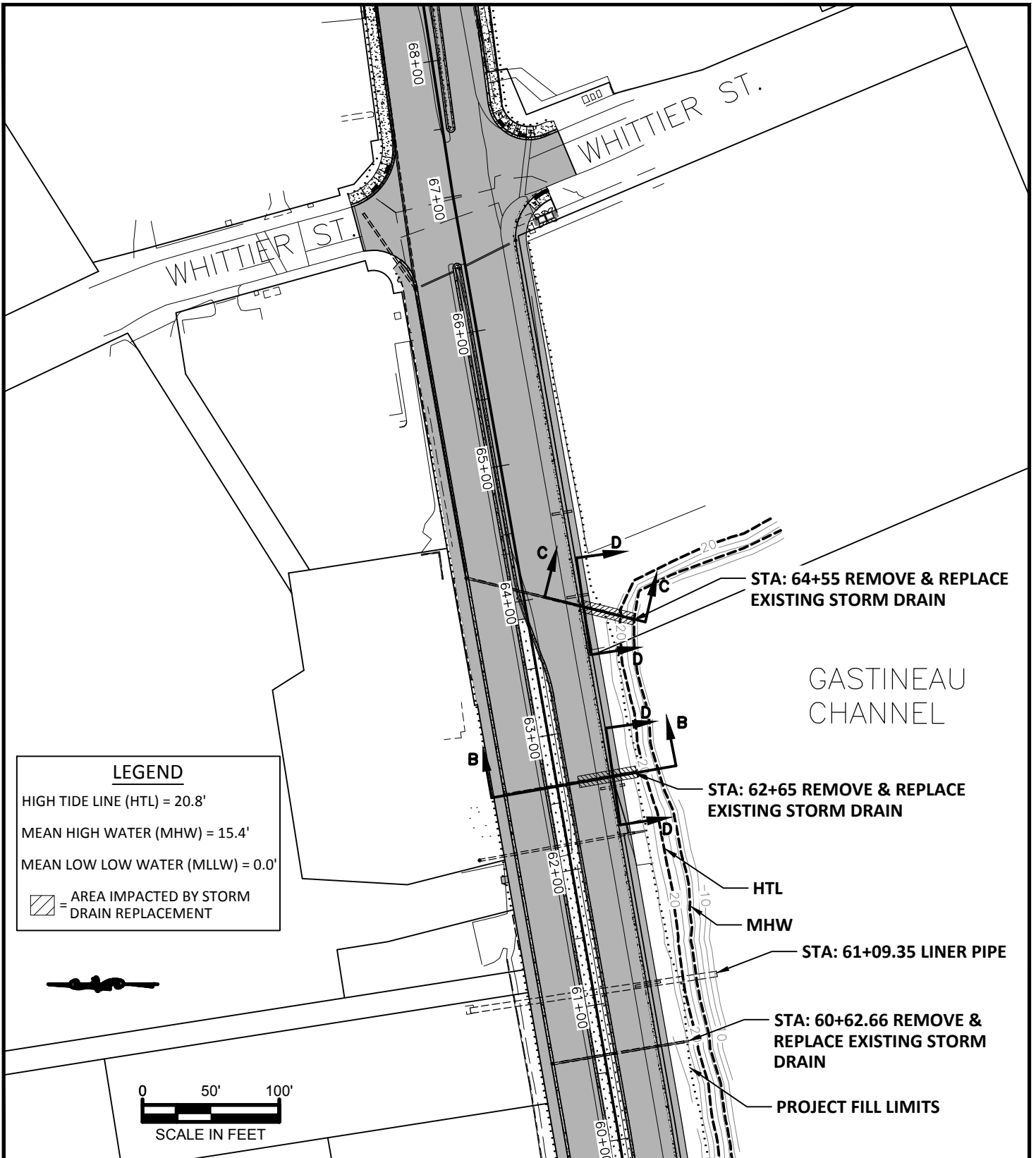
ADJACENT PROPERTY OWNERS:
 MERCHANTS WHARF LLC CITY AND BOROUGH OF JUNEAU
 2 MARINE WAY, STE 201 155 S. SEWARD ST.
 JUNEAU, AK 99801 JUNEAU, AK 99801
 AJT MINING PROPERTIES, INC
 5601 TONGARD CT
 JUNEAU, AK 99801

WATER BODIES:
 GASTINEAU CHANNEL & GOLD CREEK

PLAN VIEW 1

APPLICATION BY:
 ALASKA STATE DEPT. OF TRANSPORTATION
 AND PUBLIC FACILITIES
 DESIGN & ENGINEERING SERVICES DIVISION
 SOUTHCOAST REGION

69393 EGAN DRIVE IMPROVEMENTS
 MAIN STREET TO 10TH STREET
AT: JUNEAU, ALASKA
LOCATED IN: TOWNSHIP 41 SOUTH,
 RANGE 67 EAST
 MERIDIAN, ALASKA
DATE: MAY 2017 **SHEET** 3 **OF** 8



LEGEND

HIGH TIDE LINE (HTL) = 20.8'

MEAN HIGH WATER (MHW) = 15.4'

MEAN LOW LOW WATER (MLLW) = 0.0'

= AREA IMPACTED BY STORM DRAIN REPLACEMENT



ADJACENT PROPERTY OWNERS:

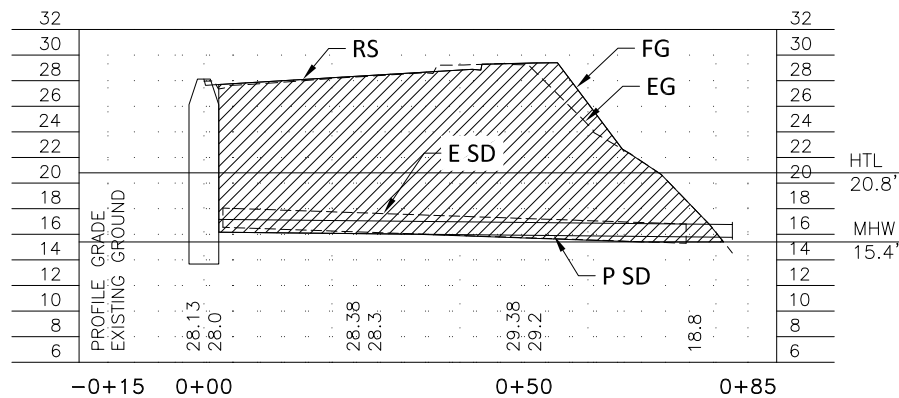
MERCHANTS WHARF LLC 2 MARINE WAY, STE 201 JUNEAU, AK 99801	CITY AND BOROUGH OF JUNEAU 155 S. SEWARD ST. JUNEAU, AK 99801
AJT MINING PROPERTIES, INC 5601 TONGARD CT JUNEAU, AK 99801	

WATER BODIES:
GASTINEAU CHANNEL & GOLD CREEK

PLAN VIEW 2

APPLICATION BY:
ALASKA STATE DEPT. OF TRANSPORTATION
AND PUBLIC FACILITIES
DESIGN & ENGINEERING SERVICES DIVISION
SOUTHCOAST REGION

69393 EGAN DRIVE IMPROVEMENTS
MAIN STREET TO 10TH STREET
AT: JUNEAU, ALASKA
LOCATED IN: TOWNSHIP 41 SOUTH,
RANGE 67 EAST
MERIDIAN, ALASKA
DATE: MAY 2017 SHEET 4 OF 8

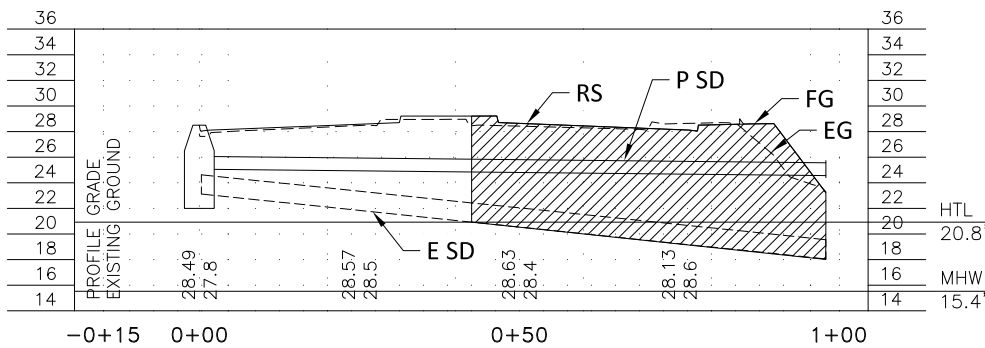


LEGEND

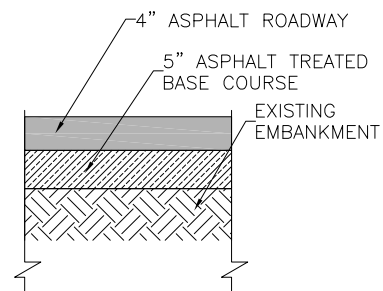
HTL = HIGH TIDE LINE
 MHW = MEAN HIGH WATER
 FG = FINISHED GROUND
 EG = EXISTING GROUND
 RS = ROADWAY SECTION
 P SD = PROPOSED STORM DRAIN
 E SD = EXISTING STORM DRAIN

▨ = FILL ABOVE MHW
 ▩ = FILL BELOW MHW

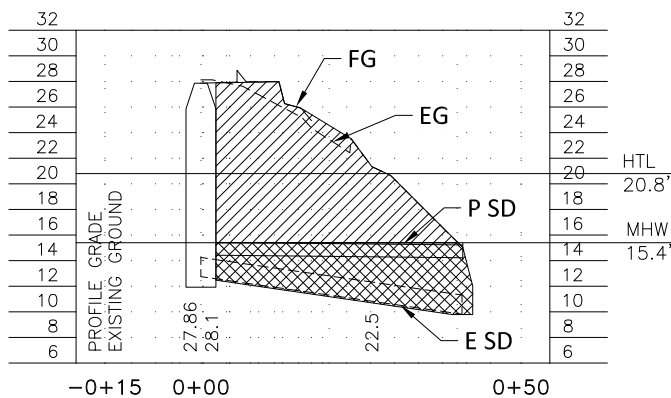
SECTION A-A
 STA: 51+05



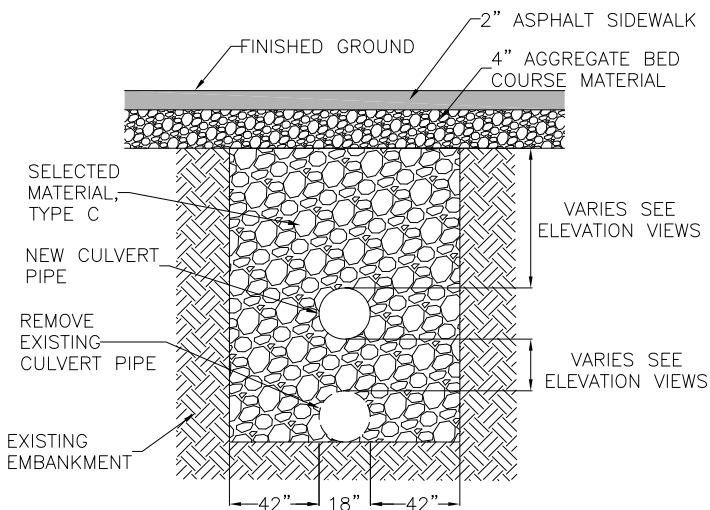
SECTION B-B
 STA: 62+65



ROADWAY SECTION



SECTION C-C
 STA: 64+55



SECTION D-D
 SIDEWALK SECTION

NOT TO SCALE

ADJACENT PROPERTY OWNERS:

MERCHANTS WHARF LLC CITY AND BOROUGH OF JUNEAU
 2 MARINE WAY, STE 201 155 S. SEWARD ST.
 JUNEAU, AK 99801 JUNEAU, AK 99801
 AJT MINING PROPERTIES, INC
 5601 TONGARD CT
 JUNEAU, AK 99801

WATER BODIES:

GASTINEAU CHANNEL & GOLD CREEK

ELEVATION VIEW 1

APPLICATION BY:

ALASKA STATE DEPT. OF TRANSPORTATION
 AND PUBLIC FACILITIES
 DESIGN & ENGINEERING SERVICES DIVISION
 SOUTHCOAST REGION

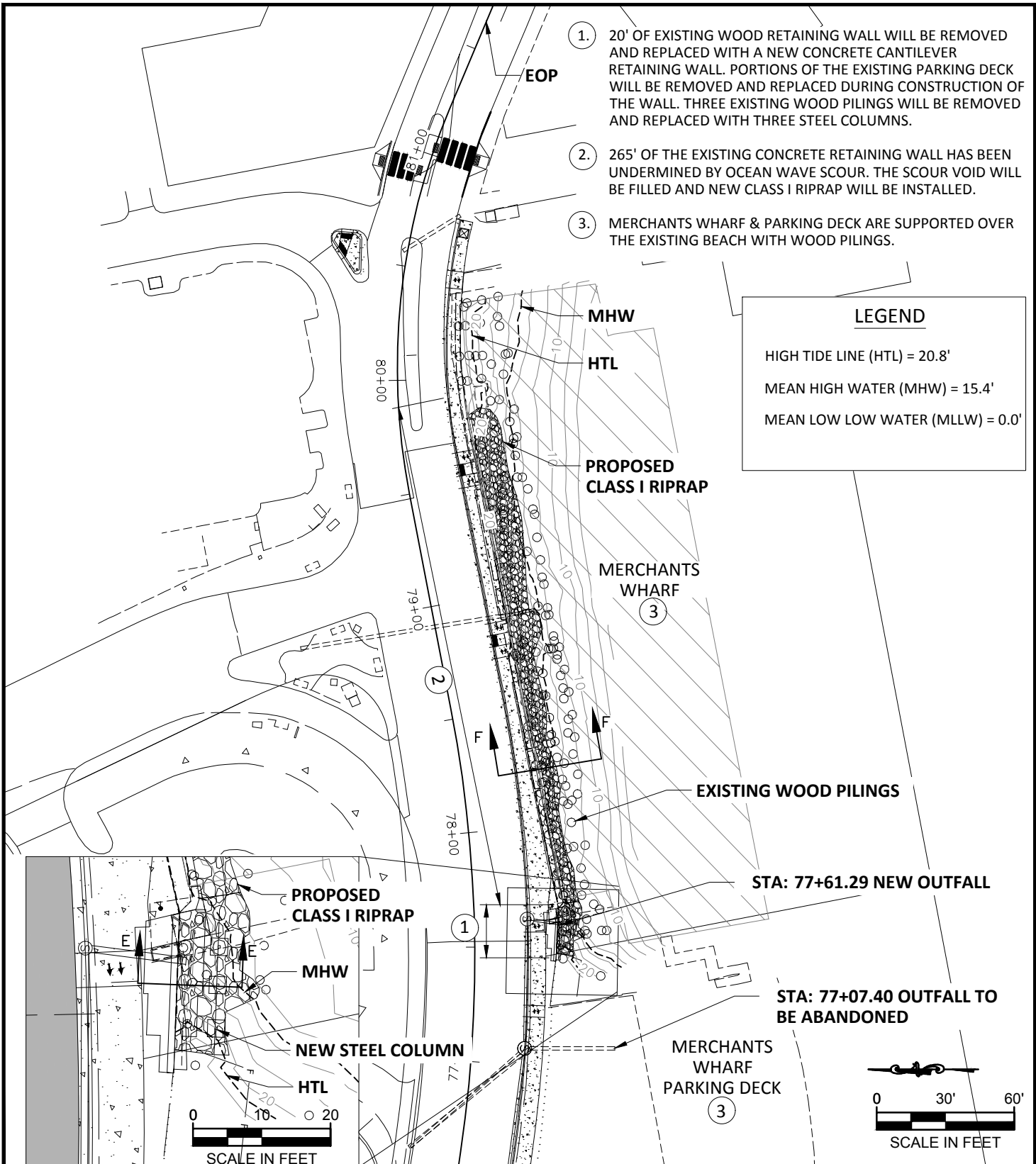
69393 EGAN DRIVE IMPROVEMENTS
 MAIN STREET TO 10TH STREET

AT: JUNEAU, ALASKA

LOCATED IN: TOWNSHIP 41 SOUTH,
 RANGE 67 EAST
 MERIDIAN, ALASKA

DATE: MAY 2017

SHEET 5 OF 8



ADJACENT PROPERTY OWNERS:

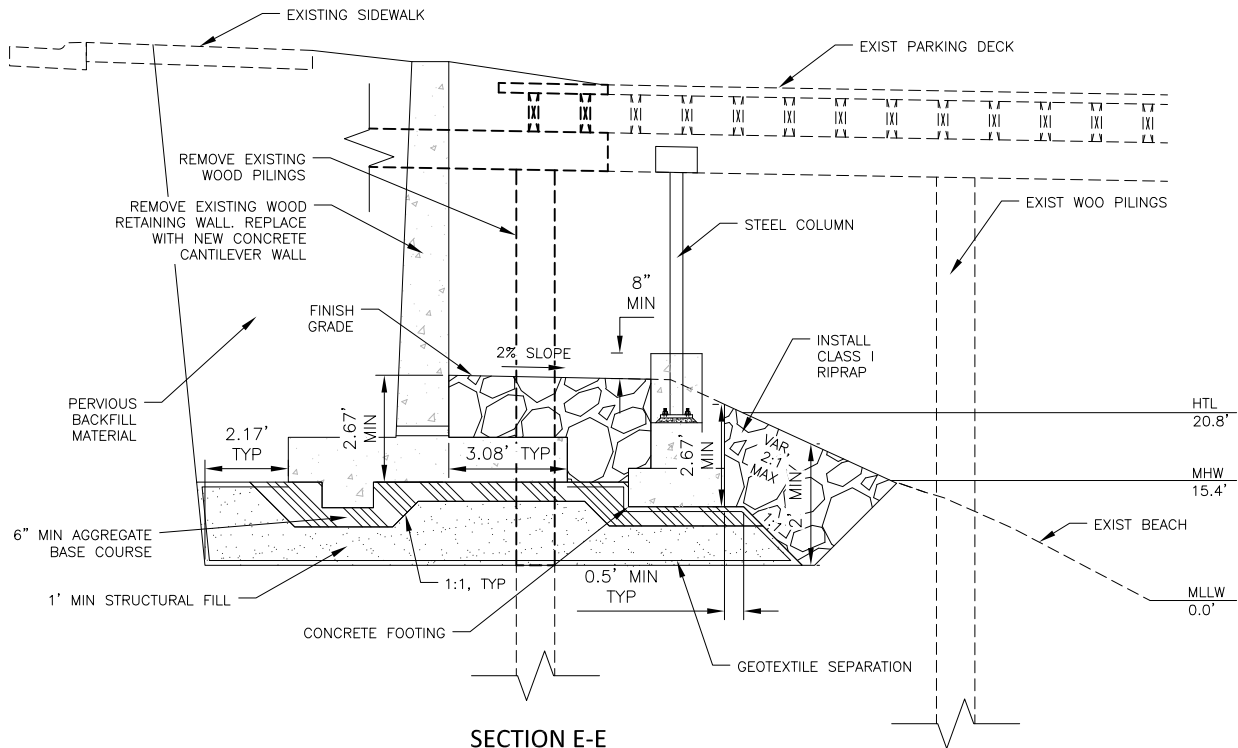
MERCHANTS WHARF LLC 2 MARINE WAY, STE 201 JUNEAU, AK 99801	CITY AND BOROUGH OF JUNEAU 155 S. SEWARD ST. JUNEAU, AK 99801
AJT MINING PROPERTIES, INC 5601 TONGARD CT JUNEAU, AK 99801	

WATER BODIES:
 GASTINEAU CHANNEL & GOLD CREEK

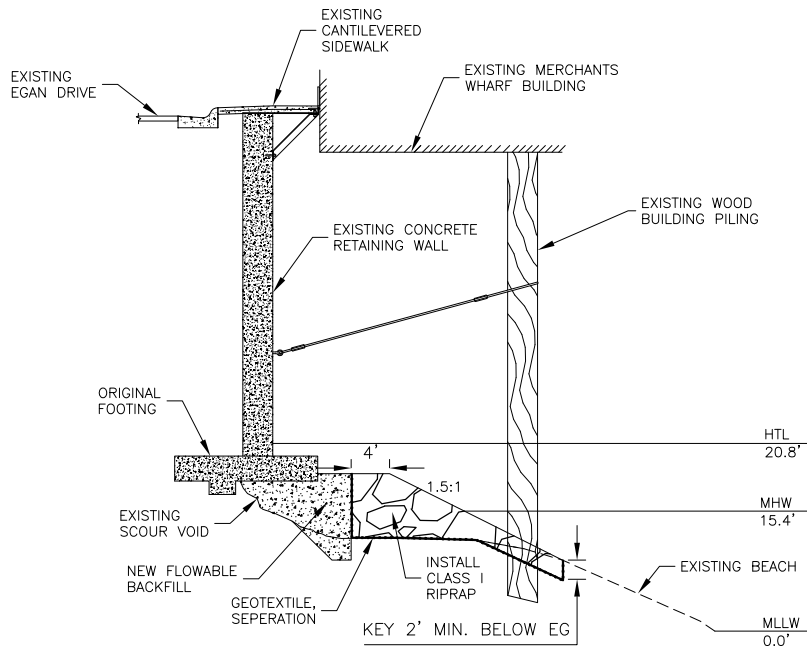
PLAN VIEW 3

APPLICATION BY:
 ALASKA STATE DEPT. OF TRANSPORTATION
 AND PUBLIC FACILITIES
 DESIGN & ENGINEERING SERVICES DIVISION
 SOUTHCOAST REGION

69393 EGAN DRIVE IMPROVEMENTS
 MAIN STREET TO 10TH STREET
AT: JUNEAU, ALASKA
LOCATED IN: TOWNSHIP 41 SOUTH,
 RANGE 67 EAST
 MERIDIAN, ALASKA
DATE: MAY 2017 **SHEET** 6 **OF** 8



SECTION E-E



SECTION F-F

NOT TO SCALE

ADJACENT PROPERTY OWNERS:
 MERCHANTS WHARF LLC CITY AND BOROUGH OF JUNEAU
 2 MARINE WAY, STE 201 155 S. SEWARD ST.
 JUNEAU, AK 99801 JUNEAU, AK 99801
 AJT MINING PROPERTIES, INC
 5601 TONGARD CT
 JUNEAU, AK 99801
WATER BODIES:
 GASTINEAU CHANNEL & GOLD CREEK

ELEVATION VIEW 2
 APPLICATION BY:
 ALASKA STATE DEPT. OF TRANSPORTATION
 AND PUBLIC FACILITIES
 DESIGN & ENGINEERING SERVICES DIVISION
 SOUTHCOAST REGION

69393 EGAN DRIVE IMPROVEMENTS
 MAIN STREET TO 10TH STREET
 AT: JUNEAU, ALASKA
 LOCATED IN: TOWNSHIP 41 SOUTH,
 RANGE 67 EAST
 MERIDIAN, ALASKA
 DATE: MAY 2017 SHEET 7 OF 8

STORM DRAIN REPLACEMENT IMPACTS SUMMARY

LOCATION	AREA (ACRES)	EMBANKMENT ¹ EXCAVATION/FILL BELOW MHW (CY)	EMBANKMENT ¹ EXCAVATION/FILL ABOVE MHW & BELOW HTL (CY)
<u>SECTION A-A</u> STA: 51+05	0.016	NA	252
<u>SECTION B-B</u> STA: 62+65	0.008	NA	189
<u>SECTION C-C</u> STA: 64+55	0.008	181	111
CUMULATIVE TOTALS=	0.032	181	552

1) EMBANKMENT INCLUDES ROADWAY & SIDEWALK SECTIONS, WHICH CONSIST OF: SELECTED MATERIAL TYPE C, AGGREGATE BASE COURSE, ASPHALT, ASPHALT TREADED BASE COURSE, CONCRETE CURB & GUTTER.

NEW CONCRETE CANTILEVER RETAINING WALL IMPACTS SUMMARY

MATERIAL TYPE	AREA (ACRES)	FILL BELOW MHW (CY)	FILL ABOVE MHW & BELOW HTL (CY)
CONCRETE	0.004	4.3	9.7
STRUCTURAL FILL	0.004	3.7	4.2
AGGREGATE BASE COURSE	0.004	1.9	1.6
CLASS I RIPRAP	0.005	7.4	7.7
CUMULATIVE TOTALS=	0.016	17.3	23.2

EXISTING CONCRETE RETAINING WALL REPAIR IMPACTS SUMMARY

MATERIAL TYPE	AREA (ACRES)	FILL BELOW MHW (CY)	FILL ABOVE MHW & BELOW HTL (CY)
FLOWABLE BACKFILL	0.011	NA	14.28
CLASS I RIPRAP	0.045	5.5	87.72
CUMULATIVE TOTALS=	0.056	5.5	102

<p><u>ADJACENT PROPERTY OWNERS:</u> MERCHANTS WHARF LLC CITY AND BOROUGH OF JUNEAU 2 MARINE WAY, STE 201 155 S. SEWARD ST. JUNEAU, AK 99801 JUNEAU, AK 99801</p> <p>AJT MINING PROPERTIES, INC 5601 TONGARD CT JUNEAU, AK 99801</p> <p><u>WATER BODIES:</u> GASTINEAU CHANNEL & GOLD CREEK</p>	<p>DATA</p> <p>APPLICATION BY:</p> <p>ALASKA STATE DEPT. OF TRANSPORTATION AND PUBLIC FACILITIES DESIGN & ENGINEERING SERVICES DIVISION SOUTHCOAST REGION</p>	<p>69393 EGAN DRIVE IMPROVEMENTS MAIN STREET TO 10TH STREET AT: JUNEAU, ALASKA</p> <p>LOCATED IN: TOWNSHIP 41 SOUTH, RANGE 67 EAST MERIDIAN, ALASKA</p> <p>DATE: MAY 2017 SHEET <u>8</u> OF <u>8</u></p>
---	--	---