

REFERENCE ONLY

ELECTRICAL ENGINEER
 RSA ENGINEERING, INC.
 670 W. Fireweed Ln., Suite 200
 Anchorage, AK 99503-2516
 Phone (907) 276-0521 Fax (907) 276-1751

State of Alaska
 DOC Arc Flash Survey and Report
 Ketchikan Correctional Center
 Ketchikan, AK

REVISIONS:

DRAWN BY: RWM
 CHECKED BY: JAM
 DATE: 10/13/2017
 JOB NUMBER: L6206
 DWG FILE: L6206_ESERIES

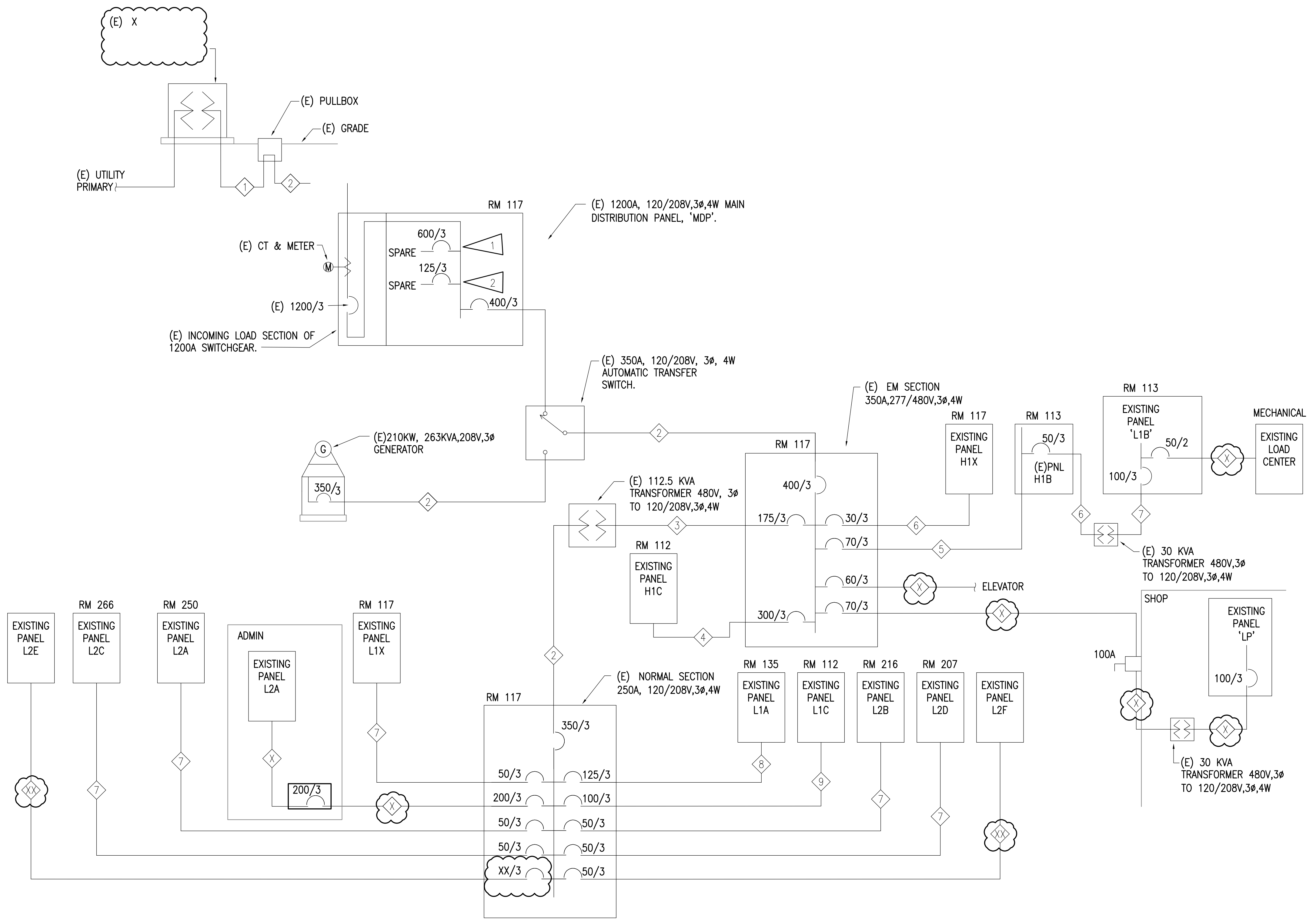
DRAWING TITLE:
 KCC POWER ONE-LINE DIAGRAM

SHEET:
 KC0.1

FEEDER SCHEDULE	
FEEDER TAG	CONDUIT, PHASE CONDUCTORS, NEUTRAL, GROUND ISOLATED GROUND, CONDUCTOR TYPE CU OR AL
1	(E) 3.5°C, 3#2/0-15KV, 1#2/0
2	(E) 3.5°C, 4#500 kcmil
3	(E) 2°C, X#3/0, 1#6 GND
4	(E) 3°C, 3#500, 1#300
5	(E) 1.25°C, 4#4
6	(E) .75°C, 4#10
7	(E) 1.25°C, 4#6
8	(E) 2°C, 4#1/0
9	(E) 1.5°C, 4#2

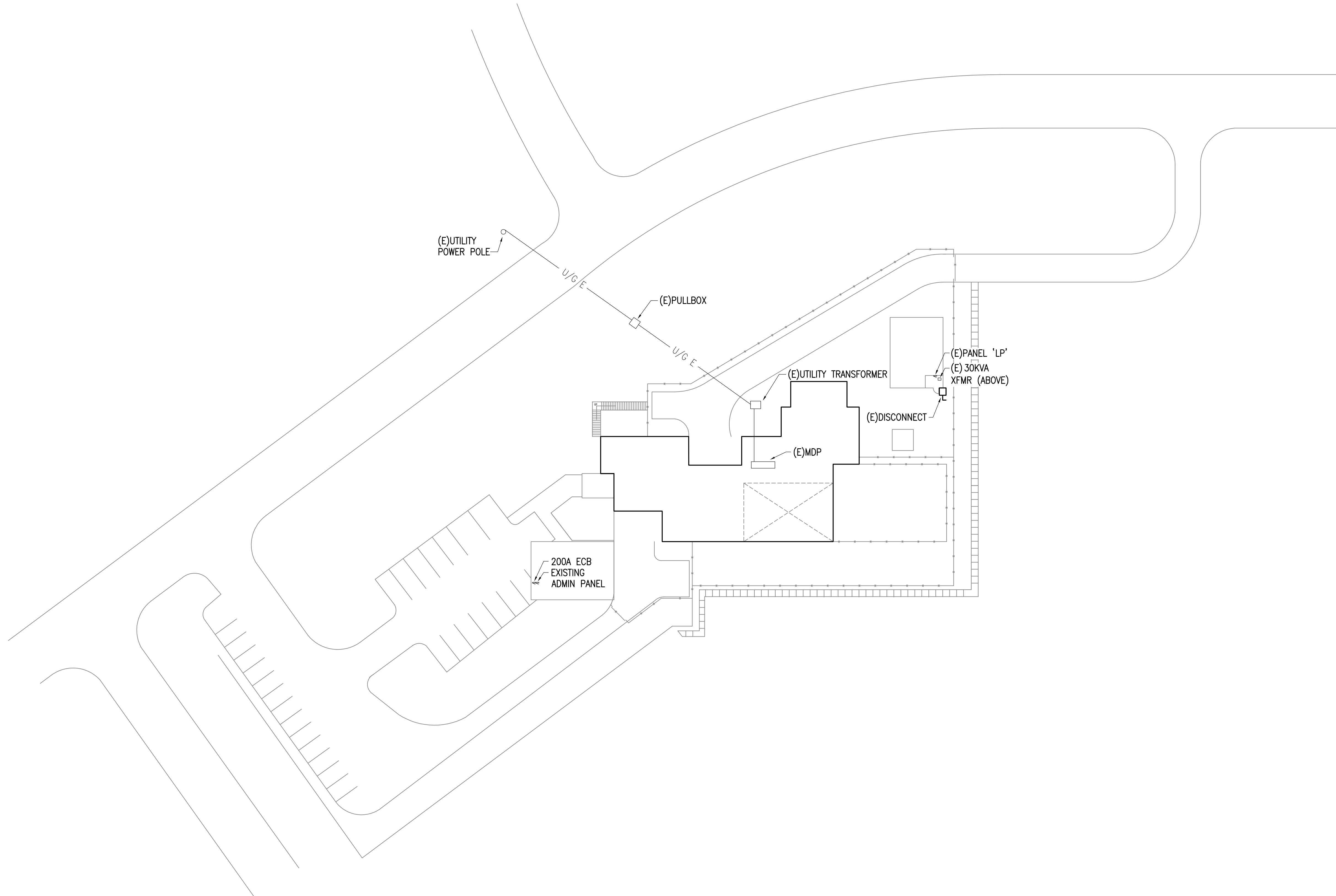
SHEET NOTES:

1. CIRCUIT BREAKER MARKED 'ELECTRIC BOILER'. NO BOILER INSTALLED.
2. CIRCUIT BREAKER MARKED 'ELECTRIC CHILLER'. NO CHILLER INSTALLED.



1 KCC POWER ONE-LINE DIAGRAM
 NO SCALE

0"
1"
2"
3"



1 KCC BUILDING MAP - SITE
1" = 30' - 0"

REFERENCE
ONLY

ELECTRICAL ENGINEER
RSA ENGINEERING, INC.
670 W. Fireweed Ln., Suite 200
Anchorage, AK 99503-2516
Phone (907) 276-0521 Fax (907) 276-1751

State of Alaska
DOC Arc Flash Survey and Report
Ketchikan Correctional Center
Ketchikan, AK

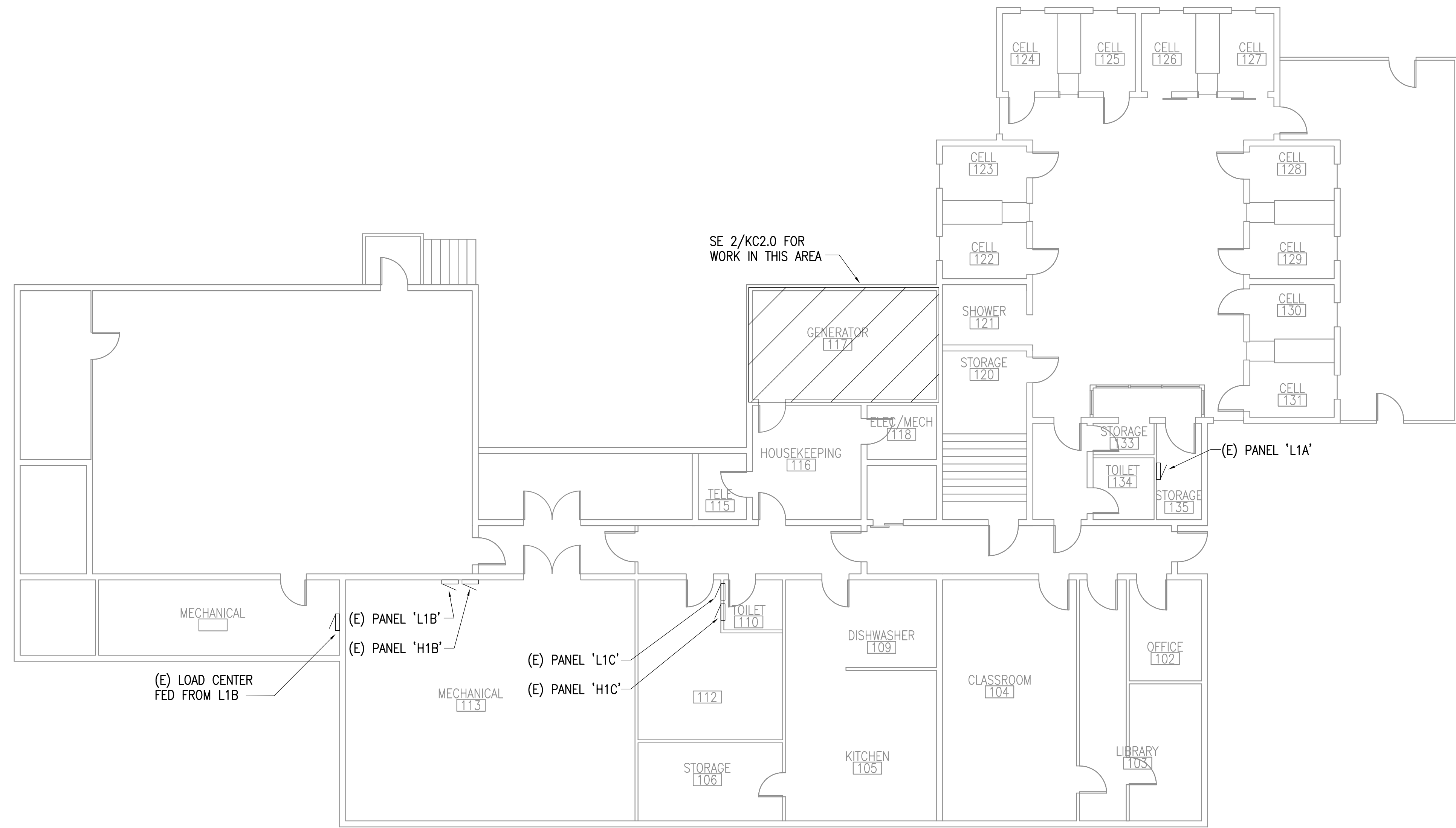
REVISIONS:

DRAWN BY: MJC/RWM
CHECKED BY: JAM
DATE: 10/13/2017
JOB NUMBER: L6206
DWG FILE: L6206_ESERIES

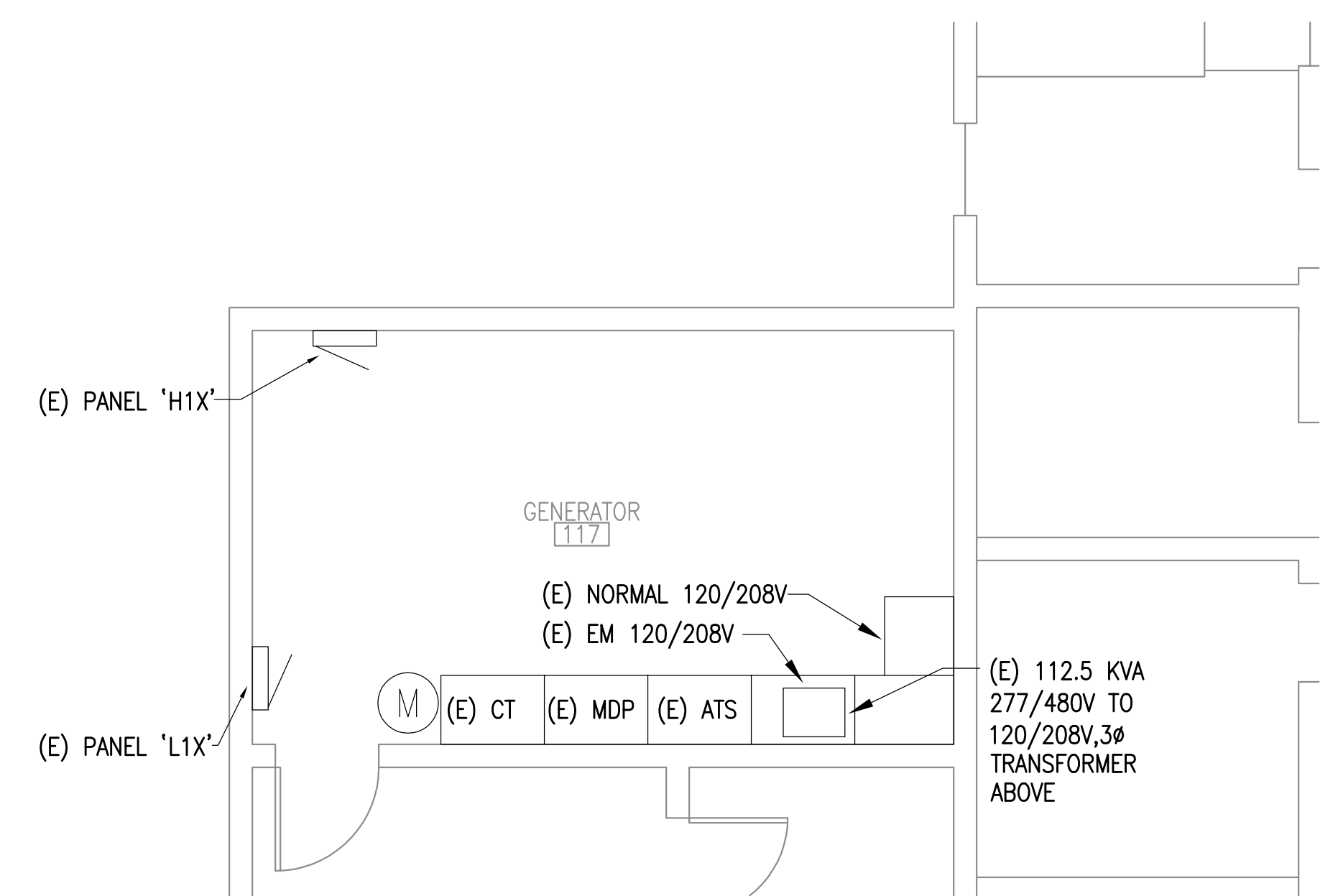
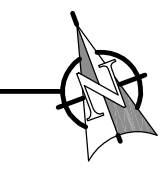
DRAWING TITLE:
KCC BUILDING MAP - SITE

SHEET:
KC1.0

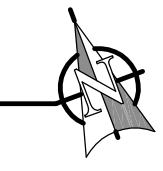
0"
1"
2"
3"



1 PANEL MAP - 1ST. FLOOR
1/8" = 1'-0"



1 ENLARGED PLAN - GENERATOR ROOM 117
1/8" = 1'-0"



REFERENCE
ONLY

ELECTRICAL ENGINEER
RSA ENGINEERING, INC.
670 W. Fireweed Ln., Suite 200
Anchorage, AK 99503-2516
Phone (907) 276-0521 Fax (907) 276-1751

State of Alaska
DOC Arc Flash Survey and Report
Ketchikan Correctional Center
Ketchikan, AK

REVISIONS:

DRAWN BY: MJC/RWM
CHECKED BY: JAM
DATE: 10/13/2017
JOB NUMBER: L6206
DWG FILE: L6206_ESERIES

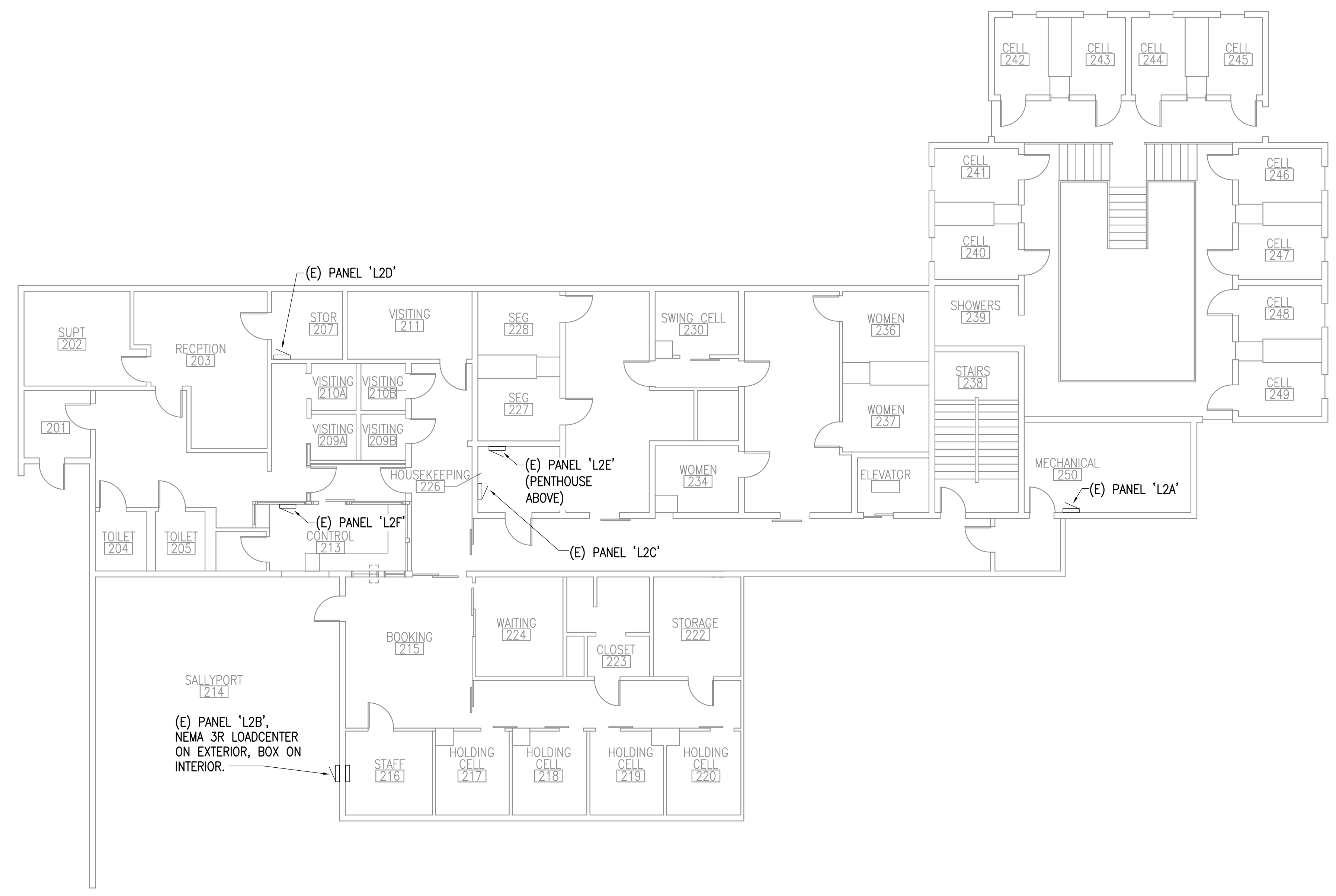
DRAWING TITLE:
KCC PANEL MAP - 1ST.
FLOOR

SHEET:
KC2.0

0"
1"
2"
3"

REFERENCE
ONLY

ELECTRICAL ENGINEER
RSA ENGINEERING, INC.
670 W. Fireweed Ln., Suite 200
Anchorage, AK 99503-2516
Phone (907) 276-0521 Fax (907) 276-1751



1 PANEL MAP - 2ND. FLOOR
1/8" = 1'-0"



State of Alaska
DOC Arc Flash Survey and Report
Ketchikan Correctional Center
Ketchikan, AK

REVISIONS:

DRAWN BY: MJC/RWM
CHECKED BY: JAM
DATE: 10/13/2017
JOB NUMBER: L6206
DWG FILE: L6206_ESERIES

DRAWING TITLE:
KCC PANEL MAP - 2ND.
FLOOR

SHEET:
KC2.1