

0"  
1"  
2"  
3"

REFERENCE ONLY

ELECTRICAL ENGINEER  
RSA ENGINEERING, INC.  
670 W. Fireweed Ln., Suite 200  
Anchorage, AK 99503-2516  
Phone (907) 276-0521 Fax (907) 276-1751

State of Alaska  
DOC Arc Flash Survey and Report  
Anvil Mountain Correctional Center  
Nome, AK

REVISIONS:

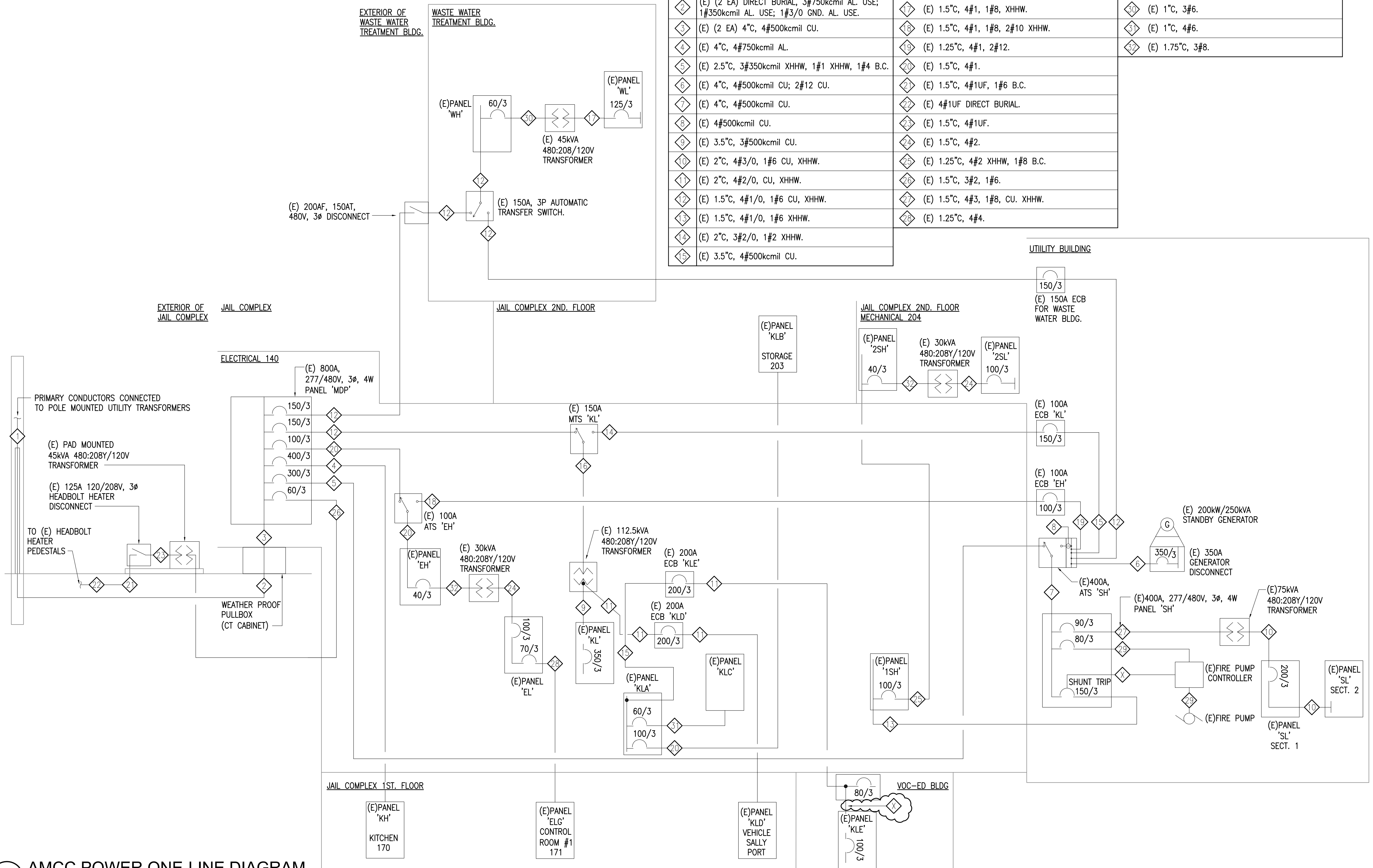
DRAWN BY: MJC  
CHECKED BY: JAM  
DATE: 10/13/2017  
JOB NUMBER: L6206  
DWG FILE: L6206\_ESERIES

DRAWING TITLE:  
AMCC POWER ONE-LINE  
DIAGRAM

SHEET:  
AM0.1

FEEDER SCHEDULE

| FEEDER TAG | CONDUIT, PHASE CONDUCTORS, NEUTRAL, GROUND, ISOLATED GROUND, CONDUCTOR TYPE CU OR AL |                                    |
|------------|--|------------------------------------|
| 1          | (E) (2 EA) 4" PVC, 3#750kcmil AL USE; 1#350kcmil AL USE; 1#3/0 GND. AL USE.          | 16 (E) 2"C, 3#2/0.                 |
| 2          | (E) (2 EA) DIRECT BURIAL, 3#750kcmil AL USE; 1#350kcmil AL USE; 1#3/0 GND. AL USE.   | 17 (E) 1.5"C, 4#1, 1#8, XHHW.      |
| 3          | (E) (2 EA) 4"C, 4#500kcmil CU.   | 18 (E) 1.5"C, 4#1, 1#8, 2#10 XHHW. |
| 4          | (E) 4"C, 4#750kcmil AL.  | 19 (E) 1.25"C, 4#1, 2#12.          |
| 5          | (E) 2.5"C, 3#350kcmil XHHW, 1#1 XHHW, 1#4 B.C.                                       | 20 (E) 1.5"C, 4#1.                 |
| 6          | (E) 4"C, 4#500kcmil CU; 2#12 CU.   | 21 (E) 1.5"C, 4#1UF, 1#6 B.C.      |
| 7          | (E) 4"C, 4#500kcmil CU.  | 22 (E) 4#1UF DIRECT BURIAL.        |
| 8          | (E) 4#500kcmil CU.   | 23 (E) 1.5"C, 4#1UF.               |
| 9          | (E) 3.5"C, 3#500kcmil CU.  | 24 (E) 1.5"C, 4#2.                 |
| 10         | (E) 2"C, 4#3/0, 1#6 CU, XHHW.  | 25 (E) 1.25"C, 4#2 XHHW, 1#8 B.C.  |
| 11         | (E) 2"C, 4#2/0, CU, XHHW.  | 26 (E) 1.5"C, 3#2, 1#6.            |
| 12         | (E) 1.5"C, 4#1/0, 1#6 CU, XHHW.  | 27 (E) 1.5"C, 4#3, 1#8, CU, XHHW.  |
| 13         | (E) 1.5"C, 4#1/0, 1#6 XHHW.  | 28 (E) 1.25"C, 4#4.                |
| 14         | (E) 2"C, 3#2/0, 1#2 XHHW.  |                                    |
| 15         | (E) 3.5"C, 4#500kcmil CU.  |                                    |

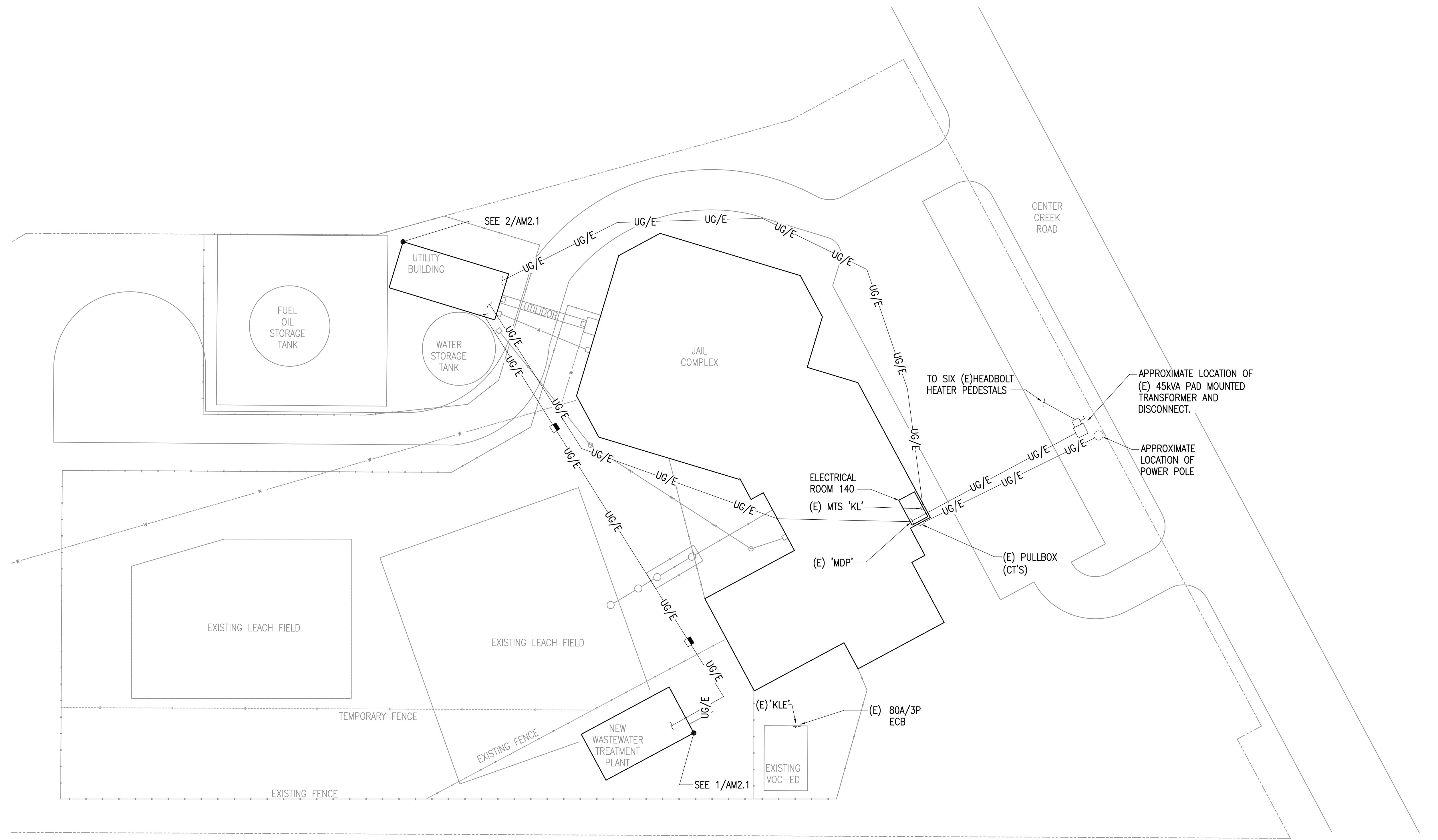


1 AMCC POWER ONE-LINE DIAGRAM  
NTS

0"  
1"  
2"  
3"

REFERENCE  
ONLY

ELECTRICAL ENGINEER  
RSA ENGINEERING, INC.  
670 W. Fireweed Ln., Suite 200  
Anchorage, AK 99503-2516  
Phone (907) 276-0521 Fax (907) 276-1751



State of Alaska  
 DOC Arc Flash Survey and Report  
 Anvil Mountain Correctional Center  
 Nome, AK

REVISIONS:

DRAWN BY: MJC  
 CHECKED BY: JAM  
 DATE: 10/13/2017  
 JOB NUMBER: L6206  
 DWG FILE: L6206\_ESERIES

DRAWING TITLE:  
 AMCC BUILDING MAP -  
 SITE

SHEET:  
AM1.0

**1** AMCC BUILDING MAP - SITE  
 1" = 30'-0"

REFERENCE ONLY

ELECTRICAL ENGINEER  
 RSA ENGINEERING, INC.  
 670 W. Fireweed Ln., Suite 200  
 Anchorage, AK 99503-2516  
 Phone (907) 276-0521 Fax (907) 276-1751

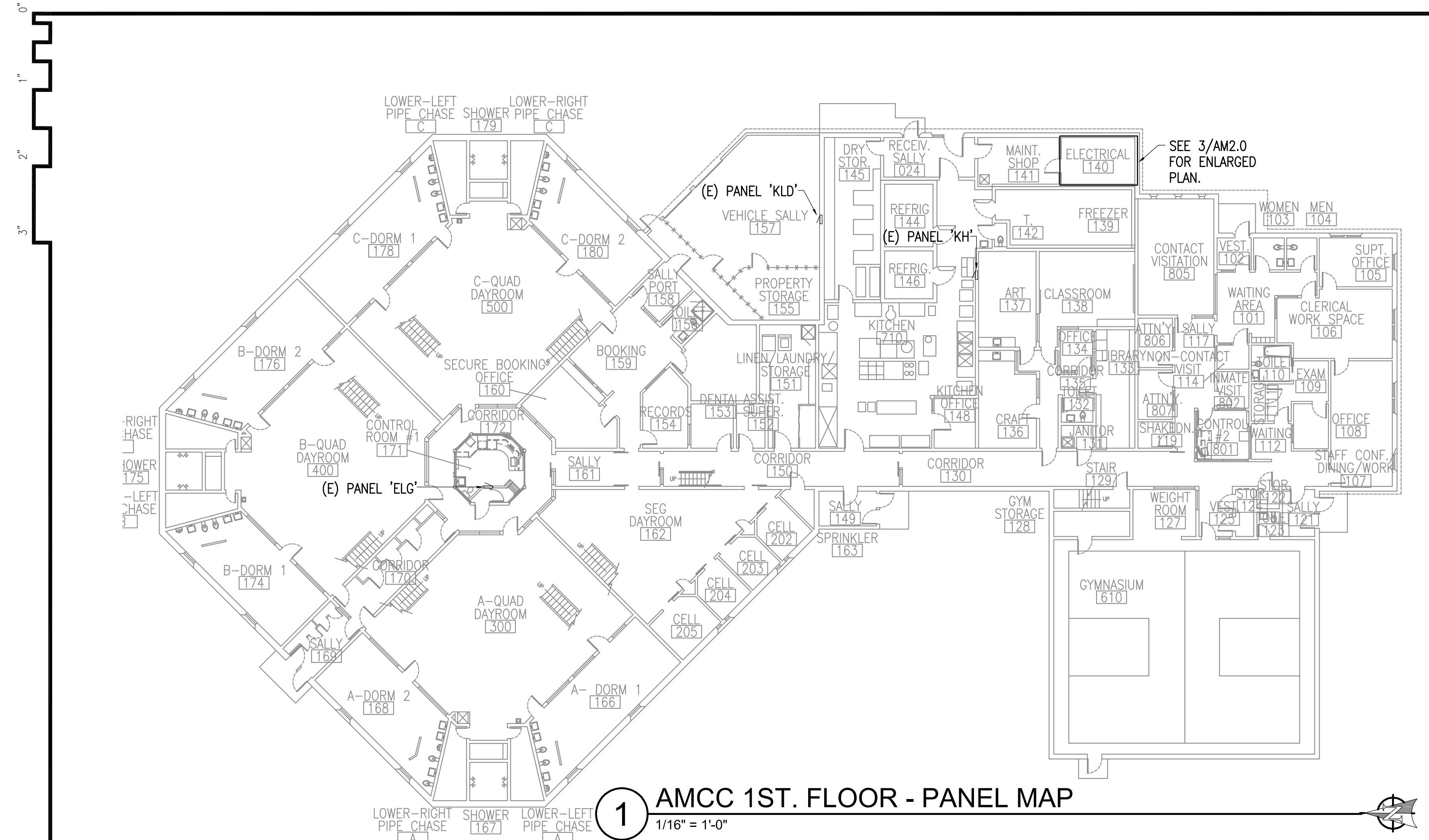
State of Alaska  
 DOC Arc Flash Survey and Report  
 Anvil Mountain Correctional Center  
 Nome, AK

REVISIONS:

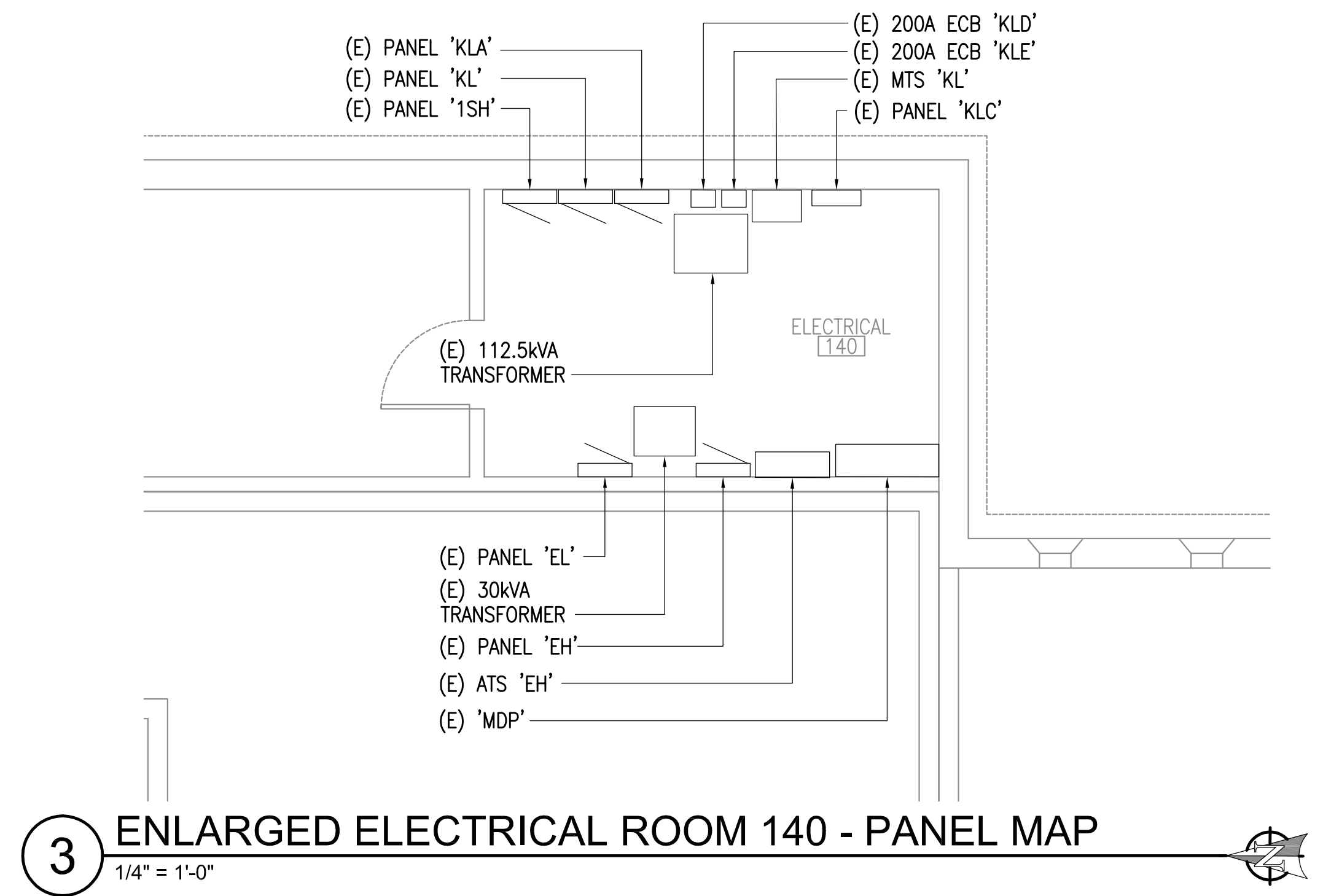
DRAWN BY: MJC  
 CHECKED BY: JAM  
 DATE: 10/13/2017  
 JOB NUMBER: L6206  
 DWG FILE: L6206\_ESERIES

DRAWING TITLE:  
 AMCC 1ST. & 2ND. FLOOR  
 - PANEL MAPS

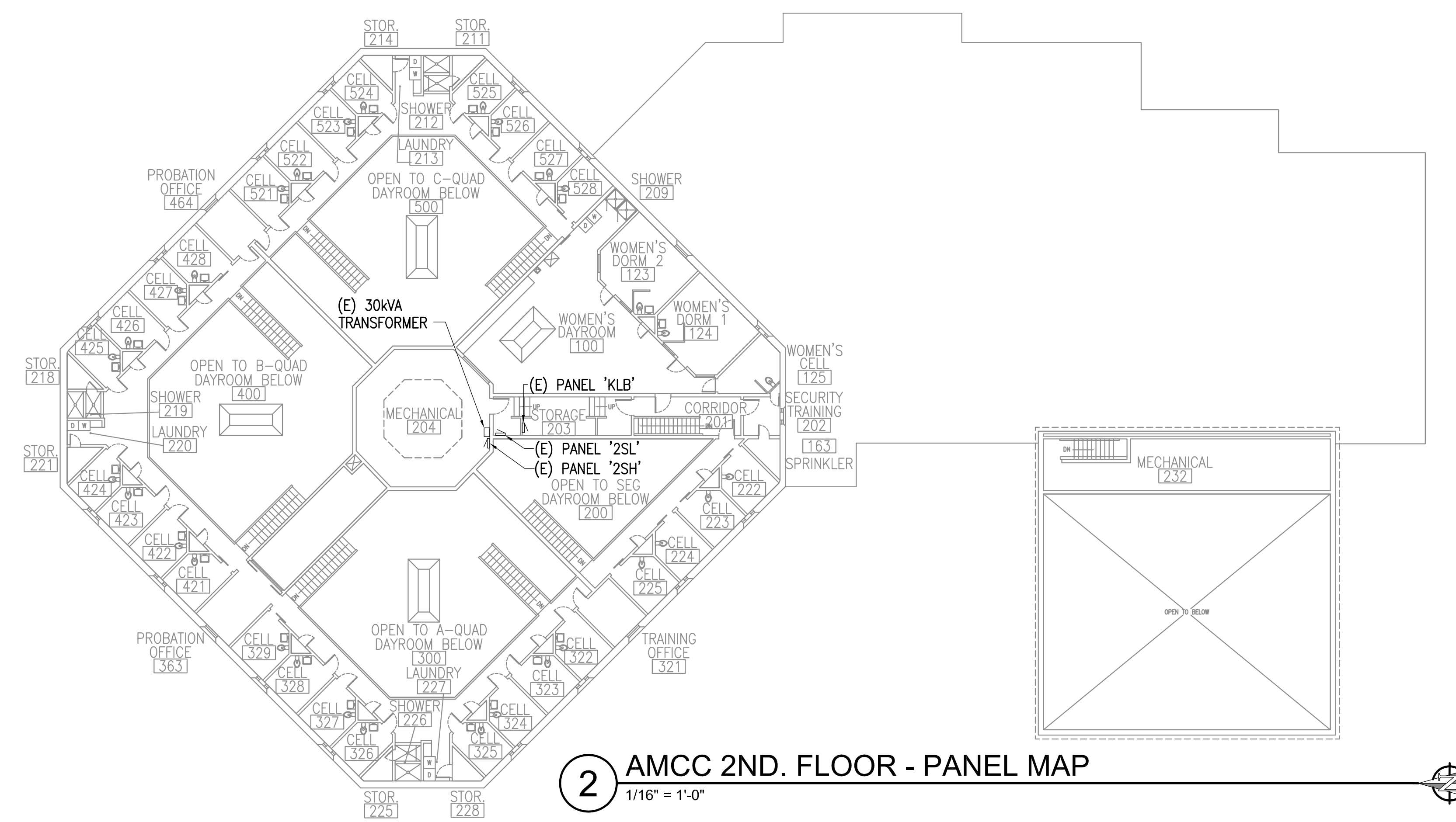
SHEET:  
 AM2.0



1 AMCC 1ST. FLOOR - PANEL MAP  
 1/16" = 1'-0"

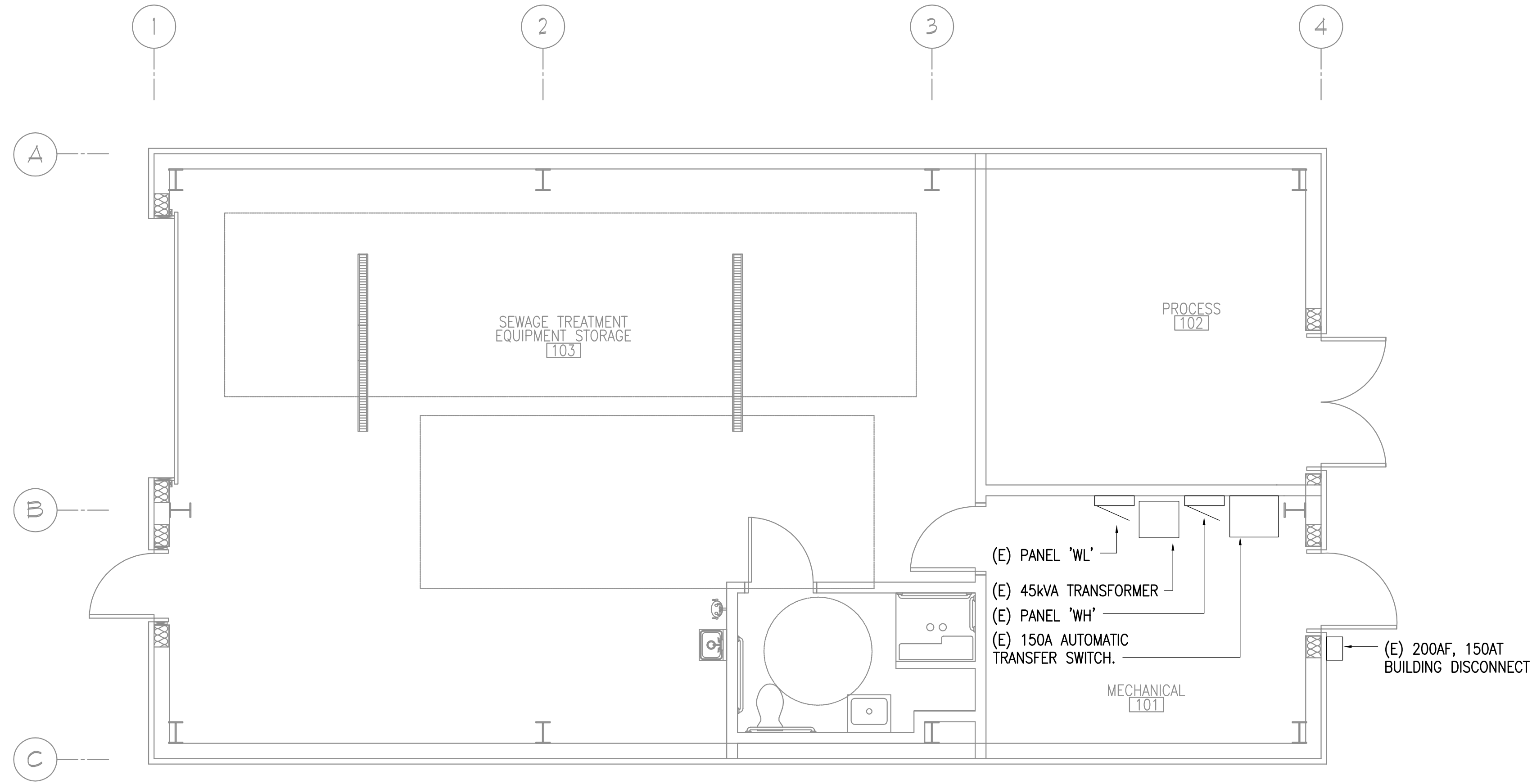


3 ENLARGED ELECTRICAL ROOM 140 - PANEL MAP  
 1/4" = 1'-0"

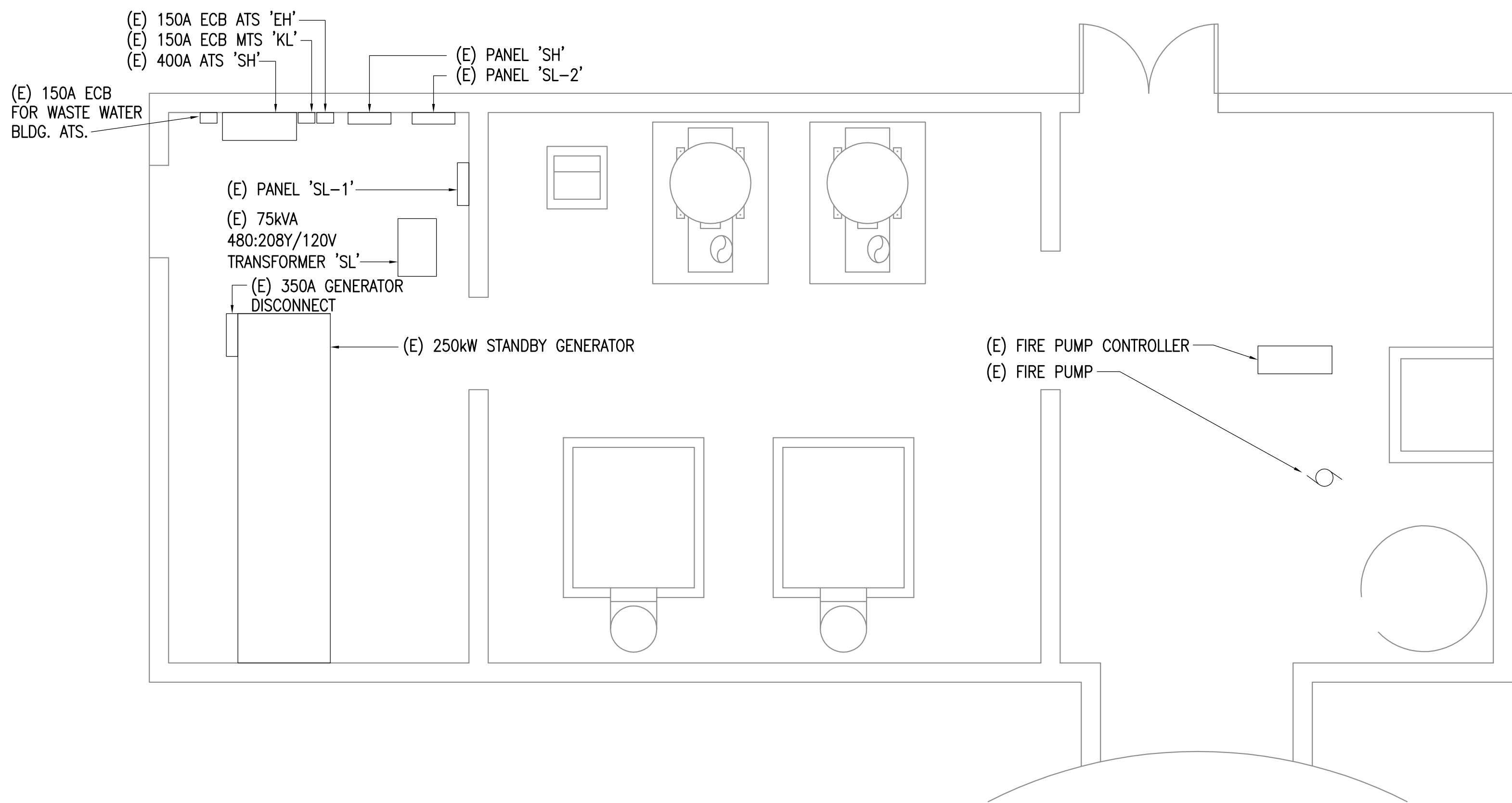


2 AMCC 2ND. FLOOR - PANEL MAP  
 1/16" = 1'-0"

0"  
1"  
2"  
3"



**1** AMCC WATER TREATMENT BUILDING - PANEL MAP  
1/4" = 1'-0"



**2** AMCC UTILITY BUILDING - PANEL MAP  
1/4" = 1'-0"

REFERENCE ONLY

ELECTRICAL ENGINEER  
RSA ENGINEERING, INC.  
670 W. Fireweed Ln., Suite 200  
Anchorage, AK 99503-2516  
Phone (907) 276-0521 Fax (907) 276-1751

State of Alaska  
DOC Arc Flash Survey and Report  
Anvil Mountain Correctional Center  
Nome, AK

REVISIONS:

DRAWN BY: MJC  
CHECKED BY: JAM  
DATE: 10/13/2017  
JOB NUMBER: L6206  
DWG FILE: L6206\_ESERIES

DRAWING TITLE:  
AMCC WATER TREATMENT & UTILITY BUILDING - PANEL MAPS

SHEET:  
AM2.1