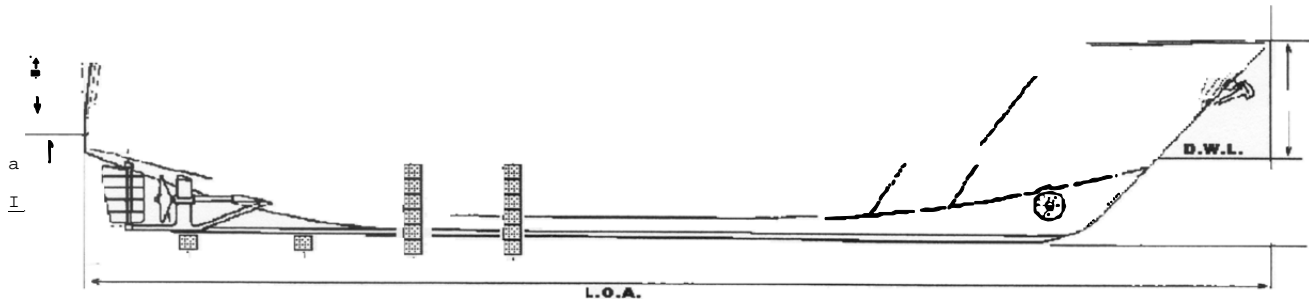


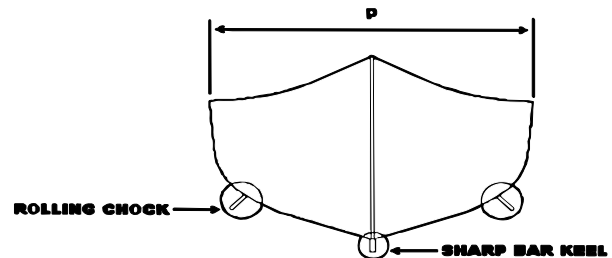
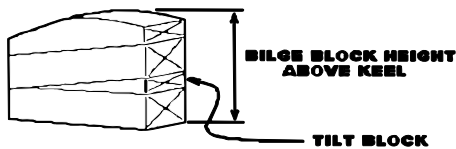
**VESSEL:** PIV STIMSON (previously the FIV PINNACLE)

**Dated:** 7-28-92

**Reprinted:** FOSS Shipyard Dock Number 2DD



NOT TO SCALE



#### DIMENSIONS

OIM "B":	11'-8"
OIM "C":	14'
OIM "D":	10'
OIM "E":	12'
OIM "F":	28'
OIM "G":	12'
OIM "H":	156'
OIM "K":	6'-1"
OIM "M":	16'-5"
OIM "N":	14'
OIM "O":	
OIM "P":	38'

#### BILGE BLOCK HEIGHTS

B	D	
1	10	24" INC 6TB-R
2	9	24" INC 6TB-R
3	8	24" INC 6TB-R
4	7	24" INC 6TB-R
5	6	24" INC 6TB-R

PRESET ALL BILGE BLOCKS  
15' FROM CENTERLINE OF  
KEEL TO OUTBOARD OF  
BILGE BLOCK PULL IN WHEN  
BOAT LANDS

#### NOTES:

##### ROLLING CHOCKS:

Yes, 36' to 85' forward of the stern  
22" lower than hull starboard side and  
37' to 96' and  
95' to 114' forward of stern  
22" lower than hull port side.

##### DROP SHOE:

No

##### KEEL COOLERS:

Rolling Chocks located 5" inboard of  
chine and extends 22" down.

##### TRANSDUCER:

Yes, 84' to 92' forward of stern  
5" lower than keel on keel no keel block