

GENERAL NOTES

1. SEE A511 FOR INTERIOR PARTITION TYPES.
2. SEE A512 FOR BACKING PLATE CONSTRUCTION AS REQUIRED FOR WALL-MOUNTED FIXTURES, EQUIPMENT & ACCESSORIES.
3. SEE DETAILS 05 & 09, SHEET A501, FOR TYPICAL DISTANCE BETWEEN COLUMN CENTERLINE AND EXTERIOR FACE OF WALL STUD.
4. SEE L.P. DRAWINGS FOR LABORATORY CASEWORK/ EQUIPMENT TYPES AND LOCATIONS, TYPICAL.
5. SEE MECHANICAL FOR FLOOR DRAIN INFORMATION.
6. SEE A401 FOR TOILET ROOM PLANS, ELEVATIONS, & ACCESSORIES.
7. PARTITION & WALL DIMENSIONS ARE TO FACE OF STUD, WINDOW DIMENSIONS ARE TO FACE OF ROUGH OPENING, UNLESS INDICATED OTHERWISE.
8. DOOR & FRAME LOCATIONS WITH RESPECT TO FLANKING PARTITIONS ARE AS SHOWN ON SHEET A601, UNLESS SPECIFICALLY INDICATED OTHERWISE ON PLAN.

FLOOR PLAN KEY

STATE OF ALASKA
DEPARTMENT OF ENVIRONMENTAL CONSERVATION
SEAFOOD & FOOD SAFETY
LABORATORY
ANCHORAGE, ALASKA

LIVINGSTON STONE
ARCHITECTURE
ENGINEERING
PLANNING
INTERIOR DESIGN
3900 ARCTIC BOULEVARD
SUITE 201
ANCHORAGE, ALASKA 99503-5790
TEL 907 562 2058
FAX 907 561 4528

RECORD DOCUMENTS

THIS RECORD DRAWING HAS BEEN PREPARED FROM CONTRACTOR FURNISHED INFORMATION. LSI, INC. MAKES NO WARRANTY, EXPRESSED OR IMPLIED, WITH REGARDS TO THE ACCURACY OR COMPLETENESS OF THE INFORMATION NOW RECORDED IN THIS DRAWING. LSI, INC. WILL NOT ASSUME ANY LIABILITY THAT MAY OCCUR DUE TO THE RE-USE OF THIS INFORMATION.

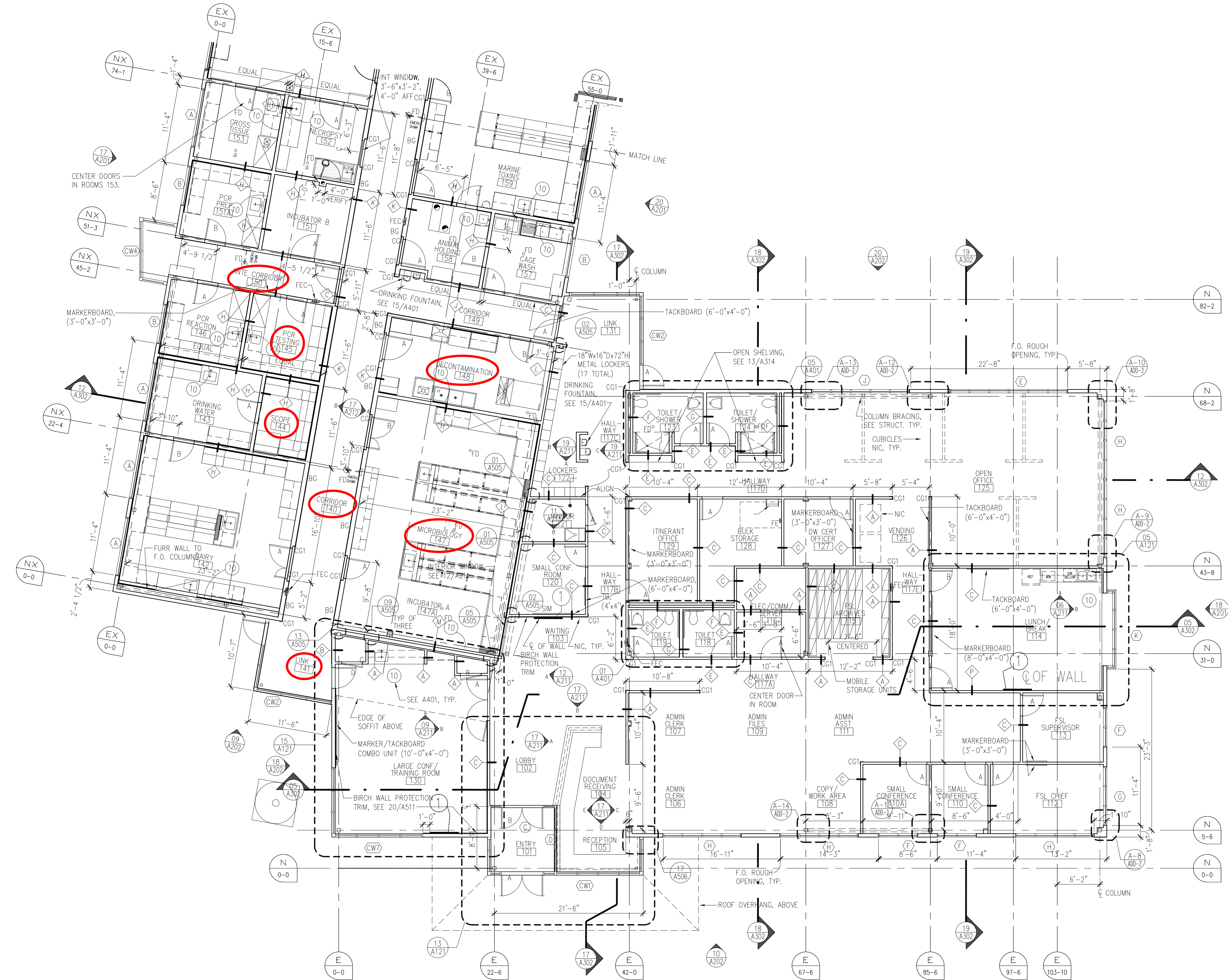
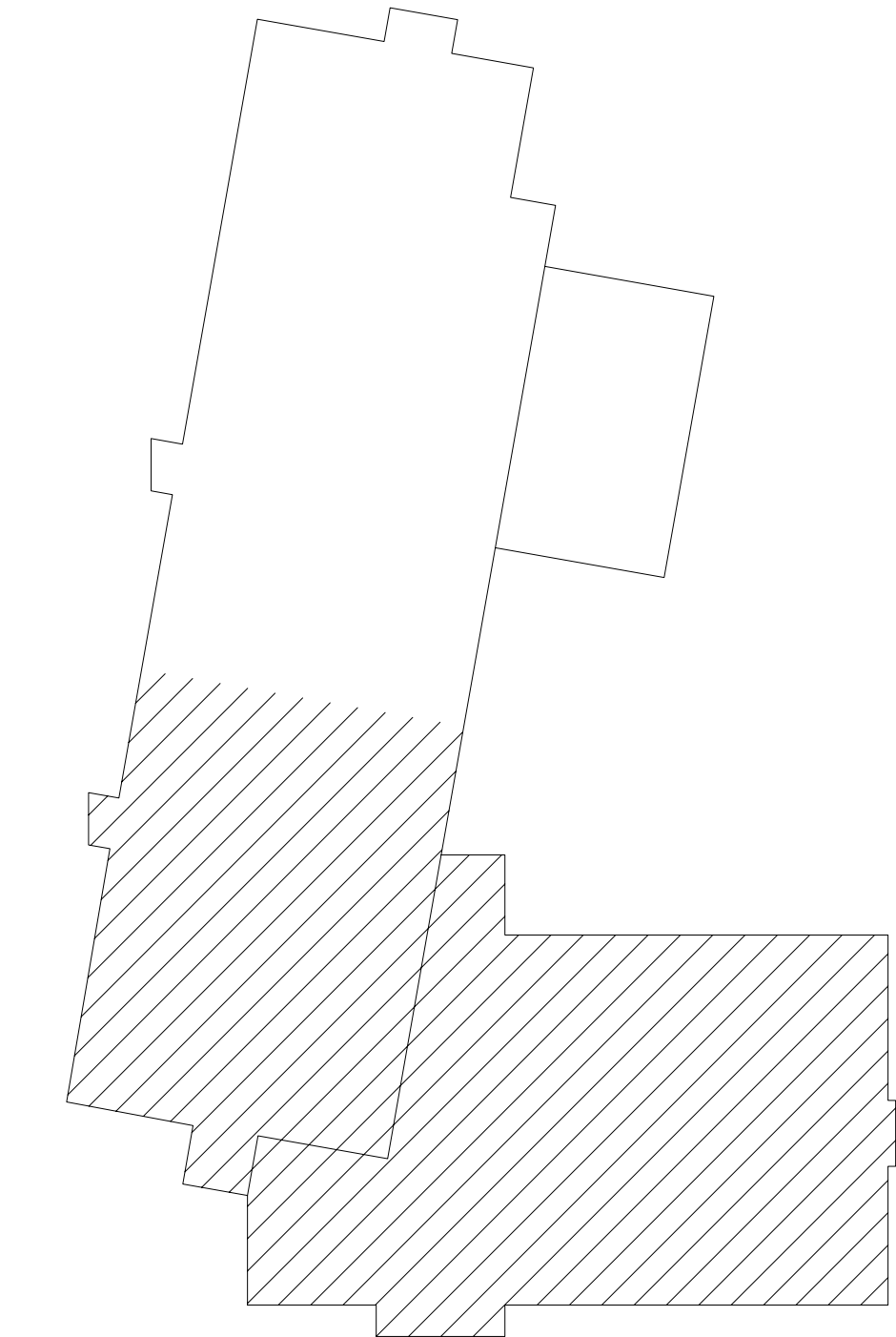
JANUARY 14, 2008

Copyright © 2003 by Livingston Stone, Inc.
all rights reserved. All parts of this drawing and the design it represents are instruments of service, and without the expressed, written permission of Livingston Stone, Inc., remain its exclusive property, and shall not be used, reproduced, or stored in any form. The "Livingston Stone, Inc." name and logo are trademarks of Livingston Stone, Inc.

PROJECT NO. 2011.00
DRAWN BY: LSI
REVIEWED BY: LSI
DATE: 01/14/08

RECORD DOCUMENTS
TITLE
FLOOR PLAN — SOUTH

SHEET NO.
A101



13 FLOOR PLAN — SOUTH
A101 APPROXIMATE SCALE: 1/8" = 1'-0" 2011-AFP1.dwg

