

# FAX TRANSMITTAL

<b>ADDENDUM TO THE CONTRACT DOCUMENTS</b>	<b>Page Number</b> 1	<b>No. of Pages</b> 12
<b>Addendum No. Three (3)</b>	<b>Date Addendum Issued:</b> October 2, 2017	
<b>Issuing Office</b> Alaska State Parks, Design & Construction Section 550 West 7 <sup>th</sup> Ave., Suite 1340, Anchorage, Alaska 99501 Phone: 269-8731 Fax: 269-8917	<b>Previous Addenda Issued</b> One (1) and Two (2)	
<b>Project:</b> Eagle Rock KRSMA Facility Improvements <b>Project No.:</b> 78036-3	<b>Date and Hour of Quotes Due</b> October 11, 2017 at 2:00 prevailing time	

## NOTICE TO BIDDERS

**Bidder must acknowledge receipt of this addendum prior to the hour and date set for the quotes being due by one of the following methods:**

- (a) By acknowledging receipt of this addendum on the quote submitted.
- (b) By telegram or telefacsimile which includes a reference to the project and addendum number.

The bid documents require acknowledgment individually of all addenda to the drawings and/or specifications. This is a mandatory requirement and any quote received without acknowledgment of receipt of addenda may be classified as not being a responsive bid. If, by virtue of this addendum it is desired to modify a quote already submitted, such modification may be made by telegram or telefacsimile provided such a telegram or telefacsimile makes reference to this addendum and is received prior to the opening hour and date specified above.

\*\*\*\*\*

The bid opening date has been changed. Replace all occurrences for the bid opening date in the contract with the date above.

### The Contract Documents are Modified as Follows:

Replace Page 2 of the Bid Schedule with Addendum No. 3 – Attachment A (1 Page)

Replace entirety of Sections 501 and 642, the last page of Section 650, and the first page of Section 660 in the Special Provisions with Addendum No. 3 – Attachment A (6 Pages)

### The Plans are Modified as Follows:

Replace Sheets 5, 12, 16, and 32 with Addendum No. 3 – Attachment C (4 Pages)

**Bidders are required to acknowledge this addendum on the proposal form or by FAX prior to the quotes being due.**

\*\*\*\*\*

Addendum Number Three (3) received.

Name/Title	Date
Firm	

**END OF ADDENDUM**

Pay Item Number	Pay Item Description	Pay Unit	Quantity	Unit Bid Price	Amount Bid
-----------------	----------------------	----------	----------	----------------	------------

\*\*\*\*\* CONTINUE BASIC BID \*\*\*\*\*

505(5-12)	Furnish 12-Inch Structural Steel Pile	L.F.	126	\$	\$
505(6-6)	Drive 6-Inch Structural Steel Pile	Each	16	\$	\$
505(6-8)	Drive 8-Inch Structural Steel Pile	Each	4	\$	\$
505(6-12)	Drive 12-Inch Structural Steel Pile	Each	3	\$	\$
530(1)	Concrete Block Retaining Wall	S.F.	<del>650</del> 780	\$	\$
603(17-12)	12-Inch CSP	L.F.	55	\$	\$
603(20-12)	End Section for 12-Inch CSP	Each	2	\$	\$
604(8)	Curb Drain	Each	1	\$	\$
606(1)	W-Beam Guardrail	L.F.	239	\$	\$
606(13)	Parallel Guardrail Terminal	Each	2	\$	\$
608(1b)	Concrete Sidewalk, 6 Inches Thick	S.Y.	250	\$	\$
608(6)	Curb Ramp	Each	2	\$	\$
609(2)	Curb and Gutter, Type II	L.F.	145	\$	\$
615(1)	Standard Sign	S.F.	103.5	\$	\$
618(2)	Seeding	Pound	18	\$	\$
620(1)	Topsoil, Class B	S.Y.	2030	\$	\$
621(2)	Rose Bush	Each	100	\$	\$
621(7)	Brush Layering	L.F.	150	\$	\$
630(1)	Geotextile, Separation	S.Y.	660	\$	\$
640(1)	Mobilization and Demobilization	L.S.	All Req'd	\$	\$

BID SCHEDULE  
Eagle Rock KRSMA  
Facility Improvements  
Project No. 78036-3

Name of Bidding Firm \_\_\_\_\_

**SECTION 501**  
**STRUCTURAL CONCRETE**

**501-2.01 MATERIALS** Under item 4 Anchors and Inserts add the following:

Rebar                      ASTM A165M, Grade 40

(05/26/17) PARKS-Special Provisions

Add the following subsection:

**501-3.44<sup>19</sup> STUB WALL** Install stub wall using Section 550, Class B concrete and steel reinforcement as shown in the plans.

(05/26/17) PARKS-Special Provisions

**501-4.01 MEATHOD OF MEASUREMENT.** Add the following: Item 501(15B) Stub Wall shall ~~be paid for by the linear foot measured in place along the center of the wall from start to end~~ be measured by the linear foot along the centerline of the wall constructed in place. Measurement of stub wall shall be the same for concrete sidewalk stub walls and concrete ramp stub walls. All labor, equipment, and materials required to install stub wall per the plans and specifications including but not limited to concrete, steel reinforcement, forms, and surface texturing are subsidiary to item 501(15B).

**501-5.01 BASIS OF PAYMENT.** Add the following: Stub wall shall be paid under:

Pay Item	Pay Unit
501(15B) Stub Wall	Linear Foot

(05/26/17) PARKS-Special Provisions

## SECTION 642

### CONSTRUCTION SURVEYING AND MONUMENTS

642 1.01 DESCRIPTION. Add the following: Contractor shall furnish a Record Drawings as a record of the work as constructed and surveyed in place. (10/02/17)PARKS-Special Provision

**642-3.02 CROSS-SECTION SURVEYS** Add the following:

Original ground, selected material cross-sections, and aggregate cross sections shall be taken at identical stations so that no interpolation of data is needed to calculate end areas.

Top of Selected Material, Type A red tops and Aggregate Base Course, Grading D-1 blue tops are required.

Where an exact placement is not shown on the plans, the Department will be responsible for field locating the structures, signs, and mounds. The Contractor shall provide the Engineer with sufficient horizontal and vertical control to enable the Engineer to field locate these facilities. The Contractor shall be responsible for all surveying required to construct the field located item.

(02/29/16)PARKS-Special Provision

Add the following Subsection:

642-3.06 RECORD DRAWINGS. Surveyed Record Drawings of the project shall be submitted for review and approval. Requirements of the Record Drawings include:

- A. Using red felt tip marking pens or colored pencil, clearly describe changes by note and by graphic line, as required. Date all entries. Call attention to entry by a "cloud" around area or areas affected.
- B. When a change is made according to other documents, such as in an RFI, Shop Drawing, or Change Order, reference such document on the same page as the change is found.
- C. All construction surveying shall be performed in accordance with the "Alaska Construction Surveying Requirements" in Appendix B.
- D. Legibly mark each item to record actual construction, including:
  - 1. Measured depths of elements of foundations in relation to final grade. Accurate to the nearest inch.
  - 2. Measured horizontal and vertical locations of underground utilities and apparatuses, referenced to permanent surface improvements. Accurate to the nearest inch.

3. Measured locations of internal utilities and appurtenances concealed in construction, reference to visible and accessible features of construction.
4. Field changes of dimension and detail.
5. Changes made by modifications.
6. Details not on original Contract Drawings.
7. References to related Shop Drawings and modifications.
8. Clearly Label all changes and show dimensions to establish size and location. All identifications shall be sufficiently descriptive to relate reliably to Specifications.

E. Upon submittal of the Record Drawings, make changes in Record Drawings as required by the Project Engineer. Transmit with cover letter in duplicate, listing:

1. Date
2. Department's Project title and number
3. Contractor's name, address, and telephone number
4. Surveyor's name, address, and telephone number
5. Stamped and signed by the Surveyor.
6. Signature of Contractor or authorized representative.

F. Final Record Drawings shall include both hard copies and digitally scanned copies in .pdf format (high quality scans, minimum 300 pixels/inch, red markings must be clear and legible).

(10/02/17)PARKS-Special Provision

**642-4.01 METHOD OF MEASUREMENT.** Add the following: Clearing required for stake visibility shall not be measured. Maintenance of stakes will not be measured.

(01/01/06)PARKS-Special Provision

Add the following: Item 642(13) Record Drawings shall not be measured directly for payment, Engineers acceptance constitutes measurement.

(10/02/17)PARKS-Special Provision

**642-5.01 BASIS OF PAYMENT.** Add the following:

Clearing required for stake visibility is subsidiary to Item 642(1) and no separate payment shall be made.

(01/01/06)PARKS-Special Provision

Add the following: All labor, equipment, and materials including but not limited to field survey, office work, and corrections are subsidiary to Item 642(13) Record Drawings.

<u>Pay Item</u>	<u>Pay Unit</u>
<u>642(13) Record Drawings</u>	<u>Lump Sum</u>

(10/02/17)PARKS-Special Provision

**650-3.13 ORIENTATION KIOSK.** Construct in accordance with Standard Drawing S-10D, Orientation Kiosk.

**650-3.14 INTERPRETIVE SIGN, TYPE D.** Construct in accordance with Standard Drawing S-11D, Interpretive Sign, Type D.

**650-4.01 METHOD OF MEASUREMENT.** Park facilities with the unit measure each will be measured by the actual number of facilities completed and accepted.

Park facilities with the unit measure of lump sum will not be measured directly for payment. Engineer's acceptance of the park facility constructed in place shall constitute measurement.

Excavation and embankment for park facilities outside the limits shown on the plans will be measured for payment only if directed by the Engineer. Excavation and backfill required for items paid for under this Section will not be measured for payment.

Seat rocks at Orientation Kiosk will be subsidiary to that item and will not be measured separately for payment.

**650-5.01 BASIS OF PAYMENT.** The accepted quantity of park facilities will be paid for at the contract unit price per unit of measurement for the type specified completed in place, and listed below excluding all clearing, grubbing, topsoil and crushed aggregate base course, which shall be paid for separately at contract unit prices.

**Gangway lower landing float is subsidiary to Item 650(14B) Dock Float.**

Payment will be made under:

Pay Item	Pay Unit
650(12) ELP Walkway	Lump Sum
650(14A) Ramp Float	Lump Sum
650(14B) Dock Float	Lump Sum
650(14C) Gangway	Lump Sum
650(17) Concrete Parking Bumper	Each
650(21) Barrier Rock	Each
650(36A) Bulletin Board, Type A	Each
650(39B) Orientation Kiosk	Each
650(40D) Interpretive Sign, Type D	Each
650(51A) Kids Don't Float Kiosk, Type A	Each

(05/02/11)PARKS-Special Provision



## SECTION 660

### SIGNALS AND LIGHTING

**660-1.01 DESCRIPTION.** Add the following: This work will consist of installing new electrical and telecommunications to the site including a light pole, RV plug-in station, pay station, web camera pole, bollards, service entrance, and various electrical components. Web camera to be supplied and installed by others.  
(06/09/17) PARKS-Special Provision

**660-2.01 MATERIALS.** Under the first paragraph list add the following:

Cold Galvanizing	Per section 505-2.01
Steel	ASTM Specification A36

(06/09/17) PARKS-Special Provision

Add the following Subsections:

**660-2.02 FEE STATION.** T2 Digital LUKE II to be provided by the Department. Install and provide service to Fee Station per manufacturers' recommendations. Notify the Department a minimum of 5 days prior to construction in order to coordinate delivery of the pay station.

**660-2.03 POWER PEDESTAL.** UL listed power pedestal with heavy resin, two-part polyurethane coated housing, photocell-controlled 14 watt compact fluorescent twist-bulb light with amber lens, 20A/125V GFI receptacle, designed to mount on a pedestal, mechanical lug loop feed bus bars, NEMA 3R rating, and circuit breaker protection for all receptacles, similar or equal to Eaton Newport Camp Mate power pedestal. Provide sufficient power to feed a 50 Amp circuit.

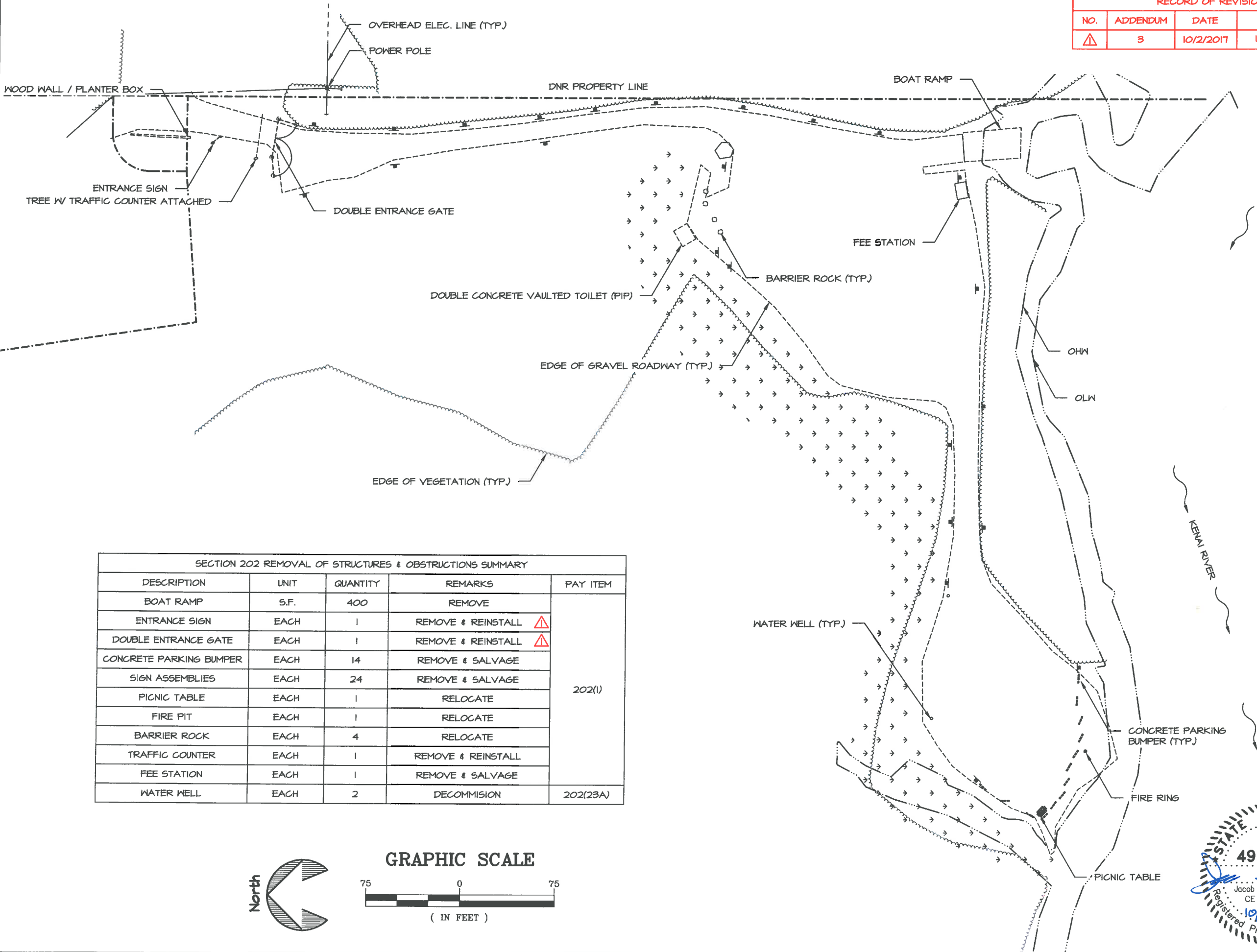
**660-2.04 COMBO LOCKS.** Master Lock Set-Your-Combination Padlock with a 2 inch wide body and 5/16 inch steel shackle. Include change key with locks. Supply padlocks for each padlock ready feature for items in this section.

**660-2.05 PAINT COLOR.** Paint color shall be the following:

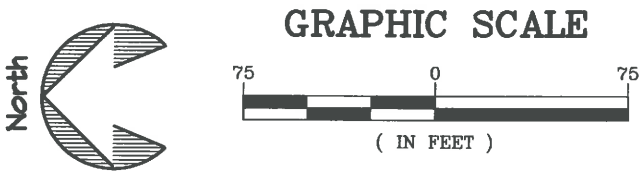
1. Bollards. Color to be safety yellow enamel paint and primer, submit samples to engineer for approval, apply per manufacturers recommendations.
2. Light Pole. Color shall be black, color shall be painted in-shop per manufactures instructions.
3. Web Camera Pole. Pole to be fully hot-dipped galvanized or primed and painted, per section 650-2.11 & 650-3.08 of the specifications, except color shall be gray to



RECORD OF REVISIONS			
NO.	ADDENDUM	DATE	DESCRIPTION
1	3	10/2/2017	UPDATED TABLE



SECTION 202 REMOVAL OF STRUCTURES & OBSTRUCTIONS SUMMARY				
DESCRIPTION	UNIT	QUANTITY	REMARKS	PAY ITEM
BOAT RAMP	S.F.	400	REMOVE	202(1)
ENTRANCE SIGN	EACH	1	REMOVE & REINSTALL	
DOUBLE ENTRANCE GATE	EACH	1	REMOVE & REINSTALL	
CONCRETE PARKING BUMPER	EACH	14	REMOVE & SALVAGE	
SIGN ASSEMBLIES	EACH	24	REMOVE & SALVAGE	
PICNIC TABLE	EACH	1	RELOCATE	
FIRE PIT	EACH	1	RELOCATE	
BARRIER ROCK	EACH	4	RELOCATE	
TRAFFIC COUNTER	EACH	1	REMOVE & REINSTALL	
FEE STATION	EACH	1	REMOVE & SALVAGE	
WATER WELL	EACH	2	DECOMMISSION	202(23A)



STATE OF ALASKA, DEPARTMENT OF NATURAL RESOURCES

PLANS DEVELOPED BY: DIVISION OF PARKS AND OUTDOOR RECREATION

550 W 7TH AVE. SUITE 1340, ANCHORAGE, AK 99501 - 907.269.8731

EAGLE ROCK KRMA

FACILITY IMPROVEMENTS

PROJECT No. 78036-3

EXISTING CONDITIONS &

REMOVAL OF STRUCTURES &

OBSTRUCTIONS SUMMARY

PREPARED: EAT

DRAWN: JSG

REVIEWED: JSG

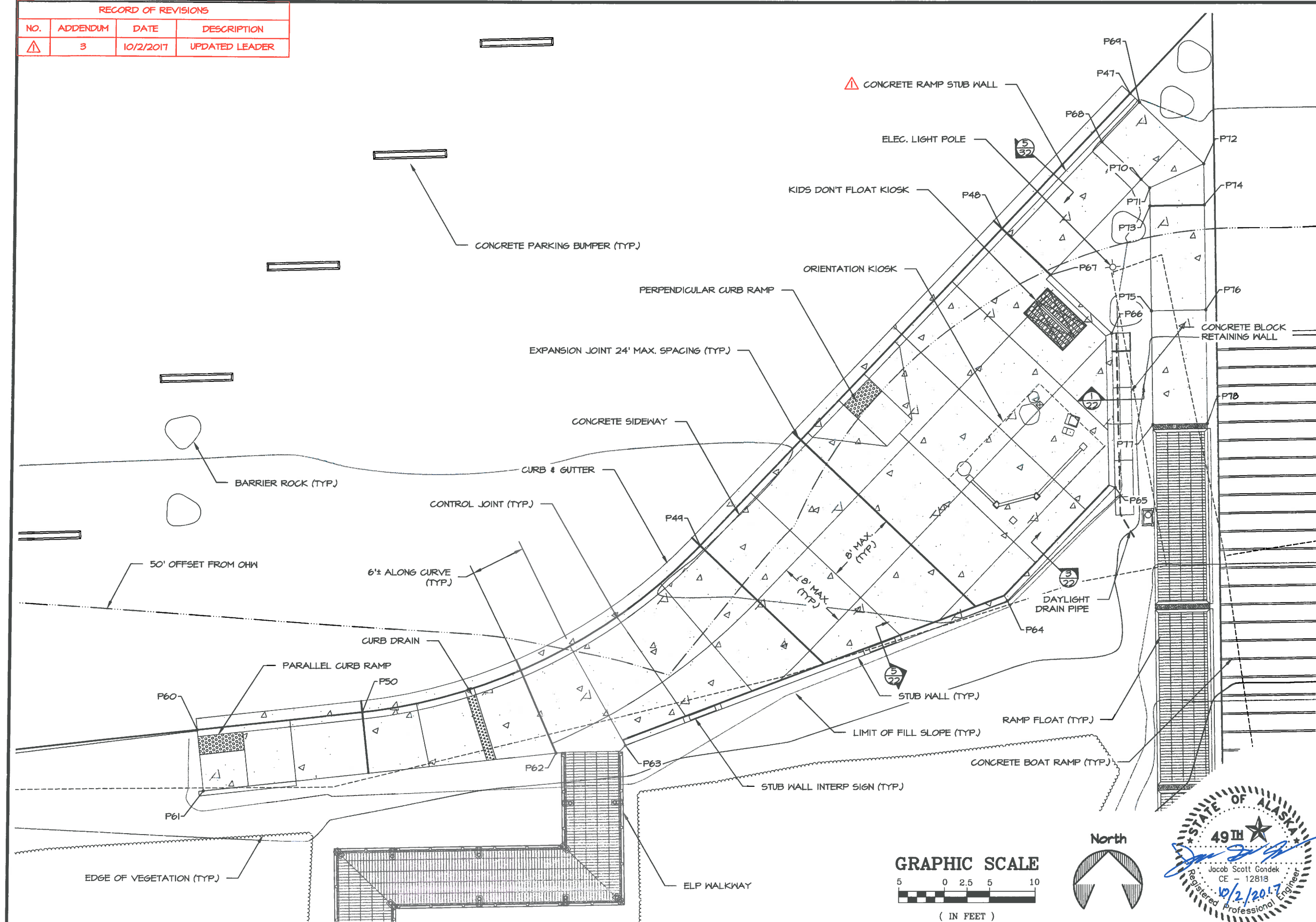
DATE: 09/04/17

SHEET

5

OF 32 SHEETS

RECORD OF REVISIONS			
NO.	ADDENDUM	DATE	DESCRIPTION
△	3	10/2/2017	UPDATED LEADER



STATE OF ALASKA, DEPARTMENT OF NATURAL RESOURCES  
 PLANS DEVELOPED BY: DIVISION OF PARKS AND OUTDOOR RECREATION  
 550 W 7TH AVE. SUITE 1340, ANCHORAGE, AK 99501 - 907.269.8731

EAGLE ROCK KRMA  
 FACILITY IMPROVEMENTS  
 PROJECT NO. 78036-3

CONCRETE SIDEWALK & INTERP  
 AREA GRADING PLAN



PREPARED: EAT  
 DRAWN: EAT  
 REVIEWED: JSS  
 DATE: 09/04/17

SHEET

12

OF 32 SHEETS




RADIUS POINT TABLE				
POINT #	NORTHING	EASTING	RADIUS	DESCRIPTION
R1	2394036.01	1440691.50	25'	EDGE OF GRAVEL SHOULDER
R2	2393832.63	1440472.21	20'	EDGE OF GRAVEL SHOULDER
R3	2393817.00	1440414.01	5'	EDGE OF GRAVEL SHOULDER
R4	2393843.69	1440359.81	25'	EDGE OF GRAVEL SHOULDER
R5	2393776.86	1440270.09	65'	EDGE OF GRAVEL SHOULDER
R6	2393749.18	1440199.26	37'	EDGE OF GRAVEL SHOULDER
R7	2393766.56	1440372.94	25'	EDGE OF GRAVEL SHOULDER
R8	2393853.88	1440589.36	21'	EDGE OF GRAVEL SHOULDER
R9	2393833.85	1440556.77	22'	EDGE OF EARTH MOUND
R10	2393832.93	1440500.30	22'	EDGE OF EARTH MOUND
R11	2393749.18	1440199.26	22'	EDGE OF EARTH MOUND
R12	2393739.14	1440205.83	10'	EDGE OF EARTH MOUND

PARKING BUMPER ALIGNMENT COORDINATE POINT TABLE			
POINT #	NORTHING	EASTING	DESCRIPTION
PA1	2394001.00	1440620.90	EAST PARKING AREA - NW SIDE
PA2	2393896.55	1440499.95	EAST PARKING AREA - NW SIDE
PA3	2393860.65	1440497.32	EAST PARKING AREA - NW SIDE
PA4	2393932.05	1440690.67	EAST PARKING AREA - SE SIDE
PA5	2393816.52	1440556.88	EAST PARKING AREA - SE SIDE
PA6	2393786.27	1440350.16	WEST PARKING AREA - SE SIDE
PA7	2393705.24	1440263.29	WEST PARKING AREA - SE SIDE
PA8	2393817.56	1440273.59	WEST PARKING AREA - NE SIDE
PA9	2393805.98	1440261.19	WEST PARKING AREA - NE SIDE
PA10	2393819.39	1440249.64	WEST PARKING AREA - NE SIDE
PA11	2393796.24	1440224.82	WEST PARKING AREA - NE SIDE
PA12	2393761.68	1440211.62	WEST PARKING AREA - NE SIDE
PA13	2393750.10	1440199.21	WEST PARKING AREA - NE SIDE

CSP SUMMARY								
IN FLOW			OUT FLOW			DIAMETER	LENGTH	END SECTION
NORTHING	EASTING	INVERT ELEVATION	NORTHING	EASTING	INVERT ELEVATION			
2393817.53	1440415.60	18.33	2393824.91	1440360.97	18.07	12"	30'	YES


RECORD OF REVISIONS			
NO.	ADDENDUM	DATE	DESCRIPTION
1	3	10/2/2017	UPDATED ELEVATION

PILE COORDINATE TABLE						
PILE NO.	NORTHING	EASTING	SURFACE ELEVATION	TOP OF PILE CAP ELEVATION	EMBEDMENT DEPTH (MIN.)	PILE DIAMETER & DESCRIPTION
PILE 1	2393806.87	1440677.96	18.80	25.00	25'	8"φ - RAMP FLOAT GUIDE
PILE 2	2393767.38	1440674.73	13.39	25.00	25'	8"φ - RAMP FLOAT GUIDE
PILE 3	2393727.89	1440671.50	8.48	25.00	25'	8"φ - RAMP FLOAT GUIDE
PILE 4	2393719.61	1440660.96	8.00	25.00	25'	12"φ - DOCK FLOAT GUIDE
PILE 5	2393722.35	1440627.51	8.00	25.00	25'	12"φ - DOCK FLOAT GUIDE
PILE 6	2393725.08	1440594.06	8.00	25.00	25'	12"φ - DOCK FLOAT GUIDE
PILE 7	2393760.95	1440584.62	18.42	21.54	18'	6"φ - LIFTING FRAME
PILE 8	2393754.97	1440584.13	17.67	21.54	18'	6"φ - LIFTING FRAME
PILE 9	2393760.48	1440590.26	18.43	21.54	18'	6"φ - LIFTING FRAME
PILE 10	2393754.50	1440589.77	17.81	21.54	18'	6"φ - LIFTING FRAME
PILE 11	2393768.69	1440590.52	18.82	21.54	15'	6"φ - ELP WALKWAY
PILE 12	2393769.08	1440585.69	18.87	21.54	15'	6"φ - ELP WALKWAY
PILE 13	2393772.73	1440591.19	19.02	21.54	15'	6"φ - ELP WALKWAY
PILE 14	2393778.55	1440586.26	19.35	21.54	15'	6"φ - ELP WALKWAY
PILE 15	2393777.85	1440591.83	19.26	21.54	15'	6"φ - ELP WALKWAY
PILE 16	2393777.08	1440601.32	19.14	21.38	15'	6"φ - ELP WALKWAY
PILE 17	2393772.25	1440600.92	18.91	21.38	15'	6"φ - ELP WALKWAY
PILE 18	2393771.48	1440610.39	18.79	21.21	15'	6"φ - ELP WALKWAY
PILE 19	2393770.95	1440615.90	18.76	21.21	15'	6"φ - ELP WALKWAY
PILE 20	2393776.76	1440610.96	19.05	21.21	15'	6"φ - ELP WALKWAY
PILE 21	2393781.73	1440611.81	19.41	21.21	15'	6"φ - ELP WALKWAY
PILE 22	2393781.34	1440616.64	19.25	21.21	15'	6"φ - ELP WALKWAY
PILE 23	2393834.41	1440676.66	22.46	22.71' 	15'	8"φ - ELEC. LIGHT POLE

STATE OF ALASKA, DEPARTMENT OF NATURAL RESOURCES  
PLANS DEVELOPED BY: DIVISION OF PARKS AND OUTDOOR RECREATION  
550 W 7TH AVE. SUITE 1340, ANCHORAGE, AK 99501 - 907.269.8731

EAGLE ROCK KRMA  
FACILITY IMPROVEMENTS  
PROJECT No. 78036-3

COORDINATE POINT, RADIUS  
POINT, PILE COORDINATE &  
CSP SUMMARY TABLES



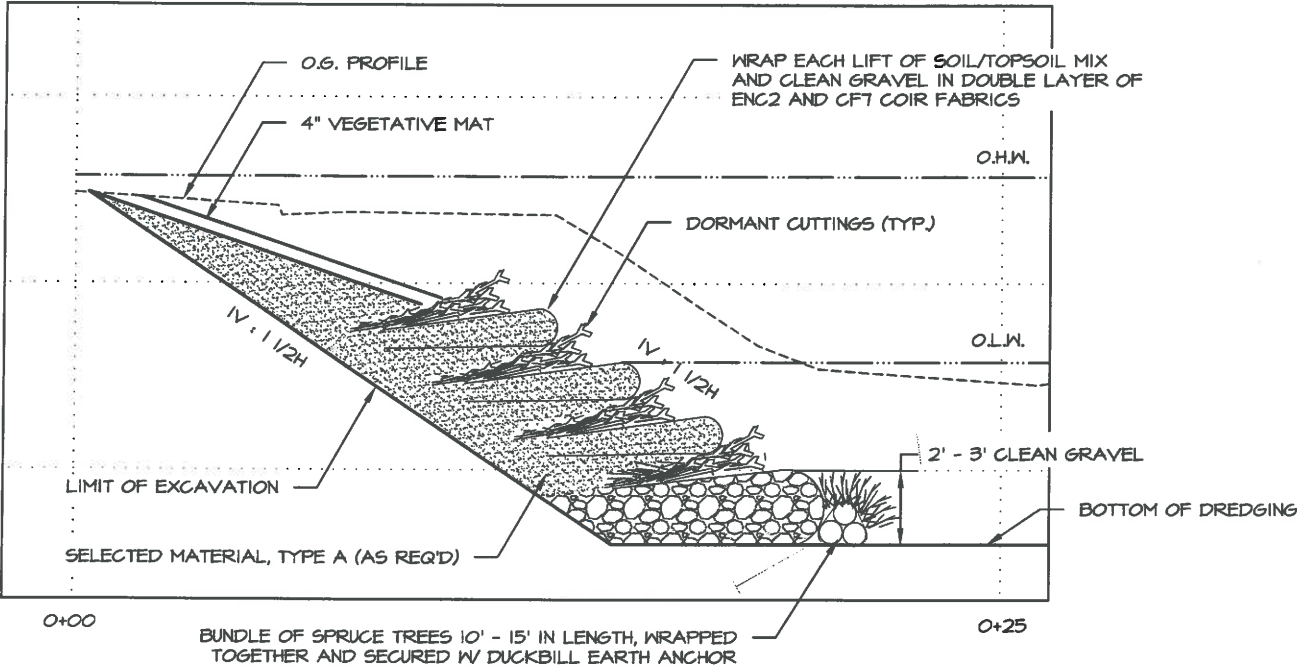
PREPARED: EAT  
DRAWN: EAT  
REVIEWED: JSG  
DATE: 09/04/17

SHEET  
16  
OF 92 SHEETS

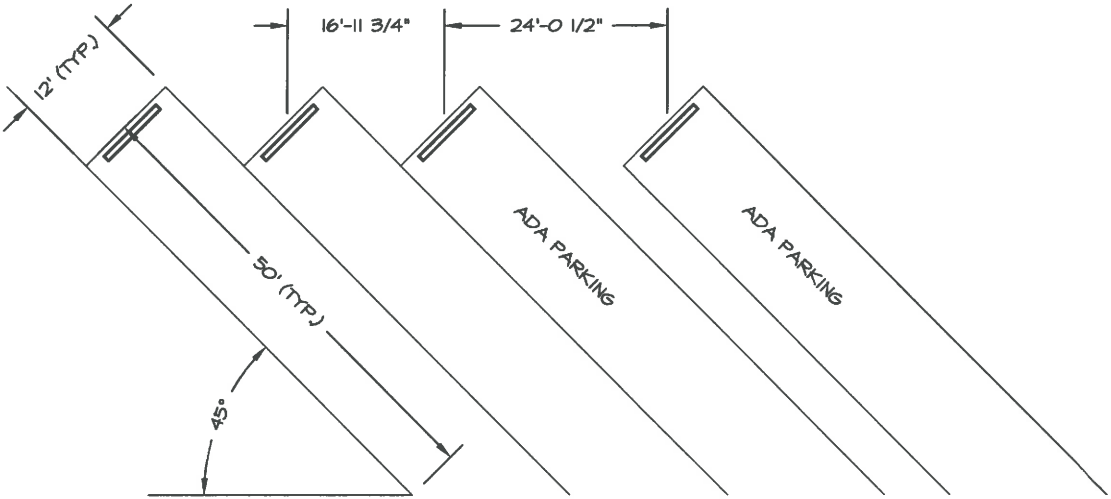




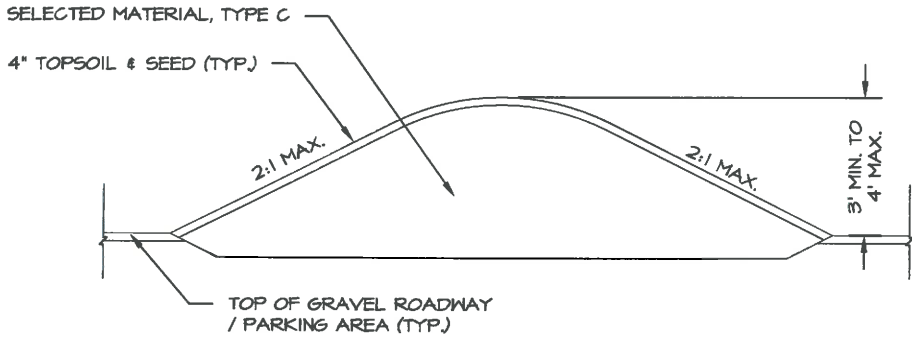
RECORD OF REVISIONS			
NO.	ADDENDUM	DATE	DESCRIPTION
1	3	10/2/2017	RENAME DETAIL



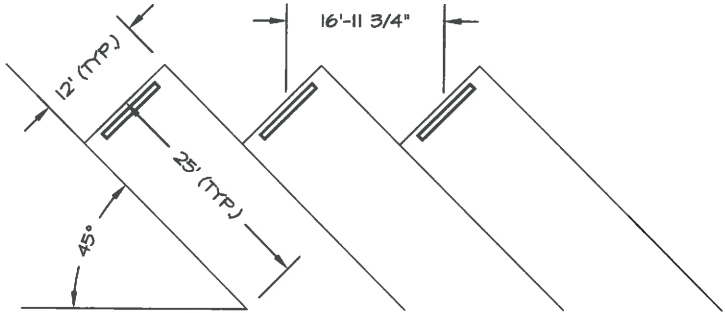
1  
32  
BRUSH LAYERING  
TYPICAL SECTION



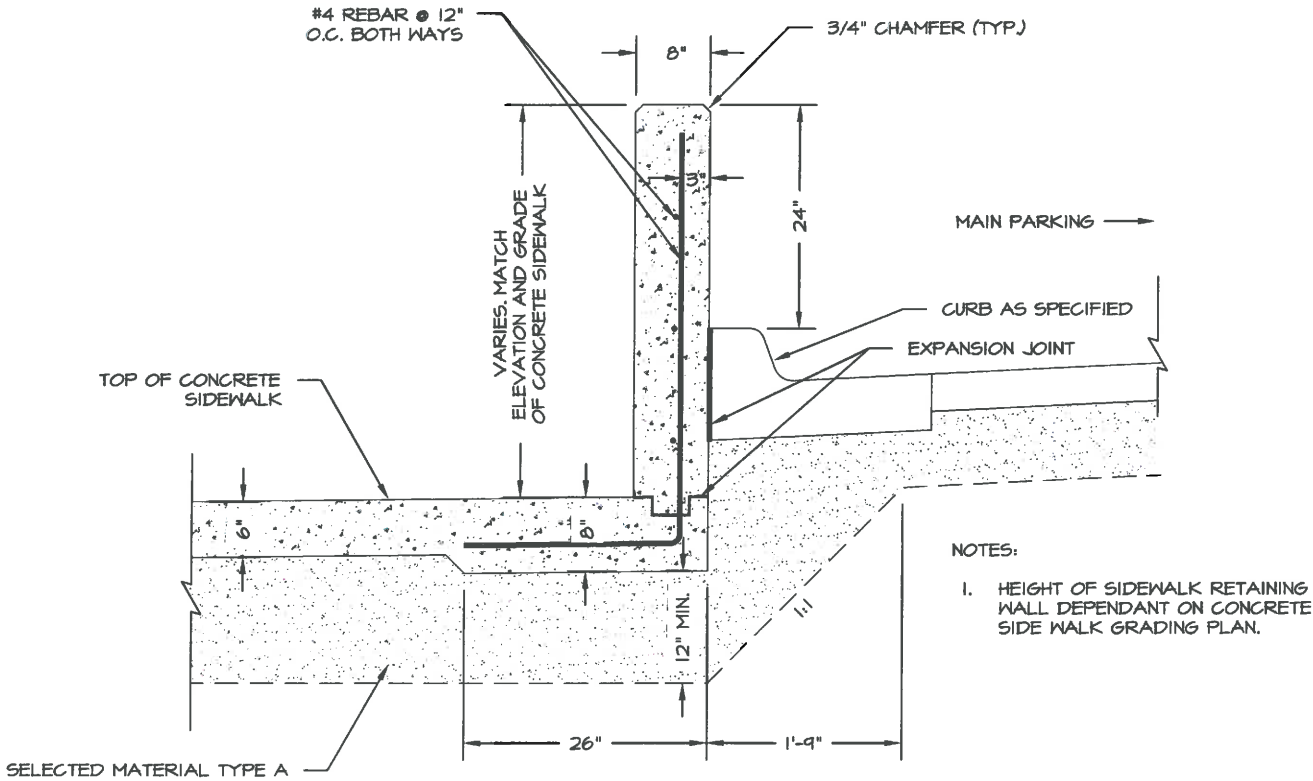
2  
32  
ANGLED VEHICLE & TRAILER PARKING  
DETAIL



3  
32  
EARTH MOUND  
TYPICAL SECTION



4  
32  
ANGLED VEHICLE PARKING  
DETAIL



5  
32  
CONCRETE RAMP STUB WALL  
DETAIL

STATE OF ALASKA, DEPARTMENT OF NATURAL RESOURCES  
PLANS DEVELOPED BY: DIVISION OF PARKS AND OUTDOOR RECREATION  
550 W 7TH AVE. SUITE 1340, ANCHORAGE, AK 99501 - 907.269.8731

EAGLE ROCK KRMA  
FACILITY IMPROVEMENTS  
PROJECT No. 78036-3

MISCELLANEOUS DETAILS



PREPARED: EAT  
DRAWN: EAT  
REVIEWED: JSG  
DATE: 09/04/17

SHEET

32

OF 32 SHEETS

