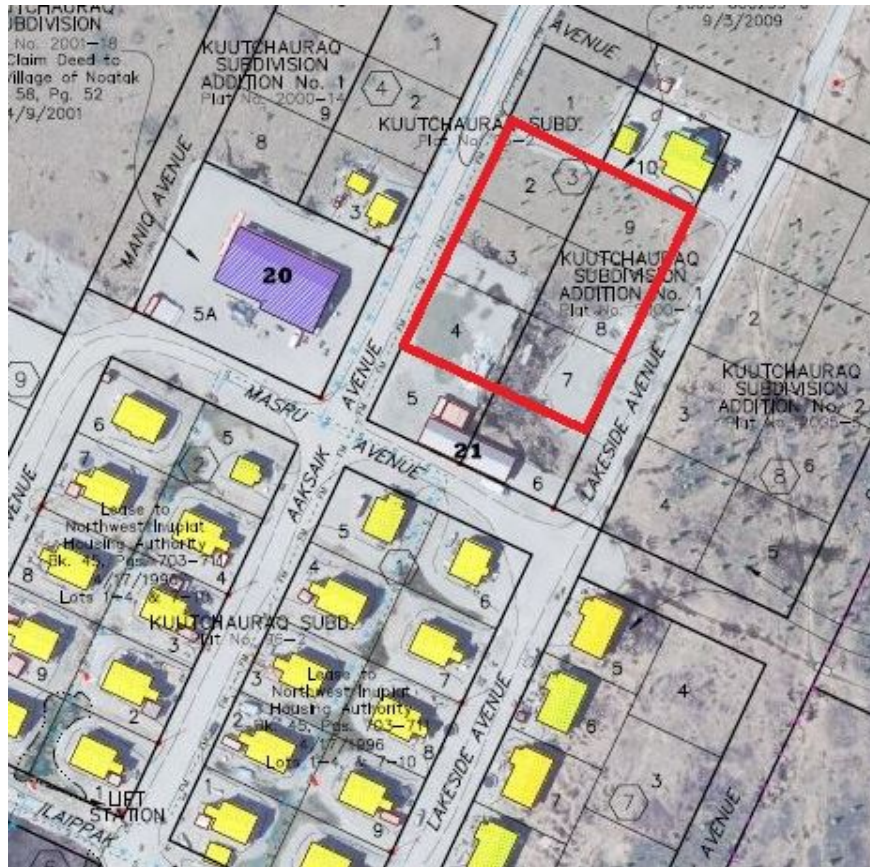
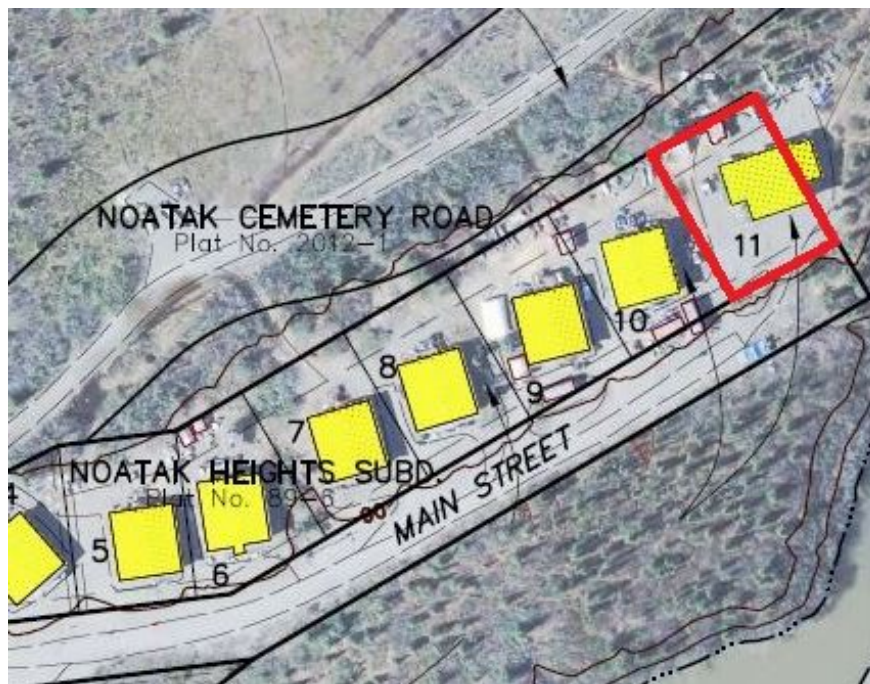


## Appendix A – Lots to be transferred to the Native Village of Noatak



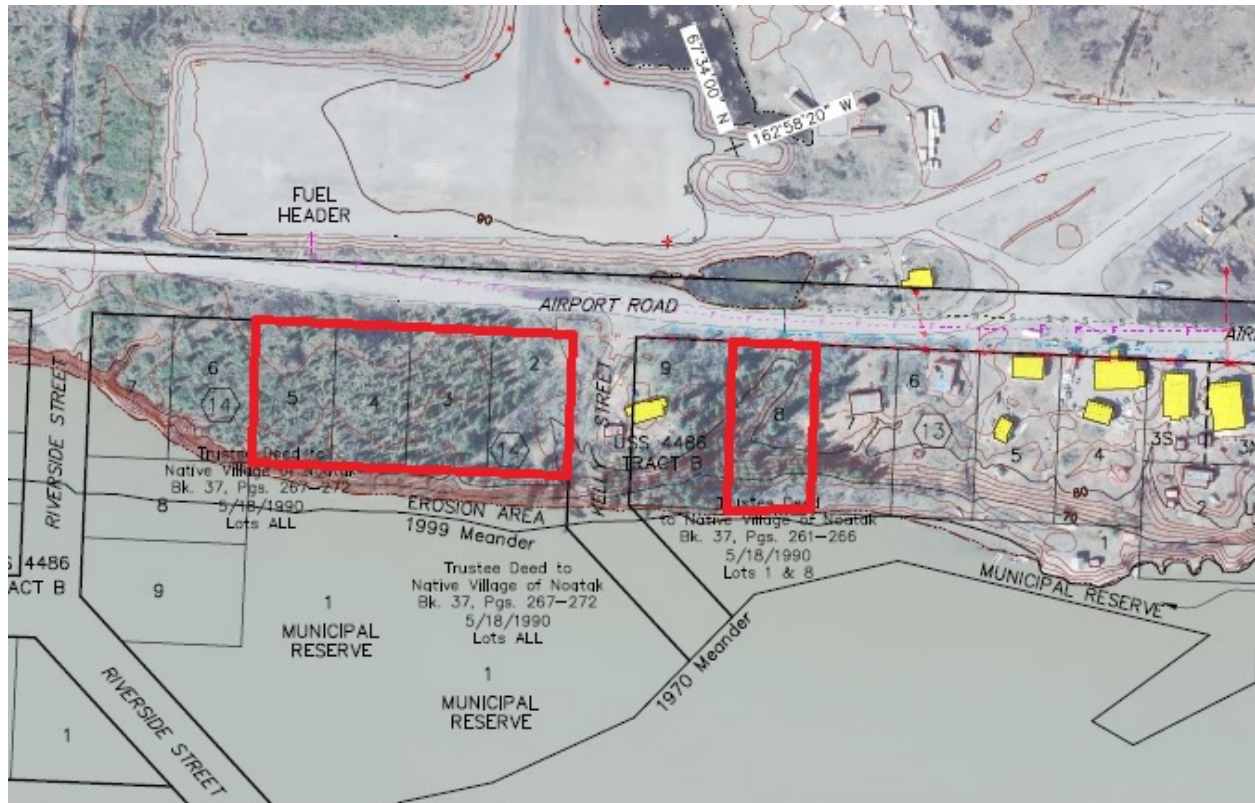
Lots 2-4, Block 3 of the Kuutchauroq Subdivision 1995 Phase recorded as Plat 96-2 on February 23, 1996 in the Kotzebue Recording District

Lots 7-9, Block 3 of the Kuutchauroq Subdivision Addition No. 1 recorded as Plat 2000-14 on December 12, 2000 in the Kotzebue Recording District



Lot 11 of the Noatak Heights Subdivision, recorded as Plat 89-6 on April 29, 1989 in the Kotzebue Recording District.

## Appendix B – Lots to be transferred to NANA Regional Corporation, Inc.



Lots 2-5, Block 14, Tract B, of the Noatak Townsite, recorded as US Survey No. 4486 on May 29, 1975 and located within the Kotzebue Recording District.

Lot 8, Block 13, Tract B, of the Noatak Townsite, recorded as US Survey No. 4486 on May 29, 1975 and located within the Kotzebue Recording District.