



INVITATION TO BID ADDENDUM TO THE CONTRACT

Project Name: JSOB 7th and 8th Floor Renovation
Project Number: 2018-0222-3725

ADDENDUM #:	One
CURRENT BID OPENING DATE:	August 25, 2017 2:00 pm Local Time

PREVIOUS ADDENDA:	None
PREVIOUS BID OPENING	August 25, 2017 2:00 pm Local Time

ISSUED BY:	Statewide Facilities Physical Address: Department of Administration Shared Services of Alaska 333 Willoughby Ave 7th Floor Juneau, Alaska 99811-0210	Mailing Address: Department of Administration Shared Services of Alaska PO Box 110210 Juneau, Alaska 99811-0210
-------------------	---	--

DATE ADDENDUM ISSUED: August 18, 2017

The following items of the Contract are modified as herein indicated. All other items remain the same.

PROJECT CLARIFICATIONS AND QUESTIONS

Item No. 1: The State has applied and paid for the CBJ Building permit. Contractor shall not include price of the permit in their bid.

PROJECT DRAWINGS

Item No. 1: Replace Drawings A1.0-7, A1.1-8, A2.0-7, A2.1-8, and ASB1.1-7 with the attached Drawings.

END OF ADDENDUM No. One

By: Brent Fagerstrom, Facilities Contracting Officer

Total number of pages contained within this Addendum: 6

DEMOLITION PLAN KEY NOTES

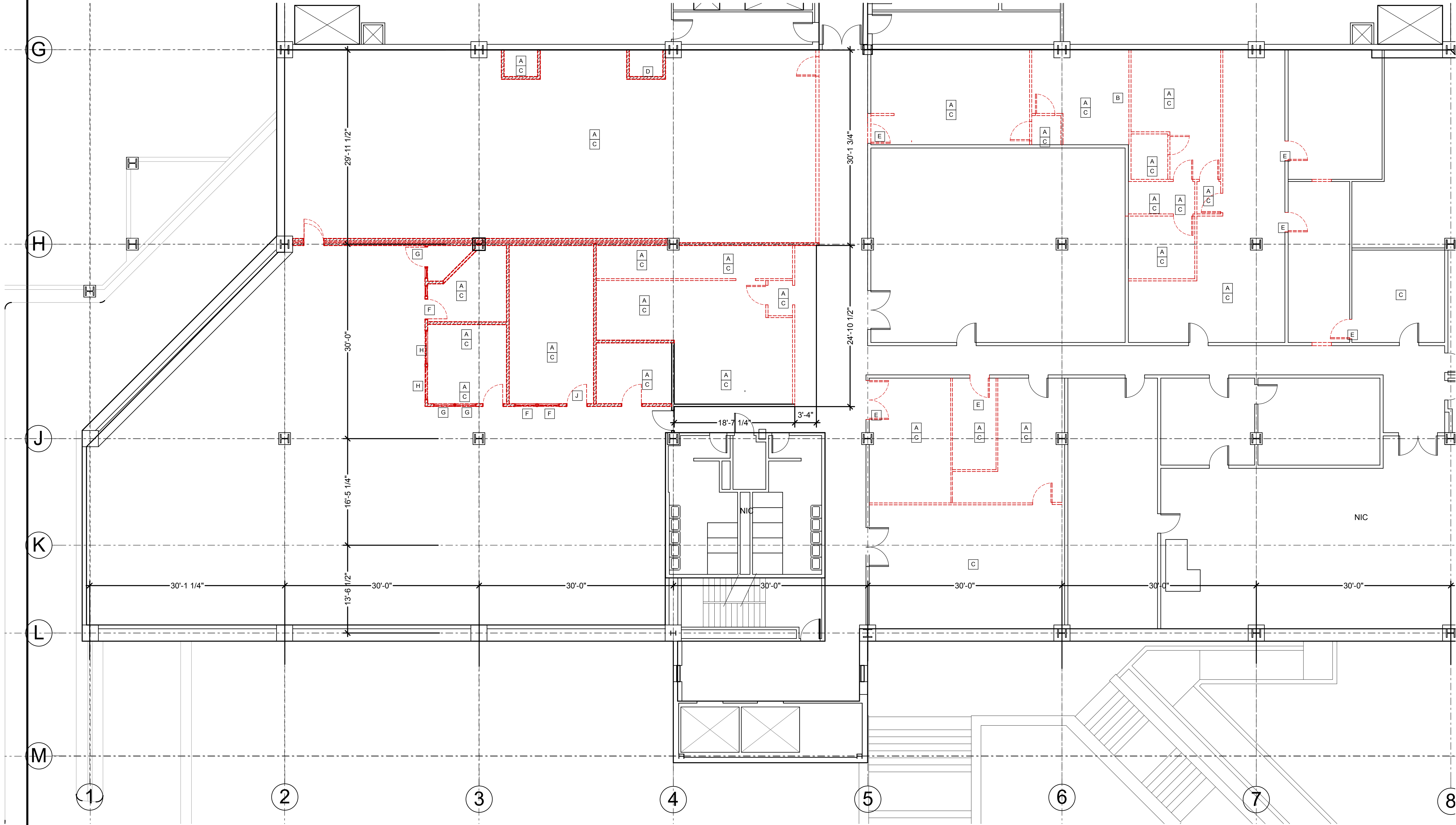
- [A] REMOVE ENTIRE WALL ASSEMBLY, INCLUDING FLOOR AND CEILING TRACK, DOORS AND WINDOWS. REMOVE ALL IN-WALL AND WALL MOUNTED PLUMBING AND ELECTRICAL. PRESERVE CEILING ASSEMBLY INTACT. AT WALLS TO REMIAN, REMOVE ALL UNUSED MISCELLANEOUS HARDWARE AND DEVICES.
- [B] REMOVE CASEWORK
- [C] AT ALL AREAS, REMOVAL OF RUBBER BASE IS A PART OF THIS CONTRACT AND TO BE COORDINATED WITH HAZARDOUS MATERIALS ABATEMENT. AT CARPET AREAS, REMOVAL OF ALL FLOOR FINISHES AND ASSOCIATED GLUES BY OTHERS. COORDINATE ACCESS AND REMOVAL OF FLOOR MOUNTED FIXTURES FOR THIS WORK BY OTHERS. AT AREAS OF VINYL COMPOSITION TILE, REMOVAL OF ALL ACM IS WITHIN THIS CONTRACT.
- [D] REMOVE DUMBWAITER ASSEMBLY, ASSOCIATED WALLS AND EQUIPMENT
- [E] REMOVE DOOR AND FRAME
- [F] SALVAGE DOOR & FRAME OR RELIGHT, INSTALL AT ROOM 708
- [G] SALVAGE DOOR & FRAME OR RELIGHT, INSTALL AT ROOM 707
- [H] SALVAGE HIGH TYPE 2 RELIGHT, INSTALL AT ROOM 704
- [J] SALVAGE DOOR AND FRAME, INSTALL AT ROOM 702

DEMOLITION PLAN GENERAL NOTES

- ALL EXISTING CONSTRUCTION TO BE FIELD VERIFIED PRIOR TO COMMENCEMENT OF THE WORK. VERIFY ALL EXISTING DIMENSIONS AND LAYOUT OF NEW WALLS. ADJUST NEW WALL LAYOUT SO AS TO MINIMALLY IMPACT CEILING GRID AND LIGHTING LAYOUT.
- SEE MECHANICAL AND ELECTRICAL DRAWINGS FOR EXTENTS OF MECHANICAL AND ELECTRICAL DEMOLITION.
- COORDINATE ALL DEMOLITION AND REMOVAL WITH HAZARDOUS MATERIALS DOCUMENTATION.
- EXISTING WALLS TERMINATE AT UNDERSIDE OF CEILING GRID, TYPICAL. AN EXCEPTION IS AT THE DUMBWAITER PENETRATION THROUGH FLOOR 7 CEILING.
- EXISTING BLINDS ON EXTERIOR WINDOWS TO REMAIN. COORDINATE WITH OWNERS EFFORTS TO PRESERVE THROUGH CONSTRUCTION.

DEMOLITION PLAN LEGEND

- ===== WALL TO REMAIN
- ===== WALL TO BE REMOVED
- WALLS/ITEMS TO BE REMOVED



7TH FLOOR DEMOLITION PLAN

SCALE: 1/8" = 1'-0"

BID DOCUMENTS

August 9, 2017

ADDENDUM NUMBER

No. 1 - August 17, 2017

ATTACHMENT NUMBER

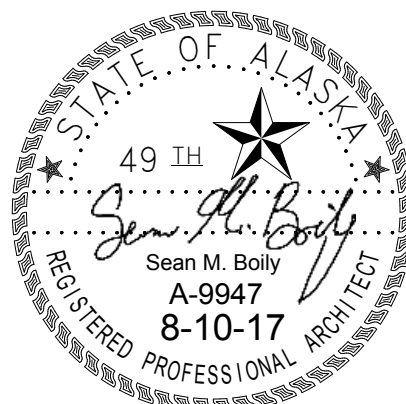
RECORD OF REVISIONS

No.	DATE	DESCRIPTION

STATE OF ALASKA
SHARED SERVICES OF ALASKA

Facilities Section
PO Box 11210
Juneau, AK 99811-0210

ALASKA STATE OFFICE BUILDING
7TH & 8TH FLOOR RENOVATIONS



NorthWind Architects, LLC
www.NorthWindArch.com
126 Seward Street
Juneau, AK, 99801

IF THE ABOVE DIMENSION DOES NOT MEASURE ONE INCH (1") EXACTLY, THIS DRAWING WILL HAVE BEEN ENLARGED OR REDUCED, AFFECTING ALL LABELED SCALES.

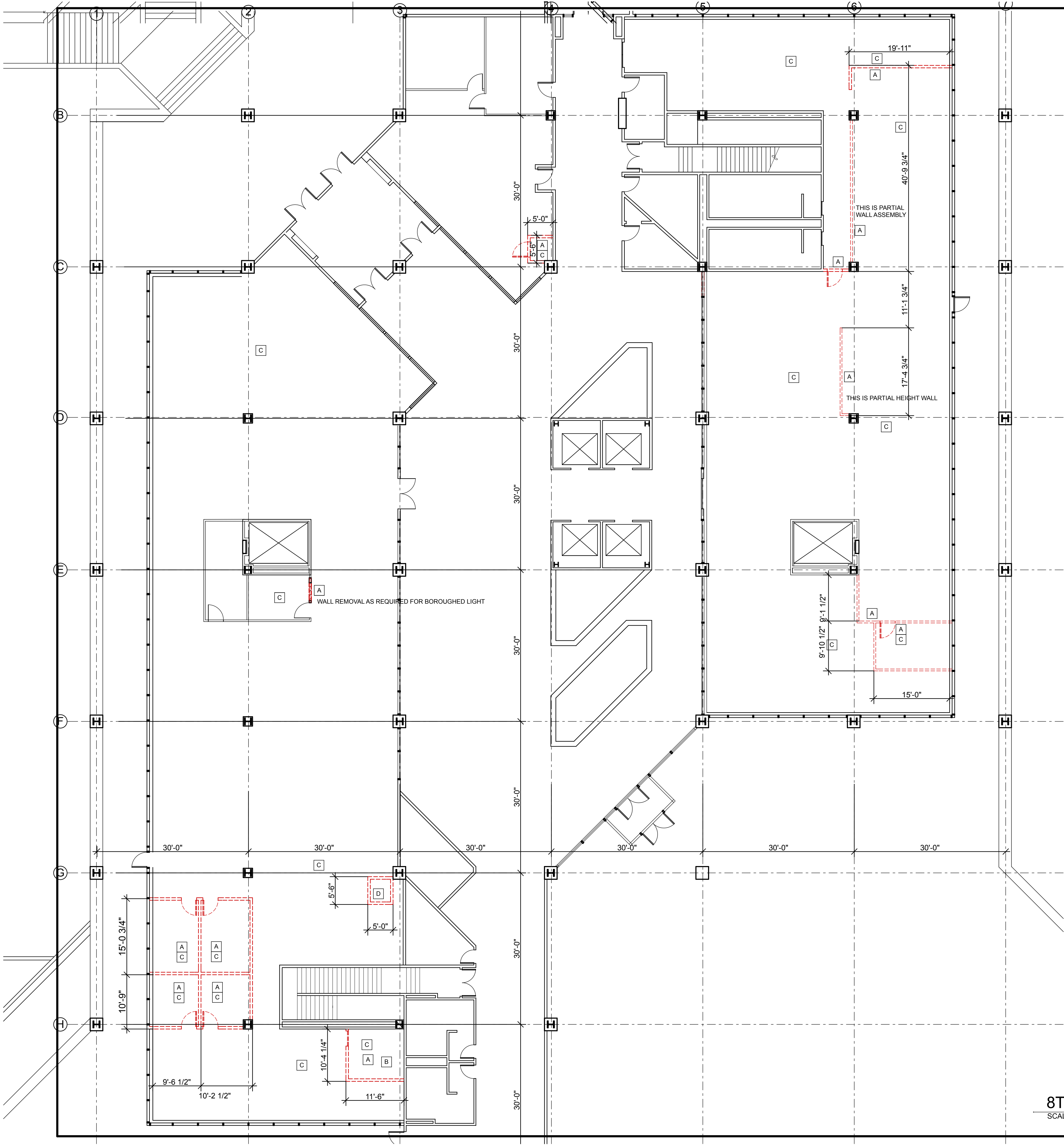
DRAWN BY: SB

A1.0-7
7TH FLOOR
DEMOLITION PLAN

PROJECT DESIGNATION NUMBER

2018-0222-3725

STATE	YEAR
ALASKA	2017



DEMOLITION PLAN GENERAL NOTES

- ALL EXISTING CONSTRUCTION TO BE FIELD VERIFIED PRIOR TO COMMENCEMENT OF THE WORK. VERIFY ALL EXISTING DIMENSIONS AND LAYOUT OF NEW WALLS. ADJUST NEW WALL LAYOUT SO AS TO MINIMALLY IMPACT CEILING GRID AND LIGHTING LAYOUT.
- SEE MECHANICAL AND ELECTRICAL DRAWINGS FOR EXTENTS OF MECHANICAL AND ELECTRICAL DEMOLITION.
- COORDINATE ALL DEMOLITION AND REMOVAL WITH HAZARDOUS MATERIALS DOCUMENTATION.
- EXISTING WALLS TERMINATE AT UNDERSIDE OF CEILING GRID, TYPICAL. AN EXCEPTION IS AT THE DUMBWAITER PENETRATION THROUGH FLOOR 7 CEILING.
- EXISTING BLINDS ON EXTERIOR WINDOWS TO REMAIN. COORDINATE WITH OWNERS EFFORTS TO PRESERVE THROUGH CONSTRUCTION.

DEMOLITION PLAN LEGEND

- WALL TO REMAIN
- WALL TO BE REMOVED
- WALLS/ITEMS TO BE REMOVED

DEMOLITION PLAN KEY NOTES

- REMOVE ENTIRE WALL ASSEMBLY TO UNDERSIDE OF CEILING GRID, INCLUDING FLOOR AND CEILING TRACK, DOORS AND WINDOWS. REMOVE ALL IN-WALL AND WALL MOUNTED PLUMBING AND ELECTRICAL. PRESERVE CEILING ASSEMBLY INTACT. AT WALLS TO REMAIN, REMOVE ALL UNUSED MISCELLANEOUS HARDWARE AND DEVICES.
- REMOVE CASEWORK
- AT ALL AREA, REMOVAL OF RUBBER BASE IS A PART OF THIS CONTRACT AND TO BE COORDINATED WITH HAZARDOUS MATERIALS ABATEMENT AS REQUIRED. AT CARPET AREAS, REMOVAL OF ALL FLOOR FINISHES AND ASSOCIATED GLUES BY OTHERS. COORDINATE ACCESS AND REMOVAL OF FLOOR MOUNTED FIXTURES FOR THIS WORK BY OTHERS. AT AREAS OF VINYL COMPOSITION TILE, REMOVAL OF ALL ACM IN AREAS OF THE WORK IS WITHIN THIS CONTRACT.
- REMOVE DUMBWAITER ASSEMBLY, ASSOCIATED WALLS AND EQUIPMENT
- REMOVE DOOR AND FRAME

8TH FLOOR DEMOLITION PLAN

SCALE: 3/32" = 1'-0" 0 8' 16' 24'

BID
DOCUMENTS

August 9, 2017

ADDENDUM NUMBER

No. 1 - August 17, 2017

ATTACHMENT NUMBER

RECORD OF REVISIONS

No.	DATE	DESCRIPTION

STATE OF ALASKA
SHARED SERVICES OF ALASKA

Facilities Section
PO Box 11210
Juneau, AK 99811-0210

ALASKA STATE OFFICE BUILDING
7TH AND 8TH FLOOR RENOVATIONS



NorthWind Architects, LLC
www.NorthWindArch.com
126 Seward Street
Juneau, AK, 99801

IF THE ABOVE DIMENSION DOES NOT MEASURE ONE INCH (1") EXACTLY, THIS DRAWING WILL HAVE BEEN ENLARGED OR REDUCED, AFFECTING ALL LABELED SCALES.

DRAWN BY: SB

A1.1-8
8TH FLOOR
DEMOLITION PLAN

PROJECT DESIGNATION NUMBER

2018-0222- 3725

STATE
ALASKA

YEAR
2017

FLOOR PLAN KEY NOTES

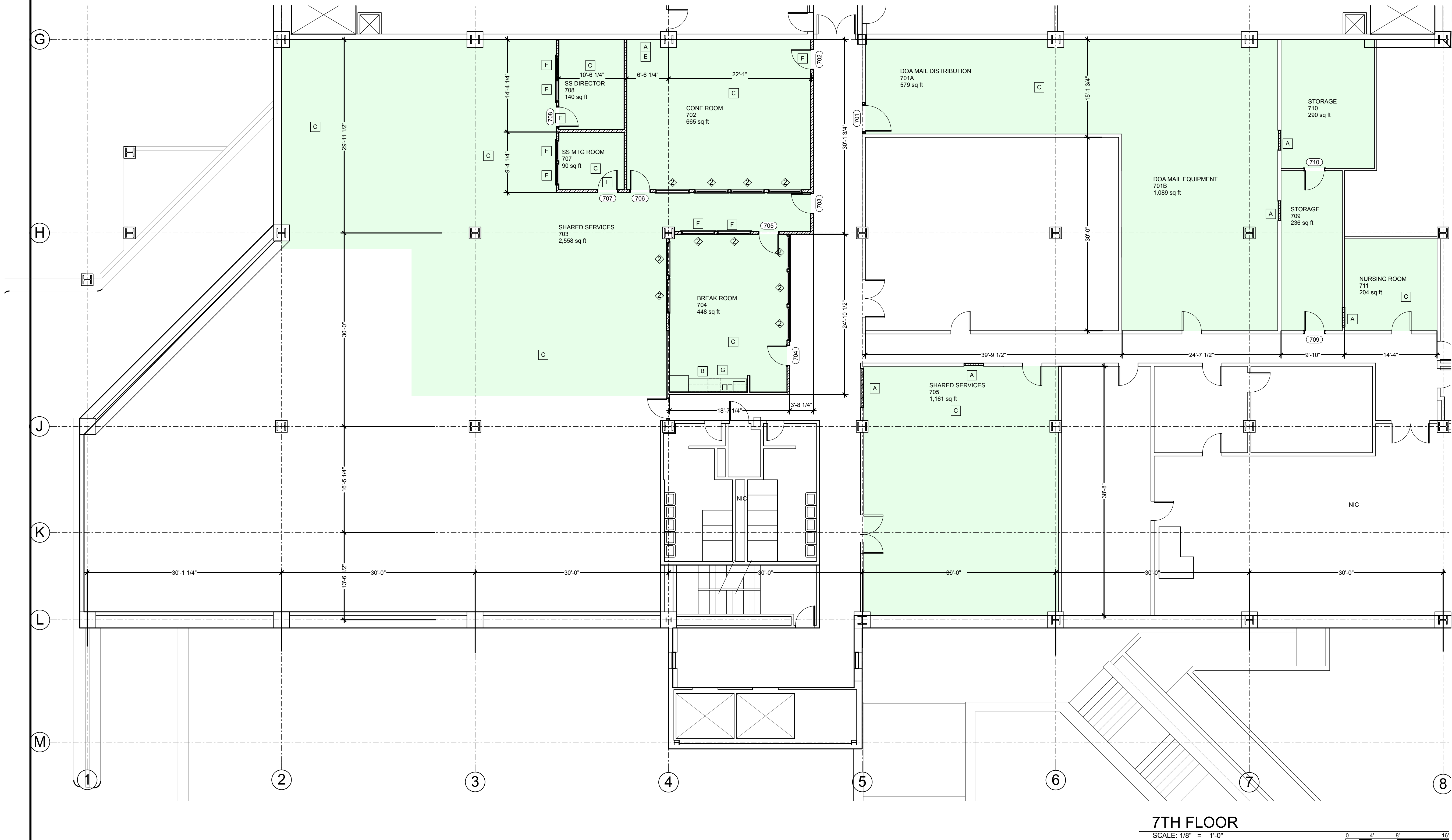
- [A] FRAME AND PATCH WALL TO MATCH SURROUNDING ASSEMBLIES
- [B] INSTALL NEW SINK, CASEWORK AND APPLIANCES; TYPICAL CAFE CONFIGURATION - COORDINATE WITH 1/A0.2.
- [C] COORDINATE WITH FLOORING AND FURNATURE INSTALLATION BY OTHERS.
- [D] INSTALL 1/4" THICK CONTINUOUS STEEL PLATE AT OPENING WHERE DUMBWAITER HAS BEEN REMOVED. FINISH WITH TOP 5/8" BELOW SURROUNDING CONCRETE. SUPPORT WITH 2X2 STEEL ANGLE PERIMETER, AND 2X2 STEEL ANGLE STIFFENERS AT NO MORE THAN 24" O.C. ALL WELDED CONSTRUCTION. LEVEL TO SURROUNDING FLOOR WITH CEMENTIOUS FLOOR LEVELING COMPOUND.
- [E] WHERE DUMBWAITER IS REMOVED, EXTEND EXISTING CEILING GRID AND ACOUSTIC CEILING TILE IN KIND TO FILL VOID IN CEILING SYSTEM LEFT BY REMOVAL.
- [F] INSTALL SLAVAGED RELIGHT OR DOOR - SEE DEMOLITION PLANS FOR SOURCE COORDINATION

FLOOR PLAN GENERAL NOTES

- ALL NEW WALLS TO BE FRAMED WITH 3-5/8" METAL STUDS, WITH 2" WIDE FACE FLANGES, MINERAL WOOL STUD CAVITY ACOUSTIC INSULATION FILL, RESILIENT CHANNEL ON ONE SIDE, AND 5/8" TYPE X GYPSUM WALLBOARD, BOTH SIDES, PAINTED. ACOUSTIC SEAL ALL PERIMETERS AND PENETRATIONS. COORDINATE WALL PLACEMENT TO AVOID LIGHT FIXTURES IN CEILING GRID.
- ALL EXISTING WALLS AND SOFFITS TO REMAIN TO BE PATCHED AND PAINTED AS A PART OF THE WORK.
- WHERE WALLS & DEVICES ARE REMOVED IN DEMO, EXTEND ADJACENT FINISHES ACROSS BREACH IN ASSEMBLY.
- CAREFULLY COORDINATE SCOPE OF FLOOR REPAIR AND PREPARATION, FLOORING INSTALLATION AND BASE INSTALLATION. WORK BY OTHERS WITH ALL WORK IN THIS CONTRACT.
- COORDINATE NEW CONSTRUCTION WITH ABATEMENT, MECHANICAL AND ELECTRICAL DOCUMENTS.
- ALL TAGGED DOORS ARE NEW DOORS; 3-0 X 7-0 SOLID CORE WOOD DOORS WITH DOUBLE RABBIT HOLLOW METAL FRAME, UNLESS OTHERWISE NOTED. BRUSHED NICKEL BUTTS, DOOR STOPS AND CYLINDRICAL LOCKSETS WITH ADA LEVERS, TYPICAL. COORDINATE WITH SCHEDULE ON A0.2, AND WITH SPECIFICATION NOTES.
- EXISTING WALLS TERMINATE AT UNDERSIDE OF CEILING GRID, TYPICAL. AN EXCEPTION IS AT THE DUMBWAITER PENETRATION THROUGH FLOOR 7 CEILING.

FLOOR PLAN LEGEND

- EXISTING WALL
- NEW WALL



7TH FLOOR

SCALE: 1/8" = 1'-0"

BID DOCUMENTS

August 9, 2017

ADDENDUM NUMBER

No. 1 - August 17, 2017

ATTACHMENT NUMBER

RECORD OF REVISIONS

No.	DATE	DESCRIPTION

STATE OF ALASKA
SHARED SERVICES OF ALASKA

Facilities Section
PO Box 11210
Juneau, AK 99811-0210

ALASKA STATE OFFICE BUILDING
7TH & 8TH FLOOR RENOVATIONS



NorthWind Architects, LLC
www.NorthWindArch.com
126 Seward Street
Juneau, AK, 99801

DRAWN BY: SB

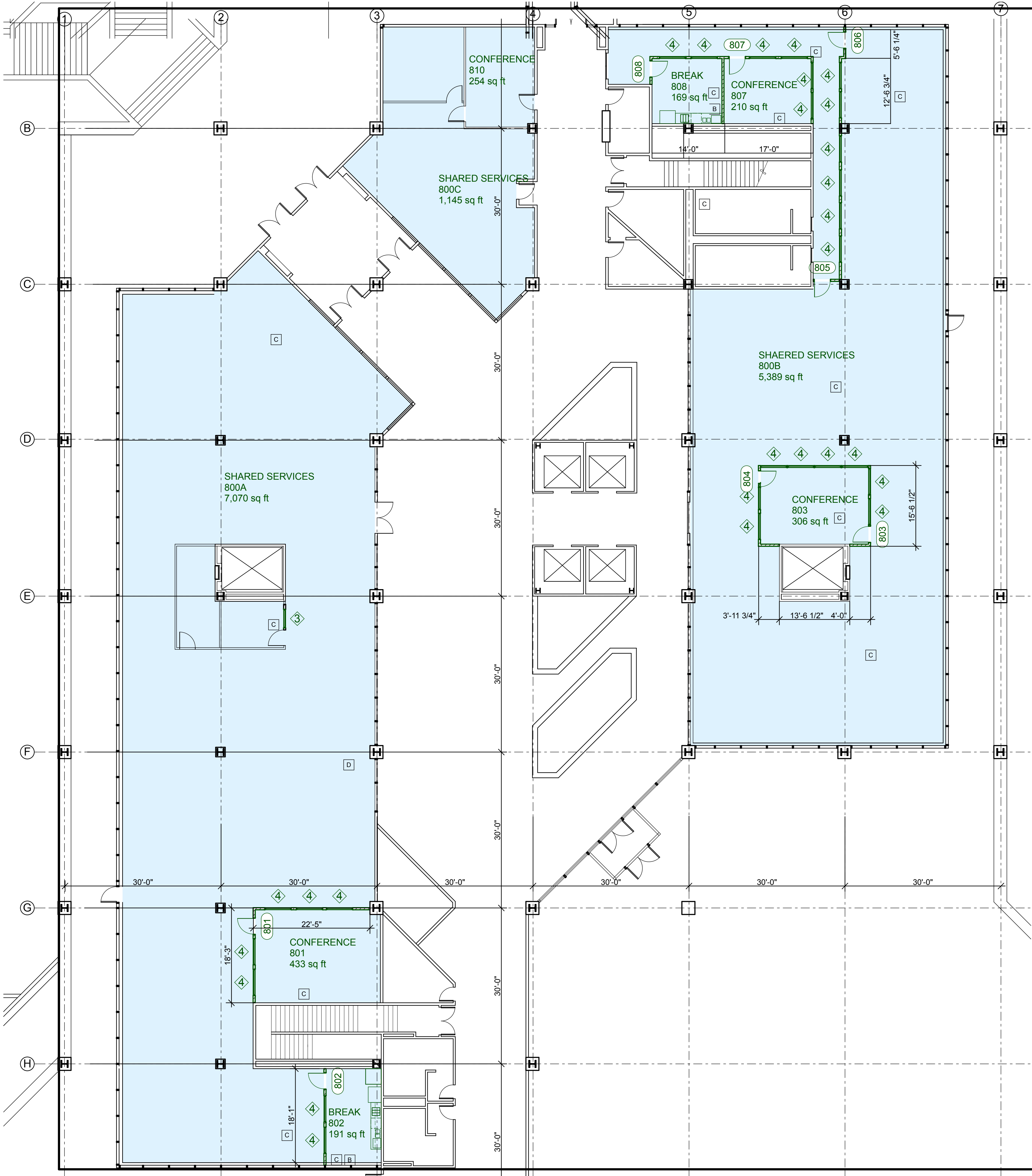
A2.0-7
7TH FLOOR PLAN

PROJECT DESIGNATION NUMBER

2018-0222-3725

STATE
ALASKA

YEAR
2017



8TH FLOOR

SCALE: 3/32" = 1'-0"

FLOOR PLAN GENERAL NOTES

- ALL NEW WALLS TO BE FRAMED WITH 3-5/8" METAL STUDS, WITH 2" WIDE FACE FLANGES, MINERAL WOOL STUD CAVITY ACOUSTIC INSULATION FILL, RESILIENT CHANEL ON ONE SIDE, AND 5/8" TYPE X GYPSUM WALLBOARD, BOTH SIDES, PAINTED. ACOUSTIC SEAL ALL PERIMETERS AND PENETRATIONS. COORDINATE WALL PLACEMENT TO AVOID LIGHT FIXTURES IN CEILING GRID.
- ALL EXISTING WALLS AND SOFFITS TO REMAIN TO BE PATCHED AND PAINTED AS A PART OF THE WORK.
- WHERE WALLS & DEVICES ARE REMOVED IN DEMO, EXTEND ADJACENT FINISHES ACROSS BREACH IN ASSEMBLY.
- CAREFULLY COORDINATE SCOPE OF FLOOR REPAIR AND PREPARATION, FLOORING INSTALLATION AND BASE INSTALLATION WORK BY OTHERS WITH ALL WORK IN THIS CONTRACT.
- COORDINATE NEW CONSTRUCTION WITH ABATEMENT, MECHANICAL AND ELECTRICAL DOCUMENTS.
- ALL TAGGED DOORS ARE NEW DOORS: 3-0 X 7-0 SOLID CORE WOOD DOORS WITH DOUBLE RABBET HOLLOW METAL FRAME, UNLESS OTHERWISE NOTED. BRUSHED NICKEL BUTTS, DOOR STOPS AND CYLINDRICAL LOCKSETS WITH ADA LEVERS, TYPICAL. COORDINATE WITH SCHEDULE ON A0.2, AND WITH SPECIFICATION NOTES.

FLOOR PLAN LEGEND

- EXISTING WALL
- NEW WALL

FLOOR PLAN KEY NOTES

- A FRAME AND PATCH WALL TO MATCH SURROUNDING ASSEMBLIES
- B INSTALL NEW SINK, CASEWORK AND APPLIANCES; TYPICAL CAFE CONFIGURATION - COORDINATE WITH 1/A0.2.
- C COORDINATE WITH FLOORING AND FURNITURE INSTALLATION BY OTHERS.
- D INSTALL 1/4" THICK CONTINUOUS STEEL PLATE AT OPENING WHERE DUMBWAITER HAS BEEN REMOVED. FINISH WITH TOP 1" BELOW SURROUNDING CONCRETE. SUPPORT WITH 2X2 STEEL ANGLE PERIMETER WELDED TO DECK, AND 2X2 STEEL ANGLE STIFFENERS AT NO MORE THAN 24" O.C. ALL WELDED CONSTRUCTION. LEVEL TO SURROUNDING FLOOR WITH CEMENTITIOUS FLOOR LEVELING COMPOUND. FIREPROOF PATCHING TO BE APPLIED TO UNDERSIDE OF ASSEMBLY; WR GRACE MONOKOTE OR APPROVED EQUAL IN THICKNESS TO MATCH SURROUNDING FOR EQUIVALENT RATING.

BID
DOCUMENTS

August 9, 2017

ADDENDUM NUMBER

No. 1 - August 17, 2017

ATTACHMENT NUMBER

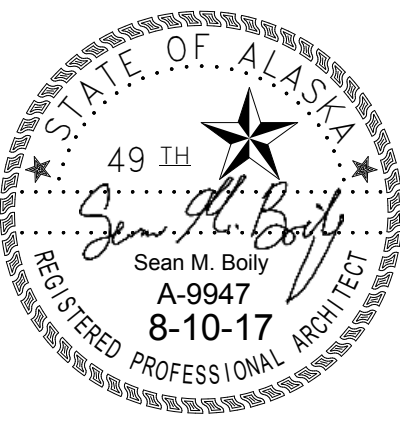
RECORD OF REVISIONS

No.	DATE	DESCRIPTION

STATE OF ALASKA
SHARED SERVICES OF ALASKA

Facilities Section
PO Box 11210
Juneau, AK 99811-0210

ALASKA STATE OFFICE BUILDING
7TH AND 8TH FLOOR RENOVATIONS



NorthWind Architects, LLC
www.NorthWindArch.com
126 Seward Street
Juneau, AK, 99801

1" ACTUAL

IF THE ABOVE DIMENSION DOES NOT MEASURE ONE INCH (1") EXACTLY, THIS DRAWING WILL HAVE BEEN ENLARGED OR REDUCED, AFFECTING ALL LABELED SCALES.

DRAWN BY: SB

A2.1-8
8TH FLOOR PLAN

PROJECT DESIGNATION NUMBER

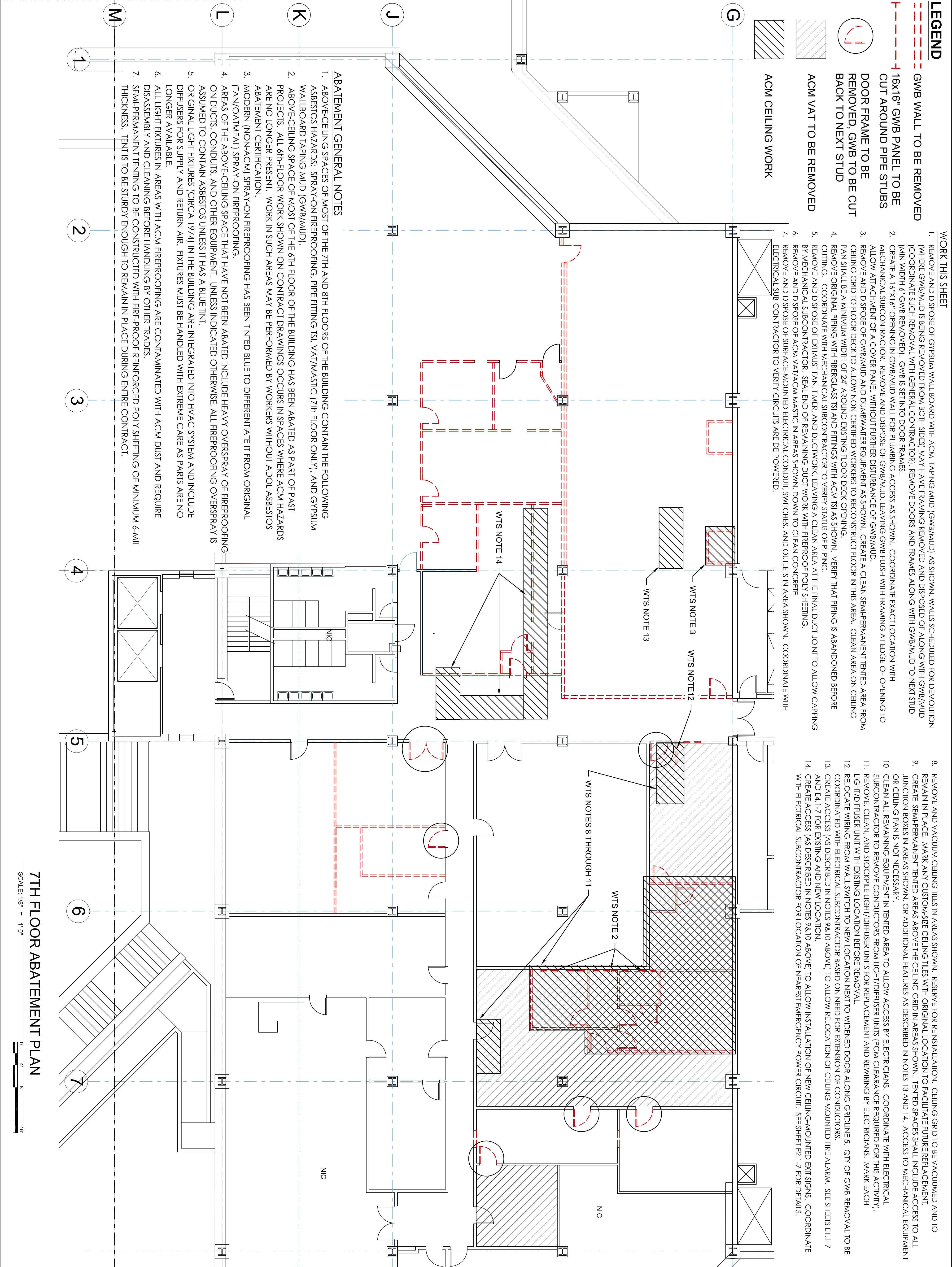
2018-0222- 3725


STATE

ALASKA

YEAR

2017



BID DOCUMENTS August 9, 2017	
ADDENDUM NUMBER Addendum No. 1, 16 Aug 2017	
ATTACHMENT NUMBER	
RECORD OF REVISIONS	
No.	DATE DESCRIPTION
STATE OF ALASKA SHARED SERVICES OF ALASKA Facilities Section PO Box 11210 Juneau, AK 99811-0210 ALASKA STATE OFFICE BUILDING 7TH & 8TH FLOOR RENOVATIONS	
<div><div><p>NorthWind Architects, LLC www.NorthWindArch.com 126 Seward Street Juneau, AK, 99801</p><p>Dahlberg Design, LLC. www.dahlberg.design 222 Seward Street Juneau, AK, 99801</p></div><div><p>IF THE ABOVE DIMENSION DOES NOT MEASURE ONE INCH (1") EXACTLY, THIS DRAWING WILL HAVE BEEN ENLARGED OR REDUCED, AFFECTING ALL LABELED SCALES.</p><p>DRAWN BY: GDM [08-06-2017]</p><p>← Actual →</p></div></div>	
7TH FLOOR DEMOLITION PLAN PROJECT DESIGNATION NUMBER 2018-0222-3725	
STATE ALASKA	YEAR 2017