



## PUBLIC NOTICE

### Future Release of Exploration Data and Information

### National Petroleum Reserve-Alaska (NPRA), North Slope and Cook Inlet, Alaska

The Alaska Department of Natural Resources (ADNR), Division of Oil and Gas (Division) will release and make available to the public the following exploration well and seismic data and information, as submitted to the Division, no less than 30 days following this notice. The Division is providing public notice under AS 43.55.025(f)(2)(C).

#### NPRA, Alaska

**Survey:** NE NPRA 3D (NPR A)

**Location:** Umiat Meridian Township 18N, Range 2-8W; Township 17N, Range 1-8W; Township 16N, Range 2-8W; Township 15N, Range 2-6W; Township 14N, Range 2-4W; Township 13N, Range 3-4W

**Survey:** Puviaq South 3D (NPR A)

**Location:** Umiat Meridian Township 14N, Range 11-14W; Township 13N, Range 11-16W; Township 12N, Range 12-16W, Township 11N, Range 14-15W

#### North Slope, Alaska

**MLUP:** MLUP/CI 04-006 Storms 3D

**Permitee:** Veritas DGC Land Inc.

**Location:** Umiat Meridian Township 7-11N, Range 10-14E

**MLUP:** MLUP/NS 04-008 Foothills 2D (aka Toolik 2D)

**Permittee:** Petro-Canada and PGS Onshore Inc.

**Location:** Umiat Meridian Township 1N, Range 9E; Township 1S, Range 9E; Township 2S, Range 7-11E, Township 3S, Range 9-11E; Township 4S, Range 9-13E; Township 5S, Range 6-14E; Township 6S, Range 5-12E; Township 7S, Range 9-11E; Township 8-9S, Range 9E; Township 9-12S, Range 4-5E; Township 13S, Range 4E

**MLUP:** MLUP/NS 05-002 Harrison Bay 3D

**Permittee:** Veritas DGC Land Inc.

**Location:** Umiat Meridian Township 14-16N, Range 1-2W; Township 14-16N, Range 1E; Township 14N, Range 2E

**MLUP:** MLUP/NS 06-009-02 White Hills 2D

**Permittee:** Veritas DGC Land

**Location:** Umiat Meridian Township 9N, Range 9E; Township 6-8N, Range 8-10E; Township 5N, Range 7-10E; Township 4N, Range 8-9E; Township 3N, Range 8-10 E; Township 2N, Range 9E

**Cook Inlet, Alaska**

**MLUP:** MLUP/CI 04-003 Cosmopolitan 3D – Offshore  
**Permitee:** Veritas DGC Land  
**Location:** Seward Meridian Township 3-5S, Range 15-16W

**Current Operator:** BlueCrest Alaska Operating LLC  
**Well Name:** Cosmopolitan State 1  
**API Number:** 50-831-20043-0000  
**Location:** Seward Meridian, Township 3S, Range 15W

Americans with Disabilities Act Compliance: The State of Alaska, DNR, DO&G complies with Title I of the Americans with Disabilities Act 1990. This publication will be made available in alternative communication formats upon request. Please call (907) 269-8800 or email [diane.hunt@alaska.gov](mailto:diane.hunt@alaska.gov) to make any necessary arrangements.

**Posted:** 8/16/2017

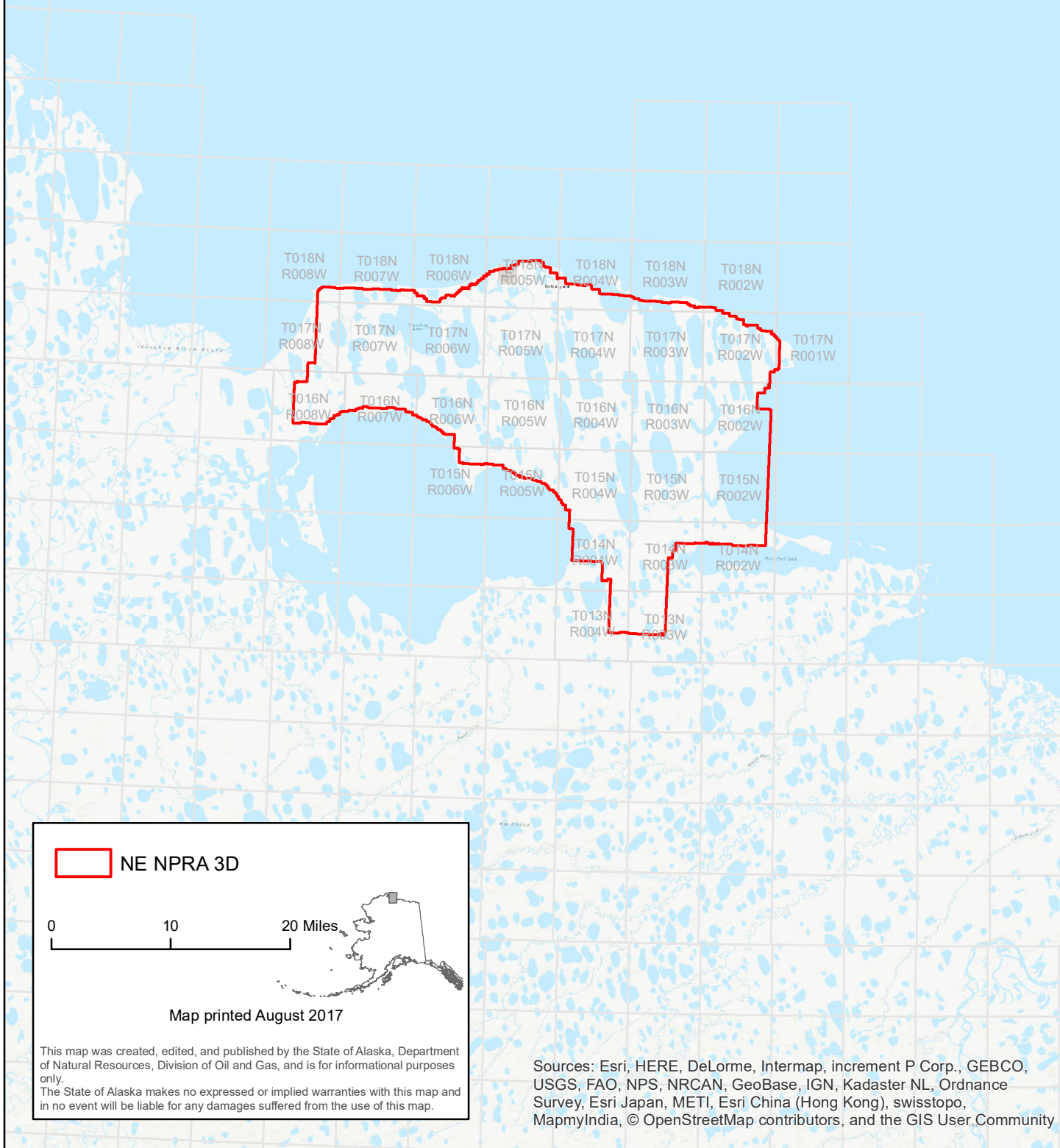


# AS 43.55.025(f)(2) NE NPRA 3D Seismic Survey



## NPR-A

Umiat Meridian T18N, R2-8W; T17N, R1-8W; T16N,  
R2-8W; T15N, R2-6W; T14N, R2-4W; T13N, R3-4W



NE NPRA 3D

0 10 20 Miles



Map printed August 2017

This map was created, edited, and published by the State of Alaska, Department of Natural Resources, Division of Oil and Gas, and is for informational purposes only. The State of Alaska makes no expressed or implied warranties with this map and in no event will be liable for any damages suffered from the use of this map.

Sources: Esri, HERE, DeLorme, Intermap, increment P Corp., GEBCO, USGS, FAO, NPS, NRCAN, GeoBase, IGN, Kadaster NL, Ordnance Survey, Esri Japan, METI, Esri China (Hong Kong), swisstopo, MapmyIndia, © OpenStreetMap contributors, and the GIS User Community

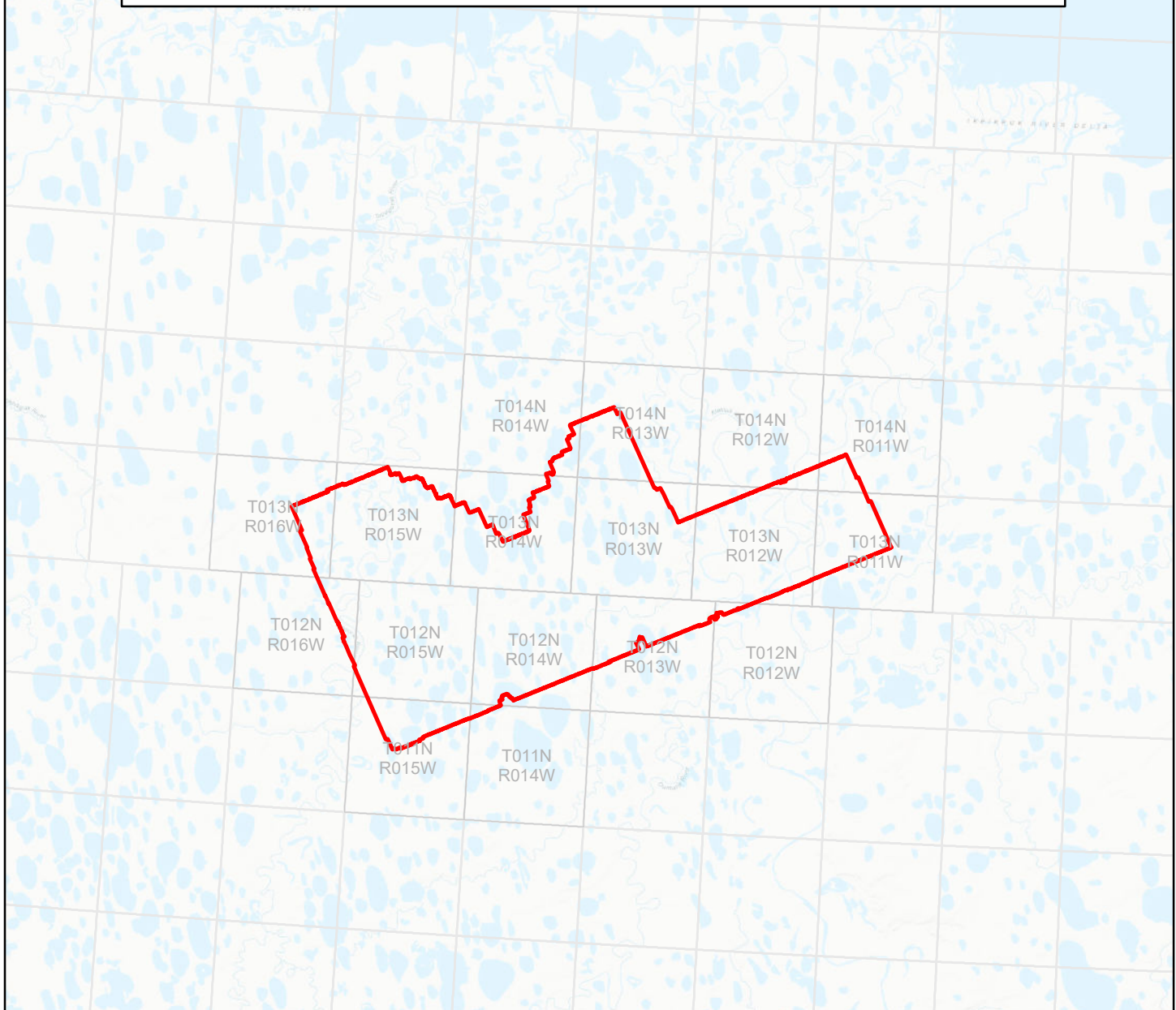



# AS 43.55.025(f)(2) Puviaq South 3D Seismic Survey




## NPR-A

Umiat Meridian T14N, R11-14W; T13N, R11-16W;  
T12N, R12-16W, T11N, R14-15W



 Puviaq South 3D

0 5 10 Miles



Map printed August 2017

This map was created, edited, and published by the State of Alaska, Department of Natural Resources, Division of Oil and Gas, and is for informational purposes only. The State of Alaska makes no expressed or implied warranties with this map and in no event will be liable for any damages suffered from the use of this map.

Sources: Esri, HERE, DeLorme, Intermap, increment P Corp., GEBCO, USGS, FAO, NPS, NRCAN, GeoBase, IGN, Kadaster NL, Ordnance Survey, Esri Japan, METI, Esri China (Hong Kong), swisstopo, MapmyIndia, © OpenStreetMap contributors, and the GIS User Community

Nikaitchuk

Oooguruk



**AS 43.55.025(f)(2)**  
**Storms 3D Seismic Survey**  
**MLUP/NS 04-006**  
**Umiat Meridian T7-11N, R10-14E**



Point

Prudhoe Bay

Beechey Point

Dewline

Duck Island

Kuparuk River

Prudhoe Bay

Prudhoe Bay

Prudhoe Bay

Deadhorse

T011N  
R011E

T011N  
R012E

T010N  
R014E

T010N  
R011E

T010N  
R012E

T010N  
R013E

T009N  
R011E

T009N  
R012E

T009N  
R013E

T009N  
R014E

T008N  
R011E

T008N  
R012E

T008N  
R013E

T008N  
R014E

T007N  
R012E

T007N  
R013E

Delton Highway

Storms 3D

Oil & Gas Units

0 4 8 Miles

Map printed August 2017

This map was created, edited, and published by the State of Alaska, Department of Natural Resources, Division of Oil and Gas, and is for informational purposes only. The State of Alaska makes no expressed or implied warranties with this map and in no event will be liable for any damages suffered from the use of this map.

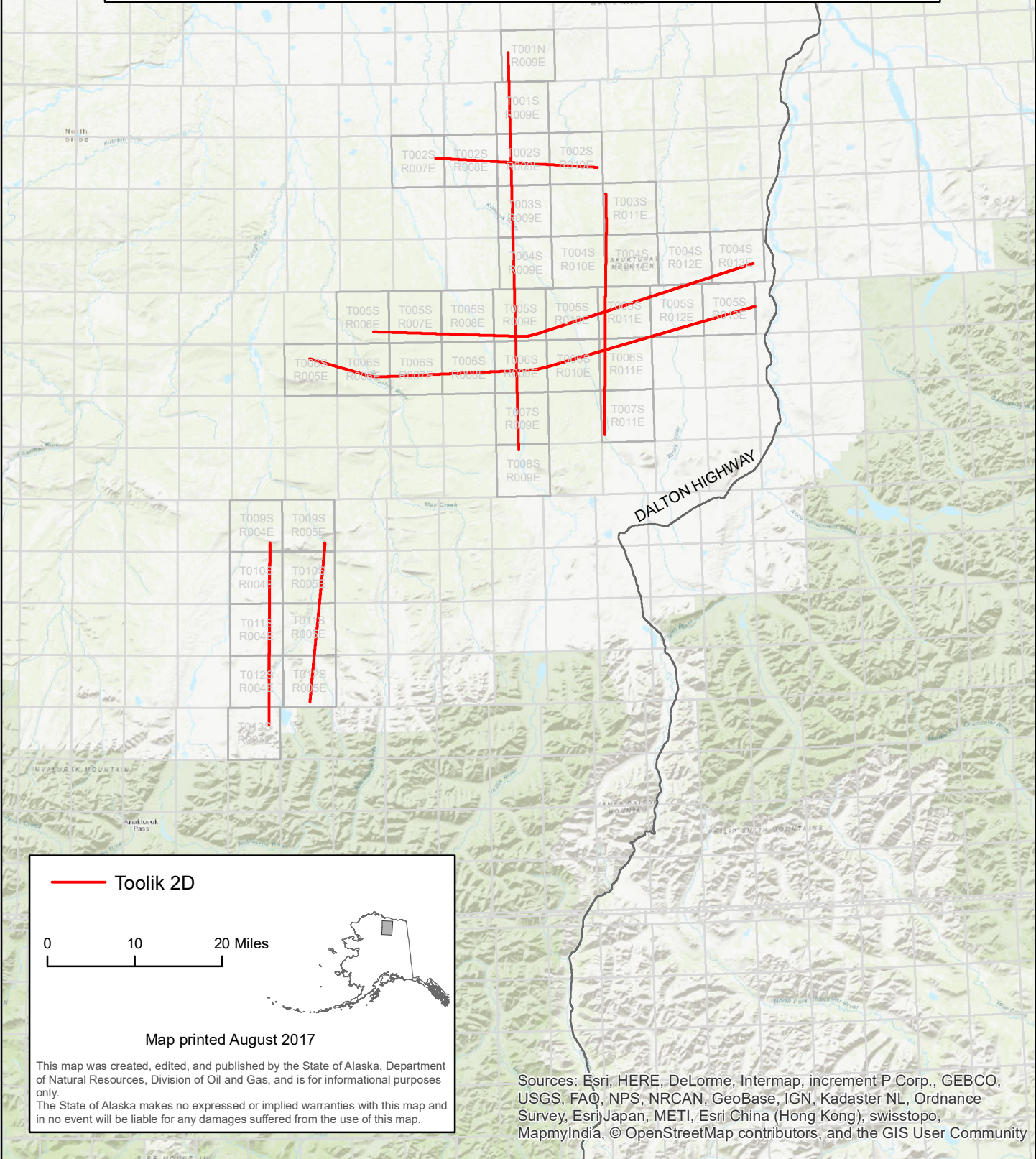
Sources: Esri, HERE, DeLorme, Intermap, increment P Corp., GEBCO, USGS, FAO, NPS, NRCAN, GeoBase, IGN, Kadaster NL, Ordnance Survey, Esri Japan, METI, Esri China (Hong Kong), swisstopo, MapmyIndia, © OpenStreetMap contributors, and the GIS User Community



# AS 43.55.025(f)(2) Toolik 2D Seismic Survey MLUP/NS 04-008



Umiat Meridian T1N, R9E; T1S, R9E; T2S, R7-11E, T3S, R9-11E; T4S, R9-13E; T5S, R6-14E; T6S, R5-12E; T7S, R9-11E; T8-9S, R9E; T9-12S, R4-5E; T13S, R4E



**— Toolik 2D**

0 10 20 Miles

Map printed August 2017

This map was created, edited, and published by the State of Alaska, Department of Natural Resources, Division of Oil and Gas, and is for informational purposes only. The State of Alaska makes no expressed or implied warranties with this map and in no event will be liable for any damages suffered from the use of this map.

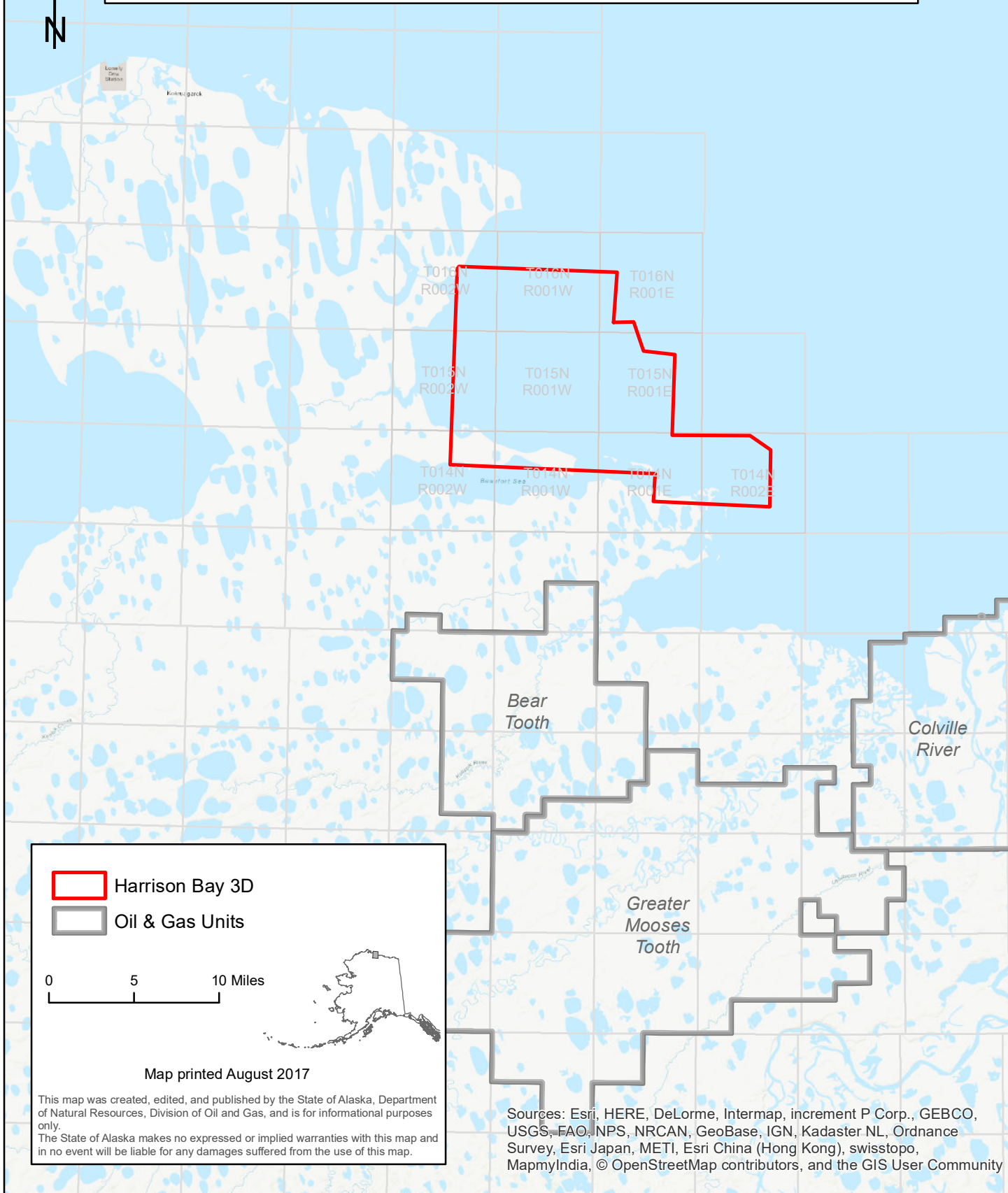
Sources: Esri, HERE, DeLorme, Intermap, increment P Corp., GEBCO, USGS, FAO, NPS, NRCAN, GeoBase, IGN, Kadaster NL, Ordnance Survey, Esri Japan, METI, Esri China (Hong Kong), swisstopo, MapmyIndia, © OpenStreetMap contributors, and the GIS User Community





# AS 43.55.025(f)(2) Harrison Bay 3D Seismic Survey MLUP/NS 05-002



Umait Meridian T14-16N, R1-2W; T14-16N, R1E; T14N, R2E



-  Harrison Bay 3D
-  Oil & Gas Units

0 5 10 Miles



Map printed August 2017

This map was created, edited, and published by the State of Alaska, Department of Natural Resources, Division of Oil and Gas, and is for informational purposes only. The State of Alaska makes no expressed or implied warranties with this map and in no event will be liable for any damages suffered from the use of this map.

Sources: Esri, HERE, DeLorme, Intermap, increment P Corp., GEBCO, USGS, FAO, NPS, NRCAN, GeoBase, IGN, Kadaster NL, Ordnance Survey, Esri Japan, METI, Esri China (Hong Kong), swisstopo, MapmyIndia, © OpenStreetMap contributors, and the GIS User Community

Colville River



# AS 43.55.025(f)(2) White Hills 2D Seismic Survey



## MLUP/NS 06-009-02

Umiat Meridian T9N, R9E; T6-8N, R8-10E; T5N, R7-10E; T4N, R8-9E; T3N, R8-10 E; T2N, R9E



Kuparuk River

T009N  
R009E

T008N  
R008E

T008N  
R009E

T008N  
R010E

T007N  
R008E

T007N  
R009E

T007N  
R010E

T006N  
R008E

T006N  
R009E

T006N  
R010E

T005N  
R007E

T005N  
R008E

T005N  
R009E

T005N  
R010E

T004N  
R008E

T004N  
R009E

T003N  
R008E

T003N  
R009E

T003N  
R010E

T002N  
R009E

DALTON HIGHWAY

DALTON HIGHWAY

- White Hills 2D
- Oil & Gas Units

0 5 10 Miles



Map printed August 2017

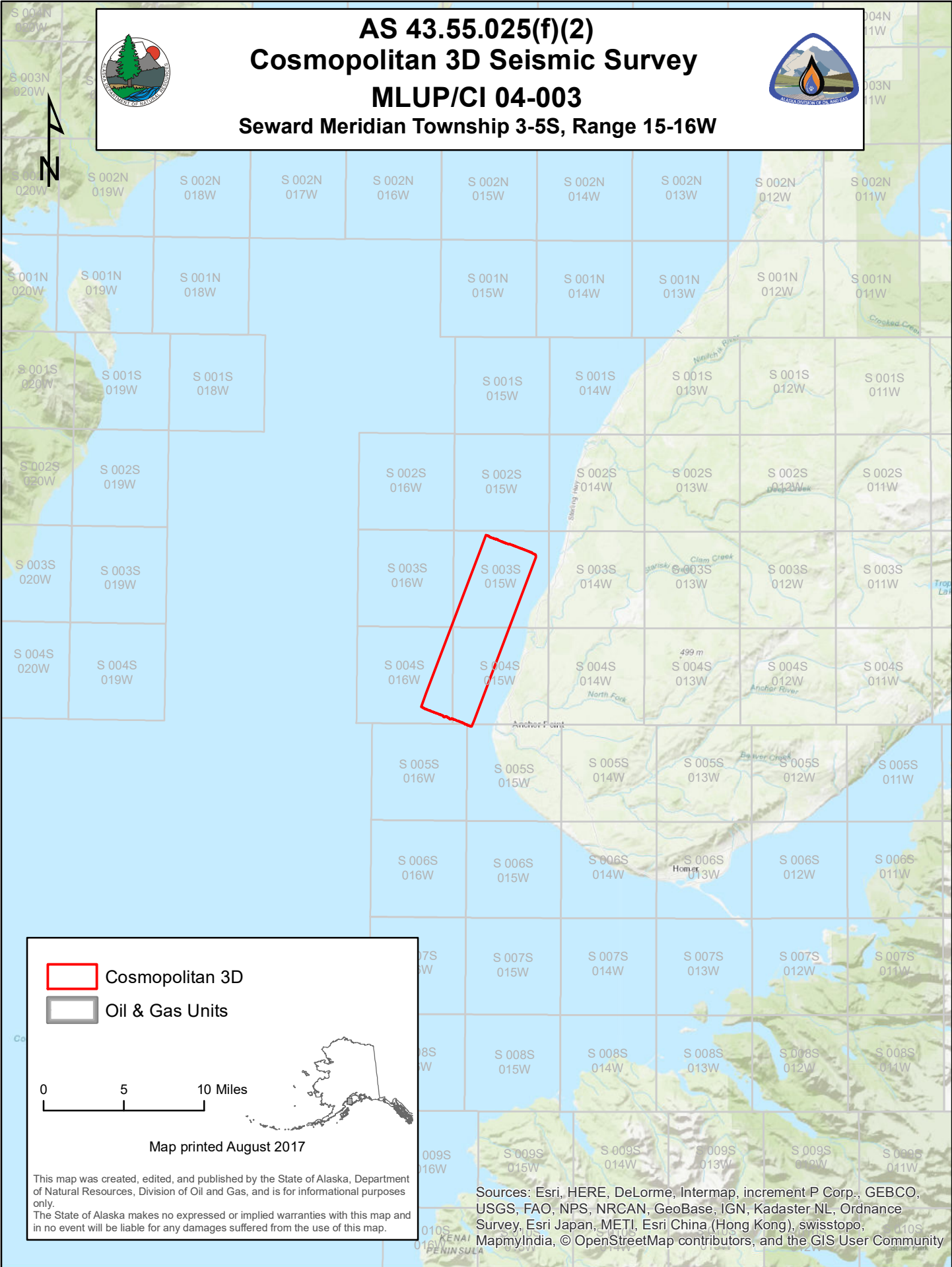
This map was created, edited, and published by the State of Alaska, Department of Natural Resources, Division of Oil and Gas, and is for informational purposes only. The State of Alaska makes no expressed or implied warranties with this map and in no event will be liable for any damages suffered from the use of this map.



Sources: Esri, HERE, DeLorme, Intermap, increment P Corp., GEB CO, USGS, FAO, NPS, NRCAN, GeoBase, IGN, Kadaster NL, Ordnance Survey, Esri Japan, METI, Esri China (Hong Kong), swisstopo, MapmyIndia, © OpenStreetMap contributors, and the GIS User Community





# AS 43.55.025(f)(2) Cosmopolitan 3D Seismic Survey MLUP/CI 04-003 Seward Meridian Township 3-5S, Range 15-16W



 Cosmopolitan 3D  
 Oil & Gas Units

0      5      10 Miles

Map printed August 2017

This map was created, edited, and published by the State of Alaska, Department of Natural Resources, Division of Oil and Gas, and is for informational purposes only. The State of Alaska makes no expressed or implied warranties with this map and in no event will be liable for any damages suffered from the use of this map.

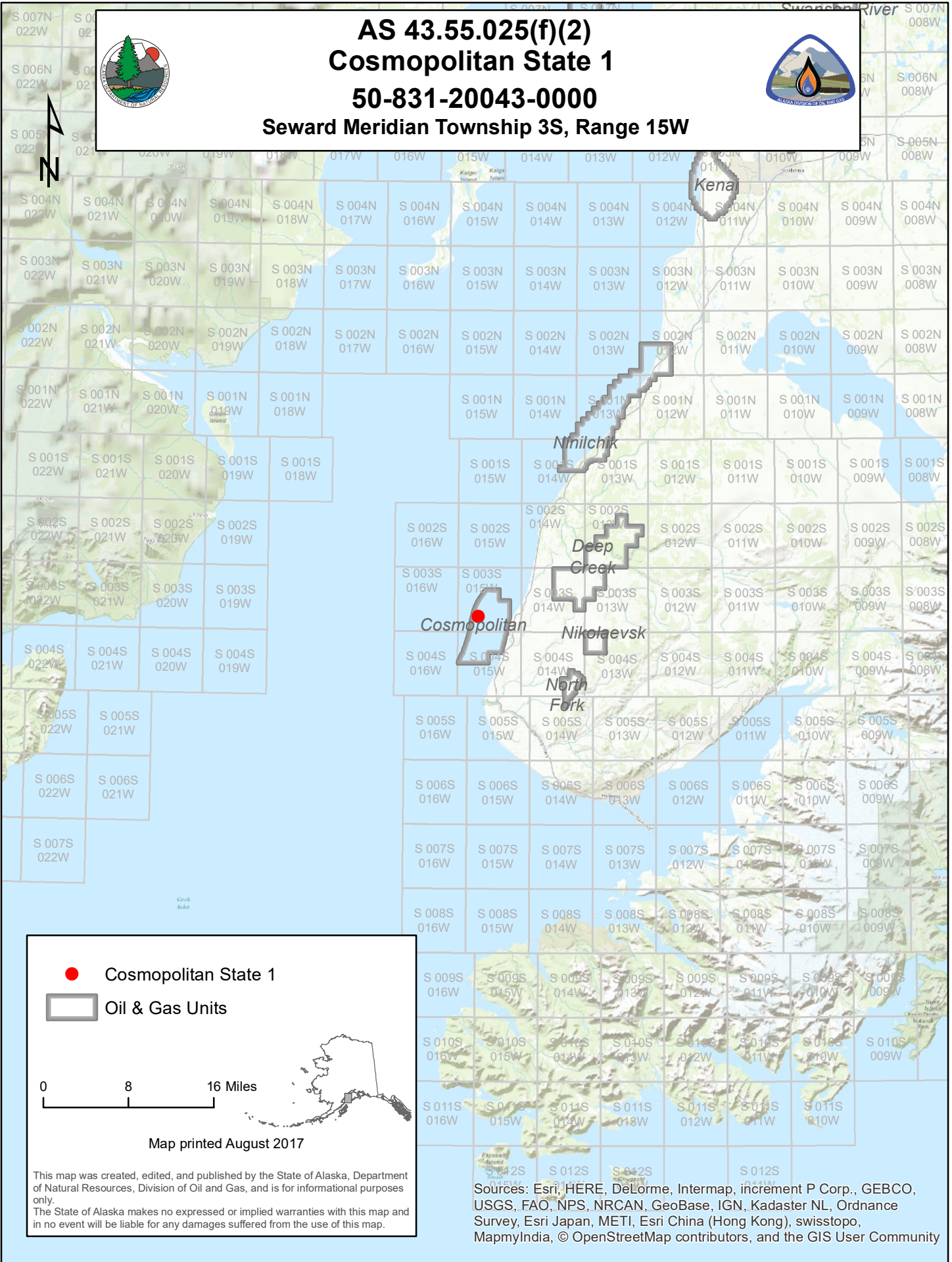
Sources: Esri, HERE, DeLorme, Intermap, increment P Corp., GEBCO, USGS, FAO, NPS, NRCAN, GeoBase, IGN, Kadaster NL, Ordnance Survey, Esri Japan, METI, Esri China (Hong Kong), swisstopo, MapmyIndia, © OpenStreetMap contributors, and the GIS User Community



# AS 43.55.025(f)(2) Cosmopolitan State 1

## 50-831-20043-0000

### Seward Meridian Township 3S, Range 15W



● Cosmopolitan State 1  
 Oil & Gas Units

0      8      16 Miles

Map printed August 2017

This map was created, edited, and published by the State of Alaska, Department of Natural Resources, Division of Oil and Gas, and is for informational purposes only. The State of Alaska makes no expressed or implied warranties with this map and in no event will be liable for any damages suffered from the use of this map.

Sources: Esri, HERE, DeLorme, Intermap, increment P Corp., GEBCO, USGS, FAO, NPS, NRCAN, GeoBase, IGN, Kadaster NL, Ordnance Survey, Esri Japan, METI, Esri China (Hong Kong), swisstopo, MapmyIndia, © OpenStreetMap contributors, and the GIS User Community