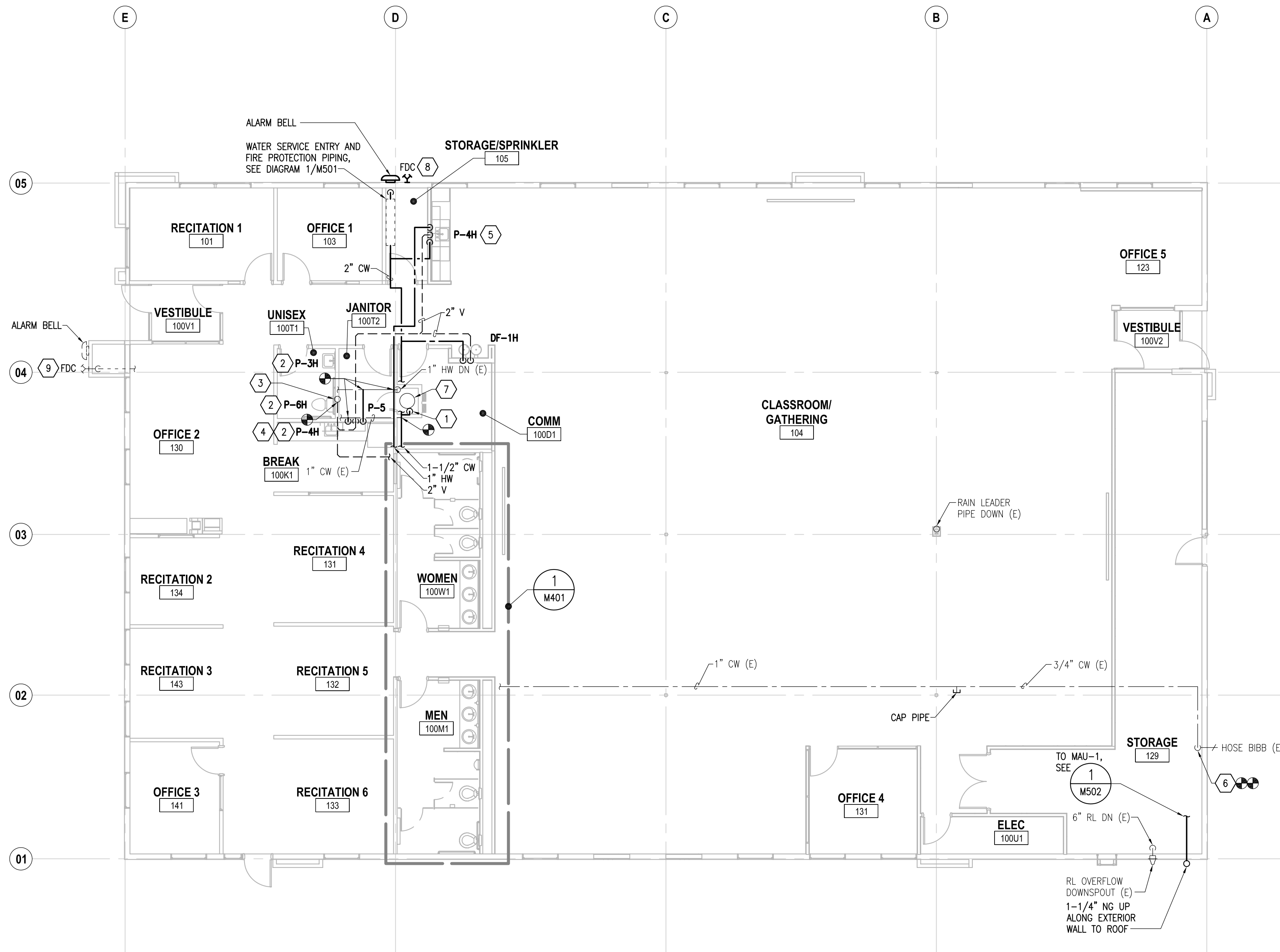
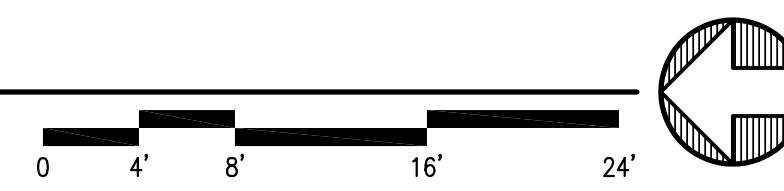


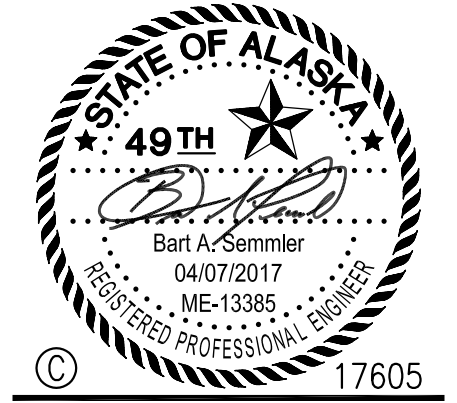
FILE NAME: X:\17605 - ANSEP\Drawings\Sheet Files\17605 - M202.dwg
 PLOTTED: BAS 4/17/2017 4:17 PM



1 FLOOR PLAN - PLUMBING
 M202 SCALE: 1/8" = 1'-0"



- ### SHEET NOTES
- 1 1" CW DOWN TO WATER HEATER.
 - 2 CONNECT NEW PLUMBING FIXTURE TO EXISTING WASTE, VENT, HOT WATER, AND COLD WATER PIPING.
 - 3 EXISTING 2" VERTICAL VENT UP TO 3" VTR.
 - 4 PROVIDE ADDITIONAL COLD WATER STOP ON PIPE SERVING SINK P-4H TO SERVE REFRIGERATOR WATER/ICE DISPENSER. PROVIDE ADDITIONAL HOT WATER STOP ON PIPE SERVING SINK P-4H TO SERVE DISHWASHER.
 - 5 PROVIDE ADDITIONAL HOT WATER STOP ON PIPE SERVING SINK P-4H TO SERVE DISHWASHER.
 - 6 VERTICAL COLD WATER PIPE SERVING EXTERIOR HOSE BIBB WILL BE EXPOSED. PROVIDE UNISTRUT CHANNELS FOR PIPE SUPPORT AND MODIFY COLD WATER PIPE TO BE TIGHT TO EXTERIOR WALL.
 - 7 EXISTING WATER HEATER. PROVIDE SEISMIC STRAPS.
 - 8 FIRE DEPARTMENT CONNECTION AND ALARM BELL APPROXIMATELY 160 FEET FROM NEAREST FIRE HYDRANT. COORDINATE APPROVED LOCATION WITH AHJ.
 - 9 ALTERNATE LOCATION OF FIRE DEPARTMENT CONNECTION AND ALARM BELL APPROXIMATELY 100 FEET FROM THE NEAREST FIRE HYDRANT. COORDINATE APPROVED LOCATION WITH AHJ.
 - 10 AS-BUILT CONDITIONS ARE BASED UPON ORIGINAL CONSTRUCTION DRAWINGS DATED 10/18/84. FIELD VERIFY.
 - 11 FLOOR PLAN SHOWN IS FOR BASE BID; NO CHANGE IN PLUMBING WORK BETWEEN BASE BID AND ALTERNATES.
 - 12 SEE 3/M501 FOR TYPICAL PIPE FULL-HEIGHT WALL PENETRATION DETAIL.



UAA ANSEP ULA RENOVATION
UNIVERSITY LAKE BUILDING -
BUILDING AO 107
UNIVERSITY OF ALASKA ANCHORAGE
FLOOR PLAN - PLUMBING

PROJECT TITLE:
 ADDRESS:
 OWNER:
 SHEET TITLE:

NO	DESCRIPTION	DATE

DATE : 2017.04.07
 PROJECT NO : 17-0103
 DRAWN BY : BAS
 CHECKED BY : MDL
 COPYRIGHT :

DWG NO:
M202