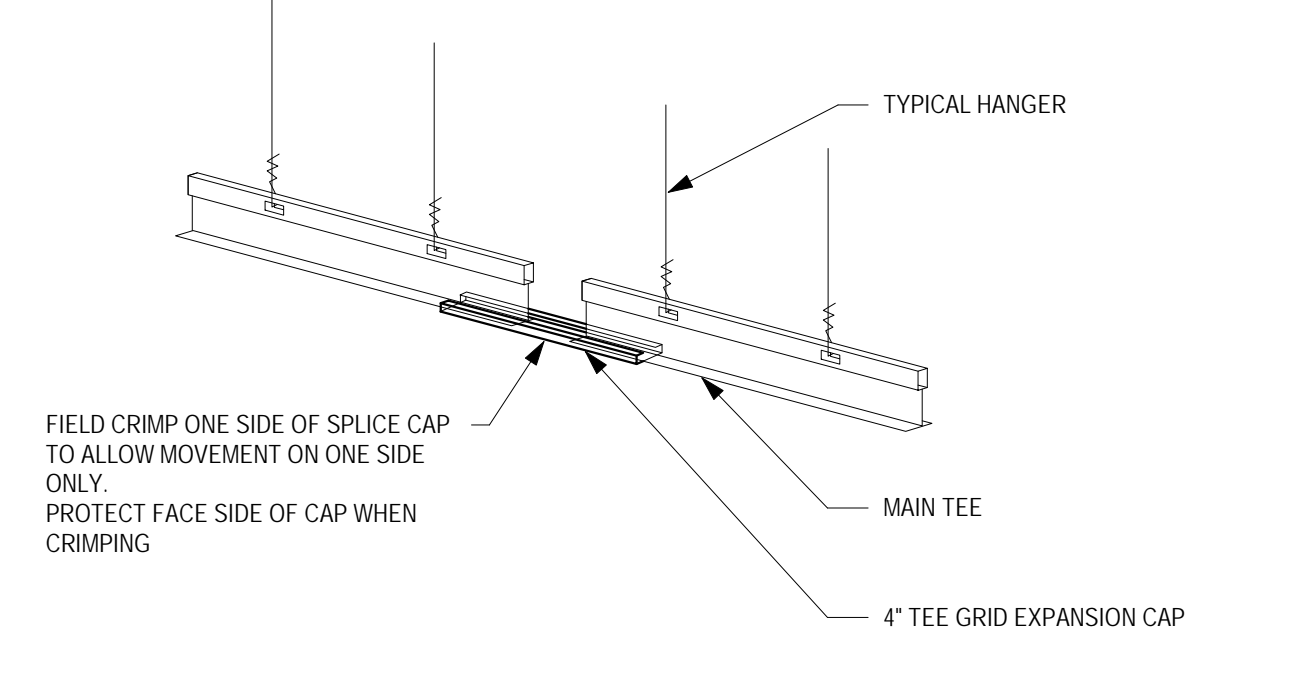
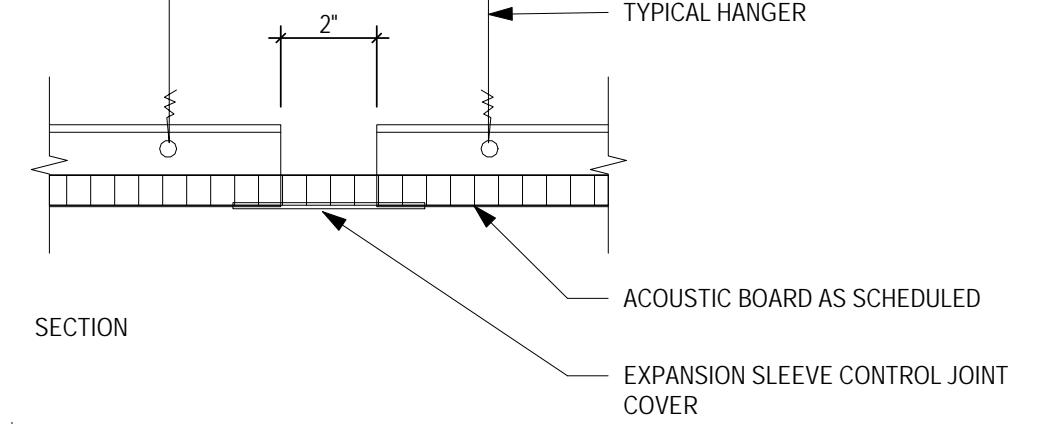
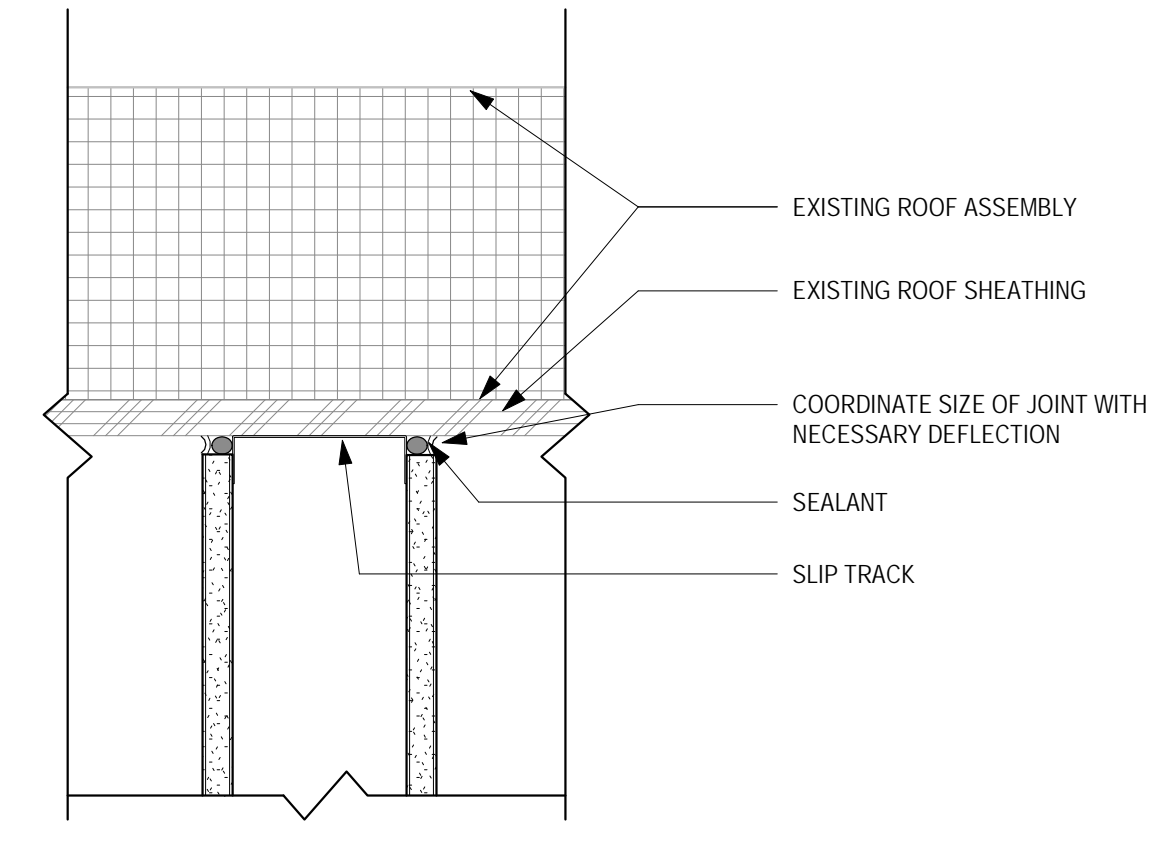


MINIMUM NO. 12 GA. SUSPENSION WIRES ARE REQUIRED @ 4'-0" OC. NOT MORE THAN 1 IN 6 OUT OF PLUMB. PERIMETER HANGERS ARE REQUIRED WITHIN 8" OF WALLS. ENDS OF ALL TEES ARE REQUIRED TO BE TIED TOGETHER TO PREVENT SPREADING. CEILING TEES MAY BE ATTACHED AND SNUG TO WALL ANGLES ONLY AT TWO ADJACENT WALLS. (3/4" CLEARANCE BETWEEN WALL AND END OF TEE AT OTHER TWO WALLS). LATERAL FORCE BRACING (SHOWN ABOVE) CONSISTING OF HORIZONTAL RESTRAINT POINTS VERTICAL STRUT ARE REQUIRED @ 12'-0" OC BOTH DIRECTIONS BEGINNING WITHIN 6'-0" OF EACH WALL. LATERAL FOR BRACING MEMBERS ARE TO BE 6" MIN FROM ALL UNBRACED HORIZONTAL PIPING AND DUCTS. SUPPORTS FOR LIGHT FIXTURES AND MECHANICAL DEVICES VARY ACCORDING TO WEIGHT. REFER TO IBC FOR ADDITIONAL REQUIREMENTS. PROVIDE SIMILAR CONDITIONS AT SUSPENDED GYPSUM BOARD CEILINGS UNLESS GYPSUM BOARD CEILING IS ON ONE LEVEL EXTENDING FROM WALL TO WALL.

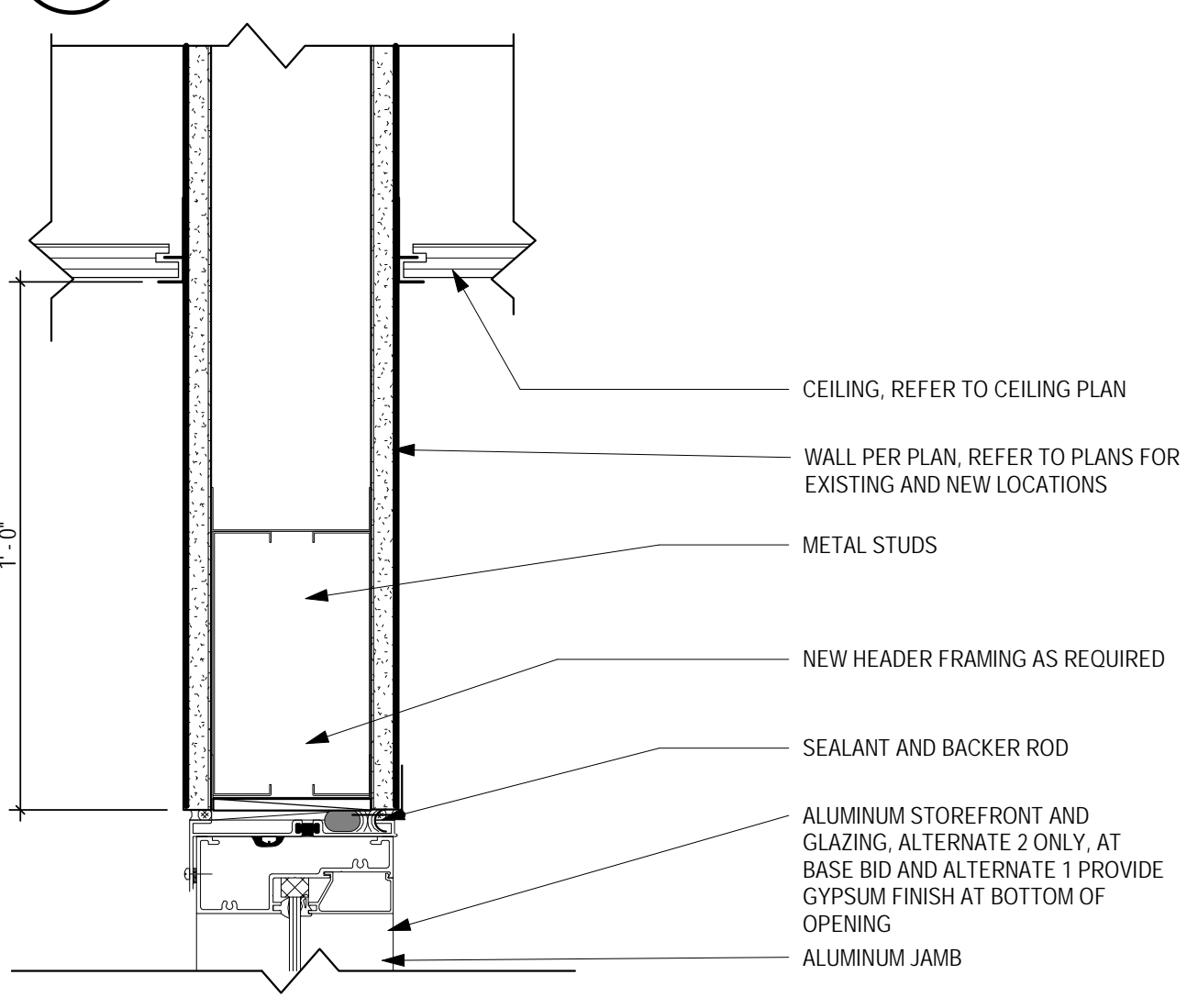
10 SEISMIC BRACING DETAIL, CEILING-TYPICAL
A501 3" = 1'-0"



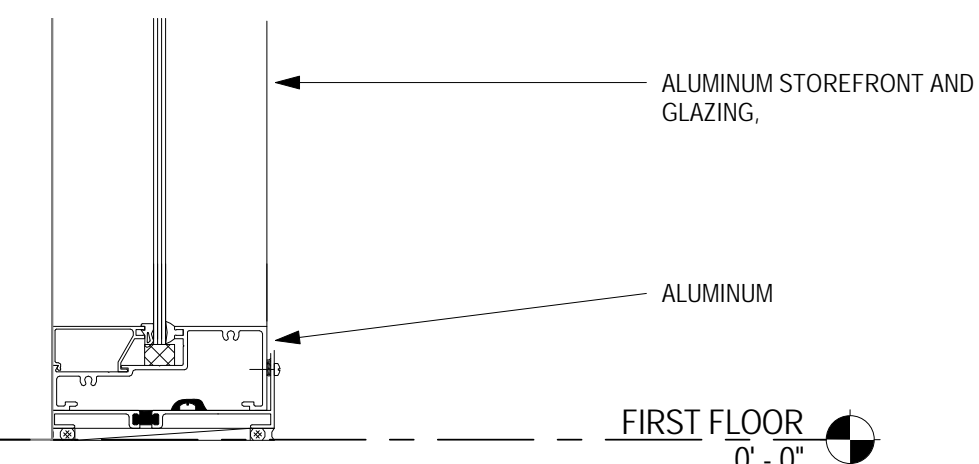
9 SEISMIC CONTROL JOINT, CEILING-TYPICAL
A501 3" = 1'-0"



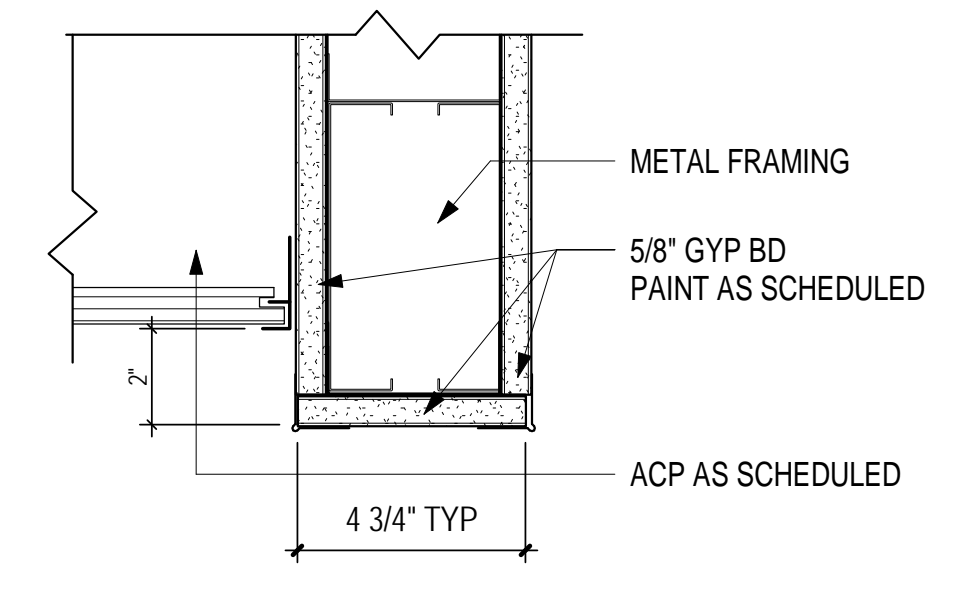
8 TOP OF WALL DEFLECTION TRACK
A501 3" = 1'-0"



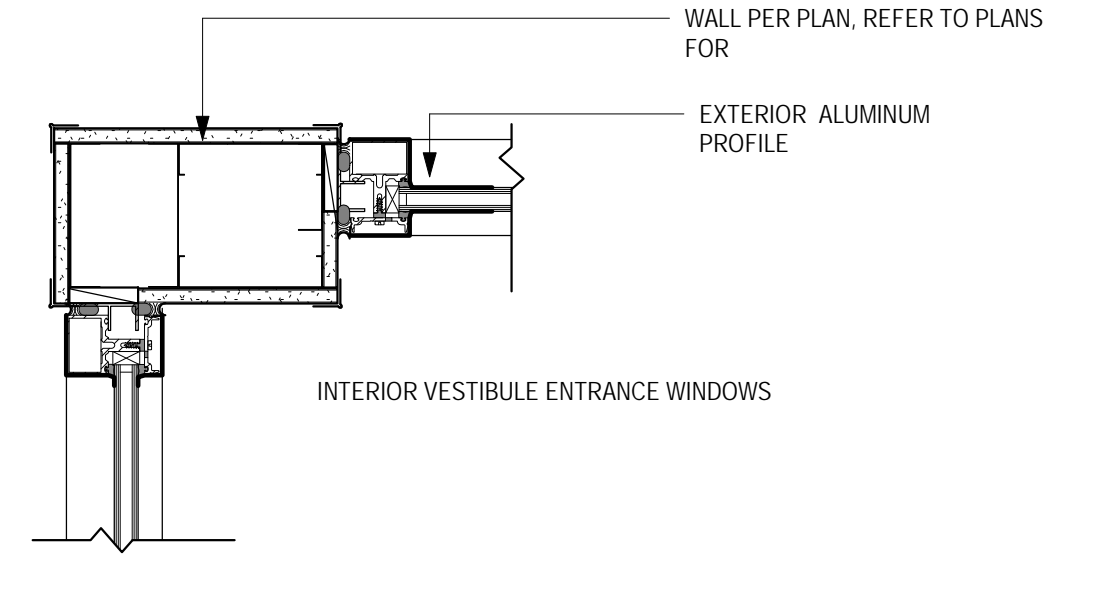
7 INT STOREFRONT HEAD
A501 3" = 1'-0"



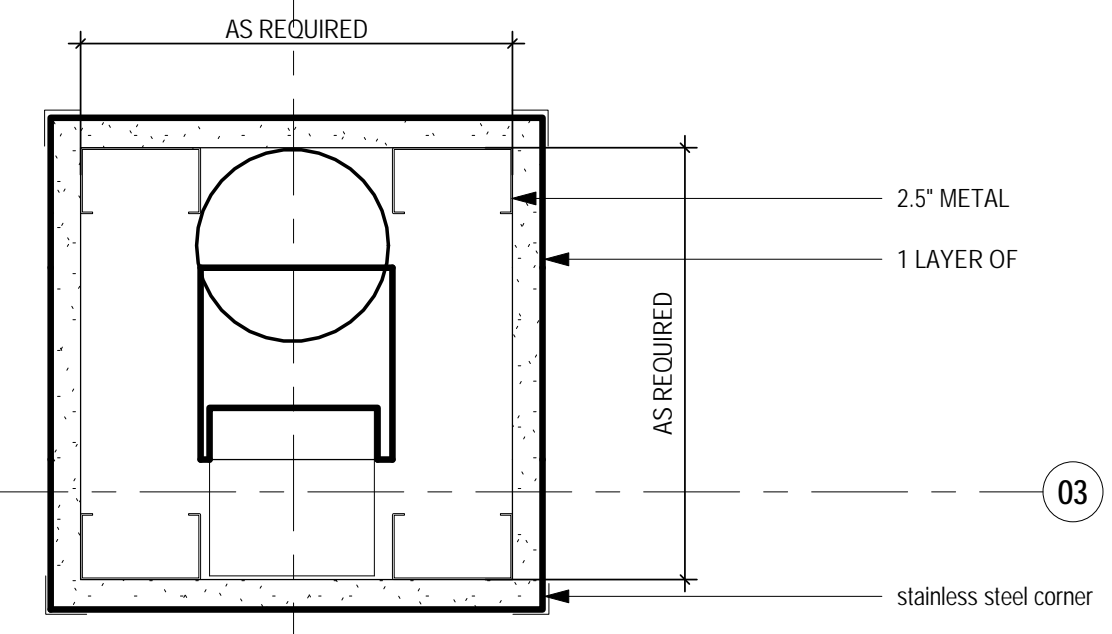
6 STOREFRONT-SILL DETAIL
A501 3" = 1'-0"



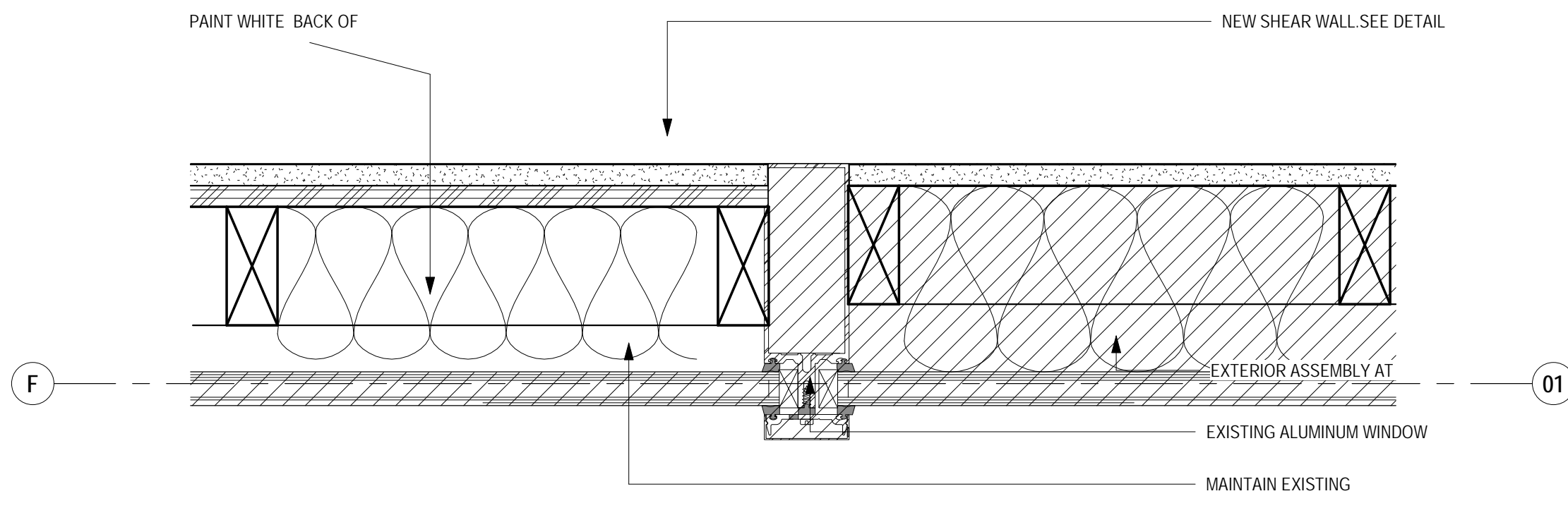
5 GWB BULKHEAD @ ACP
A501 3" = 1'-0"



4 DETAIL AT JAMB
A501 1 1/2" = 1'-0"

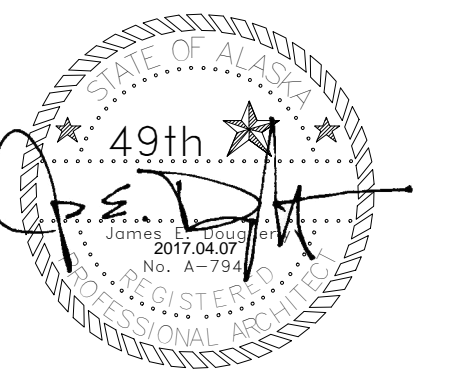


2 COLUMN ENCLOSURE
A501 3" = 1'-0"



1 DETAIL AT INFILL
A501 3" = 1'-0"

DESTRUCTIVE EXPLORATORY WORK IS REQUIRED TO COORDINATE DETAIL. WHEN OPENED CONTACT STRUCTURAL ENGINEER AND



CONSTRUCTION DOCUMENTS

JAA ANSEP ULA RENOVATION
UNIVERSITY LAKE BUILDING -
BUILDING AO 107
UNIVERSITY OF ALASKA ANCHORAGE
DETAILS

PROJECT TITLE:
ADDRESS:
OWNER:
SHEET TITLE:

NO	DESCRIPTION	DATE

DATE : 2017.04.07
PROJECT NO : 151065.101
DRAWN BY : Author
CHECKED BY : Checker
COPYRIGHT : 2017 RIM ARCHITECTS
CORPORATE NO. AECL 1227

DWG NO:
A501