



CONSTRUCTION DOCUMENTS

**JAA ANSEP ULA RENOVATION
UNIVERSITY LAKE BUILDING -
BUILDING AO 107
UNIVERSITY OF ALASKA ANCHORAGE
REFLECTED CEILING PLAN - BASE BID**

PROJECT TITLE:
ADDRESS:
OWNER:
SHEET TITLE:

| NO | DESCRIPTION | DATE |
|----|-------------|------|
| | | |
| | | |
| | | |
| | | |
| | | |
| | | |
| | | |
| | | |
| | | |

DATE : 2017.04.07
PROJECT NO : 151065.101
DRAWN BY : NAME
CHECKED BY : NAME
COPYRIGHT : 2017 RIM ARCHITECTS

CORPORATE NO. AECL 1227

DWG NO:

A120

RCP LEGEND

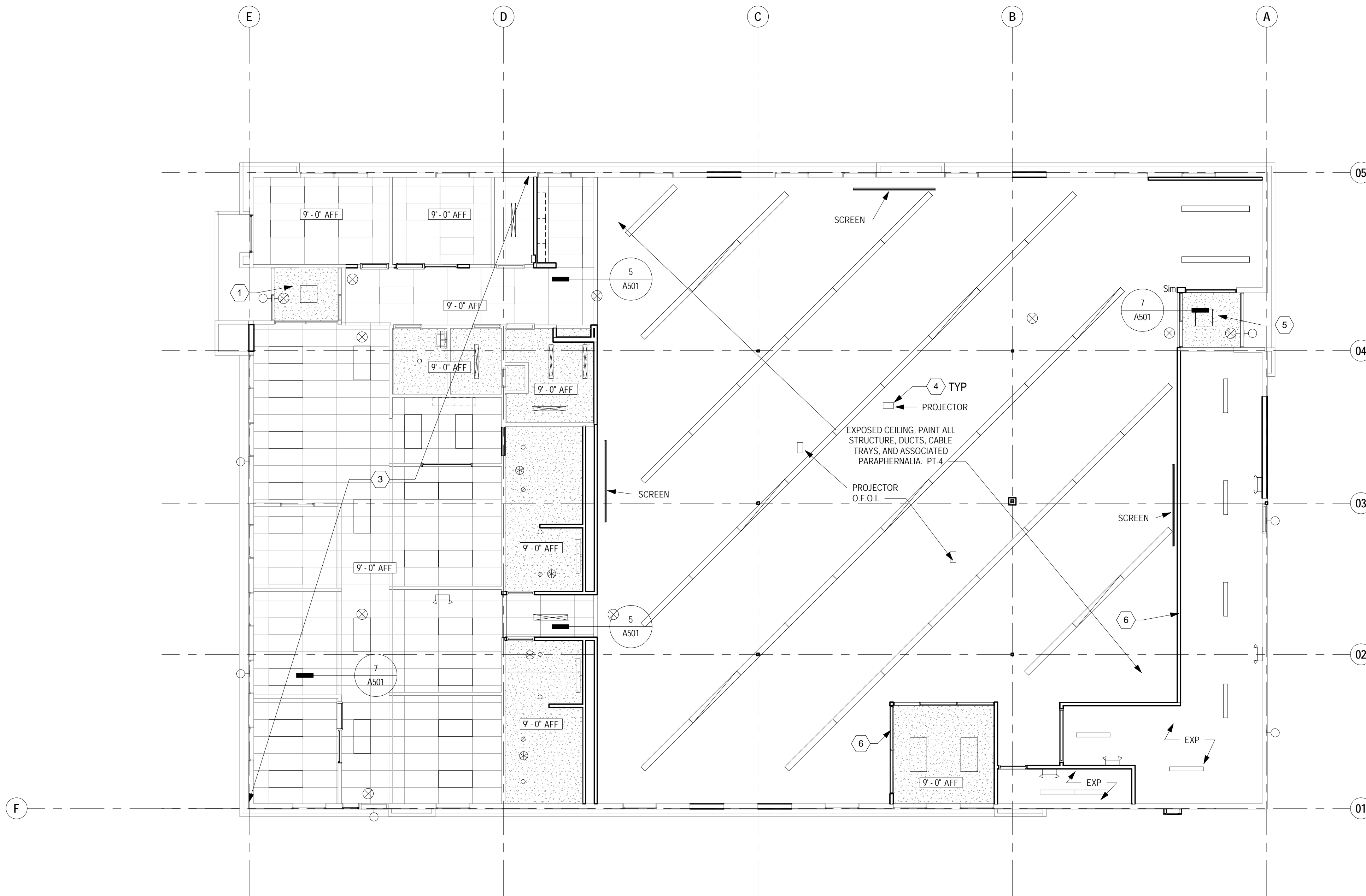
- GWB
- EXPOSED TO STRUCTURE
- 2 X 4 ACP AND GRID
- CEILING HEIGHT AS NOTED
- WALL TO CONTINUE TO DECK ABOVE
- RECESSED DOWN LIGHT - SEE ELECTRICAL DRAWINGS BY OTHERS
- 2 X 4 LIGHT FIXTURE - SEE ELECTRICAL DRAWINGS BY OTHERS
- WALL MOUNT FIXTURE - SEE ELECTRICAL DRAWINGS BY OTHERS
- SURFACE MOUNTED LINEAR FIXTURE - SEE ELECTRICAL DRAWINGS BY OTHERS
- PENDANT MOUNTED LINEAR FIXTURE - SEE ELECTRICAL DRAWINGS BY OTHERS

RCP GENERAL NOTES

- FIELD VERIFICATION: CONTRACTOR SHALL FIELD VERIFY ALL DIMENSIONS AND VERTICAL CONTROL PRIOR TO THE COMMENCEMENT OF WORK. PROMPTLY NOTIFY THE OWNER'S REPRESENTATIVE OR CONTRACTING OFFICER IN WRITING OF ANY DISCREPANCIES IN NEW AND/OR EXISTING CONDITIONS. CONTRACTOR IS RESPONSIBLE FOR COORDINATION OF ALL ABOVE CEILING WORK TO ENSURE CLEARANCES FOR SCHEDULED CEILING HEIGHTS.
- DIMENSION GUIDE: ALL DIMENSIONS ARE TAKEN TO/FROM GRID LINE, FACE OF CONCRETE AND MASONRY, AND FACE OF METAL/WOOD STUD PARTITION, UNLESS OTHERWISE NOTED. CLEAR DIMENSIONS WILL BE NOTED WHERE APPLICABLE FROM MATERIAL FINISHES.
- CEILING HEIGHTS: ALL CEILING DESIGNATIONS ON THIS PLAN SHALL BE 9'-0" ABOVE THE FINISH FLOOR, UNLESS OTHERWISE NOTED ON THE PLAN.
- CEILING DEVICES: ALL CEILING LAYOUT PLANS SHOW MOST MAJOR MECHANICAL AND ELECTRICAL DEVICES. SEE MECHANICAL AND ELECTRICAL DOCUMENTS FOR ADDITIONAL M/E DEVICES INCLUDED IN THE CEILING CONFIGURATION. CONTRACTOR TO COORDINATE LAYOUT OF ALL DEVICES. ALL M/E DEVICES SCHEDULED FOR SUSPENDED ACOUSTIC CEILING PANEL (ACP), OR ACOUSTIC CEILING TILES (ACT) TO BE LOCATED IN THE CENTER OF EACH PANEL/TILE, UNLESS OTHERWISE NOTED.
- PARTITION TYPES: PARTITION TYPES AND RELATED HEIGHTS ARE REFERENCED ON THE CORRESPONDING FLOOR PLANS (SHEET NO.) FOR THIS AREA, AND SCHEDULED ON SHEET (SHEET NO.)
- CEILING ACCESS: PROVIDE CEILING ACCESS PANELS, AS SPECIFIED IN SECTION 083100 IN ALL INACCESSIBLE CEILING WHERE EQUIPMENT/DEVICES REQUIRING ACCESS ARE LOCATED. COORDINATE LOCATION WITH EXISTING DESIGN LAYOUT, WITH SIZE AS SPECIFIED. NOTE: TO BE CONSISTENT WITH TYPE OF ACCESS PANELS. INSTRUCT M/E TO SPECIFY (CROSS-REFERENCE) THE ARCH SECTION.
- SPRINKLER HEADS: ALL SPRINKLER HEADS SCHEDULED FOR SUSPENDED ACOUSTIC CEILING PANEL (ACP), OR ACOUSTIC CEILING TILES (ACT) TO BE LOCATED IN THE CENTER OF EACH PANEL/TILE.
- LATERAL SUPPORT: PROVIDE LATERAL SUPPORT AND UPLIFT RESTRAINT AT ALL SUSPENDED ACOUSTICAL PANEL/TILE CEILING AS REQUIRED BY THE LOCAL JURISDICTION (ASTM). COORDINATE LOCATIONS WITH ABOVE CEILING DEVICES AND RELATED CLEARANCES.
- COORDINATE SPEAKERS, MICROPHONE, AND SOUND SYSTEM WITH AV EQUIPMENT, ELECTRICAL, MECHANICAL, AND ALL ADDITIONAL EQUIPMENT
- COORDINATE ALL FIXTURES IN CLASSROOM 104 WITH PROJECTORS, SCREENS, AND AV SYSTEM. LIGHT FIXTURES TO BE INSTALLED AT 10'-0" AFF.

KEY NOTE LEGEND

- AS INDICATED BY:
- EXISTING GYPSUM BOARD CEILING AT VESTIBULE TO REMAIN.
 - EXISTING LAY-IN TILE, GRID AND LIGHT FIXTURES.
 - CEILING GRID, TILE, & EQUIPMENT, REFER TO D120 AND D121 FOR ADDITIONAL INFORMATION
 - COORDINATE DISTANCE BETWEEN SCREEN AND PROJECTOR
 - NEW GYPSUM BOARD CEILING AT VESTIBULE
 - PROVIDE DEFLECTION TRACK AT FULL HEIGHT WALLS WHERE REQUIRED. REFER TO DETAIL 8/A501



1 CEILING PLAN- FIRST FLOOR - BASE BID
A120 1/8" = 1'-0"

