

CONSTRUCTION DOCUMENTS

UAA ANSEP ULA RENOVATION  
UNIVERSITY LAKE BUILDING -  
BUILDING AO 107  
UNIVERSITY OF ALASKA ANCHORAGE  
FLOOR PLAN - ALTERNATE 1

PROJECT TITLE:  
ADDRESS:  
OWNER:  
SHEET TITLE:

NO	DESCRIPTION	DATE

DATE : 2017.04.07  
PROJECT NO : 151065.101  
DRAWN BY : Author  
CHECKED BY : Checker  
COPYRIGHT : 2017 RIM ARCHITECTS

CORPORATE NO. AECL 1227

DWG NO:

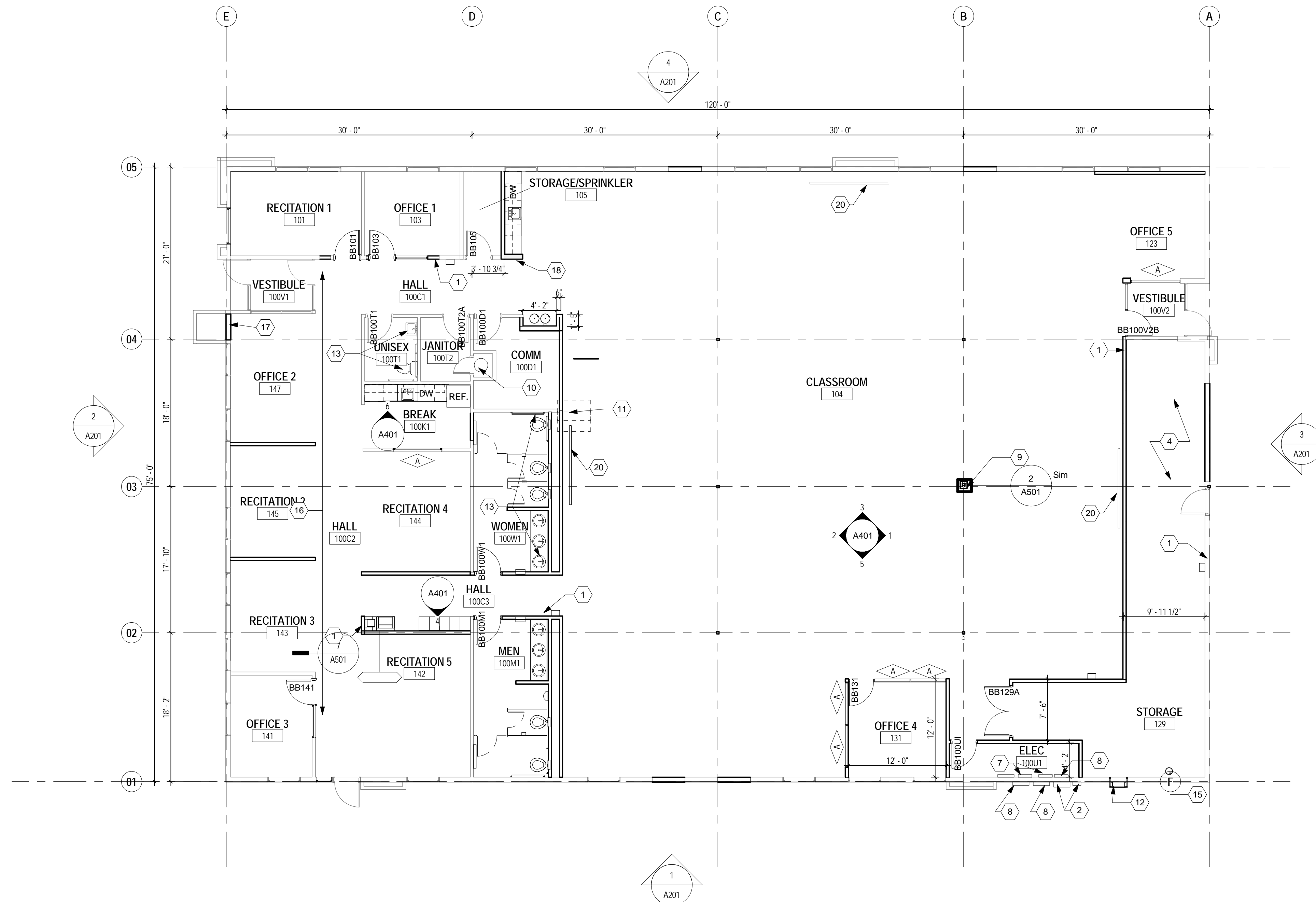
**A102**

FLOOR PLAN GENERAL NOTES

- REFER TO SHEET G001 FOR GENERAL PROJECT NOTES
- REFER TO SHEET G002 FOR ADDITIONAL LIFE SAFETY GENERAL NOTES
- DIMENSIONING GUIDE: ALL DIMENSIONS ARE TAKEN TO/FROM GRID LINE, FACE OF CONCRETE AND MASONRY, AND FACE OF METALWOOD STUD PARTITION, (OR ANY OTHER REFERENCE POINT), UNLESS OTHERWISE NOTED. CLEAR DIMENSIONS BETWEEN SURFACES WILL BE NOTED WHERE APPLICABLE FROM MATERIAL FINISHES. ALL DIMENSIONS REFERENCED HEREIN ARE IMPERIAL STANDARDS, UNLESS OTHERWISE NOTED. FOR THE PURPOSE OF THIS PROJECT, ALL DIMENSIONS HEREIN SHALL BE TREATED EQUALLY, WITHOUT ANY HIERARCHY, AND/OR ORDER OF PRECEDENCE, UNLESS OTHERWISE NOTED
- DEMOLITION NOTES: REFERENCE CORRESPONDING DEMOLITION SHEETS FOR CROSS-REFERENCING TO THE SAME FLOOR PLAN. CONTRACTOR TO VERIFY ALL NEW AND EXISTING CONDITIONS AND NOTIFY OWNER OF ANY DEVIATIONS.
- PARTITION/WALL TYPES: ANY PARTITION NOT TAGGED WITH PARTITION/WALL TYPE BUG ON THE FLOOR PLAN SHALL BE CLASSIFIED WALL TYPE [XX], AS DESIGNATED ON THE PARTITION/WALL TYPE SCHEDULE [SHEET NO.], UNLESS OTHERWISE NOTED. ALL INTERIOR PARTITIONS SHOWN IN PLAN ARE CLASSIFIED AS WALL TYPE [XX], AS DESIGNATED ON THE PARTITION/WALL TYPE SCHEDULE [SHEET NO.] FULL-HEIGHT, UNLESS OTHERWISE NOTED.
- DOOR OPENINGS: ALL DOOR OPENINGS ARE DESIGNATED WITH REFERENCE NUMBERS CORRESPONDING TO A SEPARATE DOOR SCHEDULE. REFER TO SHEET A601 FOR THE DOOR OPENING SCHEDULE.
- WINDOW OPENINGS: ALL WINDOW OPENINGS ARE DESIGNATED WITH REFERENCE NUMBERS CORRESPONDING TO SEPARATE WINDOW SCHEDULE. THIS MAY INCLUDE MISCELLANEOUS OPENINGS SUCH AS STOREFRONT, AND CURTAIN WALL ASSEMBLIES. REFER TO SHEET A601 FOR THE WINDOW OPENING SCHEDULE.
- ROOM FINISHES: ALL ROOMS ARE DESIGNATED WITH REFERENCE ROOM NAMES/NUMBERS CORRESPONDING TO A SEPARATE ROOM FINISH SCHEDULE. REFER TO SHEET SERIES [SHEET NO.] FOR THE ROOM FINISH SCHEDULE. NOTE: ADDITIONAL REFERENCES TO FLOOR FINISH/LAYOUT PLANS COULD BE INCLUDED.
- REFLECTED CEILING PLAN: REFER TO SHEET A120 FOR THE CORRESPONDING RCP FOR THIS AREA.
- EQUIPMENT PLANS: ROOMS MAY BE FURNISHED WITH SPECIFIC EQUIPMENT REQUIRED BY THE CONTRACT. REFER TO THE SHEET SERIES I100 FOR THE EQUIPMENT LAYOUT PLANS AND ADDITIONAL EQUIPMENT DATA. NOTE: EQUIPMENT COULD BE DESIGNATED FF&E, COLLATERAL, OR OTHER.
- MOUNTING HEIGHTS: REFER TO SHEET G003 FOR TYPICAL MOUNTING HEIGHTS FOR FIXTURES, ACCESSORY ITEMS, AND MISCELLANEOUS DEVICES.
- FLOOR SLOPE: IN RESTROOM/TOILET AREAS, KITCHENS, AND OTHER AREAS TO RECEIVE FLOOR DRAINS, SLOPE THE FLOOR TO THE DRAIN, UNLESS OTHERWISE INDICATED.
- EXTERIOR UTILITY DISCONNECTS, METER AND CT CAN TO REMAIN- SEE ELECTRICAL DRAWINGS
- EXISTING MIL&AP UTILITY TRANSFORMER TO REMAIN.
- CONCRETE FLOOR SLAB TO REMAIN.
- PATCH AND REPAIR GWB AFTER INSTALLATION OF HOLDOWNS AND NEW OUTLETS
- PATCH AND REPAIR WALL FOR F.D.C. INSTALLATION
- FIRE ALARM CONTROL PANEL
- PROVIDE CORNER STAINLESS STEEL CORNER GUARDS TO CLASSROOM COLUMNS
- PROVIDE LEVEL 5 FINISH AT ALL EXISTING GWB PARTITIONS.

KEY NOTE LEGEND

- AS INDICATED
- FIRE EXTINGUISHER AND CABINET, RE-USE EXISTING
  - EXTERIOR UTILITY DISCONNECTS, METER AND CT CAN TO REMAIN- SEE ELECTRICAL DRAWINGS
  - NOT USED
  - CONCRETE FLOOR SLAB TO REMAIN.
  - NOT USED
  - EXISTING BUILDING AUTOMATION SYSTEM (BAS) PANEL TO REMAIN, RELOCATE AS NEEDED. SEE ELECTRICAL
  - REPLACE EXISTING ELECTRICAL PANEL. SEE ELECTRICAL FOR LOCATION
  - EXISTING PANEL TO REMAIN
  - EXISTING RAIN LEADER TO REMAIN
  - EXISTING WATER HEATER TO REMAIN
  - EXTEND EXISTING PARTIAL HEIGHT WALL TO BOTTOM OF DECK
  - ROOF ACCESS LADDER TO REMAIN
  - NEW PLUMBING FIXTURES, REFER TO MECHANICAL
  - WALL FURRING, SEE ELECTRICAL
  - 6" RAIN LEADER. SEE M101
  - PROVIDE LEVEL 5 FINISH AT ALL EXISTING GWB PARTITIONS.



**1 FLOOR PLAN ALTERNATE 1**  
A102 1/8" = 1'-0"



**ALTERNATE 2**

PROVIDE ALUMINUM STOREFRONT WITH FULL LIGHT SWINGING DOORS THE FULL LENGTH OF RECITATION ROOMS 2,3,4 AND 5 AND THE FULL LENGTH OF OFFICE 2.