

DEMO RCP GENERAL NOTES





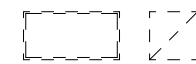


1. PATCH, MATCH AND REPAIR EXISTING FINISHES AND CONSTRUCTION AS REQUIRED FOR INSTALLATION OF NEW WORK. TYPICAL.
2. REFERENCE HAZMAT DOCUMENTS FOR ABATEMENT WORK TO BE PERFORMED PRIOR TO DEMOLITION WORK. COORDINATE ALL DEMOLITION WORK WITH HAZARDOUS MATERIAL DOCUMENTS. SEE HATCHED AREAS FOR FLOOR TILES CONTAINING ASBESTOS.
3. CONTRACTOR TO COORDINATE EXACT TYPE AND NUMBERS OF LIGHT FIXTURES TO BE RELOCATED AND REUSED. REFER TO ELECTRICAL.
4. REFER TO ELECTRICAL AND MECHANICAL DRAWINGS FOR ADDITIONAL INFORMATION.

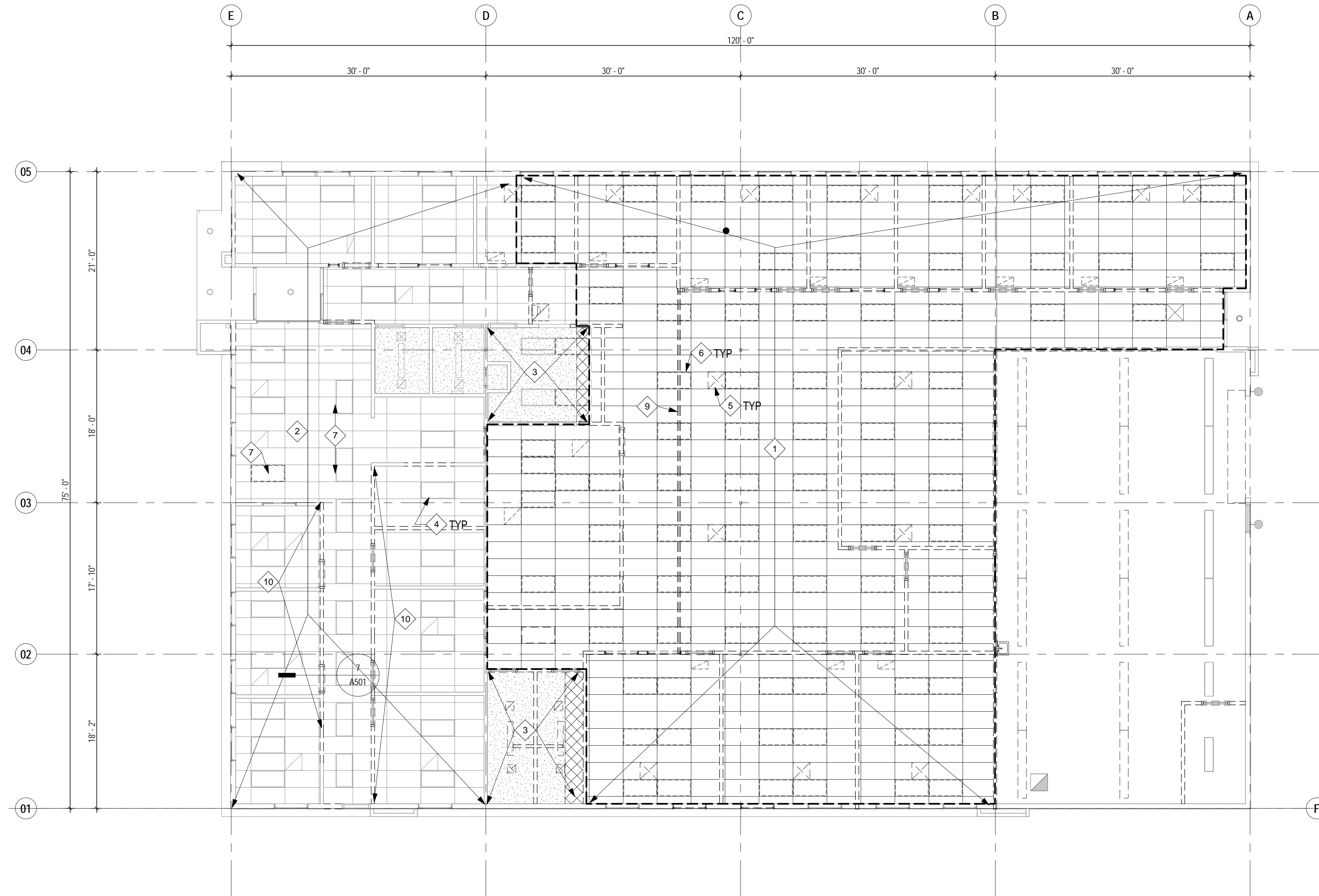
KEY NOTE LEGEND

AS INDICATED BY: 

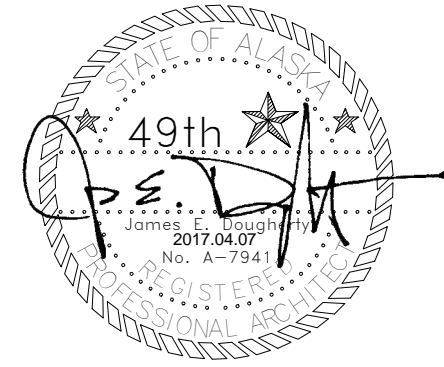
1. DEMOLISH SUSPENDED CEILING GRID, ACOUSTICAL TILES, AND ASSOCIATED APPURTENANCES.
2. CEILING TILE TO REMAIN, MAINTAIN IN PLACE CEILING GRID. REFER TO ELECTRICAL AND MECHANICAL DOCUMENTS FOR LIGHTING FIXTURES, AND DIFFUSERS. EXISTING AND NEW CEILING GRID INSTALLATION TO CONFORM TO CURRENT CODE STANDARDS. CONTRACTOR OPTION TO ADD NEW GRID AND CEILING TILES PER SPECIFICATIONS.
3. REMOVE EXISTING GYPSUM CEILING. CONTRACTORS OPTION TO PATCH AND REPAIR.
4. EXISTING LIGHT FIXTURES TO REMAIN.
5. DEMOLISH MECHANICAL DIFFUSERS. SEE MECHANICAL DRAWINGS.
6. DEMOLISH LIGHT FIXTURE. SEE ELECTRICAL DRAWINGS.
7. REMOVE LIGHT FIXTURE, REFER TO A120 REFLECTED CEILING PLAN AND ELECTRICAL DRAWINGS FOR NEW LOCATION.
8. REMOVE DIFFUSER. REFER TO A120 REFLECTED CEILING PLAN AND MECHANICAL DRAWING FOR NEW LOCATION.
9. DEMOLISH DRAFT STOP WALL FROM BOTTOM OF DECK TO TOP OF CEILING.
10. DEMOLISH WALL TO 8' AFF. MAINTAIN EXISTING STUD AND GYPSUM FOR NEW 8'-0" BULKHEAD.

LEGEND

-  PARTITION AND DOOR TO REMAIN
-  PARTITION AND DOOR TO BE DEMOLISHED
-  WINDOW TO BE DEMOLISHED
-  ELECTRICAL / MECHANICAL FIXTURE TO REMAIN
-  DEMOLISH ELECTRICAL / MECHANICAL FIXTURE
-  SUSPENDED CEILING SYSTEM TO BE DEMOLISHED
-  GYPSUM CEILING TO BE DEMOLISHED



1 DEMO CEILING PLAN- FIRST FLOOR - BASE BID
D120 1/8" = 1'-0"



CONSTRUCTION DOCUMENTS

UAA ANSEP ULA RENOVATION
UNIVERSITY LAKE BUILDING -
BUILDING AO 107
UNIVERSITY OF ALASKA ANCHORAGE
DEMO CEILING PLAN - BASE BID

PROJECT TITLE:
ADDRESS:
OWNER:
SHEET TITLE:

NO	DESCRIPTION	DATE

DATE : 2017.04.07
PROJECT NO : 151065.101
DRAWN BY : Author
CHECKED BY : Checker
COPYRIGHT : 2017 RIM ARCHITECTS

CORPORATE NO. AECL 1227

DWG NO:

D120