

# COMMUNITY BUILDING GENERATOR INSTALLATION

STATE OF ALASKA  
DEPARTMENT OF ADMINISTRATION  
Division of General Services  
Facilities Section

PO Box 11210  
Juneau, AK 99811-0210  
Brent Fagerstrom, Project Manager  
(907) 465-6877

ARCHITECT

NorthWind Architects, LLC  
126 Seward Street  
Juneau, AK 99801  
(907) 586-6150  
Sean Bolly, AIA, Principal Architect

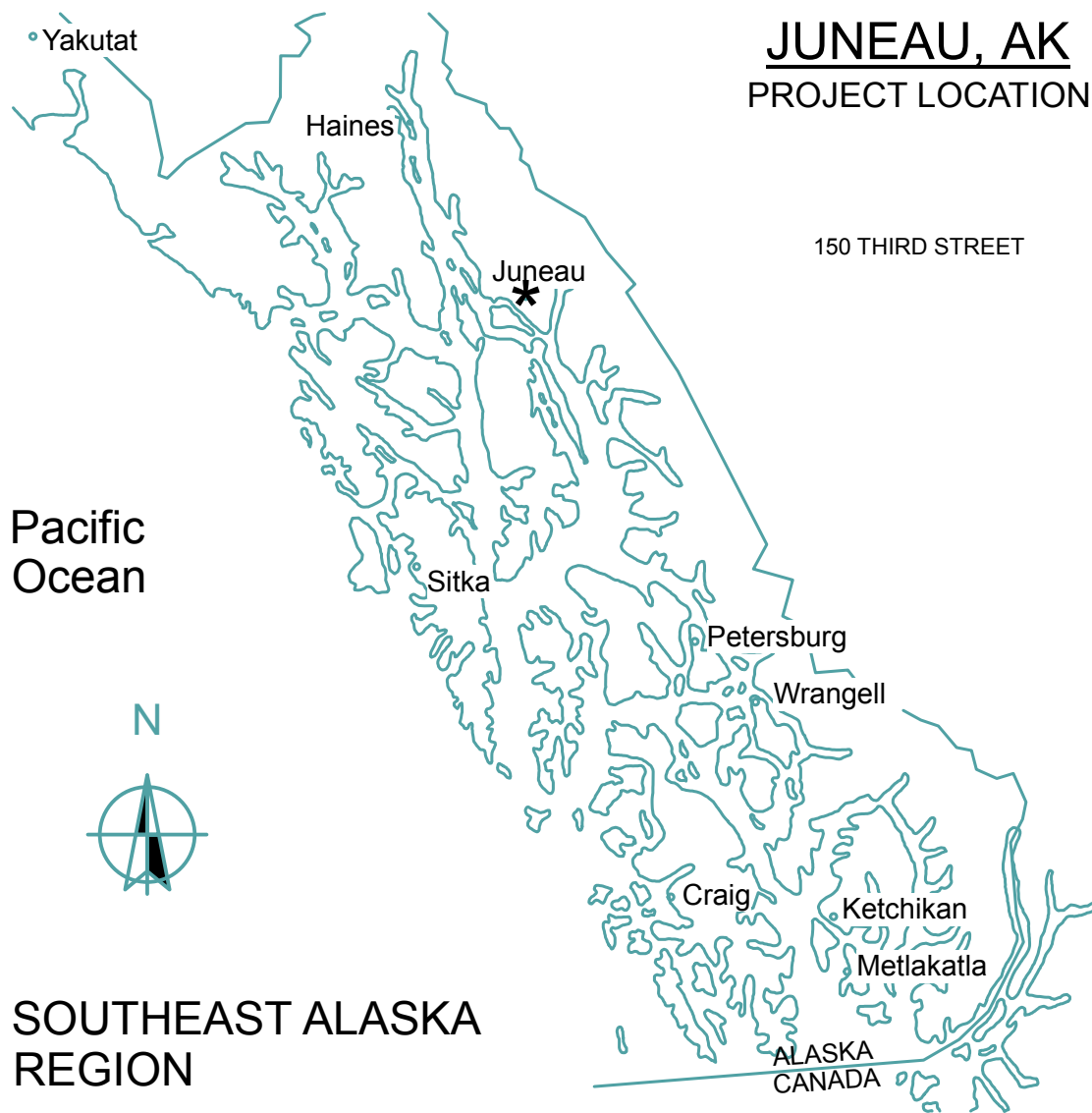
ELECTRICAL ENGINEER

Haight & Associates, Inc.  
526 Main Street  
Juneau, AK 99801  
(907) 586-9788  
Ben Haight, E.E., Principal

CIVIL ENGINEER

PDC, Inc.  
6205 Glacier Highway  
Juneau, AK 99801  
(907) 780-6060  
Mark Pusich, P.E. Principal

LOCATION MAP



APPLICABLE CODES

INTERNATIONAL BUILDING CODE 2009 EDITION (I.B.C.)  
INTERNATIONAL EXISTING BUILDING CODE 2009 EDITION (I.B.C.)  
ALL CODES REFERENCED ARE TO BE USED AS AMENDED BY THE STATE OF ALASKA AND THE CITY AND BOROUGH OF JUNEAU.

SCOPE OF WORK SUMMARY

THE COMMUNITY BUILDING IS A DOWNTOWN JUNEAU OFFICE BUILDING COMPRISED OF THREE FLOORS AND A BASEMENT. THE BUILDING IS NATURALLY VENTILATED AND IS HEATED WITH AN OIL-FIRED BOILER LOCATED IN THE BASEMENT. PRIMARY ELECTRICAL DISTRIBUTION IS ALSO FROM THE BASEMENT.

THE GENERATOR INSTALLATION SHALL TIE INTO THE EXISTING ELECTRICAL PANELS IN THE BASEMENT, AND AND SHALL INCLUDE ANY NECESSARY CABLING, CONDUIT, CIVIL AND FINISH WORK REQUIRED TO COMPLETE THE INSTALLATION.

CEILINGS AT BASEMENT MAY NEED TO BE REMOVED AND REINSTALLED AS A PART OF THE WORK. EXTERIOR CONCRETE EXPOSED TO VIEW DURING INSTALLATION THAT IS TO REMAIN EXPOSED TO VIEW SHALL BE CLEANED FAIRED, AND PAINTED TO MATCH BUILDING COLOR.

THE CONSTRUCTION SHALL BE COMPLETED IN A SINGLE CONSTRUCTION PHASE AND COORDINATED W/OWNERS ONGOING USE OF THE BUILDING.

HAZARDOUS MATERIALS NOTES

**Community Building basement has had all asbestos above the suspended ceiling removed and the above-ceiling space is clean.**

**All original GWB walls in the building are Asbestos Containing Materials (ACMs). Thus, all penetrations in walls and ceilings will need to be done by certified people using appropriate methods. Likewise, all cuts in existing walls and ceilings (for removal of existing electrical), must be done by certified workers.**

SHEET INDEX

GENERAL

G0.1 TITLE SHEET / GENERAL INFO

ARCHITECTURAL

A2.0 BASEMENT AND GENERATOR

CIVIL

C1.0 EXISTING SITE CONDITIONS  
C2.0 SITE PLAN  
C3.0 SECTIONS AND DETAILS  
C4.0 SITE SECTION

ELECTRICAL

E0.1 LEGEND, SCHEDULE, DETAIL  
E1.0 SITE PLAN - EXISTING  
E1.1 BASEMENT FLOOR PLAN - EXISTING  
E2.0 SITE PLAN - NEW  
E2.1 BASEMENT FLOOR PLAN NEW  
E2.2 SINGLE LINE DIAGRAM

MARCH 29, 2017

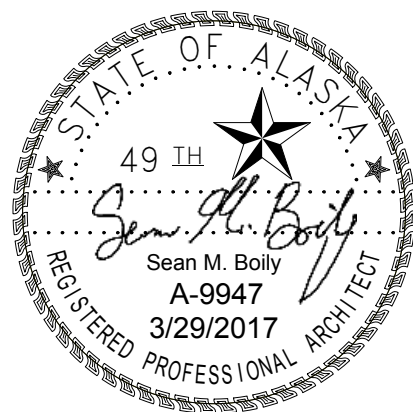
ADDENDUM NUMBER

ATTACHMENT NUMBER

RECORD OF REVISIONS

No.	DATE	DESCRIPTION

STATE OF ALASKA  
DEPARTMENT OF ADMINISTRATION  
Division of General Services  
Facilities Section  
PO Box 11210  
Juneau, AK 99811-0210  
COMMUNITY BUILDING  
GENERATOR INSTALLATION



NorthWind Architects, LLC  
www.NorthWindArch.com  
126 Seward Street  
Juneau, AK, 99801

1" ACTUAL

IF THE ABOVE DIMENSION DOES NOT MEASURE ONE INCH (1") EXACTLY, THIS DRAWING WILL HAVE BEEN ENLARGED OR REDUCED, AFFECTING ALL LABELED SCALES.

DRAWN BY: SB

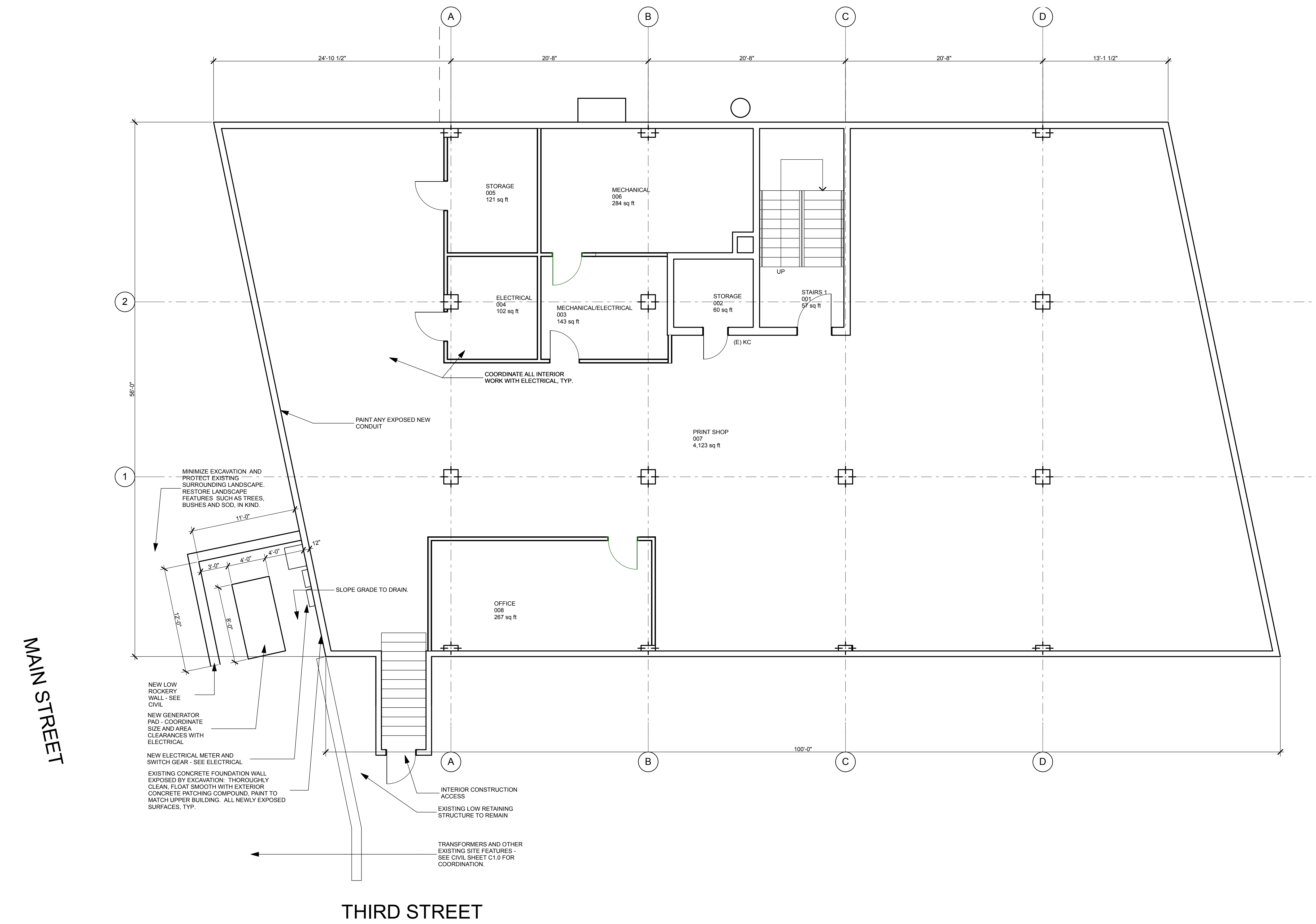
G0.1

TITLE SHEET /  
GENERAL INFO

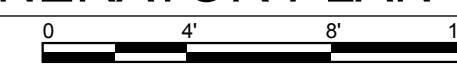
PROJECT DESIGNATION NUMBER

2017-0222-3524

STATE	YEAR
ALASKA	2017



1 BASEMENT AND GENERATOR PLAN  
SCALE: 3/16" = 1'-0"

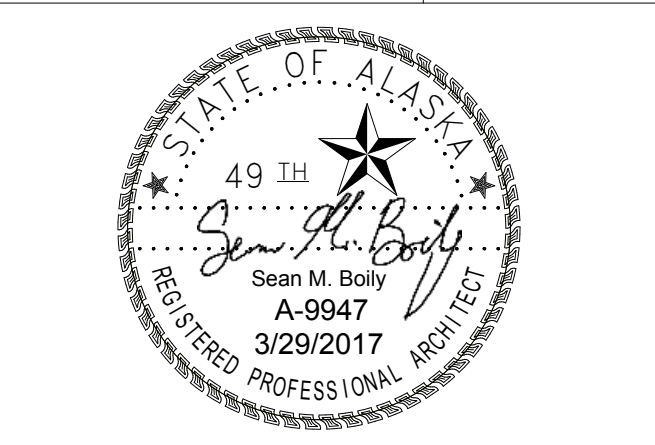


MARCH 29, 2017		
ADDENDUM NUMBER		
ATTACHMENT NUMBER		
RECORD OF REVISIONS		
No.	DATE	DESCRIPTION

STATE OF ALASKA  
DEPARTMENT OF ADMINISTRATION

Division of General Services  
Facilities Section  
PO Box 11210  
Juneau, AK 99811-0210

COMMUNITY BUILDING  
GENERATOR INSTALLATION



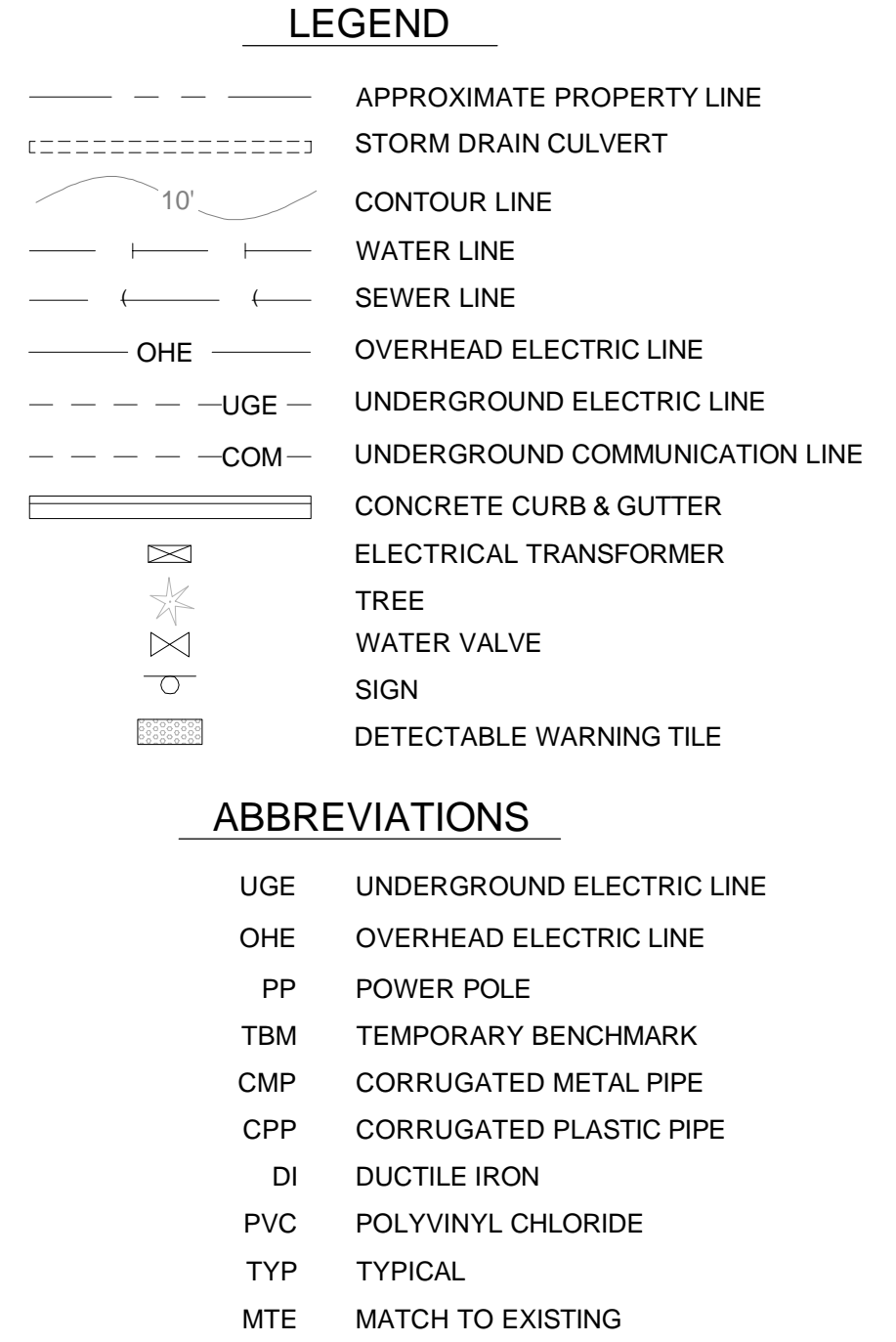
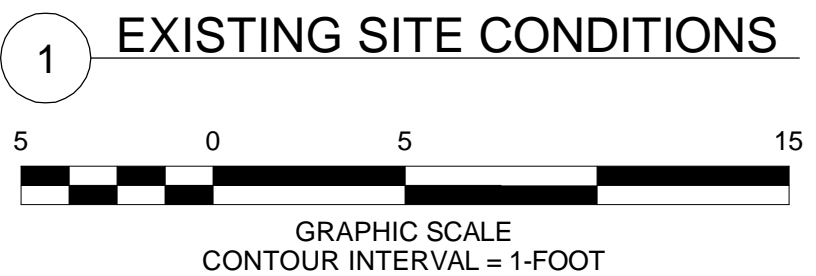
NorthWind Architects, LLC  
www.NorthWindArch.com  
126 Seward Street  
Juneau, AK, 99801

IF THE ABOVE DIMENSION DOES NOT MEASURE ONE INCH (1") EXACTLY, THIS DRAWING WILL HAVE BEEN ENLARGED OR REDUCED, AFFECTING ALL LABELED SCALES.

DRAWN BY: SB	
A2.0	
BASEMENT AND GENERATOR	
PROJECT DESIGNATION NUMBER	
2017-0222-3524	
STATE	YEAR
ALASKA	2017

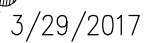


1. THE FIELD WORK WAS PERFORMED ON MARCH 3rd, 2017 AS AUTHORIZED BY NORTHWIND ARCHITECTS.
2. AT THE TIME OF SURVEY THE GROUND SURFACE WAS COVERED WITH SNOW/ICE.
3. VERTICAL CONTROL WAS AN ASSUMED ELEVATION OF 65.0' ON TOP OF EXISTING CONCRETE WALL.
4. PROPERTY LINE LOCATIONS AND UNDERGROUND UTILITY INFORMATION USED IN THESE PLANS ARE DERIVED FROM CBJ CONSTRUCTION IMPROVEMENT DRAWINGS FOR MAIN STREET IMPROVEMENTS SECOND TO FIFTH STREET.



No.	DATE	DESCRIPTION

# COMMUNITY BUILDING GENERATOR INSTALLATION

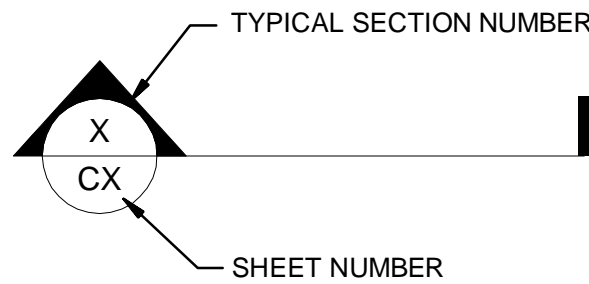


IF THE ABOVE DIMENSION DOES NOT MEASURE ONE INCH (1") EXACTLY, THIS DRAWING WILL HAVE BEEN ENLARGED OR REDUCED, AFFECTING ALL LABELED SCALES.

STATE	YEAR
ALASKA	2017

GENERAL NOTES

1. PROTECT AND MAINTAIN
2. TAPER ROCK WALL TO MATCH ADJACENT SLOPE. TOP SOIL AND SEED ALL DISTURBED AREAS.



REFERENCE  
BUBBLE EXPLANATION

N.T.S.

DIAL BEFORE YOU DIG!  
**586-1333**  
U/G POWER, TELEPHONE & T.V.  
SHOWN ON THIS DRAWING INDICATE  
EXISTENCE ONLY AND DO NOT  
SUBSTITUTE FOR FIELD LOCATES

MARCH 29, 2017

ADDENDUM NUMBER

ATTACHMENT NUMBER

RECORD OF REVISIONS

No.	DATE	DESCRIPTION

STATE OF ALASKA  
DEPARTMENT OF ADMINISTRATION

Division of General Services  
Facilities Section  
PO Box 11210  
Juneau, AK 99811-0210

COMMUNITY BUILDING  
GENERATOR INSTALLATION



NorthWind Architects, LLC  
www.NorthWindArch.com  
126 Seward Street  
Juneau, AK, 99801  
PDC Engineers Inc.  
6205 Glacier Highway  
Juneau, Alaska, 99801

1" ACTUAL

IF THE ABOVE DIMENSION DOES NOT MEASURE ONE INCH  
(1") EXACTLY, THIS DRAWING WILL HAVE BEEN ENLARGED  
OR REDUCED, AFFECTING ALL LABELED SCALES.

DRAWN BY: ECR

C2.0

SITE PLAN

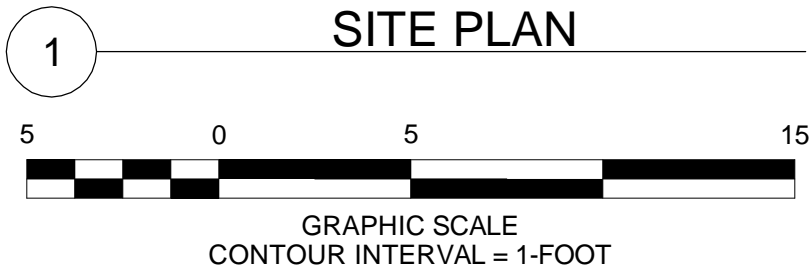
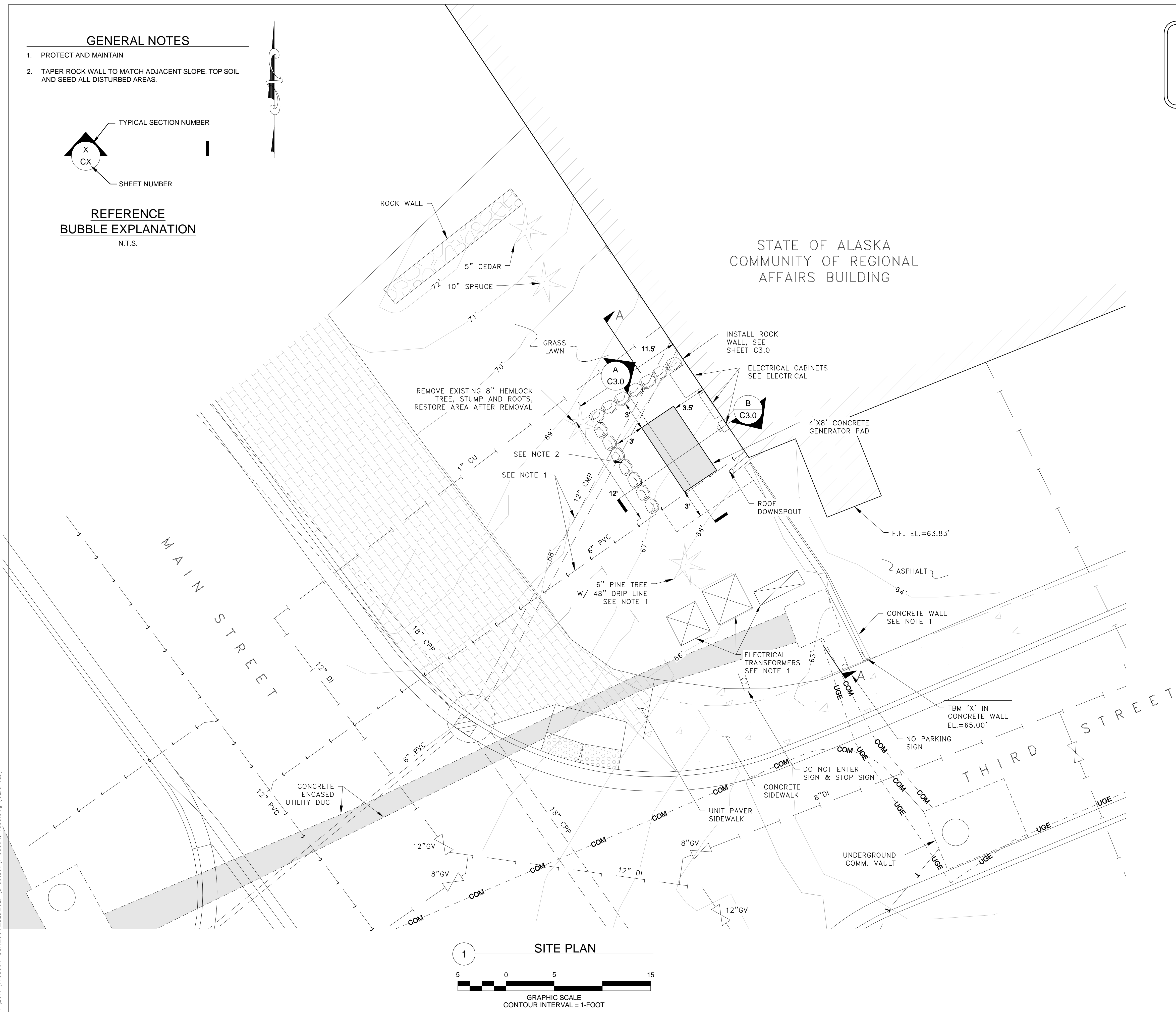
PROJECT DESIGNATION NUMBER

2017-0222-3524

STATE	YEAR
ALASKA	2017

This drawing is full size when 22" x 34" or is reduced to half size when 11" x 17"

STATE OF ALASKA  
COMMUNITY OF REGIONAL  
AFFAIRS BUILDING



NWA-1148.68 Community Building Generator

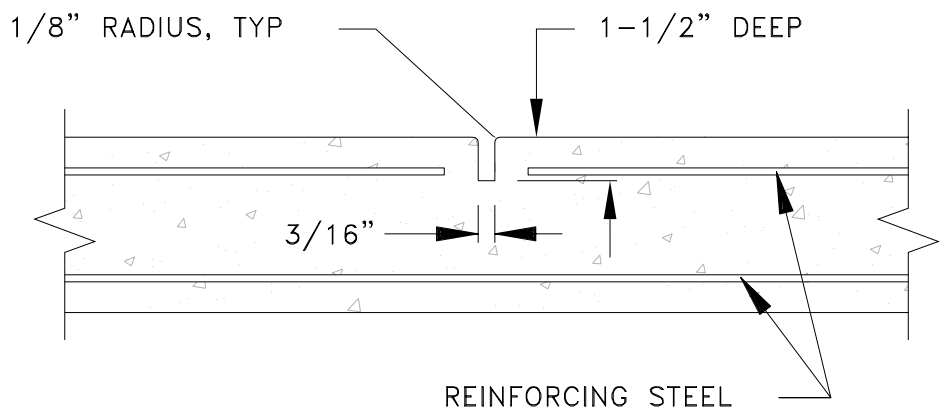
Mar 28, 2017 -- 4:25pm  
P:\2017\17099JN-SOA\_COM\_BLD\_GEN\SheetSet\17099JN\_Topodwg (C2.0 tab)

NOTE:  
GENERATOR SLAB DIMENSIONS PROVIDED BY  
HAIGHT & ASSOCIATES, 3-16-17.

NEW STATE OF ALASKA  
COMMUNITY OF REGIONAL  
AFFAIRS GENERATOR, SEE  
ELECTRICAL

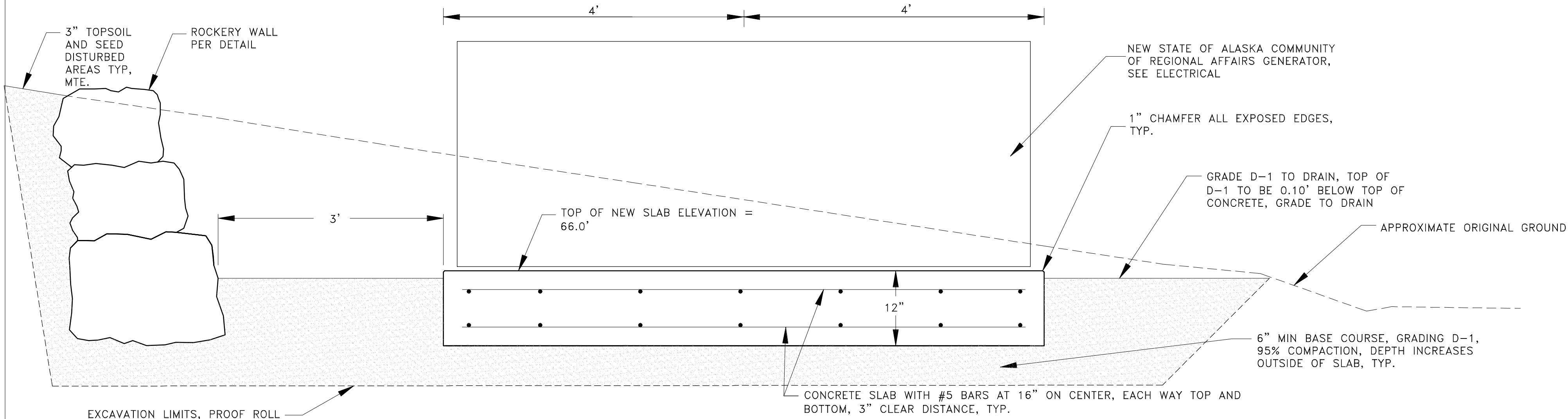
NEW CONCRETE  
SLAB PER DETAILS  
THIS SHEET

PLAN VIEW



CONTROL JOINT DETAIL

N.T.S.



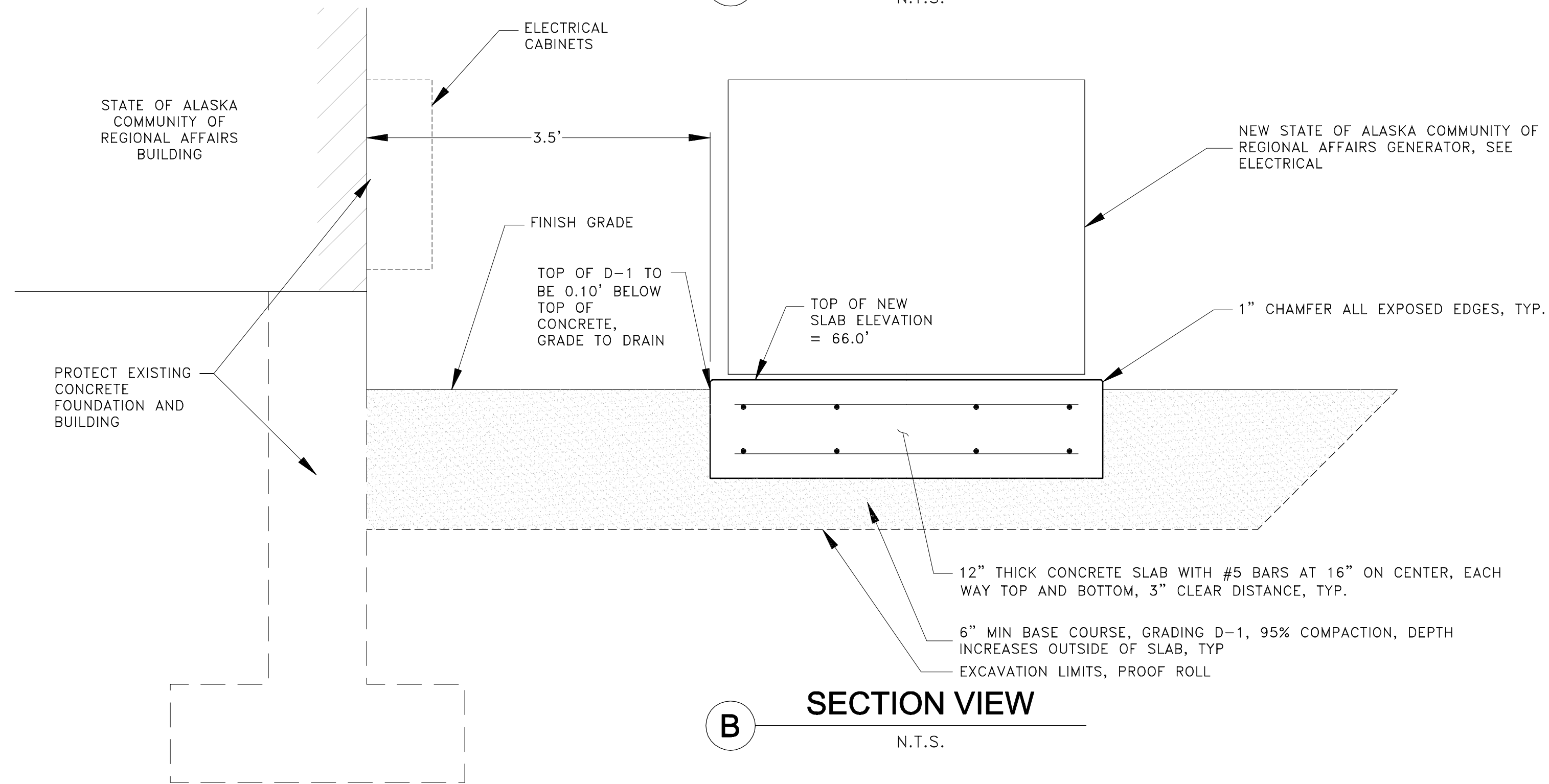
SECTION VIEW

N.T.S.

ROCKERY WALL NOTES:

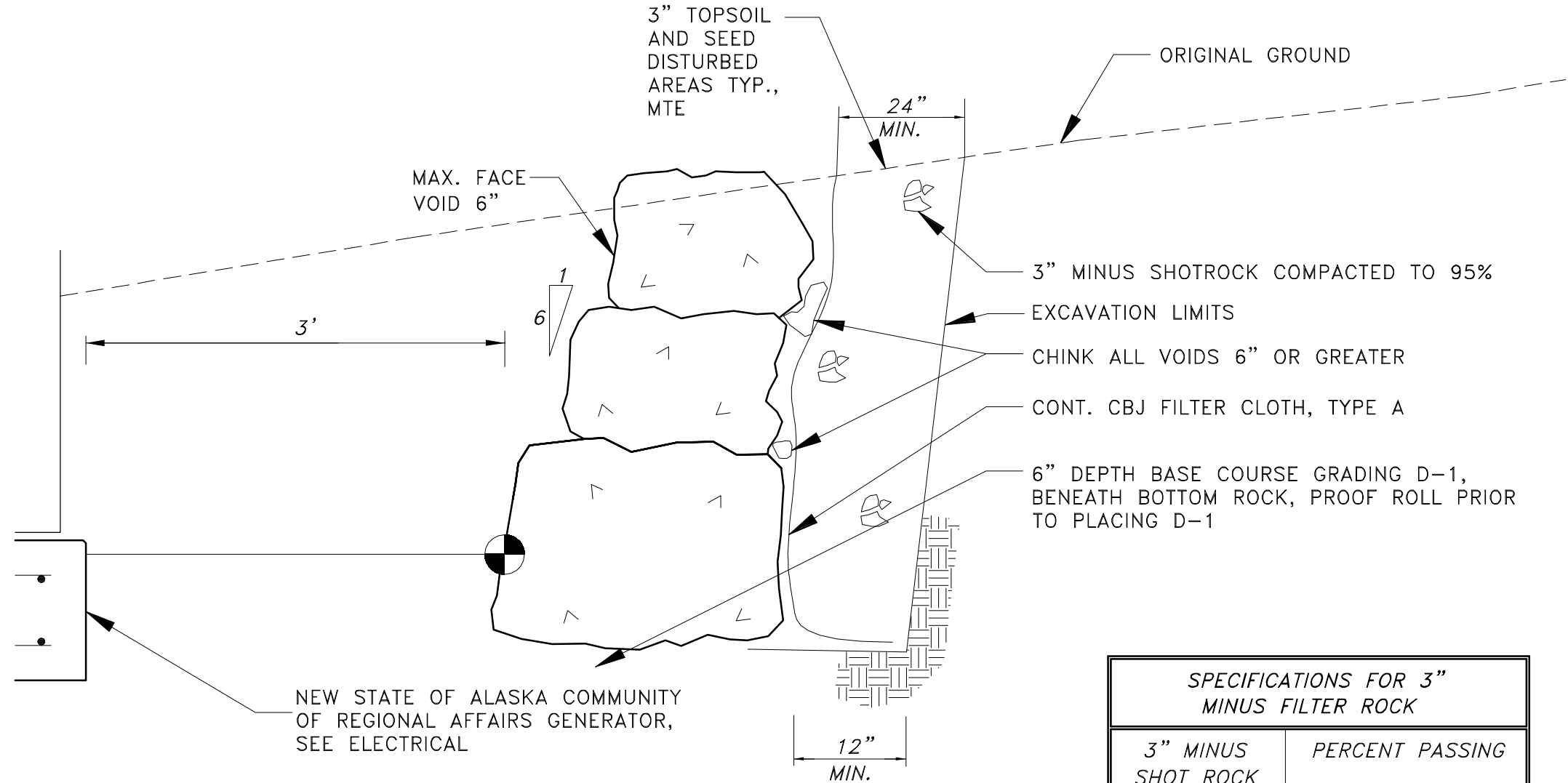
1. THE LONG DIMENSION OF THE ROCKS SHALL EXTEND INTO THE EARTH TO PROVIDE MAXIMUM STABILITY.
2. THE ROCK SHALL BE PLACED SO AS TO LOCK INTO TWO ROCKS IN THE TIER.
3. 3 MAN ROCKS 800 POUNDS MIN., 1,500 POUNDS MAX., SIZED 18" TO 24"
4. THE MINIMUM SIZE OPENINGS IN THE FILTER FABRIC SHALL BE U.S. STANDARD SIEVE NO. 100.

ROCKERIES SHALL BE CONSTRUCTED OF 3 MAN ROCKS FROM BOTTOM TO TOP.



SECTION VIEW

N.T.S.



ROCKERY WALL DETAIL

N.T.S.

SPECIFICATIONS FOR 3" MINUS FILTER ROCK	
3" MINUS SHOT ROCK	PERCENT PASSING
3"	90% TO 100%
2"	40% TO 60%
3/4"	30% TO 50%
#4	10% TO 30%
#100	0% TO 10%
#200	0% TO 5%

MARCH 29, 2017

ADDENDUM NUMBER

ATTACHMENT NUMBER

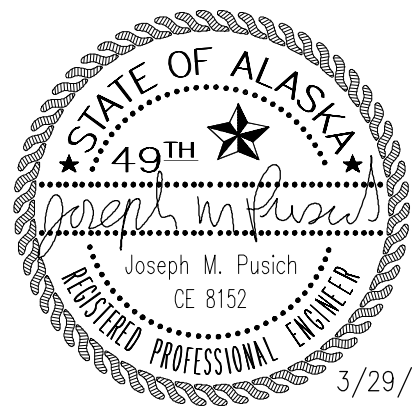
RECORD OF REVISIONS

No.	DATE	DESCRIPTION

STATE OF ALASKA  
DEPARTMENT OF ADMINISTRATION

Division of General Services  
Facilities Section  
PO Box 11210  
Juneau, AK 99811-0210

COMMUNITY BUILDING  
GENERATOR INSTALLATION



3/29/2017

NorthWind Architects, LLC  
www.NorthWindArch.com  
126 Seward Street  
Juneau, AK, 99801  
PDC Engineers Inc.  
6205 Glacier Highway  
Juneau, Alaska, 99801

1" = 1' ACTUAL  
IF THE ABOVE DIMENSION DOES NOT MEASURE ONE INCH (1") EXACTLY, THIS DRAWING WILL HAVE BEEN ENLARGED OR REDUCED, AFFECTING ALL LABELED SCALES.

DRAWN BY: ECR

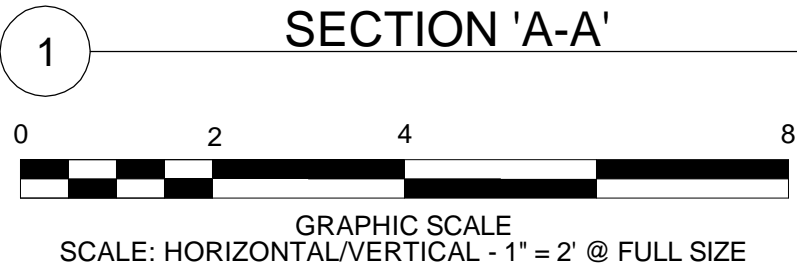
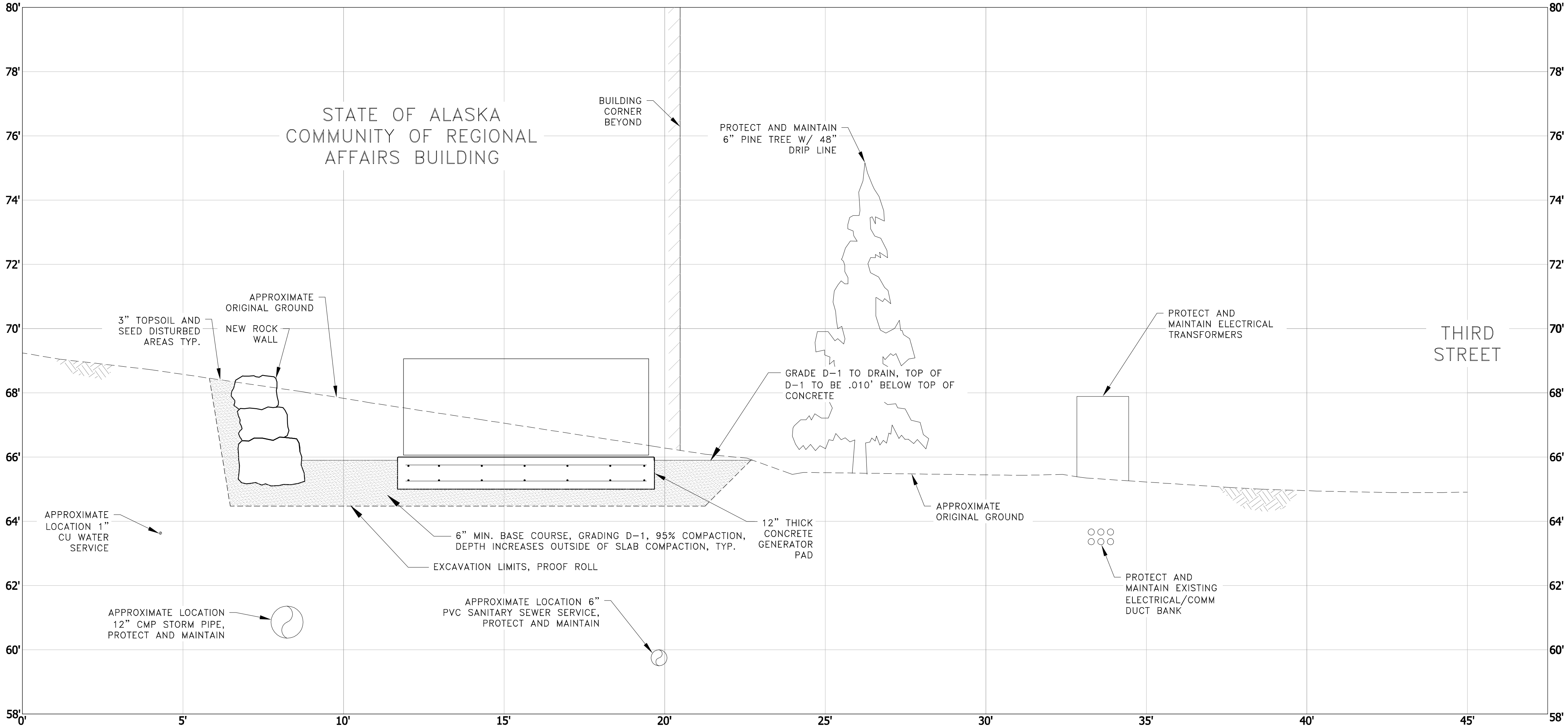
C3.0

SECTIONS AND  
DETAILS

PROJECT DESIGNATION NUMBER

2017-0222-3524

STATE	YEAR
ALASKA	2017



DIAL BEFORE YOU DIG!  
**586-1333**

U/G POWER, TELEPHONE & T.V.  
SHOWN ON THIS DRAWING INDICATE  
EXISTENCE ONLY AND DO NOT  
SUBSTITUTE FOR FIELD LOCATES

MARCH 29, 2017

ADDENDUM NUMBER

ATTACHMENT NUMBER

RECORD OF REVISIONS

No.	DATE	DESCRIPTION

STATE OF ALASKA  
DEPARTMENT OF ADMINISTRATION

Division of General Services  
Facilities Section  
PO Box 11210  
Juneau, AK 99811-0210

COMMUNITY BUILDING  
GENERATOR INSTALLATION



NorthWind Architects, LLC  
www.NorthWindArch.com  
126 Seward Street  
Juneau, AK, 99801  
PDC Engineers Inc.  
6205 Glacier Highway  
Juneau, Alaska, 99801

1" ACTUAL

IF THE ABOVE DIMENSION DOES NOT MEASURE ONE INCH  
(1") EXACTLY, THIS DRAWING WILL HAVE BEEN ENLARGED  
OR REDUCED, AFFECTING ALL LABELED SCALES.

DRAWN BY: ECR

C4.0

SITE SECTION


PROJECT DESIGNATION NUMBER

2017-0222-3524

STATE	YEAR
ALASKA	2017



Plotted 3/29/2017 11:42 AM by Kyle Dropeaux F:\PROJECTS\250 NORTHWIND ARCHITECTS\69 COMMUNITY BLDG GENERATOR\DRAWINGS\WORKING\E0.1.DWG

PANEL B			SIZE	VOLTS/PHASE			MAIN	LOCATION	MOUNT
			100 AMPS	120/240V, 1 PH			LUGS ONLY	BASEMENT	SURFACE
C K T NO	DESCRIPTION	BREAKER AMP/ POLE	KVA				BREAKER AMP/ POLE	DESCRIPTION	C K T NO
			CKT	AØ	BØ	CKT			
1	CORRIDOR	20/1	0.0	0.0		0.0	20/1	PRINT SHOP	Ø 2
3	LIGHTING	20/1	0.0		0.0	0.0	20/1	LIGHTING	4
5	BOILER ROOM	20/1	0.0	0.0		0.0	20/1	PRINT SHOP	Ø 6
7	BOILER ROOM	20/1	0.0		0.0	0.0	20/1	PHOTO ROOM	8
9	BOILER ROOM	20/1	0.0	0.0		0.0	20/1	PHOTO ROOM LIGHTING	10
11	PHOTO WALL	20/1	0.0		0.0	0.0	20/1	DARK ROOM	12
13	LIGHTING	20/1	0.0	0.0		0.0	20/1	PRINT SHOP	Ø 14
15	LIGHTING	20/1	0.0		0.7	0.7	20/1	GENERATOR	Ø 16
17	LIGHTING	20/1	0.0	0.1		0.1	20/1	GENERATOR LIGHTING	18
19	SPACE		0.0		1.2	1.2	20/1	GENERATOR — BATTERY CHARGER	20
21			0.0	0.8		0.8	15/2	GENERATOR — HEATER	22
23			0.0		0.8	0.8	--	----	24
25			0.0	0.0		0.0		SPACE	26
27			0.0		0.0	0.0			28
29			0.0	0.0		0.0			30
TOTAL CONNECTED LOAD: 3.6 KVA / 15.0 AMPS				0.9	2.7				

LEGEND

ABBREVIATIONS:

AFG	ABOVE FINISHED GRADE
ATS	AUTOMATIC TRANSFER SWITCH
EMT	ELECTRICAL METALLIC TUBING
GFI	GROUND FAULT INTERRUPTED
HDG	HOT–DIPPED GALVANIZED
PVC	POLYVINYL CHLORIDE CONDUIT
RSC	RIGID STEEL CONDUIT
UGE	UNDERGROUND ELECTRICAL
UON	UNLESS OTHERWISE NOTED
XFMR	TRANSFORMER

DIAGRAM SYMBOLS:

	AUTOMATIC TRANSFER SWITCH
	CIRCUIT BREAKER
	GENERATOR
	GROUND BUS
	GROUND ROD
	METER
	TERMINAL BLOCK
	CURRENT TRANSFORMER
	TRANSFORMER

SHEET NOTE SYMBOLS:

	EXISTING TO REMAIN
	NEW
	REMOVE EXISTING

POWER:

	CONDULET OR CONDUIT BODY
--	--------------------------

CONDUIT & CONDUCTORS:

	CONDUIT IN FLOOR OR UNDERGROUND
--	---------------------------------

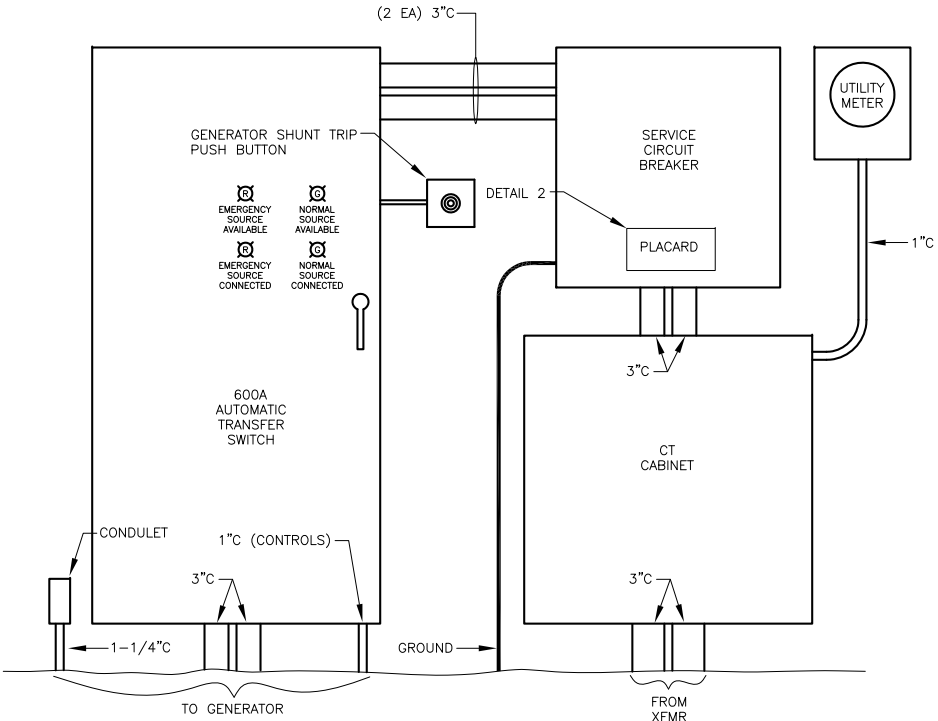
SERVICE EQUIPMENT:

	TRANSFORMER
	PANELBOARD
	MAIN DISTRIBUTION PANEL
	UTILITY METER

120–240V SERVICE DISCONNECT  
---  
208Y/120V SERVICE DISCONNECT  
LOCATED IN BASEMENT  
ELECTRICAL ROOM

2 DETAIL - PLACARD

NO SCALE



1 ELEVATION - SERVICE EQUIPMENT

NO SCALE

MARCH 29, 2017

ADDENDUM NUMBER

ATTACHMENT NUMBER

RECORD OF REVISIONS

No.	DATE	DESCRIPTION

STATE OF ALASKA  
DEPARTMENT OF ADMINISTRATION

Division of General Services  
Facilities Section  
PO Box 11210  
Juneau, AK 99811-0210

COMMUNITY BUILDING  
GENERATOR INSTALLATION



NorthWind Architects, LLC  
www.NorthWindArch.com  
126 Seward Street  
Juneau, AK, 99801

Haight & Associates, Inc.  
www.Haight-Assoc.com  
526 Main Street  
Juneau, AK, 99801

DRAWN BY: PEL

E0.1

LEGEND, SCHEDULE,  
DETAIL

PROJECT DESIGNATION NUMBER

2017-0222-3524

STATE	YEAR
ALASKA	2017

Plotted 3/29/2017 11:42 AM by Kyle Dropeaux F:\PROJECTS\250 NORTHWIND ARCHITECTS\69 COMMUNITY BLDG GENERATOR\DRAWINGS\WORKING\E1.0.DWG

NOTE: LOCATE EXISTING 120-240V AND 208Y/120V SERVICE CONDUITS BEFORE EXCAVATION. REMOVE 120-240V CONDUITS WHERE/IF EXPOSED. REROUTE 208Y/120V CONDUIT IF EXPOSED.

MARCH 29, 2017

ADDENDUM NUMBER

ATTACHMENT NUMBER

RECORD OF REVISIONS

No.	DATE	DESCRIPTION

STATE OF ALASKA  
DEPARTMENT OF ADMINISTRATION

Division of General Services  
Facilities Section  
PO Box 11210  
Juneau, AK 99811-0210

COMMUNITY BUILDING  
GENERATOR INSTALLATION



NorthWind Architects, LLC  
www.NorthWindArch.com  
126 Seward Street  
Juneau, AK, 99801

Haight & Associates, Inc.  
www.Haight-Assoc.com  
526 Main Street  
Juneau, AK, 99801

1" ACTUAL  
IF THE ABOVE DIMENSION DOES NOT MEASURE ONE INCH (1") EXACTLY, THIS DRAWING WILL HAVE BEEN ENLARGED OR REDUCED, AFFECTING ALL LABELED SCALES.

DRAWN BY: PEL

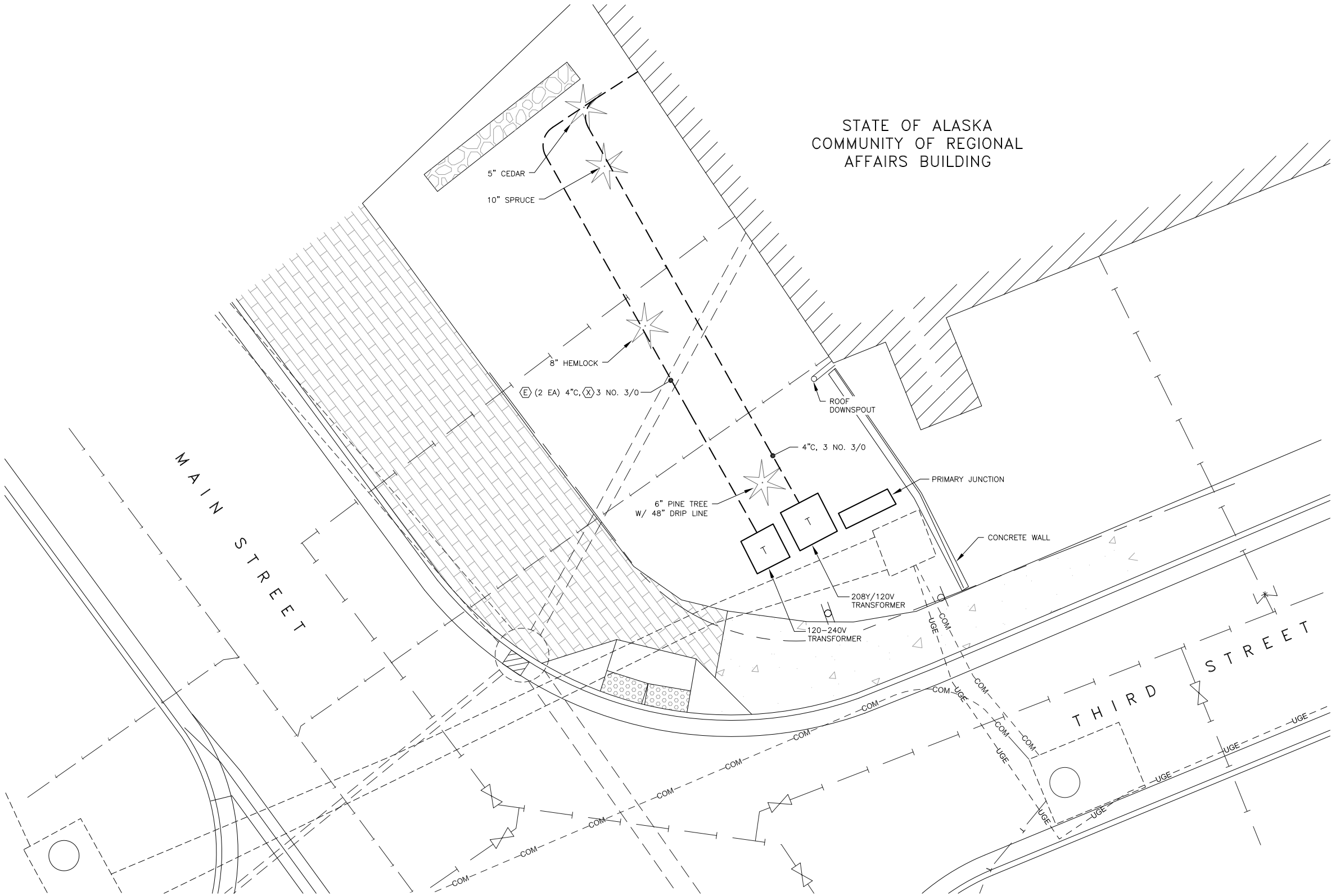
E1.0

SITE PLAN - EXISTING

PROJECT DESIGNATION NUMBER

2017-0222-3524

STATE	YEAR
ALASKA	2017

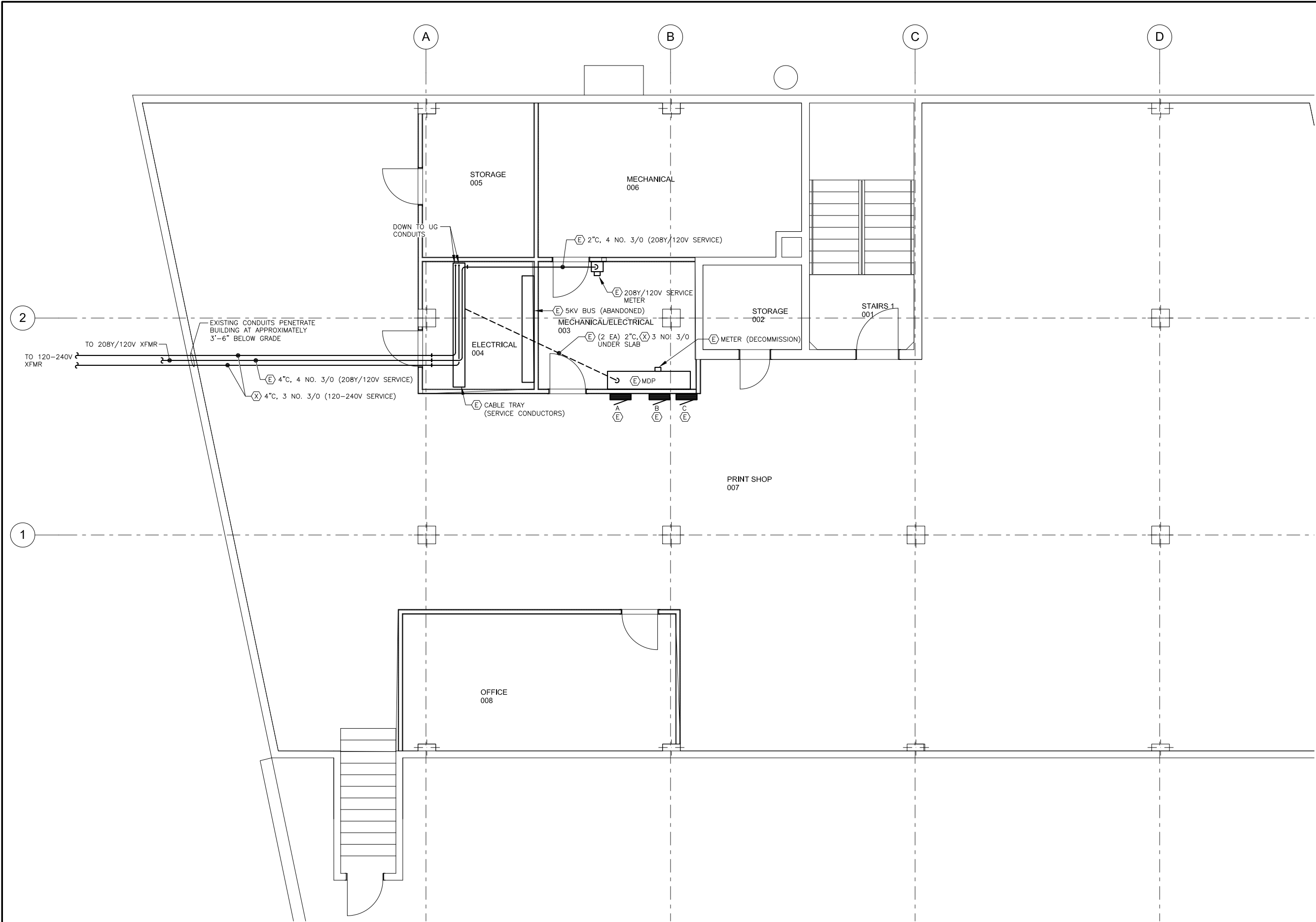


1 SITE PLAN - EXISTING

SCALE: 0 5' 10'



Plotted 3/29/2017 11:42 AM by Kyle Dropeaux F:\PROJECTS\250 NORTHWIND ARCHITECTS\69 COMMUNITY BLDG GENERATOR\DRAWINGS\WORKING\E1.1.DWG



1 BASEMENT FLOOR PLAN - EXISTING

SCALE: 0 2' 4' 8'

MARCH 29, 2017

ADDENDUM NUMBER

ATTACHMENT NUMBER

RECORD OF REVISIONS

No.	DATE	DESCRIPTION

STATE OF ALASKA  
DEPARTMENT OF ADMINISTRATION

Division of General Services  
Facilities Section  
PO Box 11210  
Juneau, AK 99811-0210

COMMUNITY BUILDING  
GENERATOR INSTALLATION

NorthWind Architects, LLC  
www.NorthWindArch.com  
126 Seward Street  
Juneau, AK, 99801

Haight & Associates, Inc.  
www.Haight-Assoc.com  
526 Main Street  
Juneau, AK, 99801

1" ACTUAL

IF THE ABOVE DIMENSION DOES NOT MEASURE ONE INCH (1") EXACTLY, THIS DRAWING WILL HAVE BEEN ENLARGED OR REDUCED, AFFECTING ALL LABELED SCALES.

DRAWN BY: PEL

E1.1

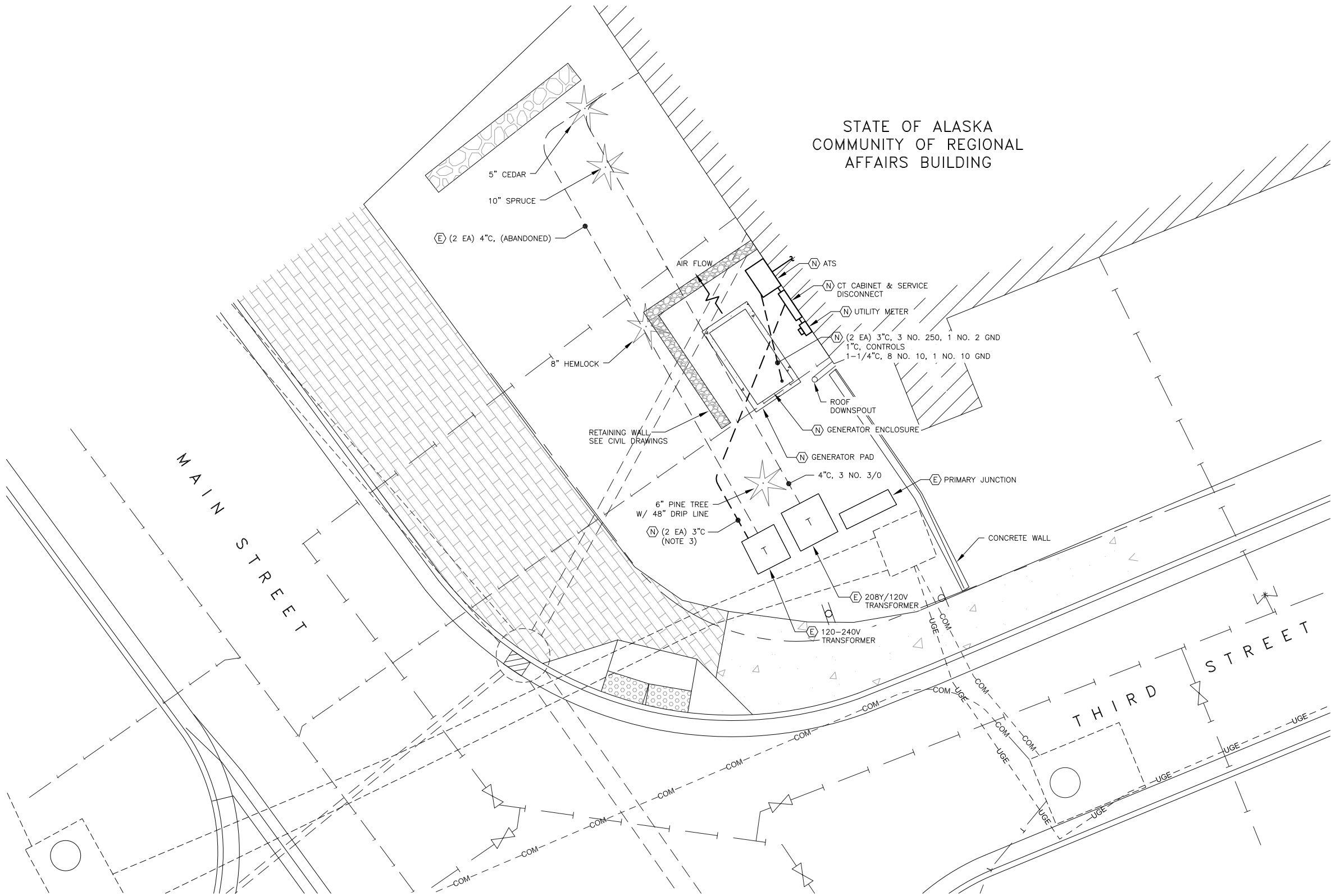
BASEMENT FLOOR  
PLAN - EXISTING

PROJECT DESIGNATION NUMBER

2017-0222-3524

STATE	YEAR
ALASKA	2017

Plotted 3/29/2017 11:42 AM by Kyle Dropeaux F:\PROJECTS\250 NORTHWIND ARCHITECTS\69 COMMUNITY BLDG GENERATOR\DRAWINGS\WORKING\E2.0.DWG



1 SITE PLAN - NEW

SCALE: 0 5' 10'

NOTES:

1. COORDINATE SIZE OF GENERATOR SLAB WITH SIZE OF GENERATOR. ALLOW A MINIMUM OF 6" OF CONCRETE SLAB BEYOND EACH SIDE OF THE GENERATOR.
2. EXISTING 208Y/120V SERVICE MAY COME INTO CONFLICT WITH EXCAVATION. RELOCATE AS NECESSARY TO MAINTAIN BURIAL DEPTH. COORDINATE WITH UTILITY.
3. EXISTING SERVICE CONDUIT MAY BE USED TO AVOID TREE REMOVAL.

MARCH 29, 2017

ADDENDUM NUMBER

ATTACHMENT NUMBER

RECORD OF REVISIONS

No.	DATE	DESCRIPTION

STATE OF ALASKA  
DEPARTMENT OF ADMINISTRATION

Division of General Services  
Facilities Section  
PO Box 11210  
Juneau, AK 99811-0210

COMMUNITY BUILDING  
GENERATOR INSTALLATION



NorthWind Architects, LLC  
www.NorthWindArch.com  
126 Seward Street  
Juneau, AK, 99801

Haight & Associates, Inc.  
www.Haight-Assoc.com  
526 Main Street  
Juneau, AK, 99801

1" ACTUAL  
IF THE ABOVE DIMENSION DOES NOT MEASURE ONE INCH (1") EXACTLY, THIS DRAWING WILL HAVE BEEN ENLARGED OR REDUCED, AFFECTING ALL LABELED SCALES.

DRAWN BY: PEL

E2.0

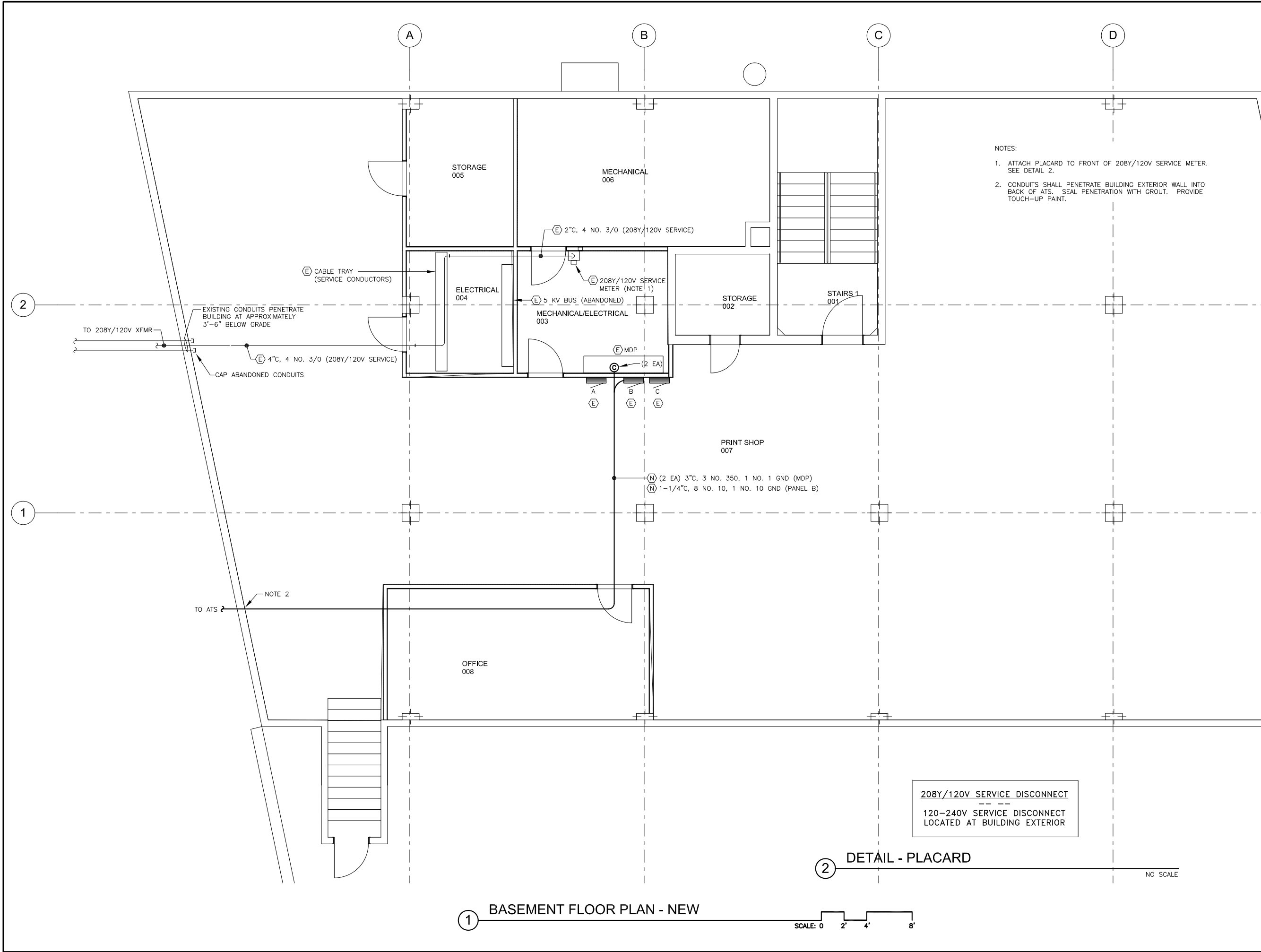
SITE PLAN - NEW

PROJECT DESIGNATION NUMBER

2017-0222-3524

STATE	YEAR
ALASKA	2017

Plotted 3/29/2017 11:42 AM by Kyle Dropeaux F:\PROJECTS\250 NORTHWIND ARCHITECTS\69 COMMUNITY BLDG GENERATOR\DRAWINGS\WORKING\E2.1.DWG



MARCH 29, 2017

ADDENDUM NUMBER

ATTACHMENT NUMBER

RECORD OF REVISIONS

No.	DATE	DESCRIPTION

STATE OF ALASKA  
DEPARTMENT OF ADMINISTRATION

Division of General Services  
Facilities Section  
PO Box 11210  
Juneau, AK 99811-0210

COMMUNITY BUILDING  
GENERATOR INSTALLATION

NorthWind Architects, LLC  
www.NorthWindArch.com  
126 Seward Street  
Juneau, AK, 99801  
  
Haight & Associates, Inc.  
www.Haight-Assoc.com  
526 Main Street  
Juneau, AK, 99801

DRAWN BY: PEL

E2.1

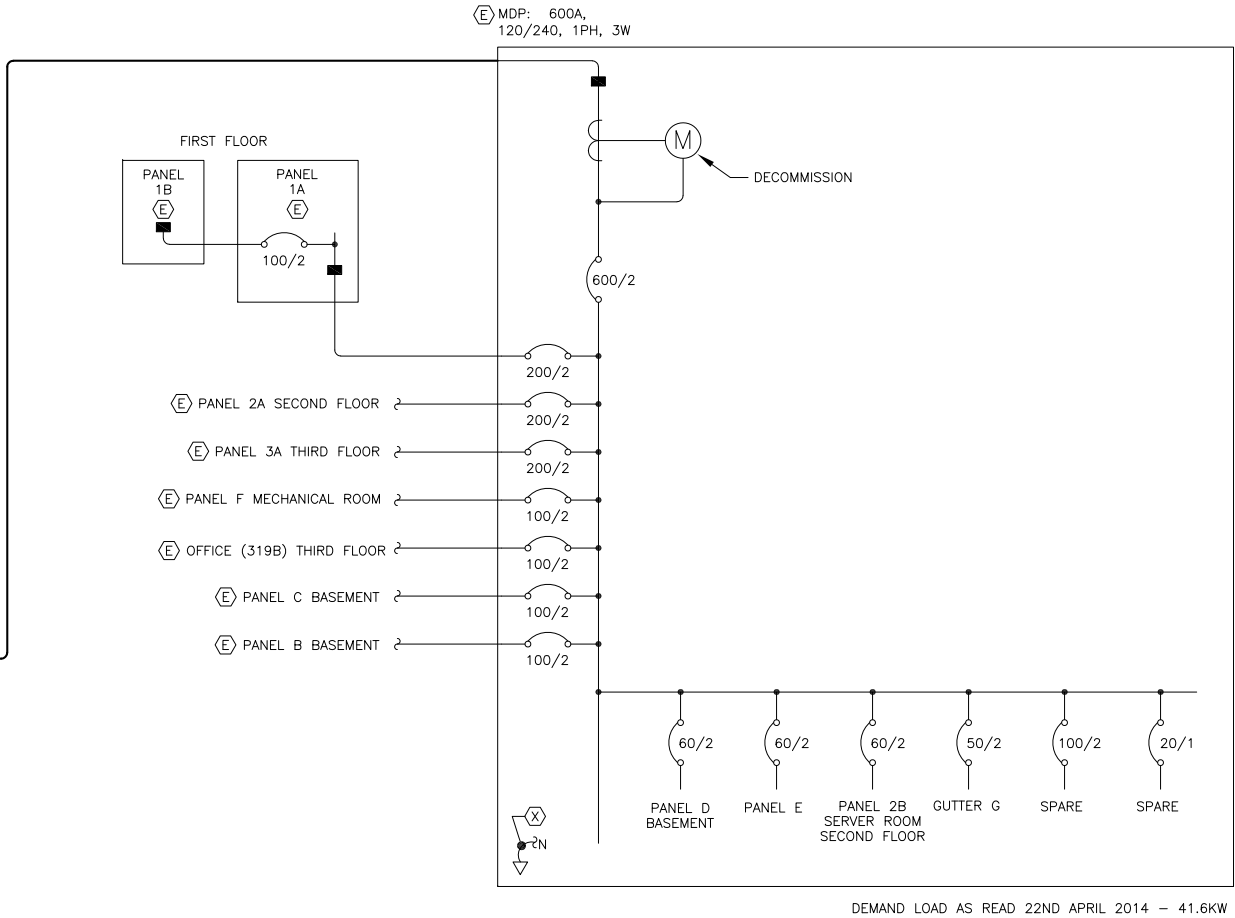
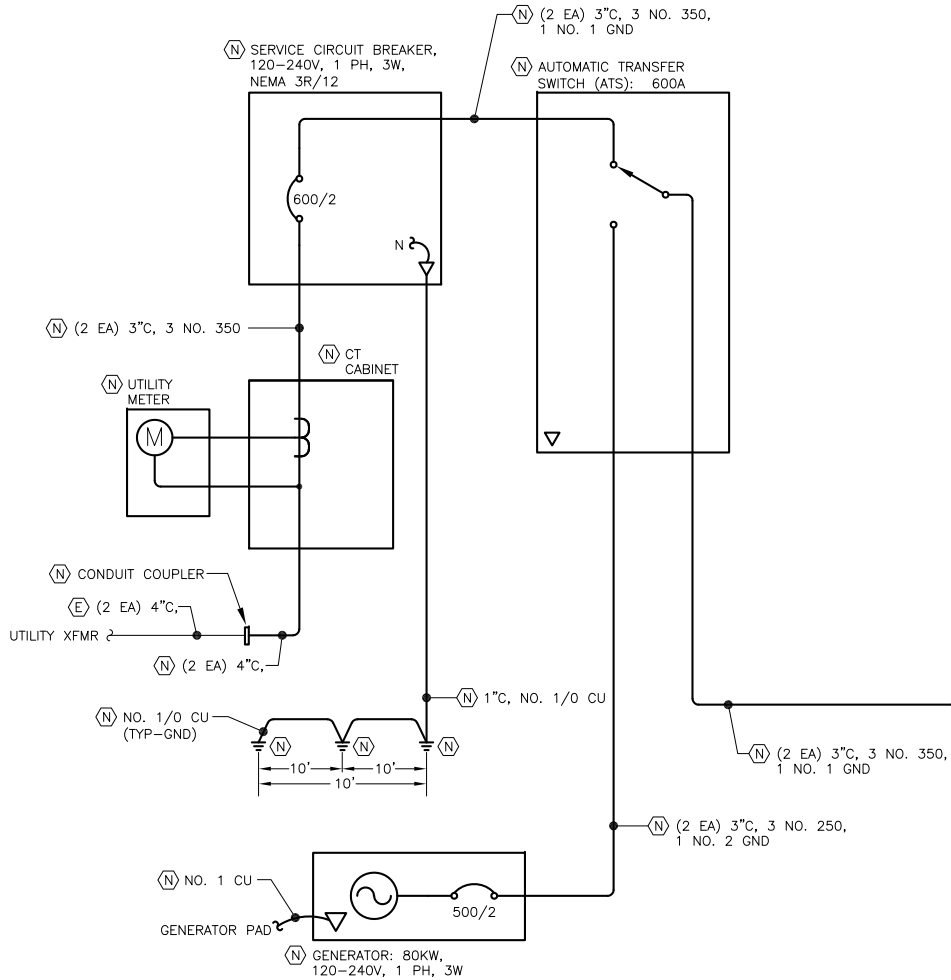
BASEMENT FLOOR  
PLAN - NEW

PROJECT DESIGNATION NUMBER

2017-0222-3524

STATE	YEAR
ALASKA	2017





1 SINGLE LINE DIAGRAM - 120-240V POWER DISTRIBUTION SYSTEM  
NO SCALE

MARCH 29, 2017

ADDENDUM NUMBER

ATTACHMENT NUMBER

RECORD OF REVISIONS

No.	DATE	DESCRIPTION

STATE OF ALASKA  
DEPARTMENT OF ADMINISTRATION

Division of General Services  
Facilities Section  
PO Box 11210  
Juneau, AK 99811-0210

COMMUNITY BUILDING  
GENERATOR INSTALLATION



NorthWind Architects, LLC  
www.NorthWindArch.com  
126 Seward Street  
Juneau, AK, 99801

Haight & Associates, Inc.  
www.Haight-Assoc.com  
526 Main Street  
Juneau, AK, 99801

1" = ACTUAL  
IF THE ABOVE DIMENSION DOES NOT MEASURE ONE INCH (1") EXACTLY, THIS DRAWING WILL HAVE BEEN ENLARGED OR REDUCED, AFFECTING ALL LABELED SCALES.

DRAWN BY: PEL

E2.2

SINGLE LINE  
DIAGRAM

PROJECT DESIGNATION NUMBER

2017-0222-3524

STATE	YEAR
ALASKA	2017