

GENERAL NOTES:

- A. COORDINATE WITH ARCHITECTURAL REFLECTED CEILING PLAN FOR FINAL LOCATION OF ELECTRICAL EQUIPMENT AND DEVICES.
- B. EXISTING FIRE ALARM SYSTEM IS SIMPLEX #4100 ADDRESSABLE SYSTEM. NEW FIRE ALARM DEVICES SHALL BE LISTED FOR USE IN THE SYSTEM AND MATCH THE EXISTING FIRE ALARM SYSTEM WIRING. SEE 2/E1.1 FOR LOCATION OF EXISTING FIRE ALARM PANEL.
- C. CONTRACTOR SHALL PROVIDE REMOTE BOOSTER POWER SUPPLY AS REQUIRED TO ACCOMMODATE ADDITIONAL HORN/STROBES. REPROGRAM EXISTING FIRE ALARM SYSTEM TO ACCEPT NEW FIRE ALARM DEVICES.
- D. CONTRACTOR SHALL PULL OFCI CABLE TO ALL AUDIO/VIDEO LOCATIONS. SEE 1/E5.1 FOR A/V SYSTEM RISER DIAGRAM.
- E. ALL NEW TELECOM CABLING SHALL BE TERMINATED ON A NEW 48-PORT PATCH PANEL IN THE EXISTING TELECOM RACK IN TELECOM ROOM 100U9. PROVIDE NEW PATCH PANEL AS SPECIFIED.
- F. EXISTING CABLE TRAY SHOWN PER RECORD DRAWINGS AND A LIMITED VISUAL INSPECTION. AT CONTRACTORS OPTION, CABLE TRAY MAY BE USED FOR NEW CABLING WHERE AVAILABLE AND FILL IS ACCEPTABLE.

©2015 ECI/Hyer, Inc.

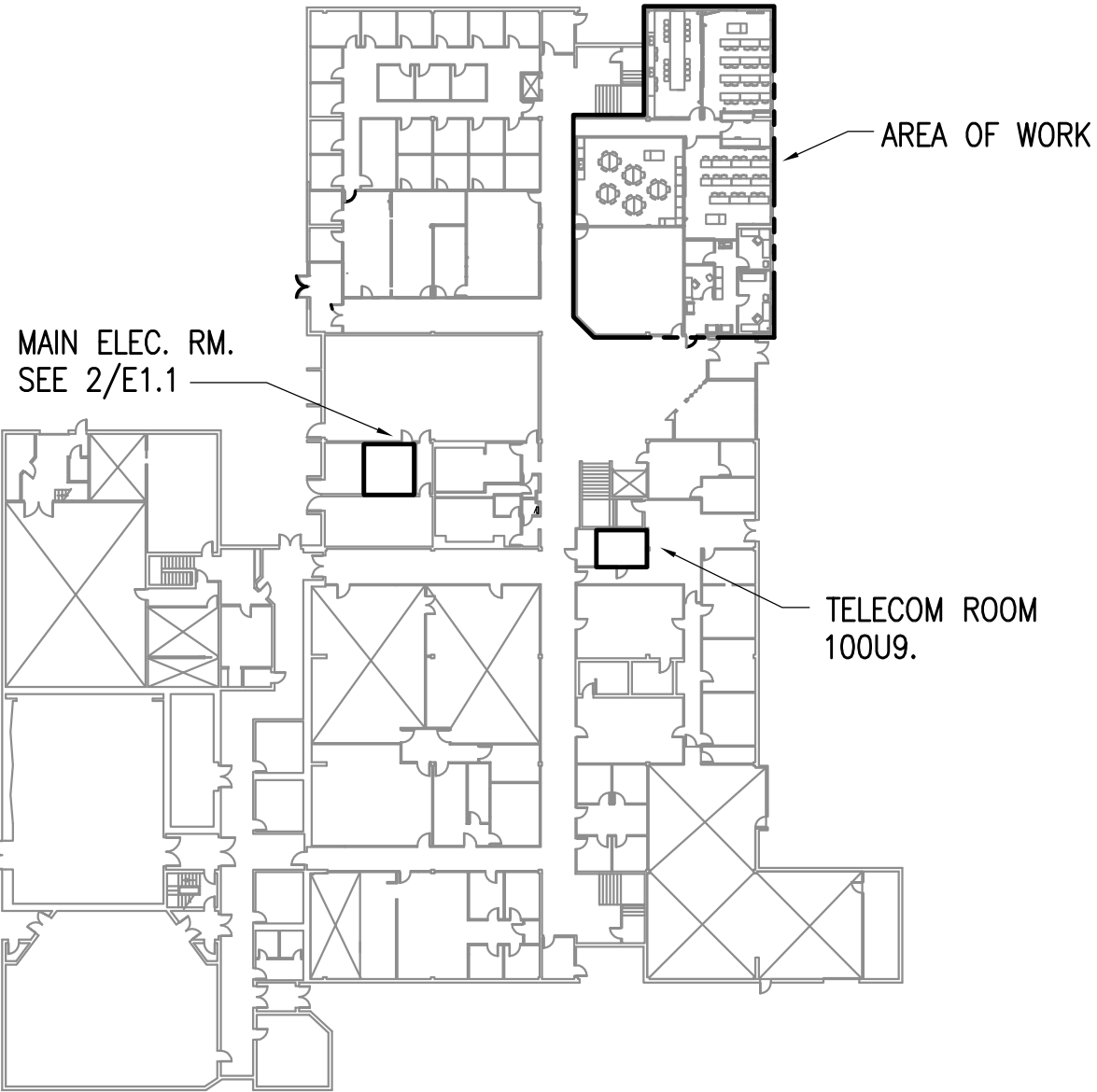
RS|A Engineering, Inc.
MECHANICAL AND ELECTRICAL CONSULTING ENGINEERS
670 West Firwood Lane, Suite 200 Anchorage, AK 99503 (807) 276-0621
1110 South Steese Avenue, Suite 101 Wasilla, AK 99566 (807) 357-1521
Corporate No.: ALEC5542

ECI/HYER ARCHITECTURE + INTERIORS
3909 Arctic Boulevard, Suite 103
ANCHORAGE, ALASKA 99503 907.561.5543
PROJECT NO. 13-008.11

UAA/ISU

Phase II Doctor of Pharmacy Program
Tenant Improvements at the PSB Building

CONSTRUCTION DOCUMENTS



1ST FLOOR KEY PLAN

1" = 50'-0"

1 SIGNAL REMODEL PLAN

1/4" = 1'-0"

SHEET NOTES:

- NEW FIRE ALARM HORN/STROBE. PROVIDE NEW CONDUIT AND CABLE. CONNECT TO EXISTING FIRE ALARM NAC.
- EXISTING ACCESS CONTROL SYSTEM SITE CONTROLLER AND NETWORK INTERFACE MODULE IS LOCATED HERE. SEE 3/E5.1 FOR ONE-LINE DIAGRAM.
- PROVIDE CONNECTION TO AV ROOM FOR OFCI TELEVISION. COORDINATE WITH OWNER PRIOR TO ROUGH-IN FOR EXACT LOCATION. SEE 1/E5.1 FOR A/V RISER DIAGRAM.
- PROVIDE CONNECTION TO AV ROOM FOR OFCI VIDEO CAMERA. COORDINATE WITH OWNER PRIOR TO ROUGH-IN FOR EXACT LOCATION.
- JUNCTION BOX WITH 1"C TO ABOVE CEILING FROM DIVIDED SURFACE RACEWAY FOR DATA CABLING.
- NEW MAGSTRIPE CARD READER AND ELECTRIFIED DOOR HARDWARE. PROVIDE CONNECTION TO TELECOM ROOM SHOWN FOR CONNECTION INTO EXISTING ACCESS CONTROL SYSTEM. DOOR HARDWARE SPECIFIED AND PROVIDED UNDER DIVISION 8. SEE 4/E5.1.
- LOCATION FOR WIRELESS ACCESS POINT. PROVIDE CATEGORY 6A TELECOM OUTLET ABOVE CEILING WITH (1) JACK. INSTALLATION AND CONFIGURATION OF EQUIPMENT SHALL BE BY UAA.
- PROVIDE AND INSTALL TELECOM JACK IN POP-UP POWER/DATA INSERT FOR THE (2) LARGER TABLES IN EACH ROW. PROVIDE ONE-SIDE PATCH CORD AND TERMINATE AT PROVIDED JACK.
- PROVIDE CONDUIT STUB TO SPACE ABOVE CEILING FROM RECESSED A/V BOX FOR OFCI TELEVISION.
- PROVIDE AND INSTALL TELECOM JACK IN POP-UP POWER/DATA INSERT FOR THE (3) LARGER TABLES IN EACH ROW. PROVIDE ONE-SIDE PATCH CORD AND TERMINATE AT PROVIDED JACK. CABLING AT THESE TELECOM OUTLETS SHALL BE EXISTING, PULLED BACK FROM PRIOR USE IN CLASSROOM 109.
- OFCI A/V RACKS. PROVIDE FIBER OPTIC BACKBONE CABLE FROM ONE RACK TO TELECOM ROOM 100U9. SEE KEY PLAN FOR LOCATION. TOTAL DISTANCE TO TELECOM ROOM IS APPROXIMATELY 200'. TERMINATE CABLE IN NEW FIBER CONNECTOR HOUSING IN TELECOM ROOM AND IN A/V RACK. PROVIDE FIBER PATCH CORDS AT BOTH ENDS FOR CONNECTION TO NETWORK SWITCHES. SWITCHES AND FIBER OPTIC TRANSCEIVERS WILL BE PROVIDED BY UAA.
- PROVIDE CONNECTION TO A/V CABINET FOR OFCI TELEVISION. COORDINATE WITH OWNER PRIOR TO ROUGH-IN FOR EXACT LOCATION.
- TELECOM OUTLET FOR A/V CABINET. PROVIDE CONNECTION TO AV RACKS IN AV CONTROL 105.
- NEW TELECOM OUTLETS ABOVE COUNTER USING CABLE FROM DEMOLISHED FLOOR-MOOUNTED ASSEMBLY.
- SINGLE-PORT TELECOM OUTLET FOR WALL-MOUNTED OFOI TELEPHONE.
- PROVIDE 1.5"C AND JUNCTION BOX WITH GROMMET. CONNECT TO A/V CABINET.

FULL SIZE PRINTED ON 22 x 34

SIGNAL REMODEL PLAN

AUTHOR: JAM,RWM CHECKED: JAM,RLW
OWNER PROJECT #: L5202.10
ISSUE DATE: 3-14-17
REVISION:

E4.1