

GENERAL NOTES:

A. COORDINATE WITH ARCHITECTURAL REFLECTED CEILING PLAN FOR FINAL LOCATION OF ELECTRICAL EQUIPMENT AND DEVICES.

©2015 ECI/Hyer, Inc.

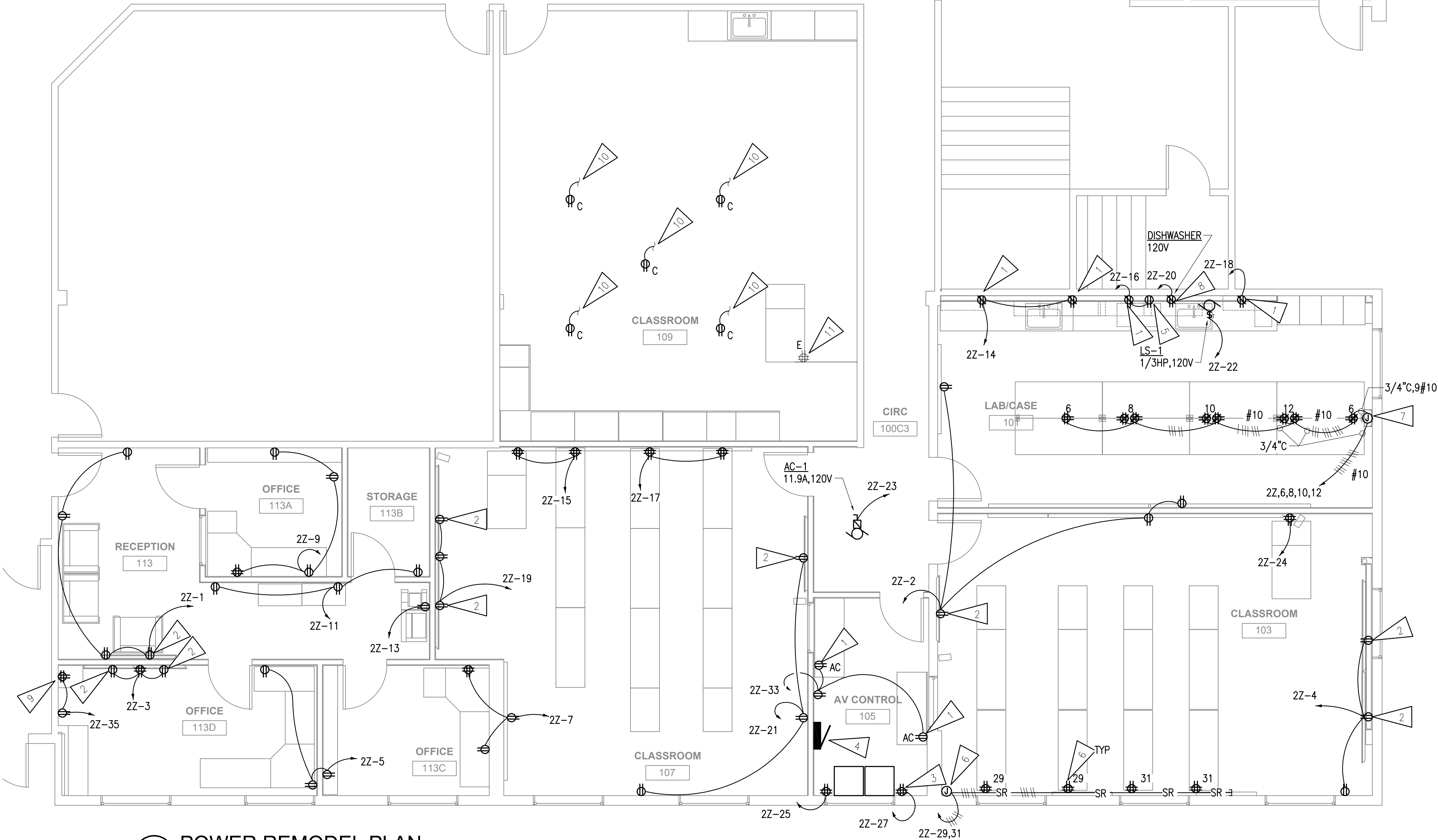
RS&A Engineering, Inc.
MECHANICAL AND ELECTRICAL CONSULTING ENGINEERS
670 West Firwood Lane, Suite 200, Anchorage, AK 99503 (807) 276-0821
1100 South Steadfast Avenue, Suite 101, Wasilla, AK 99566 (807) 357-1521
Corporate No.: AEC05542

ECI/HYER ARCHITECTURE + INTERIORS
3909 Arctic Boulevard, Suite 103
ANCHORAGE, ALASKA 99503 907.561.5543
PROJECT NO. 13-008.11

UAA/ISU

Phase II Doctor of Pharmacy Program
Tenant Improvements at the PSB Building

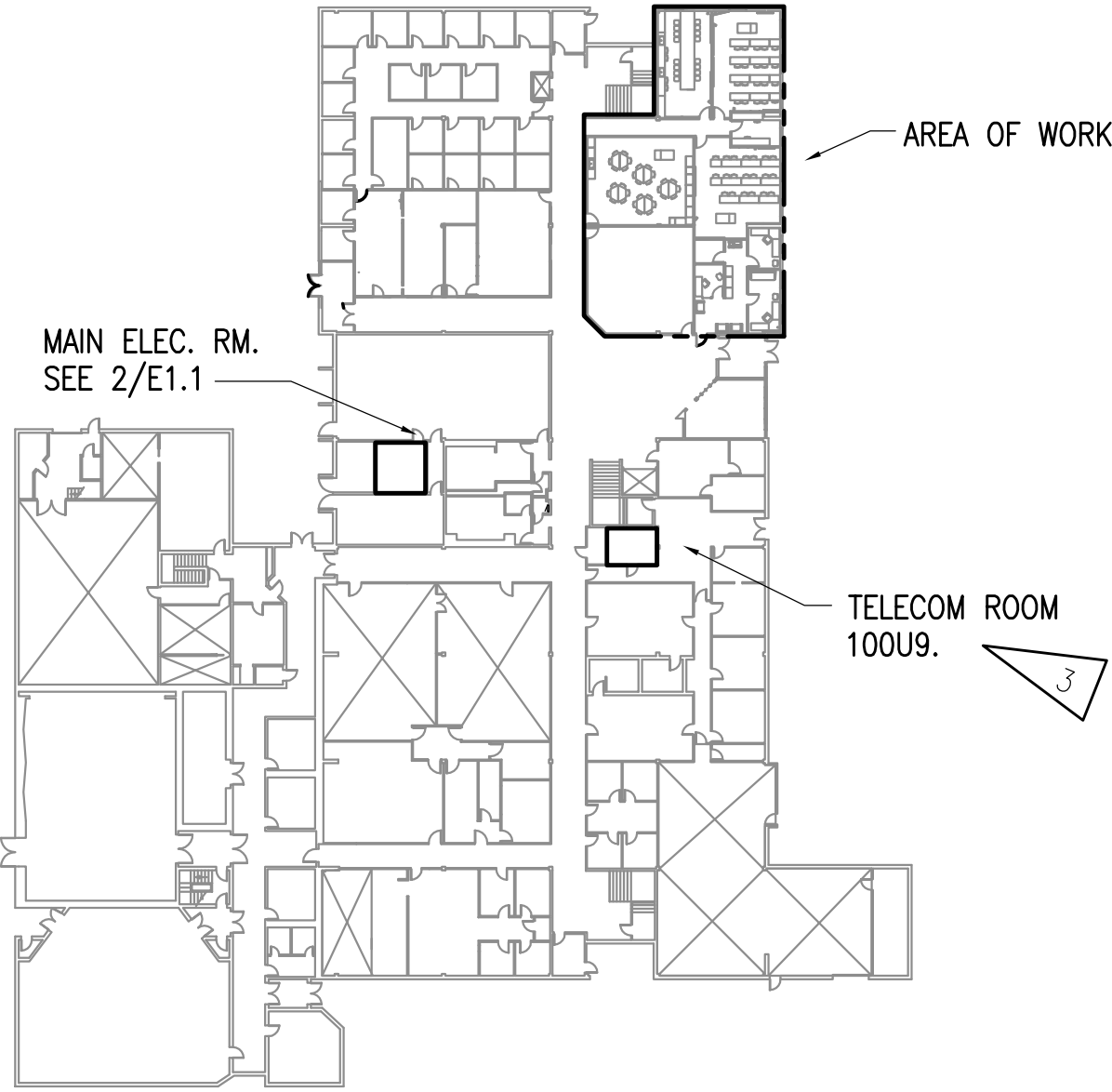
CONSTRUCTION DOCUMENTS



1 POWER REMODEL PLAN
1/4" = 1'-0"

SHEET NOTES:

1. INSTALL RECEPTACLE 6" ABOVE COUNTERTOP.
2. RECEPTACLE INSIDE RECESSED A/V BOX FOR OFCI TELEVISION. LOCATE BOX BEHIND LOWER HALF OF TELEVISION. SEE ARCHITECTURAL FOR ELEVATIONS. EXACT LOCATION SHOULD BE COORDINATED WITH TELEVISION MOUNTING HARDWARE TO AVOID CONFLICTS.
3. RECEPTACLE FOR OFCI A/V RACK. CONTRACTOR SHALL INSTALL RACK AT LOCATION SHOWN AND SECURE TO FLOOR. RACK IS A MIDDLE ATLANTIC 'AXS' SERIES SLIDE-OUT RACK, 43 RACK-MOUNT UNITS.
4. NEW PANEL '2Z'. SEE 1/E0.2 FOR ONE-LINE DIAGRAM.
5. RECEPTACLE FOR UNDER COUNTER REFRIGERATOR. CONNECT TO LOAD SIDE OF GFCI RECEPTACLE ABOVE COUNTER AND LABEL "GFCI PROTECTED".
6. JUNCTION BOX WITH 1"C TO ABOVE CEILING AND PANEL 2Z FROM DIVIDED SURFACE RACEWAY FOR POWER CABLING.
7. JUNCTION BOX FOR WIRING TO LAB ISLAND. RECEPTACLES WILL BE INSERTS PROVIDED WITH FURNITURE. PROVIDE CONNECTION TO CIRCUITS SHOWN.
8. INSTALL GFCI RECEPTACLE UNDER SINK FOR DISHWASHER.
9. QUAD RECEPTACLE FOR A/V CABINET. COORDINATE HEIGHT SO POSITIONED BEHIND CABINET, PRIOR TO ROUGH-IN.
10. CEILING-MOUNTED CORD REEL. EXTEND CIRCUIT AND RECONNECT TO EXISTING CIRCUITS USED FOR FLOOR-MOUNTED ASSEMBLY. COORDINATE LOCATION WITH TABLE LAYOUT PRIOR TO ROUGH-IN..
11. EXISTING FLOOR ASSEMBLY. RECONNECT RELOCATED LECTERN TO TELECOM AND POWER.



2 1ST FLOOR KEY PLAN
1" = 50'-0"

FULL SIZE PRINTED ON 22 x 34

POWER REMODEL PLAN

AUTHOR: JAM,RWM CHECKED: JAM,RLW
OWNER PROJECT #: L5202.10
ISSUE DATE: 3-14-17
REVISION: