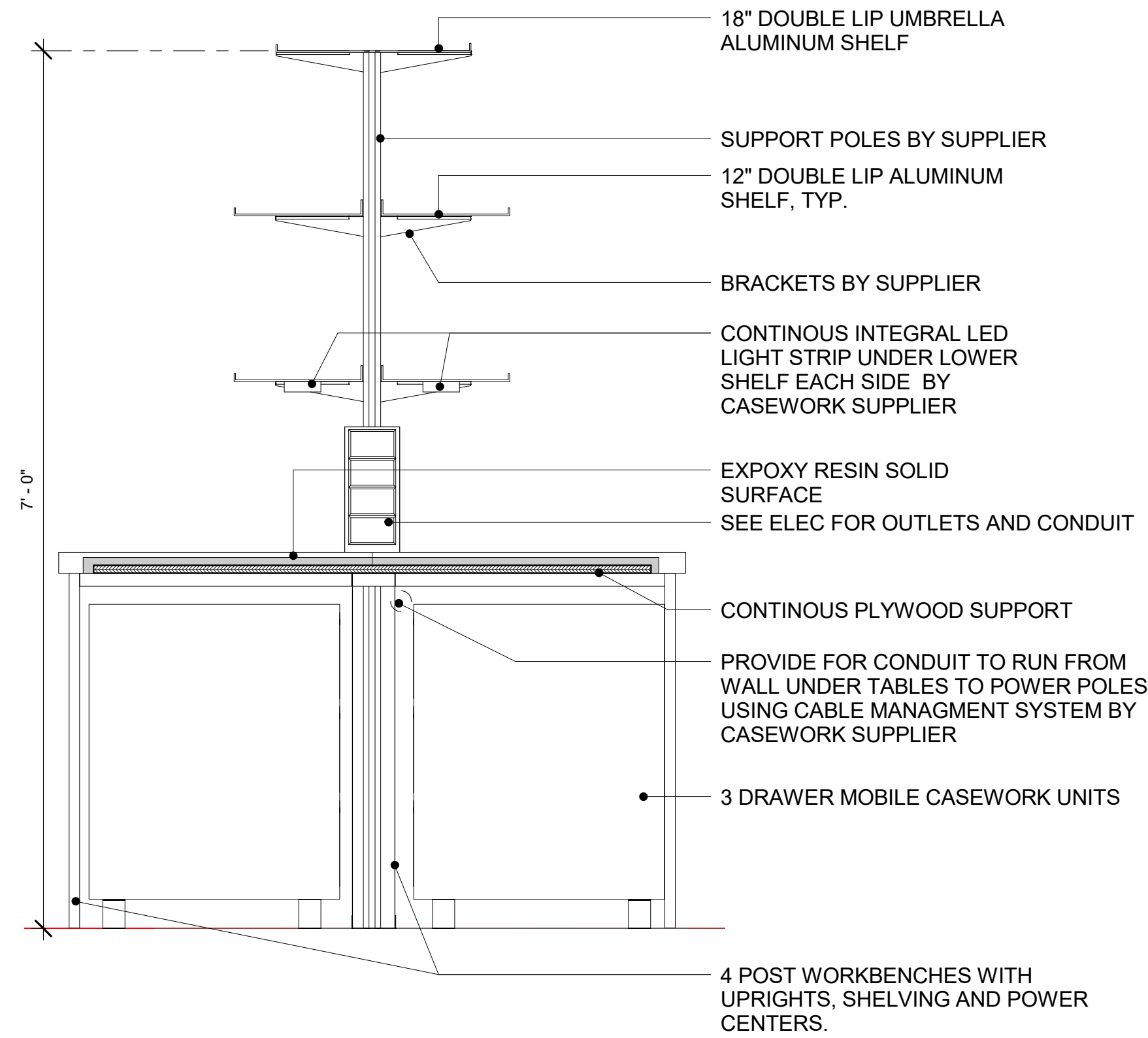
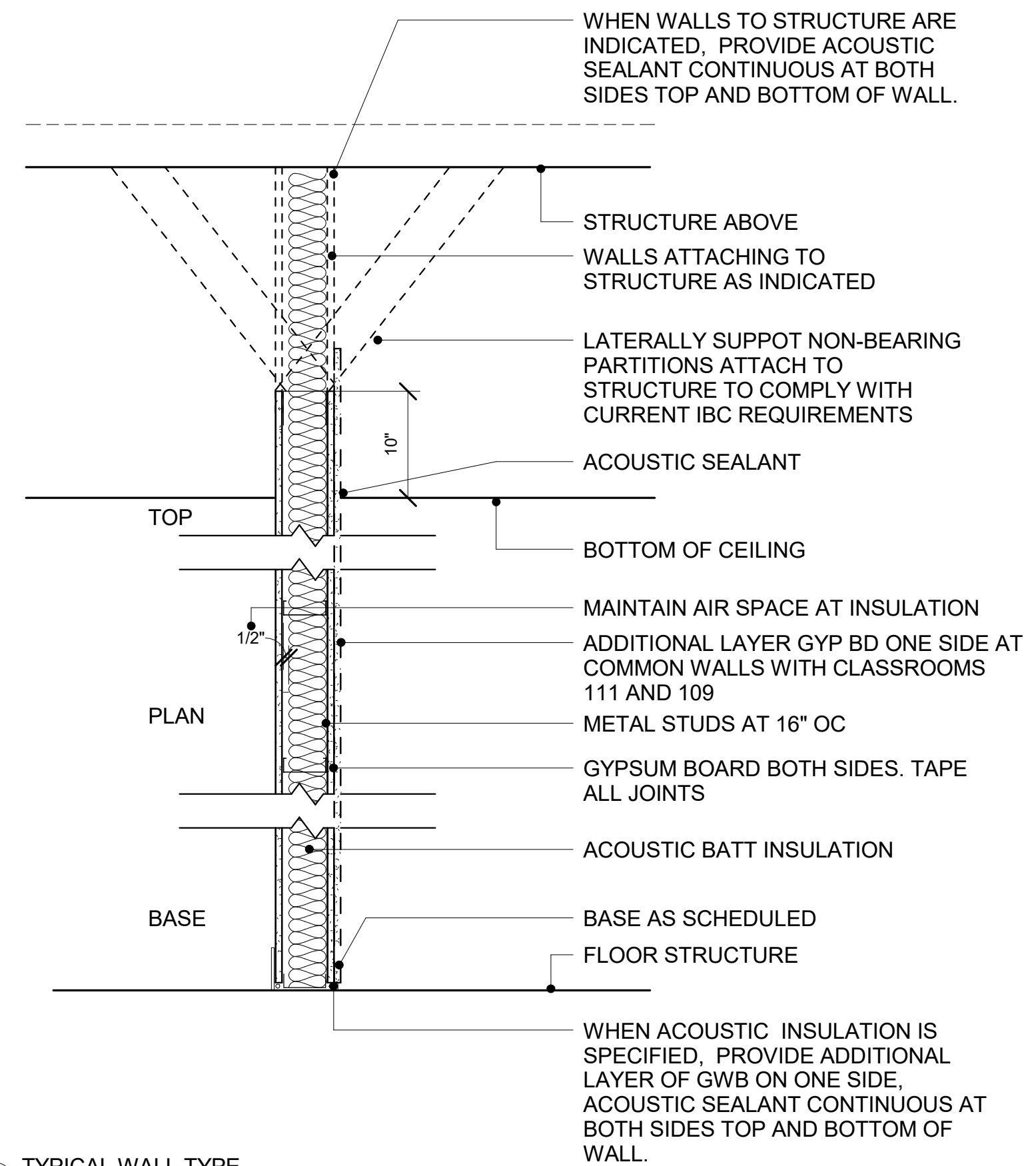


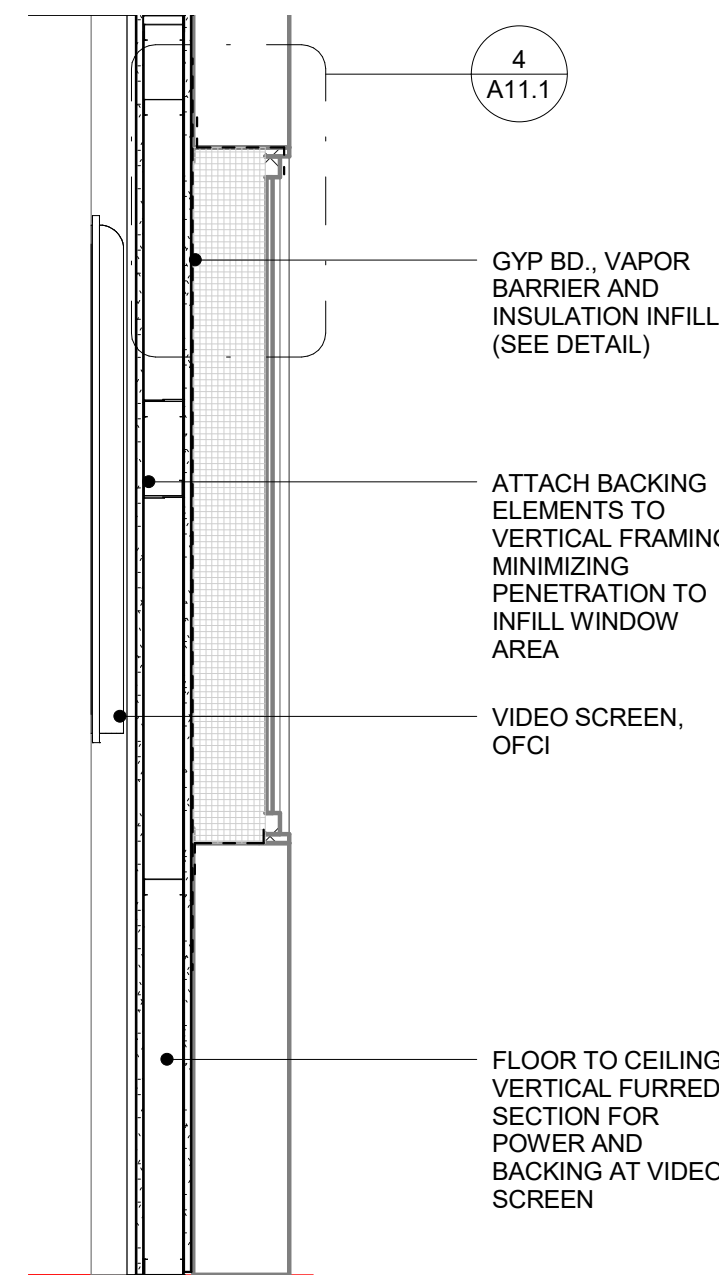
8 FRAMING ELEVATION AT WINDOW INFILL  
1/2" = 1'-0"



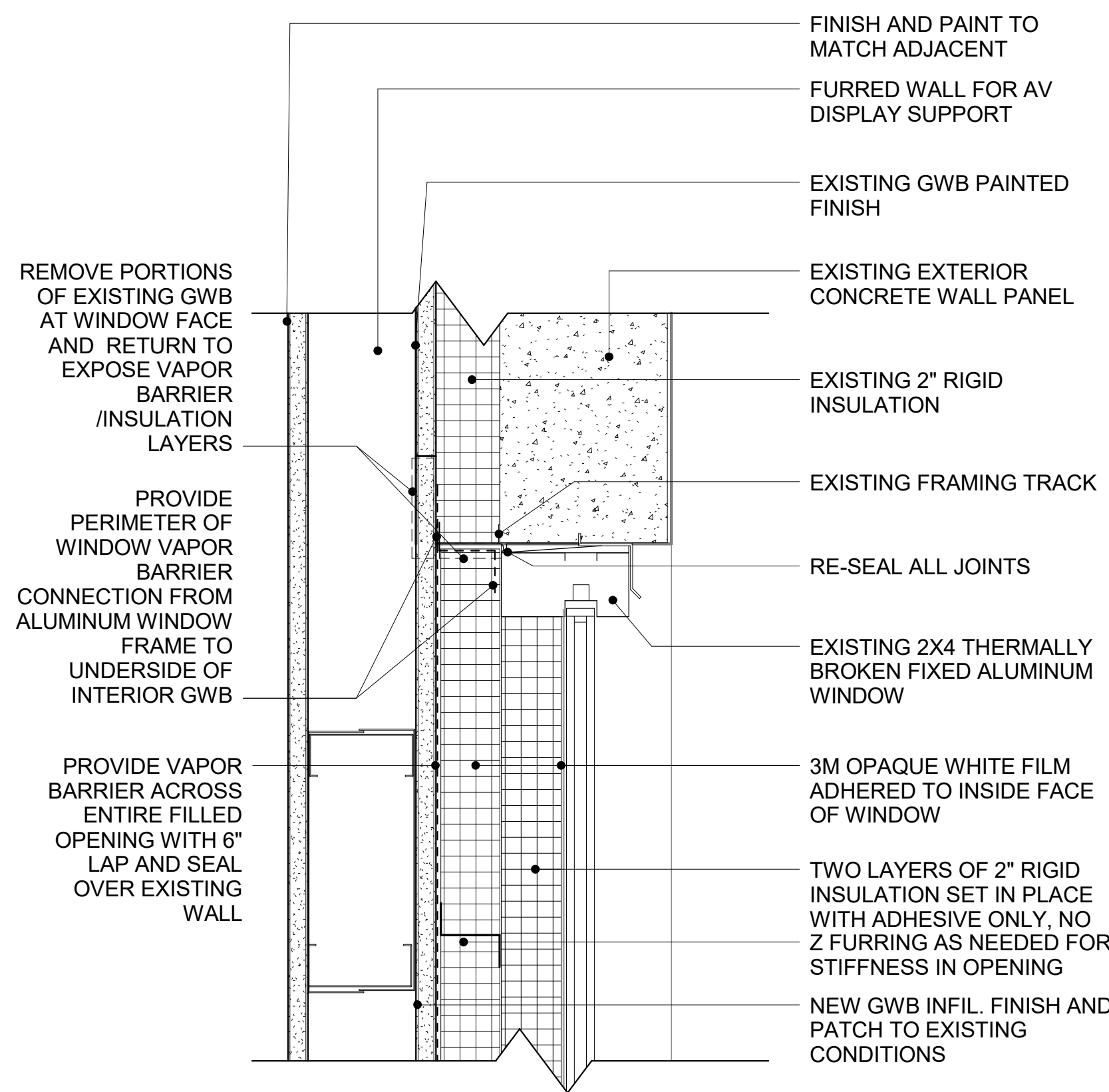
7 SECTION AT LAB WORK ISLAND  
1" = 1'-0"



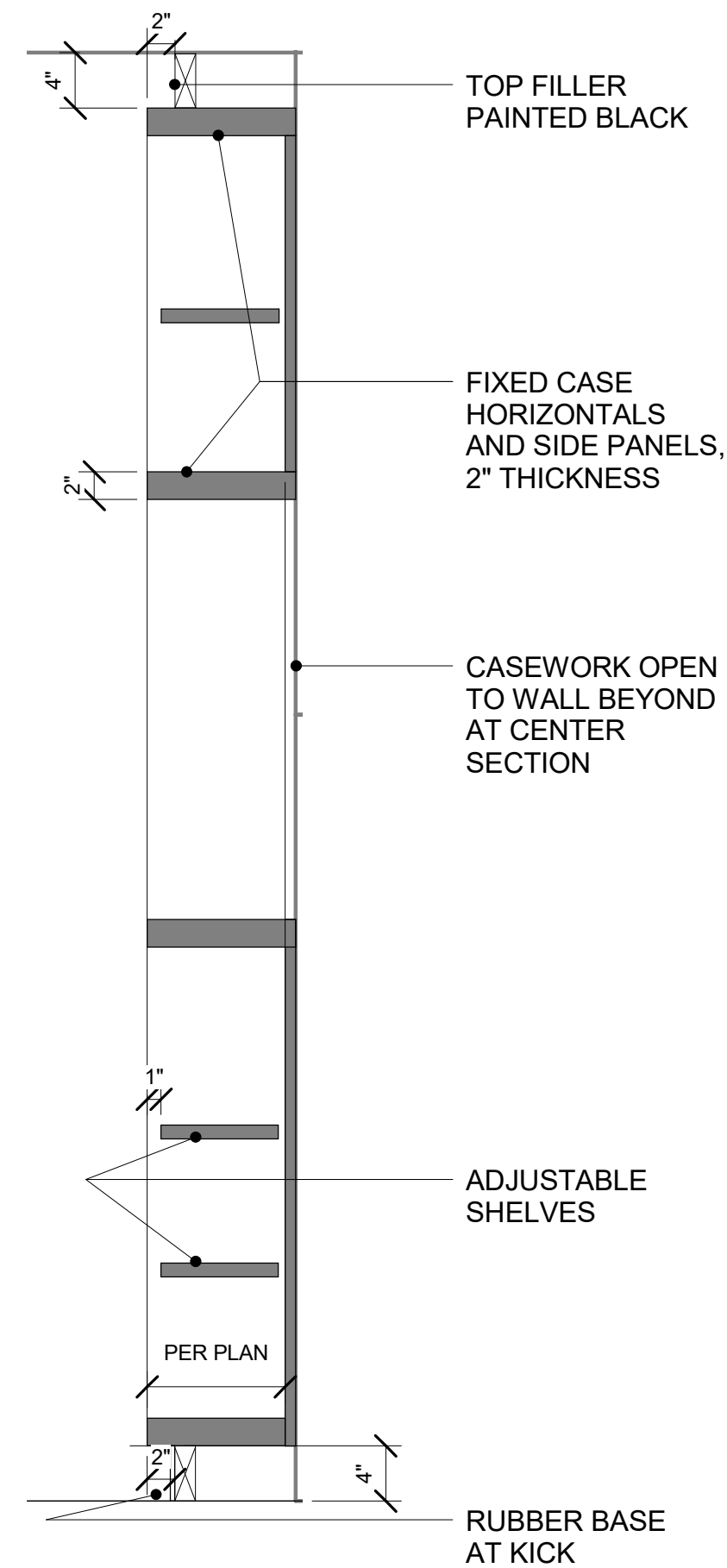
6 TYPICAL WALL TYPE  
1" = 1'-0"



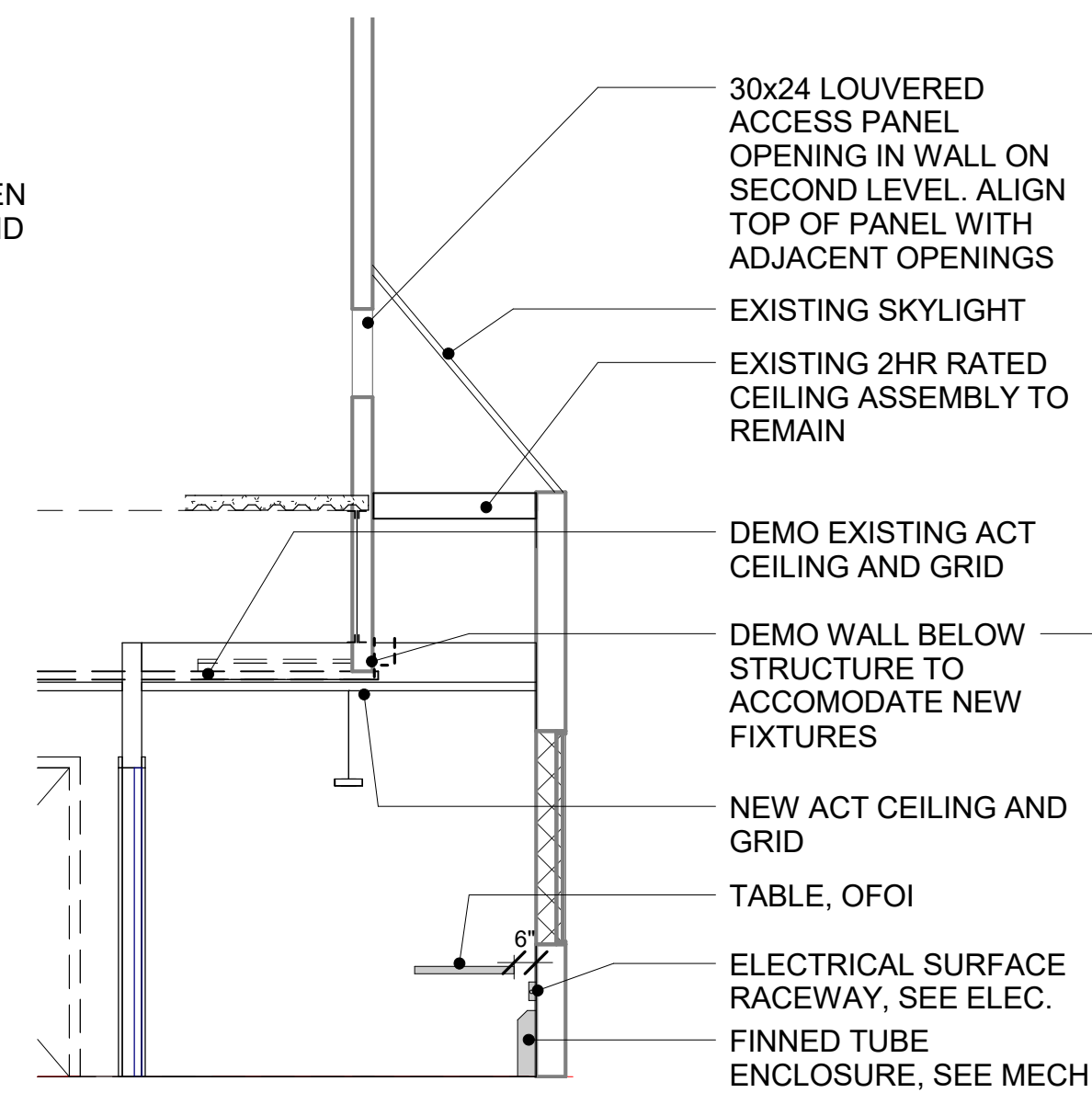
5 SECTION AT WINDOW INFILL  
3/4" = 1'-0"



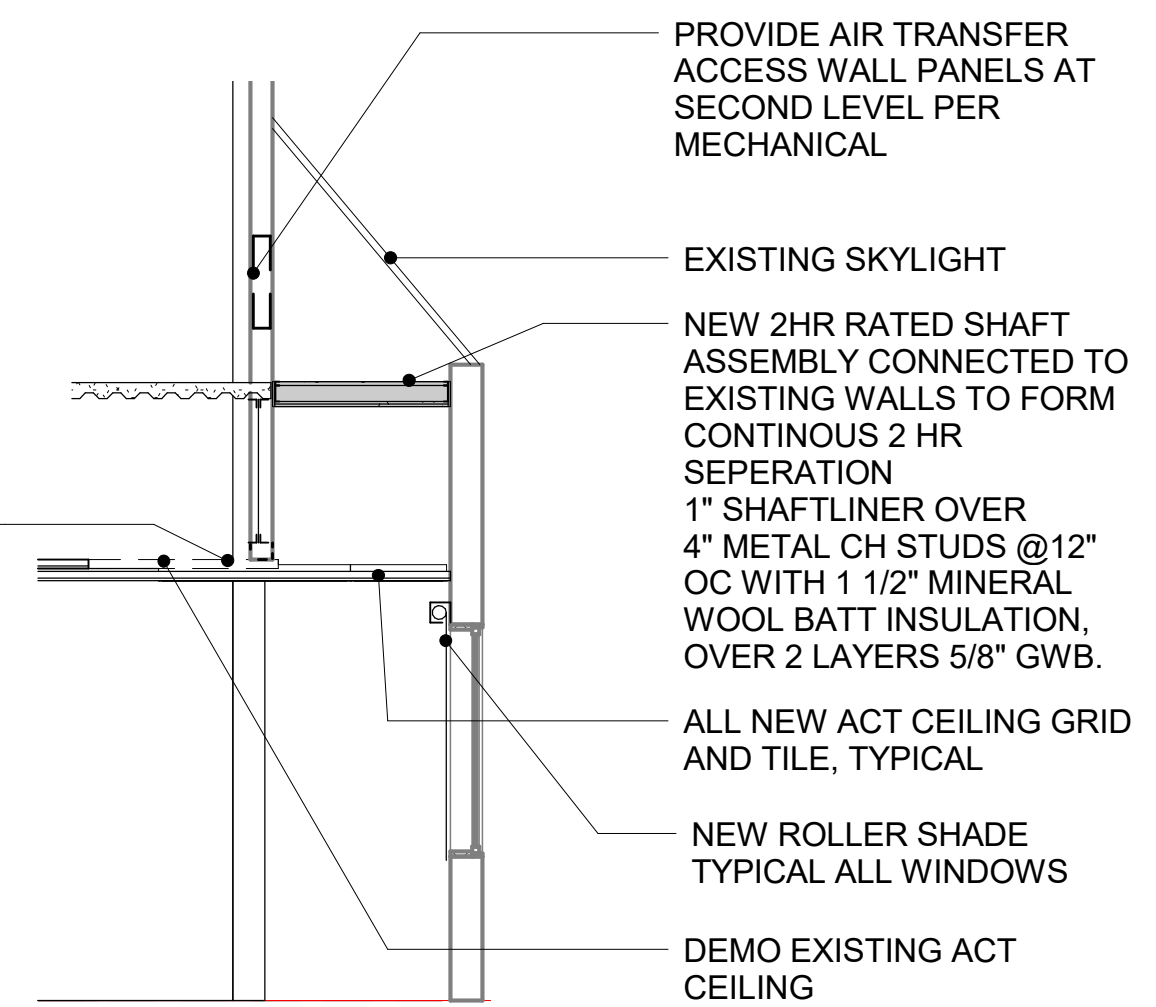
4 HEAD DETAIL INFILL WALL AT EXISTING WINDOW (JAMB/SILL SIM)  
3" = 1'-0"



3 SECTION AT OFFICE CASEWORK  
1" = 1'-0"



2 SECTION AT EXISTING AREAS WITH COVERED SKYLIGHT  
1/4" = 1'-0"



1 SECTION AT AREAS WITH EXISTING SKYLIGHT  
1/4" = 1'-0"

FULL SIZE PRINTED ON 22 x 34

DETAILS

AUTHOR: KMZ  
OWNER PROJECT #:  
ISSUE DATE: 03-14-17  
CHECKED: Checker  
REVISION:

UAA/ISU

Phase II Doctor of Pharmacy Program  
Tenant Improvements at the PSB Building  
CONSTRUCTION DOCUMENTS

ECI/HYER ARCHITECTURE + INTERIORS  
3909 Arctic Boulevard, Suite 103  
ANCHORAGE, ALASKA 99503 907.561.5543  
PROJECT NO. 13-008.11

©2017 ECI/Hyer, Inc.