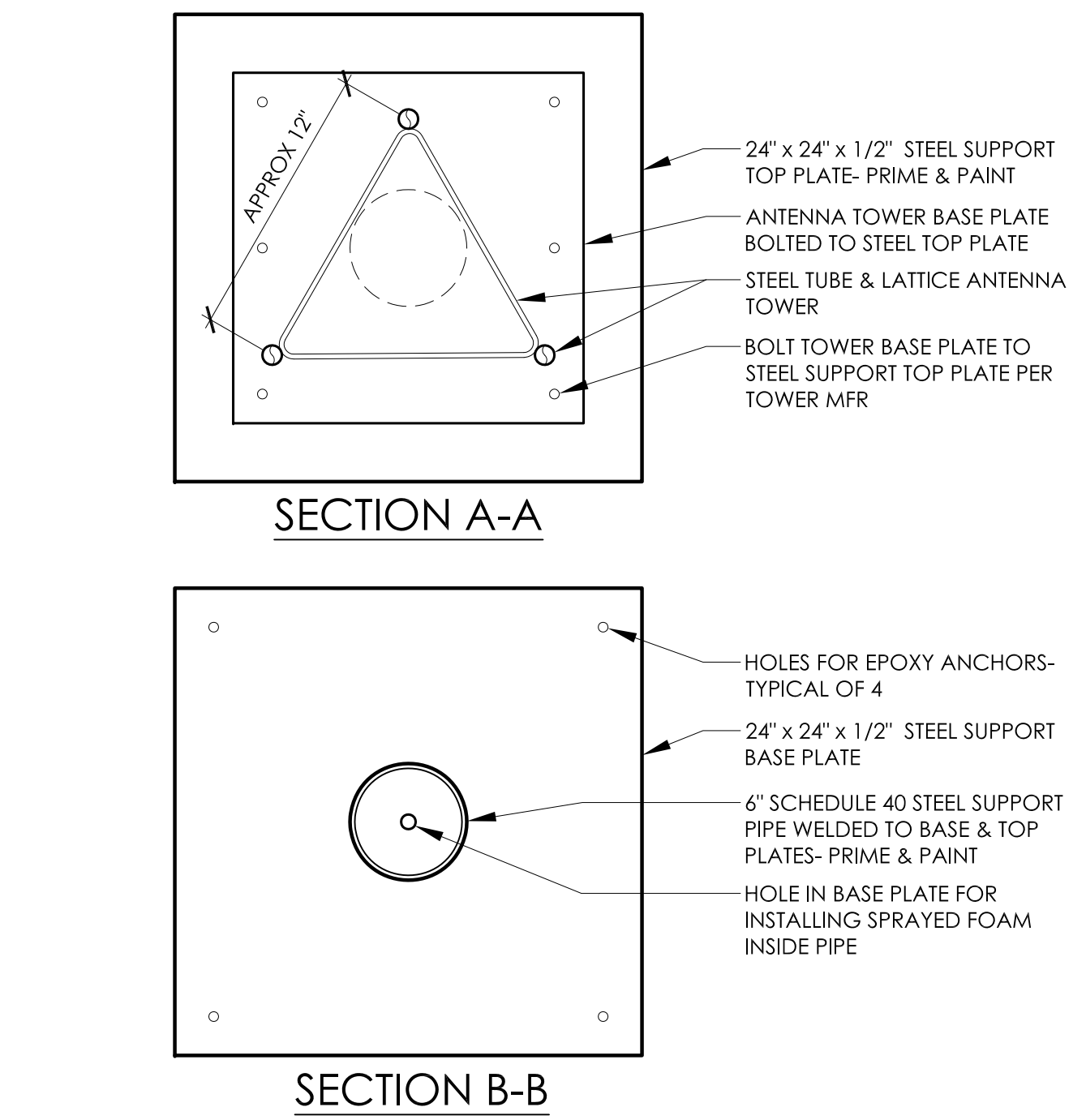
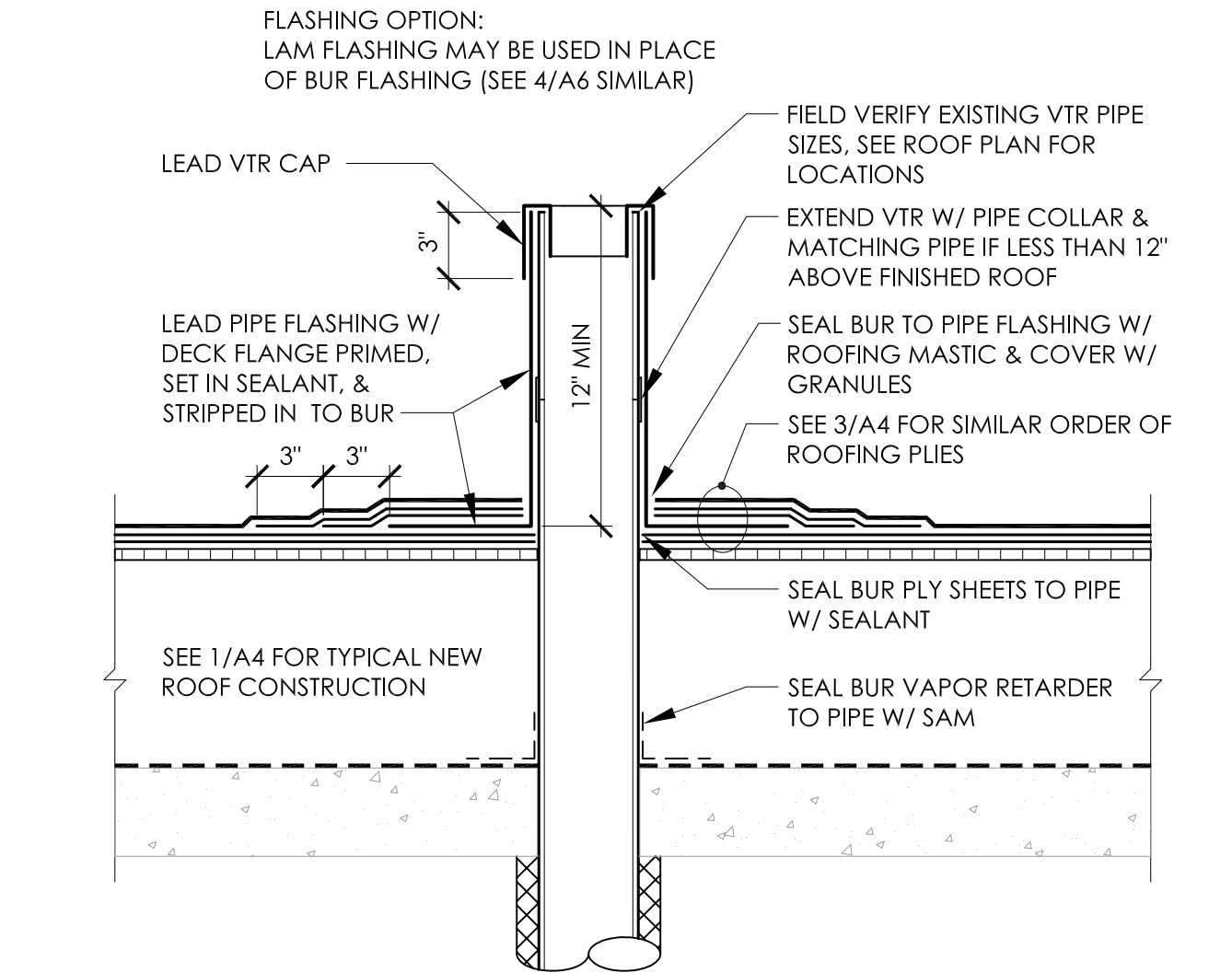


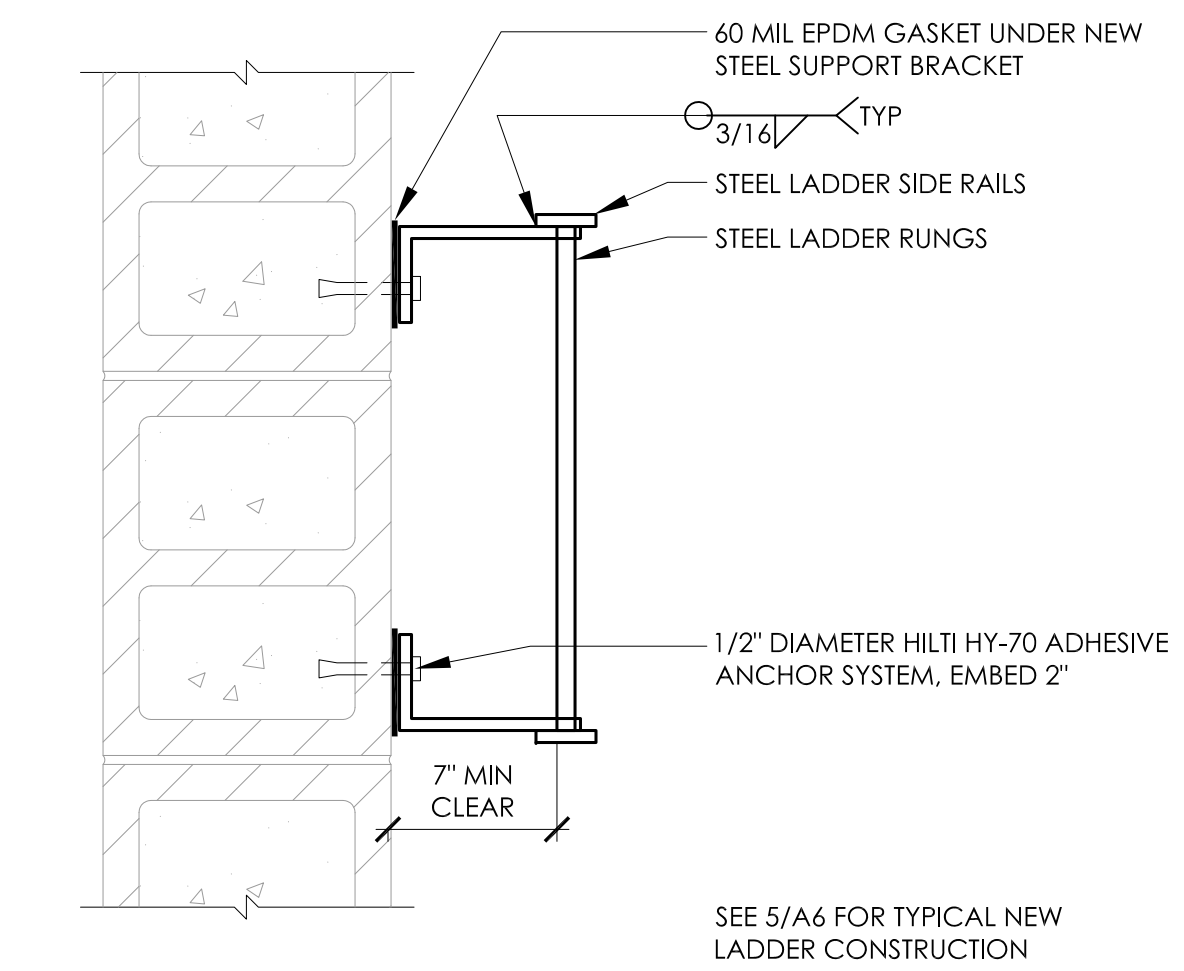
10 TYPICAL COPING LAP
A6 NTS



9 OVERFLOW SCUPPER
A6 1 1/2" = 1'-0" ROOF 1

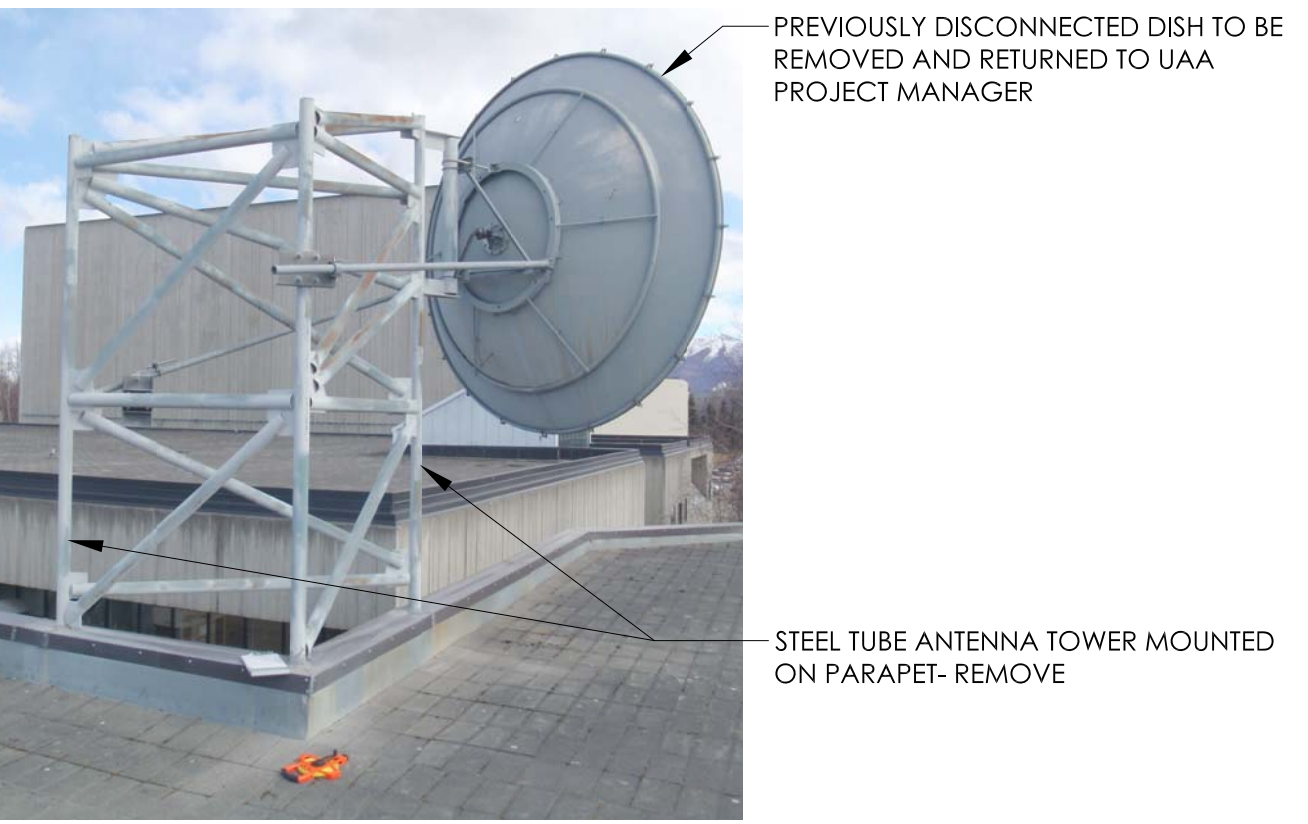


8 MECHANICAL CURB- TYP
A6 1 1/2" = 1'-0"

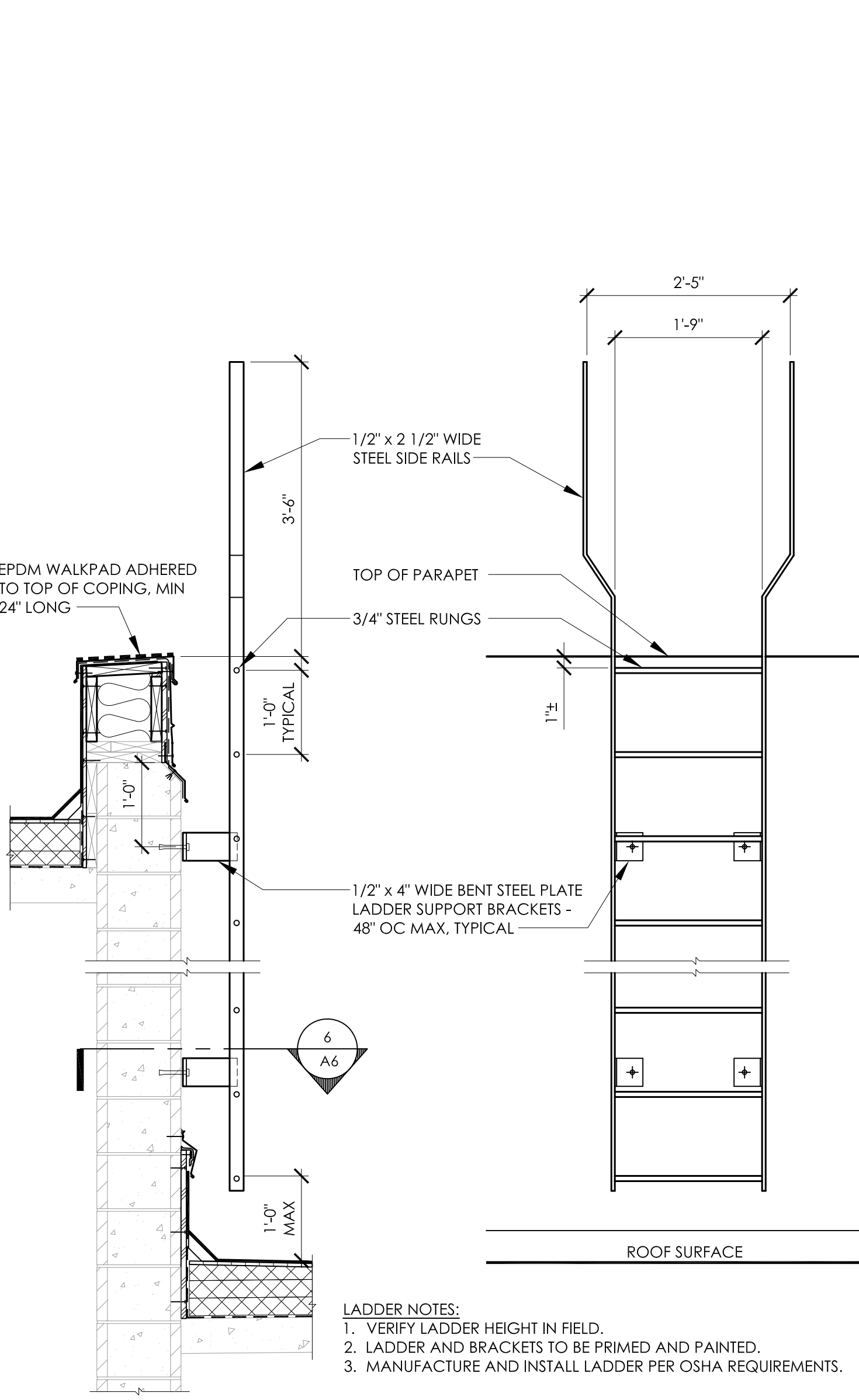


7 VTR- TYPICAL
A6 1 1/2" = 1'-0"

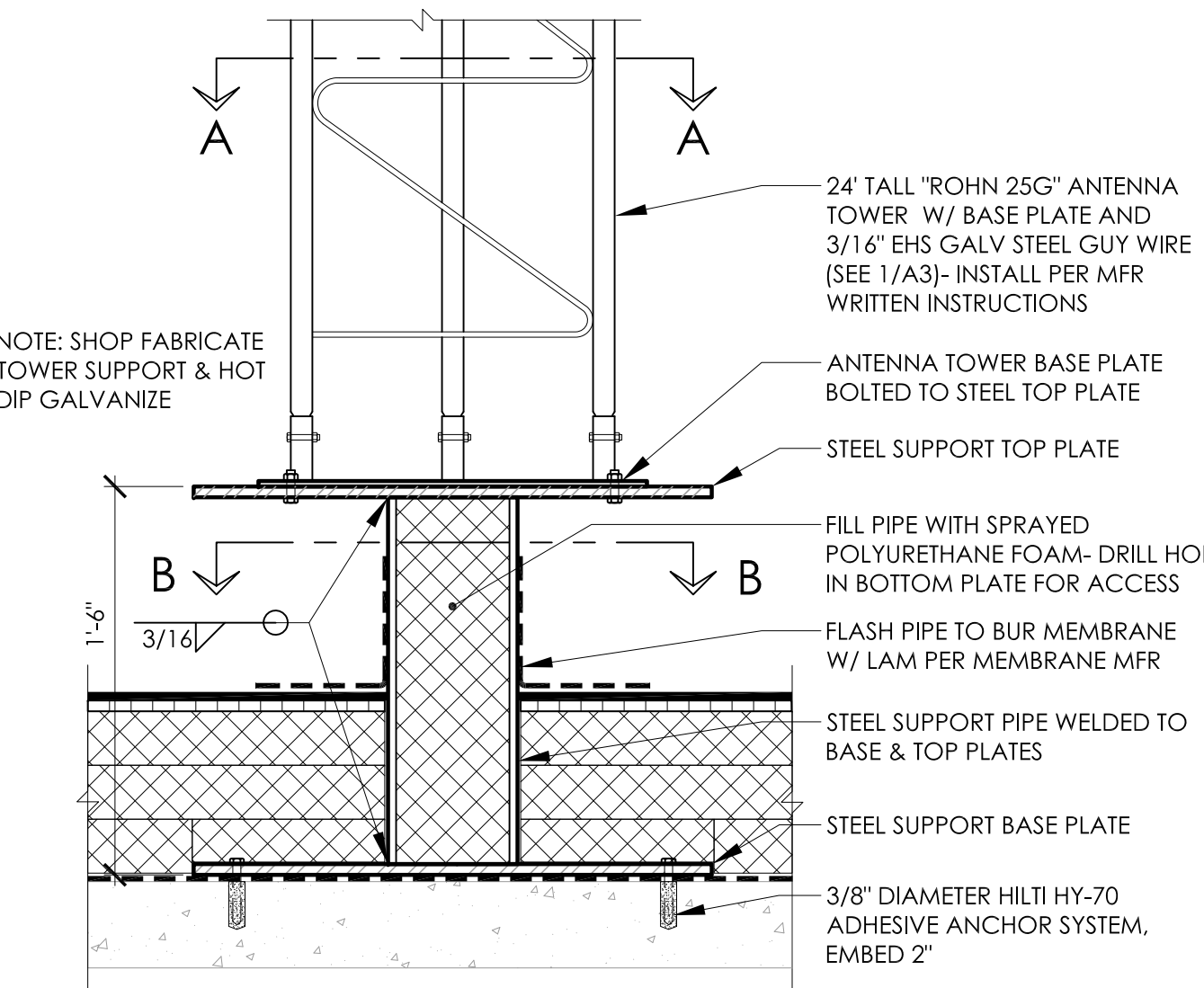
6 LADDER PLAN DETAIL
A6 1 1/2" = 1'-0"



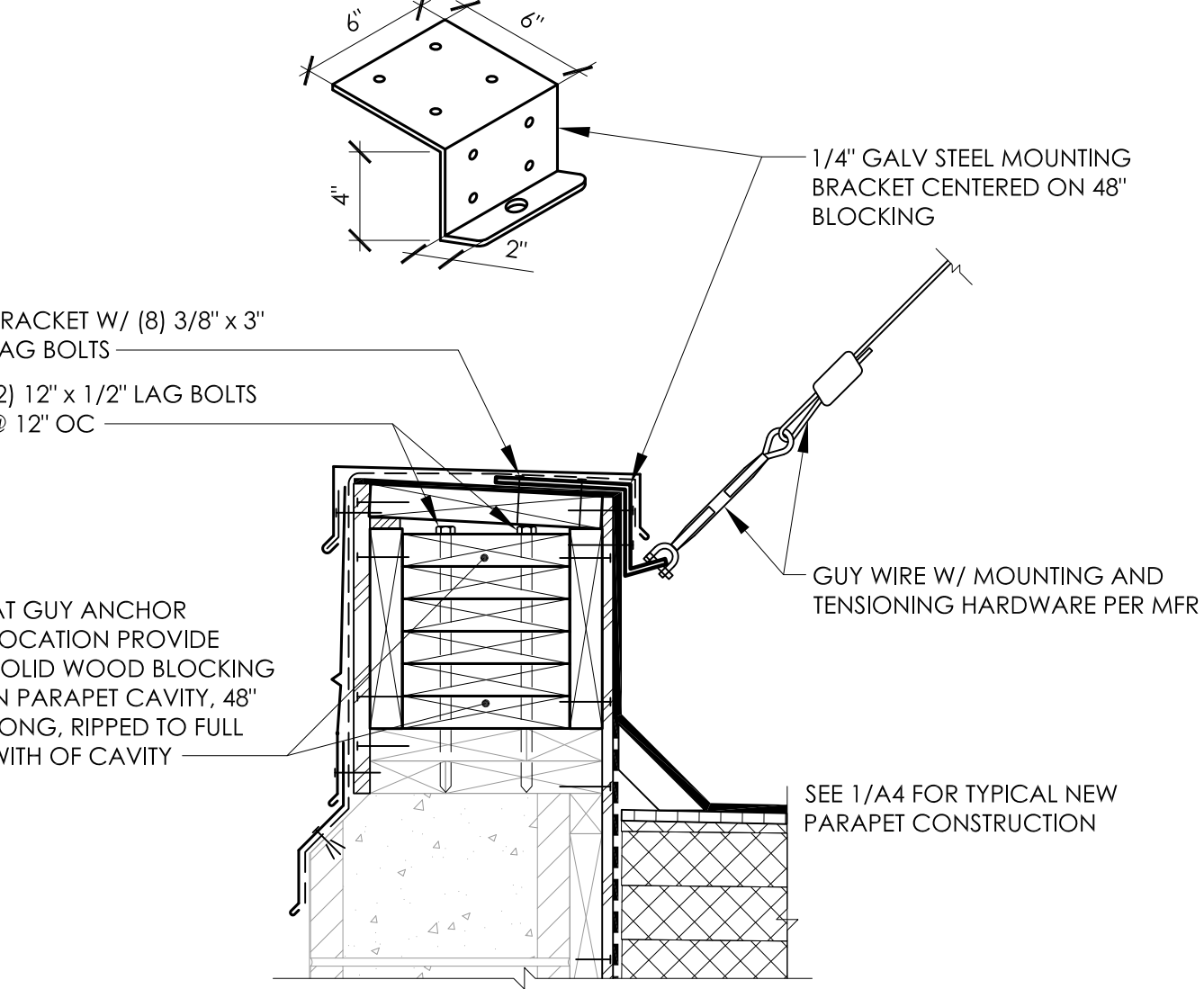
2 ANTENNA TOWER DEMO
A6 NTS ROOF 1



5 NEW LADDER
A6 3/4" = 1'-0"



4 ANTENNA TOWER SUPPORT
A6 1 1/2" = 1'-0" ROOF 1



3 ANTENNA GUY ANCHOR
A6 1 1/2" = 1'-0" ROOF 1



1 ANTENNA TOWER DEMO
A6 NTS ROOF 1

STATE OF ALASKA
149TH
Victor V. Valenole
No. 10458
October 10, 2016
REGISTERED PROFESSIONAL ARCHITECT

BDS INC. ENTITY # 25796D

BDS
ARCHITECTS
Architecture | Planning | Roof Technology

3330 C St, Suite 200
Anchorage, Ak 99503
T: 907.562.6076 | F: 907.562.6635
W: www.bdsak.com

ANCHORAGE, ALASKA
UAA PROFESSIONAL STUDIES BUILDING REROOF

UAA PROJECT NO.: 14-0040
BDS PROJECT NO.: 613002.013

PHASE
BID DOCUMENTS
DATE
OCTOBER 14, 2016
DRAWING TITLE
ROOF DETAILS

A6