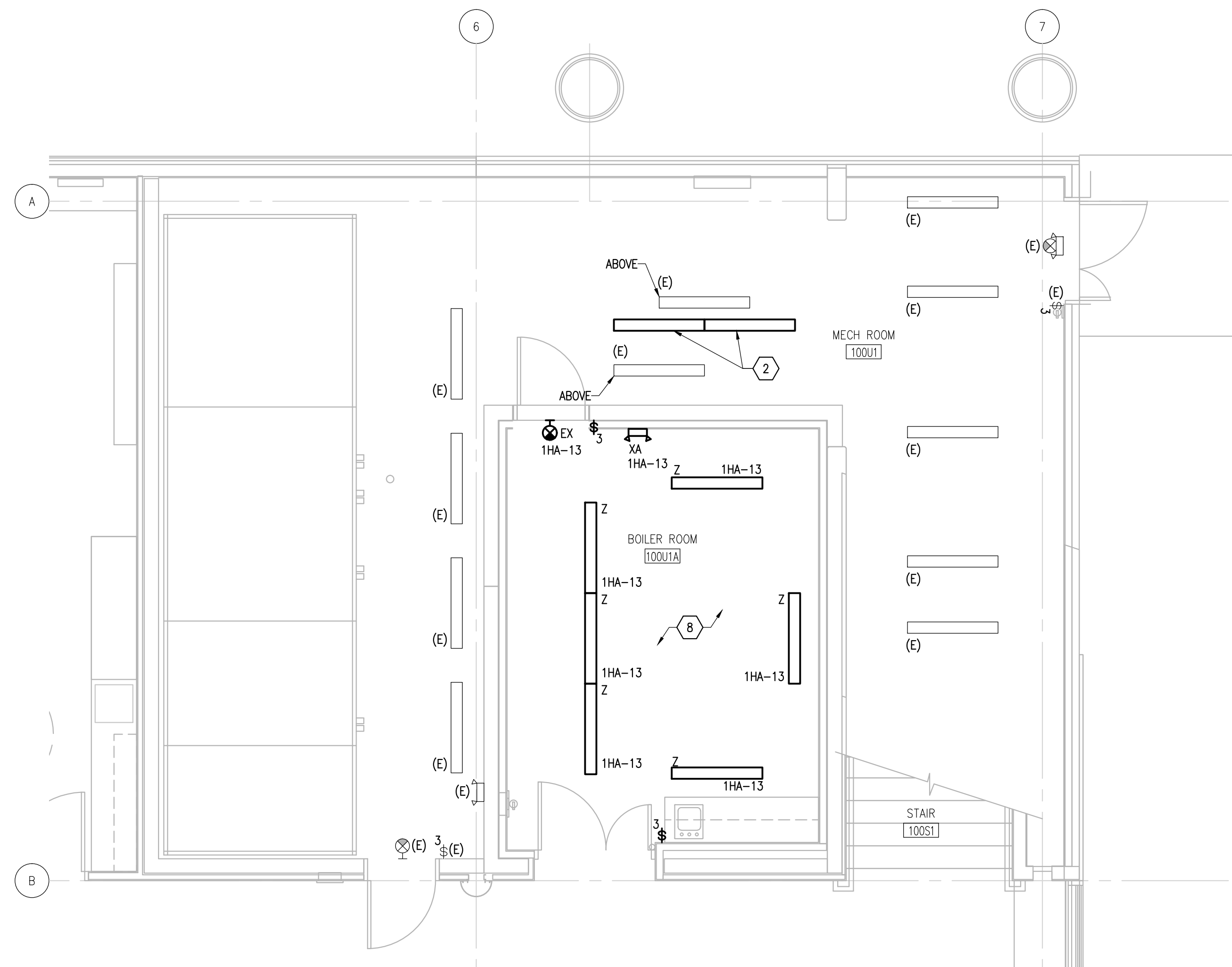
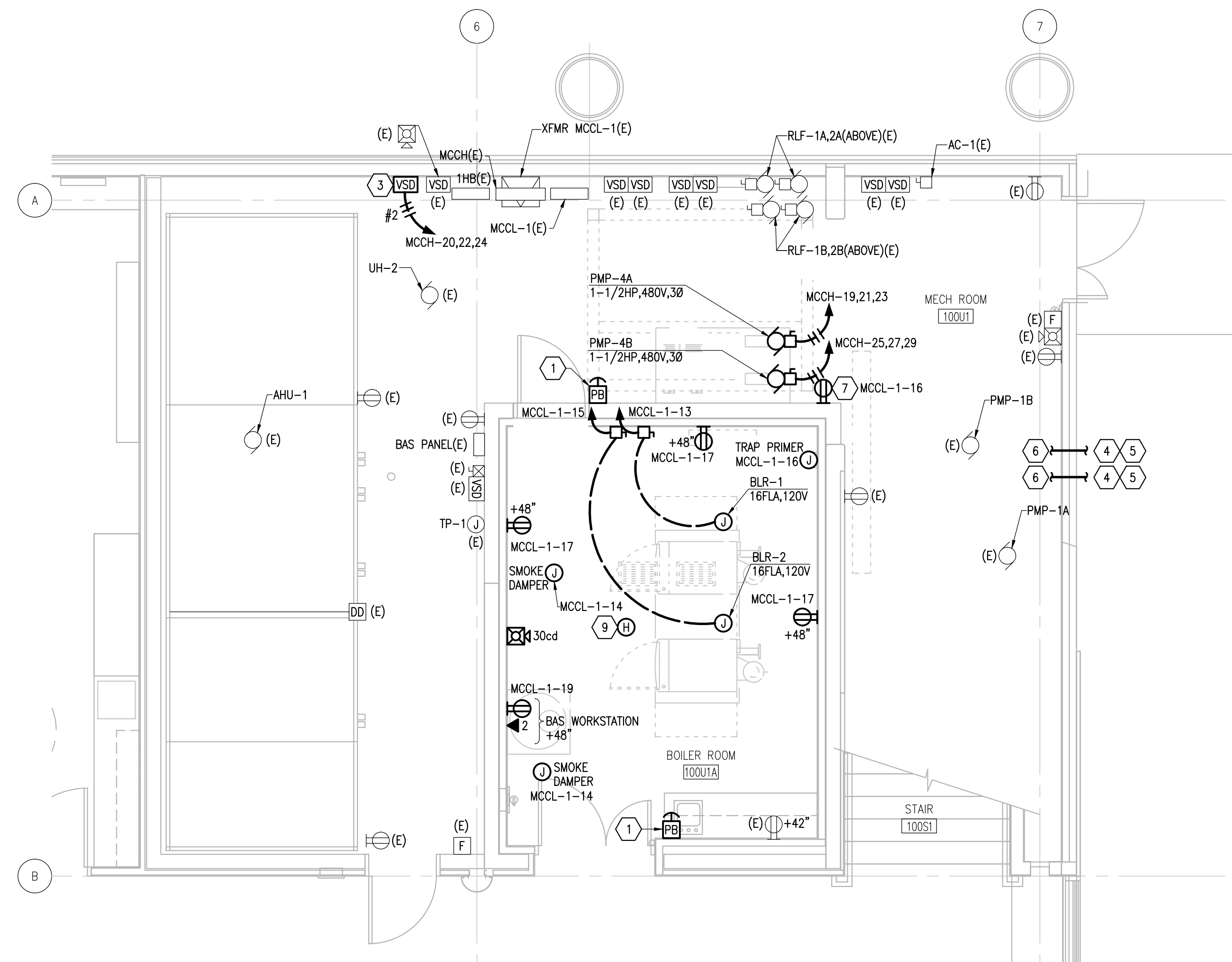
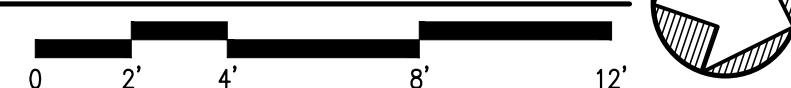


ASBESTOS CONTAINING MATERIAL (ACM) IS PRESENT IN THE BUILDING THAT MAY IMPACT THE WORK OF ALL TRADES. THE CONTRACTOR SHALL REQUIRE THEIR PERSONNEL AND ALL SUBCONTRACTOR PERSONNEL TO COORDINATE WITH OTHER TRADES AND CONDUCT THEIR WORK TO PREVENT WORKER EXPOSURE OR SITE CONTAMINATION. REFER TO DIVISION 01 AND 02 SPECIFICATIONS FOR SPECIFIC INFORMATION CONCERNING REMOVING AND DISPOSING OF THESE MATERIALS AND THE INSTALLATION OF NEW MATERIALS AND COMPONENTS. THIS NOTIFICATION IS PROVIDED IN ACCORDANCE WITH EPA AND OSHA REQUIREMENTS.

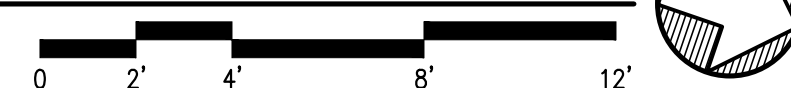


1 ENLARGED PLAN - LIGHTING
E3.1 SCALE: 1/4" = 1'-0"

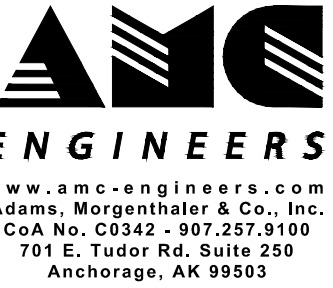


2 ENLARGED PLAN – POWER & SPECIAL SYSTEMS

E3.1 SCALE: 1/4" = 1'-0"



- 1 PROVIDE 2 POSITION PUSH-PULL, LED ILLUMINATED, RED KNOB WITH "PUSH EMERGENCY STOP" PRINTED ON KNOB, MUSHROOM TYPE BUTTON. SQUARE D MODEL #9001KR9P1LR00SH2, FOR REMOTE SHUTDOWN OF AUTOMATICALLY FIRED BOILERS IN ACCORDANCE WITH ASME CSD-1-2010. PROVIDE FLIP POLYCARBONATE COVER SUCH THAT LIFTING UP ON THE COVER WILL GAIN ACCESS TO EMERGENCY SHUT DOWN BUTTON. PROVIDE LABEL TO READ: "BOILER SHUTDOWN SWITCH". COORDINATE CONTROL SEQUENCE WITH DIVISION 23.
- 2 RELOCATE LIGHT FIXTURE RESERVED FROM DEMOLITION PHASE. FIELD COORDINATE WITH MECHANICAL EQUIPMENT AND PIPING.
- 3 LOCATION OF VSD FOR EXTERIOR WELL PUMP.
- 4 APPROXIMATE LOCATION OF VSD CONDUIT PENETRATION. SEAL ANNULAR SPACE AROUND CONDUIT PENETRATION THROUGH EXTERIOR WALL IN ACCORDANCE WITH SPECIFICATION SECTION 260529.
- 5 PROVIDE RIGID CONDUIT ELBOW TO TRANSITION FROM PVC CONDUIT BELOW GRADE TO RMC EXPOSED ON EXTERIOR WALL. PROVIDE LB CONDULET FOR THROUGH WALL PENETRATION.
- 6 ROUTE RMC CONDUIT EXPOSED TO WELL PUMP VSD. PROVIDE LMFC FOR FINAL CONNECTION TO VSD.
- 7 PROVIDE RECEPTACLE FOR FUTURE PH MEASURING EQUIPMENT. COORDINATE WITH TEMPERATURE CONTROLS. CIRCUIT AS NOTED.
- 8 FIELD COORDINATE LIGHTING FIXTURE LOCATIONS WITH MECHANICAL EQUIPMENT.
- 9 PROVIDE HEAT DETECTOR AND CONNECT TO EXISTING FIRE ALARM SIGNALING LINE CIRCUIT. REPROGRAM AND RETEST IN ACCORDANCE WITH NFPA 72.



UAA
UNIVERSITY
of ALASKA
ANCHORAGE

NSB EM-2 MECHANICAL SYSTEMS CONVERSION/UPGRADE

revisions

No.	Date	Description

Design: JEH

rawn: MPL

AA Project No.: 16-0103

Date: 02/17/2017

Sheet Title

ENLARGED PLANS

Sheet Number

E3.1

FILE NAME: X:\16601 NSBBOIL\Dwgs\Edwg\Sheet Files\16601 - E3.1.dwg
PLOTTED: MPL 03/08/2017 11:02:30 AM